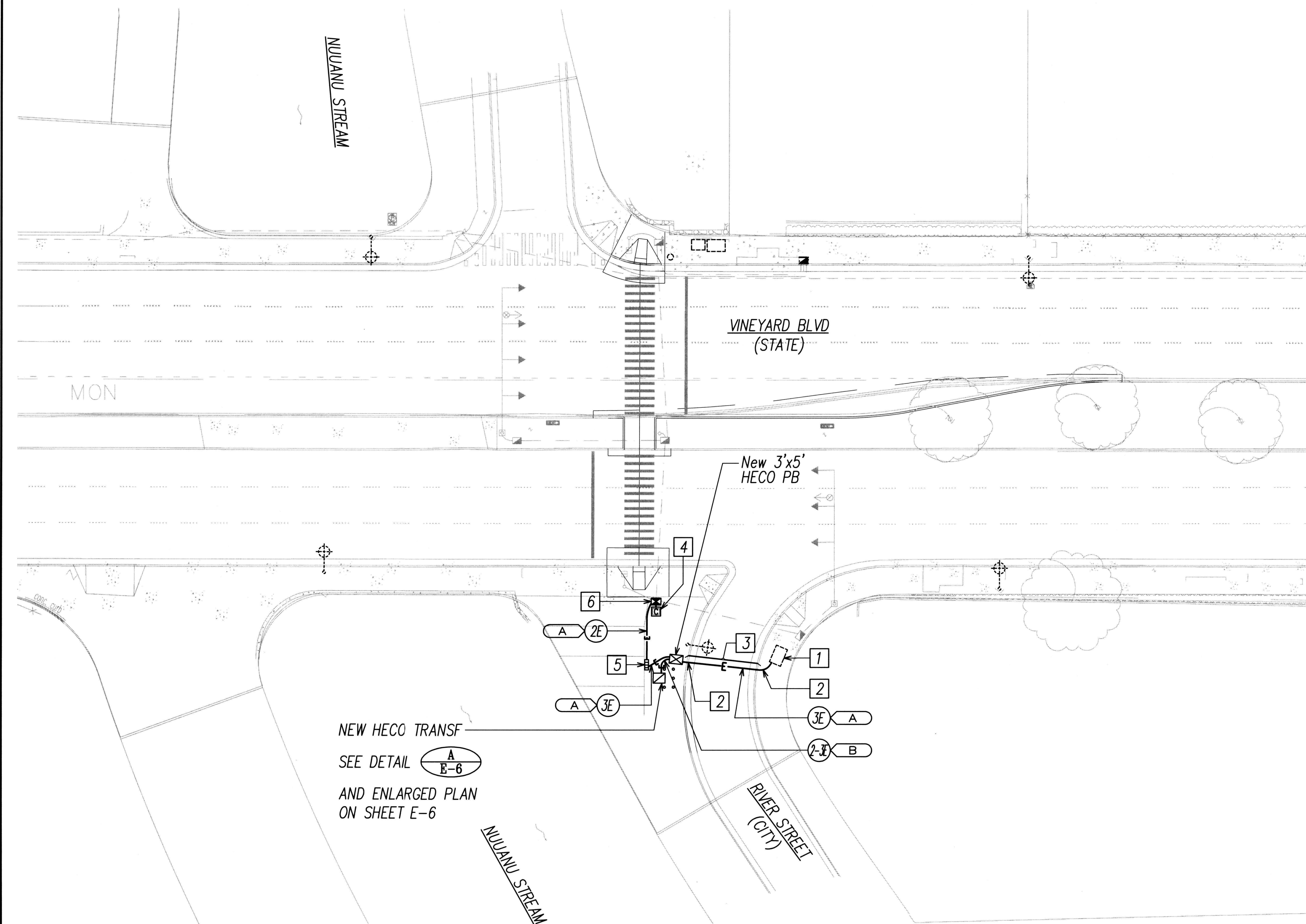



FED. ROAD DIST. NO.	STATE	FED. AID PROJ. NO.	FISCAL YEAR	SHEET NO.	TOTAL SHEETS
HAWAII	HAW.	98A-01-15	2017	38	40



WORK ITEMS:

- 1 EXISTING HECO PULLBOX. CAREFULLY BREAK AND PATCH FOR THE ENTRY OF NEW CONDUIT.
- 2 SAWCUT AND PATCH EXISTING SIDEWALK AND CONCRETE CURB. RESTORE TO ORIGINAL CONDITION OR BETTER.
- 3 SAWCUT AND PATCH EXISTING AC PAVEMENT, AND INSTALL NEW ELECTRICAL DUCT. COORDINATE WORK WITH INSTALLATION OF TRAFFIC SIGNAL SYSTEMS.
- 4 NEW TRAFFIC SIGNAL CABINET. COORDINATE CONNECTION OF POWER WITH DTS.
- 5 NEW METER STAND AND ELECTRICAL DISTRIBUTION EQUIPMENT, INSTALLED IN GRASSED AREA. METER TO BE INSTALLED FACING TOWARD RIVER STREET.
SEE DETAIL  .
- 6 NEW TRAFFIC SIGNAL PULLBOX, ROUTE POWER WIRING THROUGH PULLBOX AND INTO TRAFFIC SIGNAL CABINET.

APPROVALS:

Hawaiian Electric Company

Date



LICENSE EXPIRES 4/30/18

THIS WORK WAS PREPARED BY
ME OR UNDER MY SUPERVISION

[Signature]

**STATE OF HAWAII
DEPARTMENT OF TRANSPORTATION
HIGHWAYS DIVISION**

ELECTRICAL SITE PLAN

VINEYARD BOULEVARD TRAFFIC SIGNALS AT RIVER STREET PROJECT NO. 98A-01-15

Scale: AS NOTED Date: Aug. 2017

SHEET No. E-4 OF 6 SHEETS

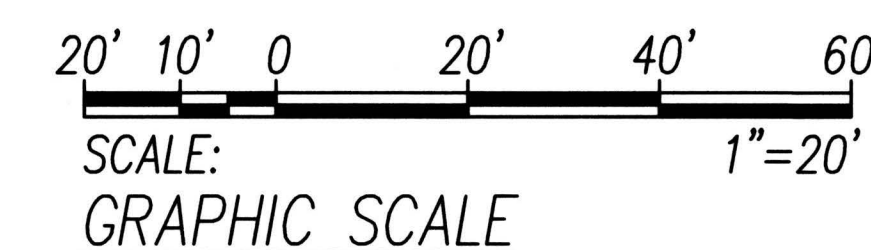
ORIGINAL PLAN	SURVEY PLOTTED BY _____	DATE _____
	DRAWN BY _____	" _____
	TRACED BY _____	" _____
NOTE BOOK	DESIGNED BY _____	" _____
	QUANTITIES BY _____	" _____
	CHECKED BY _____	" _____
No. _____		

AST SAVE: 01/18/17 11:24:37 BY: SSS PLOT SC 1=20.000000
C:\Vacc\PROJECTS\216162\E004_216162_ElecPlan XREFS: SIGNAL BLOCK EXST=C:\USERS\Y\Y\I\DESKTOP\TOPO R9-2012 2D TOPO R9-2012 2D TOPO 2VBLD 1WN-T-STRP 1WN-T-SIGNAL 1WN-T-GEOM_XR216162_BLACKBGND ALL_XR216162_ELEC ALL

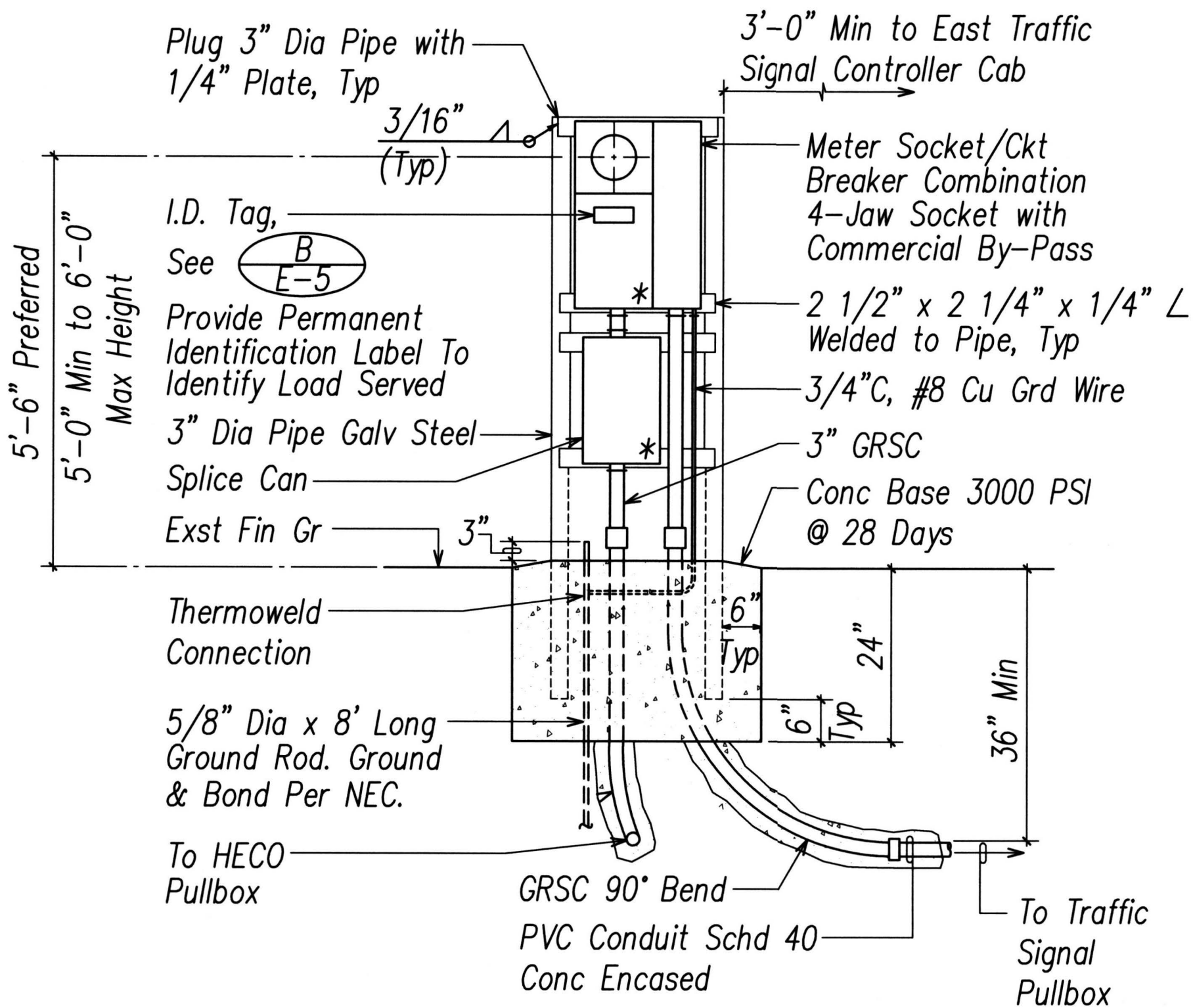


ELECTRICAL SITE PLAN

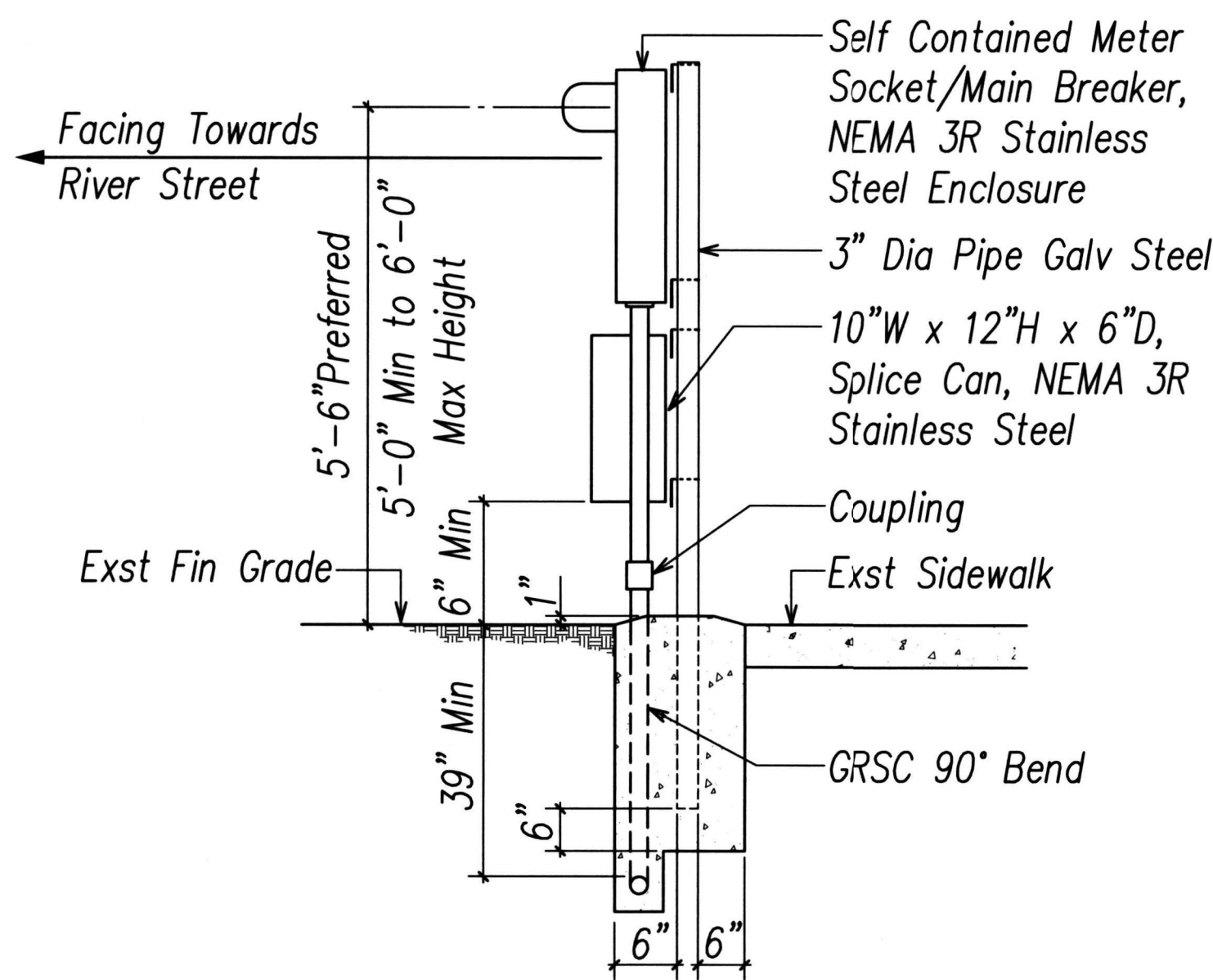
SCALE: 1"=20'-0"



FED. ROAD DIST. NO.	STATE	FED. AID PROJ. NO.	FISCAL YEAR	SHEET NO.	TOTAL SHEETS
HAWAII	HAW.	98A-01-15	2017	39	40

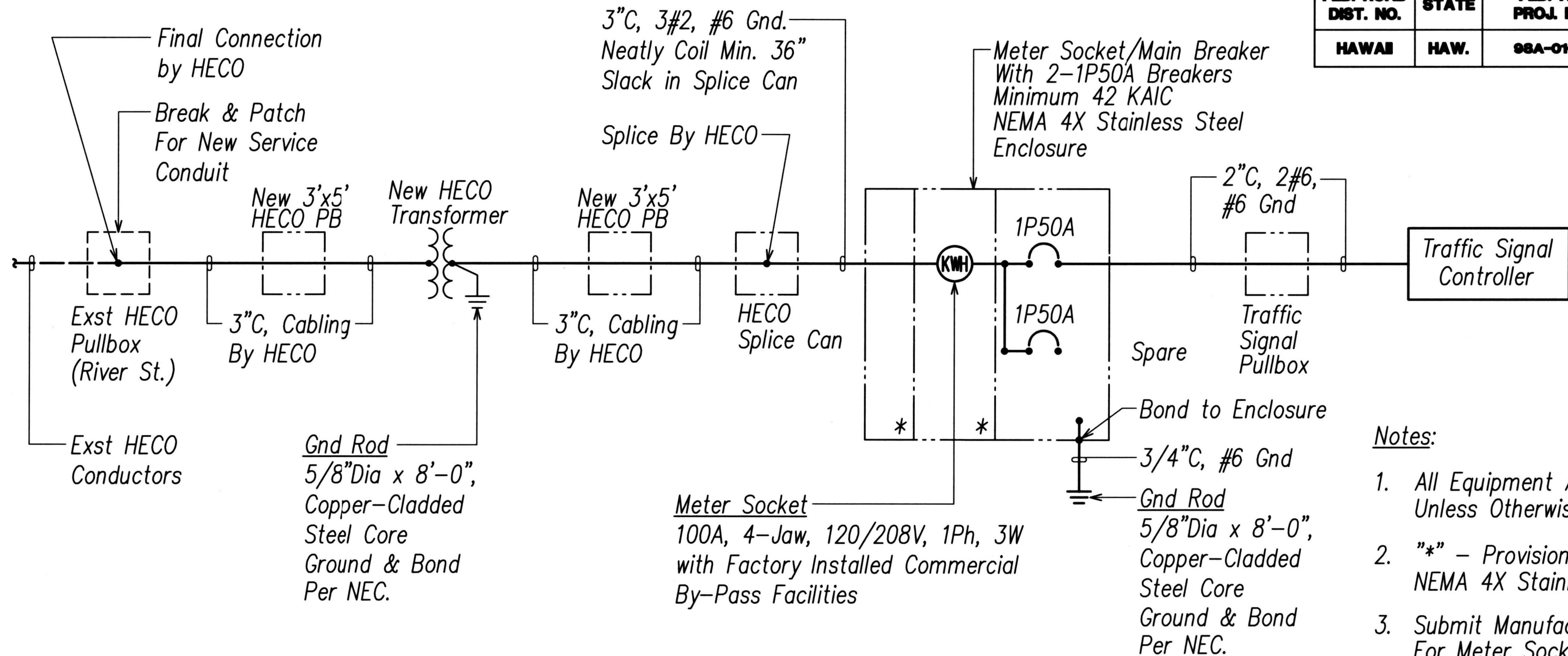


FRONT ELEVATION



SIDE ELEVATION

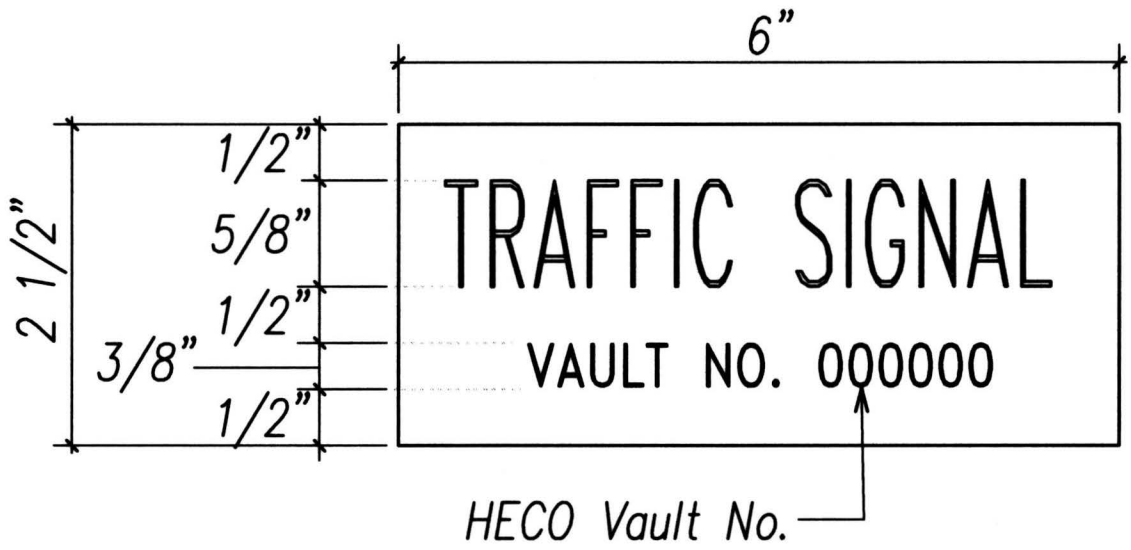
METER SOCKET DETAIL (PEDESTAL)
NOT TO SCALE



SINGLE-LINE DIAGRAM
(NEW TRAFFIC SIGNAL SERVICE AT RIVER STREET)

- Notes:
1. All Equipment And Wiring Are New Unless Otherwise Noted.
 2. "*" - Provision for HECO Seal. NEMA 4X Stainless Steel Enclosure.
 3. Submit Manufacturer's Shop Drawings For Meter Socket/Main Breaker For Review and Approval Before Fabrication. Apparatus Shall be Designed in Accordance with "EUSERC" Drawings And Requirements.

- Notes:
1. Contractor shall Make All Electrical Connection to Traffic Counting Station Cabinet, Provide 2-1P50A Breaker, Ground and 2" Conduit.
 2. All Conduits to Contain a Polyolefin Pull Line. (Jet Line Cat #232 or Equiv)
 3. Pedestal shall be Hot-Dipped Galvanized After Fabrication.
 4. All Fastening Bolts, Nuts & Washers shall be Stainless Steel. Provide One Coat Shop Primer & Two Coats of Acrylic Enamel Finish, Color to Match Traffic Signal Controller Cabinet.
 5. Provide A Minimum Of 4 Feet Clear And Level Workspace Clearance In Front of Metering And Service Equipment.
 6. * - Provision for HECO Seal. NEMA 3R Stainless Steel Enclosure.
 7. At Time Of Installation, Provide And Install Meter Socket Covers (Plastic) And Bands For All Blank Meter Sockets. Identify Covers So They Can Be Returned.
 8. Provide Barrier Posts for Protection of Meter and Service Equipment Should Equipment have Vehicular Contact Exposure.



- Notes:
1. Use 3-Ply Laminated Flexible Plastic, Black-White-Black Thickness: Black Cap Sheet-0.010", White Base Sheet-0.052", Black Base Sheet-0.010".
 2. Attach to Meter Socket Using Scotch 3M Brand Very High Bond (VHB) Double Coated Acrylic Foam Tape or Equivalent.
 3. Letters/Numbers shall be 1/16" Stroke, (White in Color).
 4. Letters/Numbers Area Inscribed by Cutting through "Black Cap Sheet" to Expose White Letters/Numbers.

METER SOCKET I.D. TAG DETAIL
NOT TO SCALE



LICENSE EXPIRES 4/30/18

THIS WORK WAS PREPARED BY ME OR UNDER MY SUPERVISION

Steven H. Sakai

APPROVALS:

Hawaiian Electric Company

Date

STATE OF HAWAII
DEPARTMENT OF TRANSPORTATION
HIGHWAYS DIVISION

SINGLE LINE DIAGRAM AND MISCELLANEOUS DETAILS

VINEYARD BOULEVARD
TRAFFIC SIGNALS AT RIVER STREET
PROJECT NO. 98A-01-15

Scale: AS NOTED Date: Aug. 2017

SHEET No. E-5 OF 6 SHEETS