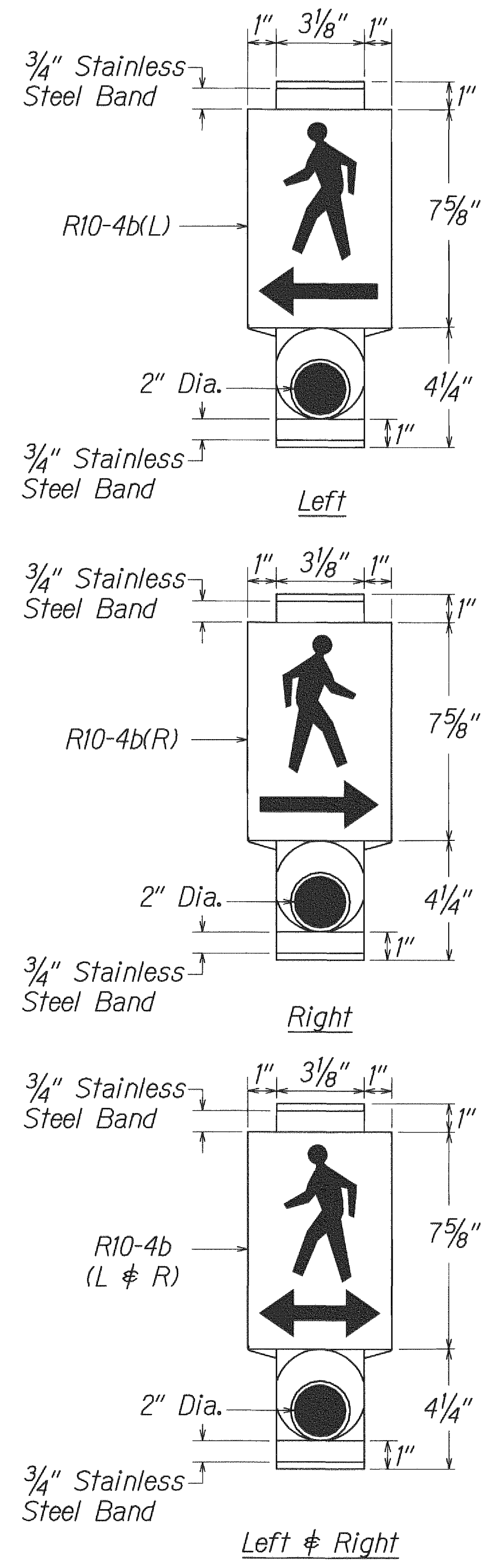


FED. ROAD DIST. NO.	STATE	FED. AID PROJ. NO.	FISCAL YEAR	SHEET NO.	TOTAL SHEETS
HAWAII	HAW.	STP-098-1(011)	2012	33	64

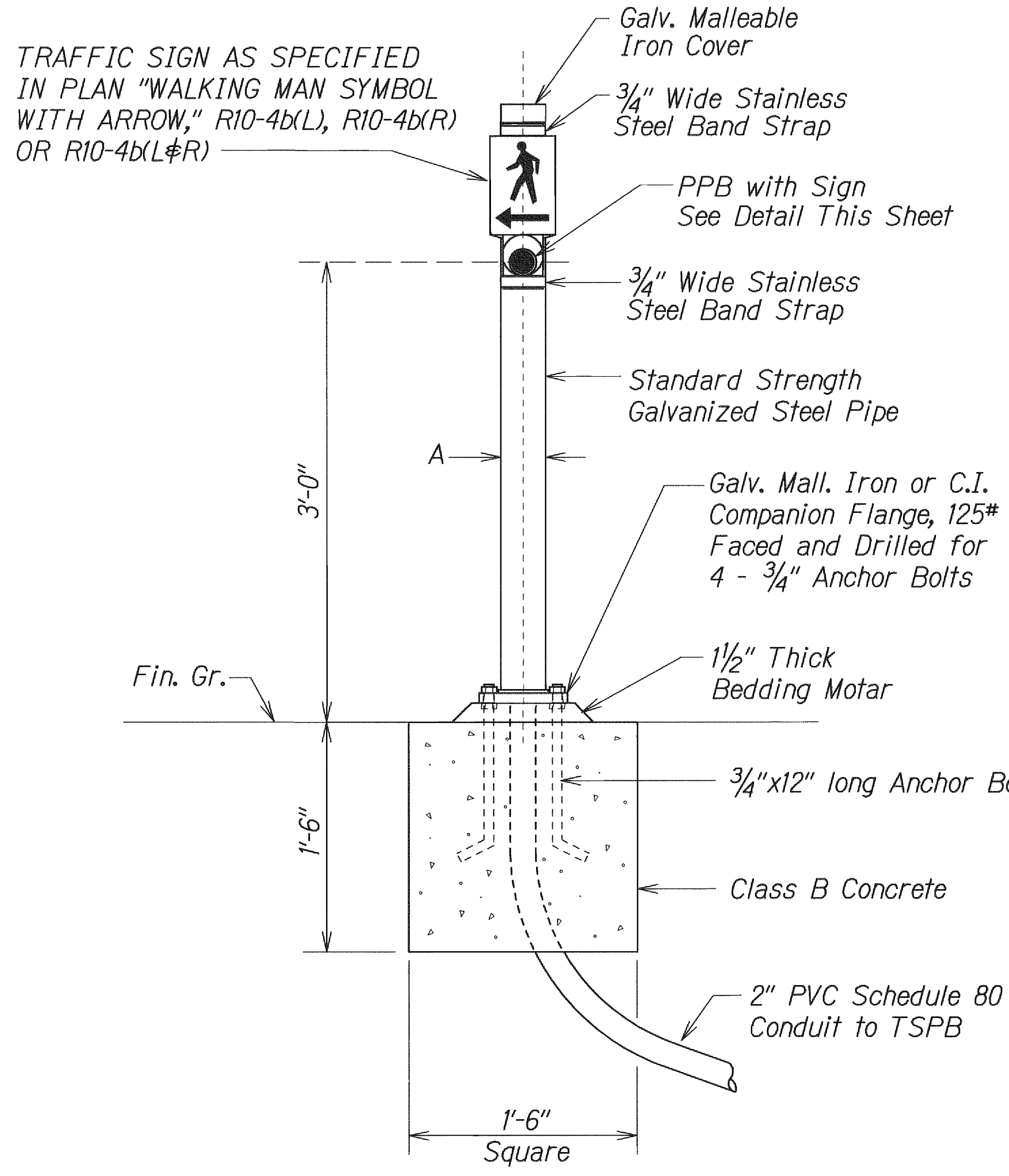


### PEDESTRIAN PUSH BUTTON WITH SIGN

Man, Arrow & Push Button - White  
Background - Black

#### NOTES:

1. There shall be a 30" x 48" level ground surface (2% max. cross slope, both directions) for a forward or side approach, as appropriate, to a pedestrian push button. Location of pedestrian push button shall be shown on Civil Plans in addition to Electrical Plans.
2. The removal of existing Pedestrian Push Button (PPB), installation of new PPB, and all work related to PPB shall be considered incidental to Item No. 623.0103 - Pedestrian Push Button Pedestal With Foundation and Instruction Sign.

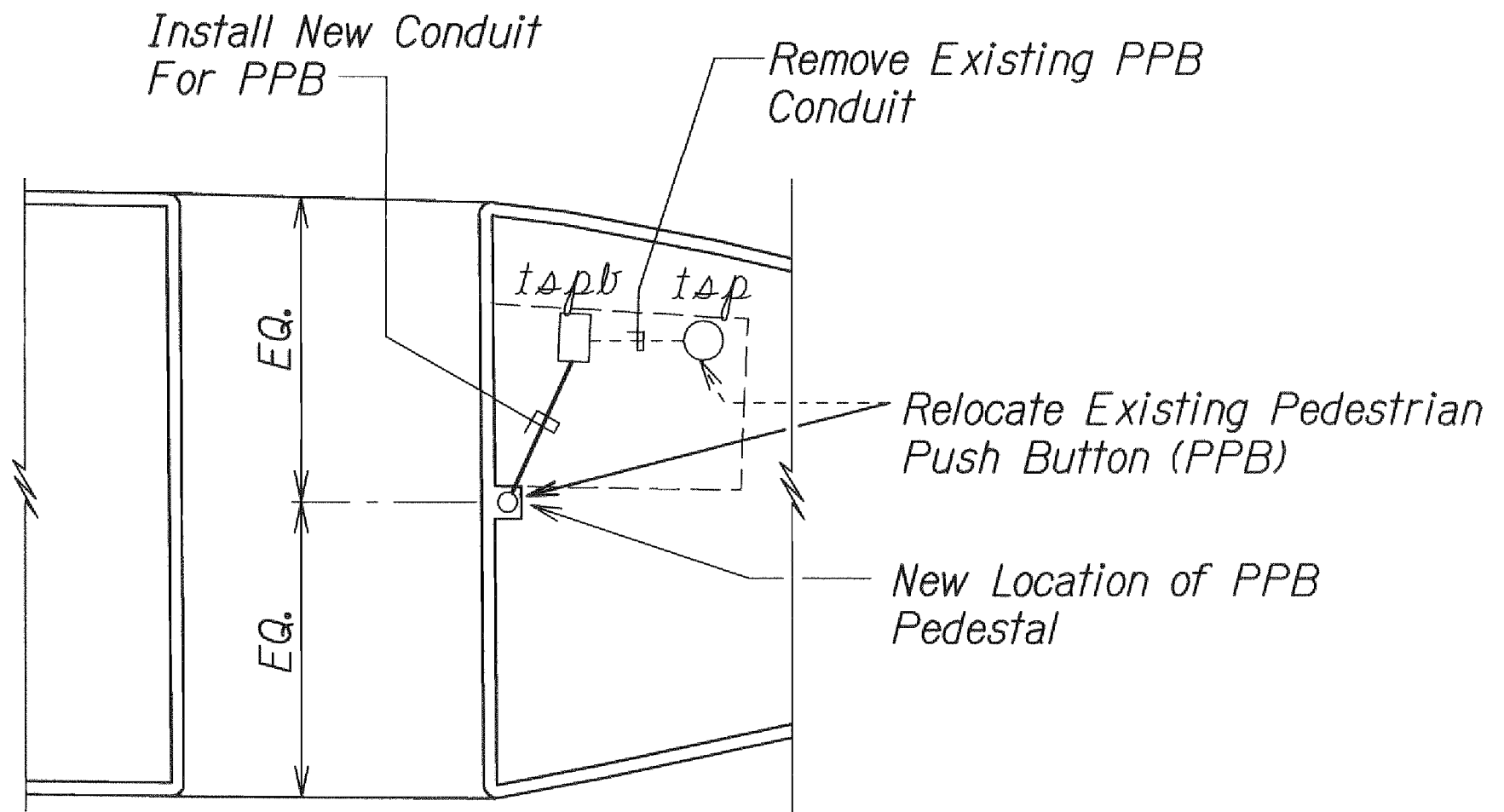
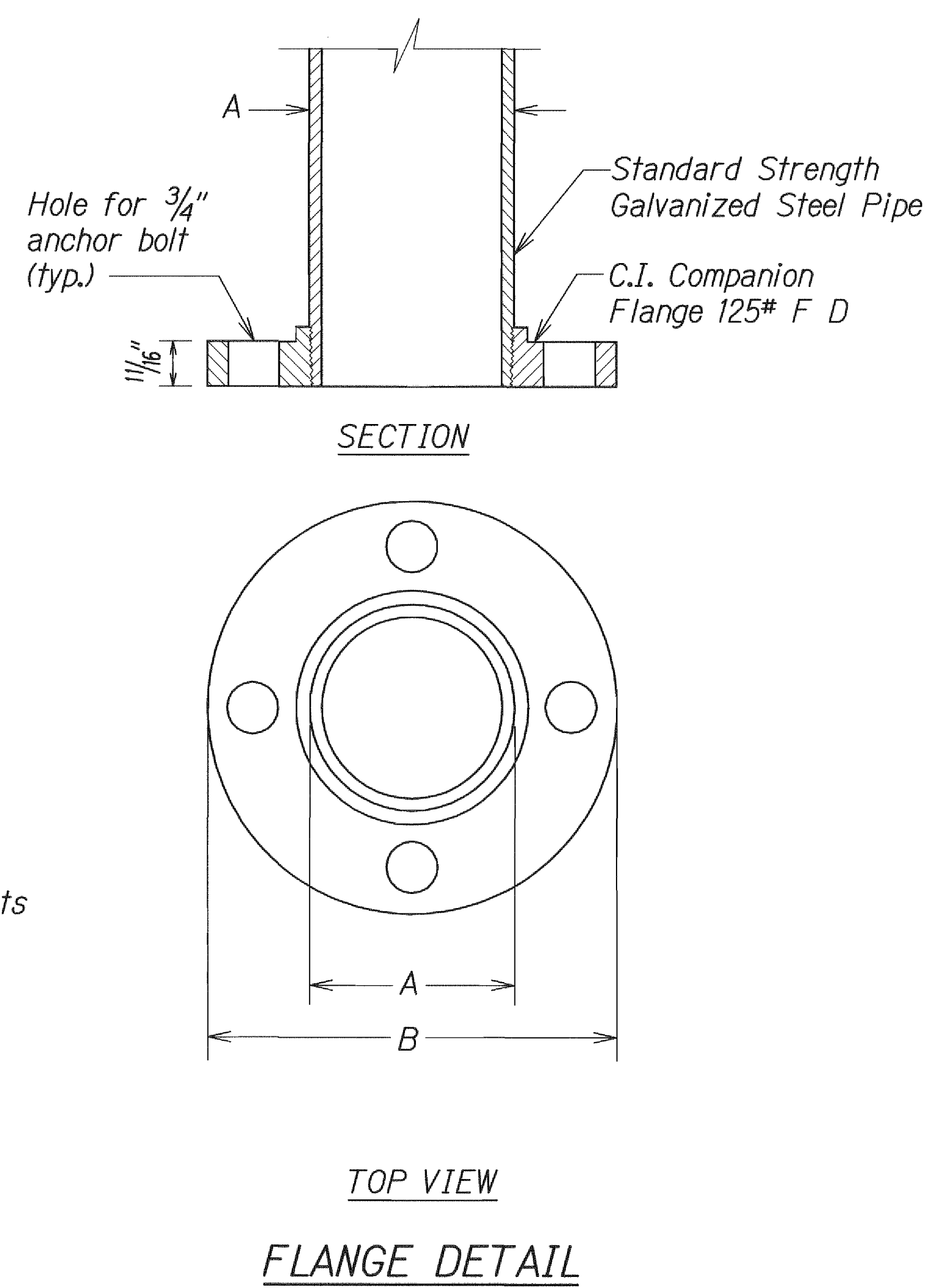


### PPB POST AND FOOTING DETAIL

#### NOTE:

1. Conduits shall protrude 2" max. above finished surface of foundation.
2. Conduits shall slope away from post foundation.

DATA TABLE FOR PPB POST		
AMOUNT OF PPB	DIMENSIONS	
	A	B
1	3 1/2"	8"
2 → 3	4 1/2"	9"



### NEW PPB AT NEW CURB RAMP DETAIL VICINITY OF VINEYARD BLVD AND PUA LANE

STATE OF HAWAII  
DEPARTMENT OF TRANSPORTATION  
HIGHWAYS DIVISION

**PEDESTRIAN PUSH BUTTON DETAILS**  
  
VINEYARD BOULEVARD RESURFACING  
Vicinity of Palama St. to End of H-1 On- and Off Ramp  
Federal-Aid Project No. STP-098-1(011)  
  
Not to Scale      Date: August, 2012  
  
SHEET No. T10 OF 20 SHEETS

SURVEY PLOTTED BY	DATE
DESIGNED BY	
TRACED BY	
NOTE BOOK	
QUANTITIES BY	
CHECKED BY	