

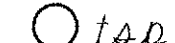
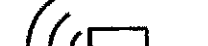

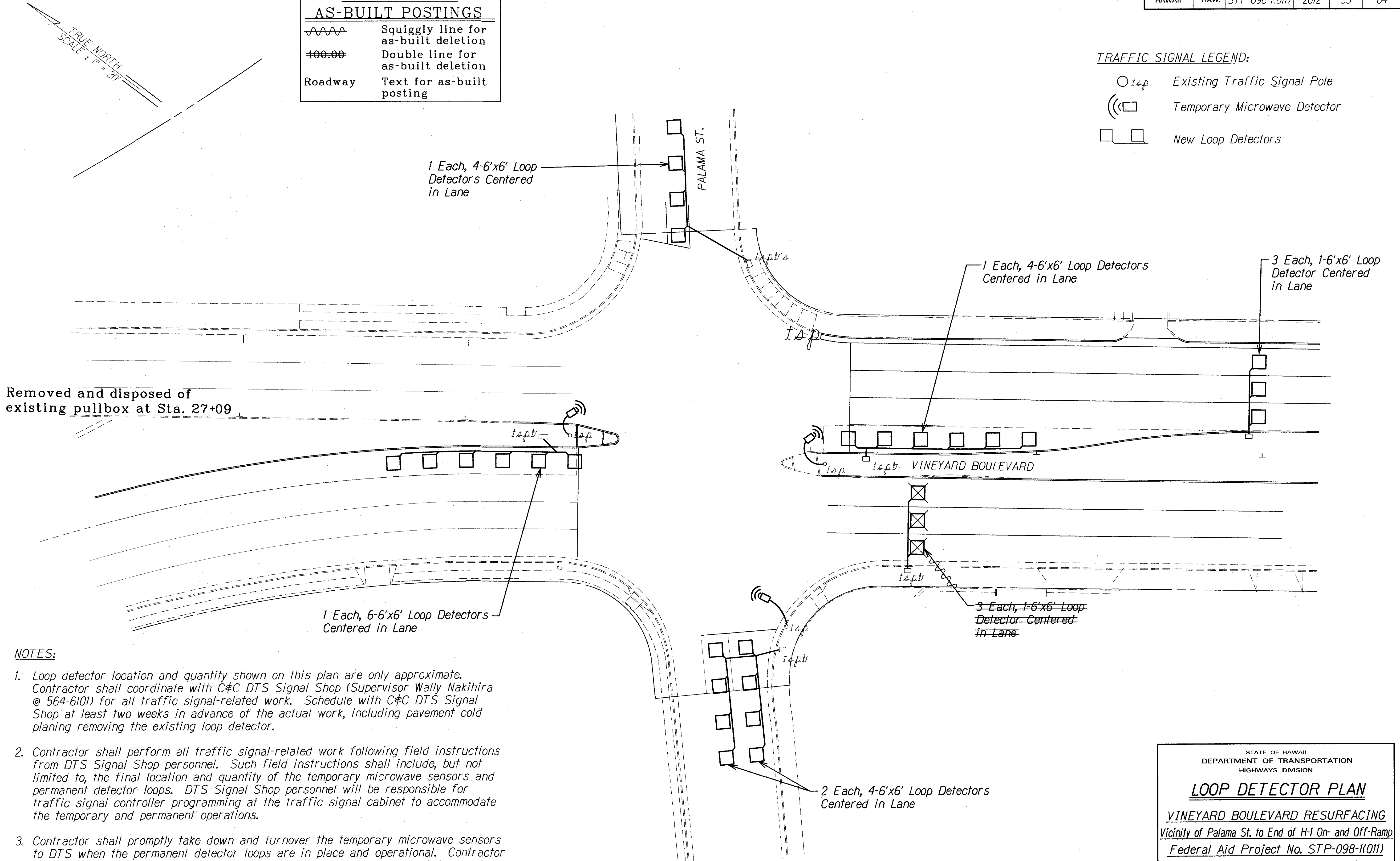


FED. ROAD DIST. NO.	STATE	FED. AID PROJ. NO.	FISCAL YEAR	SHEET NO.	TOTAL SHEETS
HAWAII	HAW.	STP-098-1(K011)	2012	35	64

LEGEND FOR AS-BUILT POSTINGS	
	Squiggly line for as-built deletion
	Double line for as-built deletion
Roadway	Text for as-built posting

TRAFFIC SIGNAL LEGEND:	
	Existing Traffic Signal Pole
	Temporary Microwave Detector
	New Loop Detectors

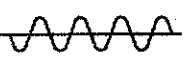
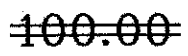


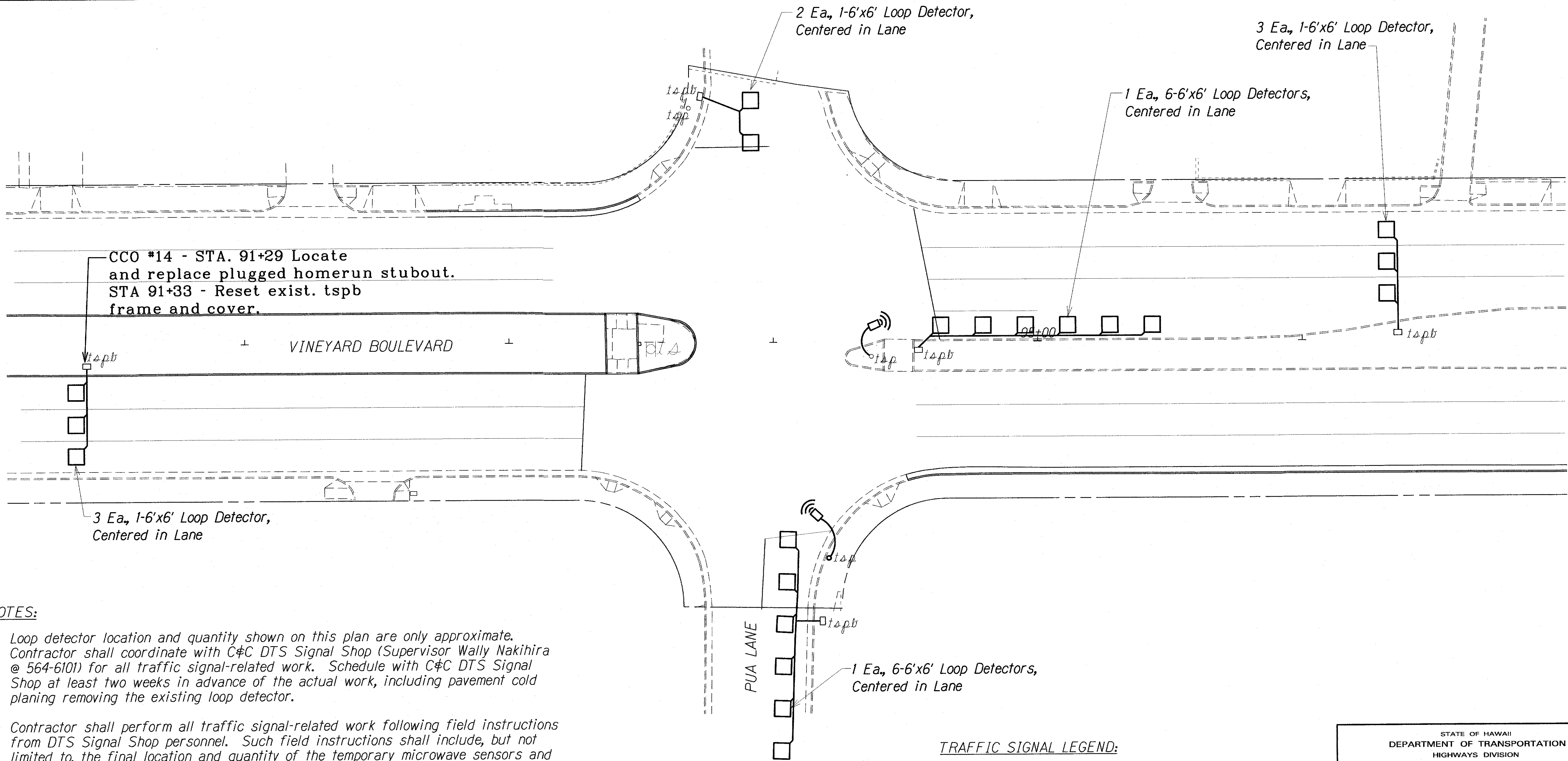
NOTES:

1. Loop detector location and quantity shown on this plan are only approximate. Contractor shall coordinate with C&C DTS Signal Shop (Supervisor Wally Nakihiro @ 564-6101) for all traffic signal-related work. Schedule with C&C DTS Signal Shop at least two weeks in advance of the actual work, including pavement cold planing removing the existing loop detector.
2. Contractor shall perform all traffic signal-related work following field instructions from DTS Signal Shop personnel. Such field instructions shall include, but not limited to, the final location and quantity of the temporary microwave sensors and permanent detector loops. DTS Signal Shop personnel will be responsible for traffic signal controller programming at the traffic signal cabinet to accommodate the temporary and permanent operations.
3. Contractor shall promptly take down and turnover the temporary microwave sensors to DTS when the permanent detector loops are in place and operational. Contractor shall perform all necessary work to restore traffic signal system back to a neat appearance of the electrical trade.

STATE OF HAWAII DEPARTMENT OF TRANSPORTATION HIGHWAYS DIVISION	
<b>LOOP DETECTOR PLAN</b>	
VINEYARD BOULEVARD RESURFACING Vicinity of Palama St. to End of H-1 On- and Off-Ramp Federal Aid Project No. STP-098-1(K011)	
Scale: 1"=20'	Date: March 2012
SHEET No. T12 OF 20 SHEETS	

FED. ROAD DIST. NO.	STATE	FED. AID PROJ. NO.	FISCAL YEAR	SHEET NO.	TOTAL SHEETS
HAWAII	HAW.	STP-098-1(011)	2012	36	64

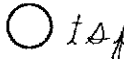

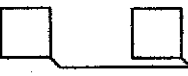
LEGEND FOR AS-BUILT POSTINGS	
	Squiggly line for as-built deletion
	Double line for as-built deletion
Roadway	Text for as-built posting



NOTES:

1. Loop detector location and quantity shown on this plan are only approximate. Contractor shall coordinate with C&C DTS Signal Shop (Supervisor Wally Nakihiro @ 564-6101) for all traffic signal-related work. Schedule with C&C DTS Signal Shop at least two weeks in advance of the actual work, including pavement cold planing removing the existing loop detector.
2. Contractor shall perform all traffic signal-related work following field instructions from DTS Signal Shop personnel. Such field instructions shall include, but not limited to, the final location and quantity of the temporary microwave sensors and permanent detector loops. DTS Signal Shop personnel will be responsible for traffic signal controller programming at the traffic signal cabinet to accommodate the temporary and permanent operations.
3. Contractor shall promptly take down and turnover the temporary microwave sensors to DTS when the permanent detector loops are in place and operational. Contractor shall perform all necessary work to restore traffic signal system back to a neat appearance of the electrical trade.

TRAFFIC SIGNAL LEGEND:

-  Existing Traffic Signal Pole
-  Temporary Microwave Detector
-  New Loop Detectors

STATE OF HAWAII  
DEPARTMENT OF TRANSPORTATION  
HIGHWAYS DIVISION

### LOOP DETECTOR PLAN

VINEYARD BOULEVARD RESURFACING  
Vicinity of Palama St. to End of H-1 On- and Off-Ramp  
Federal Aid Project No. STP-098-1(011)

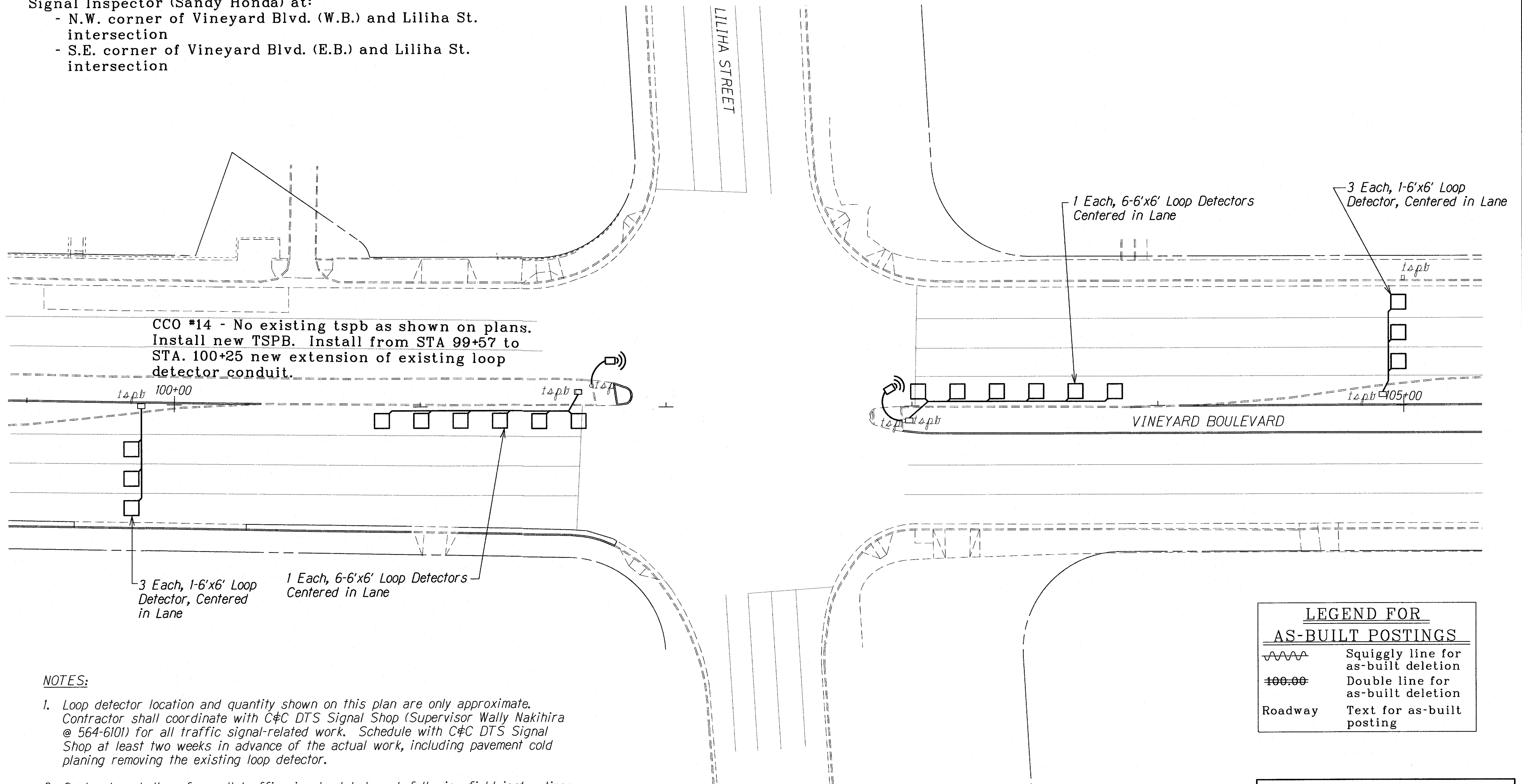
Scale: 1"=20'      Date: March 2012

SHEET No. 713 OF 20 SHEETS

DESIGNED BY	DATE
DRAWN BY	
CHECKED BY	
IN CHARGE	
NOTED BY	
QUANTITIES BY	
DATE	

This Change Order #11 authorizes the following:  
Replace the brittle wiring in the traffic signal  
mast arms as directed by the City & County Traffic  
Signal Inspector (Sandy Honda) at:  
- N.W. corner of Vineyard Blvd. (W.B.) and Liliha St.  
intersection  
- S.E. corner of Vineyard Blvd. (E.B.) and Liliha St.  
intersection

FED. ROAD DIST. NO.	STATE	FED. AID PROJ. NO.	FISCAL YEAR	SHEET NO.	TOTAL SHEETS
HAWAII	HAW.	STP-098-1(K011)	2012	37	64



NOTES:

1. Loop detector location and quantity shown on this plan are only approximate. Contractor shall coordinate with C&C DTS Signal Shop (Supervisor Wally Nakihiro @ 564-6101) for all traffic signal-related work. Schedule with C&C DTS Signal Shop at least two weeks in advance of the actual work, including pavement cold planing removing the existing loop detector.
2. Contractor shall perform all traffic signal-related work following field instructions from DTS Signal Shop personnel. Such field instructions shall include, but not limited to, the final location and quantity of the temporary microwave sensors and permanent detector loops. DTS Signal Shop personnel will be responsible for traffic signal controller programming at the traffic signal cabinet to accommodate the temporary and permanent operations.
3. Contractor shall promptly take down and turnover the temporary microwave sensors to DTS when the permanent detector loops are in place and operational. Contractor shall perform all necessary work to restore traffic signal system back to a neat appearance of the electrical trade.

LEGEND FOR AS-BUILT POSTINGS	
	Squiggly line for as-built deletion
	Double line for as-built deletion
Roadway	Text for as-built posting

TRAFFIC SIGNAL LEGEND:

- Existing Traffic Signal Pole  
 Temporary Microwave Detector  
 New Loop Detectors

STATE OF HAWAII  
DEPARTMENT OF TRANSPORTATION  
HIGHWAYS DIVISION

**LOOP DETECTOR PLAN**

VINEYARD BOULEVARD RESURFACING  
Vicinity of Palama St. to End of H-1 On- and Off-Ramp  
Federal Aid Project No. STP-098-1(K011)

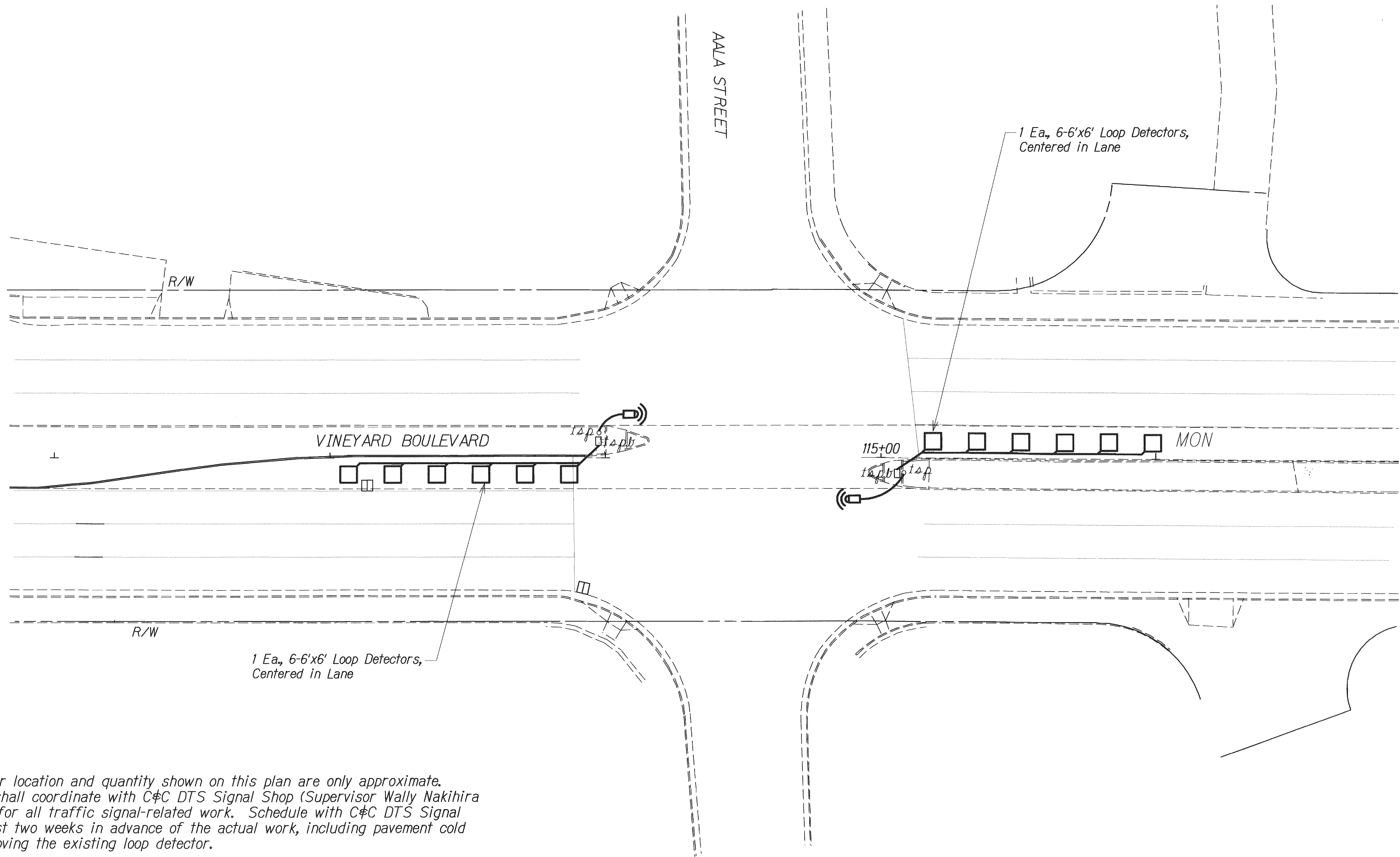
Scale: 1"=20' Date: March 2012

SHEET No. T14 OF 20 SHEETS

SURVEY PLOTTED BY	DATE
DRAWN BY	
DESIGNED BY	
CHECKED BY	
ORIGINAL PLAN	
NOTE BOOK	
No. 2010073	



FED. ROAD DIST. NO.	STATE	FED. AID PROJ. NO.	FISCAL YEAR	SHEET NO.	TOTAL SHEETS
HAWAII	HAW.	STP-098-1(011)	2012	38	64



**NOTES:**

1. Loop detector location and quantity shown on this plan are only approximate. Contractor shall coordinate with C&C DTS Signal Shop (Supervisor Wally Nakihiro @ 564-6101) for all traffic signal-related work. Schedule with C&C DTS Signal Shop at least two weeks in advance of the actual work, including pavement cold planing removing the existing loop detector.
2. Contractor shall perform all traffic signal-related work following field instructions from DTS Signal Shop personnel. Such field instructions shall include, but not limited to, the final location and quantity of the temporary microwave sensors and permanent detector loops. DTS Signal Shop personnel will be responsible for traffic signal controller programming at the traffic signal cabinet to accommodate the temporary and permanent operations.
3. Contractor shall promptly take down and turnover the temporary microwave sensors to DTS when the permanent detector loops are in place and operational. Contractor shall perform all necessary work to restore traffic signal system back to a neat appearance of the electrical trade.

**TRAFFIC SIGNAL LEGEND:**

- tsp Existing Traffic Signal Pole
- ⌋ Temporary Microwave Detector
- New Loop Detectors

STATE OF HAWAII  
DEPARTMENT OF TRANSPORTATION  
HIGHWAYS DIVISION

**LOOP DETECTOR PLAN**  
VINEYARD BOULEVARD RESURFACING  
Vicinity of Palama St. to End of H-1 On- and Off-Ramp  
Federal Aid Project No. STP-098-1(011)

Scale: 1"=20'      Date: March 2012

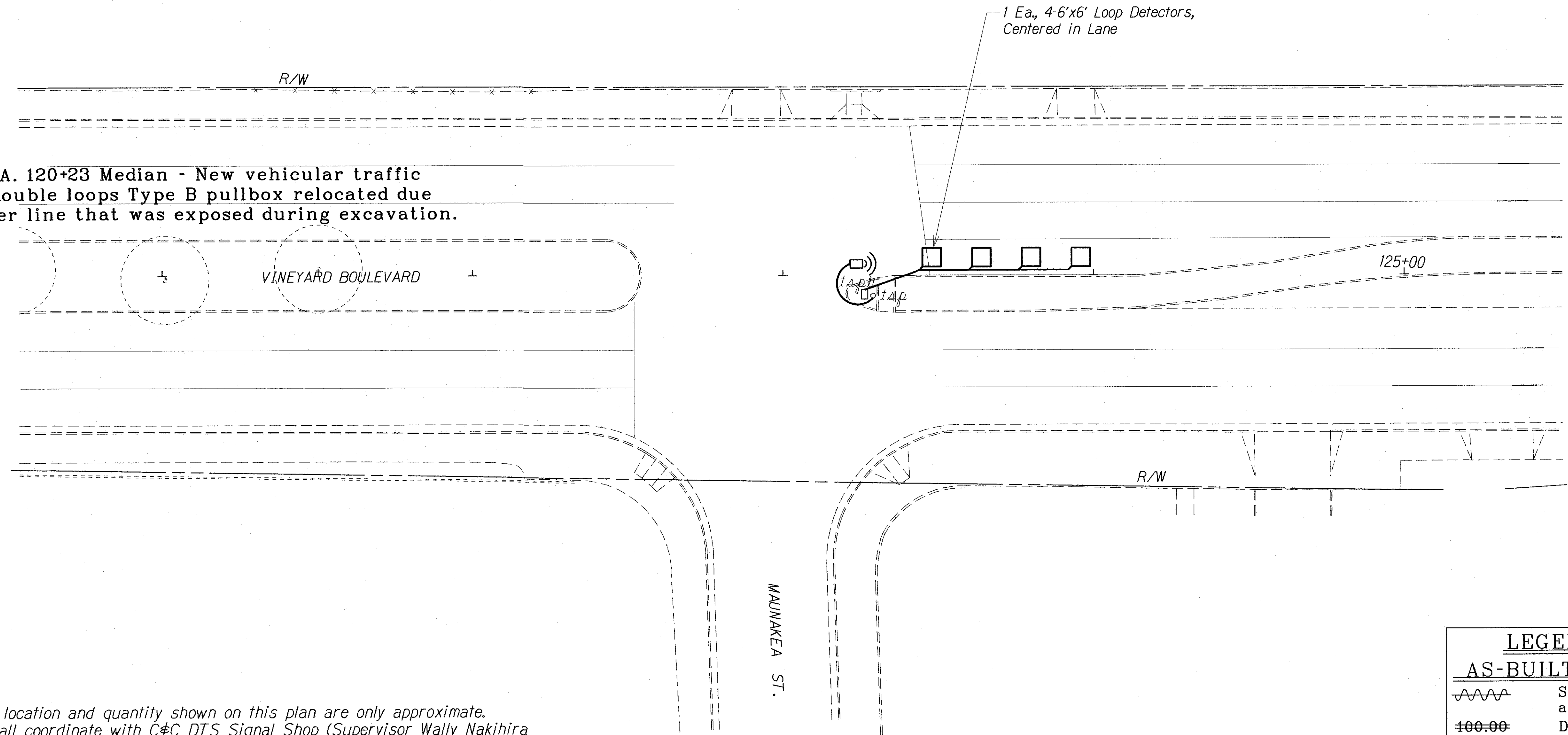
SHEET No. 715 OF 20 SHEETS

DESIGNED BY	DATE
TRACED BY	
DESIGNED BY	
QUANTITIES BY	
CHECKED BY	
ORIGINAL PLAN	
NOTE BOOK	
No. 261604	

FED. ROAD DIST. NO.	STATE	FED. AID PROJ. NO.	FISCAL YEAR	SHEET NO.	TOTAL SHEETS
HAWAII	HAW.	STP-098-1(K011)	2012	39	64

This Change Order \*11 authorizes the following:  
Replace the brittle wiring in the traffic signal mast arms as directed by the City & County Traffic Signal Inspector (Sandy Honda) at:  
- East median nose of Vineyard Blvd. (E.B.) and Maunakea St. intersection

CCO \*06 STA. 120+23 Median - New vehicular traffic counting double loops Type B pullbox relocated due to 1.5' water line that was exposed during excavation.



NOTES:

1. Loop detector location and quantity shown on this plan are only approximate. Contractor shall coordinate with C&C DTS Signal Shop (Supervisor Wally Nakihira @ 564-6101) for all traffic signal-related work. Schedule with C&C DTS Signal Shop at least two weeks in advance of the actual work, including pavement cold planing removing the existing loop detector.
2. Contractor shall perform all traffic signal-related work following field instructions from DTS Signal Shop personnel. Such field instructions shall include, but not limited to, the final location and quantity of the temporary microwave sensors and permanent detector loops. DTS Signal Shop personnel will be responsible for traffic signal controller programming at the traffic signal cabinet to accommodate the temporary and permanent operations.
3. Contractor shall promptly take down and turnover the temporary microwave sensors to DTS when the permanent detector loops are in place and operational. Contractor shall perform all necessary work to restore traffic signal system back to a neat appearance of the electrical trade.

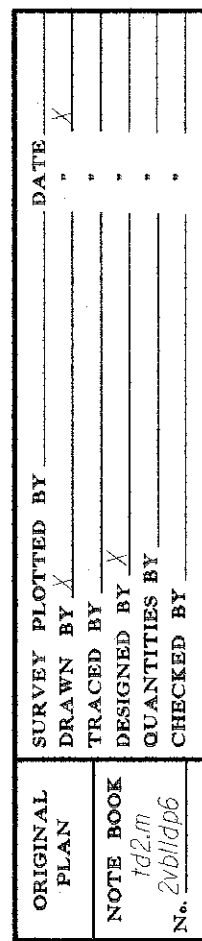
LEGEND FOR AS-BUILT POSTINGS	
	Squiggly line for as-built deletion
	Double line for as-built deletion
Roadway	Text for as-built posting

TRAFFIC SIGNAL LEGEND:

- Existing Traffic Signal Pole
- Temporary Microwave Detector
- New Loop Detectors

STATE OF HAWAII DEPARTMENT OF TRANSPORTATION HIGHWAYS DIVISION	
<b>LOOP DETECTOR PLAN</b>	
VINEYARD BOULEVARD RESURFACING Vicinity of Palama St. to End of H-1 On- and Off-Ramp Federal Aid Project No. STP-098-1(K011)	
Scale: 1"=20'	Date: March 2012
SHEET No. 716 OF 20 SHEETS	

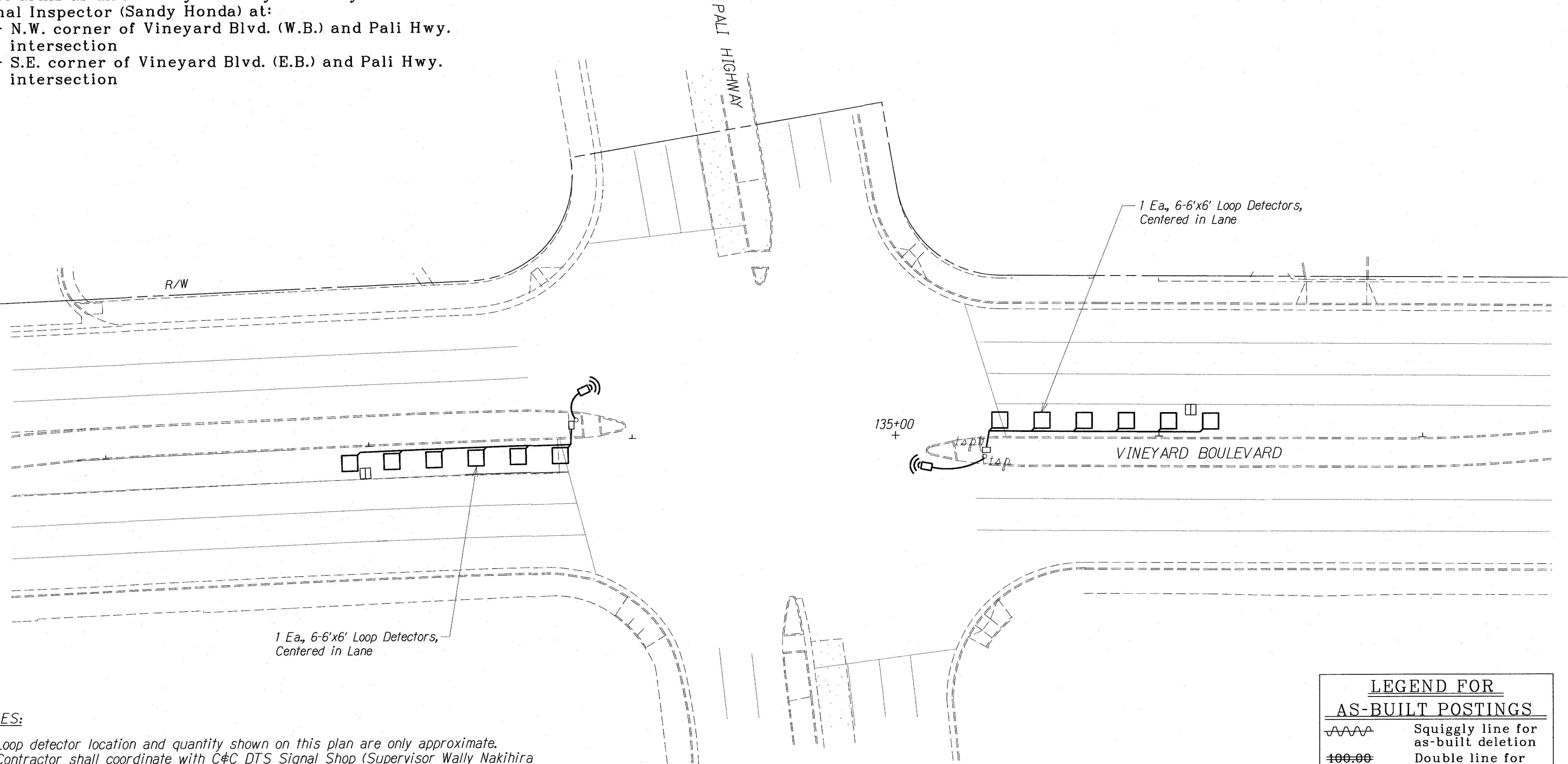
FED. ROAD DIST. NO.	STATE	FED. AID PROJ. NO.	FISCAL YEAR	SHEET NO.	TOTAL SHEETS
HAWAII	HAW.	STP-098-1(011)	2012	40	64





This Change Order #11 authorizes the following:  
Replace the brittle wiring in the traffic signal  
mast arms as directed by the City & County Traffic  
Signal Inspector (Sandy Honda) at:  
- N.W. corner of Vineyard Blvd. (W.B.) and Pali Hwy.  
intersection  
- S.E. corner of Vineyard Blvd. (E.B.) and Pali Hwy.  
intersection

FED. ROAD DIST. NO.	STATE	FED. AID PROJ. NO.	FISCAL YEAR	SHEET NO.	TOTAL SHEETS
HAWAII	HAW.	STP-098-1(011)	2012	41	64



NOTES:

1. Loop detector location and quantity shown on this plan are only approximate. Contractor shall coordinate with C&C DTS Signal Shop (Supervisor Wally Nakihiro @ 564-6101) for all traffic signal-related work. Schedule with C&C DTS Signal Shop at least two weeks in advance of the actual work, including pavement cold planing removing the existing loop detector.
2. Contractor shall perform all traffic signal-related work following field instructions from DTS Signal Shop personnel. Such field instructions shall include, but not limited to, the final location and quantity of the temporary microwave sensors and permanent detector loops. DTS Signal Shop personnel will be responsible for traffic signal controller programming at the traffic signal cabinet to accommodate the temporary and permanent operations.
3. Contractor shall promptly take down and turnover the temporary microwave sensors to DTS when the permanent detector loops are in place and operational. Contractor shall perform all necessary work to restore traffic signal system back to a neat appearance of the electrical trade.

LEGEND FOR AS-BUILT POSTINGS	
	Squiggly line for as-built deletion
	Double line for as-built deletion
Roadway	Text for as-built posting

TRAFFIC SIGNAL LEGEND:

- Existing Traffic Signal Pole  
 Temporary Microwave Detector  
 New Loop Detectors

STATE OF HAWAII  
DEPARTMENT OF TRANSPORTATION  
HIGHWAYS DIVISION

LOOP DETECTOR PLAN

VINEYARD BOULEVARD RESURFACING  
Vicinity of Palama St. to End of H-1 On- and Off-Ramp  
Federal Aid Project No. STP-098-1(011)

Scale: 1"=20'      Date: March 2012

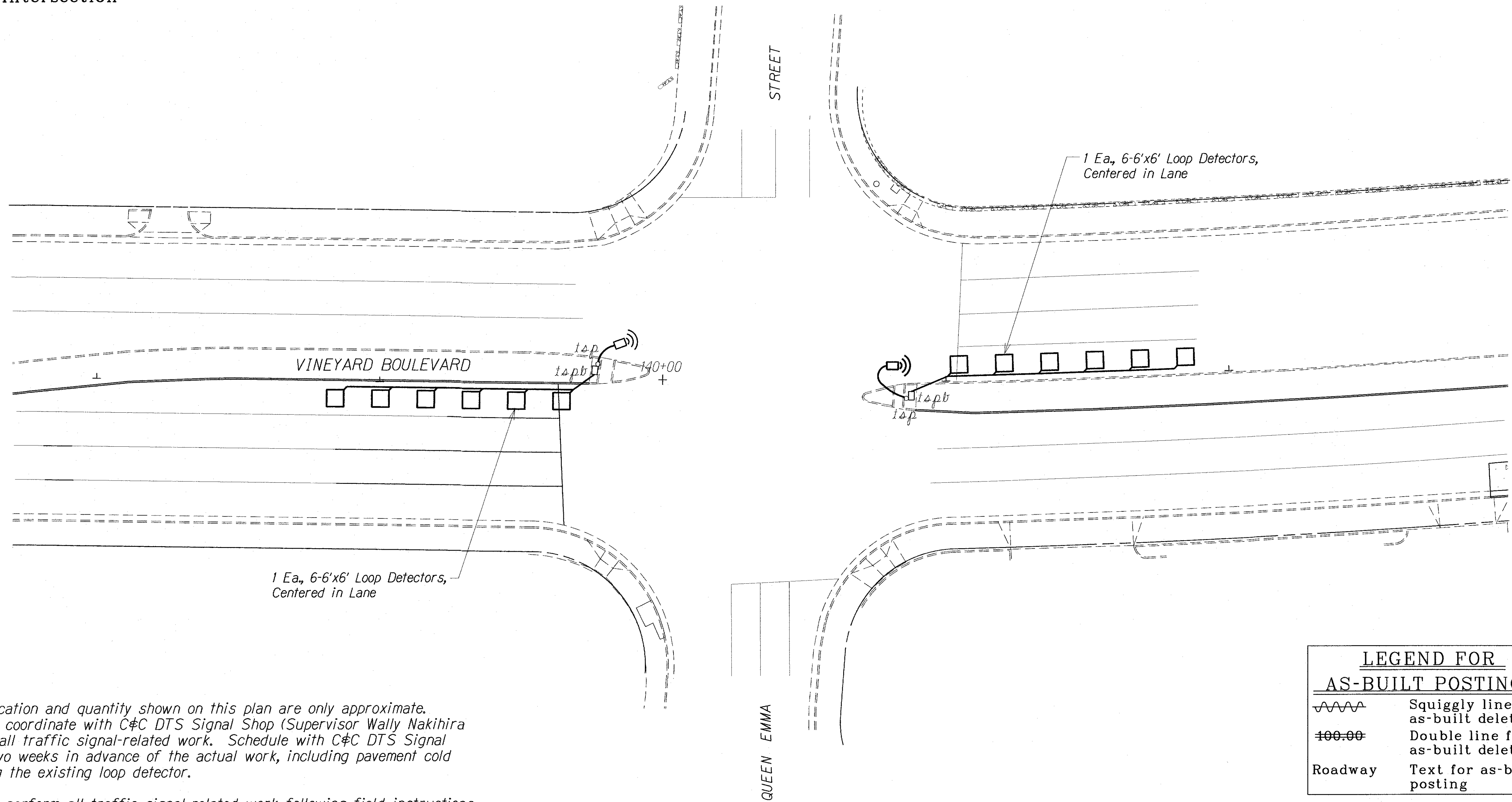
SHEET No. T18 OF 20 SHEETS

SURVEY PLOTTED BY	DATE
DRAWN BY	
DESIGNED BY	
NOTED BY	
QUANTITIES BY	
CHECKED BY	

ORIGINAL PLAN	102.00
NOTE BOOK	102.00
NO. 200/500	

This Change Order \*11 authorizes the following:  
Replace the brittle wiring in the traffic signal  
mast arms as directed by the City & County Traffic  
Signal Inspector (Sandy Honda) at:  
- S.E. corner of Vineyard Blvd. (E.B.) and Queen  
Emma St. intersection  
- N.W. corner of Vineyard Blvd. (W.B.) and Queen  
Emma St. intersection

FED. ROAD DIST. NO.	STATE	FED. AID PROJ. NO.	FISCAL YEAR	SHEET NO.	TOTAL SHEETS
HAWAII	HAW.	STP-098-1(011)	2012	42	64



NOTES:

1. Loop detector location and quantity shown on this plan are only approximate. Contractor shall coordinate with C&C DTS Signal Shop (Supervisor Wally Nakihiro @ 564-6101) for all traffic signal-related work. Schedule with C&C DTS Signal Shop at least two weeks in advance of the actual work, including pavement cold planing removing the existing loop detector.
2. Contractor shall perform all traffic signal-related work following field instructions from DTS Signal Shop personnel. Such field instructions shall include, but not limited to, the final location and quantity of the temporary microwave sensors and permanent detector loops. DTS Signal Shop personnel will be responsible for traffic signal controller programming at the traffic signal cabinet to accommodate the temporary and permanent operations.
3. Contractor shall promptly take down and turnover the temporary microwave sensors to DTS when the permanent detector loops are in place and operational. Contractor shall perform all necessary work to restore traffic signal system back to a neat appearance of the electrical trade.

ORIGINAL PLAN	SURVEY PLOTTED BY	DATE
NOTE BOOK	DRAWN BY	
142m	CHECKED BY	
N. 2/10/08		

TRAFFIC SIGNAL LEGEND:

- tsp Existing Traffic Signal Pole
- (((□ Temporary Microwave Detector
- □ New Loop Detectors

LEGEND FOR AS-BUILT POSTINGS	
	Squiggly line for as-built deletion
	Double line for as-built deletion
Roadway	Text for as-built posting

STATE OF HAWAII  
DEPARTMENT OF TRANSPORTATION  
HIGHWAYS DIVISION

LOOP DETECTOR PLAN

VINEYARD BOULEVARD RESURFACING  
Vicinity of Palama St. to End of H-1 On- and Off-Ramp  
Federal Aid Project No. STP-098-1(011)

Scale: 1"=20'      Date: March 2012

SHEET No. T19 OF 20 SHEETS

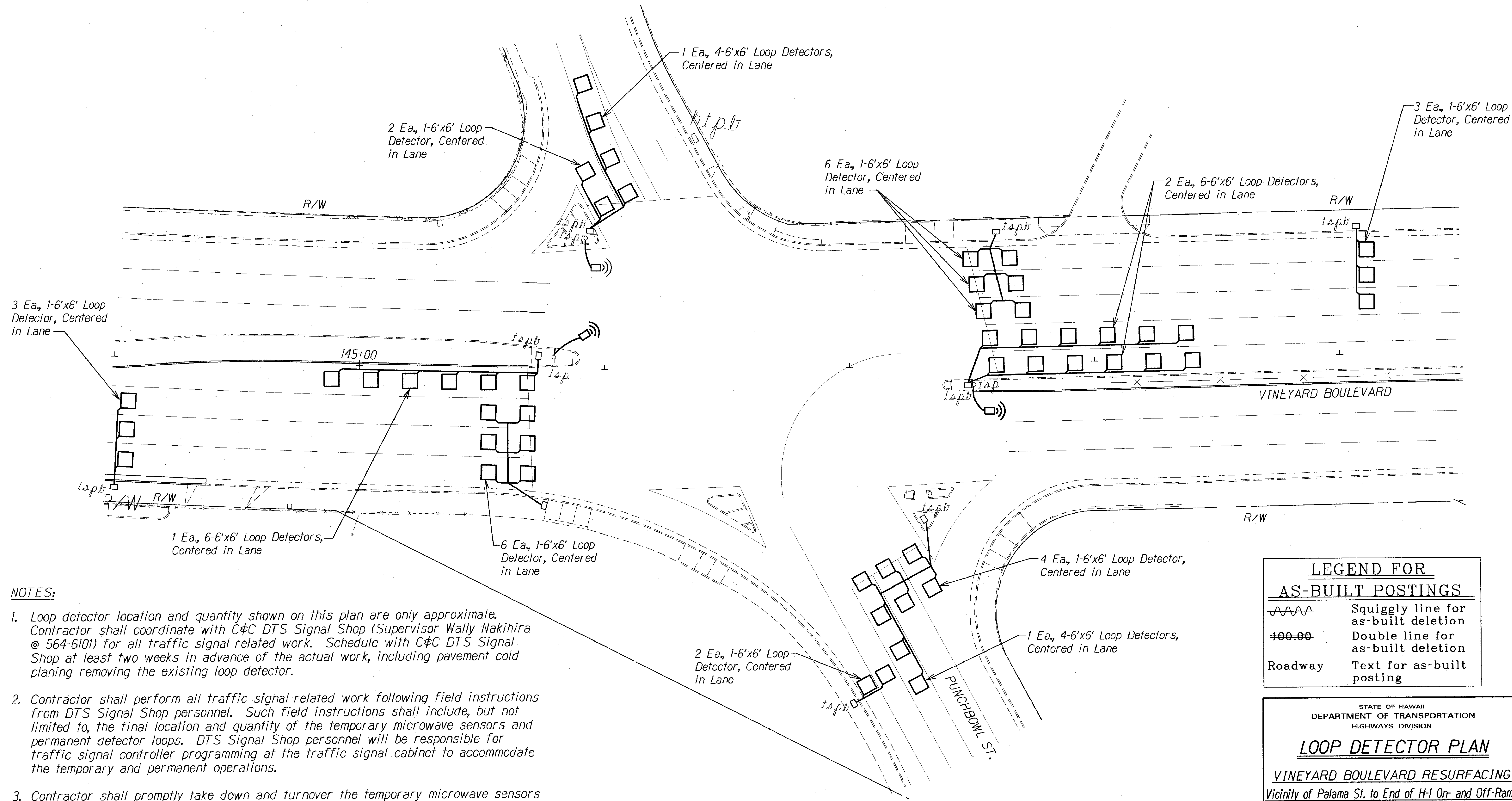


FED. ROAD DIST. NO.	STATE	FED. AID PROJ. NO.	FISCAL YEAR	SHEET NO.	TOTAL SHEETS
HAWAII	HAW.	STP-098-1(011)	2012	43	64

TRAFFIC SIGNAL LEGEND:

- Existing Traffic Signal Pole
- Temporary Microwave Detector
- New Loop Detectors

This Change Order #11 authorizes the following:  
 Replace the brittle wiring in the traffic signal mast arms as directed by the City & County Traffic Signal Inspector (Sandy Honda) at:  
 - S.E. corner of Vineyard Blvd. (E.B.) and Punchbowl St. intersection  
 - N.W. corner of Vineyard Blvd. (W.B.) and Punchbowl St. intersection



NOTES:

- Loop detector location and quantity shown on this plan are only approximate. Contractor shall coordinate with C&C DTS Signal Shop (Supervisor Wally Nakihiro @ 564-6101) for all traffic signal-related work. Schedule with C&C DTS Signal Shop at least two weeks in advance of the actual work, including pavement cold planing removing the existing loop detector.
- Contractor shall perform all traffic signal-related work following field instructions from DTS Signal Shop personnel. Such field instructions shall include, but not limited to, the final location and quantity of the temporary microwave sensors and permanent detector loops. DTS Signal Shop personnel will be responsible for traffic signal controller programming at the traffic signal cabinet to accommodate the temporary and permanent operations.
- Contractor shall promptly take down and turnover the temporary microwave sensors to DTS when the permanent detector loops are in place and operational. Contractor shall perform all necessary work to restore traffic signal system back to a neat appearance of the electrical trade.

LEGEND FOR AS-BUILT POSTINGS	
	Squiggly line for as-built deletion
	Double line for as-built deletion
Roadway	Text for as-built posting

STATE OF HAWAII  
DEPARTMENT OF TRANSPORTATION  
HIGHWAYS DIVISION

### LOOP DETECTOR PLAN

VINEYARD BOULEVARD RESURFACING  
 Vicinity of Palama St. to End of H-1 On- and Off-Ramp  
 Federal Aid Project No. STP-098-1(011)

Scale: 1"=20'      Date: March 2012

ORIGINAL PLAN	SURVEY PLOTTED BY	DATE
NOTE BOOK	DRAWN BY	
DESIGNED BY	CHECKED BY	
DATE		
NO.		