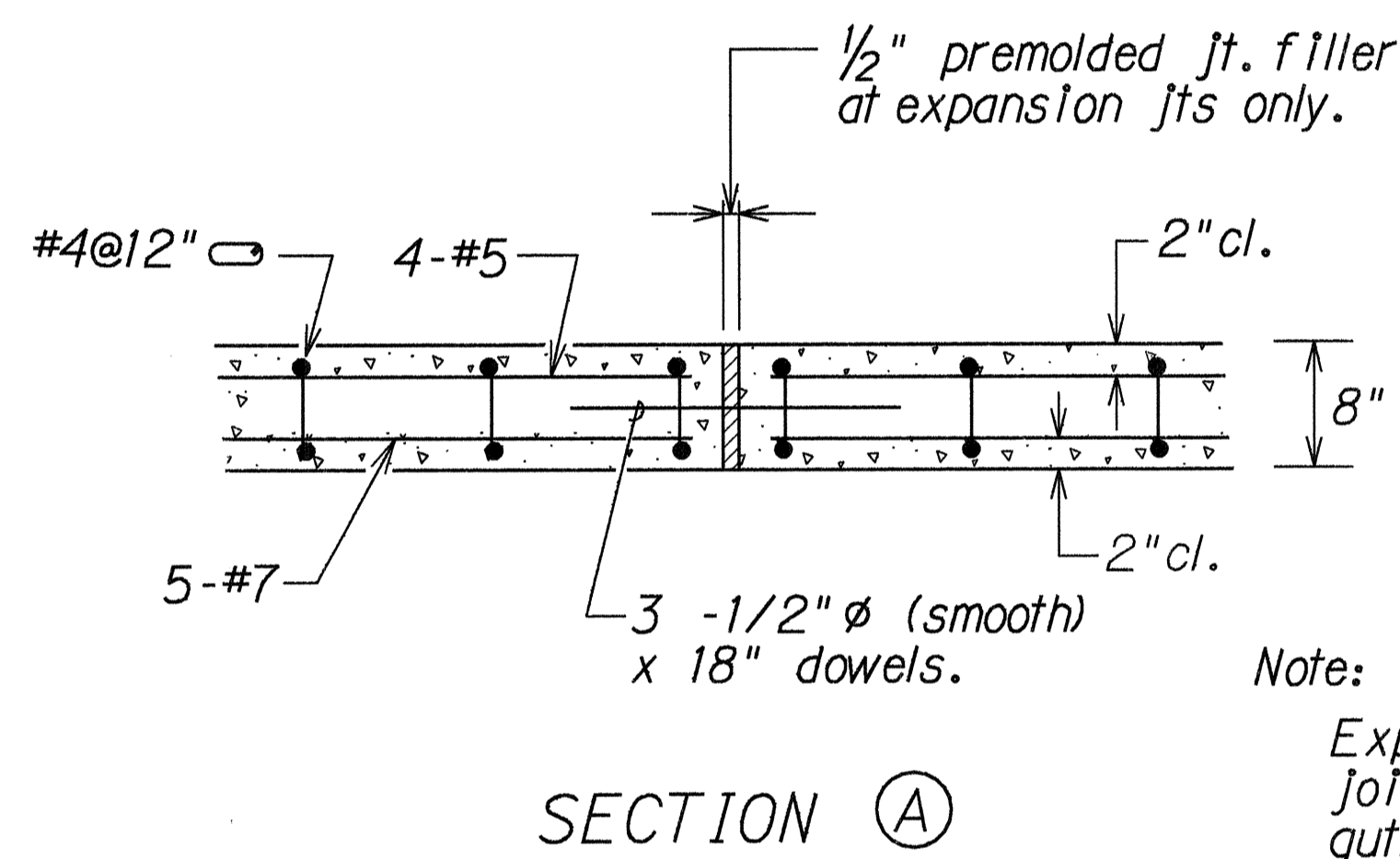
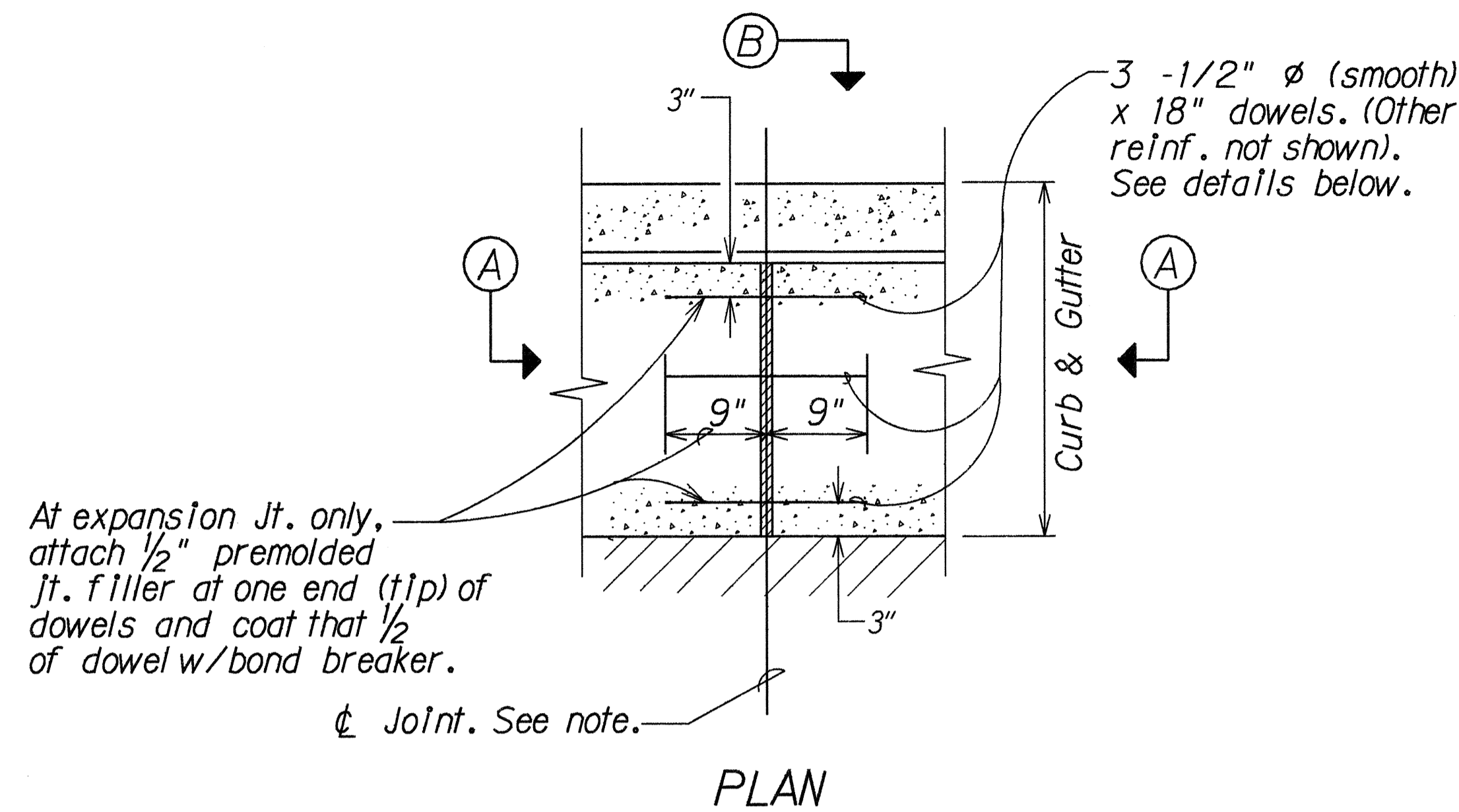
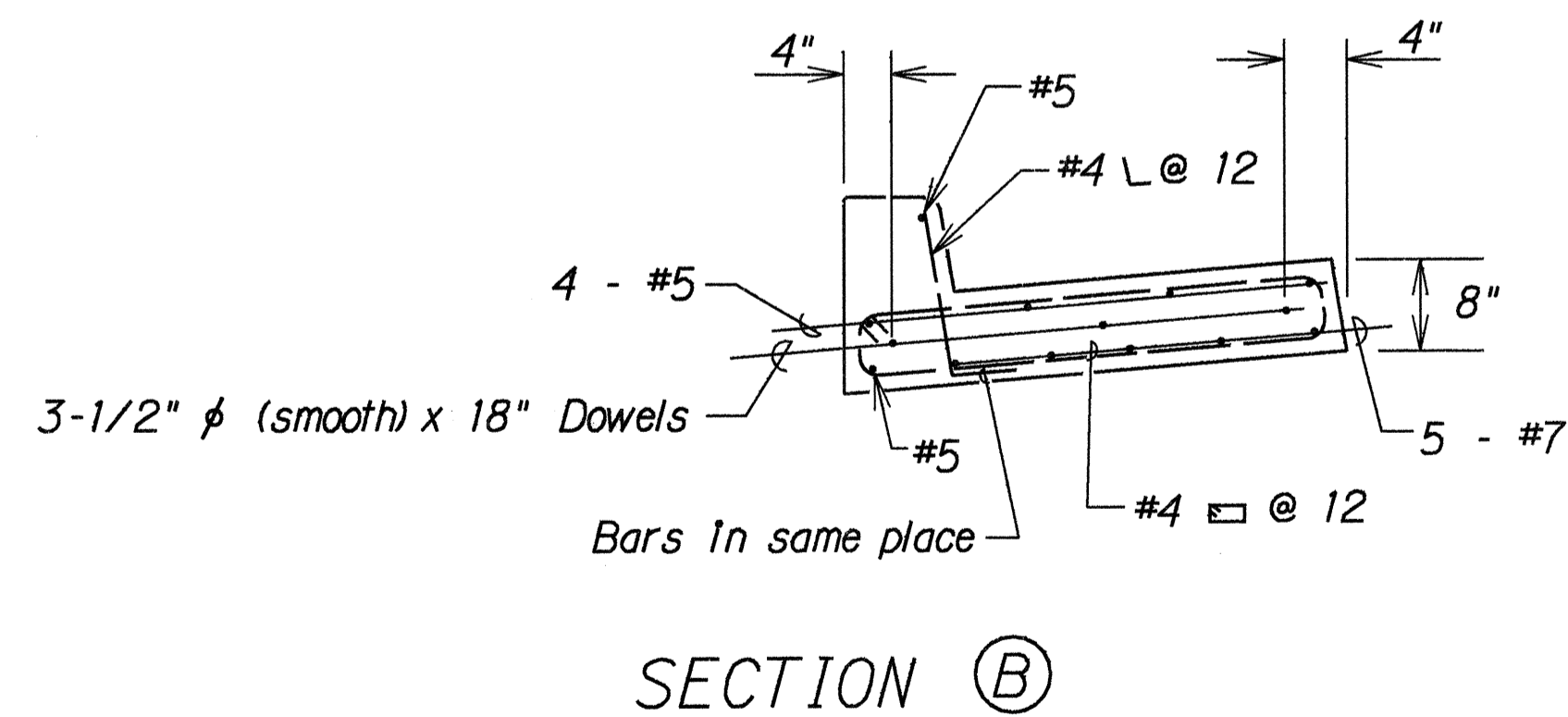


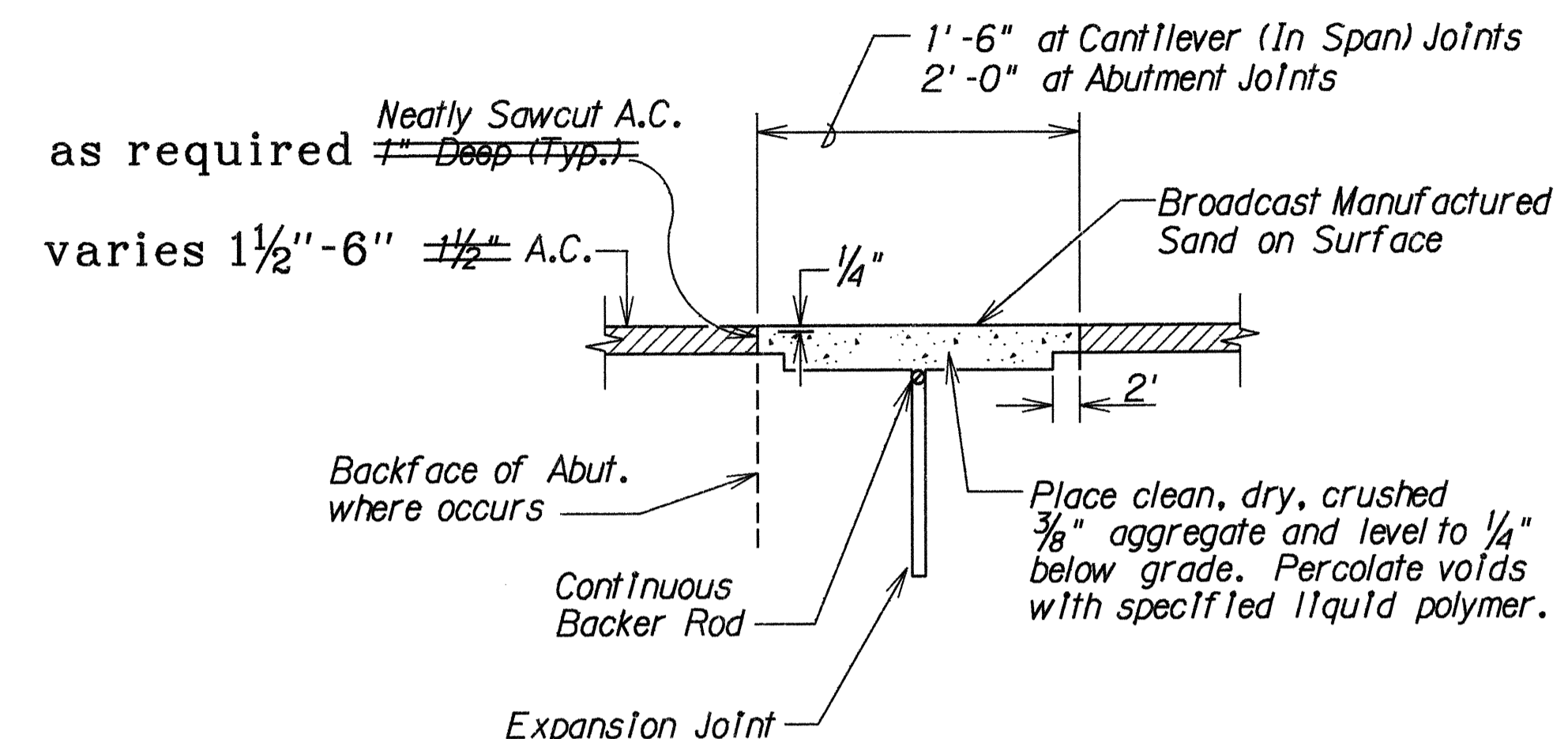
FED. ROAD DIST. NO.	STATE	FED. AID PROJ. NO.	FISCAL YEAR	SHEET NO.	TOTAL SHEETS
HAWAII	HAW.	STP-098-1(10)	1993	7	35



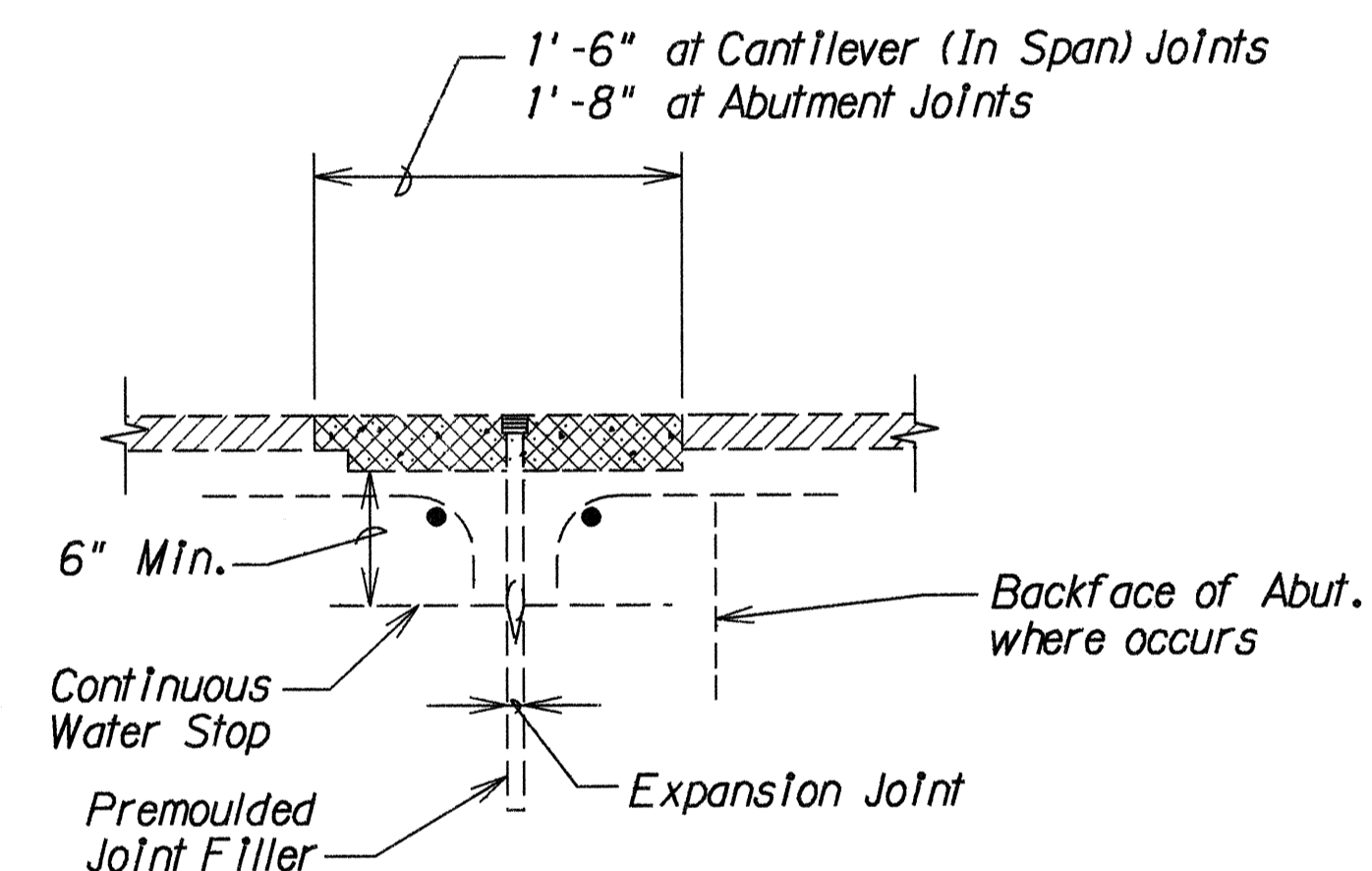
Note:
Expansion & construction joints in the new curb and gutter shall be constructed directly in line with adjoining counterpart occurring in existing sidewalk.



MODIFIED TYPE 2DG CURB & GUTTER
Not to Scale



NEW TYPICAL DETAIL @ DECK JOINTS
Not to Scale



EXISTING TYPICAL DETAIL @ DECK JOINTS
Not to Scale

LEGEND FOR AS-BUILT POSTINGS	
	Squiggly line for as-built deletion
	Double line for as-built deletion
Roadway	Text for as-built posting

STATE OF HAWAII
DEPARTMENT OF TRANSPORTATION
HIGHWAYS DIVISION

MISCELLANEOUS DETAILS
VINEYARD BOULEVARD
RESURFACING
H-1 Off-Ramp to H-1 On-Ramp
Fed. Aid Proj. No. STP-098-1(10)
Scale: As Shown Date: Apr., 1993
SHEET No. 1 OF 1 SHEETS

DESIGNED BY	DATE
DRAWN BY	4/15/93
CHECKED BY	
NOTED BY	
QUANTITY BY	
REVISIONS	
NO.	