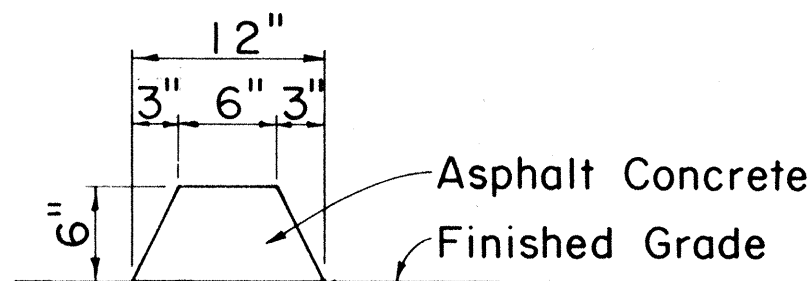
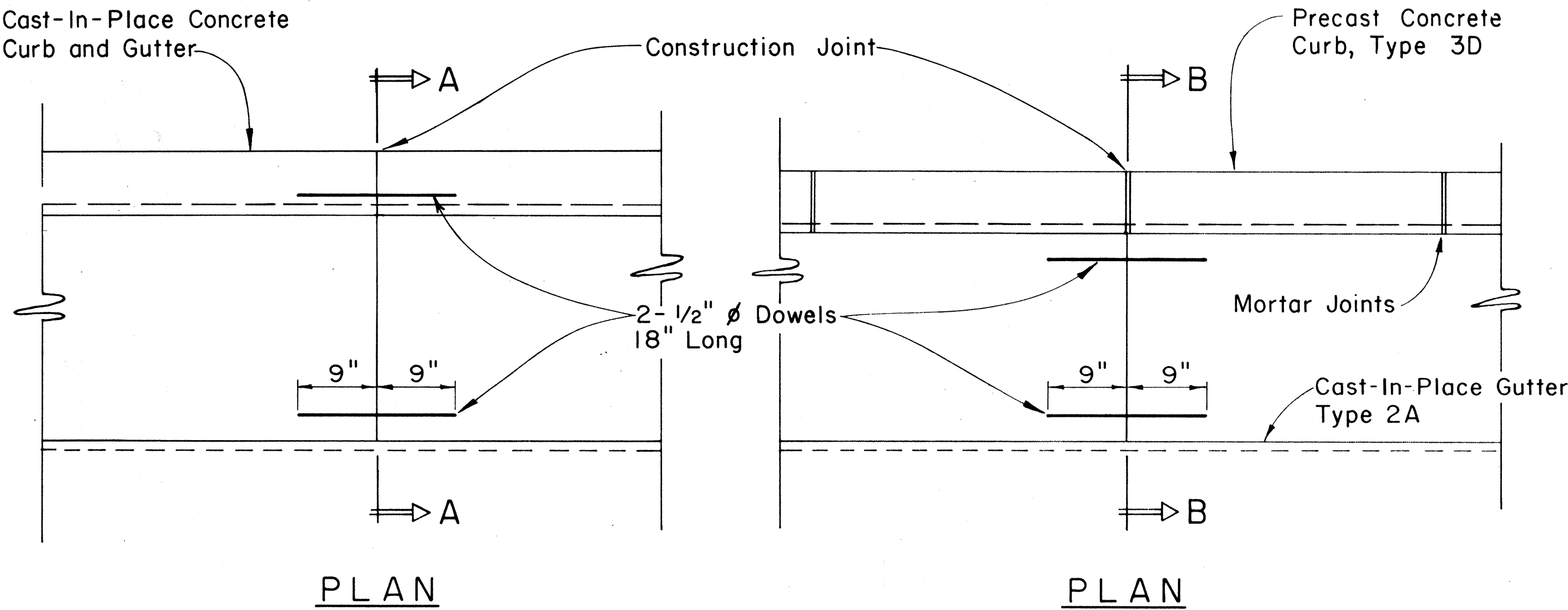


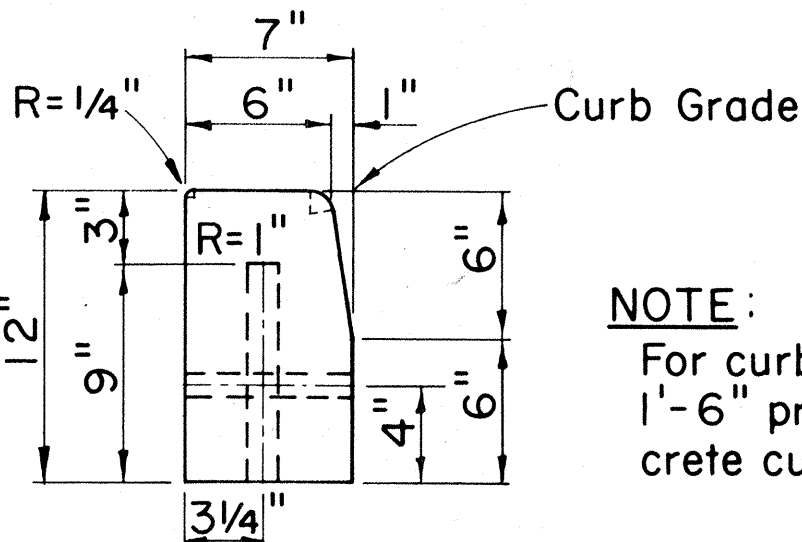
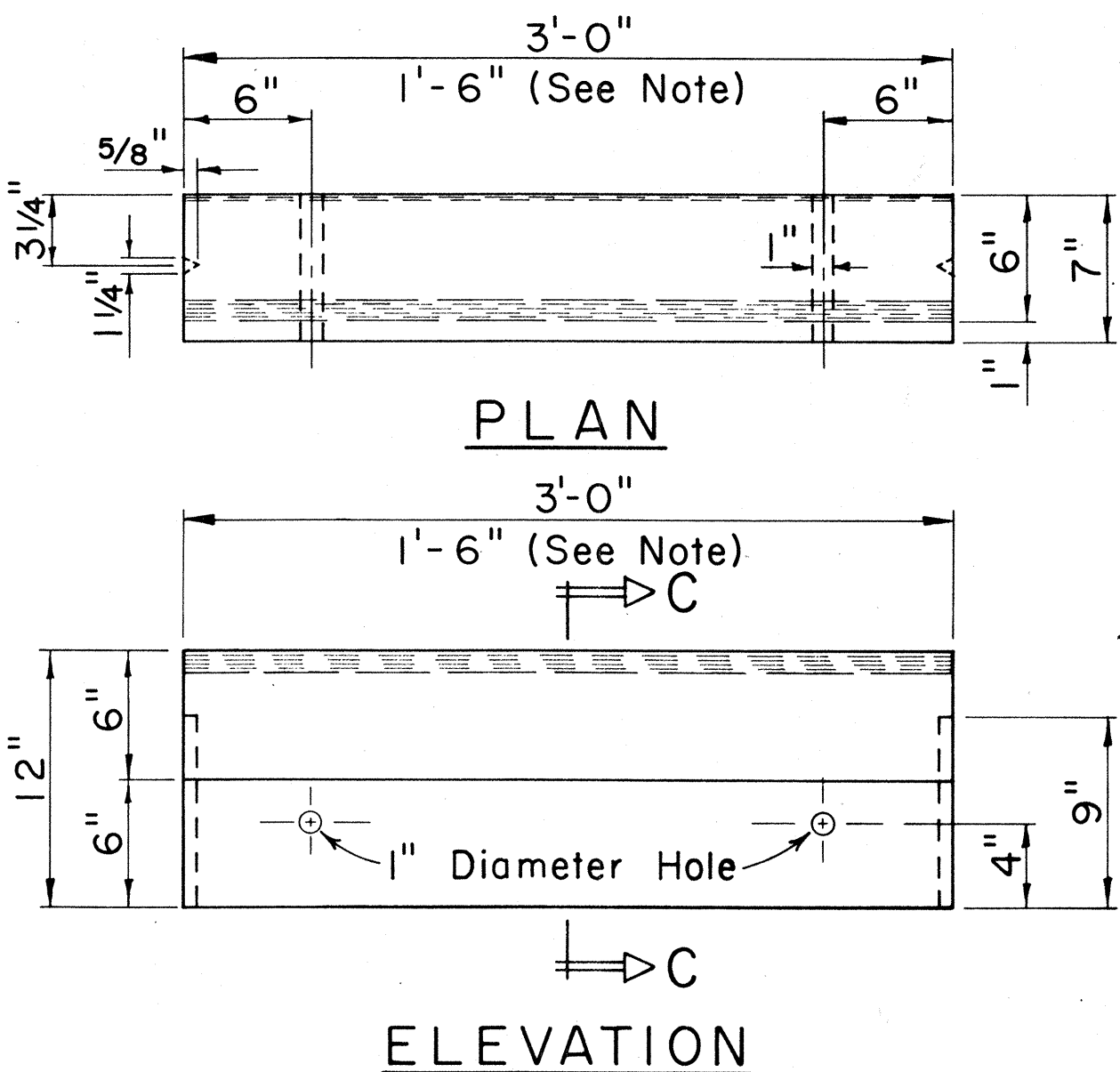
FED. ROAD DIST. NO.	STATE	FED. AID PROJ. NO.	FISCAL YEAR	SHEET NO.	TOTAL SHEETS
HAWAII	HAW.	78A-01-86M	1986	10	16



CURB, TYPE 6

BITUMINOUS CURB

Scale: 1 1/2" = 1'-0"



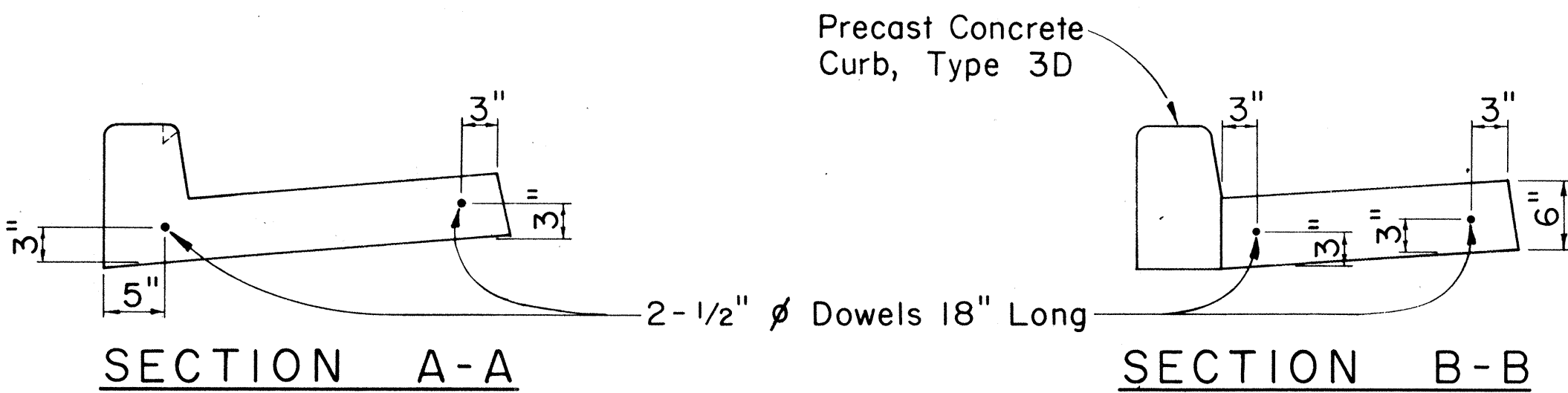
NOTE:
For curb returns use 1'-6" pre-cast concrete curbs.

CURB, TYPE 3D

PRE-CAST CONC. CURB

Scale: 1 1/2" = 1'-0"

- NOTES**
1. Cast-In-Place P.C.C. Gutters shall be longitudinally broom finished.
 2. Curb, Type 2A, Curb & Gutter, Type 2AG, and Curb & Gutter, Type 2AGM are to be used only for reconstructing short segments of existing curbs and/or gutters of the same type.
 3. The top of all types of concrete curbs, including driveway curbs shall be longitudinally broom finished.

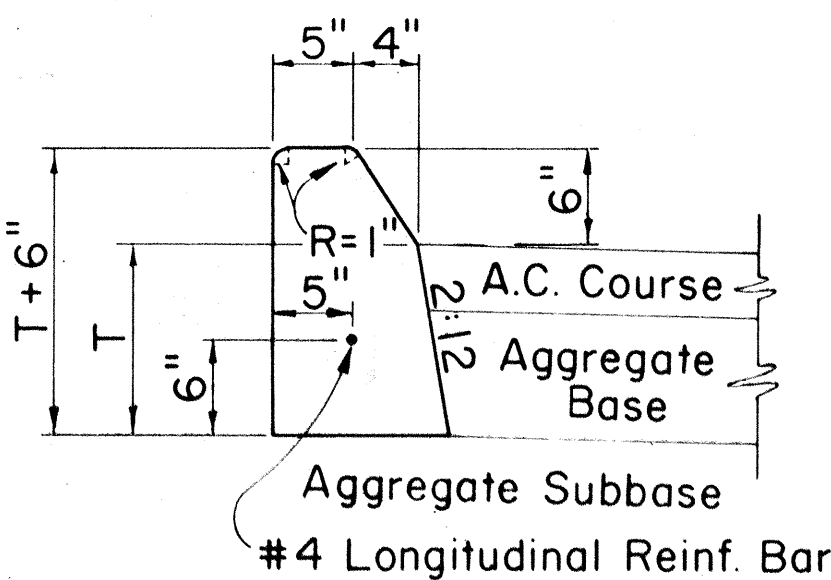


CAST-IN-PLACE CURB & GUTTER

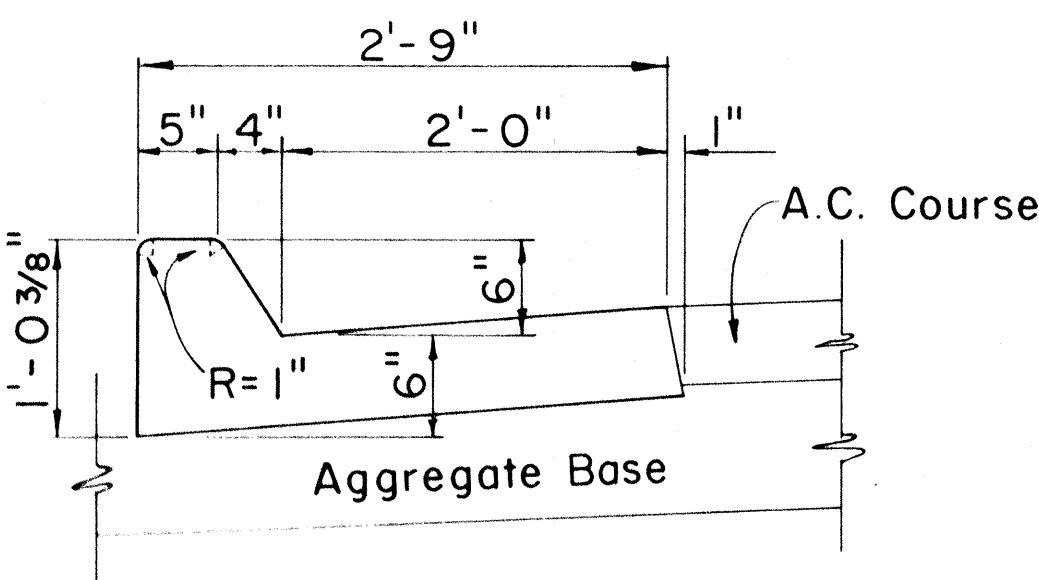
CAST-IN-PLACE GUTTER

CONSTRUCTION JOINT DETAIL

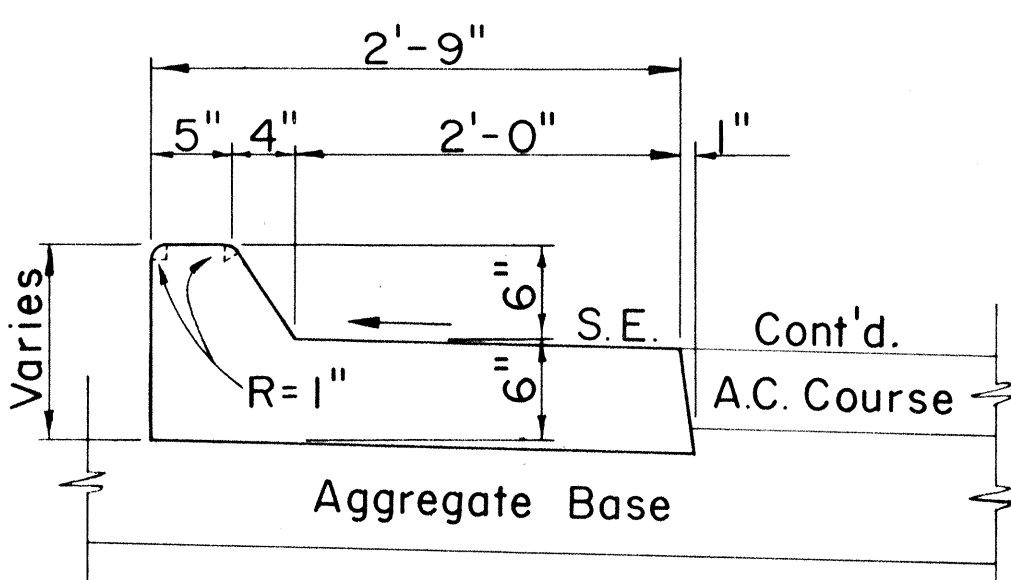
Scale: 1" = 1'-0"



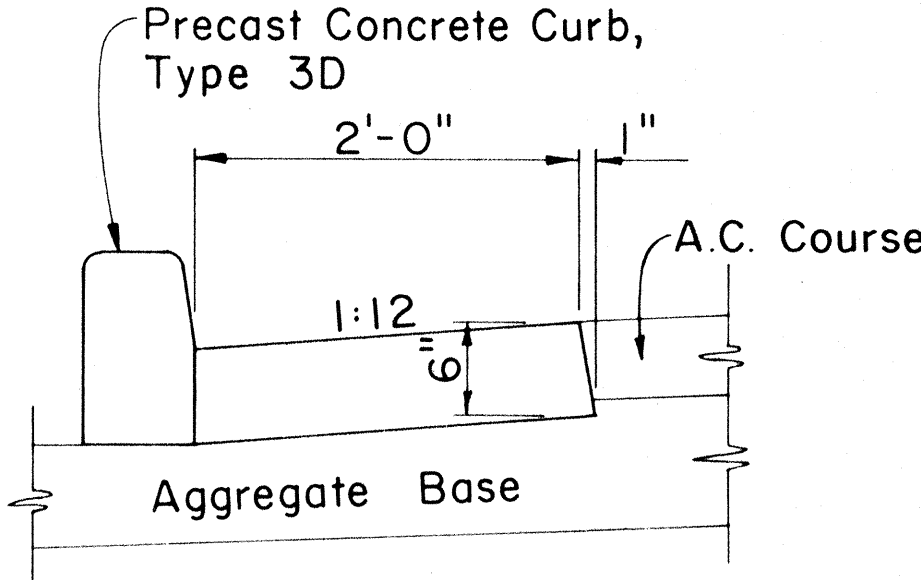
CURB, TYPE 2A



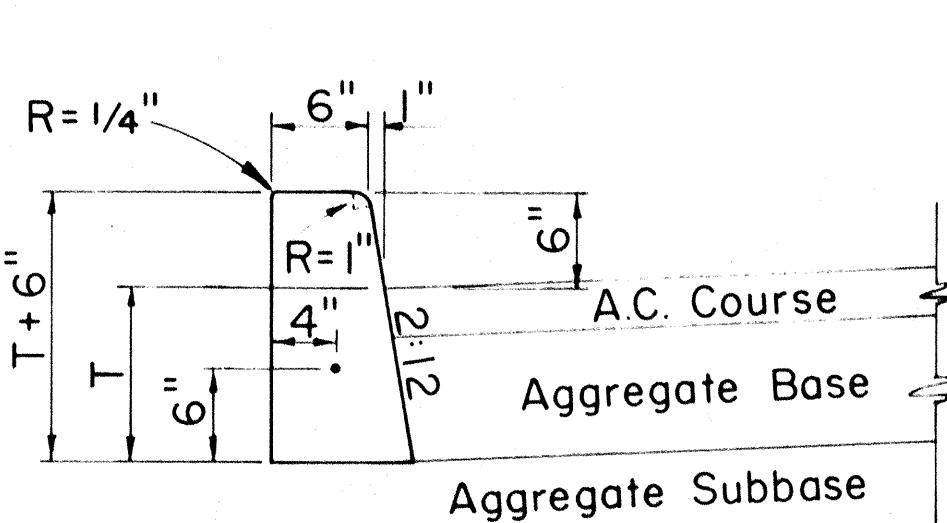
CURB & GUTTER, TYPE 2AG



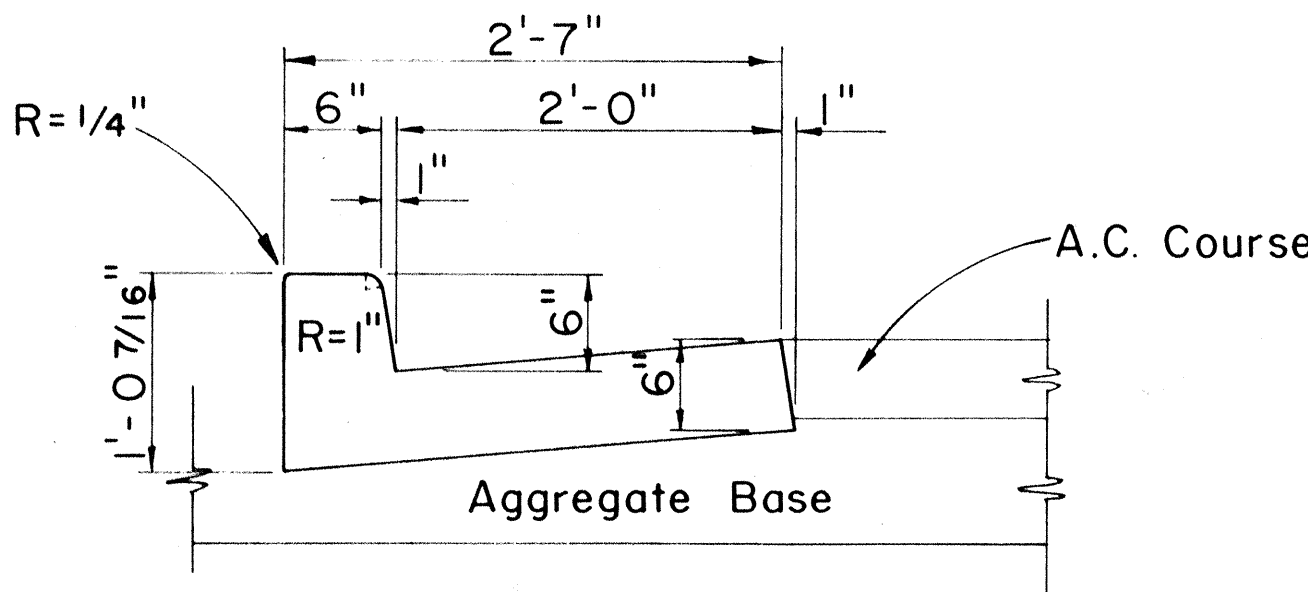
CURB & GUTTER, TYPE 2AGM



GUTTER, TYPE 2A



CURB, TYPE 2D



CURB & GUTTER, TYPE 2DG

CAST-IN-PLACE CONCRETE CURBS AND/OR GUTTERS

Scale: 1" = 1'-0"

APPROVAL RECOMMENDED:

M. Hironaka 12-4-67
HIGHWAY DESIGN ENGINEER DATE

APPROVED:

Shirley S. Sabin 12-10-69
ASSISTANT CHIEF, ENGINEERING DATE

NO.	REVISION	APPROVED BY	DATE
1	Add Notes, Deleted Gutter, Type 2G	<i>[Signature]</i>	11-26-84

STATE OF HAWAII
DEPARTMENT OF TRANSPORTATION
HIGHWAYS DIVISION

STANDARD DETAILS

TYPICAL DETAILS OF CURB

AND/OR GUTTERS

Scale: As Shown

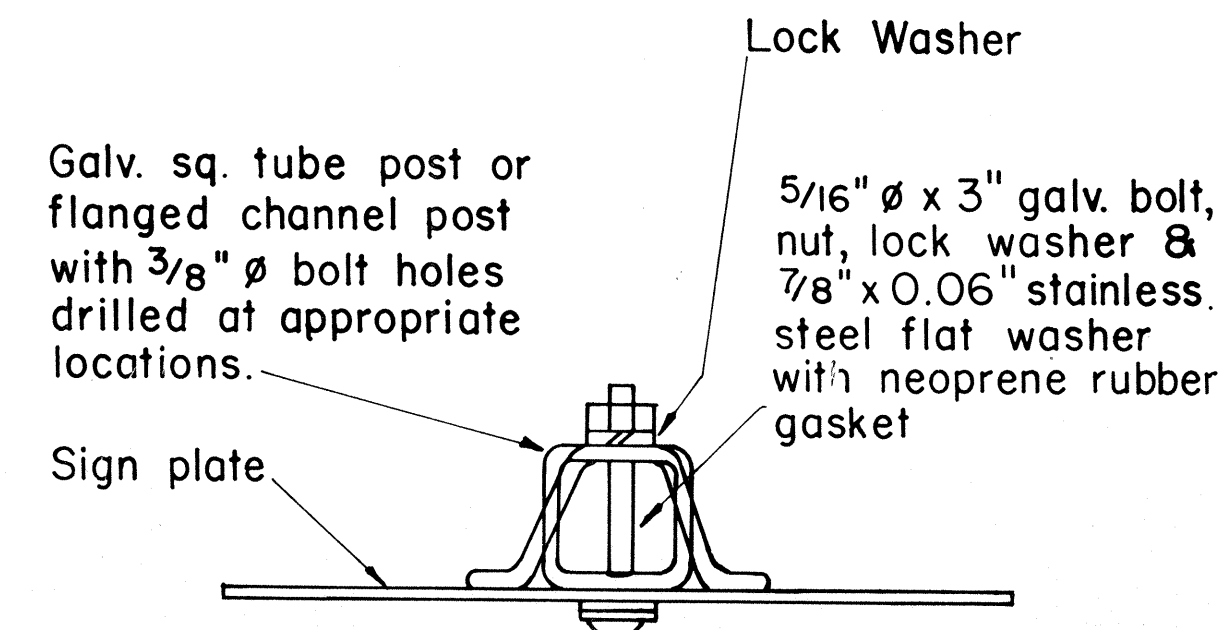
SHEET No. OF SHEETS DD 609.1

ORIGINAL	DATE
PLAN	
DESIGNED BY	
NOTED BY	
CHECKED BY	
DATE	

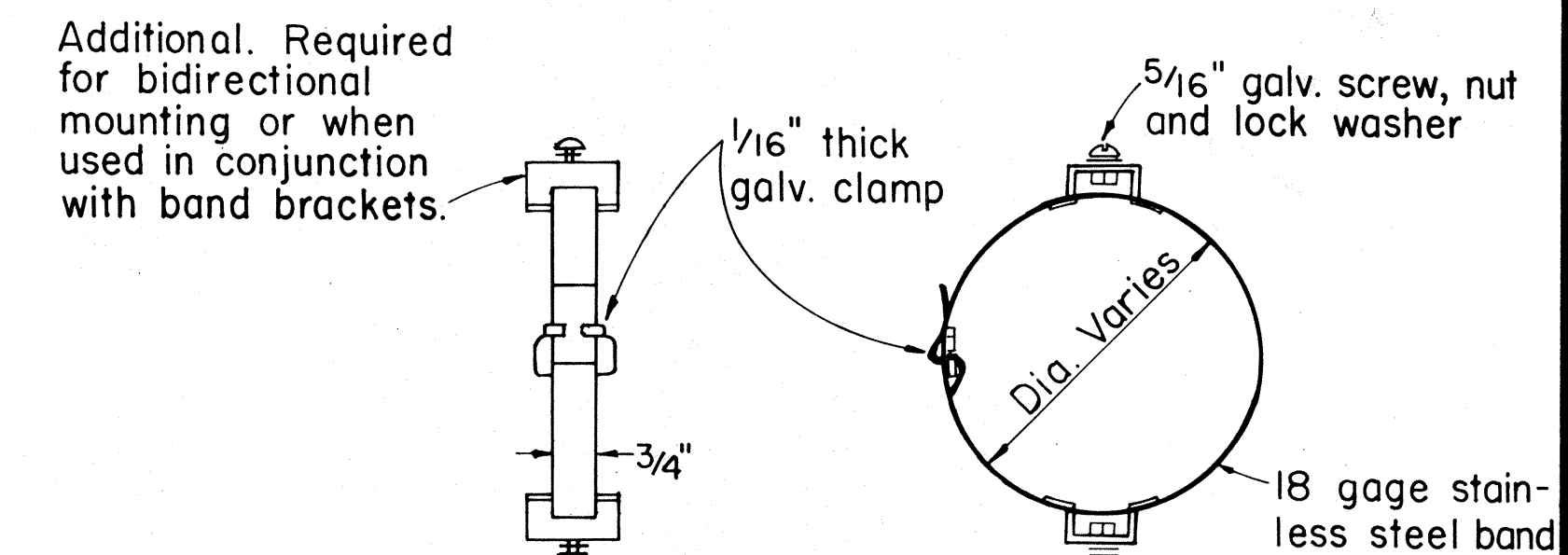
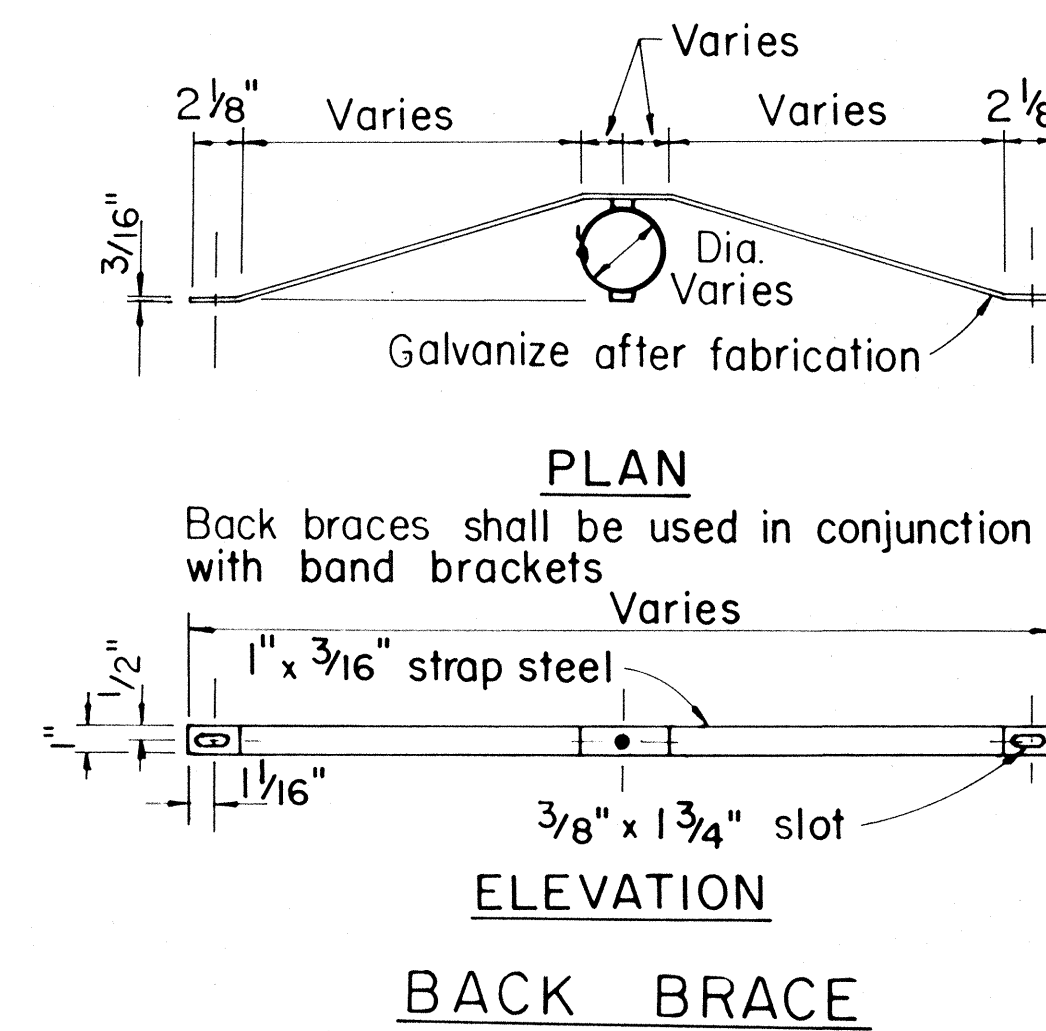
FED. ROAD DIST. NO.	STATE	FED. AID PROJ. NO.	FISCAL YEAR	SHEET NO.	TOTAL SHEETS
HAWAII	HAW.	78A-01-86M	1986	11	16

GENERAL NOTES

- Signs shall be placed in conformance with positions shown and described in the "Manual on Uniform Traffic Control Devices for Streets and Highways", 1978, Part II, Section 2A-2I, as amended, and as supplemented herein.
- Sign 48" and wider or larger than 10 sq. ft. in area shall be mounted on two or more sign posts except as noted below.
- Signs 48" and wider or larger than 10 sq. ft. in area may be mounted on objects other than sign posts (i.e. on highway lighting poles) as follows:
 - Signs 48" and wider but less than 10 sq. ft. in area shall be mounted with a minimum of two sets of band bracket and back braces.
 - Signs larger than 10 sq. ft. and less than 28 sq. ft. in area shall be mounted with a minimum of two sets of band brackets and back braces.
 - Signs larger than 28 sq. ft. in area shall be mounted with a minimum of three sets of band bracket and back braces.
- All parking restriction signs with arrows shall be mounted 45° to the line of traffic flow.
- Sign posts shall extend 3 1/2" above each sign, where required, for attachment of City and County street name signs.
- (R) or (L) indicates right or left and shown on the plans.
- See plans for special details of signs along bikeways.
- The minimum lateral distances shown are guidelines and shall be exceeded whenever possible. The Contractor shall place signs at the maximum practical lateral distance from the edge of the traveled way up to 30 feet and shall utilize protected locations whenever possible. Final locations of all signs shall be approved by the Engineer.
- Signs in medians shall be placed at midpoint of median up to a maximum distance of 30 feet from the edge of traveled way. When appropriate, signs for opposing directions shall be placed back to back.
- Anchor bases shall be installed for all signpost installations, unless otherwise shown or directed. See sheets DT 100A and DT 100B.



GALVANIZED SQUARE TUBE OR FLANGED CHANNEL POST



LEFT SIDE VIEW BAND BRACKET

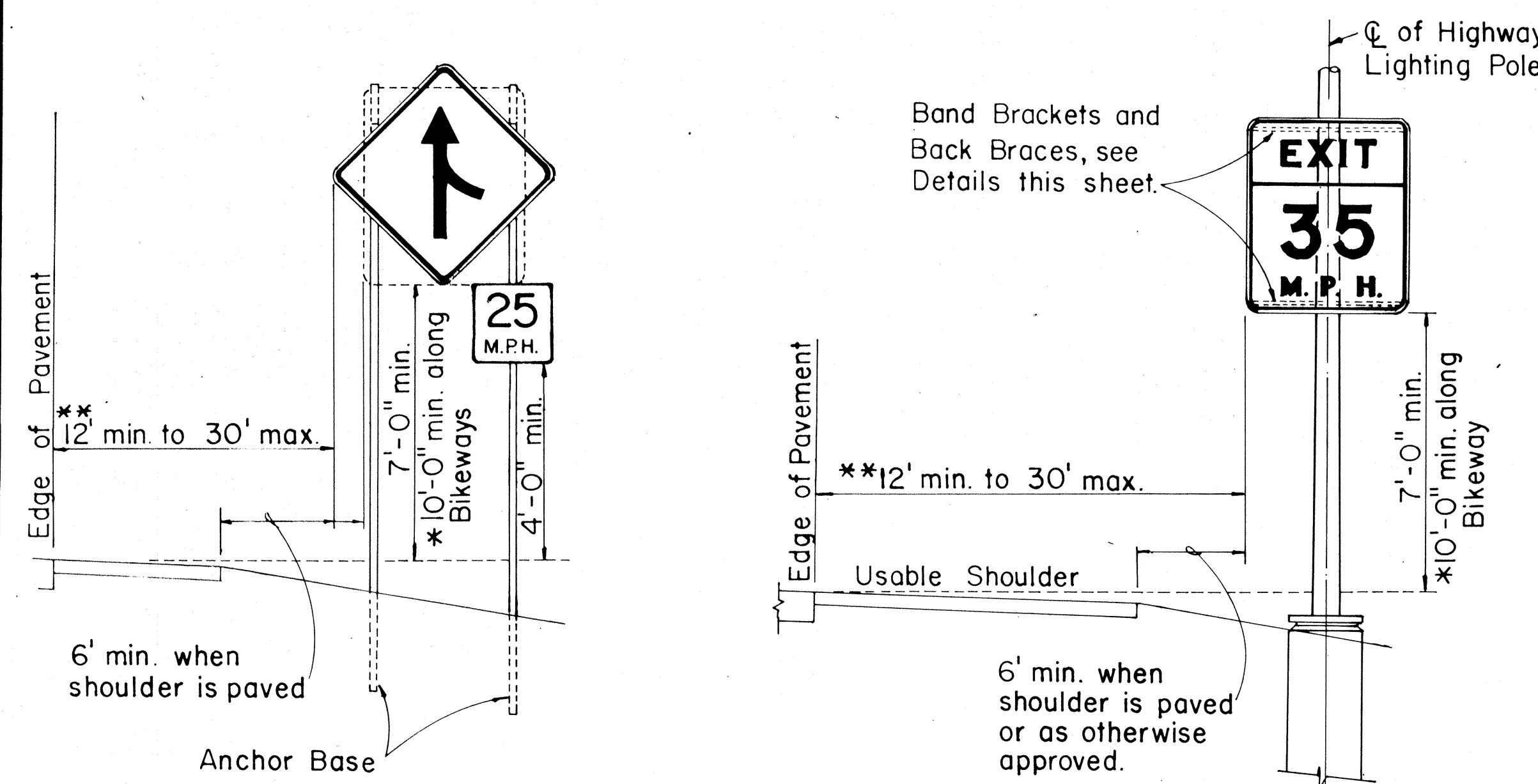
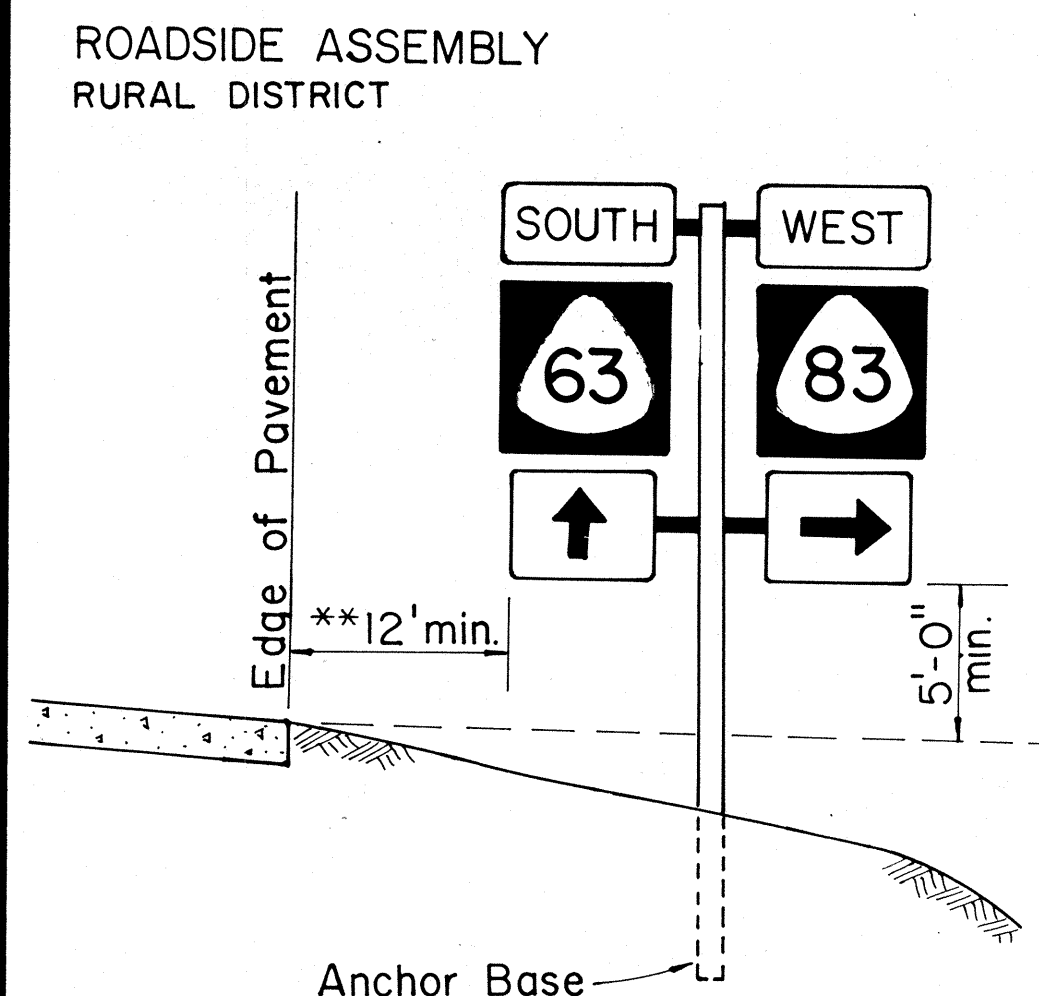
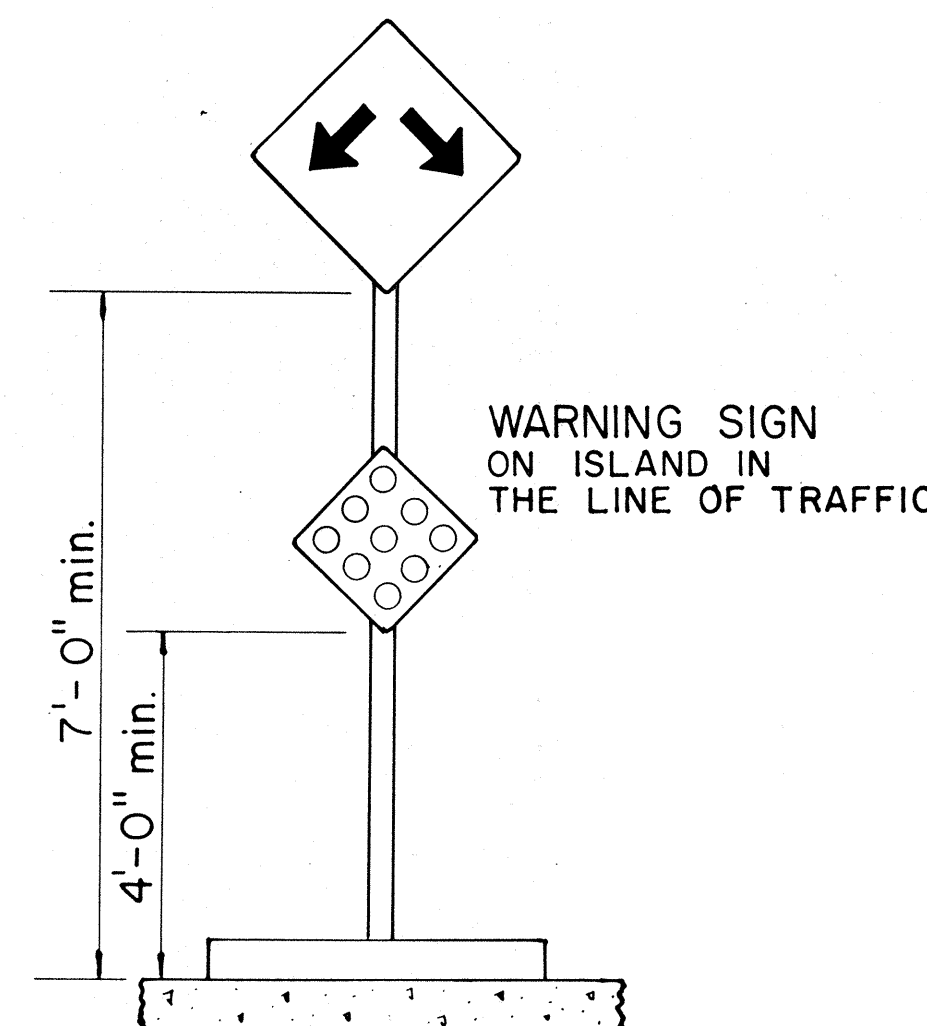
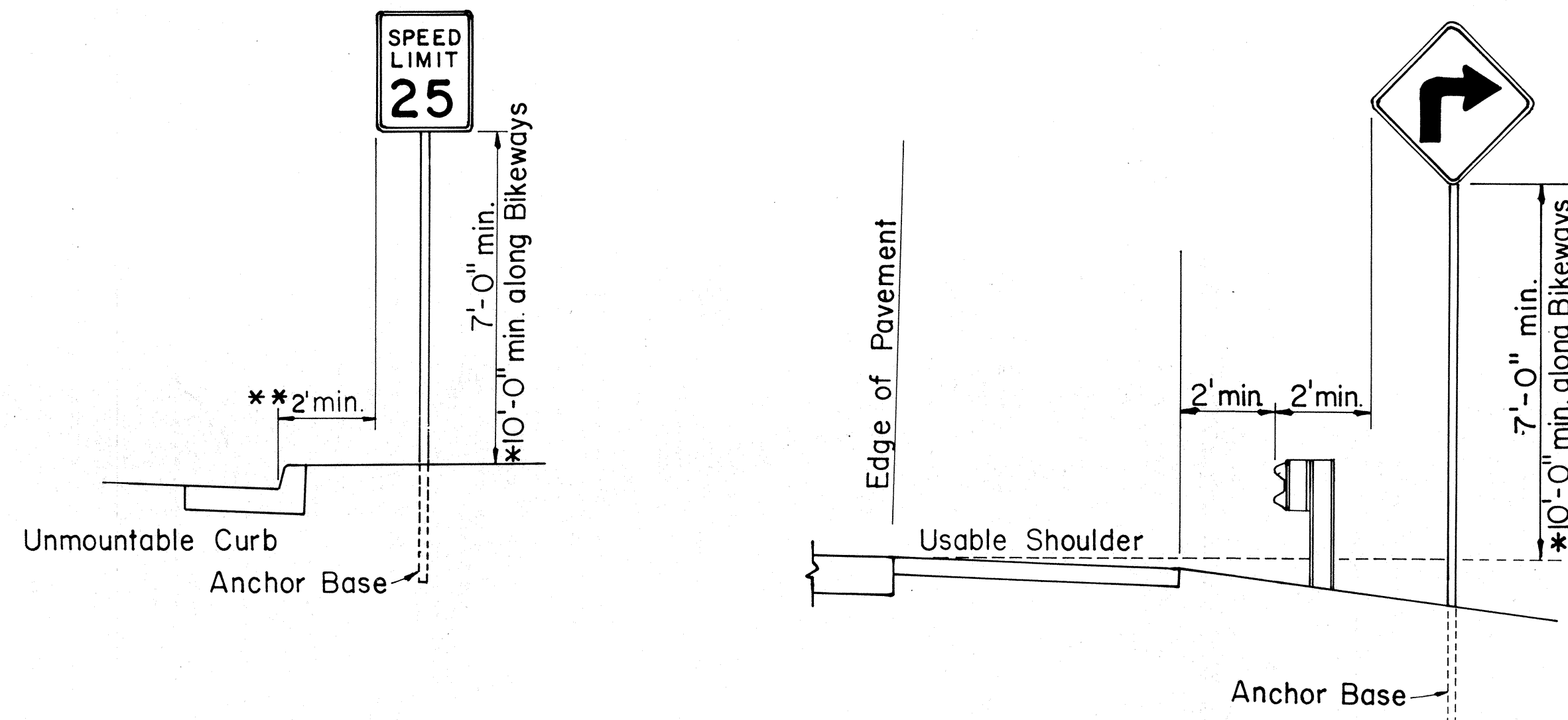
APPROVAL RECOMMENDED:
Erich Tanaka 10/14/83
 TRAFFIC ENGINEER DATE

APPROVED:
H. Fujiyama 10-18-83
 ASSISTANT CHIEF, ENGINEERING DATE

STATE OF HAWAII
 DEPARTMENT OF TRANSPORTATION
 HIGHWAYS DIVISION

STANDARD DETAILS
 MISCELLANEOUS SIGN DETAILS

Not to Scale: Oct. 1983
 SHEET NO. OF SHEETS DT 100



HEIGHT AND LATERAL LOCATION OF SIGNS TYPICAL INSTALLATION

ORIGINAL PLAN	DATE
SURVEY PLATTED BY	
DRAWN BY	
DESIGNED BY	
QUANTITIES BY	
CHECKED BY	

FED. ROAD DIST. NO.	STATE	FED. AID PROJ. NO.	FISCAL YEAR	SHEET NO.	TOTAL SHEETS
HAWAII	HAW.	78A-01-86M	1986	12	16



CW20-1a 48" x 48"



CW20-2d 48" x 48"



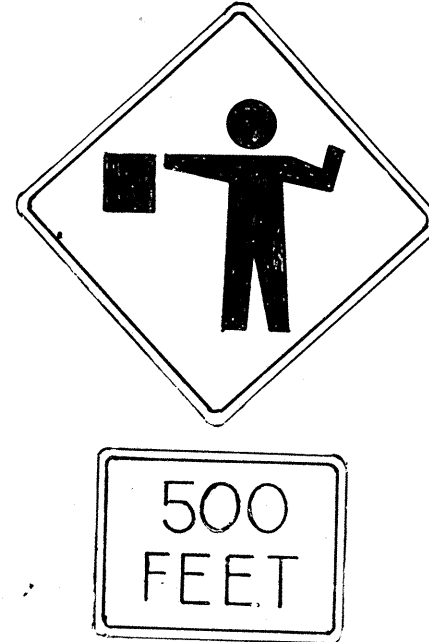
CW20-3b 48" x 48"



CW20-4d 48" x 48"



CW20-5d(L) 48" x 48"



CW20-7c 36" x 36"
24" x 18"
CW20-7c-A 48" x 48"
24" x 18"



CW21-1 30" x 30"



CW21-2 30" x 30"



CW21-3 36" x 36"



CW21-4 36" x 36"



CW21-5 30" x 30"



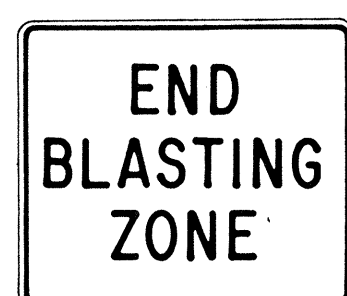
CW21-6 30" x 30"



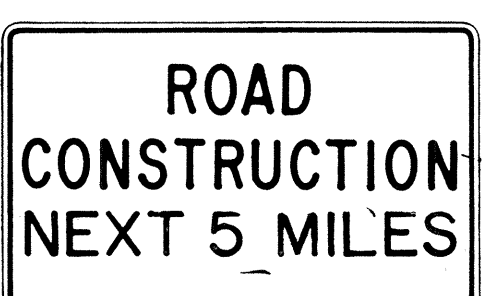
CW22-1b 48" x 48"



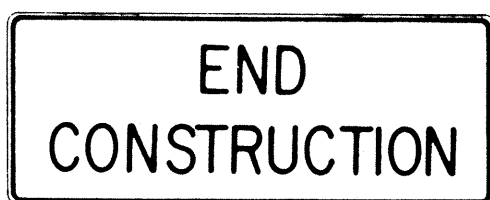
CW22-2 42" x 36"



CW22-3 42" x 36"



CG20-1(5) 60" x 36"



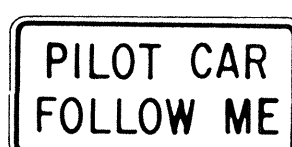
CG20-2 60" x 24"



CM4-9(R) 30" x 24"



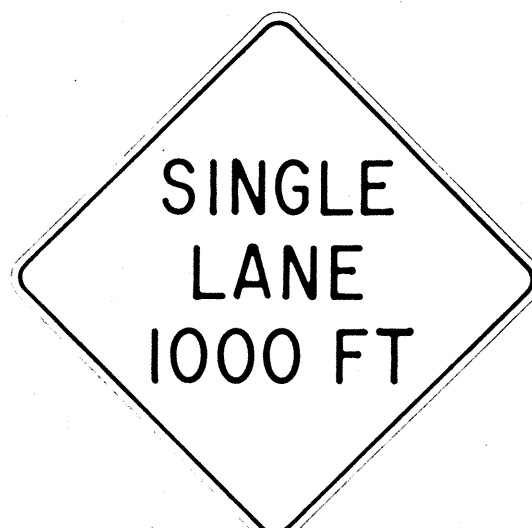
CM4-10(R) 48" x 18"



CG20-4 36" x 18"



CW23-1 36" x 36"



CW23-2b 48" x 48"



CW23-3(R) 48" x 48"

GENERAL NOTES

- Sign details shall conform to the latest editions of FHWA publications "Manual on Uniform Traffic Control Devices for Streets and Highways," "Standard Alphabets for Highway Signs," and "Standard Highway Signs," and as amended.
- All construction signs shall be reflectorized.
- All construction signs shall have 3/8" bolt holes drilled at appropriate locations.
- Numerals in () indicates numerals to be inserted for sign message. (R) or (L) indicates right or left.
- For "CW" series signs, suffixes a, b, c and d are as follows:
a-1500 FT, b-1000 FT,
c-500 FT and d-AHEAD.

NO.	REVISION	APPROVED BY	DATE
1	Supersedes Sht. DT 104 Approved 12-30-69	H.T.	3/23/72
2	Revised General Note 1	H.T.	10/16/74
3	Revised General Note 2	H.T.	9-16-75
4	Revised General Note 2 and sign CG20-1(5)	H.T.	9-14-76
5	Revised General Note 1 and sign CW20-7c	E.T.	9/18/85

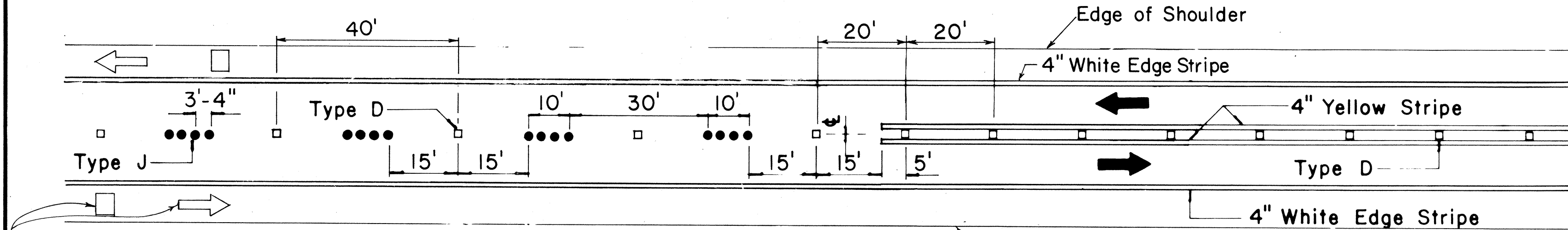
APPROVAL RECOMMENDED:
Erich Tanaka 3/21/72
TRAFFIC ENGINEER DATE

APPROVED:
Erich Tanaka 3/23/72
ASSISTANT CHIEF, ENGINEERING DATE

STATE OF HAWAII DEPARTMENT OF TRANSPORTATION HIGHWAYS DIVISION	
STANDARD DETAILS CONSTRUCTION SIGNS	
NOT TO SCALE	
SHEET No. 12 OF 16 SHEETS DT 104	

DESIGNED BY	DATE
CHECKED BY	
APPROVED BY	
NOTED BY	
NO.	

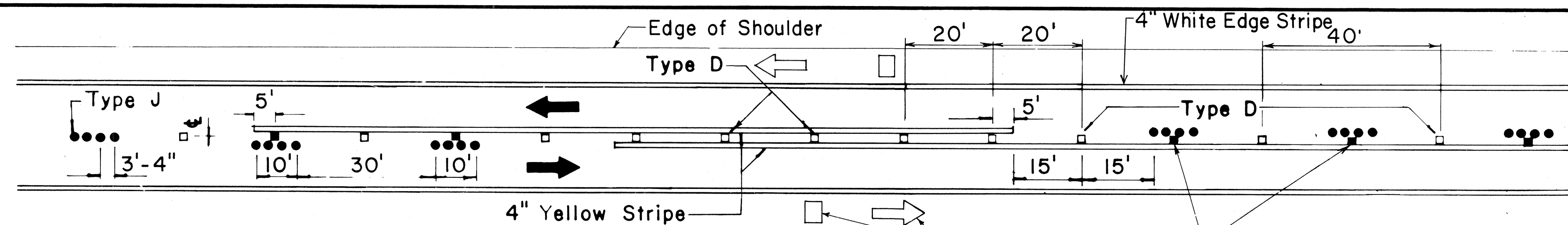
FED. ROAD DIST. NO.	STATE	FED. AID PROJ. NO.	FISCAL YEAR	SHEET NO.	TOTAL SHEETS
HAWAII	HAW.	DBA-01-86M	1986	13	16



Pavement Symbols, Words, Arrows, and Legends for Bike Route as Required on Plans.

PASSING PERMITTED AND PASSING PROHIBITED

TWO - LANE



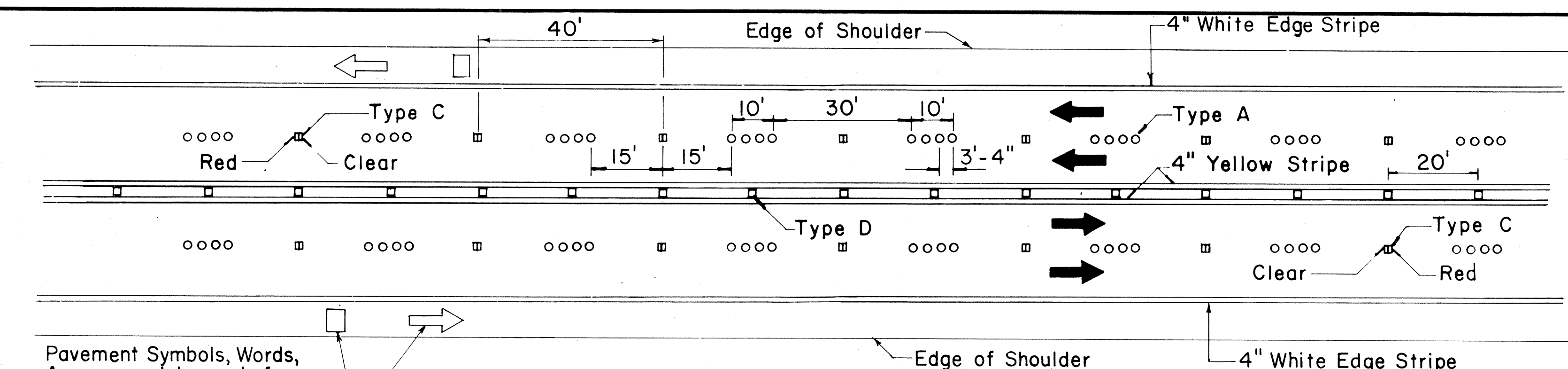
Pavement Symbols, Words, Arrows, and Legends for Bike Route as Required on Plans.

PASSING PROHIBITED ZONES

TYPE A
NON-REFLECTIVE WHITE MARKER

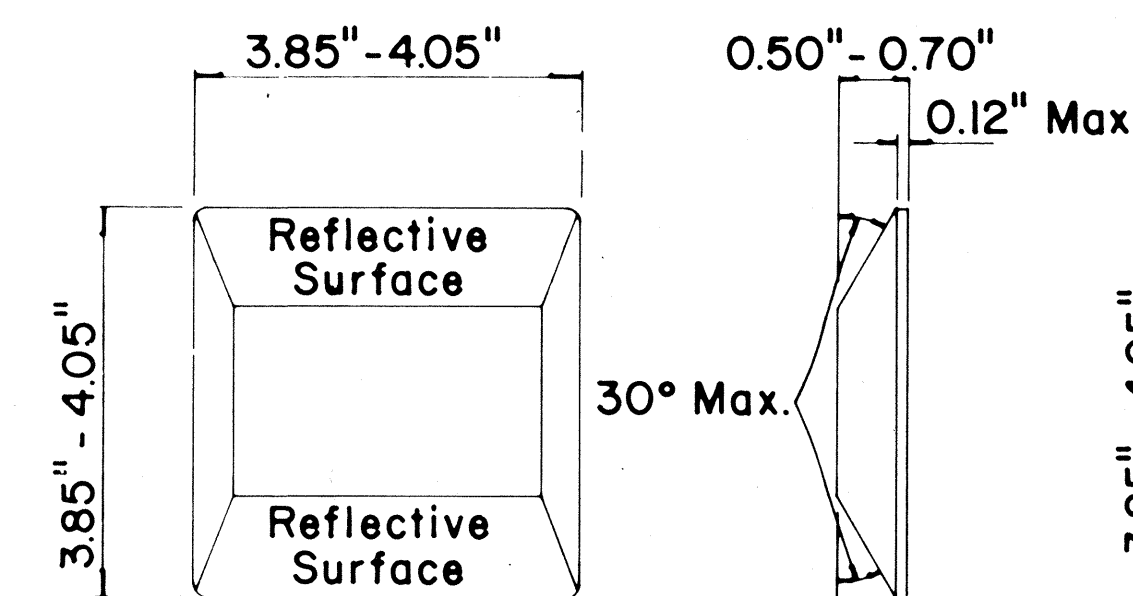
TYPE C
RED-CLEAR REFLECTIVE MARKER

TYPE J
NON-REFLECTIVE YELLOW MARKER

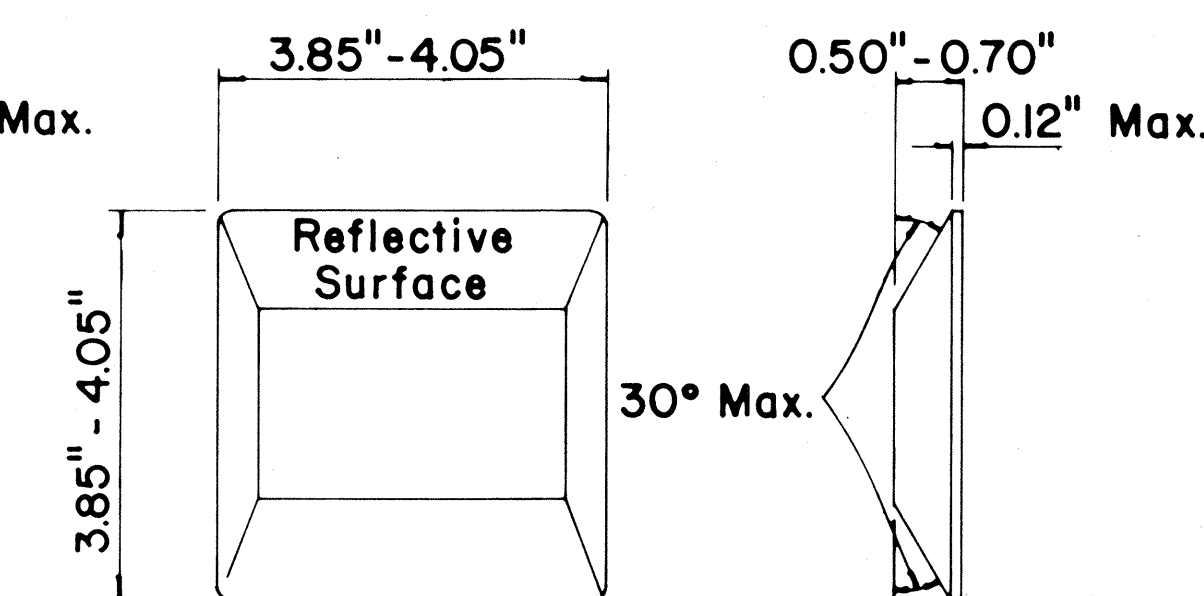


Pavement Symbols, Words, Arrows, and Legends for Bike Route as Required on Plans.

MULTI - LANE



TYPE D
TWO-WAY YELLOW REFLECTIVE MARKER



TYPE H
ONE-WAY YELLOW REFLECTIVE MARKER

GENERAL NOTES

- Pavement marking and striping shall conform to the latest "Manual on Uniform Traffic Control Devices for Streets and Highways," and as amended.
- Layout and installation of pavement marking and striping shall be done by the Contractor. The Contractor shall check the layouts with the Engineer prior to performing work.
- Edge lines shall not be continued through intersections and shall not be broken for driveways unless otherwise shown or directed.

LEGEND

- Type A
- Type C
- Type D
- Type H
- Type J

APPROVAL RECOMMENDED:

Erich Tanaka 1/21/78
TRAFFIC ENGINEER DATE

APPROVED:

Herbert J. DeKiehn 1/24/78
ASSISTANT CHIEF, ENGINEERING DATE

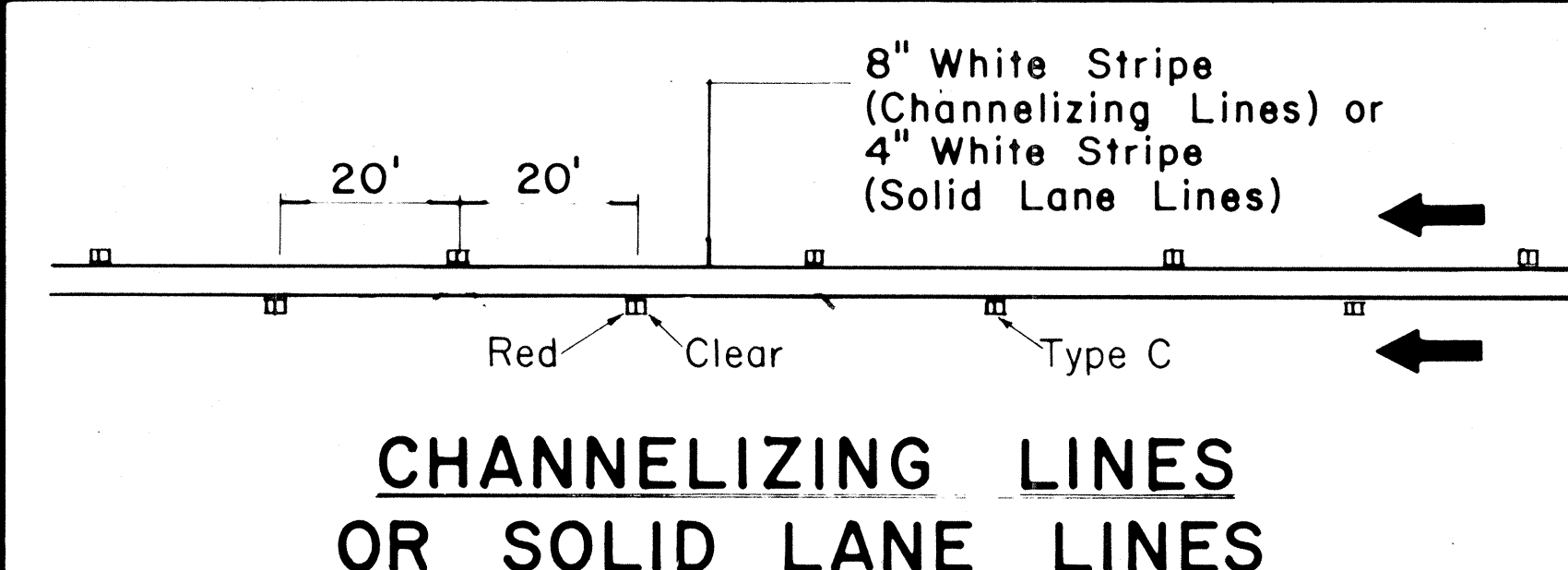
No.	REVISION	APPROVED BY	DATE
1	Supersedes DT 300 approved 11/18/71.	H.T.	1/24/78
2	Delete Type A Markers from Bike Route Delineation.	H.T.	10/15/79
3	Added General Note 3. Revised left edge stripe.	H.T.	9-28-83
4	Revised Channelizing Lines or Solid Lane Lines.	H.T.	3/2/85

STATE OF HAWAII
DEPARTMENT OF TRANSPORTATION
HIGHWAYS DIVISION

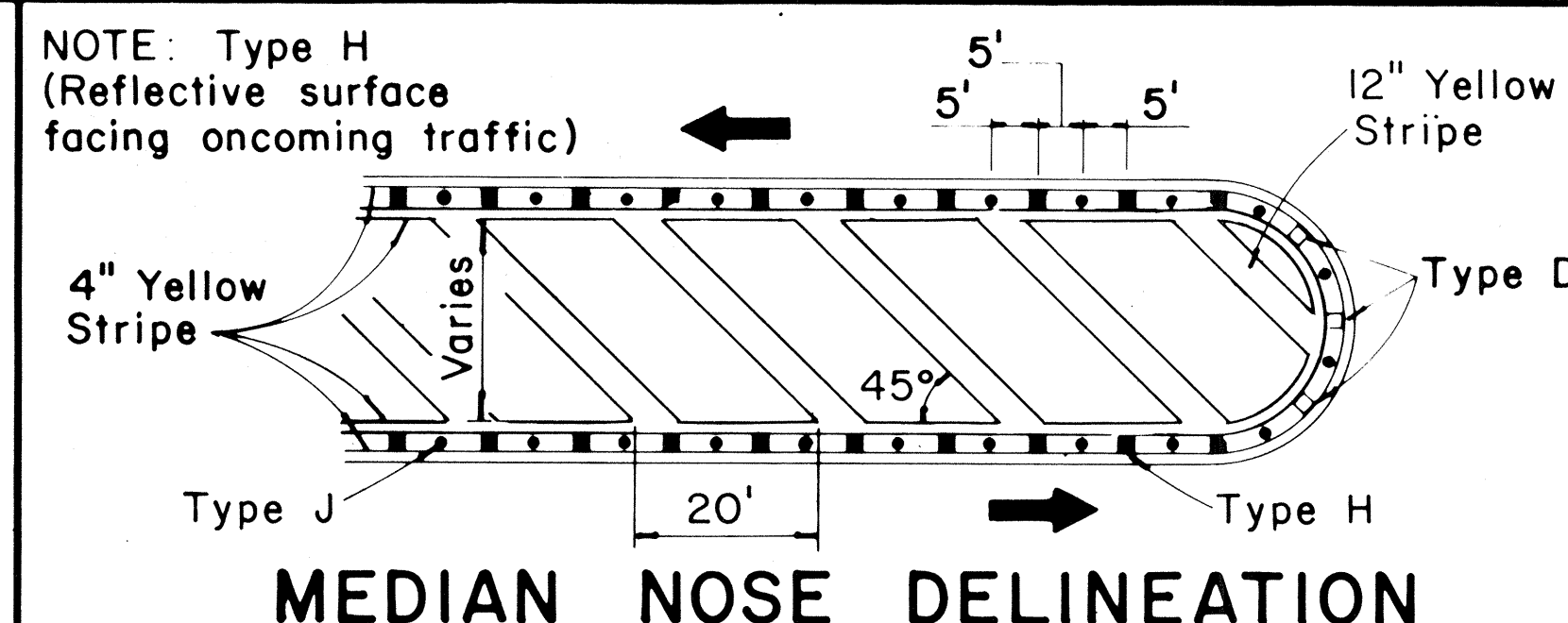
STANDARD DETAILS RAISED PAVEMENT MARKERS AND STRIPING

Not to Scale July 1978

SHEET No. OF SHEETS DT 300



CHANNELIZING LINES OR SOLID LANE LINES



MEDIAN NOSE DELINEATION

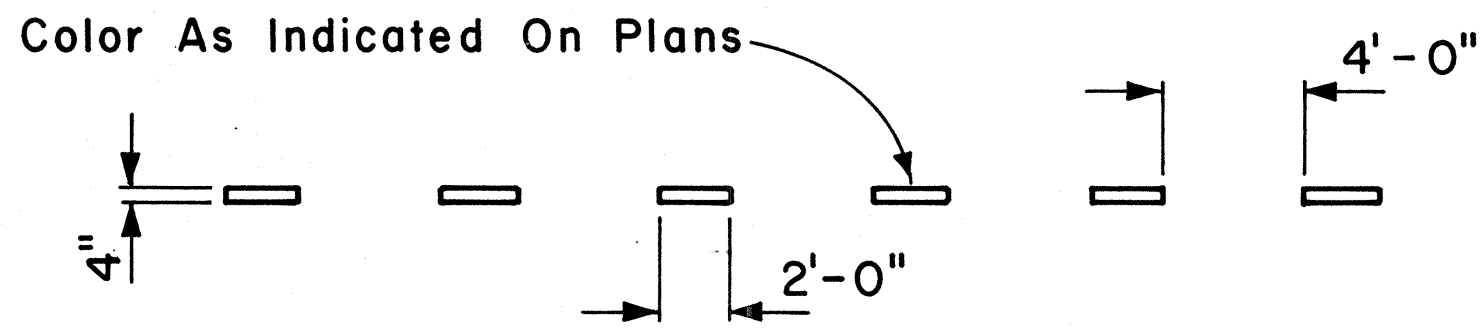
DIVIDED HIGHWAY
AND
FREEWAY

MISCELLANEOUS

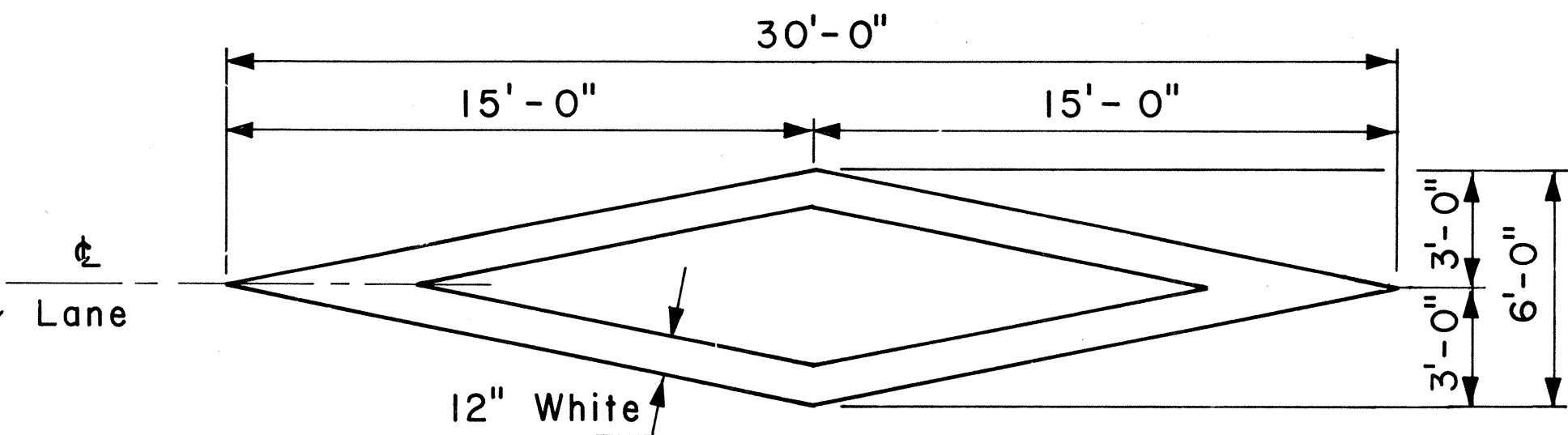
FED. ROAD DIST. NO.	STATE	FED. AID PROJ. NO.	FISCAL YEAR	SHEET NO.	TOTAL SHEETS
HAWAII	HAW.	98A-01-68M	1986	14	16

GENERAL NOTES:

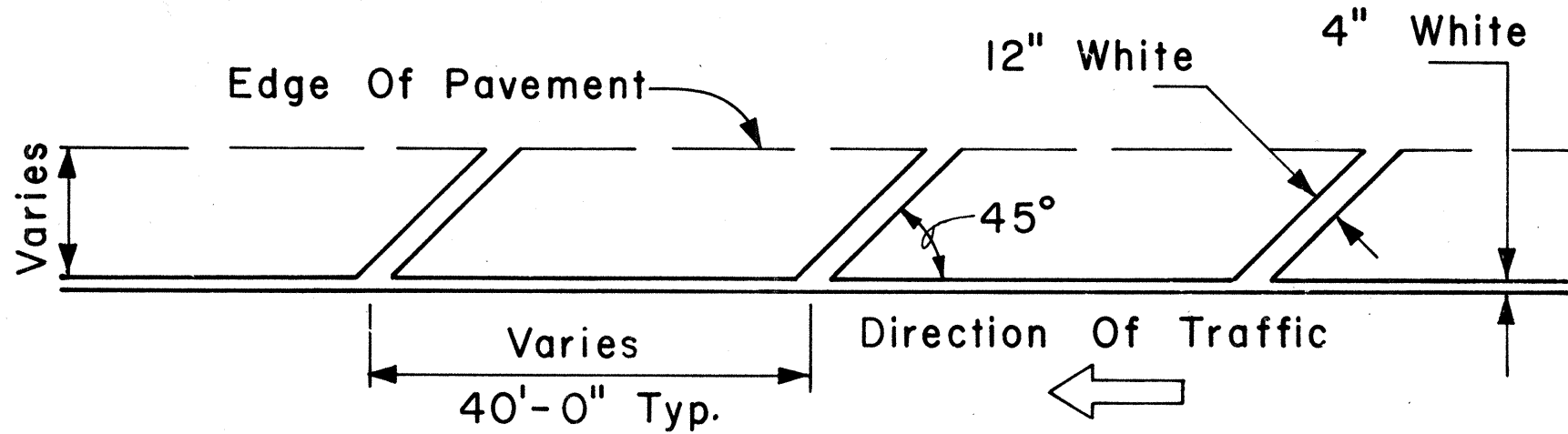
1. Pavement marking and striping shall conform to the latest edition of the "Manual on Uniform Traffic Control Devices for Streets and Highways," by the FHWA, and as amended.
2. Layout of pavement markings and striping shall be done by the Contractor. The Contractor shall check layout of markings and striping with the Engineer prior to performing work.
3. For additional pavement marking details, see sheet DT 300.



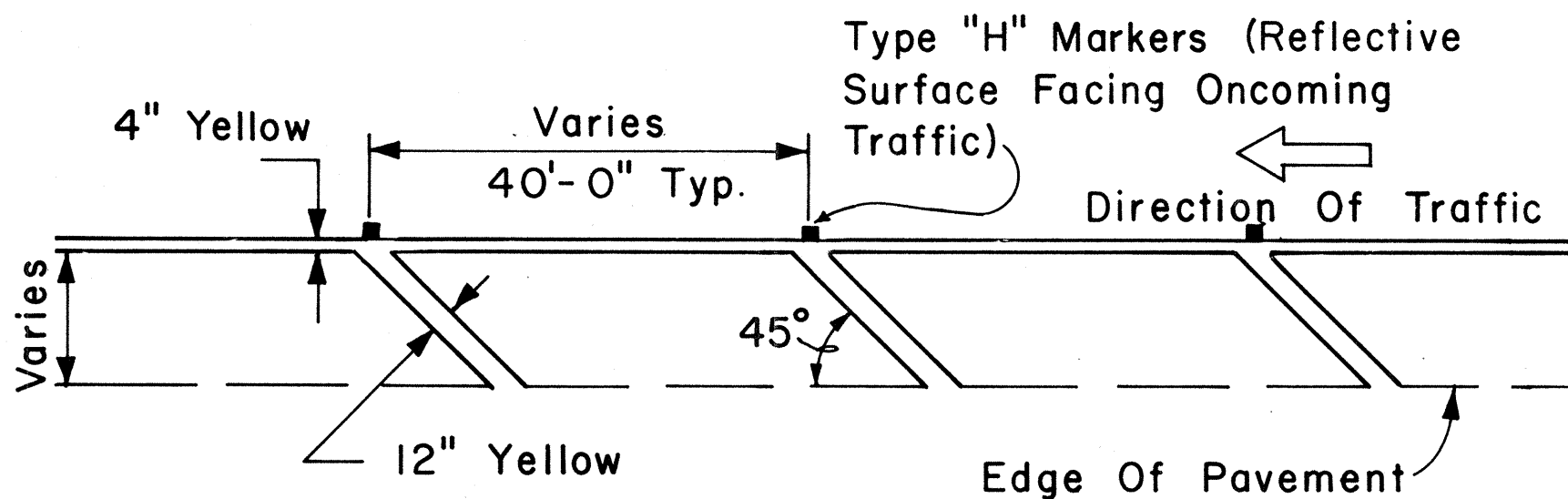
4" GUIDE LINE



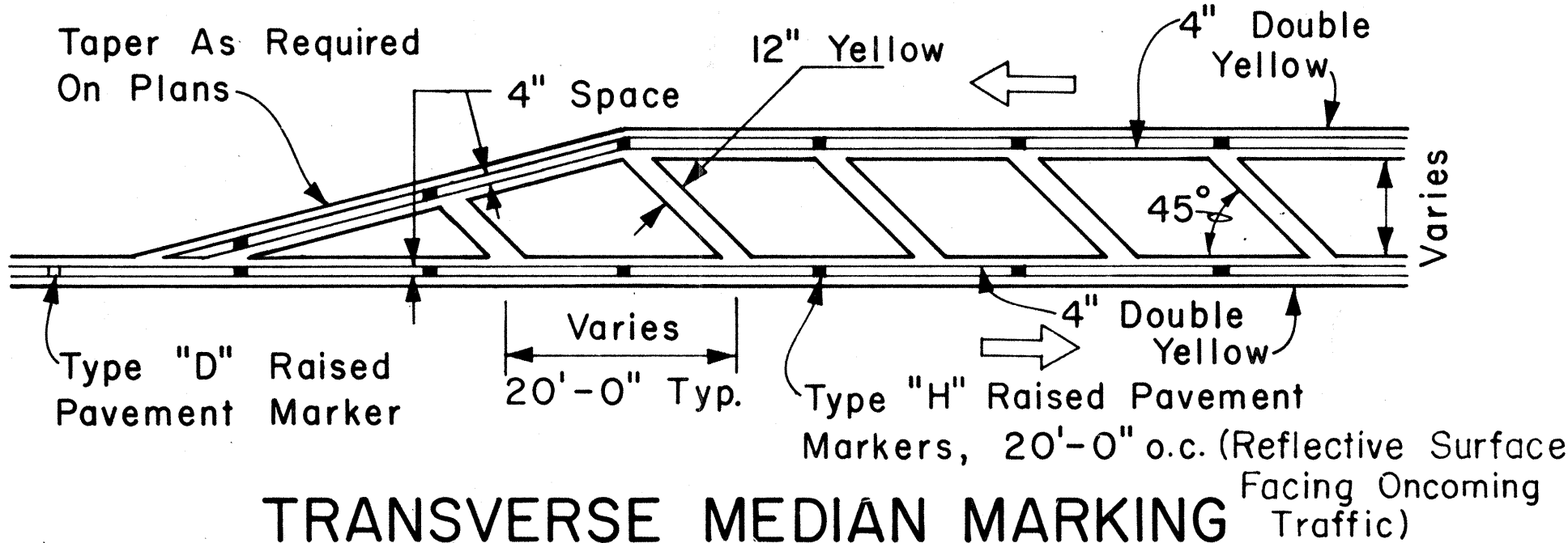
PAVEMENT DIAMOND



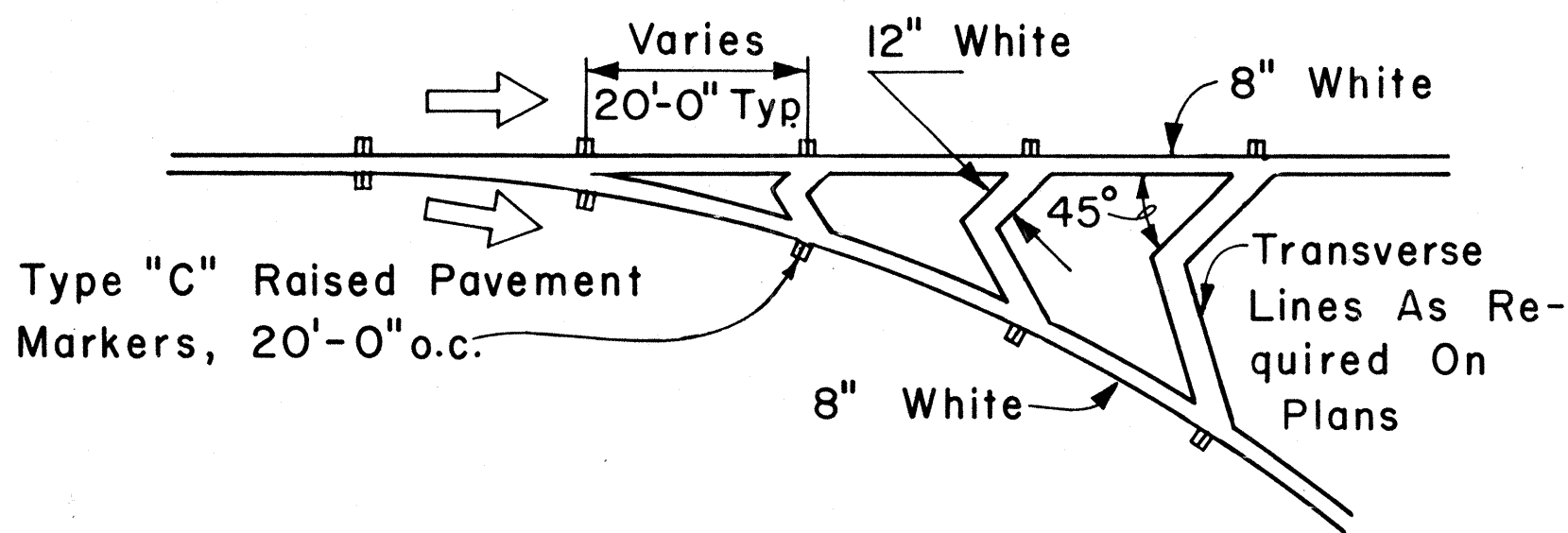
TRANSVERSE RIGHT SHOULDER MARKING



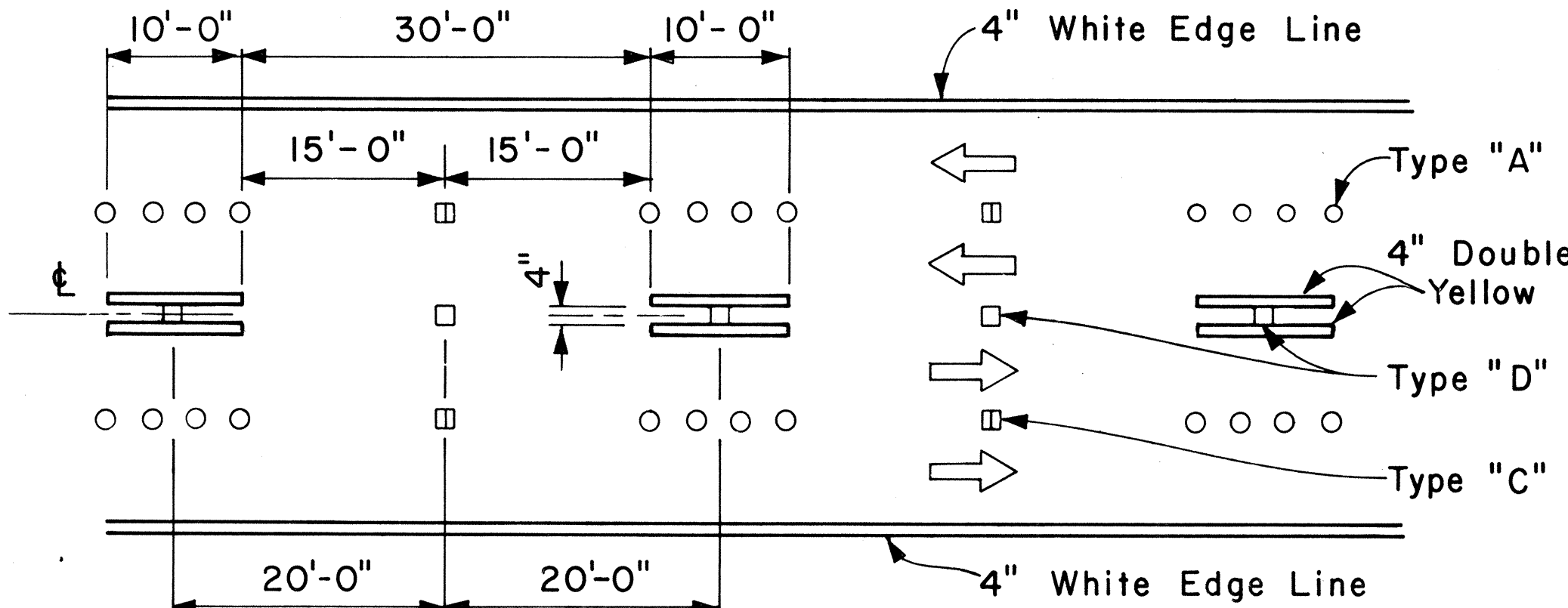
TRANSVERSE LEFT SHOULDER MARKING



TRANSVERSE MEDIAN MARKING

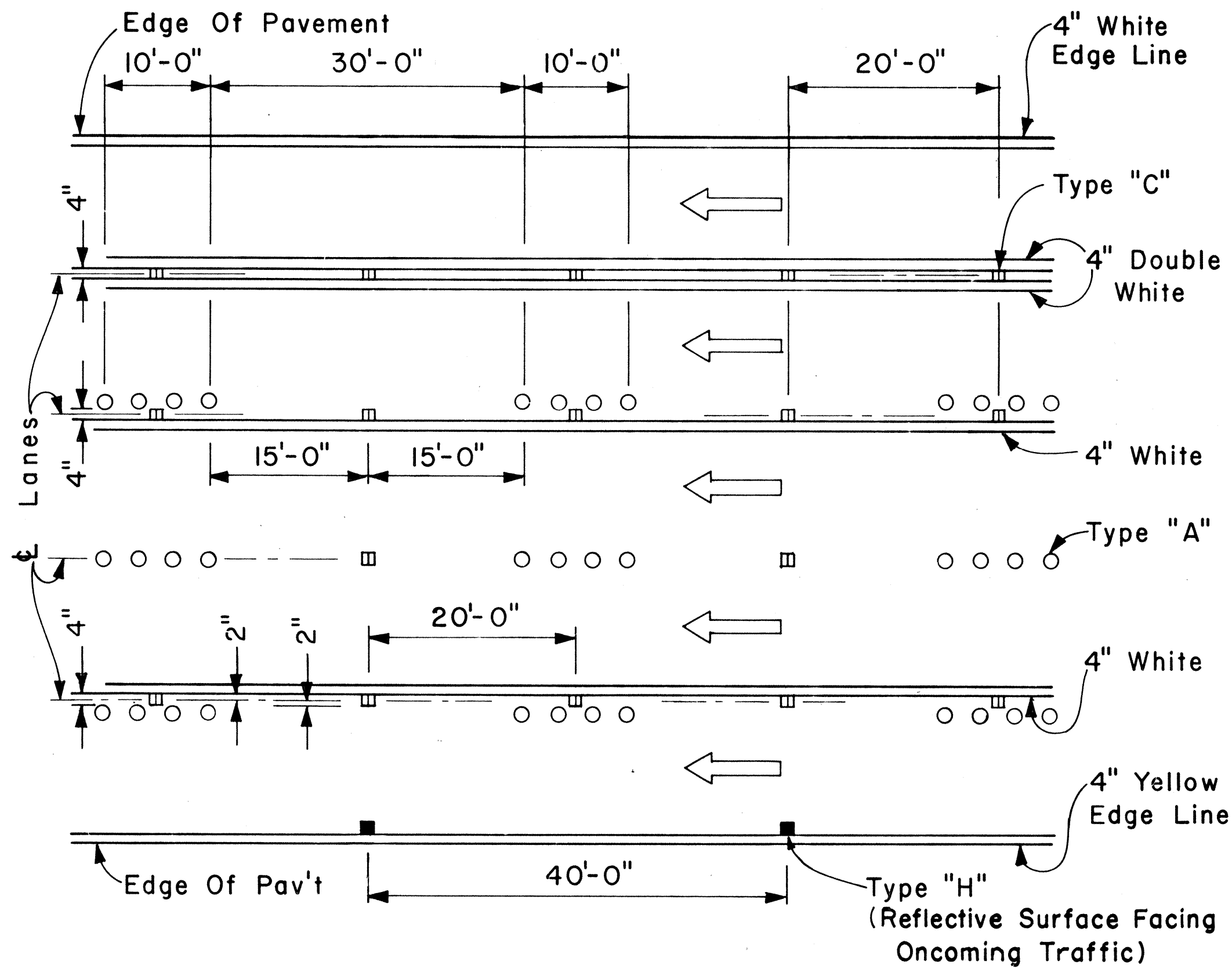


CHANNELIZING ISLAND



NOTE: Traffic Cone Usage Required.

MULTI-LANE REVERSIBLE LANES



MULTI-LANE LANE CHANGE RESTRICTION ZONES

APPROVAL RECOMMENDED: E. T. Tanaka 5/2/78
TRAFFIC ENGINEER DATE

APPROVED: Robert J. Zafra 5/2/78
ASSISTANT CHIEF, ENGINEERING DATE

NO.	REVISION	APPROVED BY	DATE
1	Revised Transverse left Shoulder Marking, Channelizing Island & Lane Change Restriction Zones.	E. T.	7/12/85

STATE OF HAWAII
DEPARTMENT OF TRANSPORTATION
HIGHWAYS DIVISION
STANDARD DETAILS
MISCELLANEOUS
PAVEMENT MARKINGS

Scale: Not to Scale Date: April, 1978

SHEET NO. OF SHEETS DT 302

