

INDEX TO DRAWINGS	
SHEET NO.	DESCRIPTION
1	Title Sheet
2	Plan and Profile
3-4	Detail Plan
5-6	Structural Details

TERRITORY OF HAWAII  
TERRITORIAL HIGHWAY DEPARTMENT  
HONOLULU, OAHU, T. H.

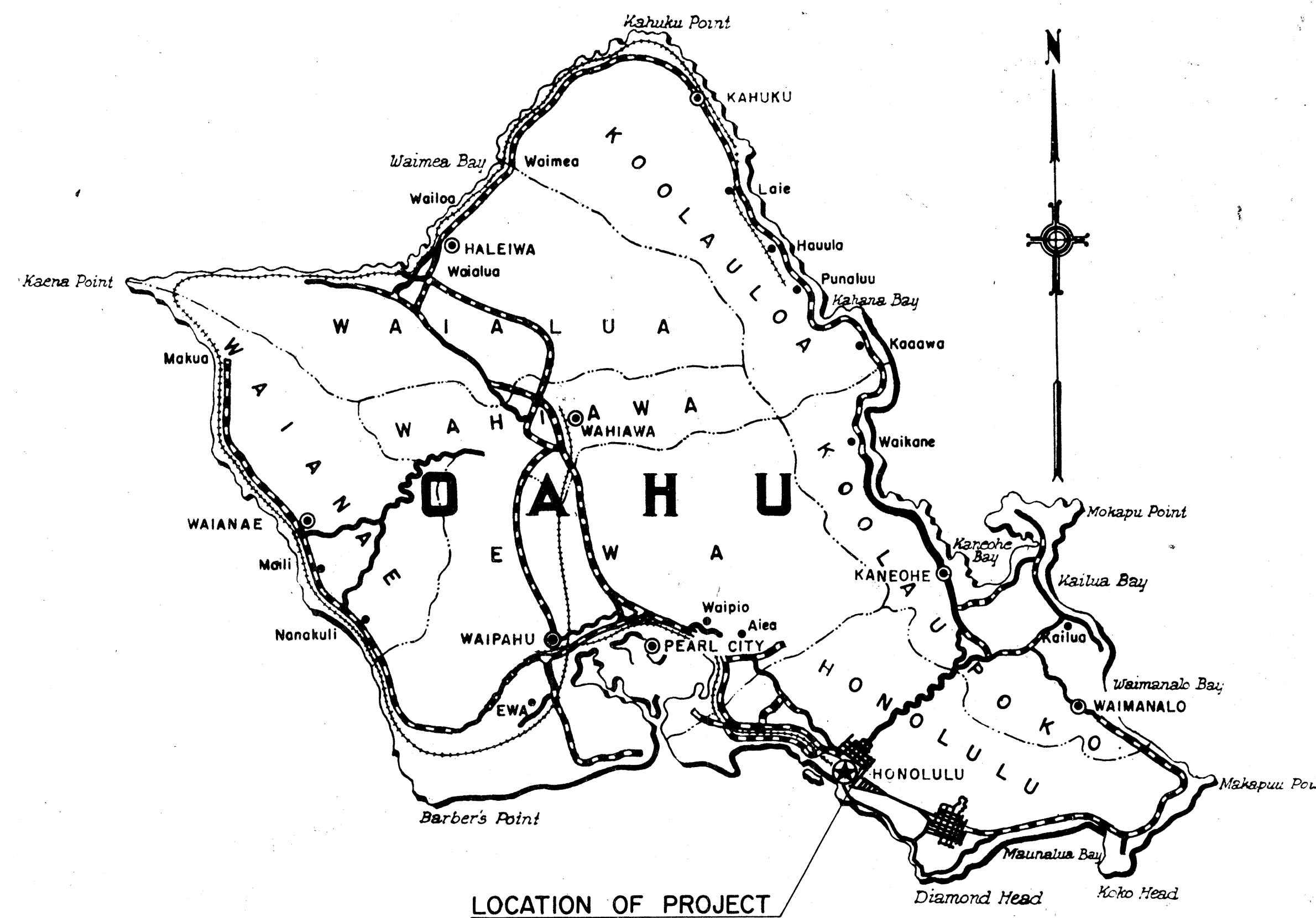
**AS-BUILT  
PLANS OF  
CONCRETE BOX CULVERT EXTENSION  
VINEYARD THOROUGHFARE**

PALAMA STREET TO NUANU AVENUE  
FEDERAL AID PROJECT NO. BF-098-1(2)  
UNIT I  
DISTRICT OF HONOLULU  
ISLAND OF OAHU

**SCALES**

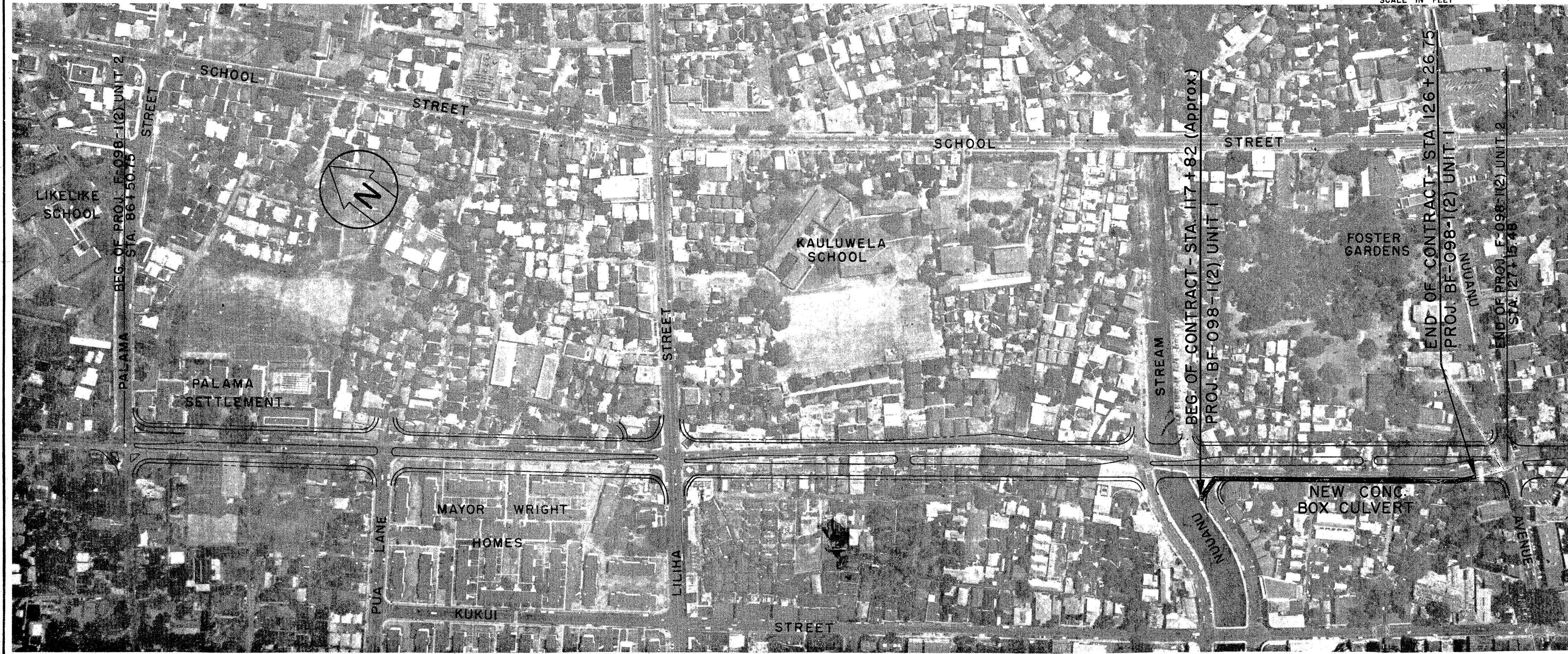
PLAN-PROFILE.....HOR.....1" = 50'  
VER.....1" = 5'  
DETAIL PLAN.....1" = 20'

FED. ROAD DIST. NO.	STATE	FED. AID PROJ. NO.	FUNCL. YEAR	SHEET NO.	TOTAL SHEETS
Hawaii	HAW.	BF-098-1(2) UNIT I	1957	1	6



NET LENGTH OF ROADWAY.....0.752 mile  
BRIDGES OVER 20'-0" SPAN.....0.018 mile  
GROSS LENGTH OF PROJECT.....0.770 mile

**LAYOUT PLAN**



Federal Aid Projects Previously Constructed Or Under Construction

NOTE: ALL CHANGES MADE DURING CONSTRUCTION  
HAVE BEEN NOTED IN RED ON THESE  
TRACINGS AND CHECKED BY:

*Chas. L. Schuster*  
DISTRICT ENGINEER  
12/13/59  
DATE

APPROVED: DATE June 13, 1957

*Yoshi Kunita*  
CHIEF ENGINEER, DEPT. OF PUBLIC WORKS  
CITY AND COUNTY OF HONOLULU

AUSTIN & TOWILL  
CIVIL ENGINEERS  
HONOLULU, HAWAII

*Paul R. Austin*  
H.A.R. AUSTIN, Reg. Eng. Cert. No. 92

R.M. TOWILL, Reg. Eng. Cert. No. 151  
DATE: APRIL 10, 1957

APPROVED: DATE May 1, 1957

*Wm. H. ...*  
TERRITORIAL HIGHWAY ENGINEER

DEPARTMENT OF COMMERCE  
BUREAU OF PUBLIC ROADS

APPROVED:  
DIVISION ENGINEER DATE

DATE	DESIGNED BY	TRACED BY	QUANTITIES BY	CHECKED BY

ORIGINAL PLAN No. \_\_\_\_\_

**5902.01**