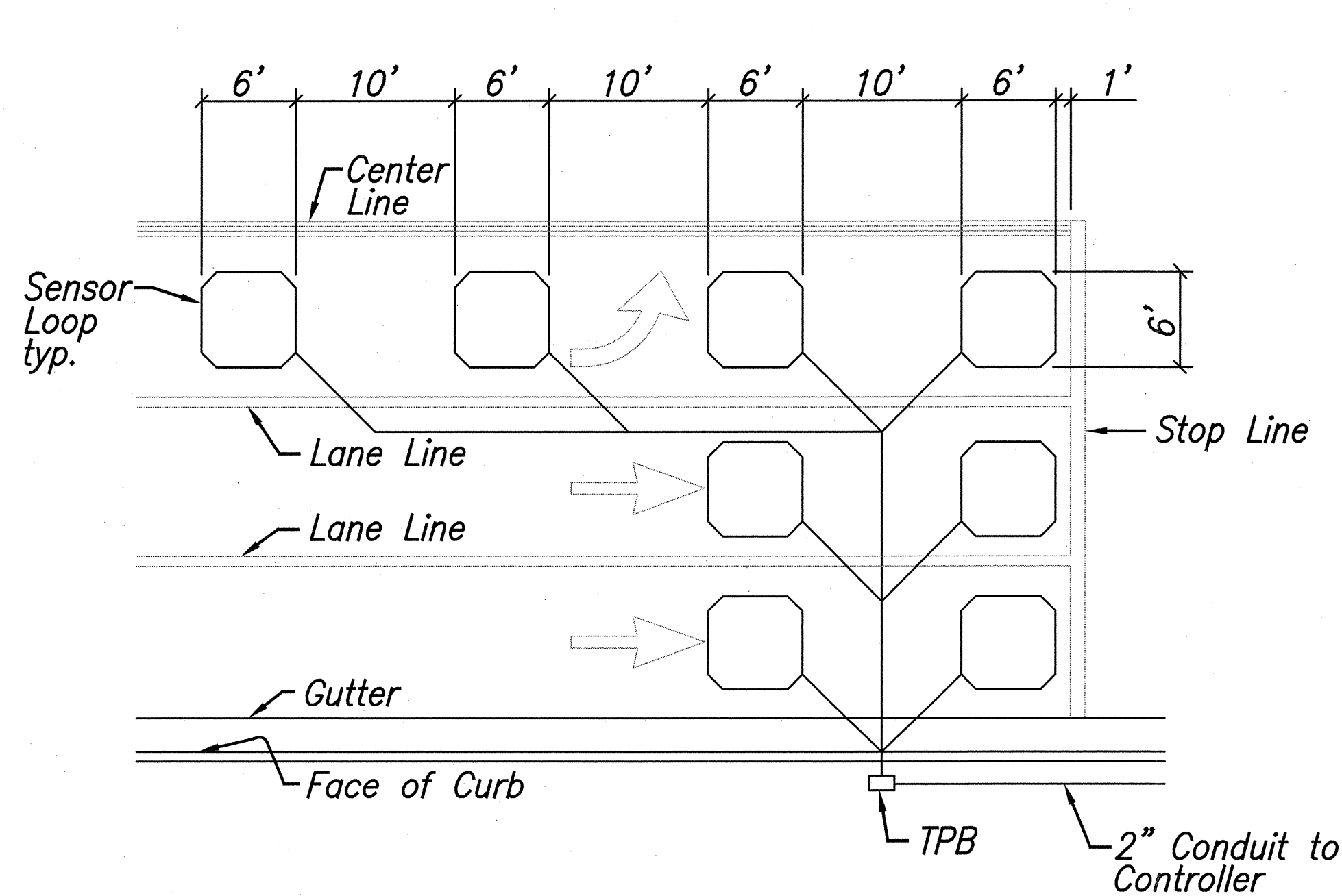
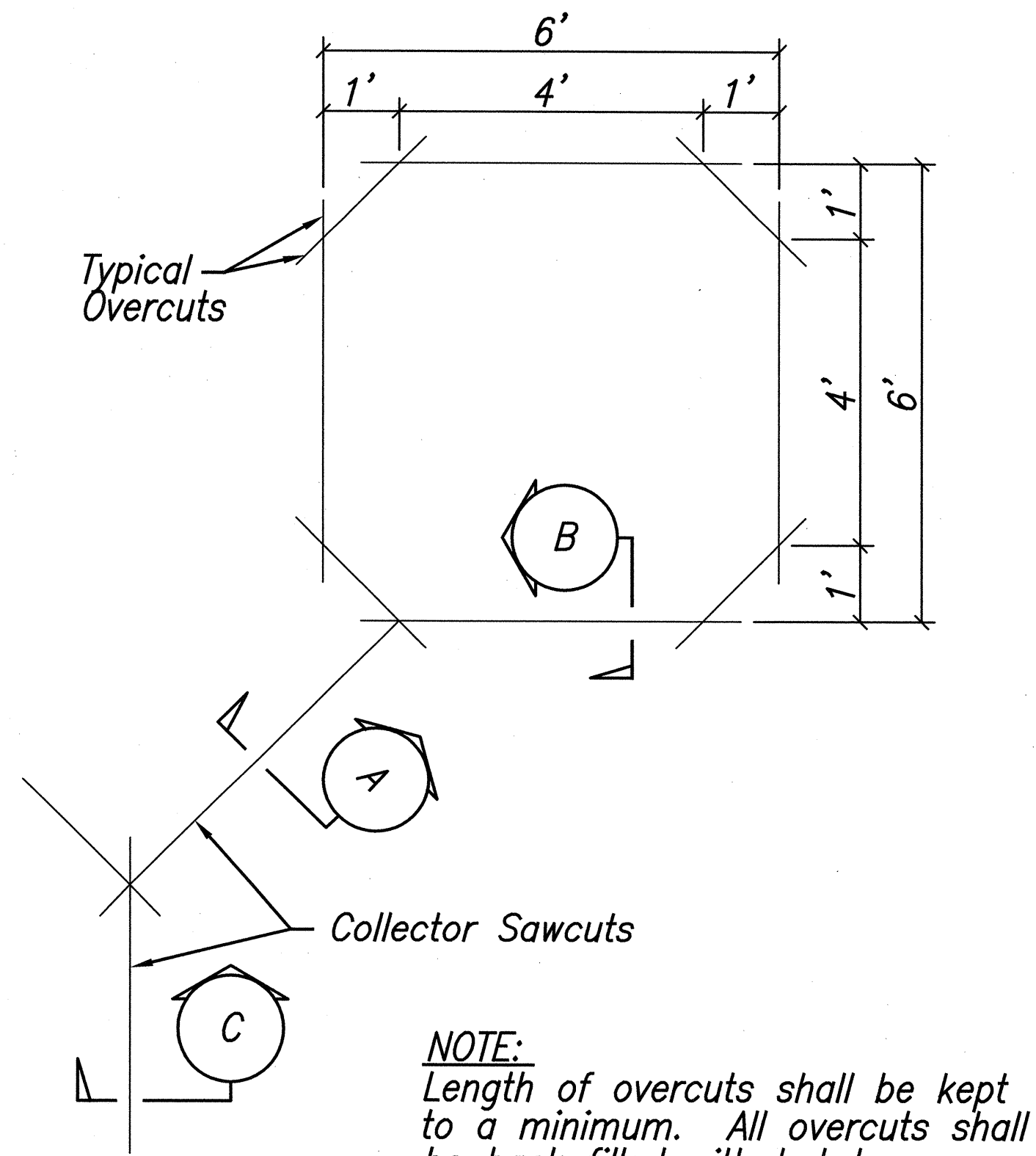


FED. ROAD DIST. NO.	STATE	PROJ. NO.	FISCAL YEAR	SHEET NO.	TOTAL SHEETS
HAWAII	HAW.	93A-01-12	2016	29	29

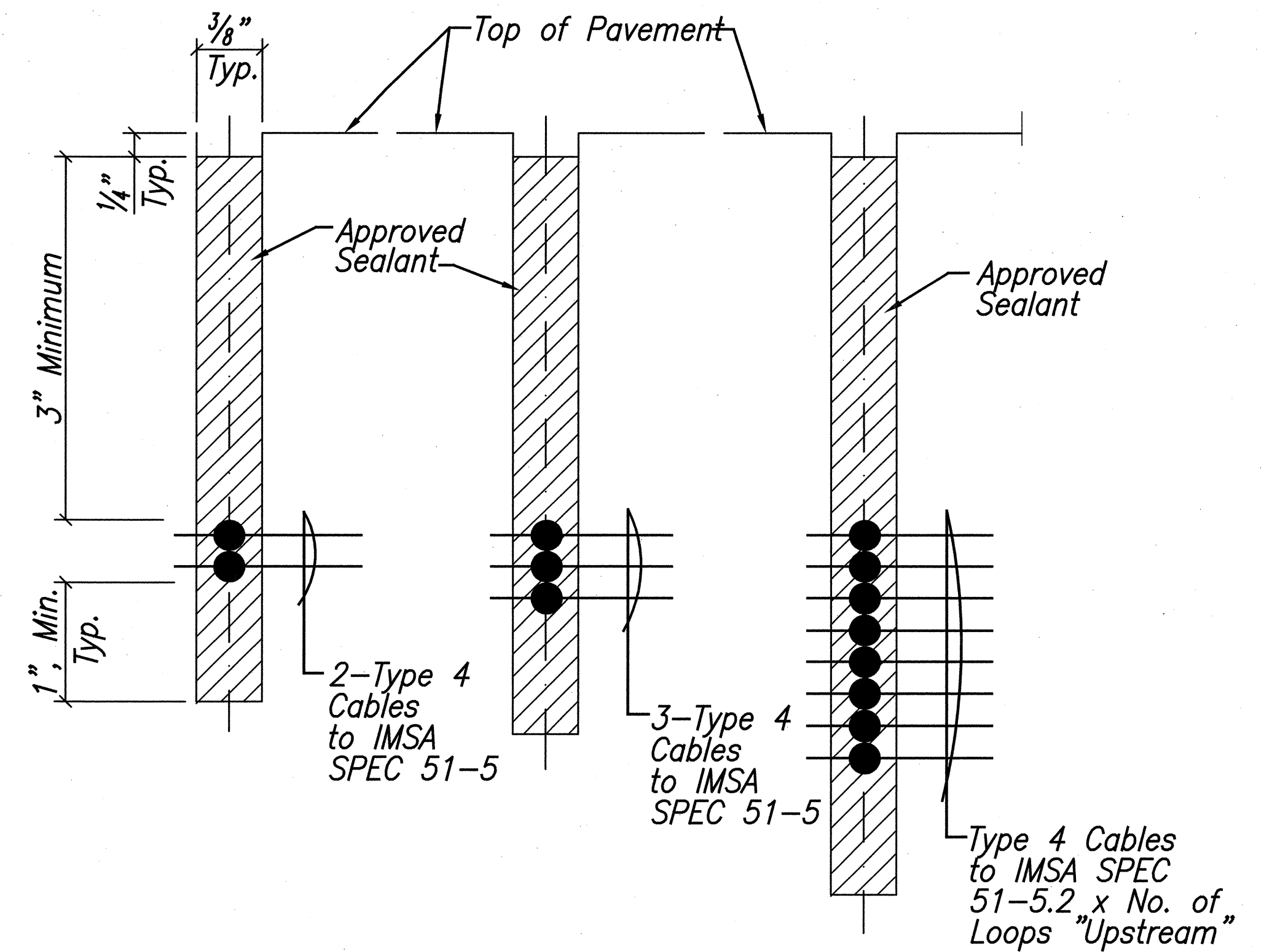


- NOTES:**
- Center sensor loops in lanes, unless otherwise noted on plans.
 - Collector cables shall be twisted 2 turns per foot.
 - Number of loops and locations vary. See project plans.
 - Number and locations of collector sawcuts may be varied in the field to suit.

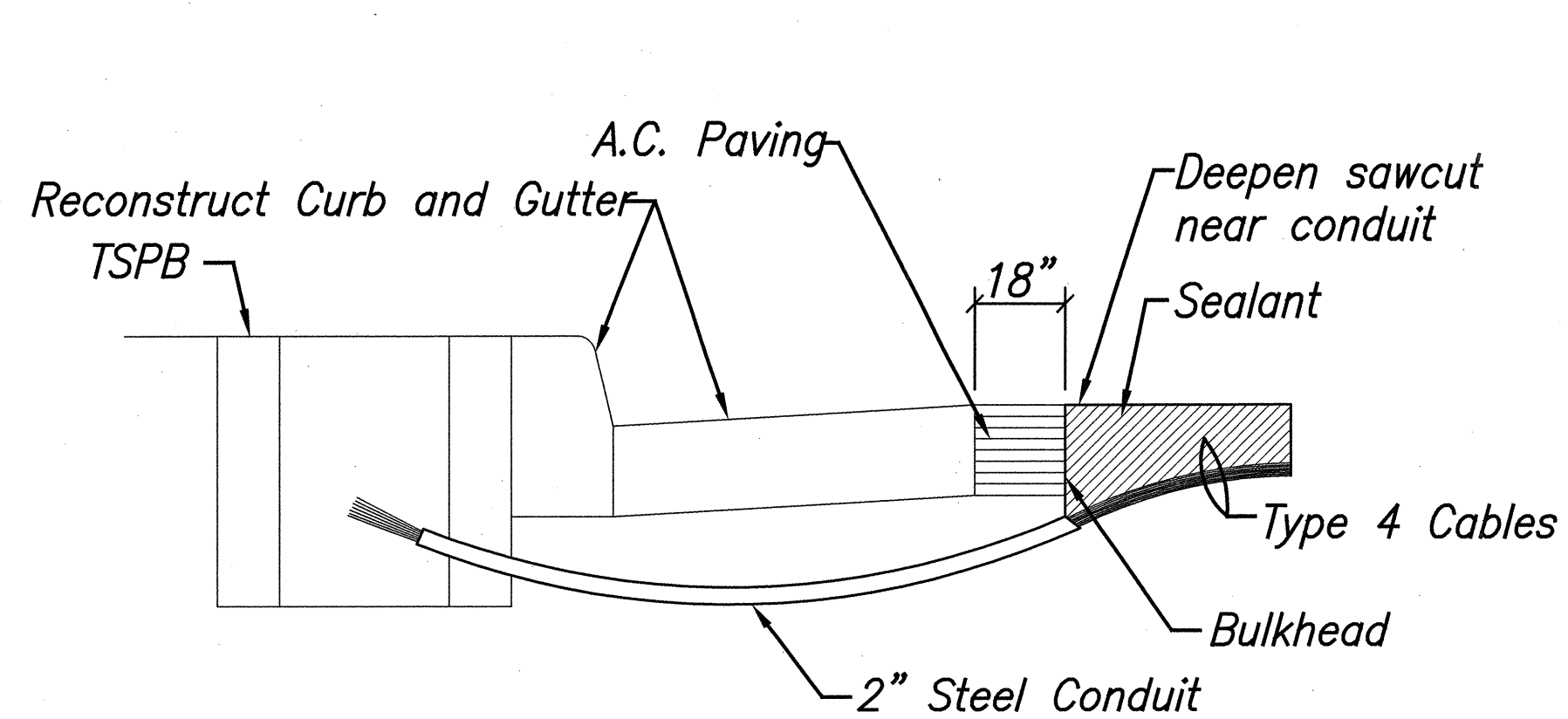
TYPICAL SENSOR LOOP LAYOUT



TYPICAL SENSOR LOOP SAWCUT DETAIL

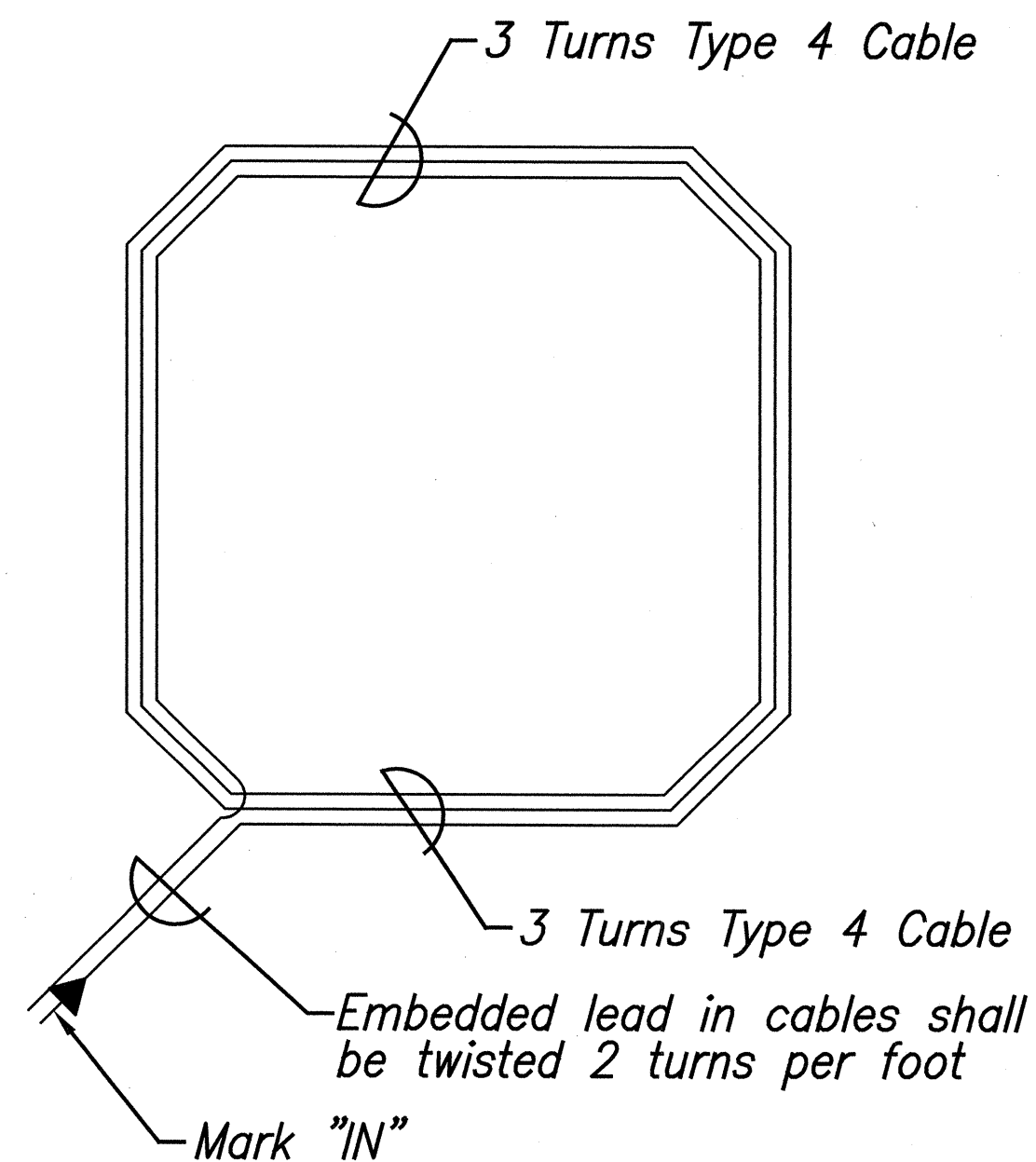


SECTION **A** SECTION **B** SECTION **C**

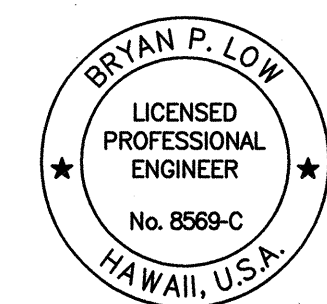


- NOTES ON CONSTRUCTION AT END OF SAWCUT**
- Seal roadway end of conduit after installation of conductors.
 - Install bulkhead across conduit trench.
 - Place hot tar in sawcut.
 - Backfill over conduit with new A.C.
 - Reconstruct curb and gutter as required.

DETAIL OF SENSOR LOOP INSTALLATION AT EDGE OF ROADWAY



TYPICAL SENSOR LOOP WIRING DIAGRAM



THIS WORK WAS PREPARED BY ME
OR UNDER MY SUPERVISION

[Signature]
SIGNATURE

4/30/16
EXPIRATION
DATE OF THE
LICENSE

STATE OF HAWAII
DEPARTMENT OF TRANSPORTATION
HIGHWAYS DIVISION

TRAFFIC SIGNAL PLANS

FARRINGTON HIGHWAY DRAINAGE IMPROVEMENTS
Vicinity of Princess Kahanu Avenue
Project No. 93A-01-12

Scale: As Shown Date: Oct. 2015

SHEET No. 3 OF 3 SHEETS

SURVEY PLOTTED BY	DATE
DRAWN BY	
DESIGNED BY	
QUANTITIES BY	
CHECKED BY	
ORIGINAL PLAN	
NOTE BOOK	
No.	