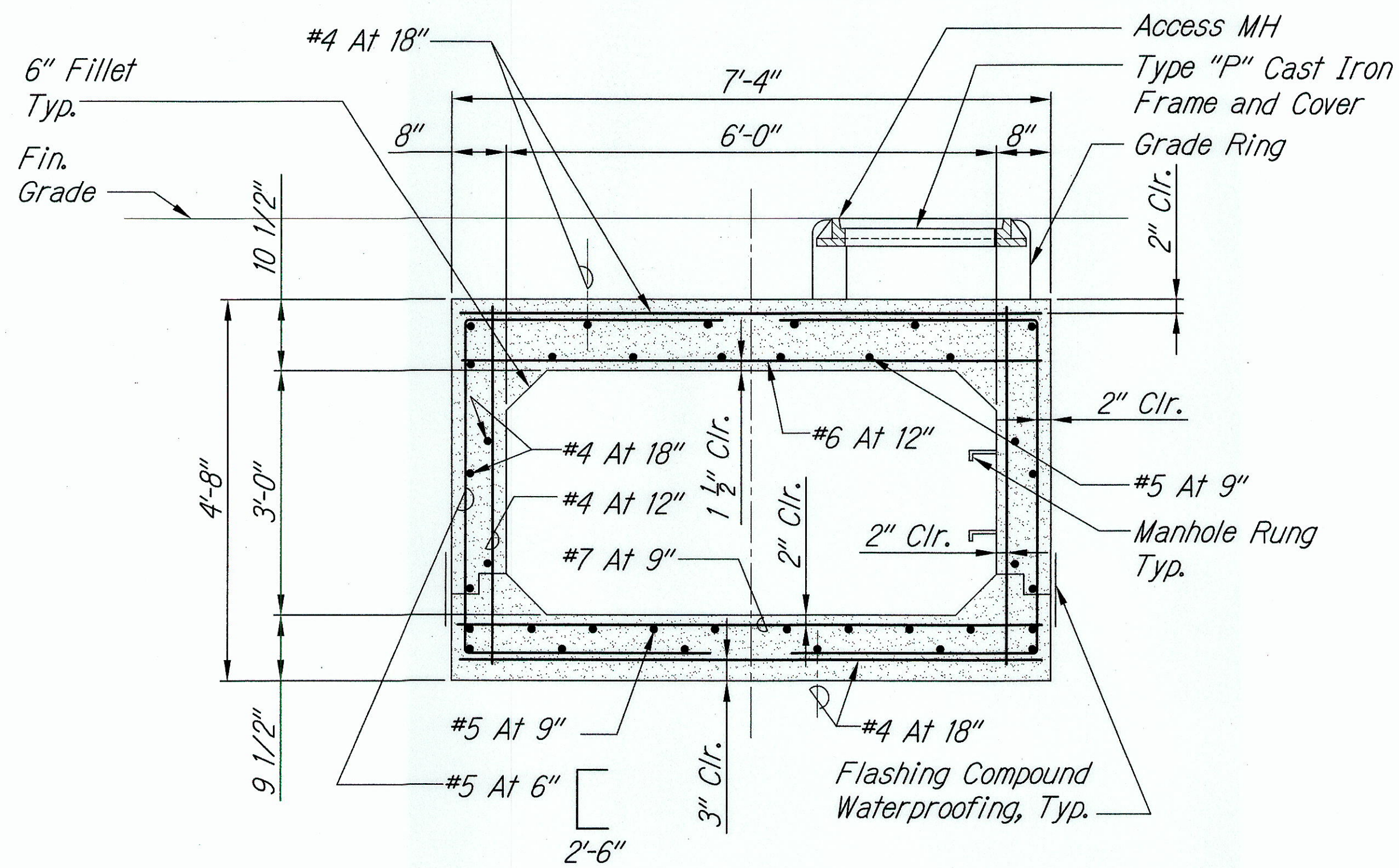
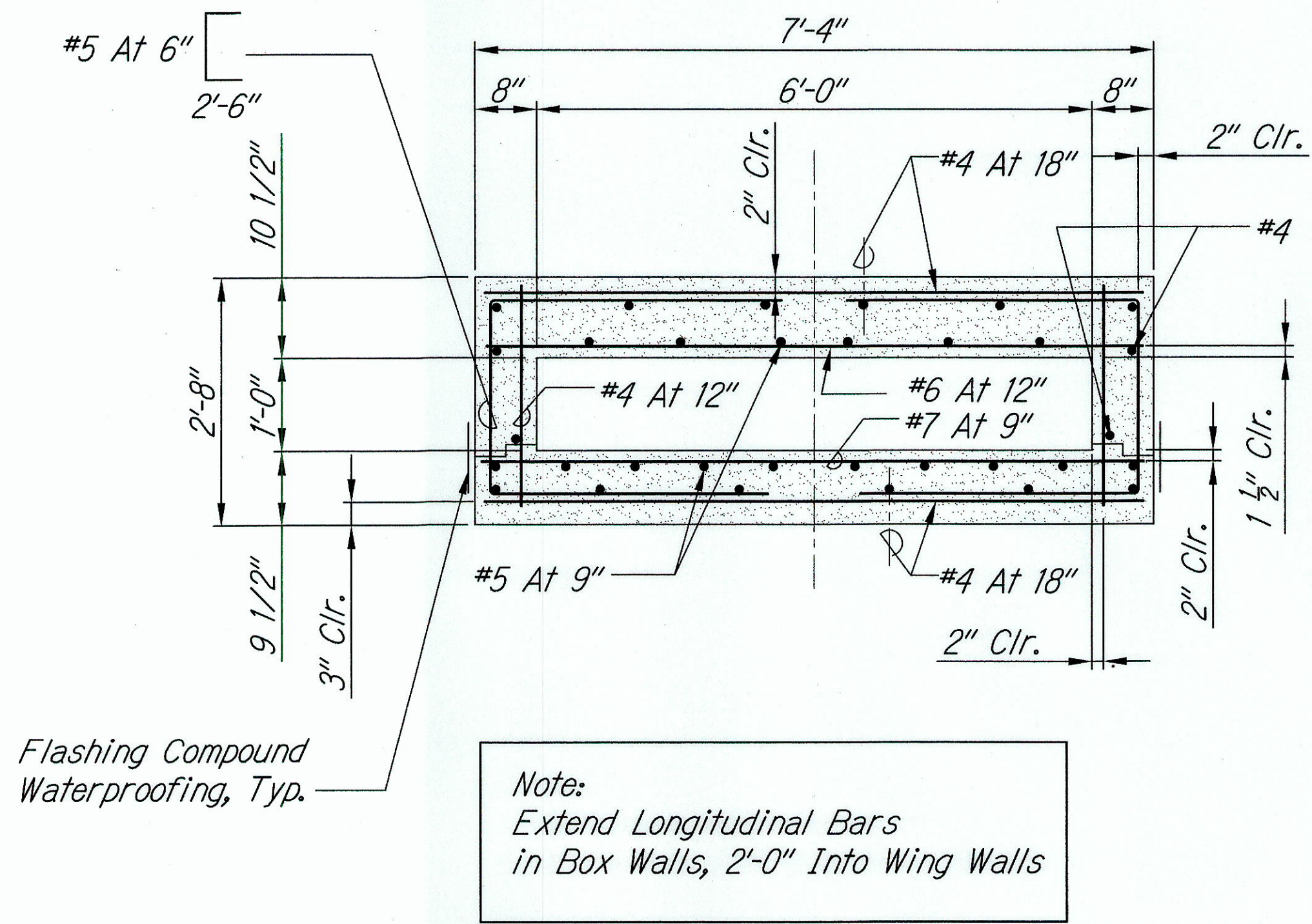


FED. ROAD DIST. NO.	STATE	FED. AID PROJ. NO.	FISCAL YEAR	SHEET NO.	TOTAL SHEETS
HAWAII	HAW.	93B-01-11	2012	37	38



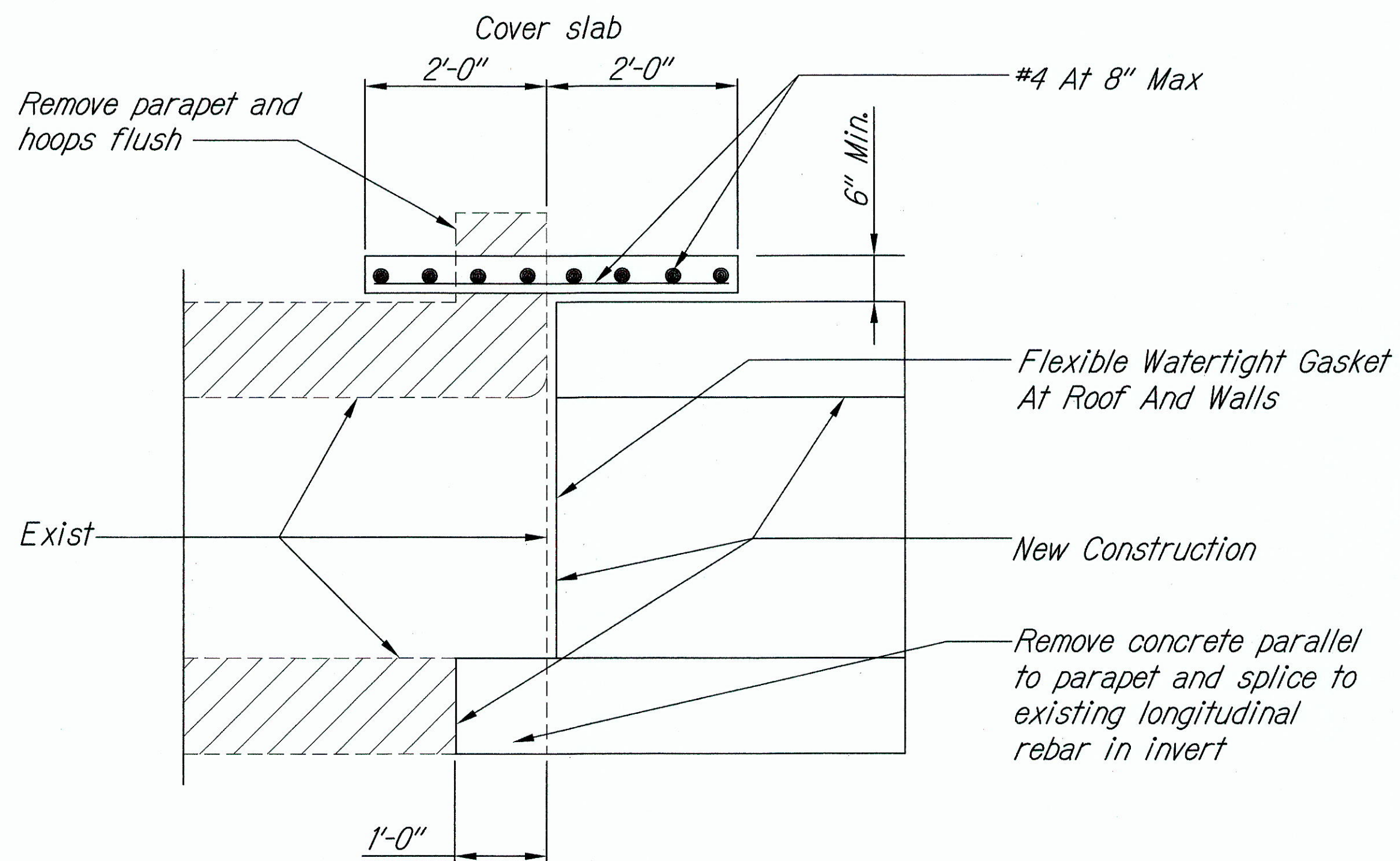
Note:
Extend Longitudinal Bars
in Box Walls, 2'-0" Into Wing Walls

TYPICAL SECTION OF 6' x 3' BOX CULVERT
Scale: 3/4" = 1'-0"



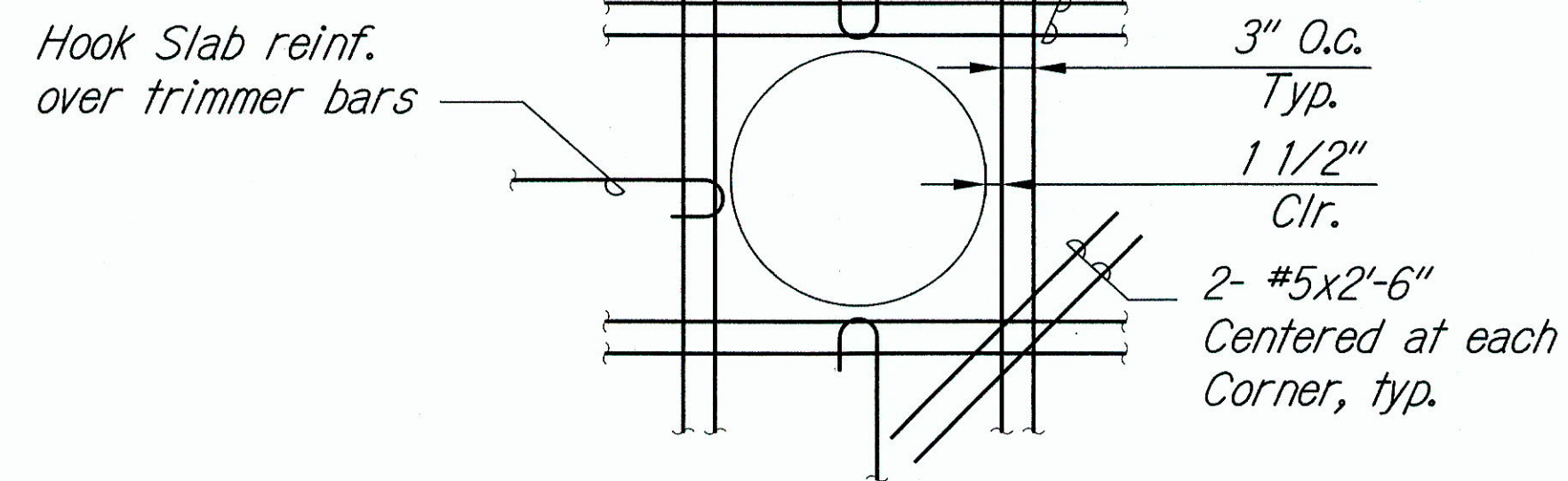
Note:
Extend Longitudinal Bars
in Box Walls, 2'-0" Into Wing Walls

TYPICAL SECTION OF 6' x 1' BOX CULVERT
Scale: 3/4" = 1'-0"

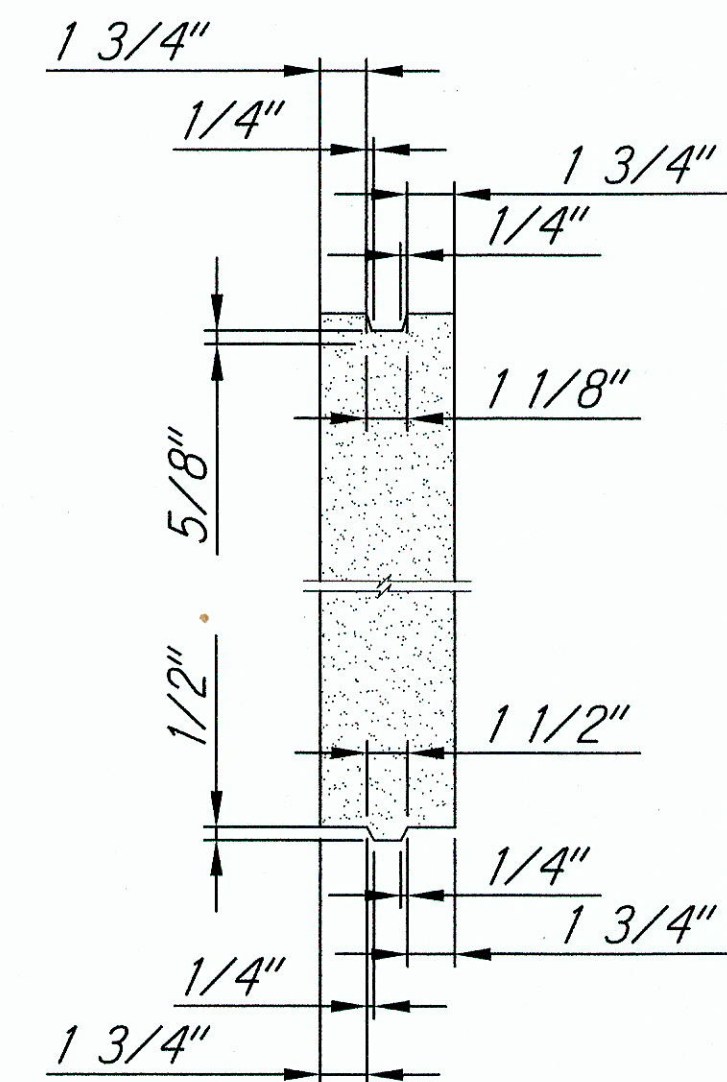


TYPICAL EXTENSION DETAIL
Not To Scale

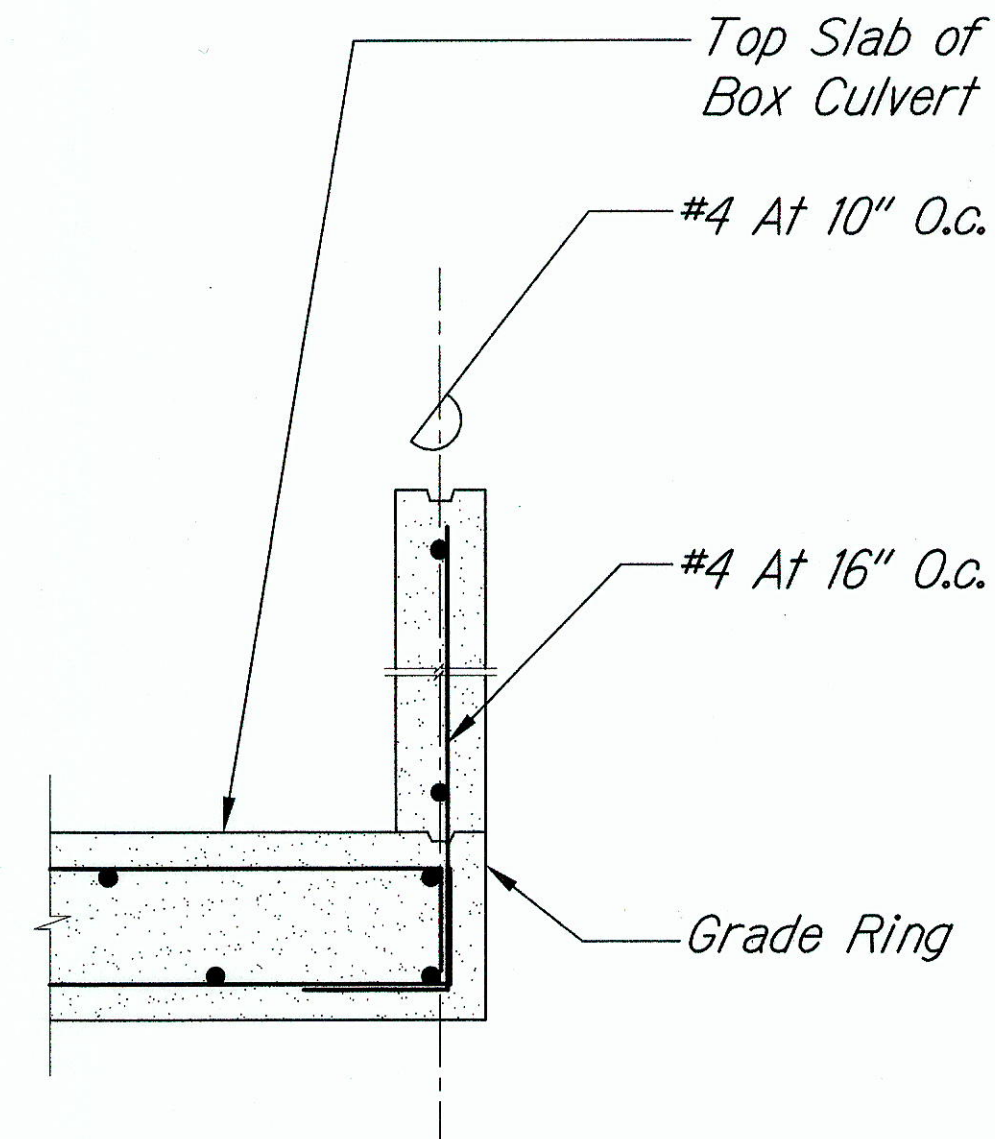
Trimmer Bars:
Replace Slab Bars interrupted by
opening, 1/2 each side, extending from
support to support, except not less than
1-#5 Top and Bott.



TYPICAL SLAB REINF. AT OPENING
Not To Scale



TYPICAL GRADE RING DETAIL
Not To Scale



END WALL DETAIL
Not To Scale

SURVEY PLOTTED BY	DATE
DRAWN BY	
TRACED BY	
DESIGNED BY	
CHECKED BY	
ORIGINAL PLAN	
NOTE BOOK	
No.	



THIS WORK WAS PREPARED BY ME
OR UNDER MY SUPERVISION

[Signature]

SIGNATURE

EXPIRATION
DATE OF THE
LICENSE

STATE OF HAWAII
DEPARTMENT OF TRANSPORTATION
HIGHWAYS DIVISION
BOX CULVERT DETAILS

FARRINGTON HIGHWAY DRAINAGE IMPROVEMENTS
Vicinity of Orange St.
Project No. 93B-01-11
Scale: AS SHOWN Date: FEB 2012
SHEET No. 1 OF 1 SHEETS