



# Roll-Off Container Filter

## *Designed to Dewater*

The Roll-Off Container Filter is engineered to dewater various types of wastes. The design of the Container Filter includes three components: the container, porous support plates, and a filter media. The space between the support plates, the container walls, and the floor, is the drainage field for the liquid. Outlets on the bottom and side walls allow for gravity drainage or pump suction of liquid from the Container Filter. Once the waste has had ample time to dewater, it will be ready for disposal.

Roll-Off units have a round bottom with 3" drainage ports, gasketed watertight doors, 1/4" floor, and 3/16" side walls. These units are sandblasted with a commercial-blast, coated with a two-part epoxy primer, and painted with a two-part epoxy top coat. Each unit can be equipped with a closed roof, a tarp, or an open top. As an option, a center panel can be added to increase the drainage surface area. Roll-Off Container Filters are available in 20, 25, 30, and 40 cubic yard capacities.



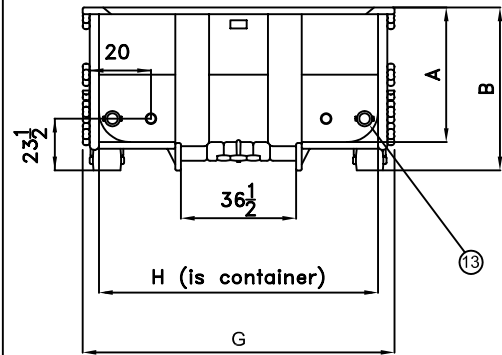
- Screened Materials
- Storm & Basin Waste
- Various Waste Streams
- Primary & Secondary Grit
- Lagoons
- Aeration Basins
- Sumps
- Wash Station Waste

U.S. Patent Nos. 4,871,454 and 5,595,654

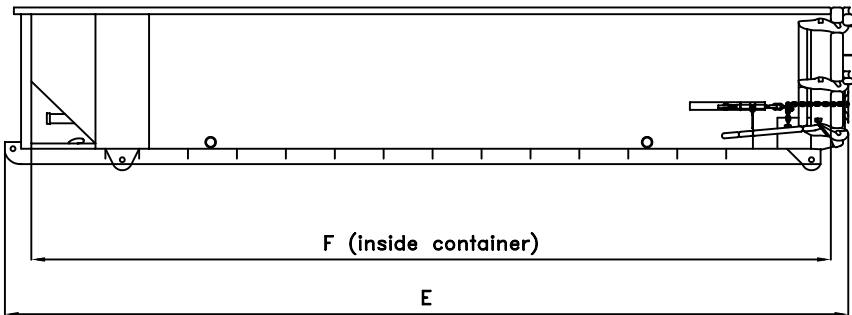
Flo Trend Systems Tel - 713-699-0152  
707 Lehman St. 800-762-9893  
Houston, TX 77018 Fax - 713-699-8054  
sales@flotrend.com

MODEL #	VOLUME	A	B	C	D	E	F	G	H	WEIGHT (APPROX)	DRAINS
RB-20-XX	20 YD <sup>3</sup>	41"	53"	28 1/2"	38"	277 1/2"	260"	102"	83 3/4"	7390 LB	6
RB-25-XX	25 YD <sup>3</sup>	53"	65"	36 1/2"	46"	277 1/2"	260"	102"	83 3/4"	8615 LB	6
RB-30-XX	30 YD <sup>3</sup>	65"	74"	40 1/2"	50"	277 1/2"	260"	102"	83 3/4"	9500 LB	6
RB-40-XX	40 YD <sup>3</sup>	81"	93"	65 1/2"	75"	277 1/2"	260"	102"	83 3/4"	11870 LB	6

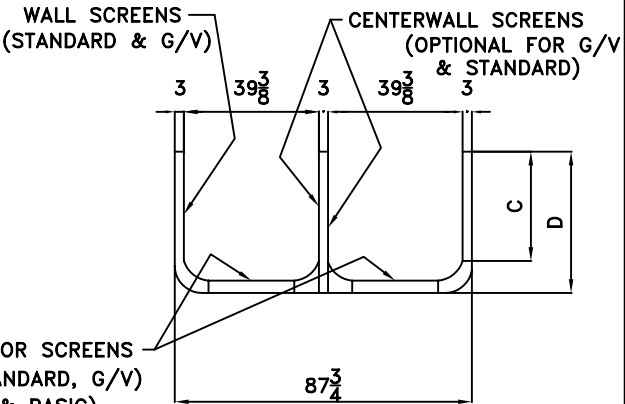
ITEM	DESCRIPTION
1	3/16 WALL PLATE
2	1/4 FLOOR PLATE
3	TOP RAIL 4 X 3 X 3/16 TUBING
4	SBR NEOPRENE 50/50 BLEND GASKET
5	3/16-A36 DOOR PLATE
6	3 X 3 X 3/16 DOOR TUBING
7	A36 CARBON STEEL SIDE & FRONT PLATES
8	3 RACHET BINDERS
9	3" DRAINS w/CAMS & CAPS (6)
10	8" DIA., 8" WIDE WHEELS
11	4" DIA., 6" WIDE TRACKING WHEELS
12	TARP HOOKS
13	6" CLEANOUT PORTS (2)



FRONT END VIEW



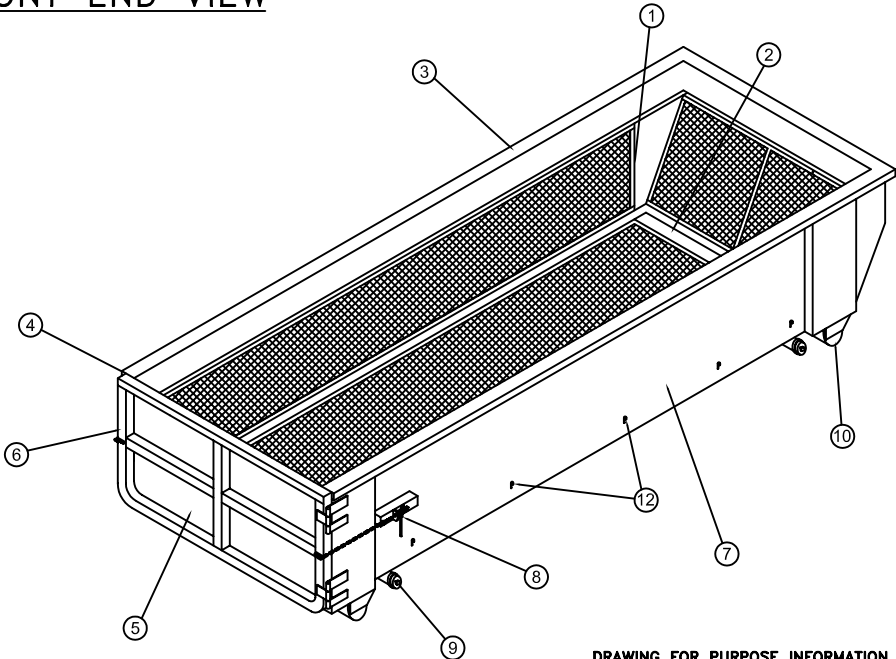
SIDE VIEW



TYP CROSS SEC

THESE DRAWINGS CONTAIN CONFIDENTIAL PROPRIETARY INFORMATION. THEY ARE NOT TO BE COPIED, REPRODUCED OR USED IN ANY MANNER THAT WOULD COMPROMISE THE CONFIDENTIALITY OF THE INFORMATION CONTAINED HEREIN. THESE DRAWINGS ARE NOT TO BE USED FOR CONSTRUCTION, FABRICATION OR SPECIFICATION WRITING PURPOSES UNLESS A SPECIFIC CONFIDENTIALITY AGREEMENT AND LICENSING AGREEMENT HAVE FIRST BEEN ENTERED INTO WITH FLO TREND SYSTEMS, INC. OF HOUSTON, TEXAS. FAILURE TO OBSERVE THE CONDITION OF THIS NOTICE WILL RESULT IN PROSECUTION AS ALLOWED UNDER THE LAWS OF THE STATE OF TEXAS, U.S.A. OR THOSE OF ANY OTHER APPROPRIATE JURIDICTION AS FLO TREND SYSTEMS, INC.

PATENT NO. 4,871,454 AND PATENT PENDING



DRAWING FOR PURPOSE INFORMATION ONLY (SUBJECT TO CHANGE WITHOUT NOTICE)

<div> <div></div> <div>FLO TREND SYSTEMS, INC.</div> </div>		707 LEHMAN	HOUSTON, TEXAS 77018
SCALE:		DRAWN BY:	
NONE		APPROVED BY:	JM
DATE:		DESCRIPTION	REVISED
08-14-01		GENERAL ARRANGEMENT	
TITLE		DRAWING NUMBER	
FLO TREND SYSTEMS ROLL-OFF BOXES		RB-DATA01	

## Frac Tanks

Thursday, 29 April 2010 16:43



### Portable Liquid Storage Tank/Frac Tank - 21,000 Gallon Capacity

All BTI tanks are coated with Phenoline 309 epoxy, have contoured full drain bottoms, smooth walls with no internal bracing for easy cleaning, equipped with multiple valves (front and rear), liquid level gauges, manifolds (interior or exterior), OSHA approved, have integrated stairways with larger walkways and platforms, among other features.

BTI tanks are available for rent and long term on-site use. BTI can accommodate special requests and manipulate tanks to meet specific client needs.

BTI can provide filtration systems, hoses, pumps and spill guards depending on your on-site project needs.

### Features:

- All 1/4" Steel Plate Construction
- Smooth Interior Walls
- Contoured Full Drain Bottoms
- Static Liquid Level Gauges
- Integrated Stairways with Larger Walkways and Platforms
- Safety Harness Clips for Worker Safety
- Lifting Eyes for Difficult Tank Placement
- ABS Braking Systems
- Multiple Options Available

### Specifications

Length:	45 ft. (540 inches)
Width:	8 ft. 5 inches (102 inches)
Height:	11 ft. (133 inches)
Capacity:	500.9 bbl (21,037 Gals)
Weight:	28,500 Lbs.
Operating Specs:	Max Pressure Rating 1 P.S.I. / Max Vacuum Rating 0.25 P.S.I.
Side Wall:	1/4" A36 Steel
Plate Floor:	1/4" A36 Steel
Plate Roof:	1/4" A36 Steel
Plate Exterior	6" x 3" x 3/16" Formed Channel Sides and Roof
Supports:	
Main Rails:	12" x 3" - 20.7 # Structural Channel
Manways:	3 – 20" Manways, Located in Front, Top & Rear. 1 – 26" Manway on the Side. Equipped with Buna-N Gaskets
Relief Valve:	Blaylock Pressure / Vacuum Valve Model LL10 16 oz / in <sup>2</sup> Pressure – 0.4 oz / in <sup>2</sup>
Vacuum Metering Gauge:	2 – 8" Stainless Steel Float
Balls Drain Valves:	4" Butterfly Valves Front and Rear

Fill Lines:	3" Sch 80 Front Fill Line W/Cap 3" Sch 80 Rear Fill Line W/Cap
Gel Line:	4" Gel line with Butterfly Valve
Manifold:	8" Front Manifold with Hammer Lock Fittings Suspension: Spring – 22.5 K Capacity
Axle:	5" rd, 77.5" track, 22.5K Capacity
Wheels & Tires:	8.25 x 22.5 Steel Wheels with 11R22.5 – 14 ply tires
Lights:	D.O.T. Approved Lights
Blast:	Interior – SSPC-SP10 Exterior – SSPC- SP6
Interior Paint:	100% Solids Epoxy – Gray (25 to 30 mils) Carboline Phenoline # 309
Exterior Paint:	Polyurethane 6 – 9 Mils

Maximum specific gravity of fluid to be stored in tank is S.G. 1.92 or 16 pounds per gallon.

Maximum fluid temperature to be stored in tank is to be no greater than 180° F. Minimum fluid temperature is to be no less – 40° F.

Steel tanks are not rated for either pressure or vacuum. All tanks must be vented. Minimum PH value to be stored in tank (coated) is 3.

Maximum PH value to be stored in tank (coated) is 12.

### BTI also offers:

Closed top Frac Tanks/21,000 gallon capacity

Open Top Weir Tanks (over and under weirs)

Open Top Flow Back Tank 238 barrel/10,000 gallon tank

239 40 cy Phase Separators



## Mini Tank

Wednesday, 28 April 2010 22:05



### Portable Liquid Storage Tank - 10,000 Gallon Capacity

All BTI tanks are coated with Phenoline 309 epoxy, have contoured full drain bottoms, smooth walls with no internal bracing for easy cleaning, equipped with multiple valves (front and rear), liquid level gauges, manifolds (interior or exterior), OSHA approved, have integrated stairways with larger walkways and platforms, among other features.

BTI tanks are available for rent and long term on-site use. BTI can accommodate special requests and manipulate tanks to meet specific client needs.

BTI can provide filtration systems, hoses, pumps and spill guards depending on your on-site project needs.

### Features:

- Smooth Walls, No Internal Bracing
- Liquid Level Gauges
- Roll-Off Capable
- Lifting Eyes for Easy Placement
- Vapor Secure
- Special Modifications Available
- Chemical Resistant Epoxy Lining
- Small Footprint for Difficult Placements
- Economical

### Specifications

Length:	23' (276 inches)
Height:	7' 3" (87 inches)
Width:	8' (96 inches)
Capacity:	10,000 Gallons (238 bbls)
Operating Specs:	Max Pressure
Rating	1 P.S.I. / Max Vacuum
Rating	0.25 P.S.I.
Side Wall:	¼" A36 Steel Plate
Floor:	¼" A36 Steel Plate
Roof:	¼" A36 Steel Plate
Exterior Supports:	6" x 3" 3/16" Formed Channel Sides and Roof
Main Rails:	Structural Channel = 10" x 2 ½ " x 15.30 pounds per foot
Manways:	3 – 20" Manways, Side, Top and Front, Equipped with Buna-N Gaskets
Relief Valve:	Blaylock Pressure / Vacuum Valve, Model LL10, 16oz / in <sup>2</sup> Pressure – 0.4 oz / in <sup>2</sup> Vacuum
Metering Gauge:	2 – 8" Stainless Steel Float Balls
Drain / Fill Valves:	4" Butterfly Valves Front and Rear
Fill Lines:	3" Sch 80 Front Fill Line w/cap 4" Male Pipe Thread / Front & Rear

2" Male Pipe Thread / Top

Blast: Interior – SSPC – SP10

Exterior – SSPC – SP6

Interior Paint: 100% Solids Epoxy – Gray (25 – 30 mils) Carboline Phenoline # 309

Exterior Paint: Polyurethane 6-9 mils

Maximum specific gravity of fluid to be stored in tank is S.G. 1.92 or 16 pounds per gallon

Maximum fluid temperature to be stored in tank is to be no greater than 180° F. Minimum fluid temperature is to be no less than -40° F.

Steel tanks are not rated for either pressure or vacuum. All tanks must be vented.

Minimum PH value to be stored in “coated” tank is 3. Maximum PH value to be stored in “coated” tank is 12.

### BTI also offers:

Closed top Frac Tanks/21,000 gallon capacity

Open Top Weir Tanks (over and under weirs)

Open Top Flow Back Tank

238 Barrel/10,000 gallon tank

40 cy Phase Separator

# Phase Separator

Thursday, 29 April 2010 00:07



## Phase Separator/DeWatering Box

All BTI tanks are coated with Phenoline 309 epoxy, have contoured full drain bottoms, smooth walls with no internal bracing for easy cleaning, equipped with multiple valves (front and rear), liquid level gauges, manifolds (interior or exterior), OSHA approved, have integrated stairways with larger walkways and platforms, among other features.

BTI tanks are available for rent and long term on-site use. BTI can accommodate special requests and manipulate tanks to meet specific client needs.

BTI can provide filtration systems, hoses, pumps and spill guards depending on your on-site project needs.

## Weights & Measures

Capacity:	38 Yard: filled to top
Height:	7 feet (84 inches)
Width:	8 feet 2 inches (98 inches)
Length:	20 feet (240 inches)
Dewatering Surface Area:	510 sq. feet
Weight (Empty):	11,800 lbs.

## Design Criteria

Side Walls:	3/16" A36 Carbon Steel Plate
Floor:	3/16" A36 Carbon Steel Plate
Rear Door:	3/16" A36 Carbon Steel Plate
Drains:	Two (2) 4" MPT Drains located on bottom of door.
Valves:	2- 4" Wafer Valves with Stainless Steel Shaft & Butterfly Buna Gaskets
Rollers:	Four (4) – 8" x 10"
Screen / Grate:	4 lb 1 ¼ x 1" Galvanized bar grating welded to container.
Filter Hooks:	Support Hooks – 6 per side, 4 on door, 4 on front panel
Cleanout Space:	Three (3) inches along walls, 4 inches Above floor
Gallon Capacity:	9324 Gallons
Tarp / Lid:	Vinyl Cover Interior
Walls:	309 Phenoline Epoxy Coating
Exterior Walls:	PPG Urethane
Door:	Locking Barn Door Style Gate.

## Features

Phase separators can be cleaned without removing any components or filter panels due to the space between the support screens and walls / floor.

Filter cloths and filter mesh available in various micron sizes. These units utilize a disposable filter media (filter cloth) which enhances dewatering efficiency.

Dewater sludge, clarifier bottoms, fly ash, grit, sand, screenings, etc.

Recover product or clarify aqueous phase.

Phase Separator retains solid material for transportation and disposal.

Roll – off capable / transportable.

Dewatering screens cover the interior of the box including bottom, sides and back, maximizing the drainage surface area.

BTI Phase Separators have the largest decanting surface area in the industry.

Phase Separator may be lined with a variety of filter media to match the characteristics of the material.

Water tight gate is gasketed and side hinged for easy unloading of material / sludge.

Complies with landfill disposal regulations.

Phase Separator has two 4" drainage ports which maximize operational efficiency.

## **BTI also offers:**

Closed top Frac Tanks/21,000 gallon capacity

Open Top Weir Tanks (over and under weirs)

Open Top Flow Back Tank

238 Barrel/10,000 gallon tank

40 cy Phase Separator