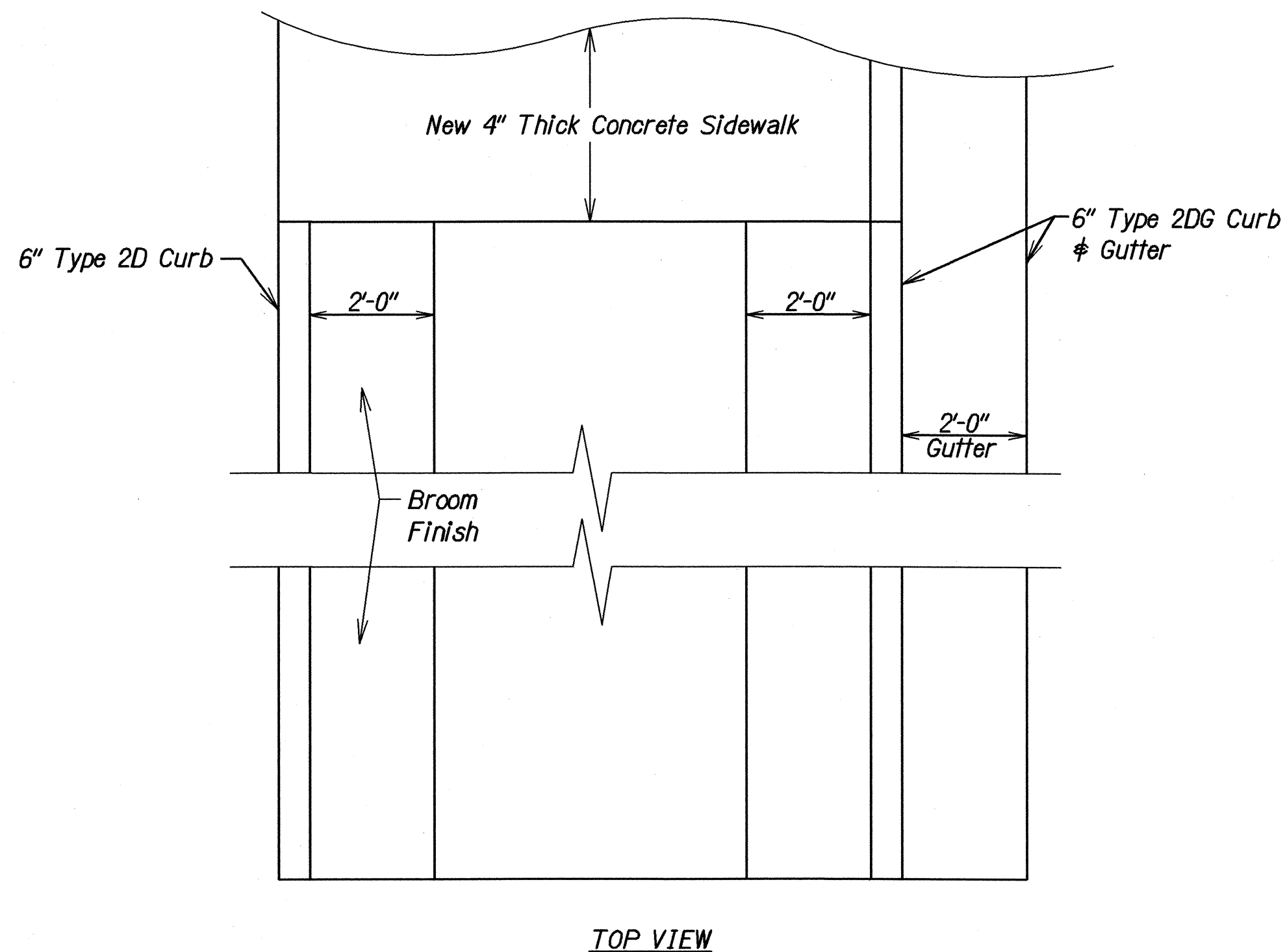
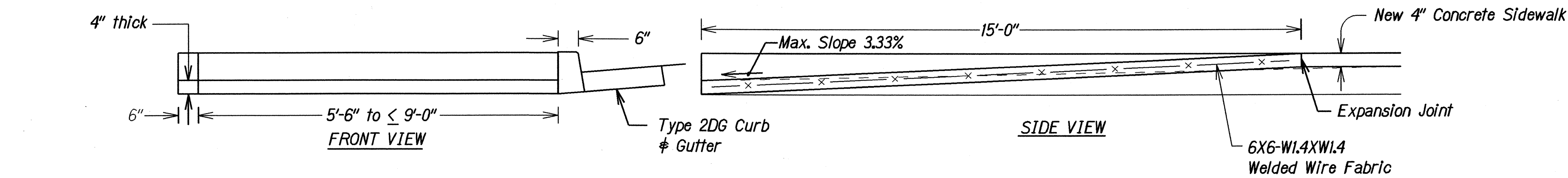


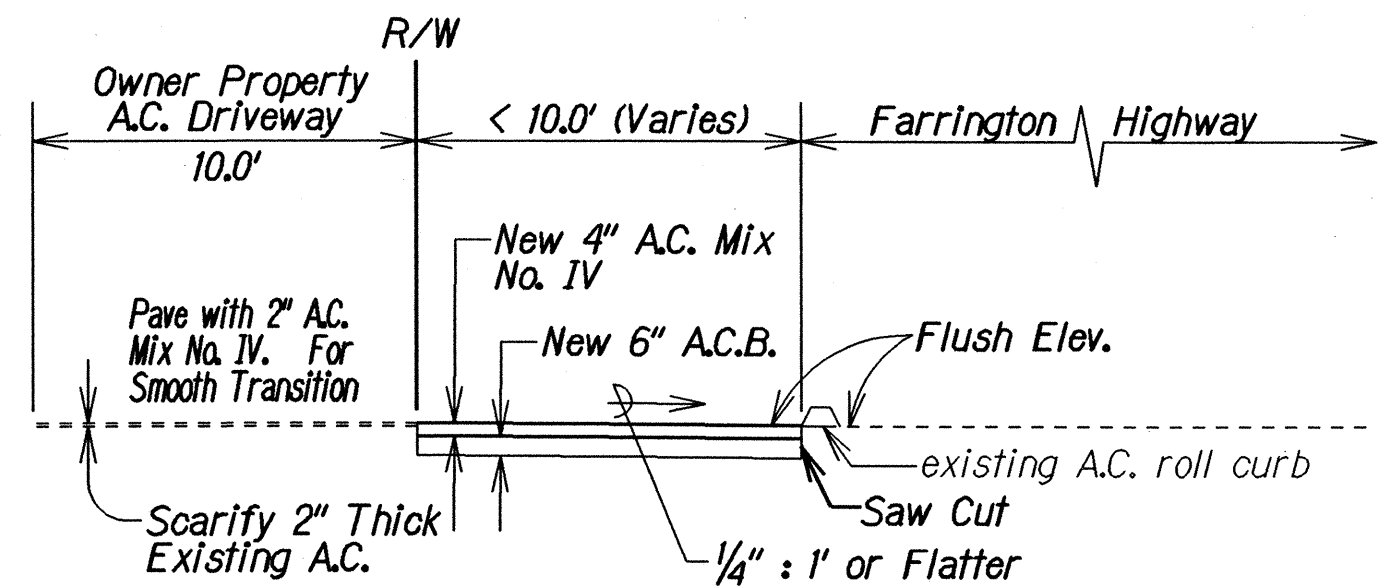
Diagram illustrating a 6 x 6 inch WWF specimen with a 1/8 inch width transverse weakened plane joint (score line). The specimen is shown in a perspective view, with dimensions A and B indicated. The joint is labeled "1/8\" Width Transverse Weakened Plane Joints (Score Lines)". The specimen is labeled "Sidewalk or Pavement". The thickness of the specimen is indicated as d=1". The width of the specimen is indicated as 4". The specimen is labeled "6 x 6 w 1.4/w 1.4 WWF".

**ADD. 9**

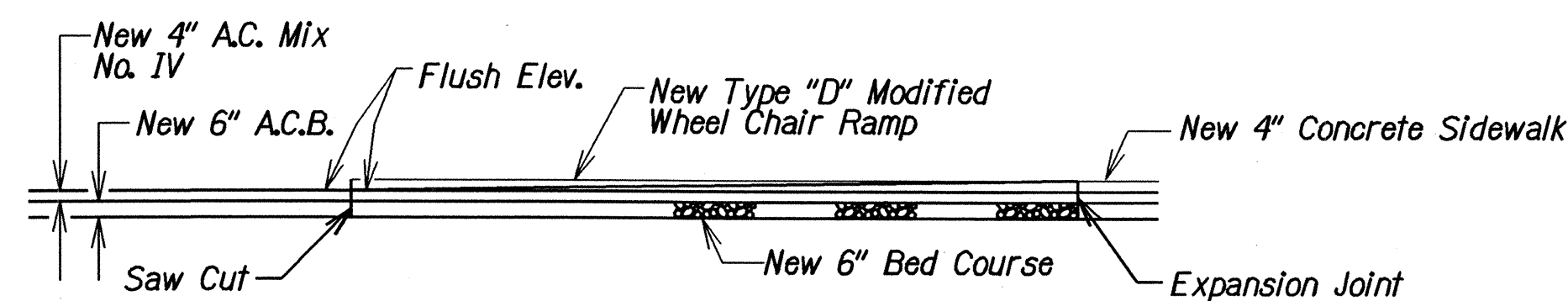
FED. ROAD DIST. NO.	STATE	PROJ. NO.	FISCAL YEAR	SHEET NO.	TOTAL SHEETS
HAWAII	HAW.	93A-01-01 93A-02-01	2004	ADD.10	48



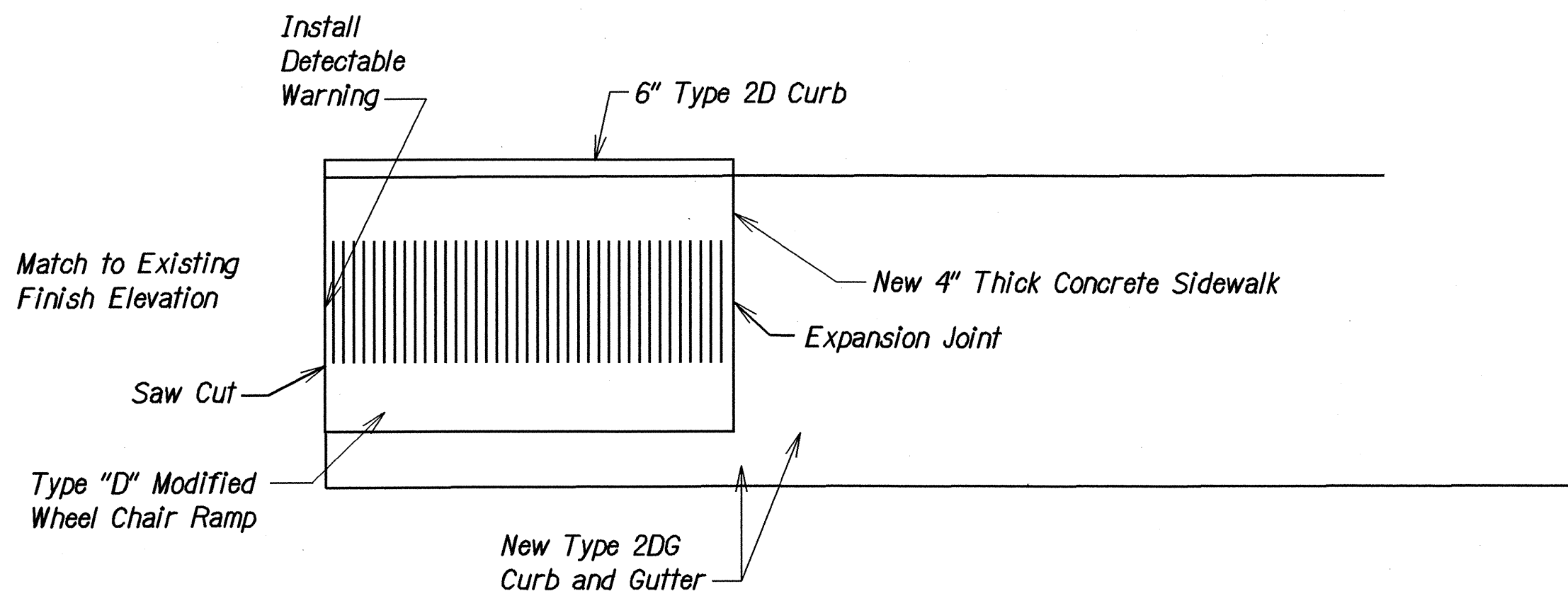
TOP VIEW  
WHEEL CHAIR RAMP TYPE "D" MODIFIED  
Scale: 1/2" = 1'-0"



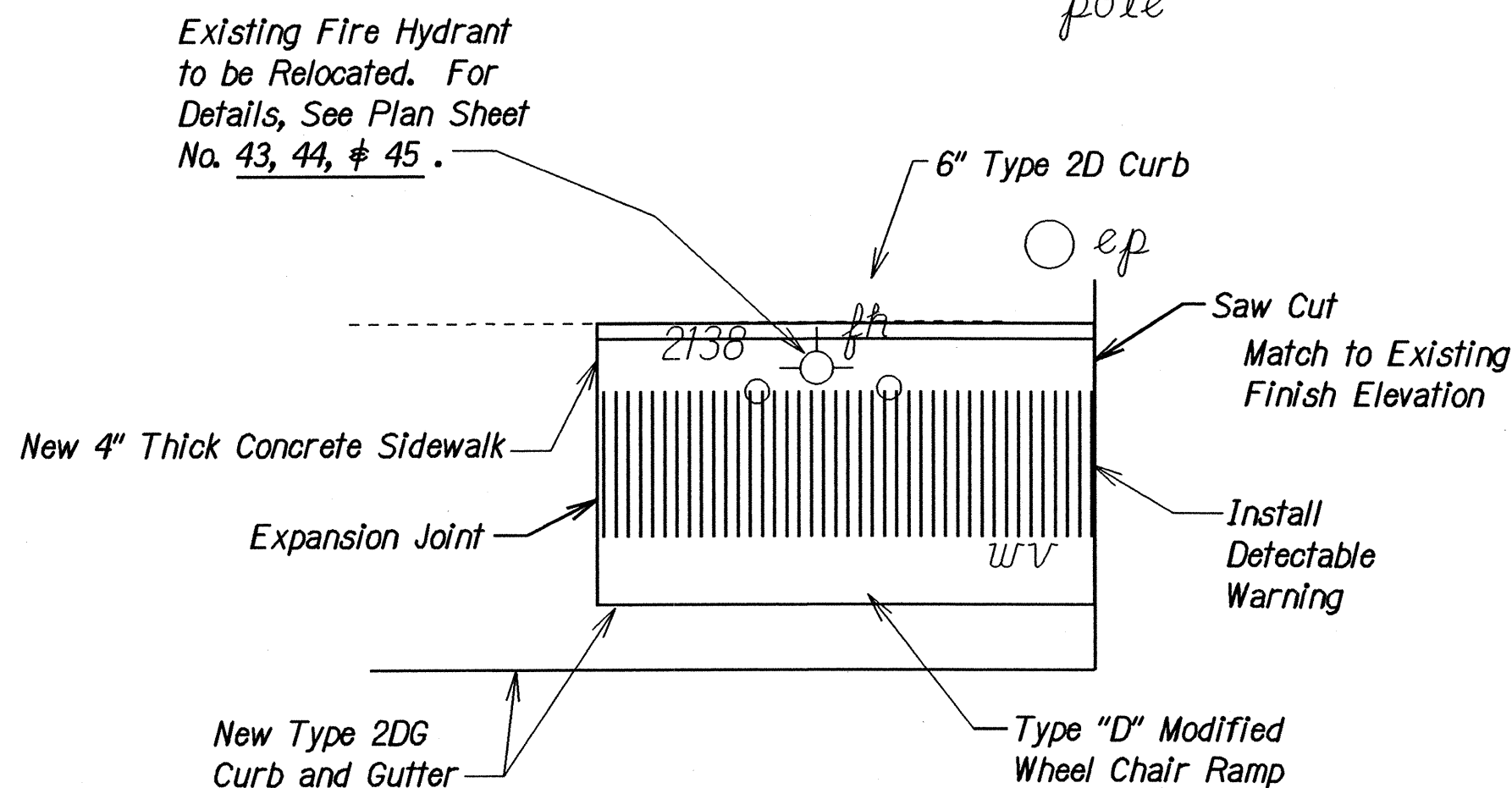
NEW 4" AC. SIDEWALK DETAIL  
FLUSH TO EXISTING  
Not to Scale



AC. SIDEWALK-TYPE "D" MODIFIED  
TRANSITION  
Not to Scale



NEW WHEEL CHAIR RAMP LOCATION @ Sta. 168+70±  
Scale: 1" = 5'



NEW WHEEL CHAIR RAMP LOCATION @ Sta. 176+90±  
Scale: 1" = 5'

11/24/03	Added Detectable Warning. Amended Scarification thickness.
----------	---

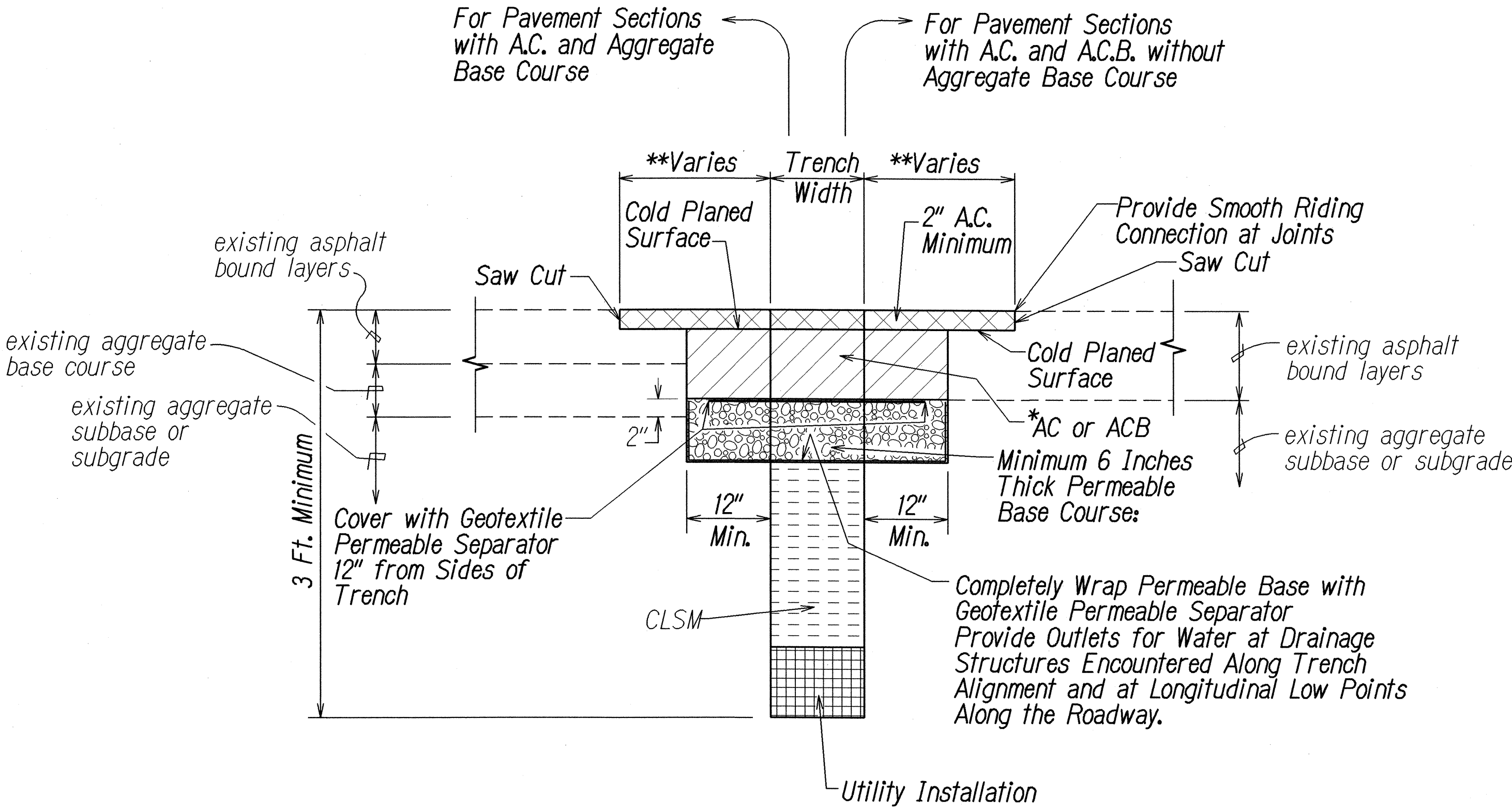
DATE	REVISION
------	----------

STATE OF HAWAII DEPARTMENT OF TRANSPORTATION HIGHWAYS DIVISION <b>DRIVEWAY DETAILS</b> FARRINGTON HIGHWAY DRAINAGE IMPROVEMENTS Vicinity of Nanakuli Avenue to Nanakuli Stream and Vicinity of Lualei Place to Princess Kahanu Avenue Project Nos. 93A-01-01 & 93A-02-01 Scale: As Shown Date: August, 2002 SHEET No. 1 OF 5 SHEETS	
--	--

SURVEY PLOTTED BY	DATE
DRAWN BY	
DESIGNED BY	
QUANTITIES BY	
CHECKED BY	
ORIGINAL PLAN	
NOTE BOOK	



FED. ROAD DIST. NO.	STATE	PROJ. NO.	FISCAL YEAR	SHEET NO.	TOTAL SHEETS
HAWAII	HAW.	93A-01-01 93A-02-01	2004	ADD.11	48



**Notes:**

1. This trench restoration is to be used wherever the pavement is an asphalt surface, including medians and paved areas between guardrails. For trenches located in unpaved areas, the backfill need not be CLSM and can be backfilled as specified in the Standard Specifications.
2. Tack coat existing asphalt bound material faces prior to filling excavation with asphalt bound material.
3. When ground water is encountered in trenches, backfill with gravel conforming to ASTM C-33, size 67 material until one foot above the water level. Encapsulate the Size 67 material with a permeable separator that lines the bottom and sides of the trench and overlaps at the top of the material for the width of the trench. Complete backfilling the trench per detail.

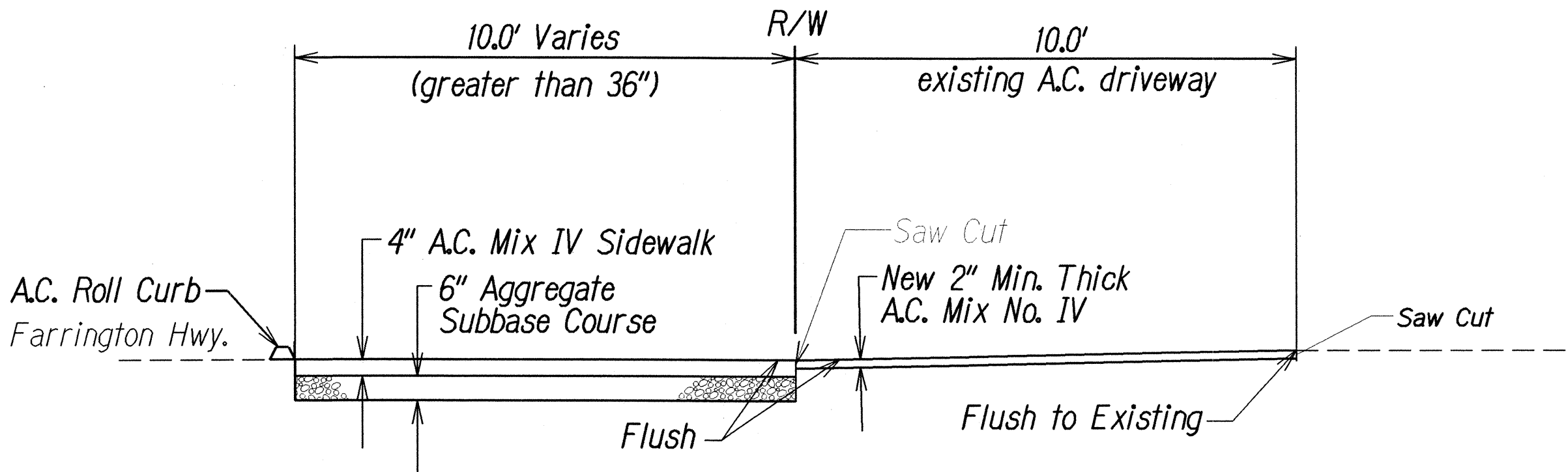
**\*Notes:**

1. When thickness less than 6", use AC.
2. When thickness 6" or greater, use ACB or AC.

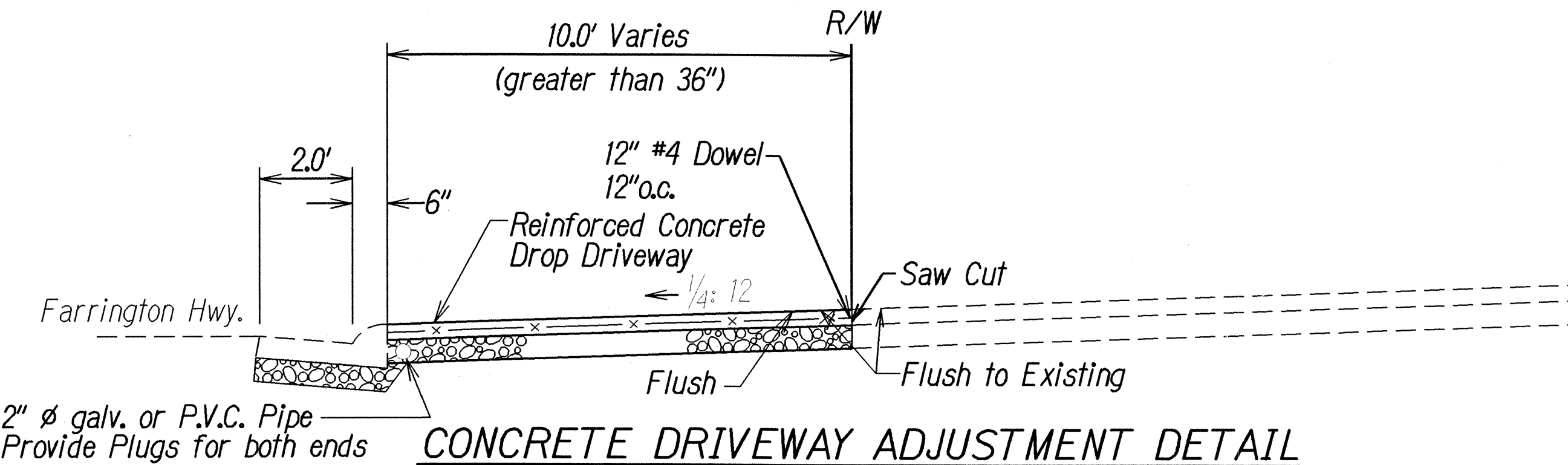
**\*\*Notes:**

1. If trench aligned transverse to direction of travel, 6 feet on each side of trench.
2. If trench aligned along direction of travel, to edge of lane in which edge of trench is located.
3. Smoothness of paved surfaces:  
The distance from the paved surface to the testing edge of a ten-foot straight edge between two points of contract shall not exceed  $\frac{3}{16}$ ".

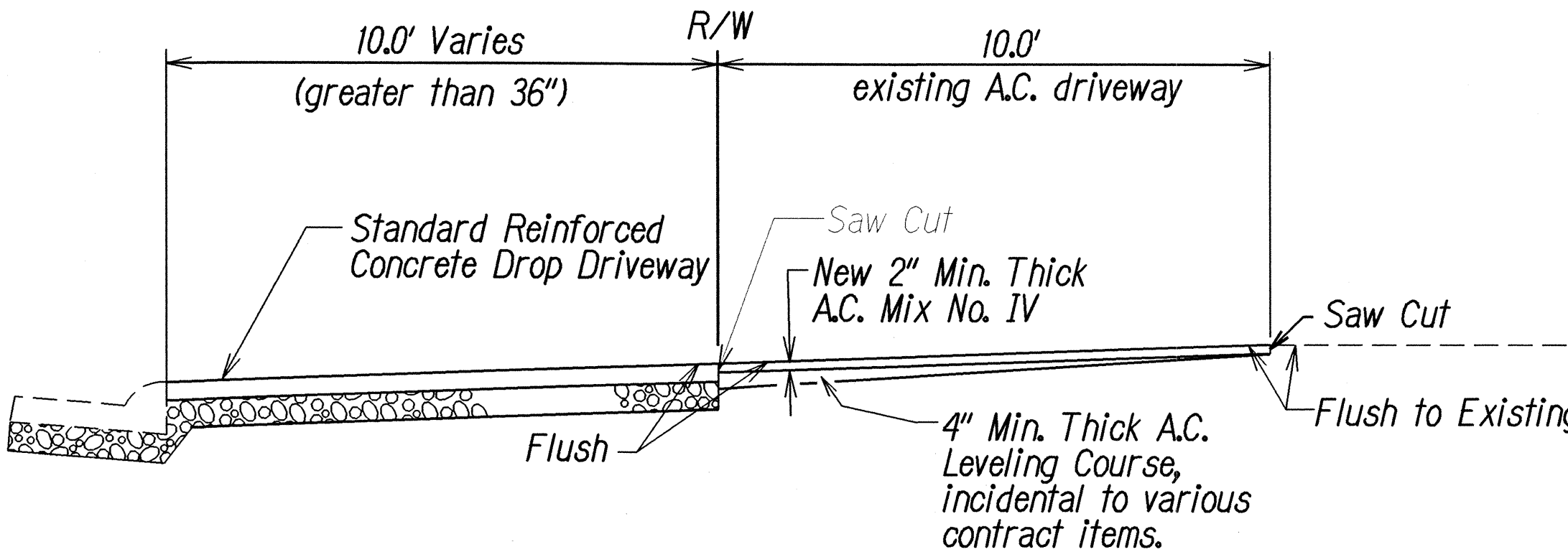
**ASPHALT PAVEMENT RESTORATION  
OVER TRENCH EXCAVATIONS  
for  
EXISTING PAVEMENTS WITHOUT  
PERMEABLE BASE**



**A.C. DRIVEWAY ADJUSTMENT DETAIL  
AT A.C. WALKWAY**



**CONCRETE DRIVEWAY ADJUSTMENT DETAIL  
@ STA. 175+99**



**A.C. DRIVEWAY ADJUSTMENT DETAIL  
@ STA. 172+34, @ STA. 173+92, @ STA. 175+35**

11/24/03	Added Saw Cut to Details. X
DATE	REVISION

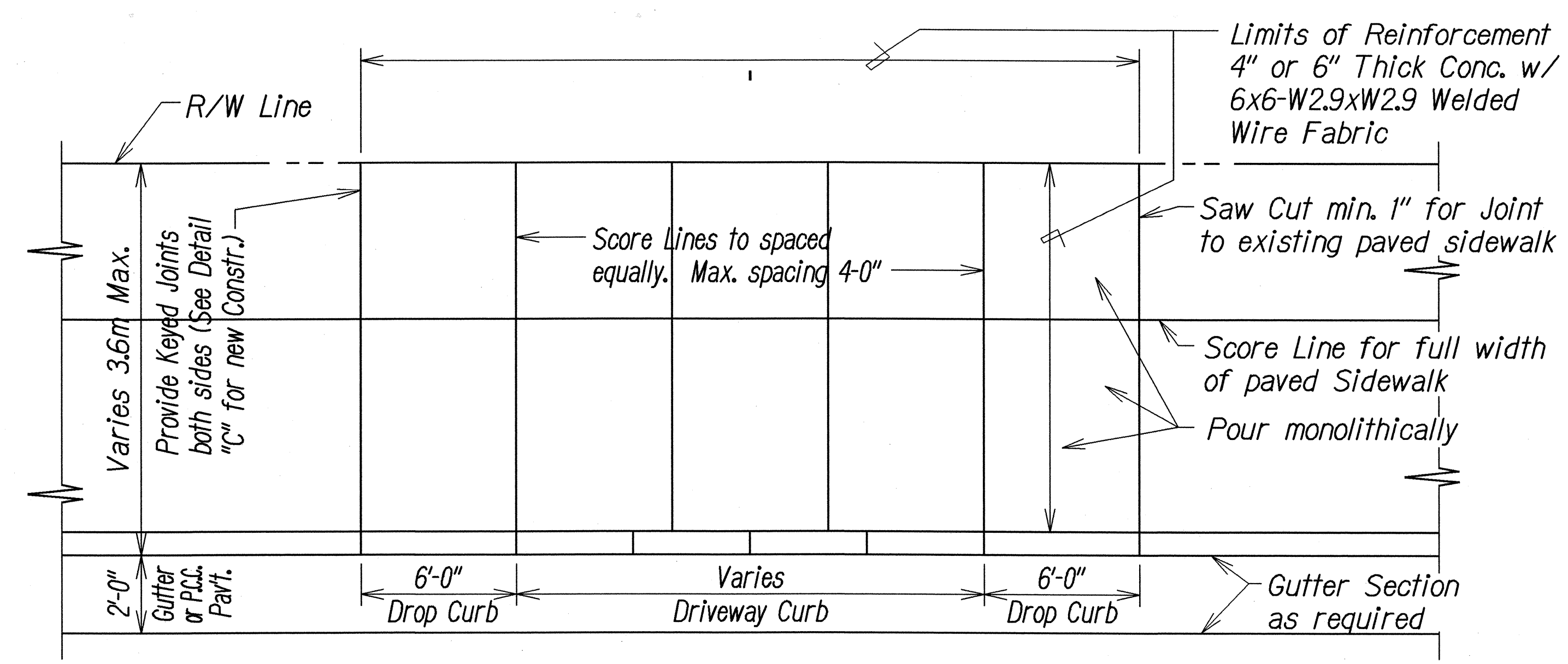
STATE OF HAWAII  
DEPARTMENT OF TRANSPORTATION  
HIGHWAYS DIVISION

**DRIVEWAY DETAILS**  
FARRINGTON HIGHWAY DRAINAGE IMPROVEMENTS  
Vicinity of Nanakuli Avenue to Nanakuli Stream and  
Vicinity of Lualei Place to Princess Kahanu Avenue  
Project Nos. 93A-01-01 & 93A-02-01  
Scale: Not to Scale Date: Oct., 2001

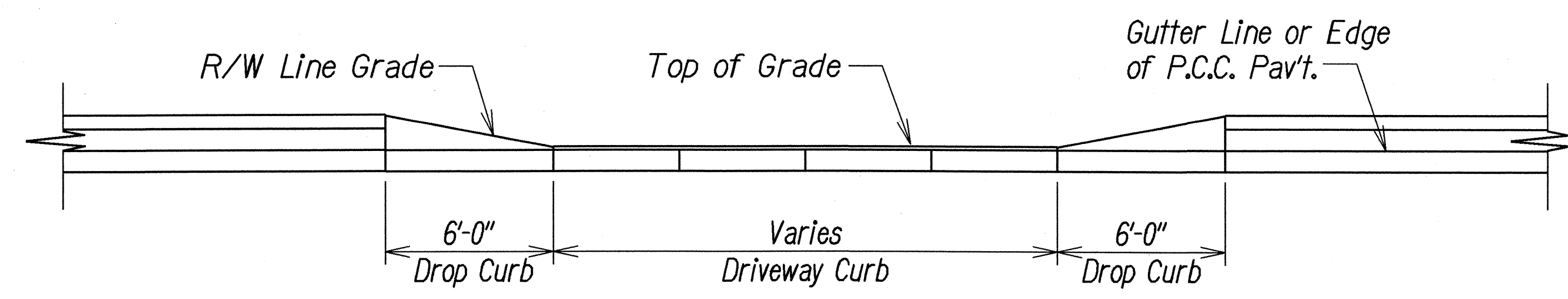
SHEET No. 2 OF 5 SHEETS

ORIGINAL PLAN	SURVEY PLOTTED BY	DATE
NOTE BOOK	DRAWN BY	
	DESIGNED BY	
	CHECKED BY	

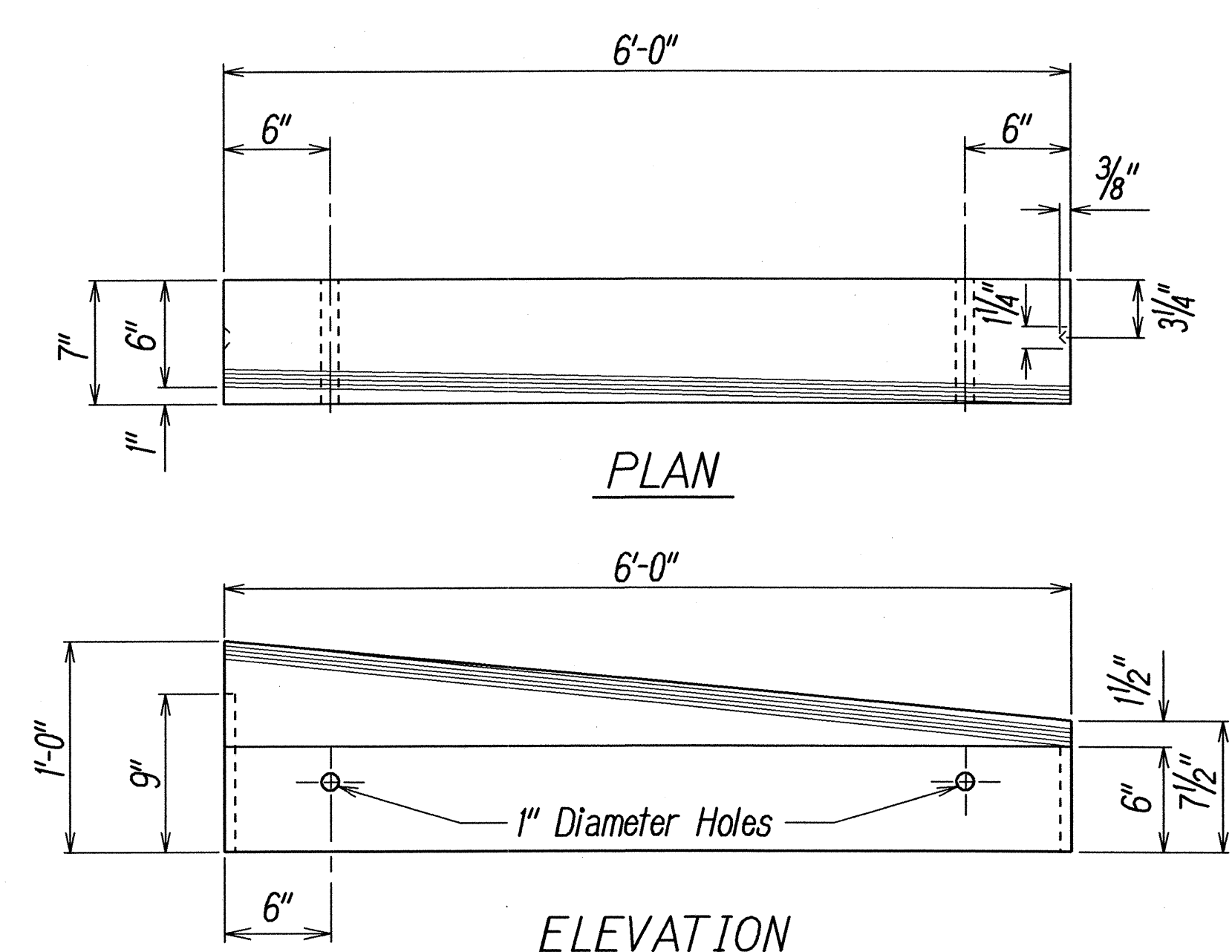
FED. ROAD DIST. NO.	STATE	PROJ. NO.	FISCAL YEAR	SHEET NO.	TOTAL SHEETS
HAWAII	HAW.	93A-01-01 93A-02-01	2004	ADD.12	48



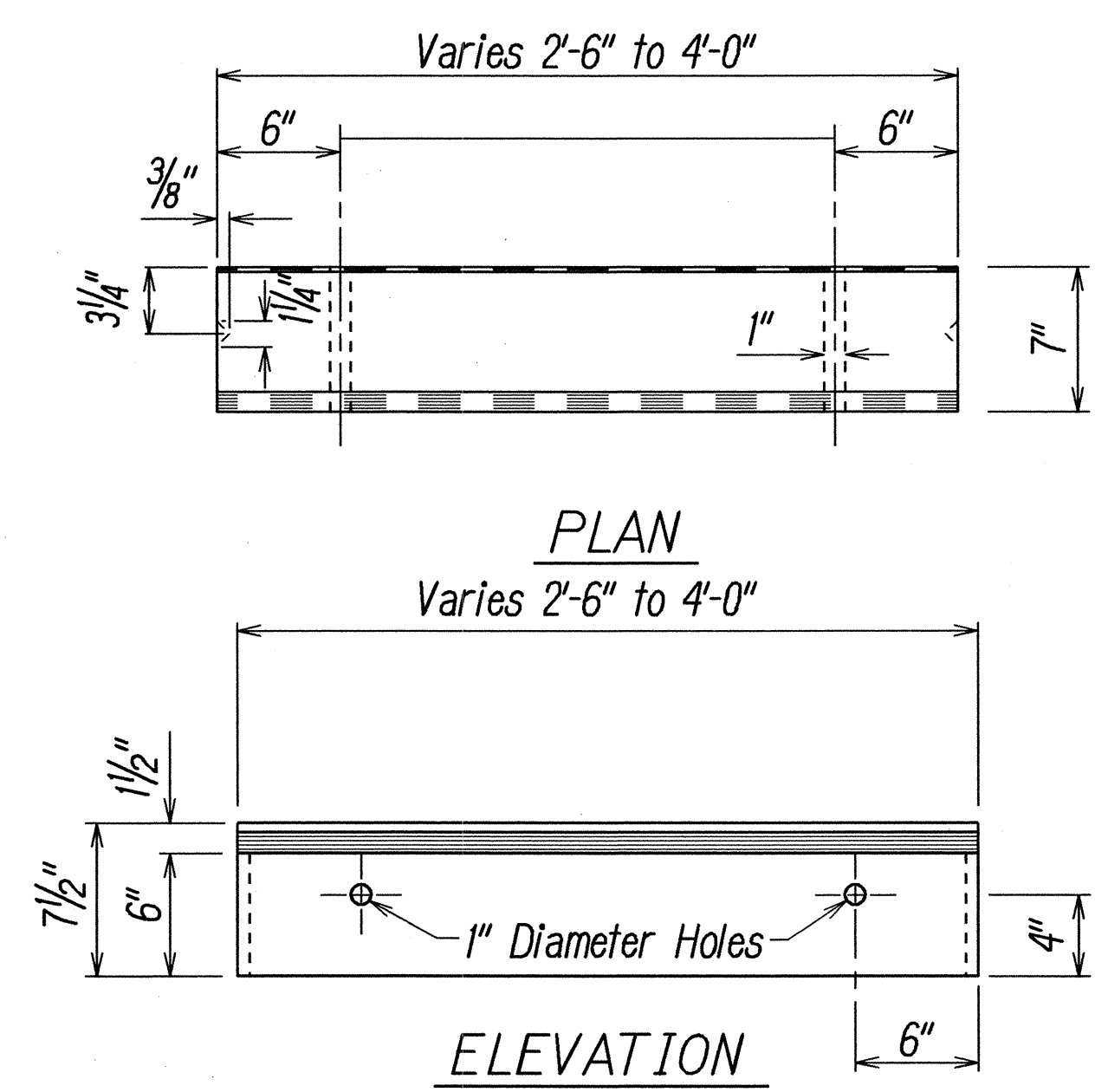
DRIVEWAY PLAN



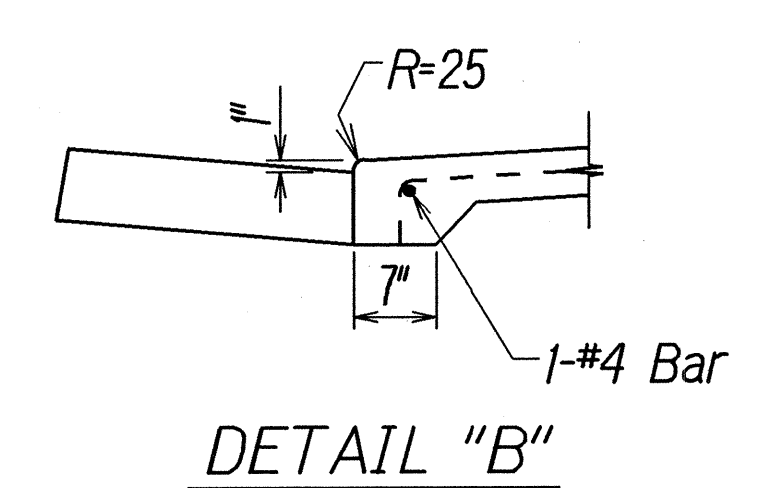
DRIVEWAY ELEVATION



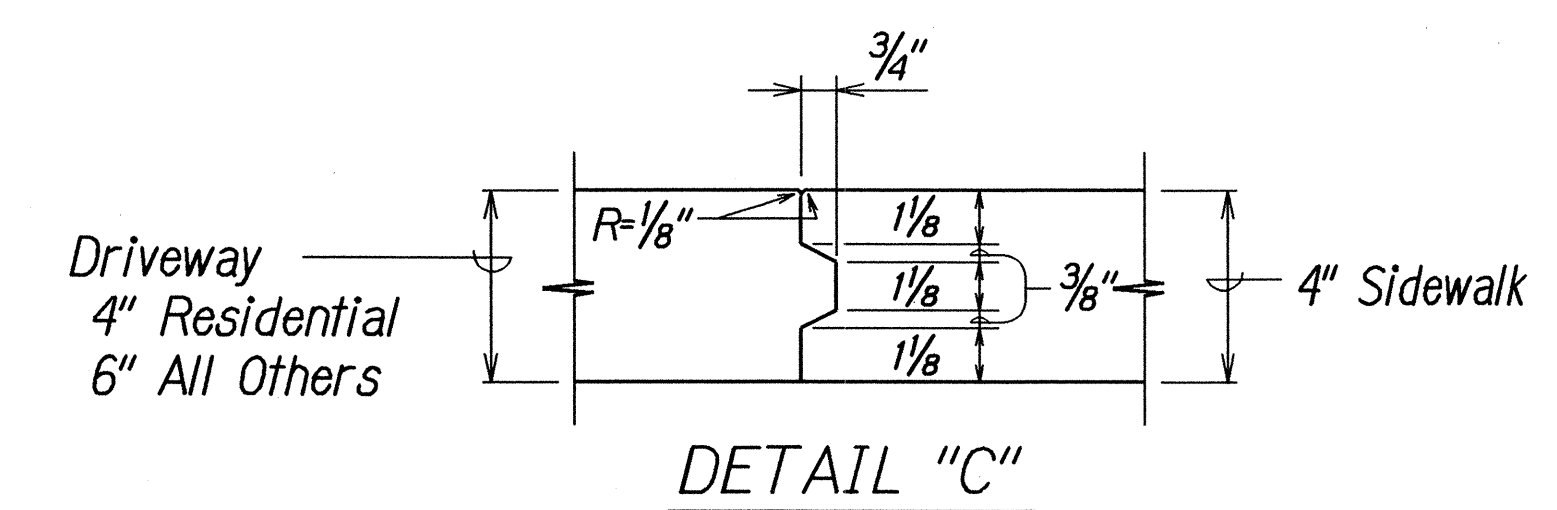
PRE-CAST CONC.  
DROP CURB BLOCK



PRE-CAST CONC.  
DRIVEWAY CURB



DETAIL "B"



DETAIL "C"

TYPICAL DETAILS OF REINF. CONC. DROP DRIVEWAY

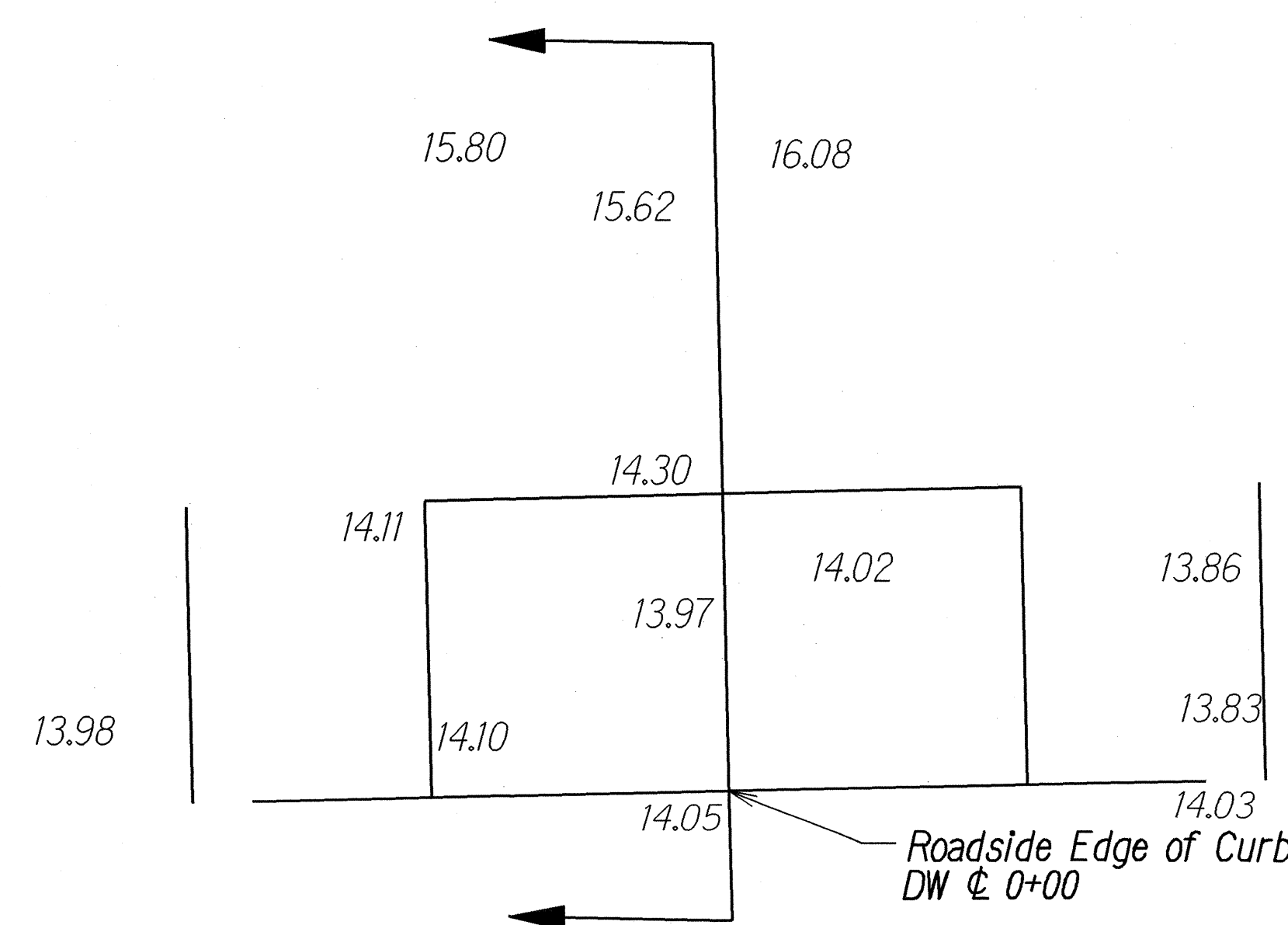
NOTES:

- Minimum Concrete Approach thickness
  - Residential = 4"
  - Commercial = 6"
- Thickness of Aggregate Subbase course beneath Concrete Pavement may be revised if deemed necessary by the Engineer.
- P.C.C. Gutters shall longitudinally broom finished.
- The top of all types of Concrete Curbs, including Driveway Curbs shall be longitudinally broom finished.

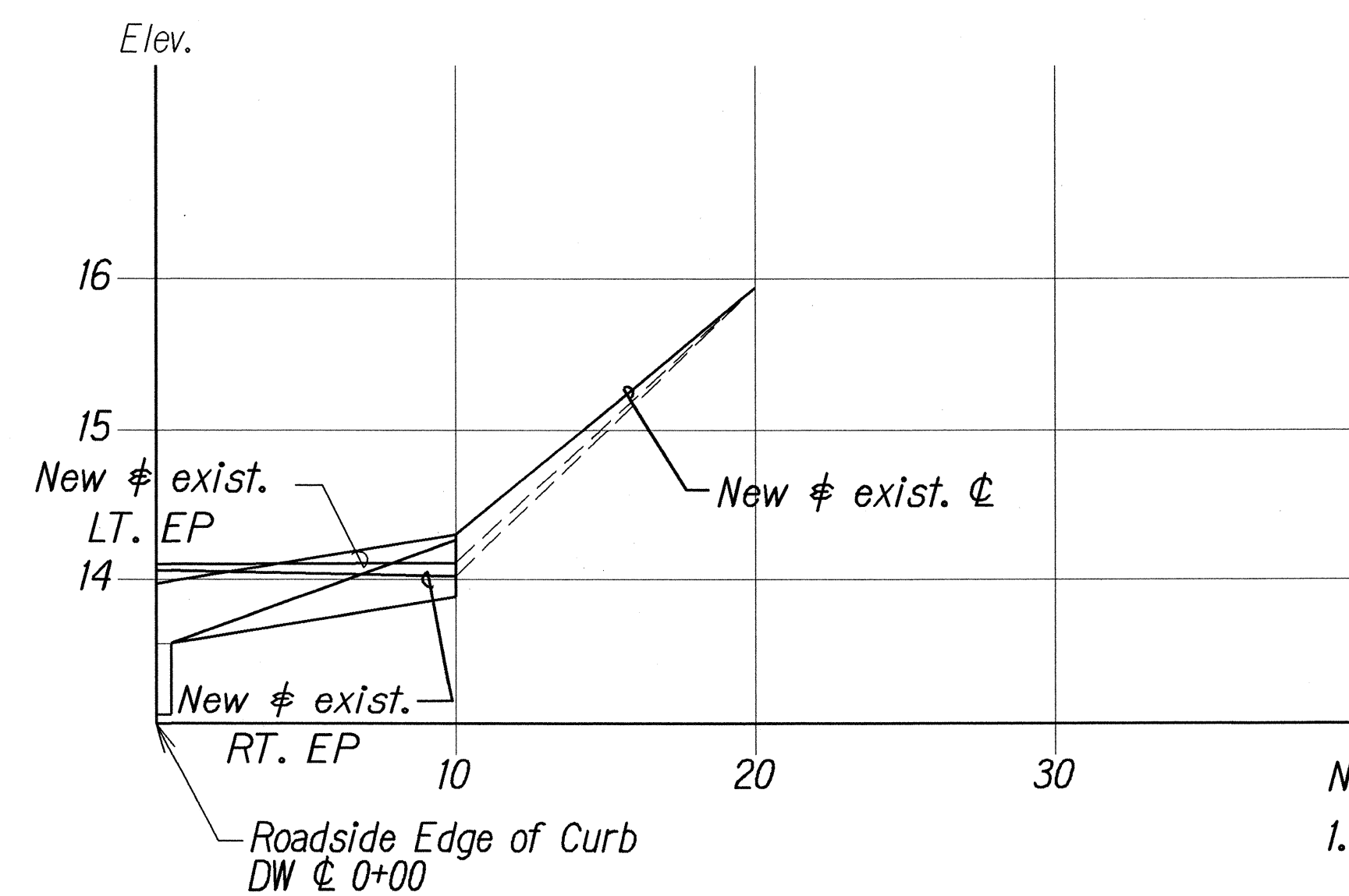
DIST.-CURB LINE TO R/W	SLOPE
3.6	17.46 to 305
3	19.05 to 305
2.4	22.22 to 305
2.1	23.81 to 305
1.8	26.98 to 305
0.9	49.21 to 305

11/24/03 Deleted 2 1/2" Galv. or P.V.C. Pipe Sleeve

DATE	REVISION
	STATE OF HAWAII DEPARTMENT OF TRANSPORTATION HIGHWAYS DIVISION <b>DRIVEWAY DETAILS</b> FARRINGTON HIGHWAY DRAINAGE IMPROVEMENTS Vicinity of Nanakuli Avenue to Nanakuli Stream and Vicinity of Lualei Place to Princess Kahanu Avenue Project Nos. 93A-01-01 & 93A-02-01 Scale: As Shown Date: August, 2002 SHEET No. 3 OF 5 SHEETS



Farrington Highway  
New Driveway @ Sta. 172+34  
Scale: 1"=5'



Driveway Profile Adjustment  
@ Sta. 172+34  
Scale: Horizontal: 1"=5'  
Vertical: 1"=1'

DW @ Sta.  
NOTES:

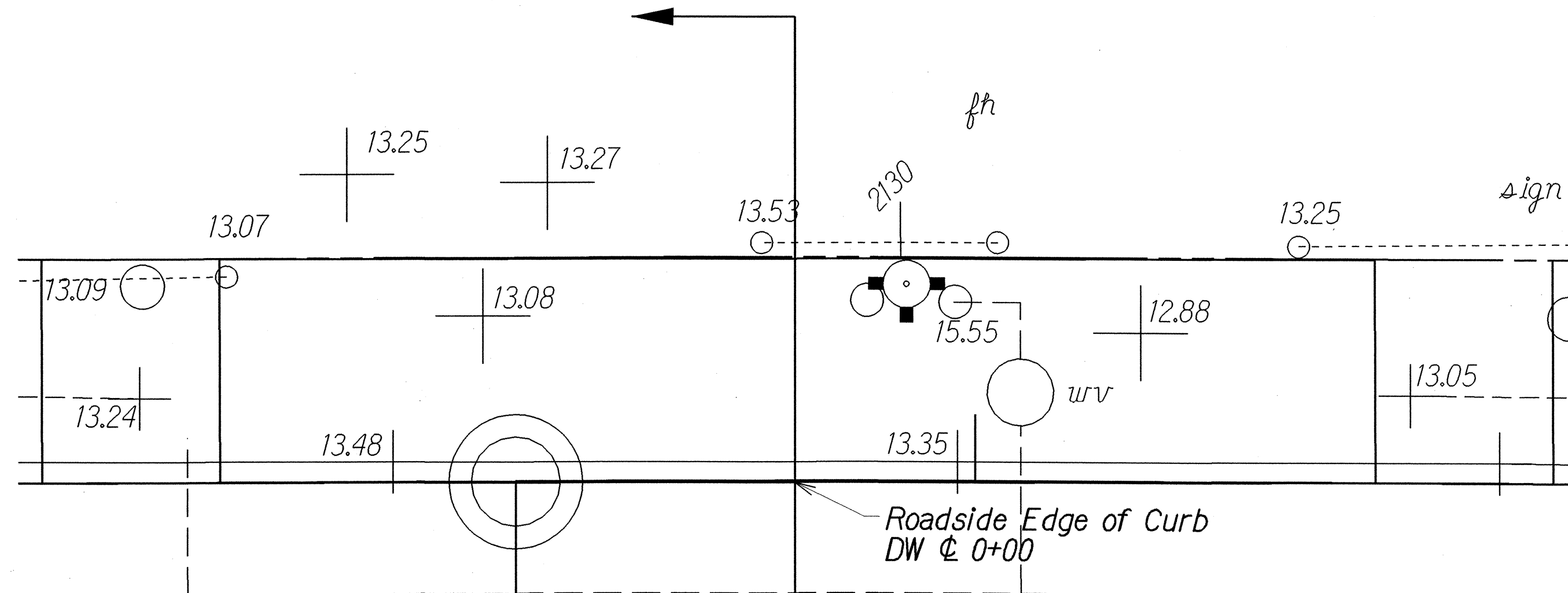
- All standards set forth in "State DOT Curb Ramp and Sidewalk Design Guidelines, Notes, and Details" dated 1/31/02 or latest edition be followed in the construction of all driveways.
- Where driveways connect to sidewalks, a minimum 36" wide route with a 2% max cross slope shall be provided.

DATE	_____
SURVEY PLOTTED BY	_____
DRAWN BY	_____
TRACED BY	_____
CHECKED BY	_____
QUANTITIES BY	_____
ORIGINAL PLAN	_____
NOTE BOOK	_____
CHECKED BY	_____

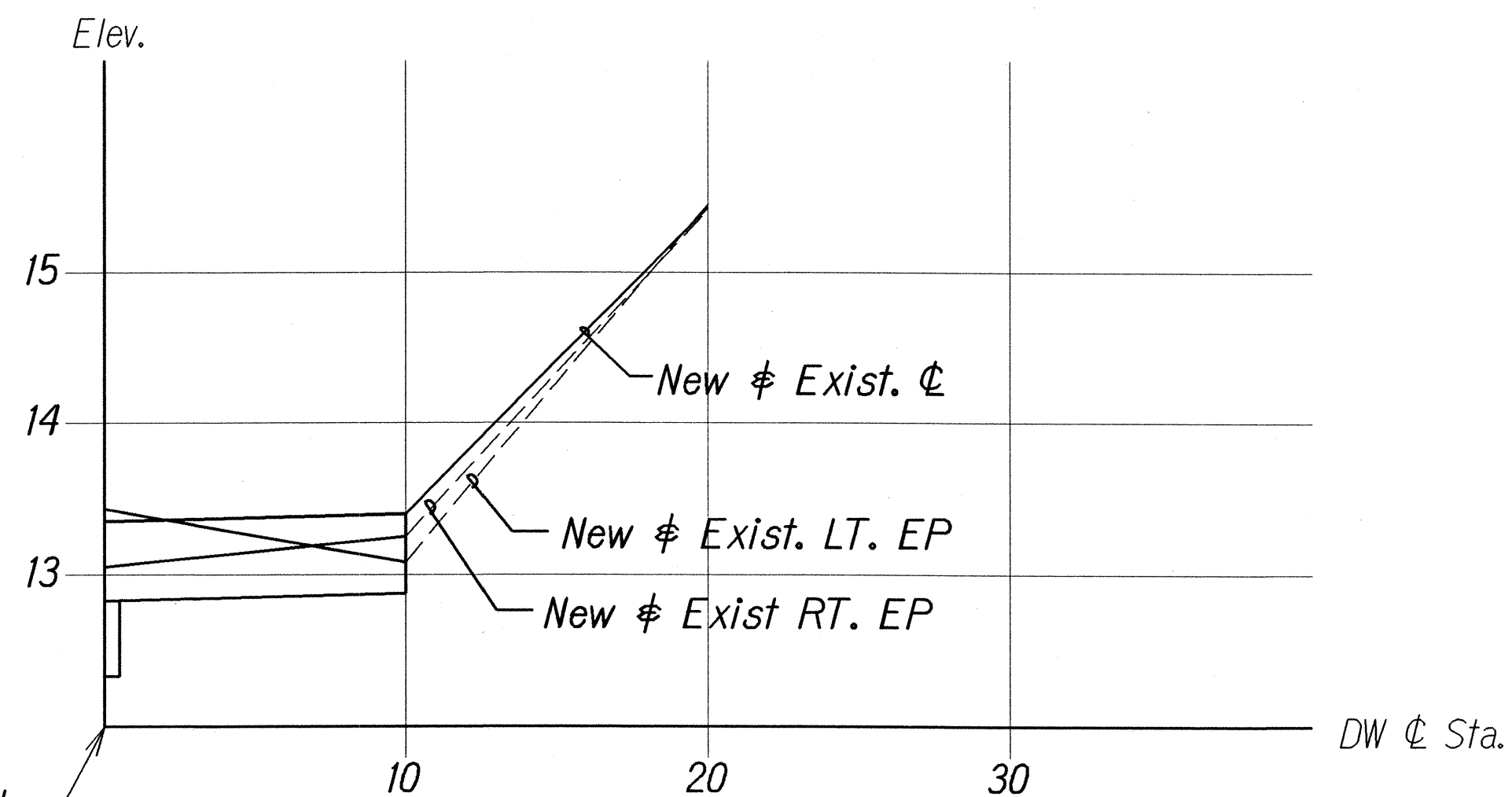


FED. ROAD DIST. NO.	STATE	PROJ. NO.	FISCAL YEAR	SHEET NO.	TOTAL SHEETS
HAWAII	HAW.	93A-01-01 93A-02-01	2004	13	48

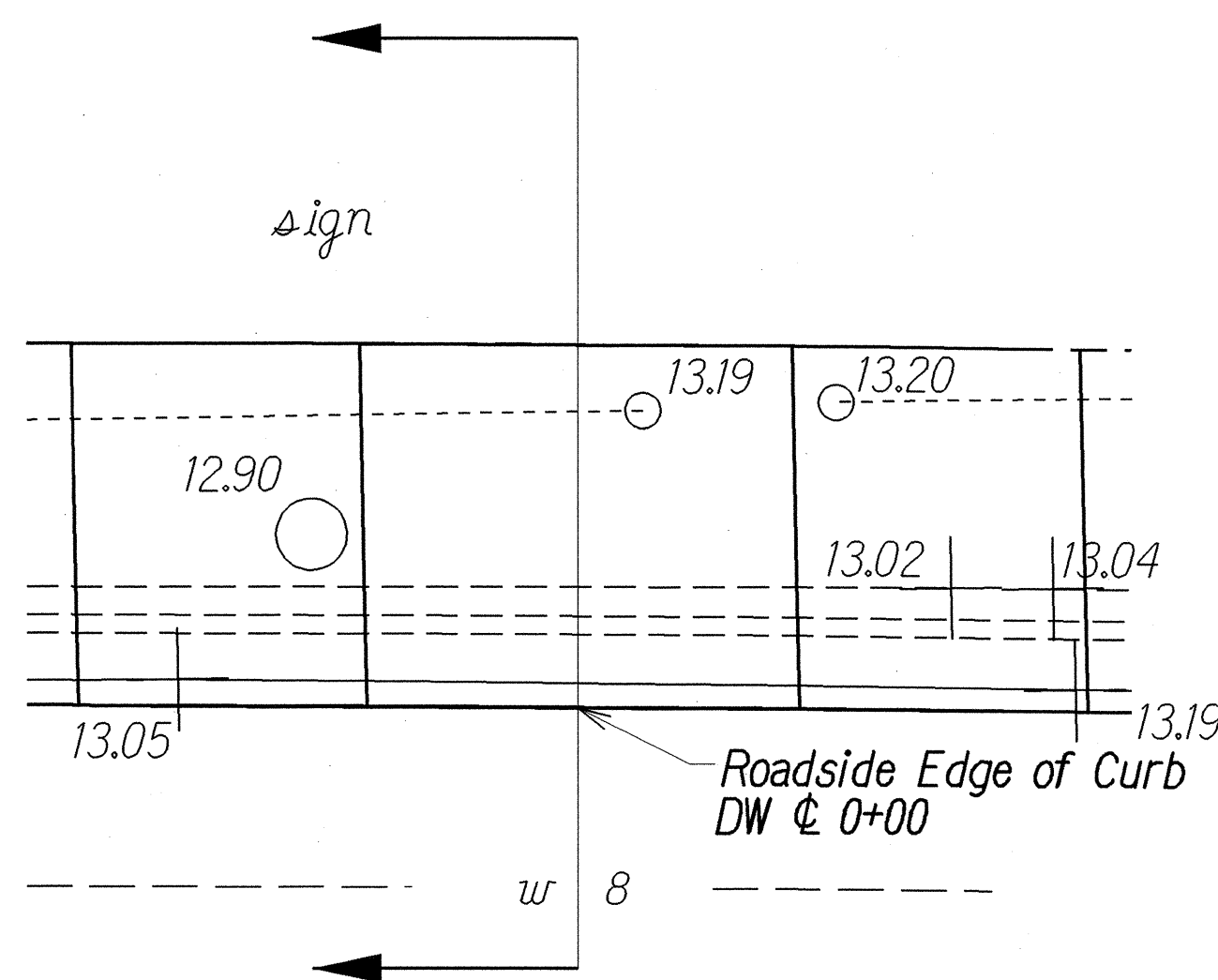
Note:  
Fire Hydrant to Relocated.  
For Waterline Relocation  
Details, See Plan Sheet  
No. 43, 44, & 45.



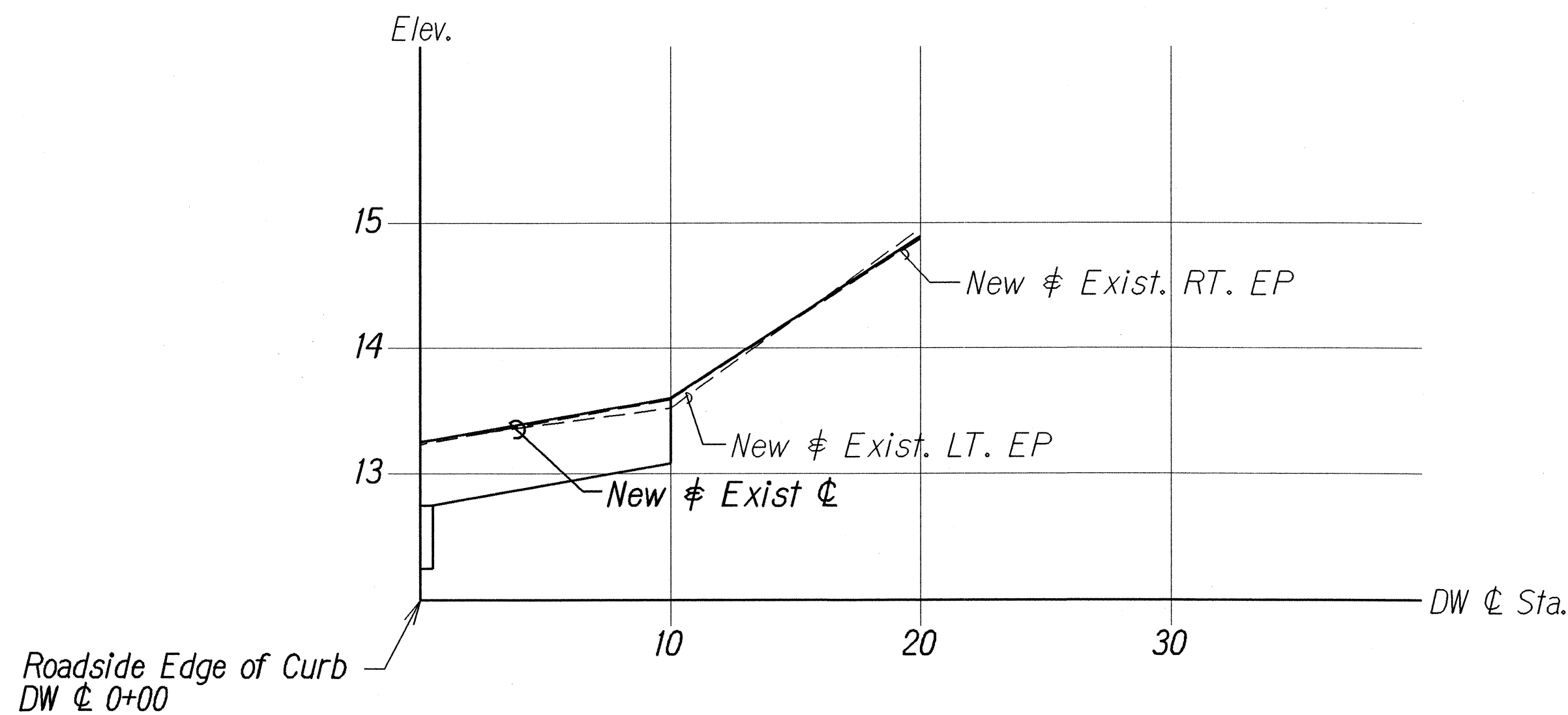
Farrington Highway  
New Driveway @ Sta. 173+95  
Scale: 1"=5'



Driveway Profile Adjustment  
@ Sta. 173+95  
Scale: Horizontal: 1"=5'  
Vertical: 1"=1'



Farrington Highway  
New Driveway @ Sta. 175+35  
Scale: 1"=5'



Driveway Profile Adjustment  
@ Sta. 175+35  
Scale: Horizontal: 1"=5'  
Vertical: 1"=1'

STATE OF HAWAII  
DEPARTMENT OF TRANSPORTATION  
HIGHWAYS DIVISION

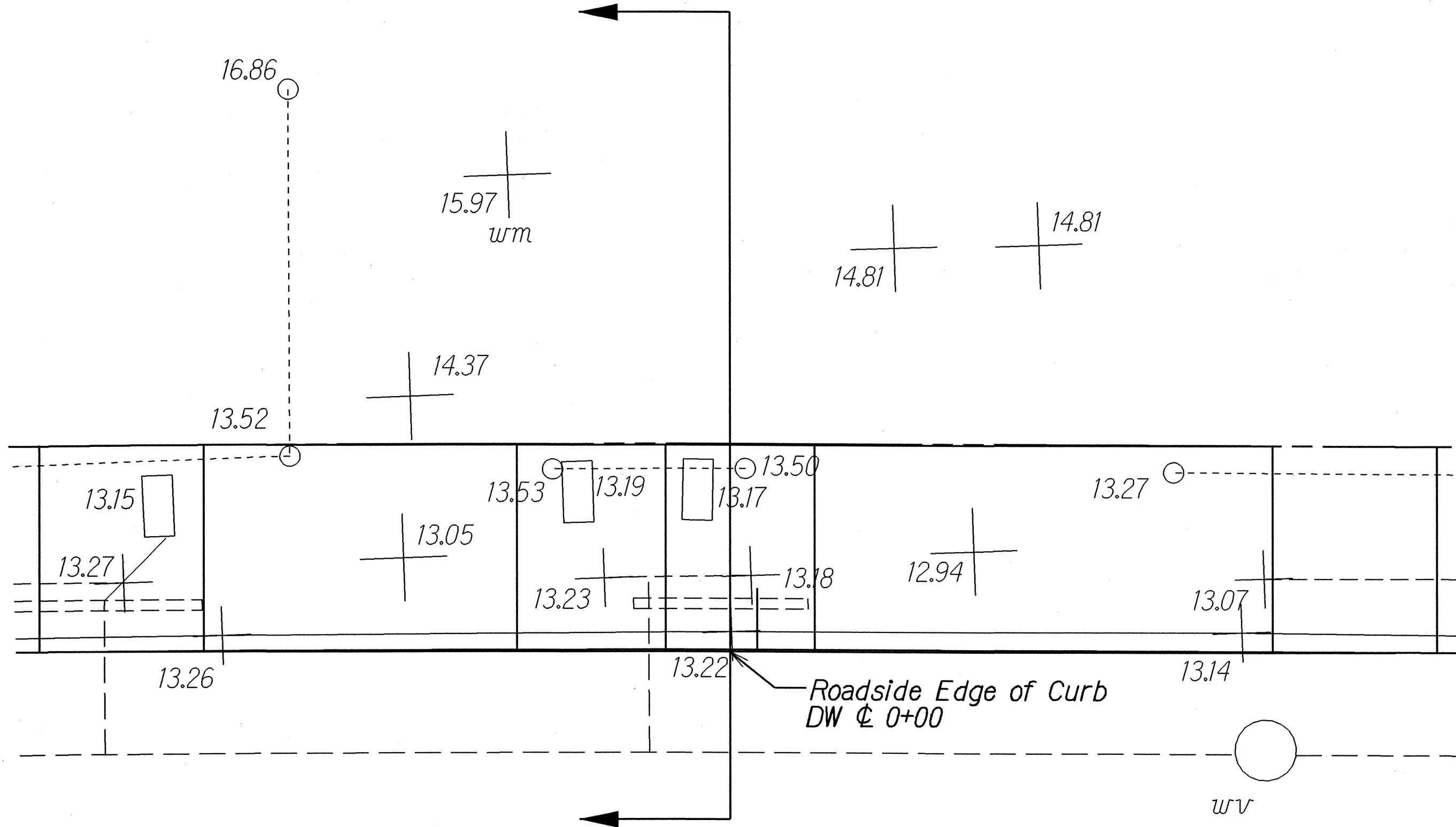
**DRIVEWAY DETAILS**

FARRINGTON HIGHWAY DRAINAGE IMPROVEMENTS  
Vicinity of Nanakuli Avenue to Nanakuli Stream and  
Vicinity of Lualei Place to Princess Kahanu Avenue

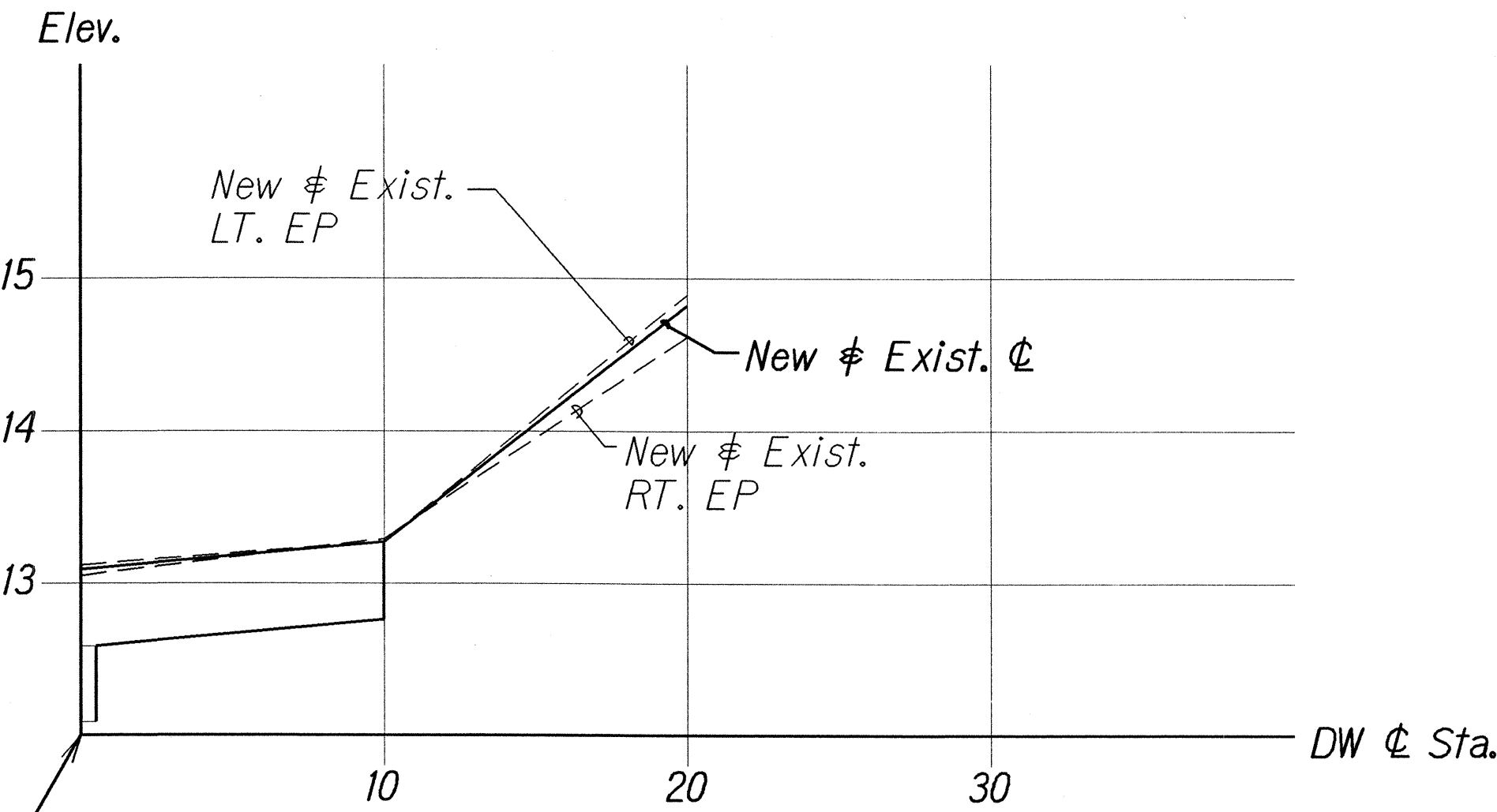
Project Nos. 93A-01-01 & 93A-02-01  
Scale: As Shown Date: Oct., 2001

SHEET No. 4 OF 5 SHEETS

FED. ROAD DIST. NO.	STATE	PROJ. NO.	FISCAL YEAR	SHEET NO.	TOTAL SHEETS
HAWAII	HAW.	93A-01-01 93A-02-01	2004	14	48



Farrington Highway  
New Driveway @ Sta. 176+00  
 Scale: 1"=5'



Driveway Profile Adjustment  
@ Sta. 176+00  
 Scale: Horizontal: 1"=5'  
 Vertical: 1"=1'

ORIGINAL PLAN	SURVEY PLOTTED BY	DATE
NOTE BOOK	DRAWN BY	
	TRACED BY	
	CHECKED BY	
	QUANTITIES BY	
	CHECKED BY	

STATE OF HAWAII  
DEPARTMENT OF TRANSPORTATION  
HIGHWAYS DIVISION

**DRIVEWAY DETAILS**  
FARRINGTON HIGHWAY DRAINAGE IMPROVEMENTS  
Vicinity of Nanakuli Avenue to Nanakuli Stream and  
Vicinity of Lualei Place to Princess Kahanu Avenue  
Project Nos. 93A-01-01 & 93A-02-01  
Scale: As Shown Date: Oct., 2001

SHEET No. 5 OF 5 SHEETS