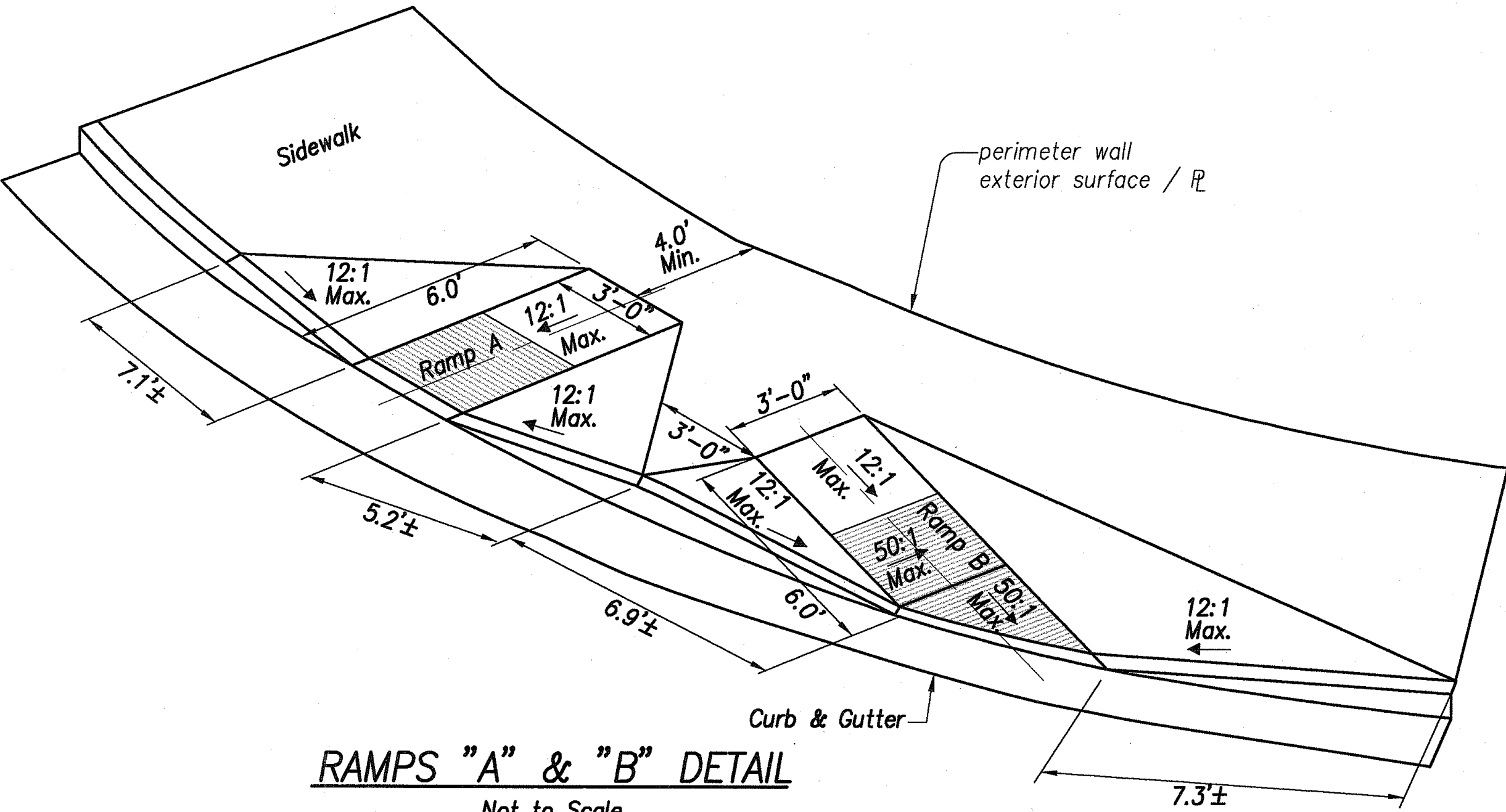
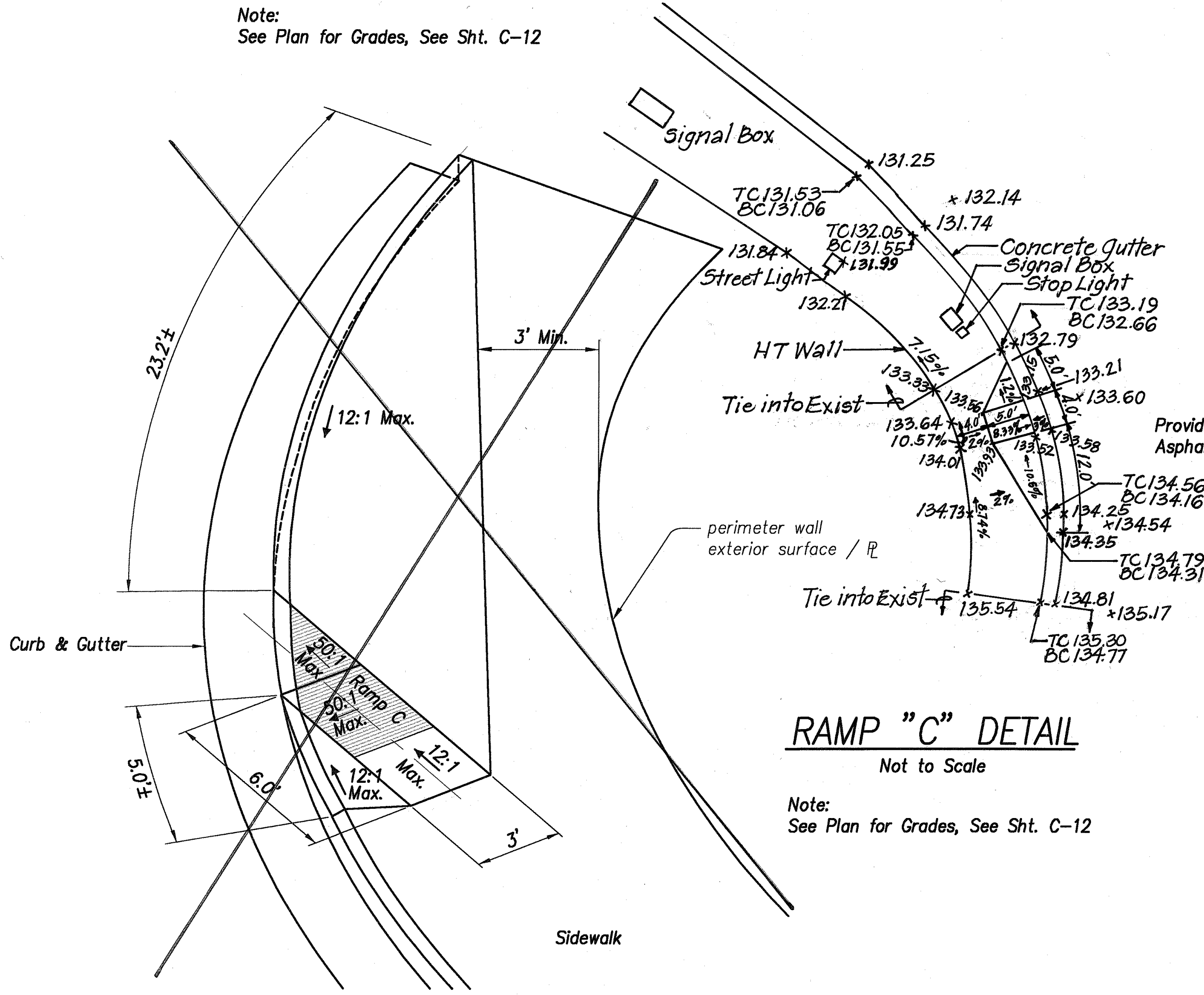


FED. ROAD DIST. NO.	STATE	PROJ. NO.	FISCAL YEAR	SHEET NO.	TOTAL SHEETS
HAWAII	HAW.	93A-06-98	2001	9	68



RAMPS "A" & "B" DETAIL
Not to Scale

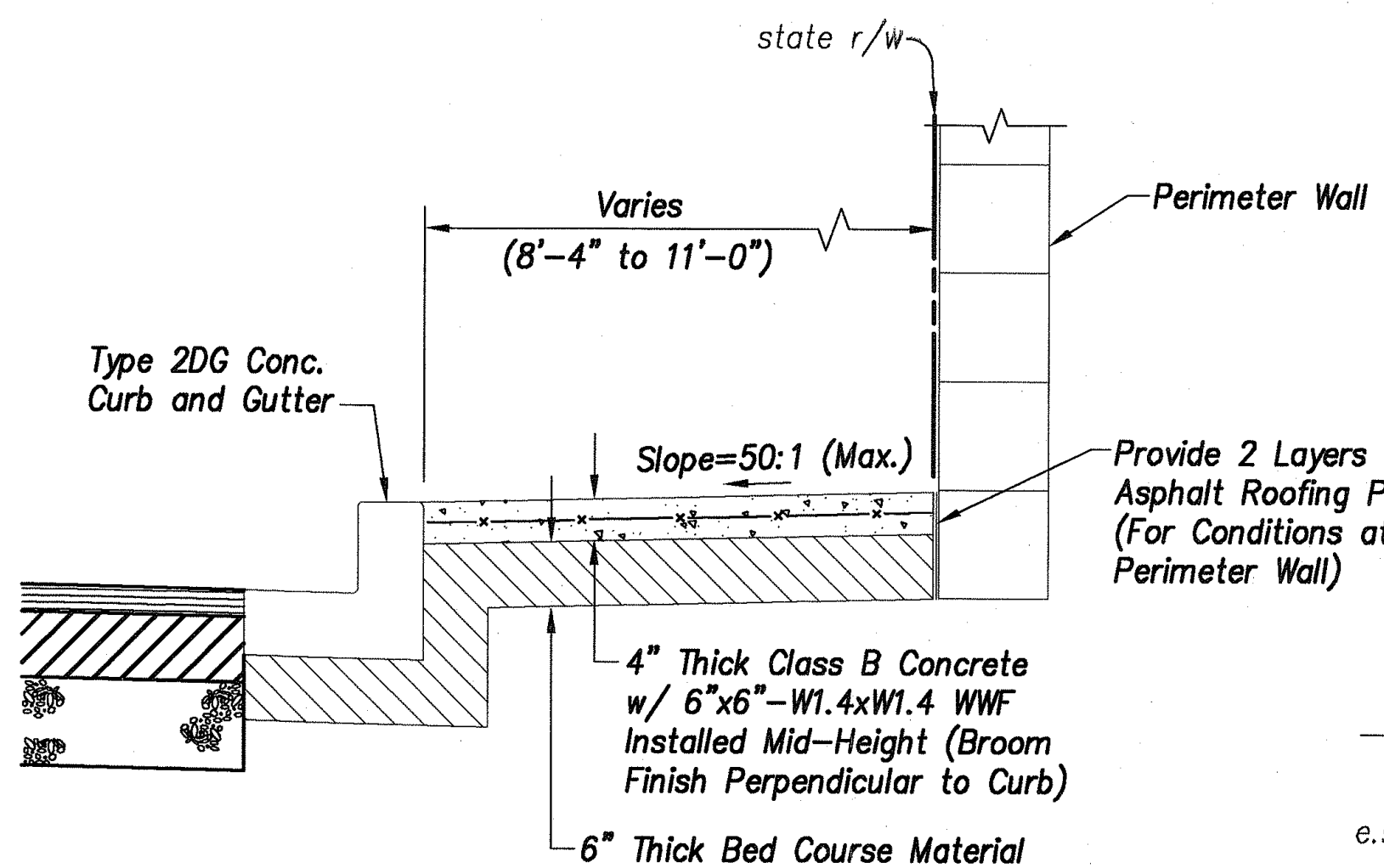
Note:
See Plan for Grades, See Sht. C-12



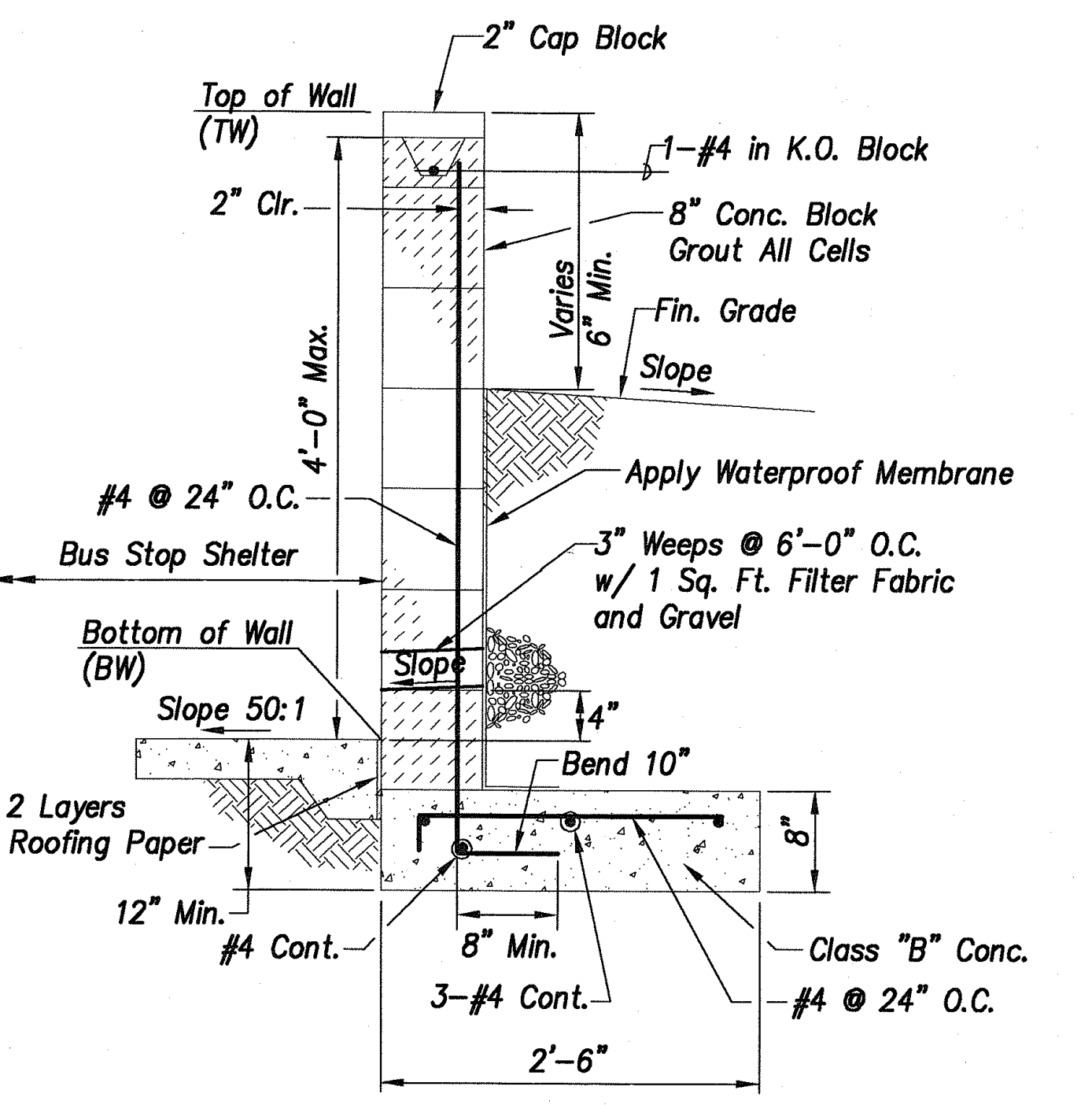
RAMP "C" DETAIL
Not to Scale

Note:
See Plan for Grades, See Sht. C-12

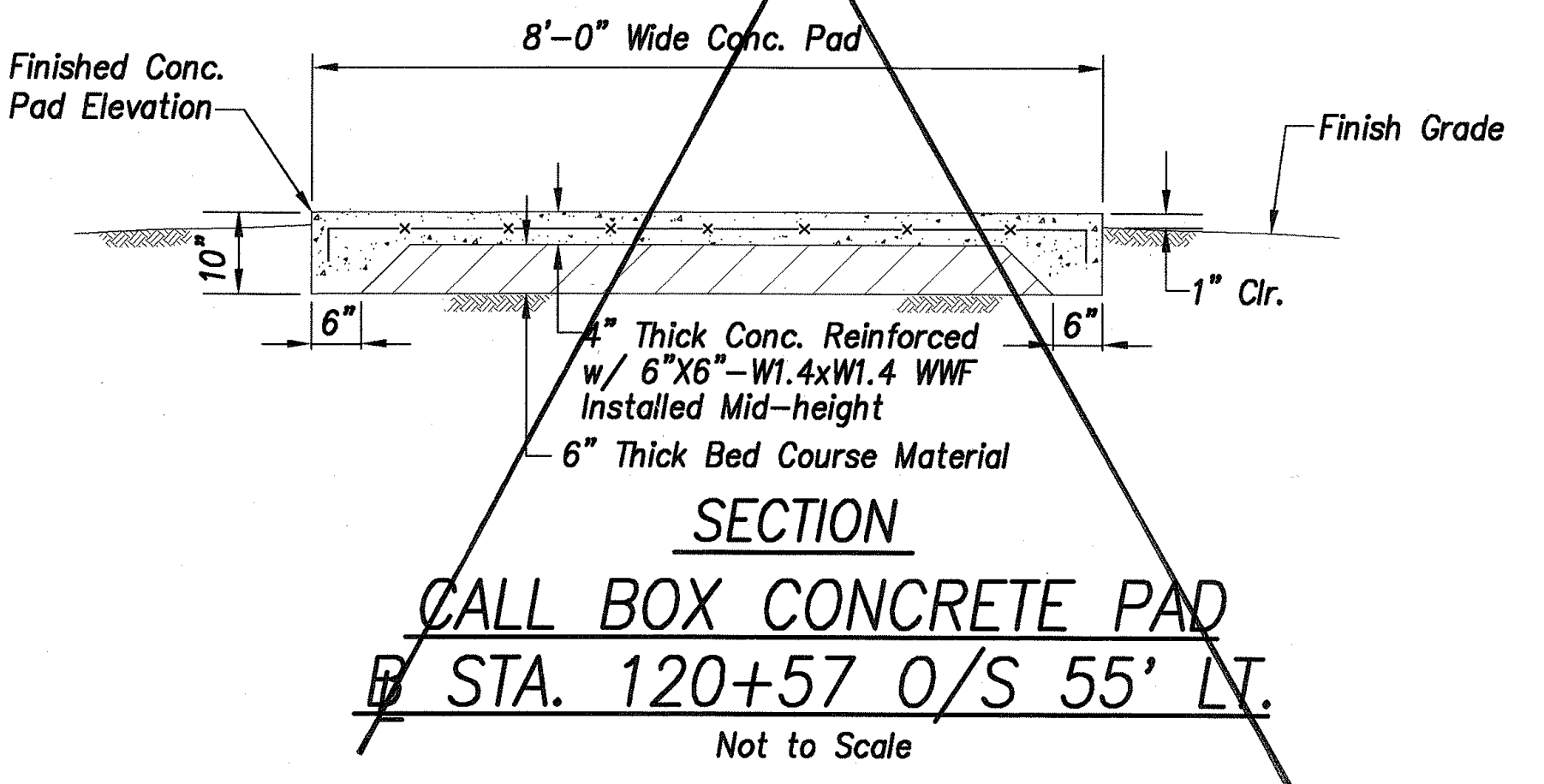
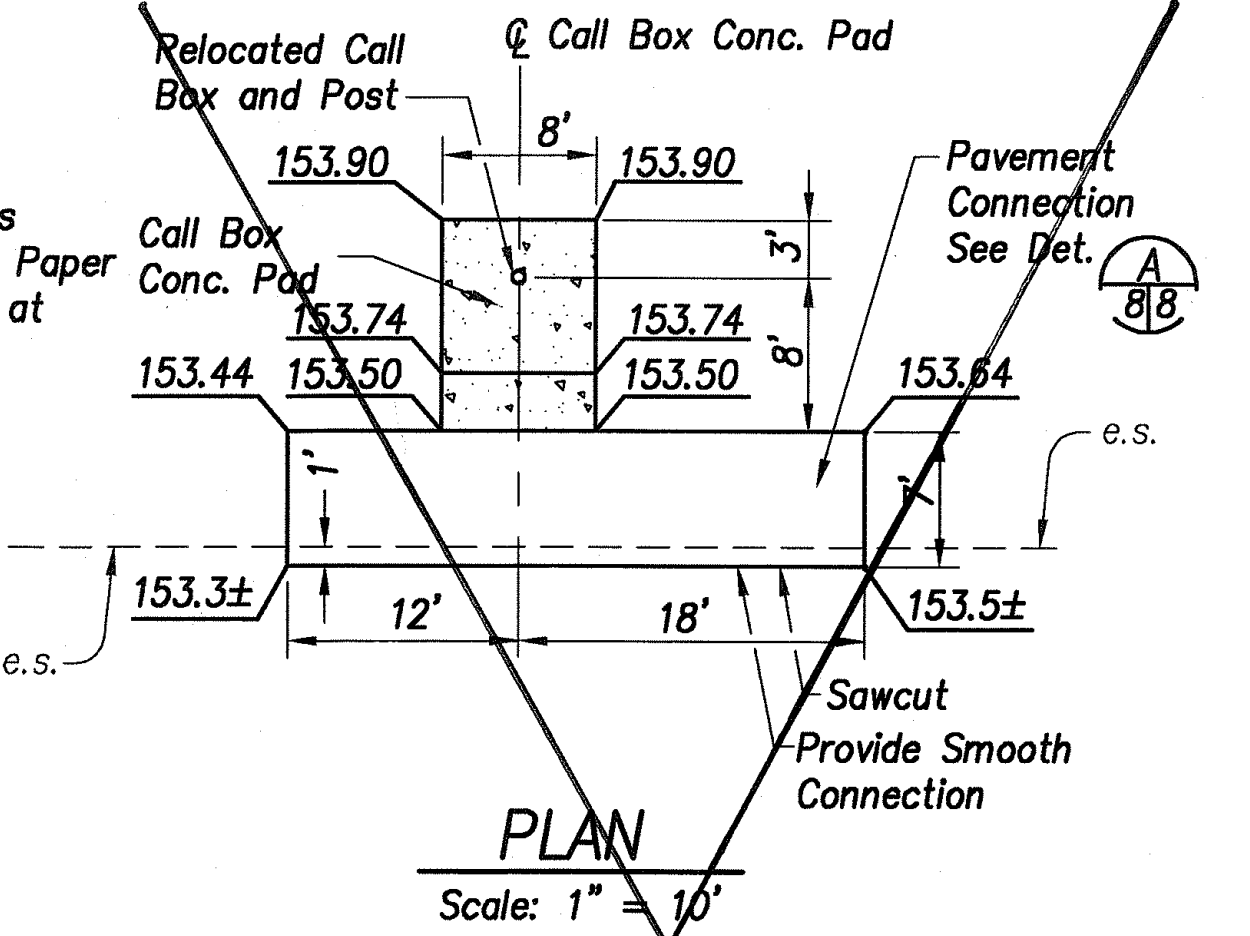
CURB RAMP - TYPE "A" MODIFIED



TYPICAL SIDEWALK SECTION
Not to Scale

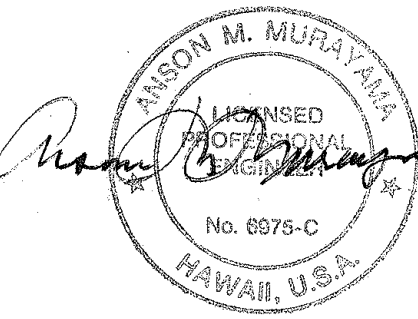


CONCRETE GRADE ADJUSTMENT WALL
Not to Scale



CALL BOX CONCRETE PAD
Not to Scale

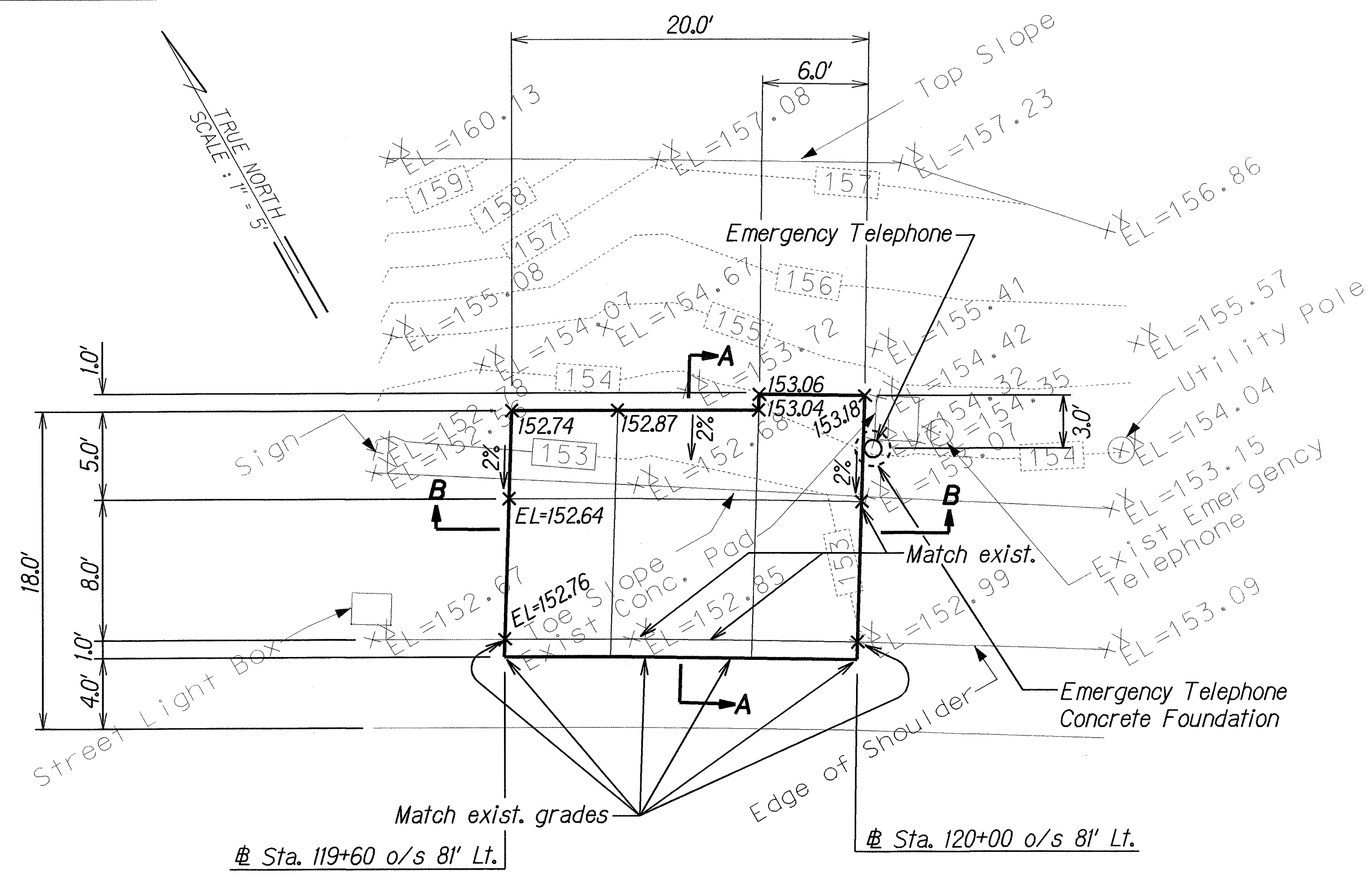
SURVEY PLOTTED BY	DATE
DRAWN BY	
DESIGNED BY	
QUANTITIES BY	
CHECKED BY	
ORIGINAL PLAN	
NOTE BOOK	
No.	



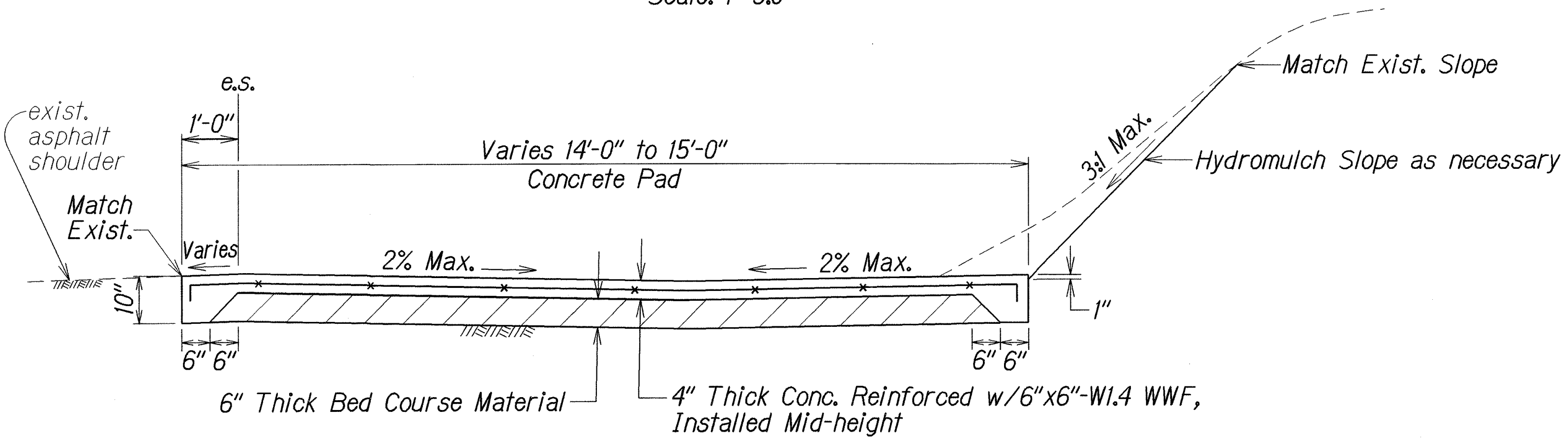
STATE OF HAWAII
DEPARTMENT OF TRANSPORTATION
HIGHWAYS DIVISION

MISCELLANEOUS DETAILS
FARRINGTON HIGHWAY
Intersection Improvements at Waiomea Street
Project No. 93A-06-98
Scale: As Shown Date: August 2000
SHEET No. C-3 OF 29 SHEETS

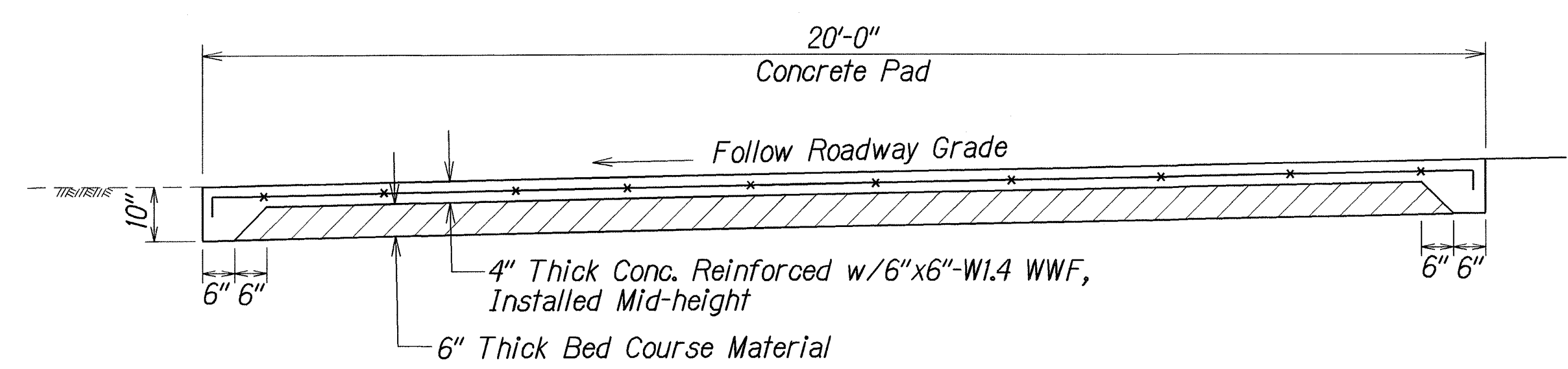
FED. ROAD DIST. NO.	STATE	PROJ. NO.	FISCAL YEAR	SHEET NO.	TOTAL SHEETS
HAWAII	HAW.	93A-06-98	1998	C.O.9 S-1	X



PLAN
Scale: 1"=5.0'



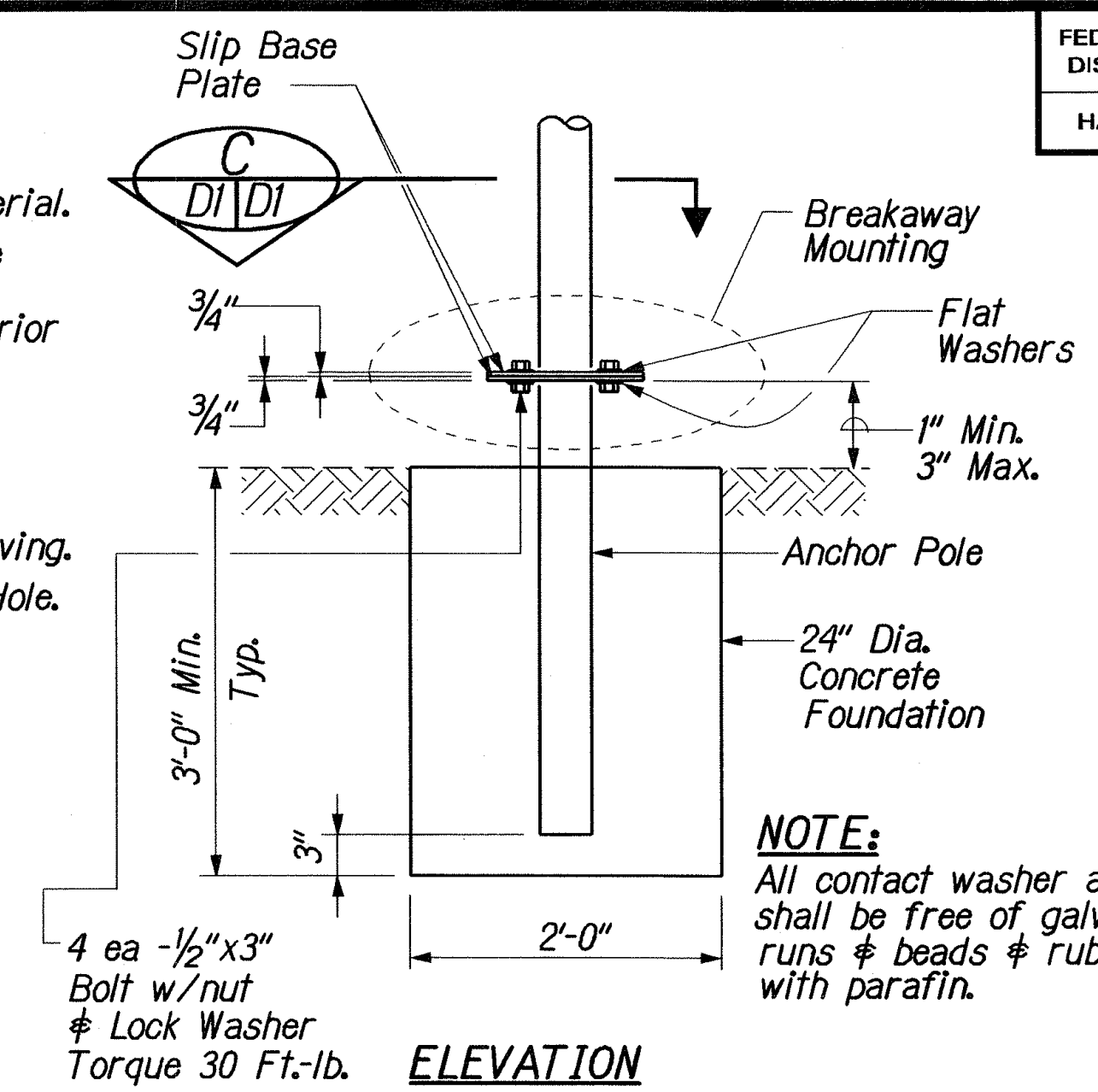
Section A-A
Not to Scale



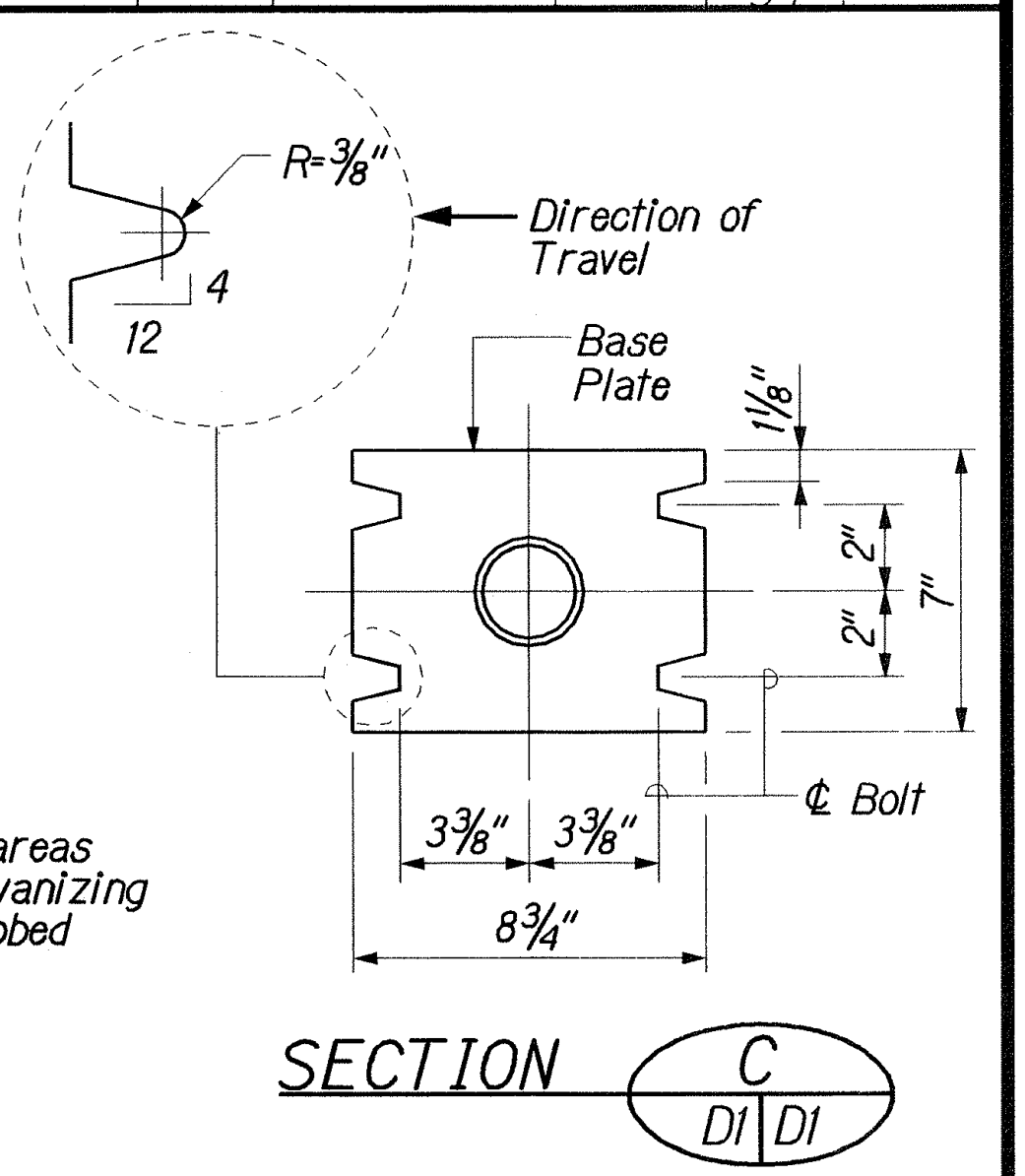
Section B-B
Not to Scale

NOTES:

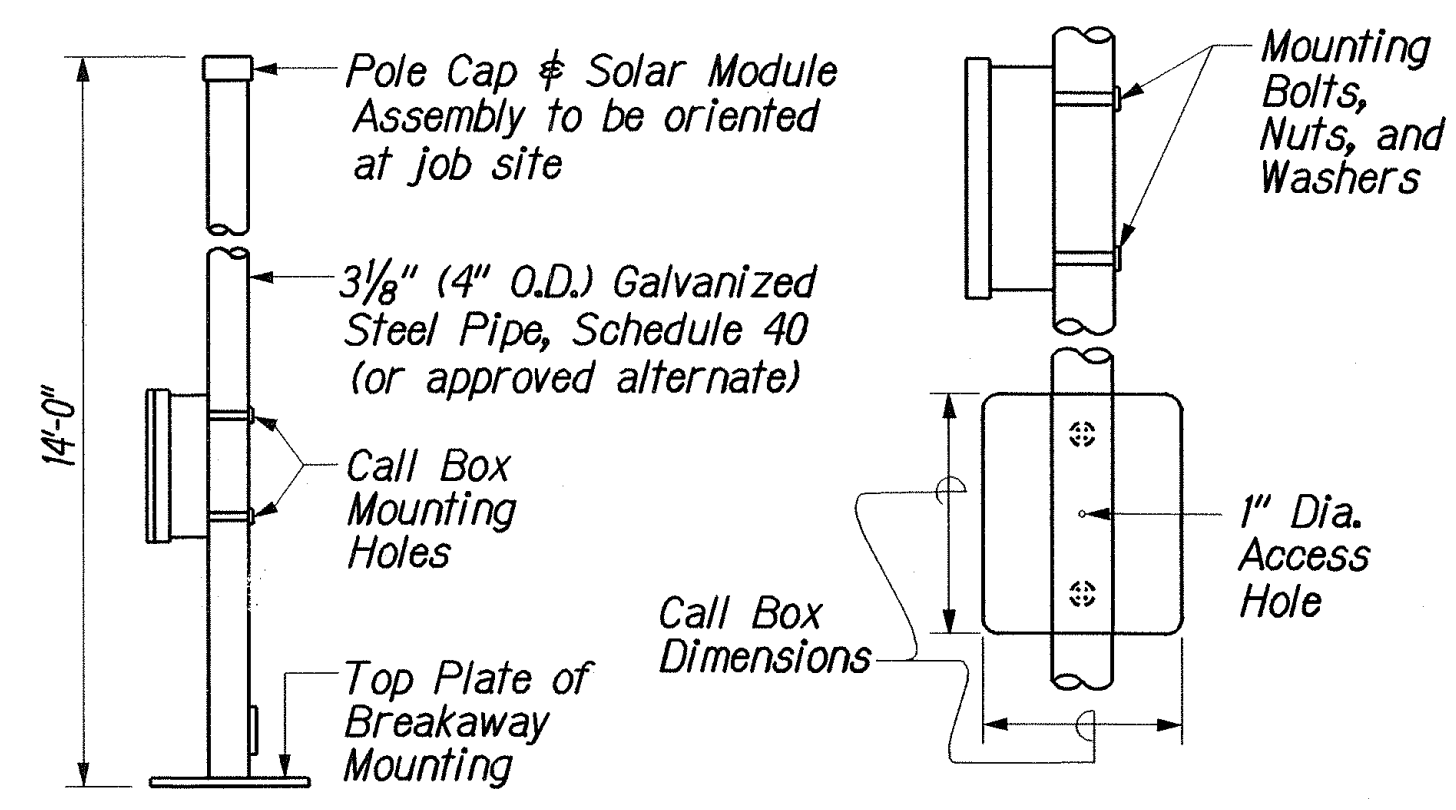
- Foundation shall be Class B concrete placed against undisturbed material.
- Backfill shall be complete and adjacent surface improvements prepared prior to erection of the post.
- 1/2-inch expansion joint material shall be placed between the foundation and abutting concrete paving.
- CIDH - Cast in Drilled Hole.
- Location of call box unit shall be based on the direction of Traffic.
- Emergency telephone handset reach shall be no more than 10'.



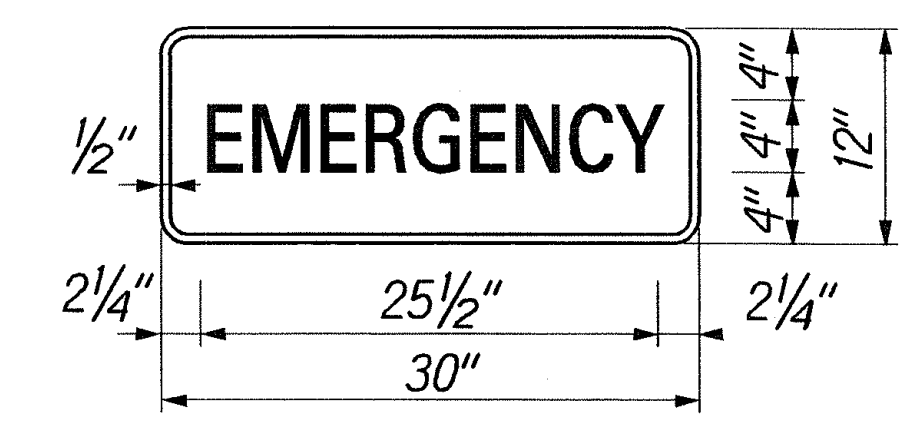
CIDH CONCRETE FOUNDATION WITH BREAKAWAY MOUNTING
Not To Scale



SECTION C-D



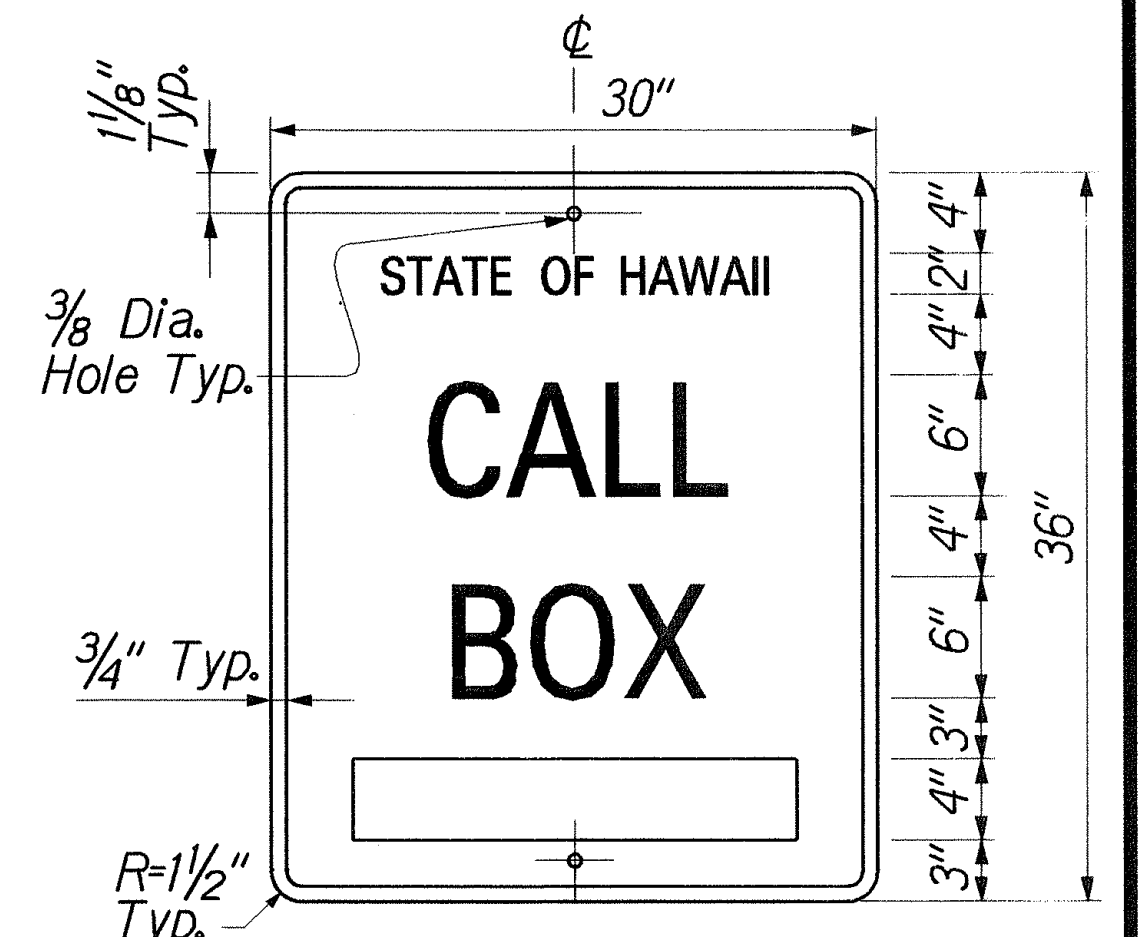
CALL BOX MOUNTING POLE, TYPICAL
Not To Scale



EMERGENCY SIGN
Not To Scale

NOTES:

- Lettering shall be centered and shall be 4" SERIES C letters.
- All signs shall have white reflector border and legend on a blue reflectorized background.



CALL BOX IDENTIFICATION SIGN
Not To Scale

NOTES:

- All lines of lettering shall be centered and shall be the following lettering size and series:
Line No. 1 - 2" SERIES C
Line No. 2 - 6" SERIES E
Line No. 3 - 6" SERIES E
- Call Box Identification Numbers shall be 4" SERIES D letters centered in the bottom position of the sign.
- All signs shall have white reflectorized border and legend on a blue reflectorized background.
- Modify hole locations to accommodate the 2' offset from edge of shoulder.

SURVEY PLOTTED BY	DATE
DRAWN BY	10/21/02
DESIGNED BY	
CHECKED BY	
NOTE	
QUANTITIES BY	
CHECKED BY	

10/21/02	Adding this sheet to original contract.
DATE	REVISION

STATE OF HAWAII
DEPARTMENT OF TRANSPORTATION
HIGHWAYS DIVISION

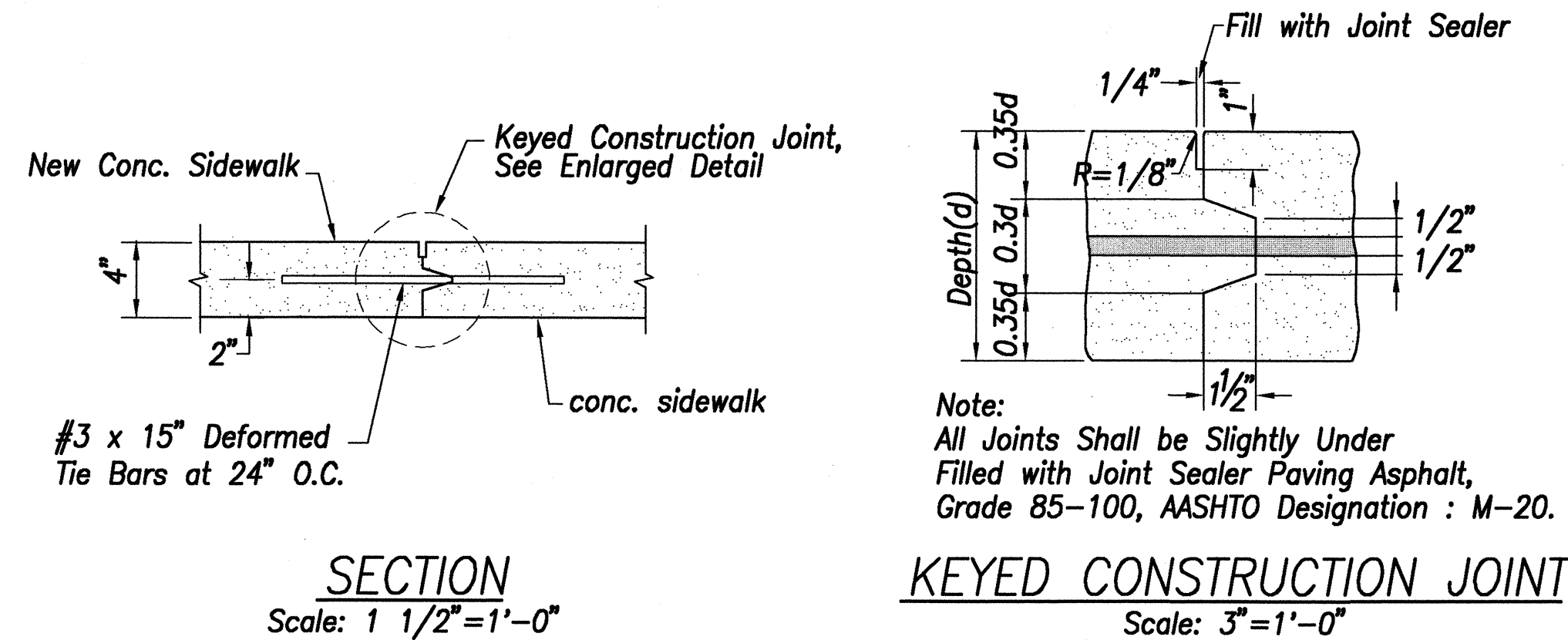
EMERGENCY TELEPHONE DETAILS

FARRINGTON HIGHWAY
Intersection Improvements at Waiomea St.
Project No. 93A-06-98

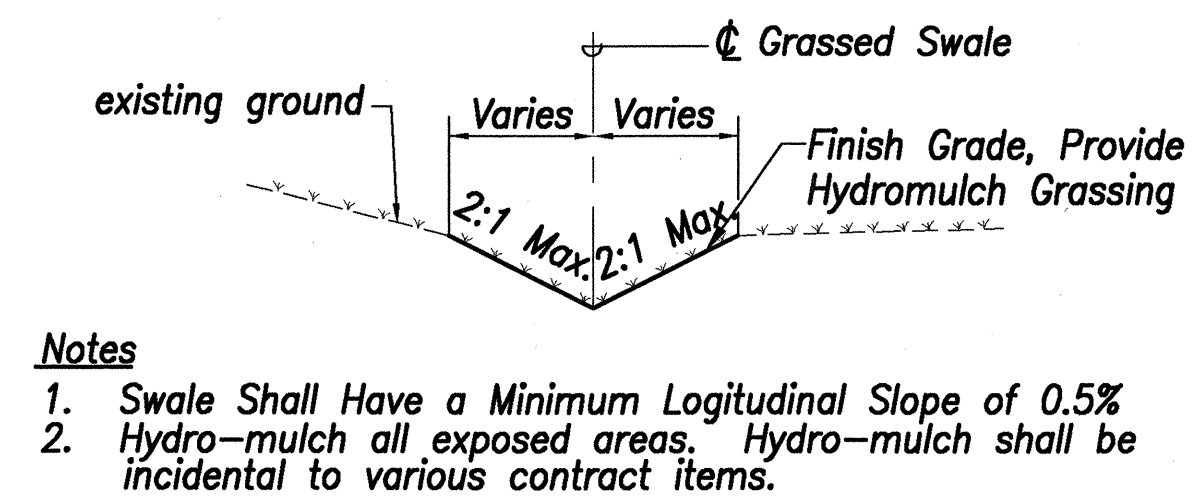
Scale: As Noted Date: Oct. 2002

SHEET No. C-3 OF 29 SHEETS

FED. ROAD DIST. NO.	STATE	PROJ. NO.	FISCAL YEAR	SHEET NO.	TOTAL SHEETS
HAWAII	HAW.	93A-06-98	2001	10	68

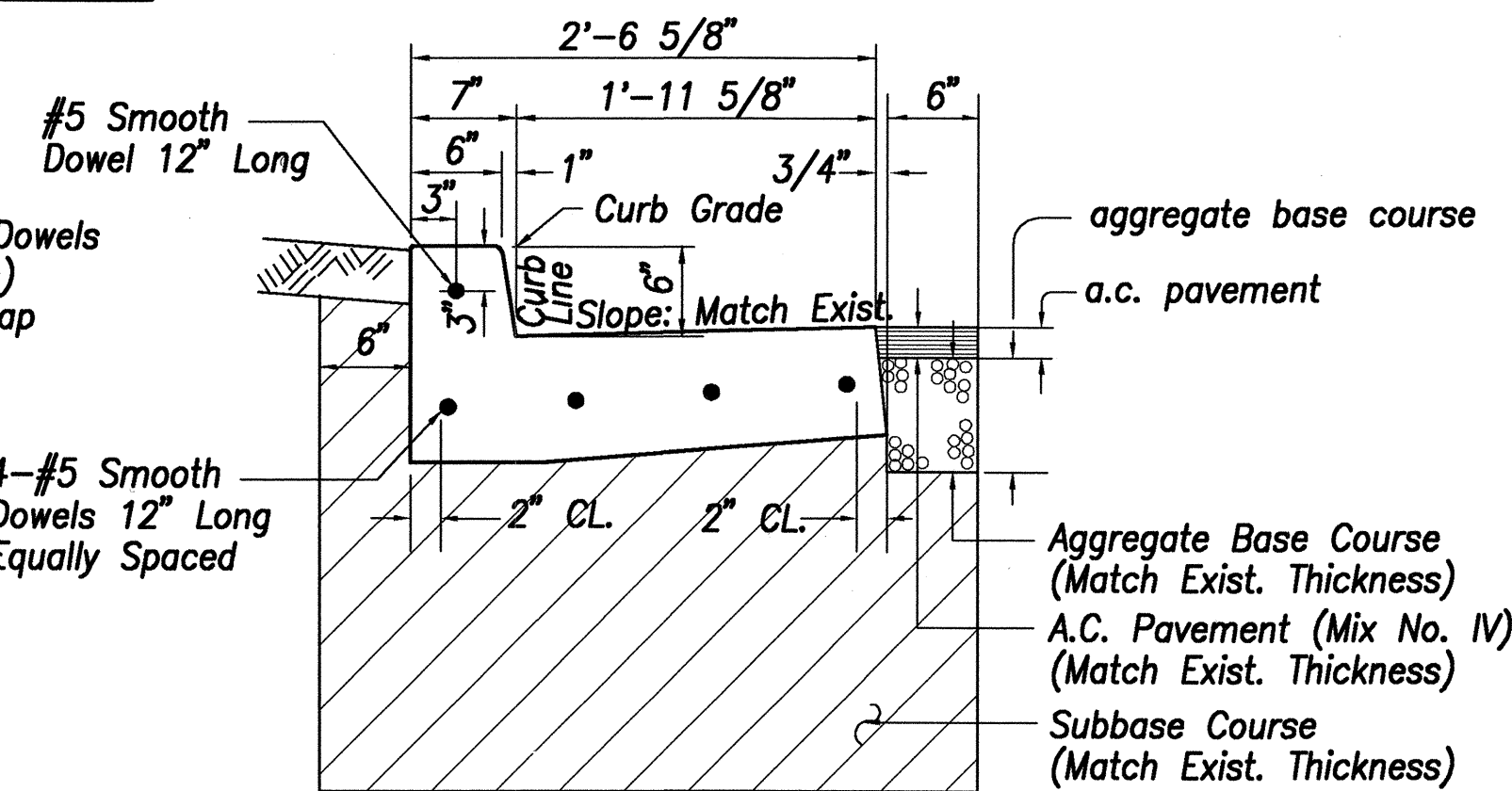
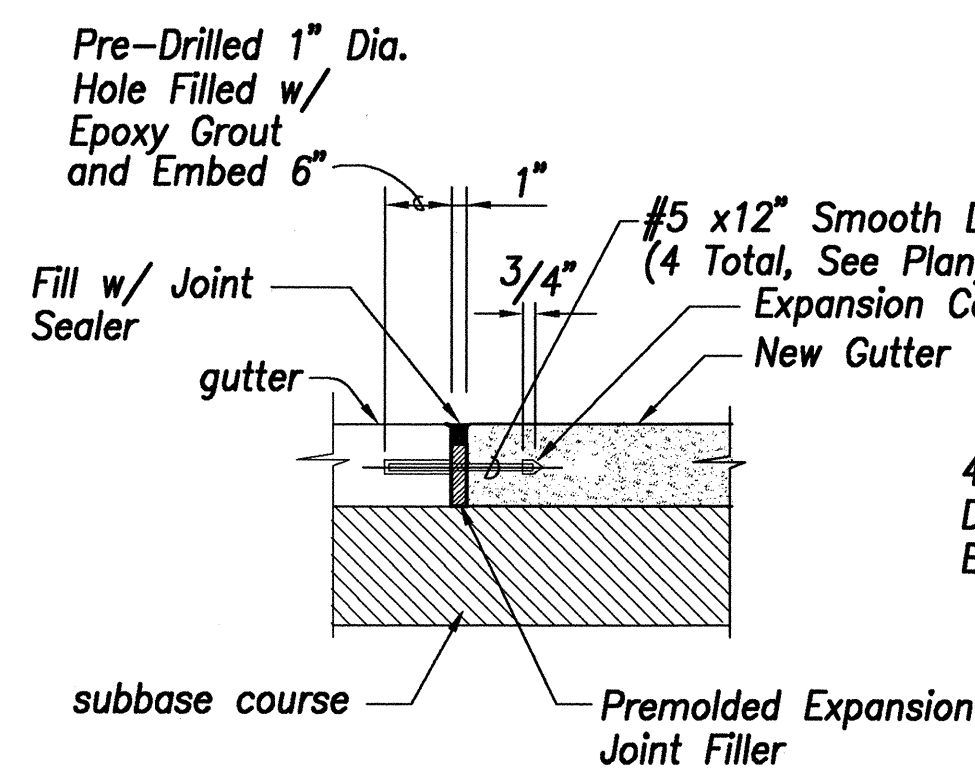
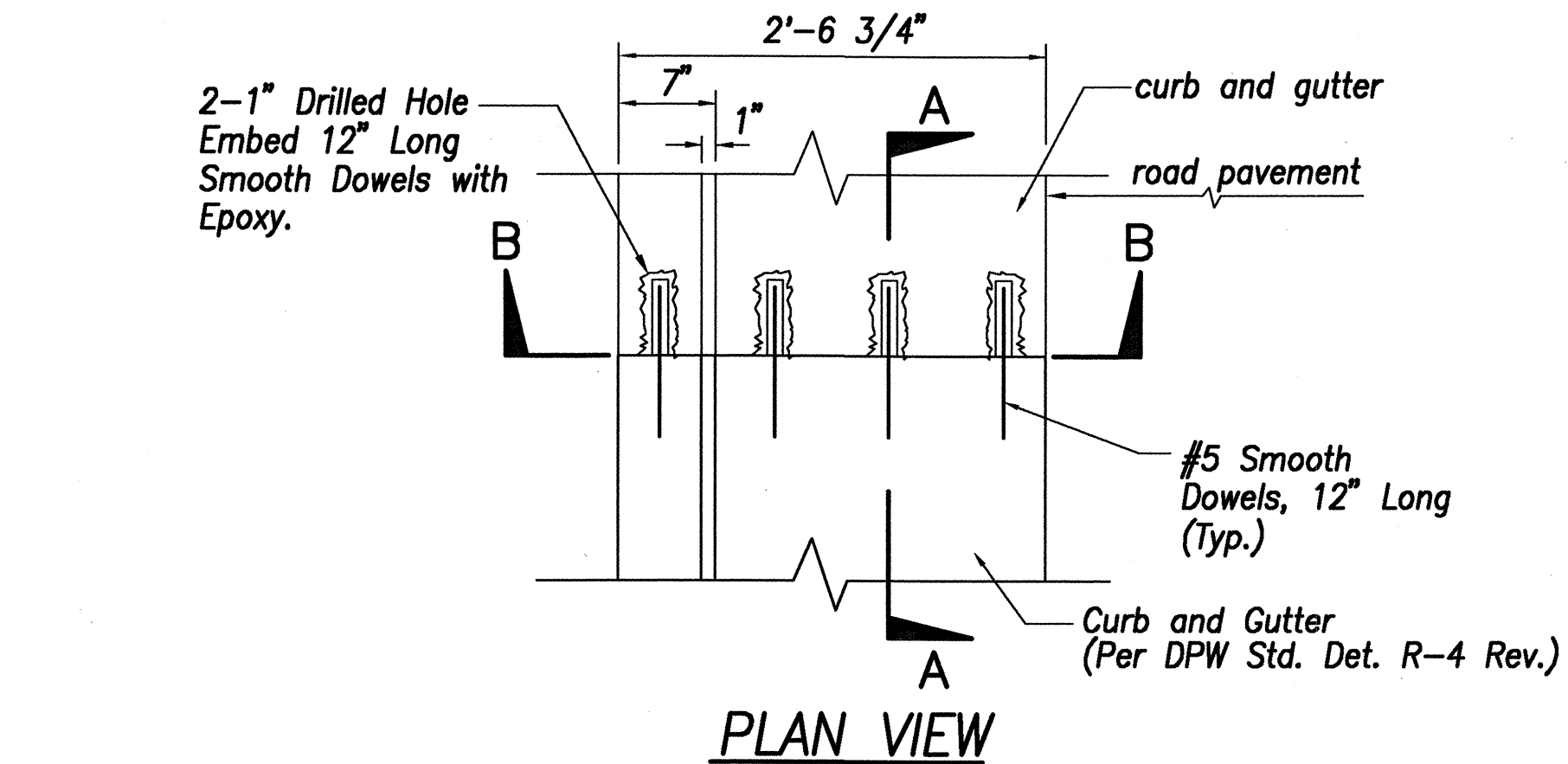


TYPICAL SIDEWALK CONNECTION (CITY)
Scale: As Shown

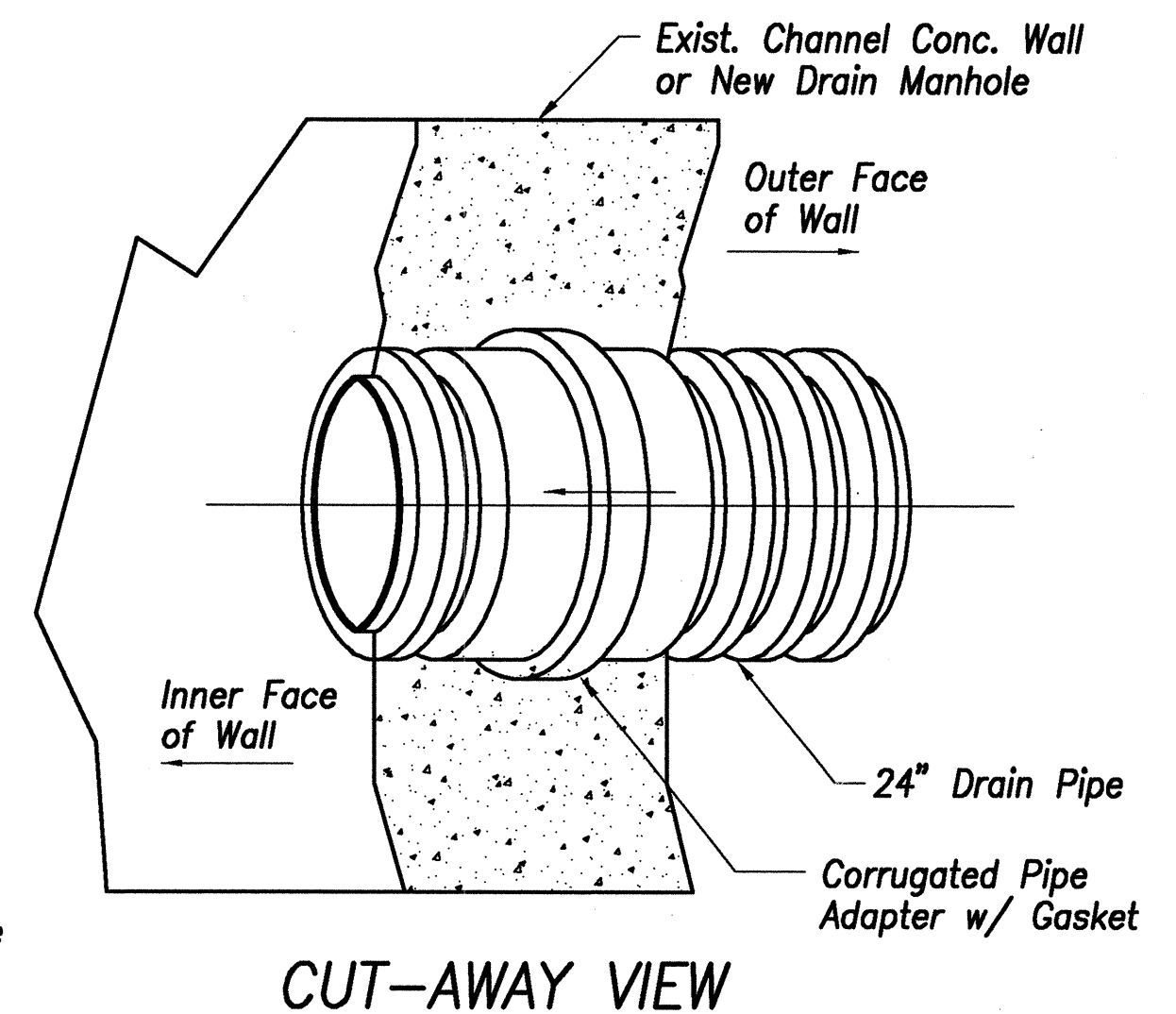


GRASSED SWALE
Not to Scale

SWALE DETAILS



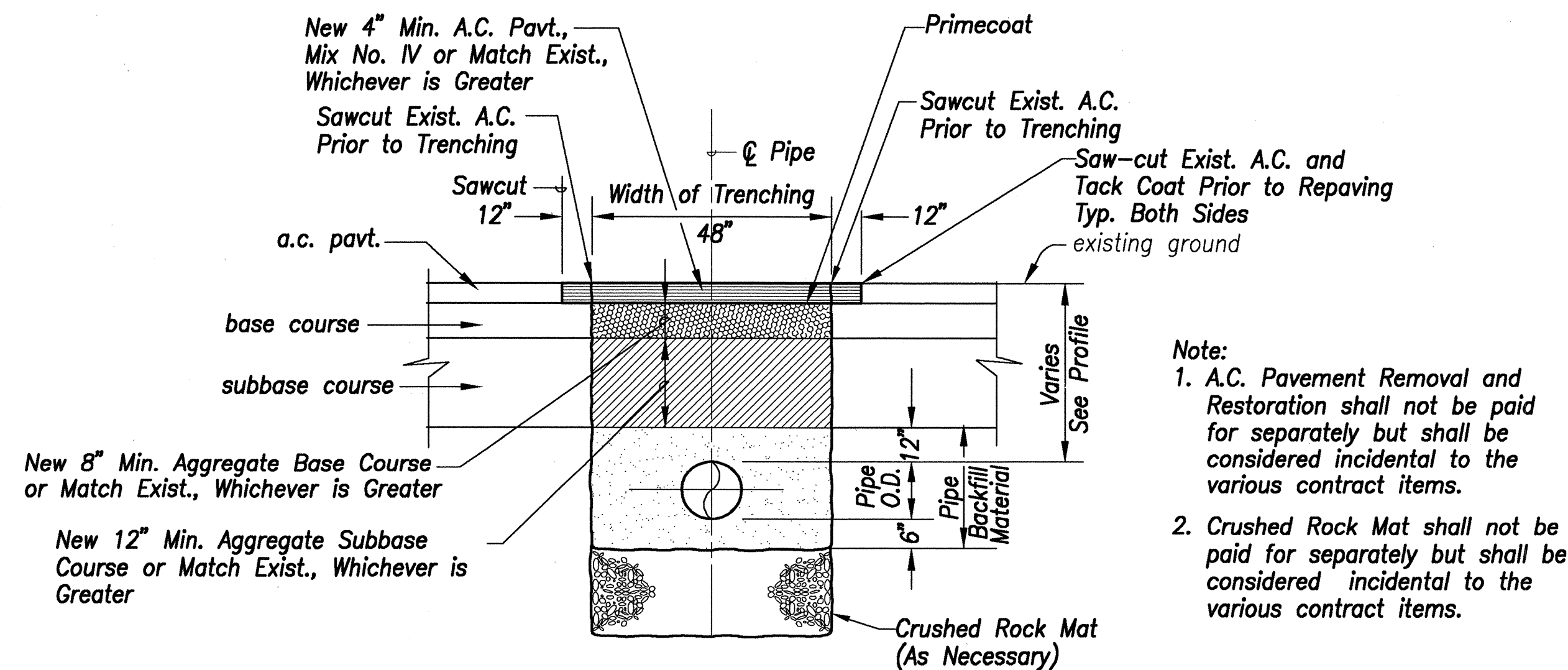
TYPICAL RESTORATION OF EXIST. CURB & GUTTER CONNECTION (CITY)
Scale: 1" = 1'-0"



ADDITIONAL REINFORCEMENT DETAIL

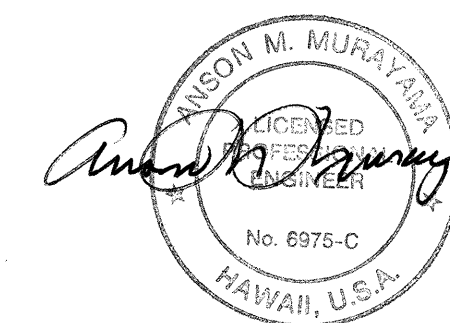
- Notes: For Pipe Penetration on Existing Wall
1. Break into Existing Wall Without Damaging Reinforcement and Cut Exposed Reinforcement as Required.
 2. Expose, Cut and Bend Existing Horiz. and Vert. Reinf. Bars Around New Pipe Penetration.
 3. Diameter of Added Reinf. Bars to be Greater Than or Equal to Existing Reinf. Bars Replaced.
 4. Shore Existing Channel Wall Prior to Sawcutting and for 10 Days After Placing Concrete.

PIPE PENETRATION THRU WALL
Not to Scale



TYPICAL TRENCH RESTORATION DETAIL WITHIN STATE HWY. RIGHT-OF-WAY
Not to Scale

SURVEY PLOTTED BY	DATE
DRAWN BY	
TRACED BY	
CHECKED BY	
NOTE BOOK	
No.	



STATE OF HAWAII
DEPARTMENT OF TRANSPORTATION
HIGHWAYS DIVISION

MISCELLANEOUS DETAILS

FARRINGTON HIGHWAY
Intersection Improvements at Waiomea Street
Project No. 93A-06-98

Scale: As Noted Date: August 2000

SHEET No. C-4 OF 29 SHEETS