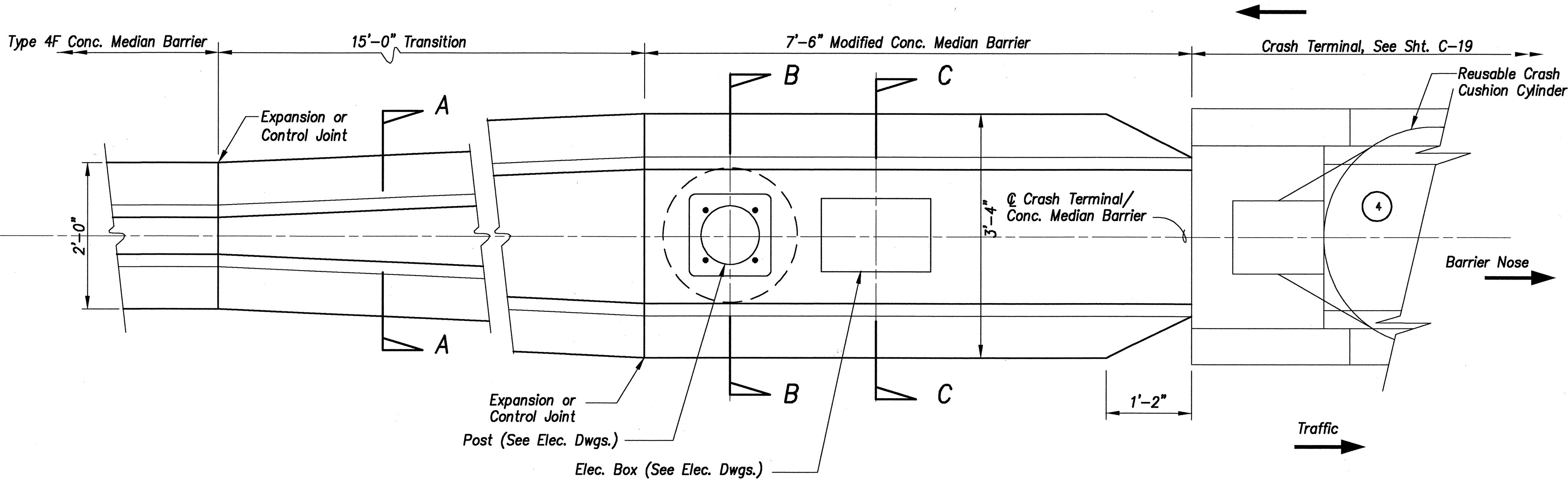
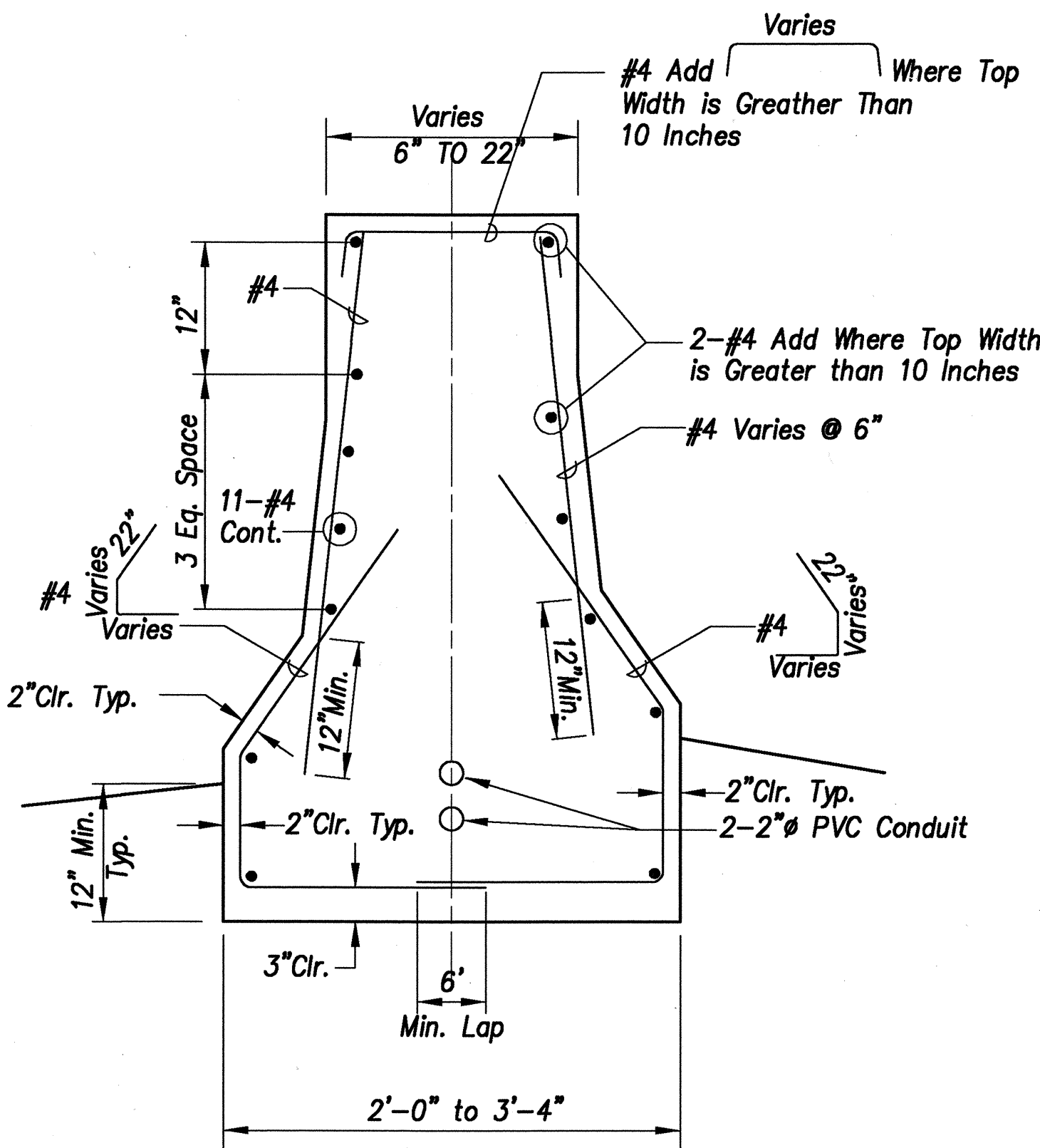


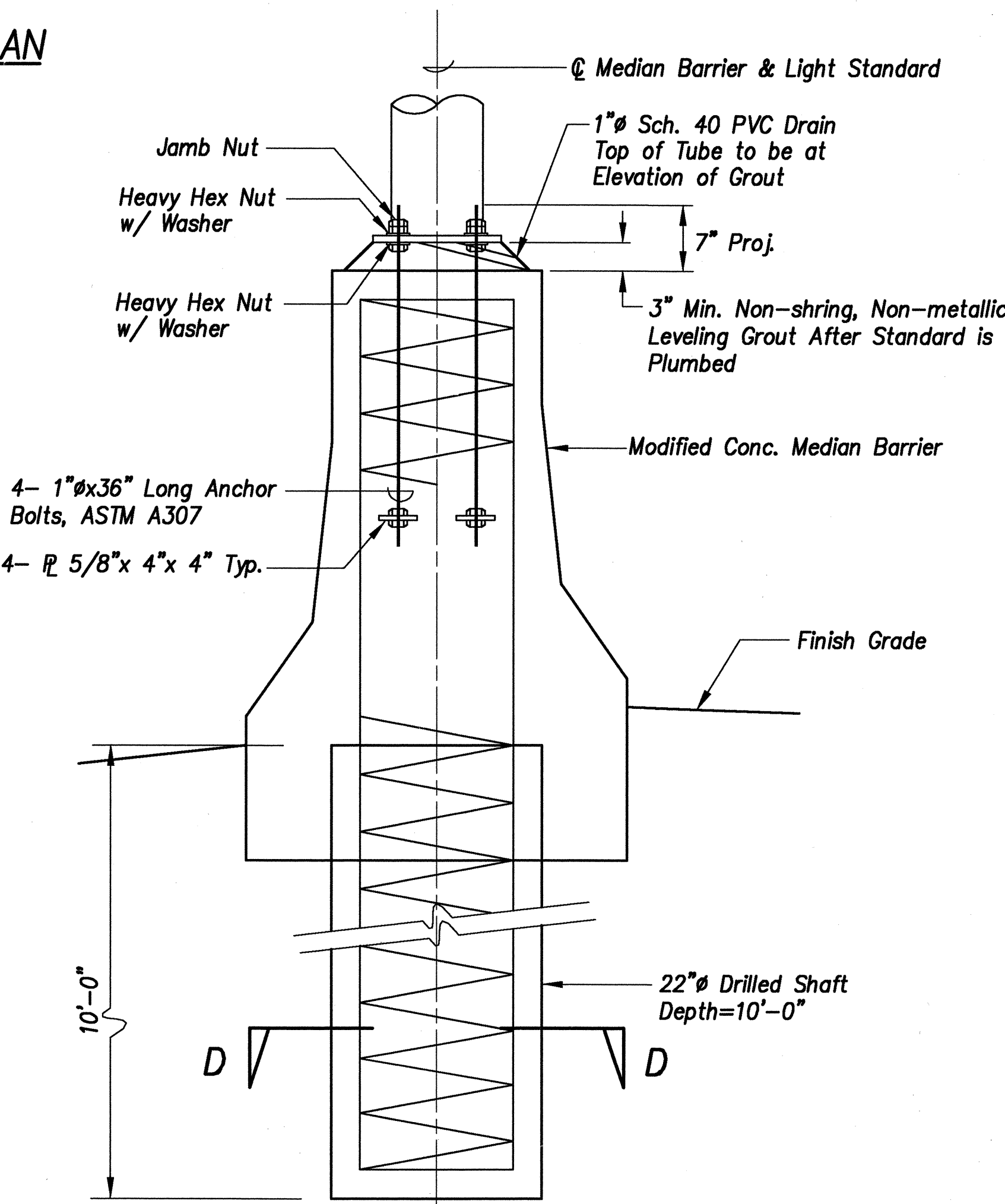
FED. ROAD DIST. NO.	STATE	PROJ. NO.	FISCAL YEAR	SHEET NO.	TOTAL SHEETS
HAWAII	HAW.	93A-06-98	2001	22	68



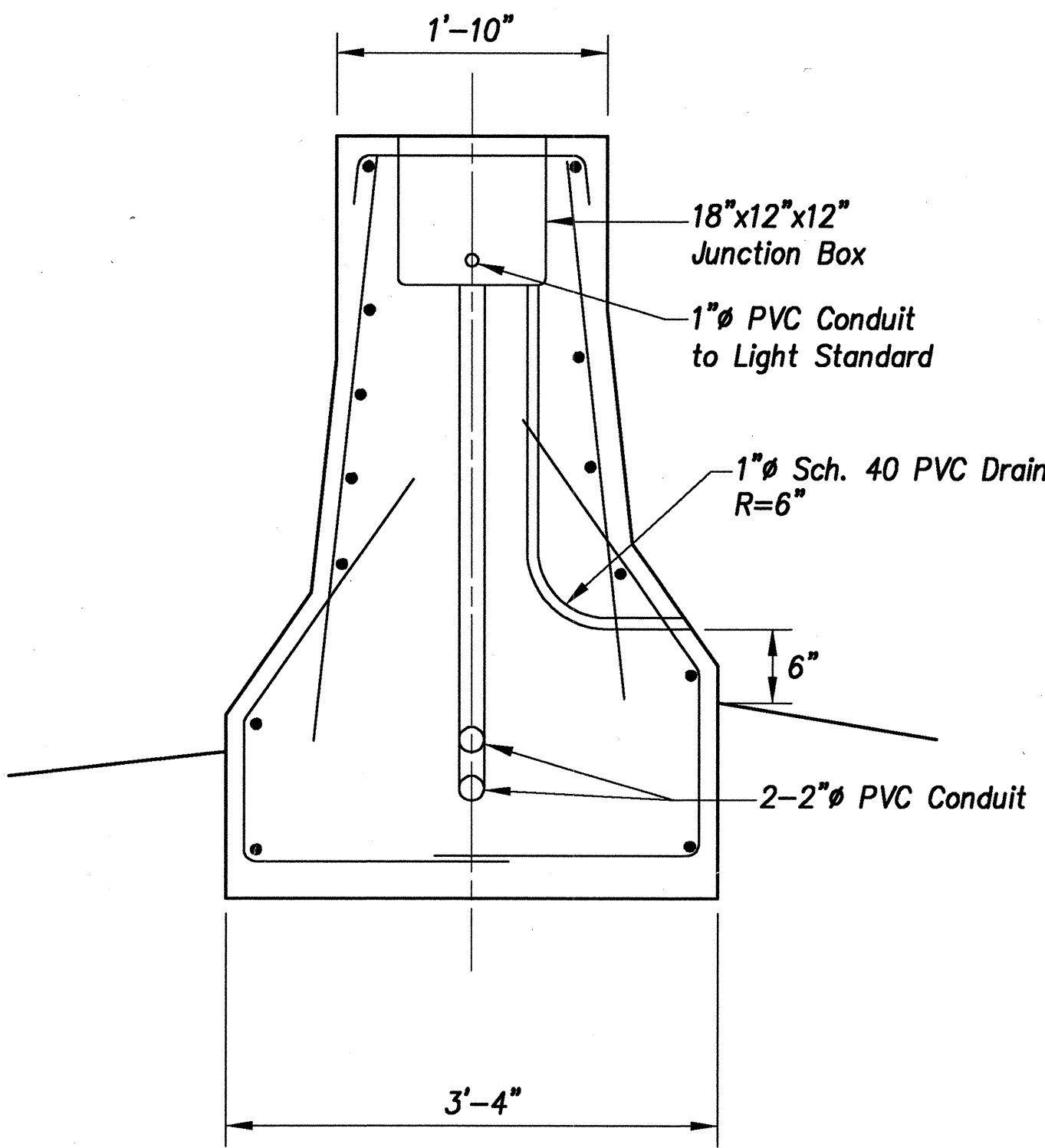
PLAN



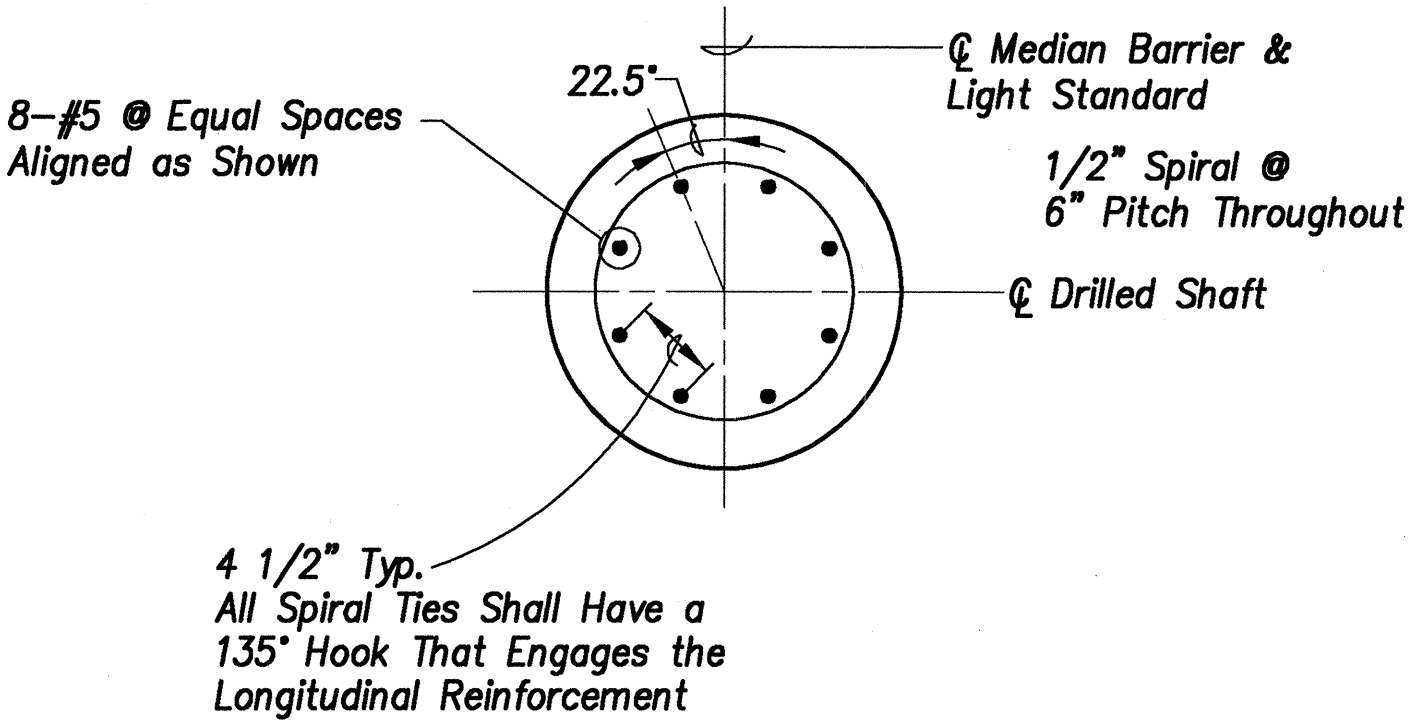
SECTION A-A



SECTION B-B



SECTION C-C



SECTION D-D

SURVEY PLOTTED BY	DATE
DRAWN BY	
TRACED BY	
NOTED BY	
CHECKED BY	
ORIGINAL PLAN	
NOTE BOOK	
No.	

LIGHT STANDARD CONCRETE MEDIAN BARRIER MODIFICATION Scale: 1"=1'-0"

STATE OF HAWAII
DEPARTMENT OF TRANSPORTATION
HIGHWAYS DIVISION

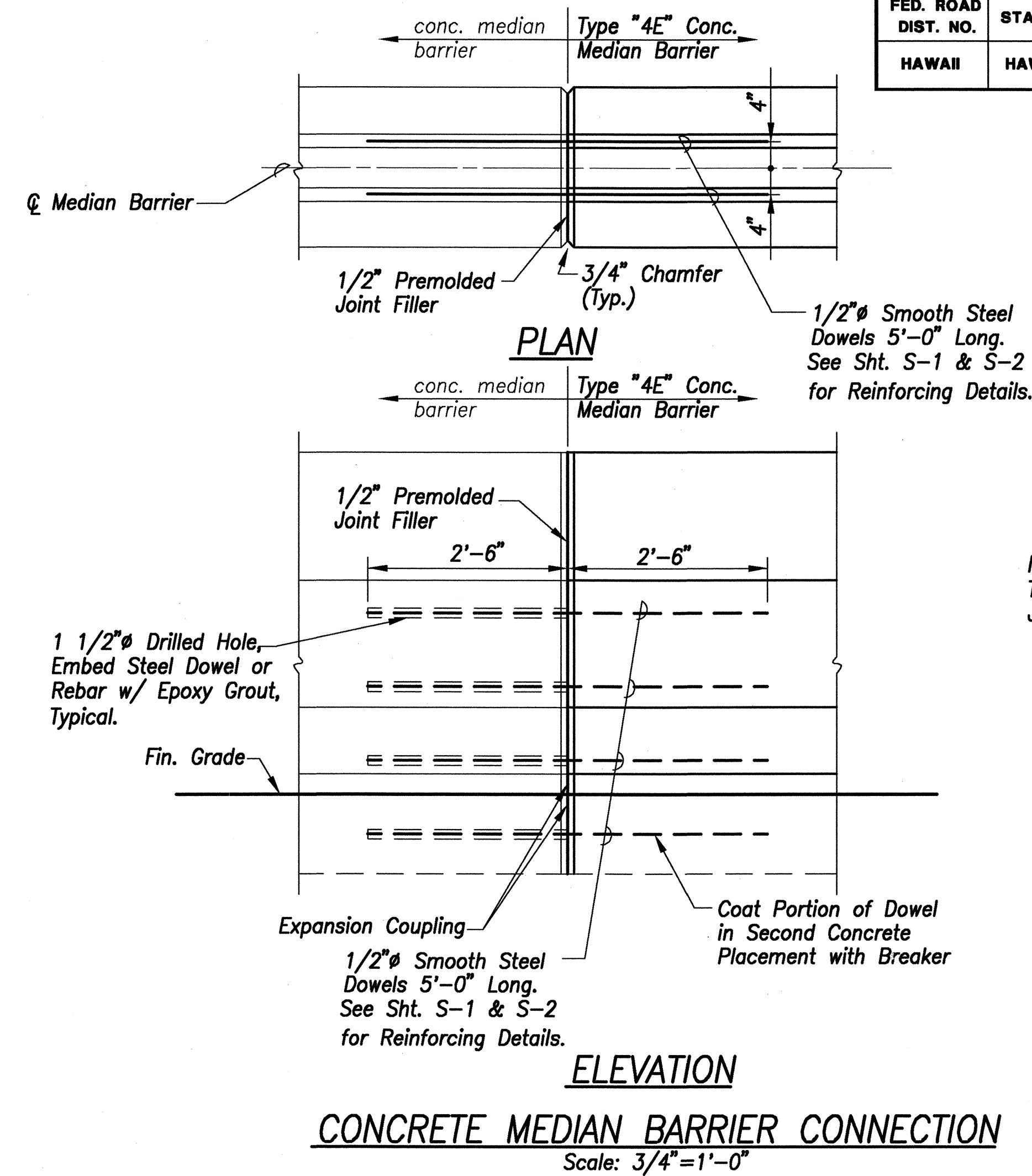
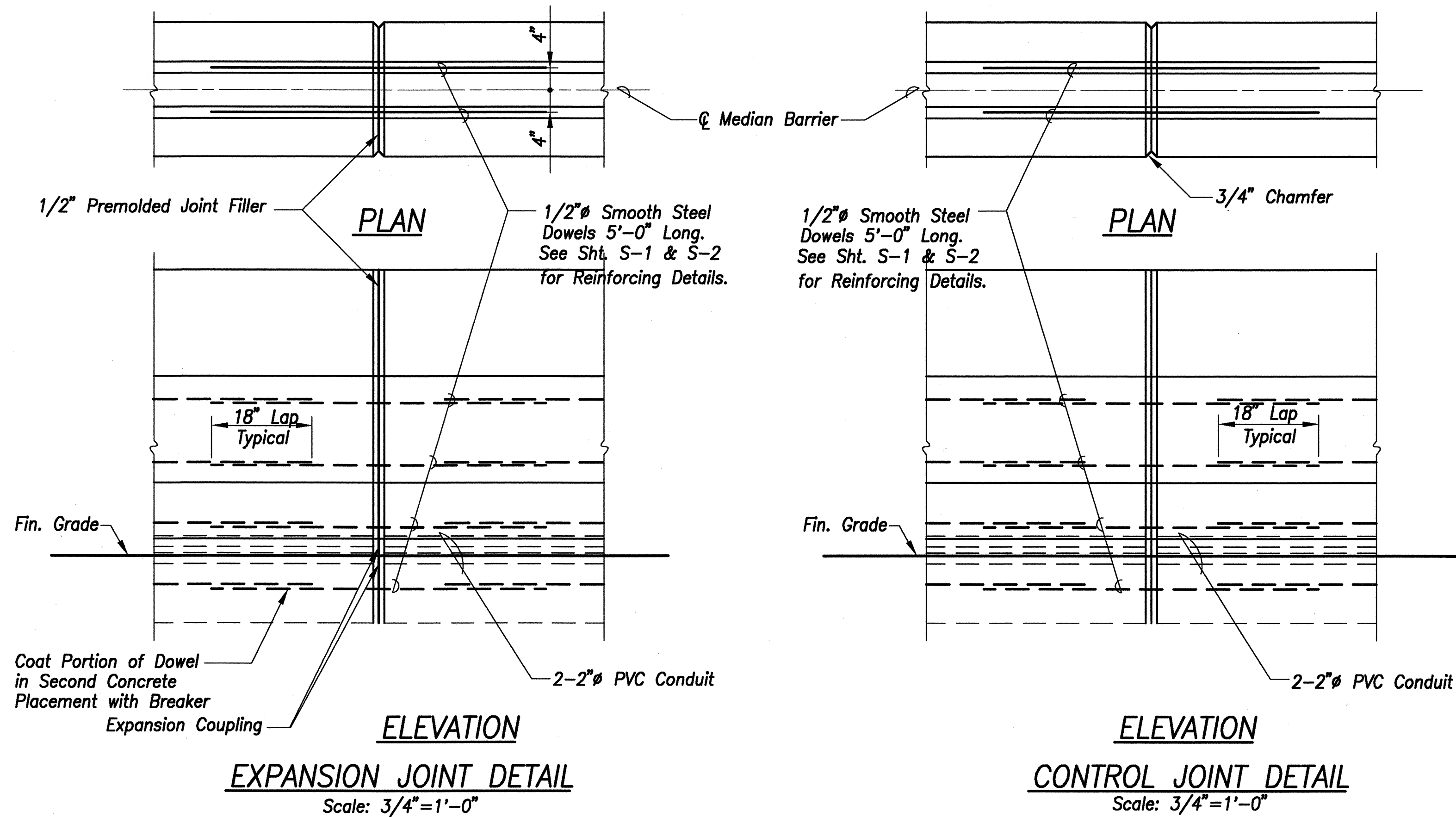
MEDIAN BARRIER MODIFICATION

FARRINGTON HIGHWAY
Intersection Improvements at Waiomea Street
Project No. 93A-06-98

Scale: As Noted
Date: August 2000

SHEET No. C-16 OF 29 SHEETS

FED. ROAD DIST. NO.	STATE	PROJ. NO.	FISCAL YEAR	SHEET NO.	TOTAL SHEETS
HAWAII	HAW.	93A-06-98	2001	23	88



Note: See Standard Plan TE-63 and TE-65 for Balance of Concrete Barrier Joint Details.

CONCRETE MEDIAN BARRIER MODIFICATION DETAILS AND NOTES
Scale: As Shown

SURVEY PLOTTED BY	DATE
DRAWN BY	
TRACED BY	
DESIGNED BY	
CHECKED BY	
NOTE BOOK	
No.	

STATE OF HAWAII
DEPARTMENT OF TRANSPORTATION
HIGHWAYS DIVISION

MEDIAN BARRIER MODIFICATION

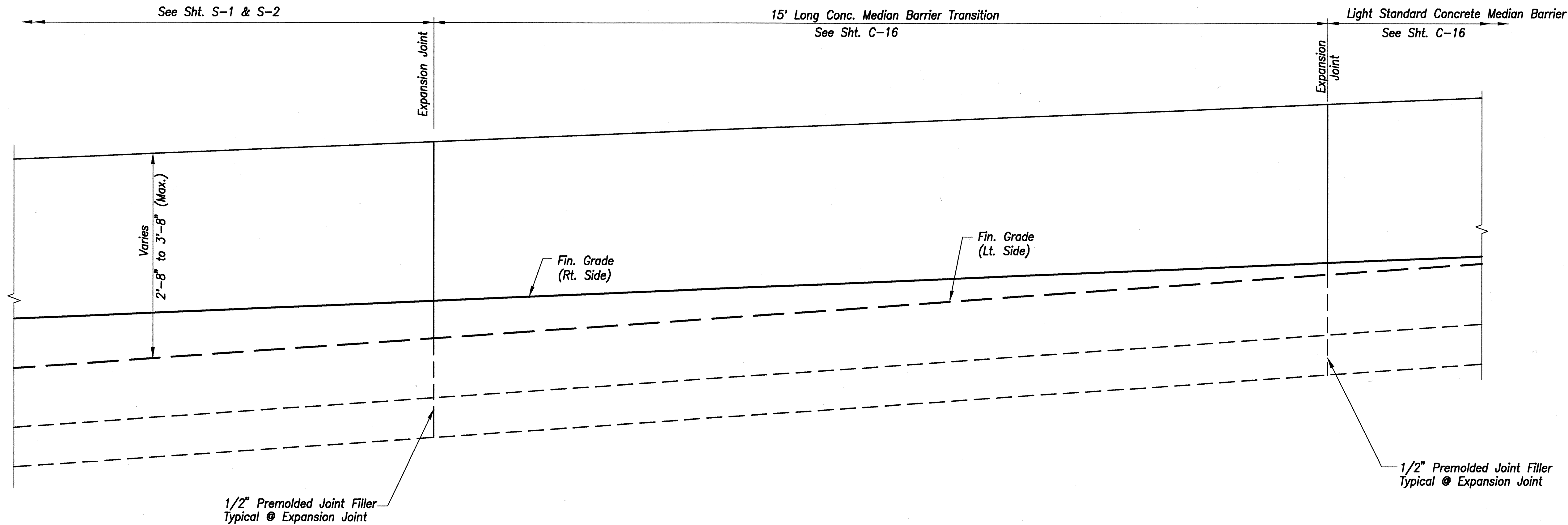
FARRINGTON HIGHWAY
Intersection Improvements at Waiomea Street
Project No. 93A-06-98

Scale: As Noted Date: August 2000

SHEET No. C-17 OF 29 SHEETS

FED. ROAD DIST. NO.	STATE	PROJ. NO.	FISCAL YEAR	SHEET NO.	TOTAL SHEETS
HAWAII	HAW.	93A-06-98	2001	24	68

Note: See Standard Plan TE-56 for
Concrete Barrier Transition Details.



CONCRETE BARRIER TRANSITION – ELEVATION

Scale: 1"=1'-0"

ORIGINAL PLAN	SURVEY PLOTTED BY	DATE
NOTE BOOK	DRAWN BY	
No.	TRACED BY	
	DESIGNED BY	
	QUANTITIES BY	
	CHECKED BY	

STATE OF HAWAII
DEPARTMENT OF TRANSPORTATION
HIGHWAYS DIVISION

MEDIAN BARRIER MODIFICATION

FARRINGTON HIGHWAY
Intersection Improvements at Waiomea Street
Project No. 93A-06-98

Scale: As Noted
Date: August 2000

SHEET No. C-18 OF 29 SHEETS