

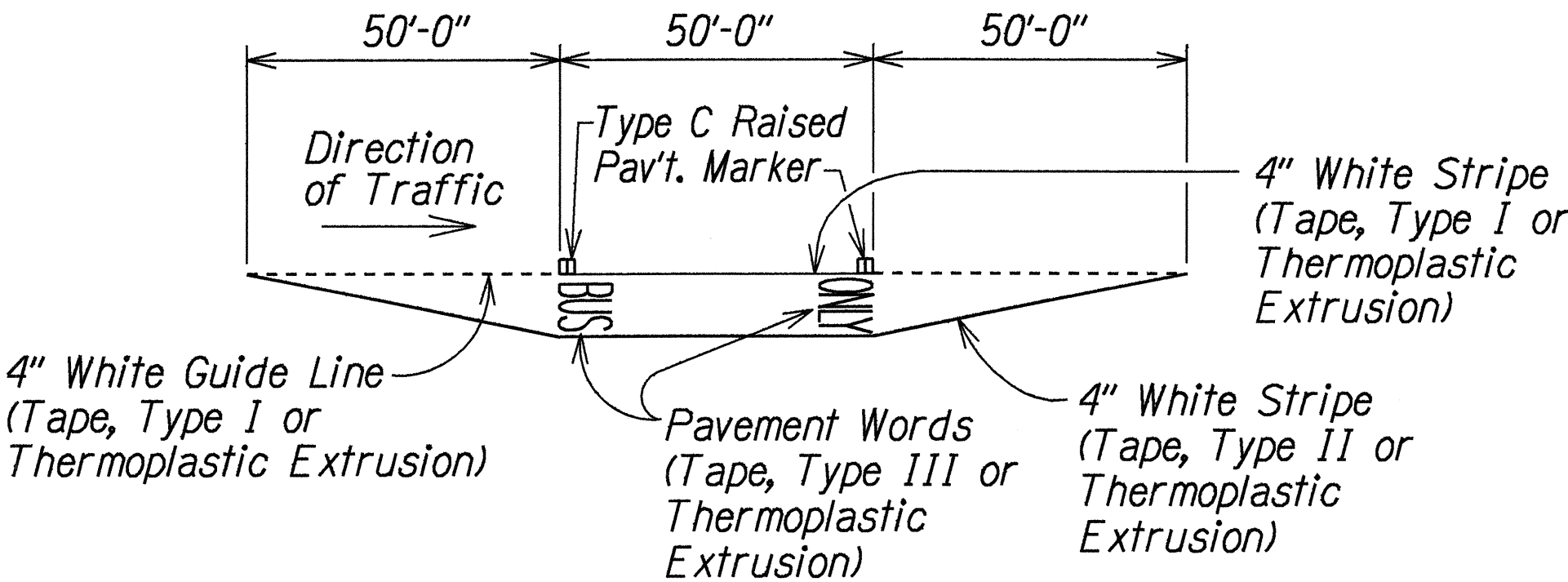
FED. ROAD DIST. NO.	STATE	FED. AID PROJ. NO.	FISCAL YEAR	SHEET NO.	TOTAL SHEETS
HAWAII	HAW.	NH-093-1(19)	1999	36	49

LEGEND

	4 each Type A Raised Pavement Markers Type C Raised Pavement Markers @ 40'-0" o.c.
	4 each Type J Raised Pavement Markers Type D Raised Pavement Markers @ 40'-0" o.c.
	8" White Stripe with Type C Raised Pavement Markers @ 20'-0" o.c. (Tape, Type I or Thermoplastic Extrusion)
	4" Double Solid Yellow with Type D Raised Pavement Markers @ 20'-0" o.c. (Tape, Type I or Thermoplastic Extrusion)
	4" Double Solid Yellow Stripes with Type H Raised Pavement Markers @ 20'-0" o.c. (Tape, Type II or Thermoplastic Extrusion)
	4" Yellow Edge Stripe with Type H Raised Pavement Markers @ 40'-0" o.c. (Tape, Type II or Thermoplastic Extrusion)
	4" Double Solid White Stripes with Type C Raised Pavement Markers @ 20'-0" o.c. (Tape, Type I or Thermoplastic Extrusion)
	Lane Change Restriction Marking 4 each Type A Raised Pavement Markers Type C Raised Pavement Markers @ 20'-0" o.c. 4" White Stripe (Tape, Type I or Thermoplastic Extrusion)
	4" or 8" White Edge Stripe with Type C Raised Pavement Markers @ 40'-0" o.c. (Tape, Type II or Thermoplastic Extrusion)
	4" White Guide Lines (Tape, Type III or Thermoplastic Extrusion except for bus bays)
	Transverse Median Marking (Tape, Type II or Thermoplastic Extrusion)
	Transverse Shoulder Marking (Tape, Type II or Thermoplastic Extrusion)
	Channelizing Island or Deceleration Lane Gore (Tape, Type II or Thermoplastic Extrusion)
	Crosswalk and Stop Line. All Stop Lines shall be 10'-0" from Crosswalk unless otherwise noted. The circled number indicates the number of lanes for payment (Tape, Type III or Thermoplastic Extrusion)
	Pavement Arrow (Tape, Type III or Thermoplastic Extrusion)
	STOP Pavement Word (Tape, Type III or Thermoplastic Extrusion)
	4 Each Type J Raised Pavement Markers Type D Raised Pavement Markers @ 40'-0" o.c. Type H Raised Pavement Markers (Reflective Surface facing no-passing direction) 4" Single Solid Yellow Stripe (Tape, Type I or Thermoplastic Extrusion)
	Extension of Edge Line, 4" Wide x 2'-0" Long White Stripe @ 10'-0" o.c. w/Type C Markers @ 40'-0" o.c. (Tape, Type III or Thermoplastic Extrusion)

NOTES

1. Layout of pavement markings and striping shall be done by the Contractor and approved by the Engineer prior to any installation work.
2. Existing pavement markings not incorporated in the final traffic pattern shall be removed as directed by the Engineer. Costs shall be incidental to the various pavement marking items.
3. Raised pavement markers shall not be installed within crosswalks.
4. Final locations of all signs shall be approved by the Engineer prior to any installation work.
5. Existing signs not shown on these plans shall remain as posted unless otherwise directed by the Engineer. Removal and disposal of existing signs and/or posts as designated on these plans shall be incidental to the various signing items.
6. Final locations of all Stop Lines shall be approved by the Engineer prior to installation.
7. All pavement striping shall be as noted on the legend or plans.
8. All preformed pavement marking tapes over existing pavement shall be applied with an approved primer as recommended by the tape manufacturer and as approved by the Engineer. The primer shall be allowed to dry to the tacky stage prior to tape application.
9. Install Type II Object Markers on all utility poles or trees that are within the State Highway right-of-way and within 50 feet of the roadway edge of pavement shall be marked as directed by the Engineer.



TYPICAL BUS BAY STRIPING

Not to Scale

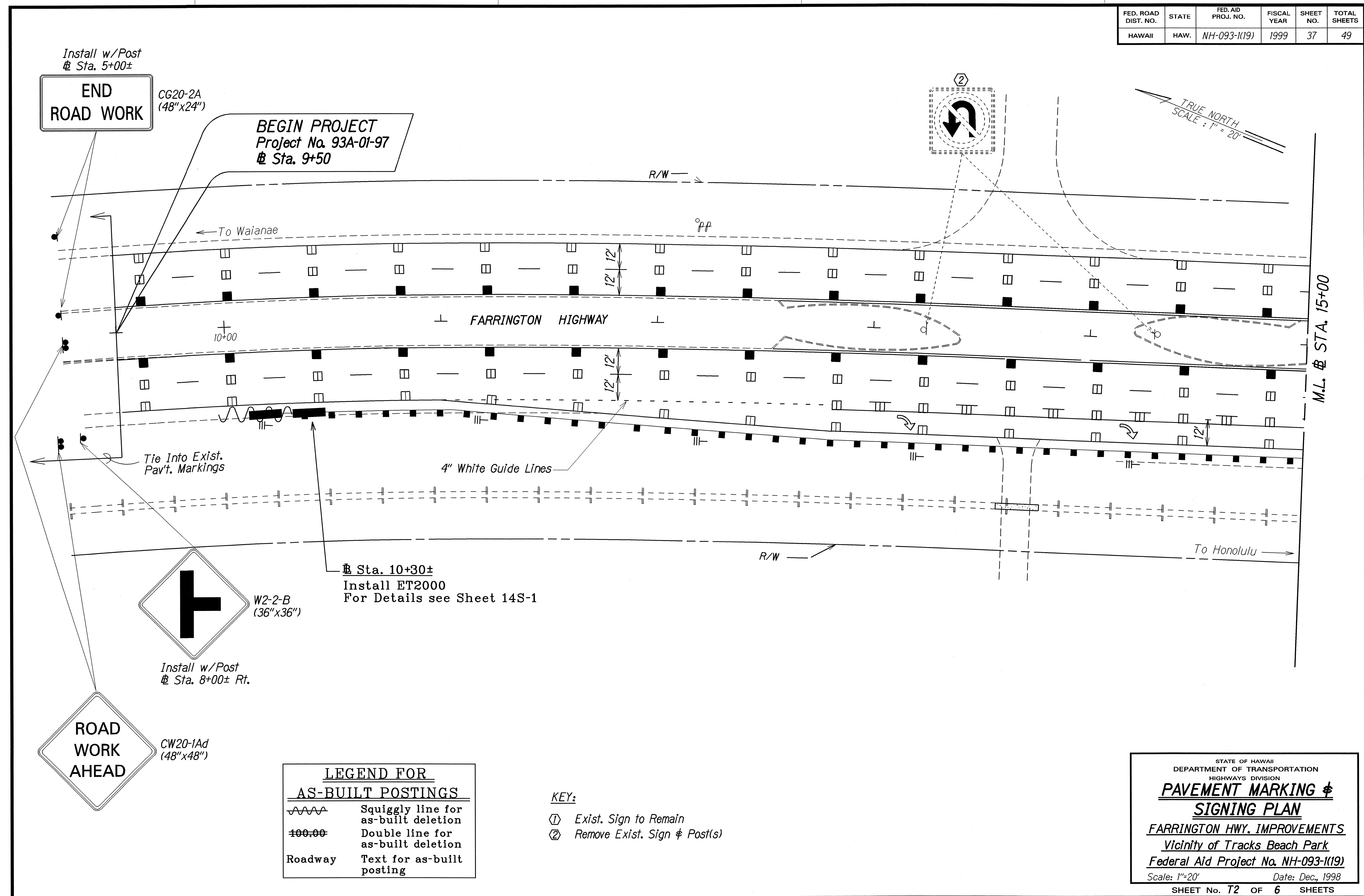
LEGEND

|||— Install Reflector Marker, RM-3 (Yellow) w/Steel Post

ORIGINAL PLAN	SURVEY PLOTTED BY	DATE
	DRAWN BY M. Takeda	12/6/97
	DESIGNED BY GUY KAHU	
	QUANTITIES BY N. Carter	
	CHECKED BY	

STATE OF HAWAII DEPARTMENT OF TRANSPORTATION HIGHWAYS DIVISION PAVEMENT MARKING LEGEND, DETAILS & NOTES FARRINGTON HIGHWAY IMPROVEMENTS Vicinity of Tracks Beach Park Federal Aid Project No. NH-093-1(19) Scale: As Noted Date: Dec., 1998 SHEET No. 71 OF 6 SHEETS

FED. ROAD DIST. NO.	STATE	FED. AID PROJ. NO.	FISCAL YEAR	SHEET NO.	TOTAL SHEETS
HAWAII	HAW.	NH-093-1(19)	1999	37	49



SURVEY PLOTTED BY	DATE
DESIGNED BY	12/16/98
NOTED BY	
QUANTITIES BY	
CHECKED BY	

LEGEND FOR AS-BUILT POSTINGS	
	Squiggly line for as-built deletion
	Double line for as-built deletion
Roadway	Text for as-built posting

- KEY:
- ① Exist. Sign to Remain
 - ② Remove Exist. Sign & Post(s)

STATE OF HAWAII
DEPARTMENT OF TRANSPORTATION
HIGHWAYS DIVISION

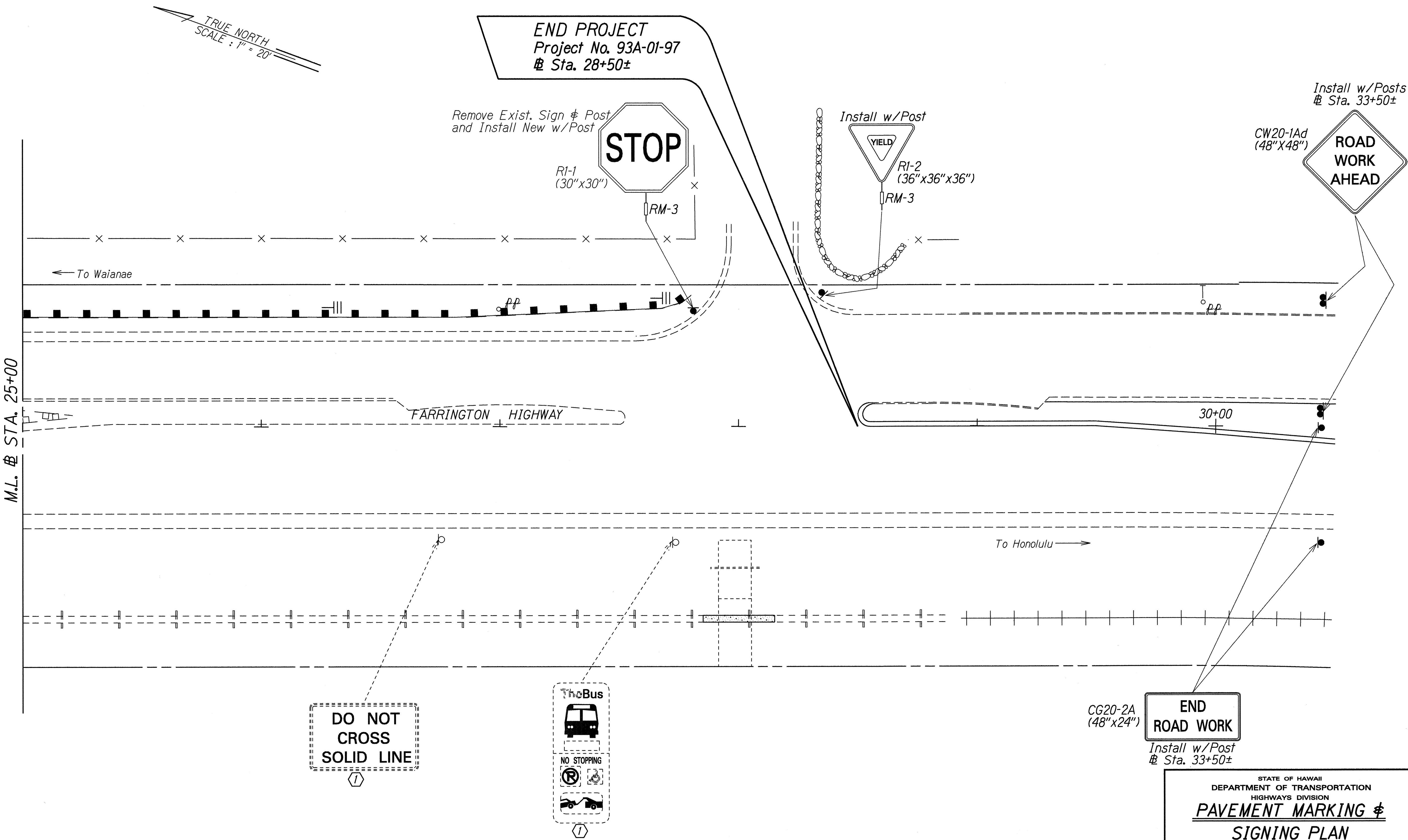
PAVEMENT MARKING & SIGNING PLAN

FARRINGTON HWY. IMPROVEMENTS
Vicinity of Tracks Beach Park
Federal Aid Project No. NH-093-1(19)

Scale: 1"=20' Date: Dec., 1998

SHEET No. T2 OF 6 SHEETS

FED. ROAD DIST. NO.	STATE	FED. AID PROJ. NO.	FISCAL YEAR	SHEET NO.	TOTAL SHEETS
HAWAII	HAW.	NH-093-1(19)	1999	40	49



ORIGINAL PLAN	DATE
SURVEY PLATTED BY	11/10/98
DRAWN BY M. Takahashi	
DESIGNED BY Gary Kaleb	
CHECKED BY	
NOTED BY	
10/2/98	
NO. 01/01/98	

- KEY:
- ① Exist. Sign to Remain
 - ② Remove Exist. Sign & Post(s)

STATE OF HAWAII
DEPARTMENT OF TRANSPORTATION
HIGHWAYS DIVISION

PAVEMENT MARKING &
SIGNING PLAN

FARRINGTON HIGHWAY IMPROVEMENTS
Vicinity of Tracks Beach Park
Federal Aid Project No. NH-093-1(19)

Scale: 1"=20' Date: Dec., 1998

SHEET No. T5 OF 6 SHEETS

