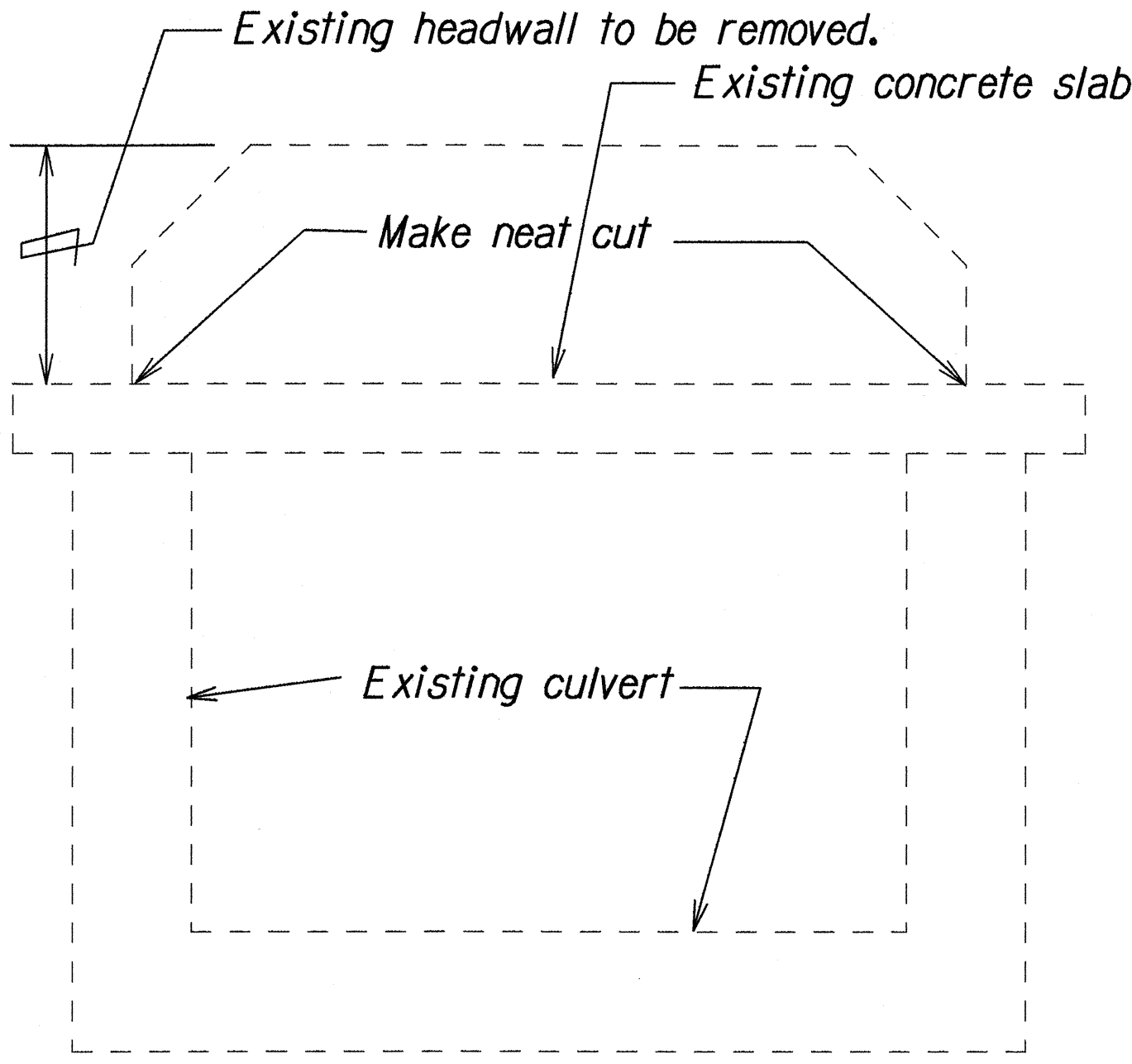


FED. ROAD DIST. NO.	STATE	FED. AID PROJ. NO.	FISCAL YEAR	SHEET NO.	TOTAL SHEETS
HAWAII	HAW.	STP-093-K(12)	1994	21	41

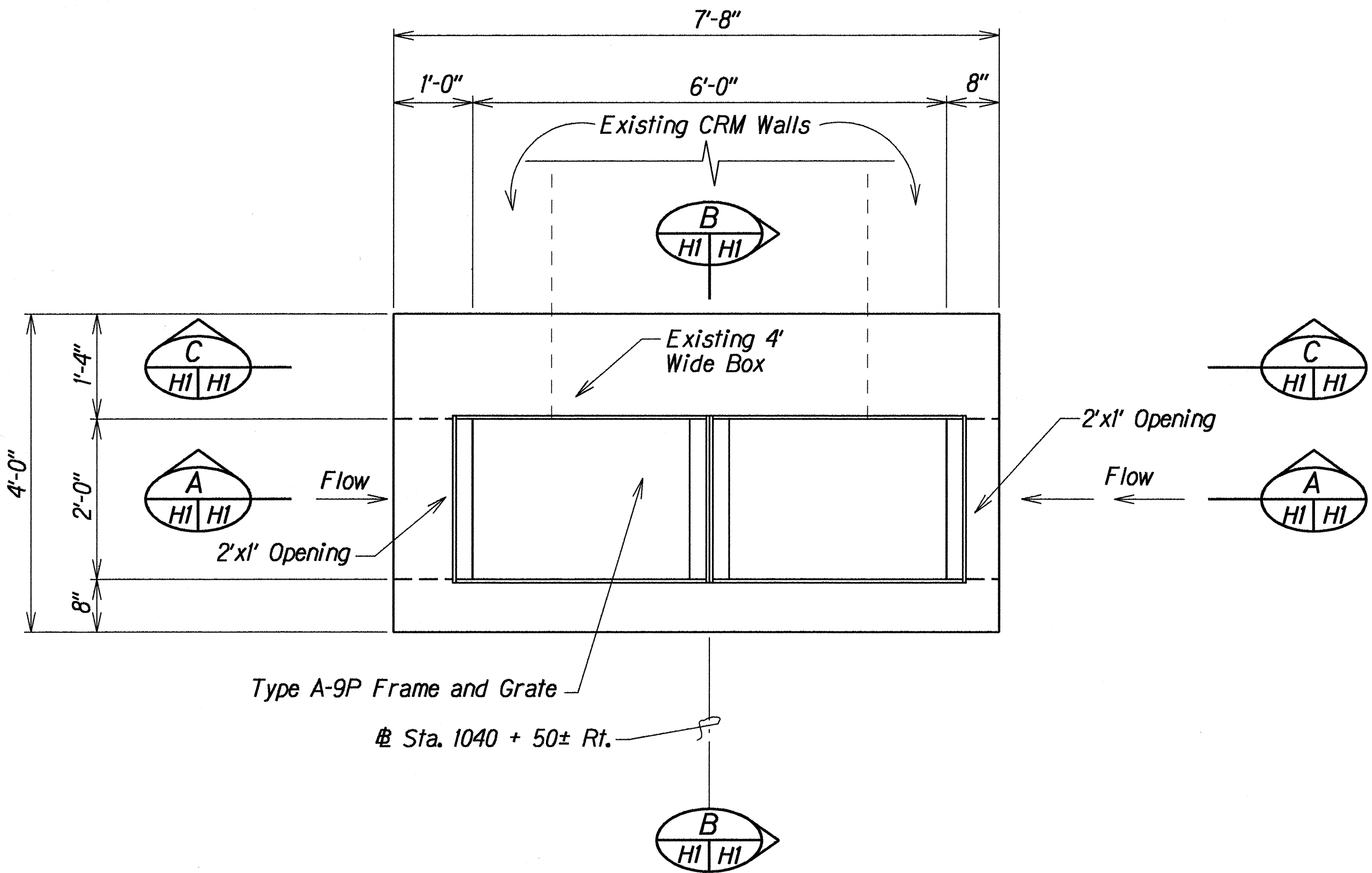
DRAINAGE NOTES:

- Contractor is to furnish materials, equipment, labor, tools and incidentals necessary to accomplish maintenance of flow, the cost of which shall be Existing drainage system will be functional at all times during construction. incidental to the various contract items.
- Demolishing and removing a portion or the entire existing structure shall not be paid for separately, but shall be considered incidental to the various contract items.
- Culverts within the catch basins, grated drop inlets and storm drain manholes shall be cut flush with the inside face of the wall. Above work shall be considered incidental to the various contract items.
- Contractor shall verify the locations of all culverts in the field. Any culvert damaged during construction shall be repaired or replaced by the Contractor at his expense.
- Concrete for grated drop inlets and headwalls shall be Class "A".
- Inlet and Outlet conditions shall be graded to permit free flow of run-off. Grading shall be to the satisfaction of the Engineer. Above work shall be considered incidental to the various contract items.
- For Typical Concrete Collar details see sht. no. H2. Concrete Collars shall be considered incidental to the various contract items.
- All culverts within the project limits shall be cleaned of all debris to permit free flow of run-off. Above work shall be considered incidental to the various contract items.
- Depth of Grated Drop Intakes (GDI) are approximate, the exact depth shall be determined in the field by the Engineer.
- Earth swale shall be graded to drain. This work shall be considered incidental to the various contract items.

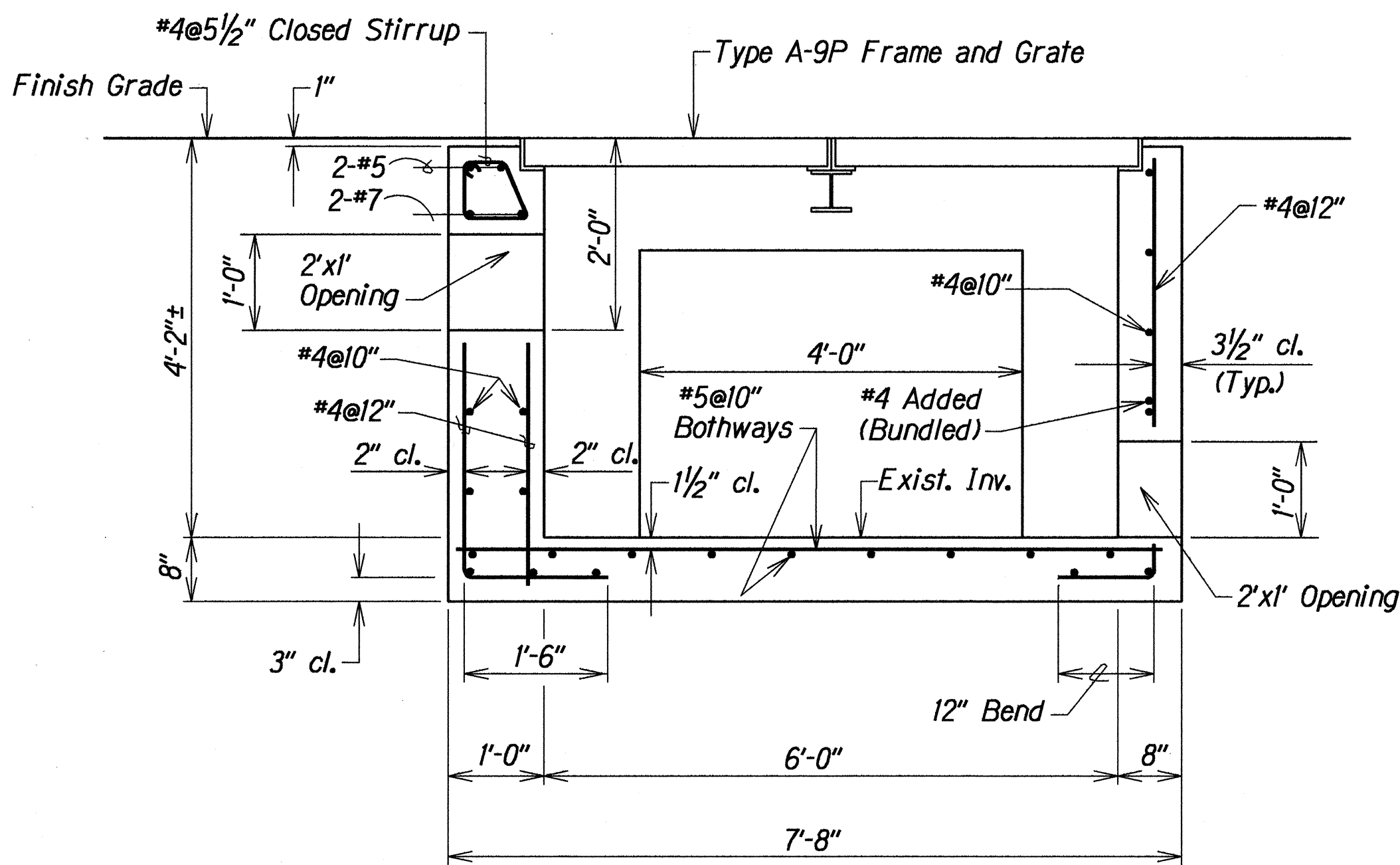


TYPICAL DETAIL OF HEADWALL REMOVAL

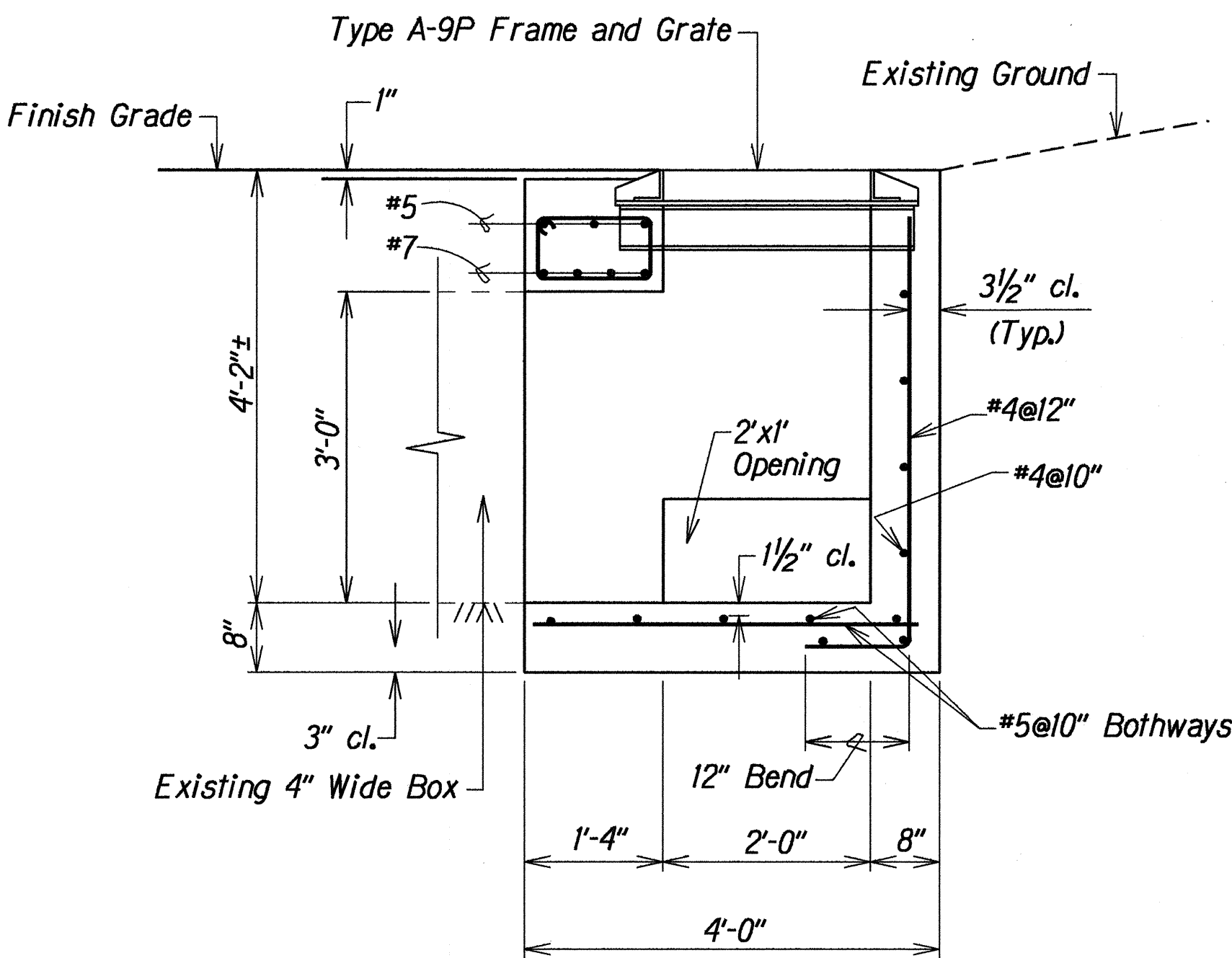
Not to Scale



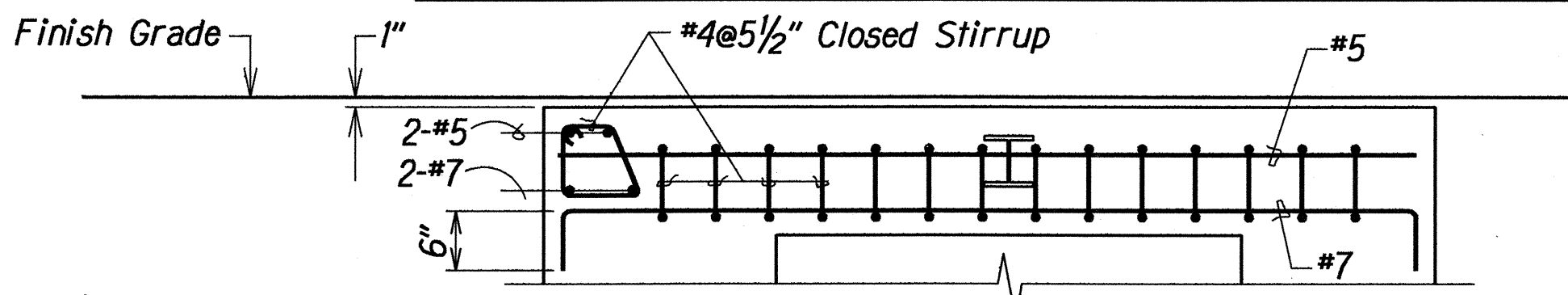
PLAN



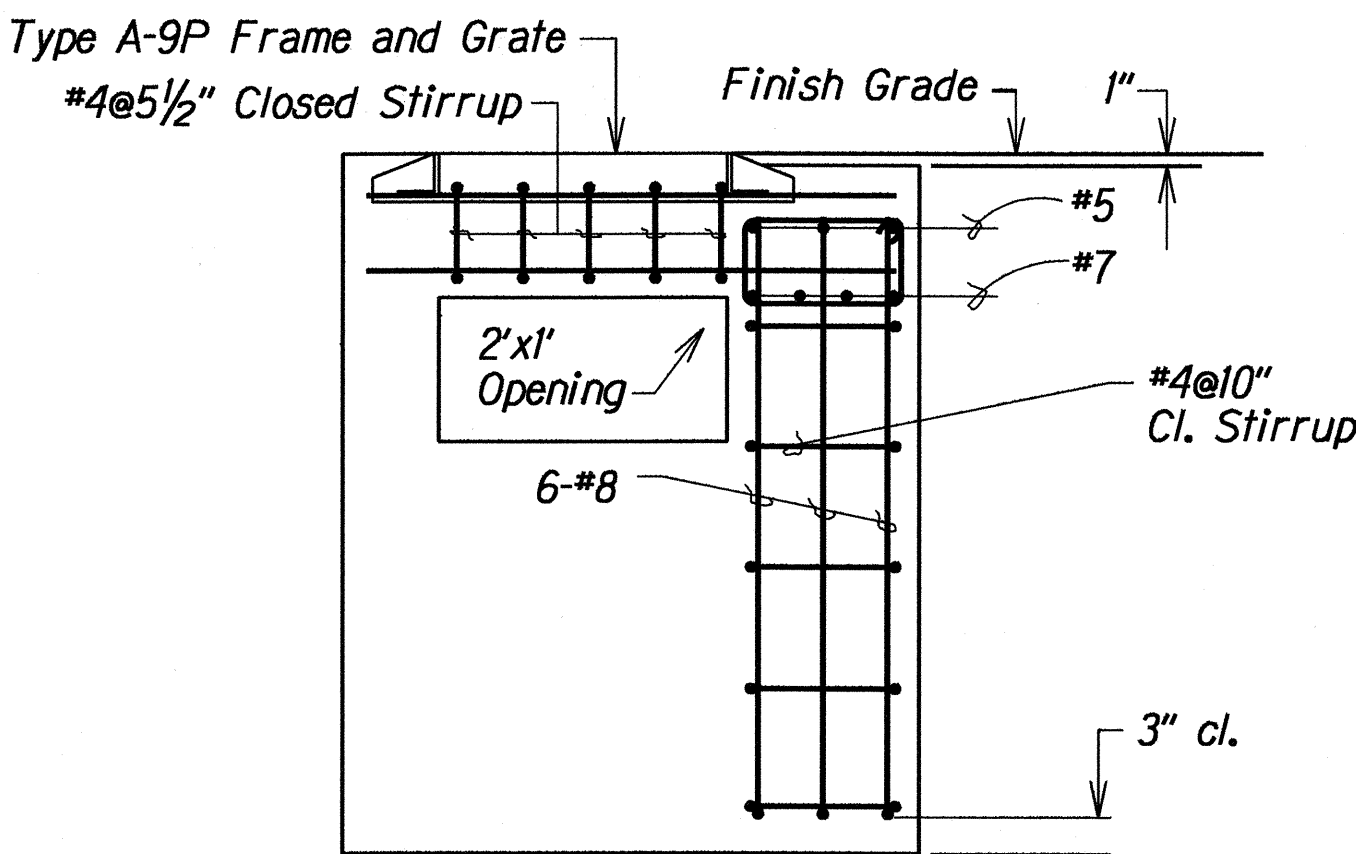
SECTION A



SECTION B



SECTION C



WALL REINFORCING

DETAILS OF TYPE "2 " GRATED DROP INLET AT STA. 1040+50± RT.

ORIGINAL PLAN	DATE
SURVEY PLOTTED BY	6/16/94
DRAWN BY	Russell Sato
DESIGNED BY	Edward Chiriac
CHECKED BY	4/10/94

6/16/94 Contract Plan changed to show revised steel reinforcing.

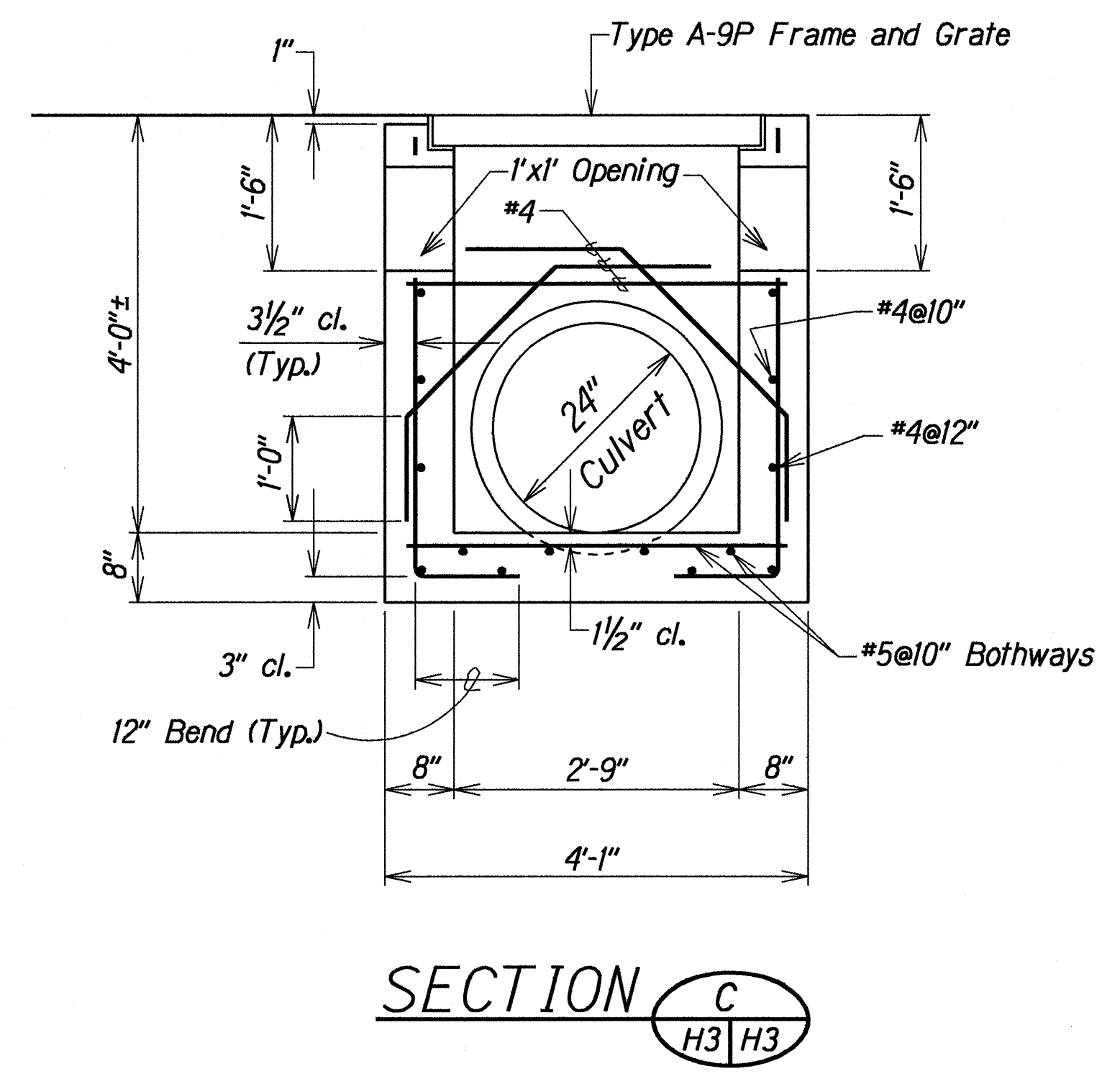
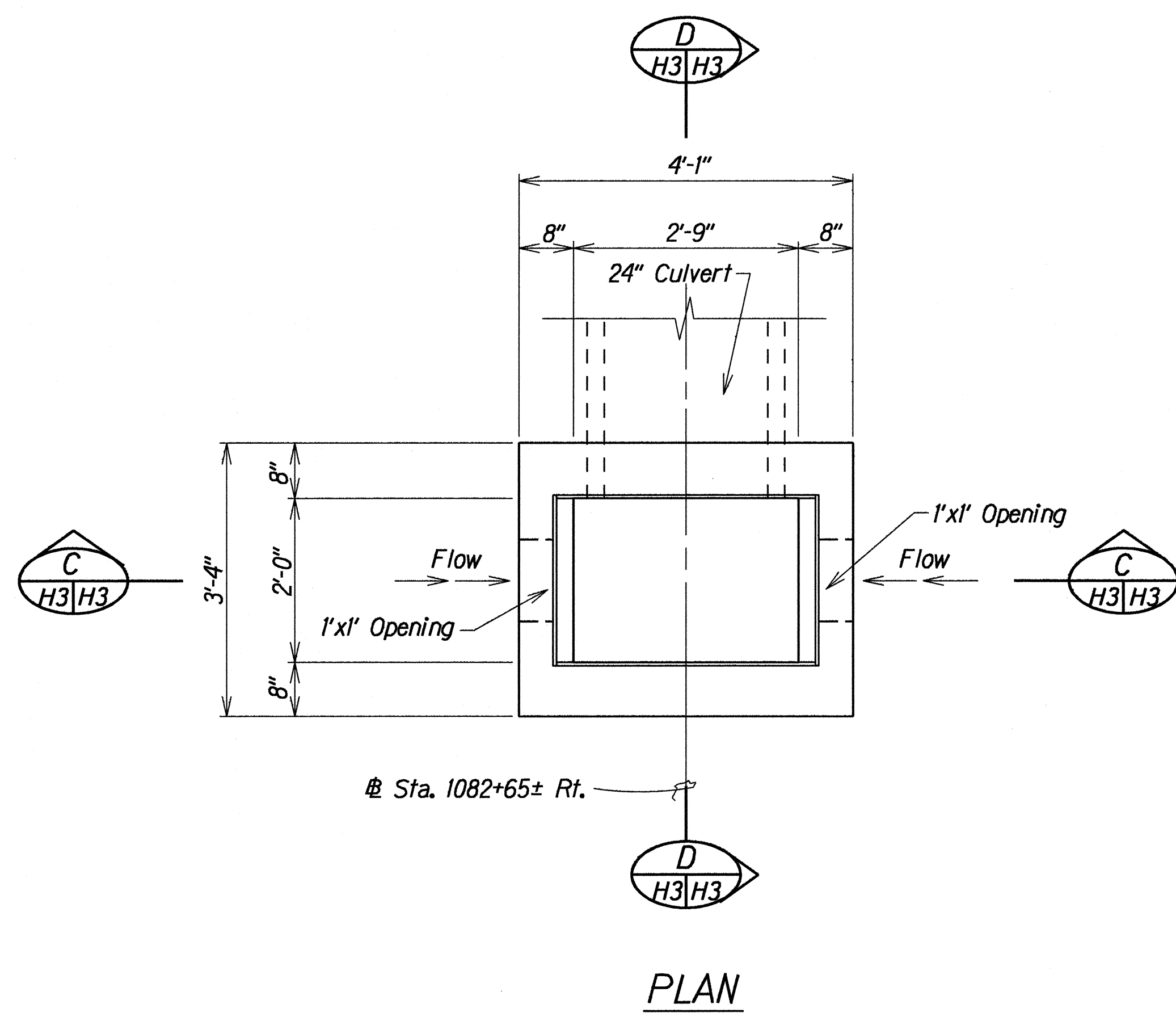
DATE REVISION

STATE OF HAWAII
DEPARTMENT OF TRANSPORTATION
HIGHWAYS DIVISION
DRAINAGE DETAILS
FARRINGTON HIGHWAY RESURFACING
Makau St. to Satellite Tracking Sta. Rd.
Fed. Aid Project No. STP-093-K(12)

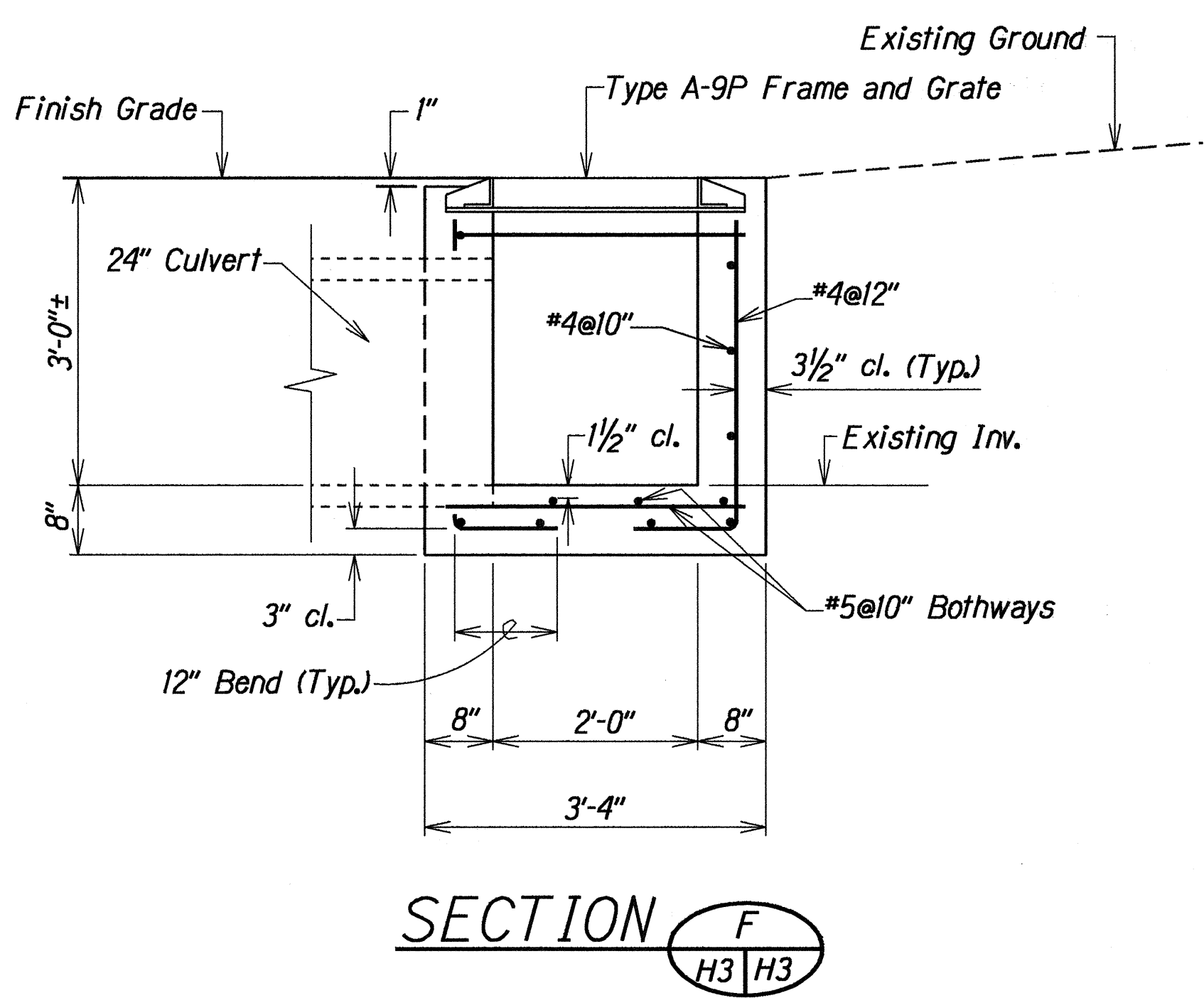
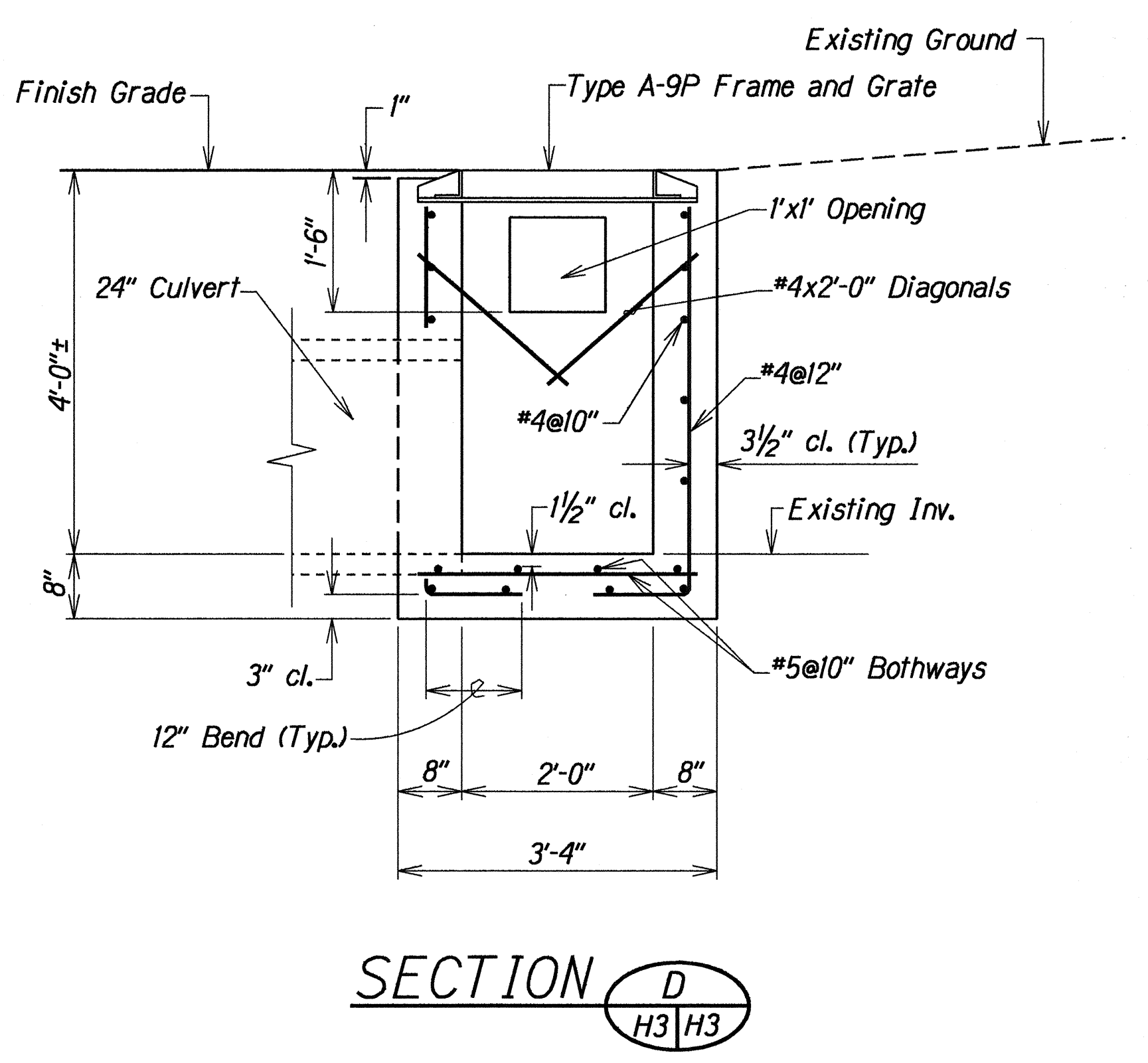
Scale: 3/4"=1'-0" Date: Jun, 1994

SHEET No. HI OF 3 SHEETS

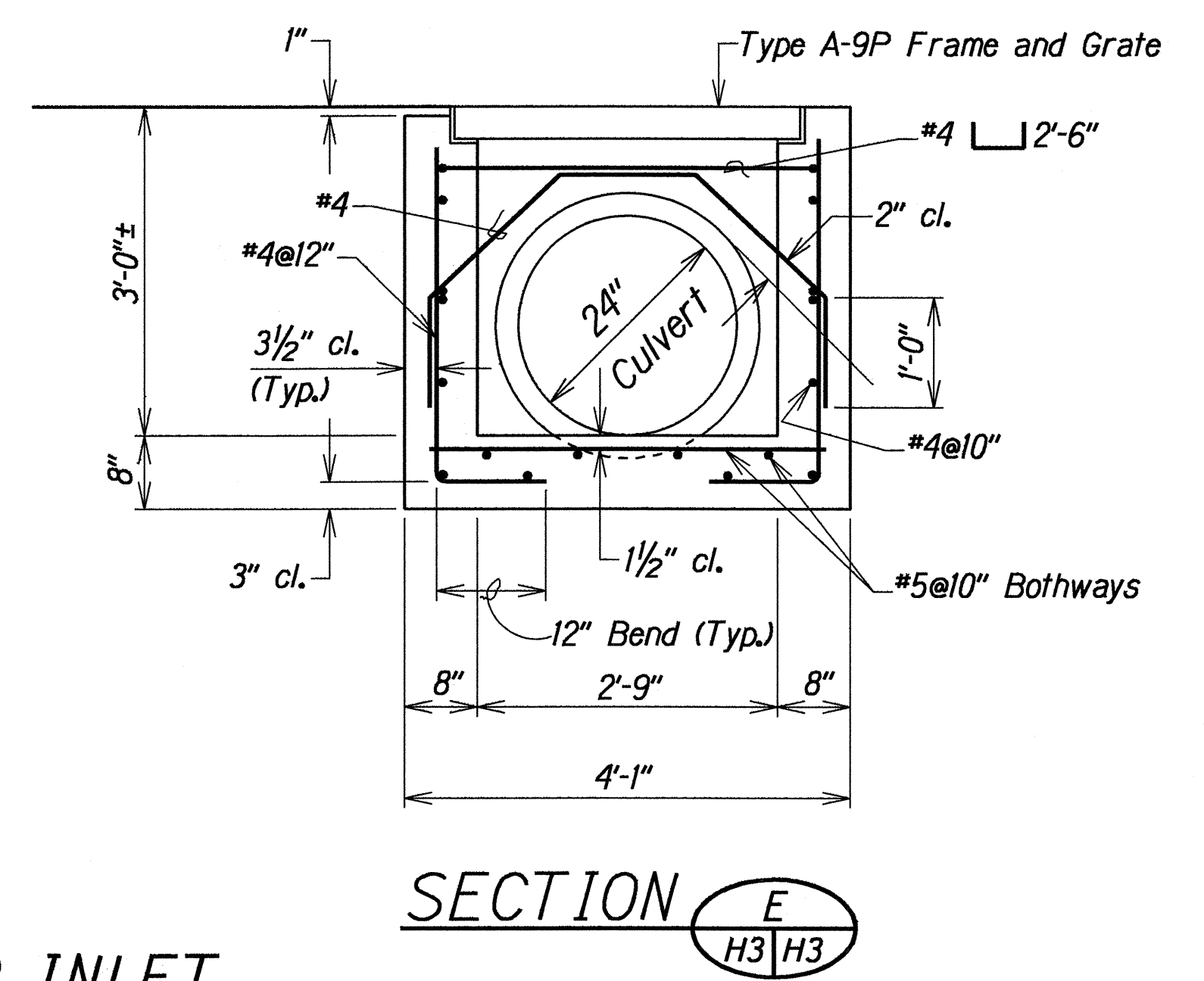
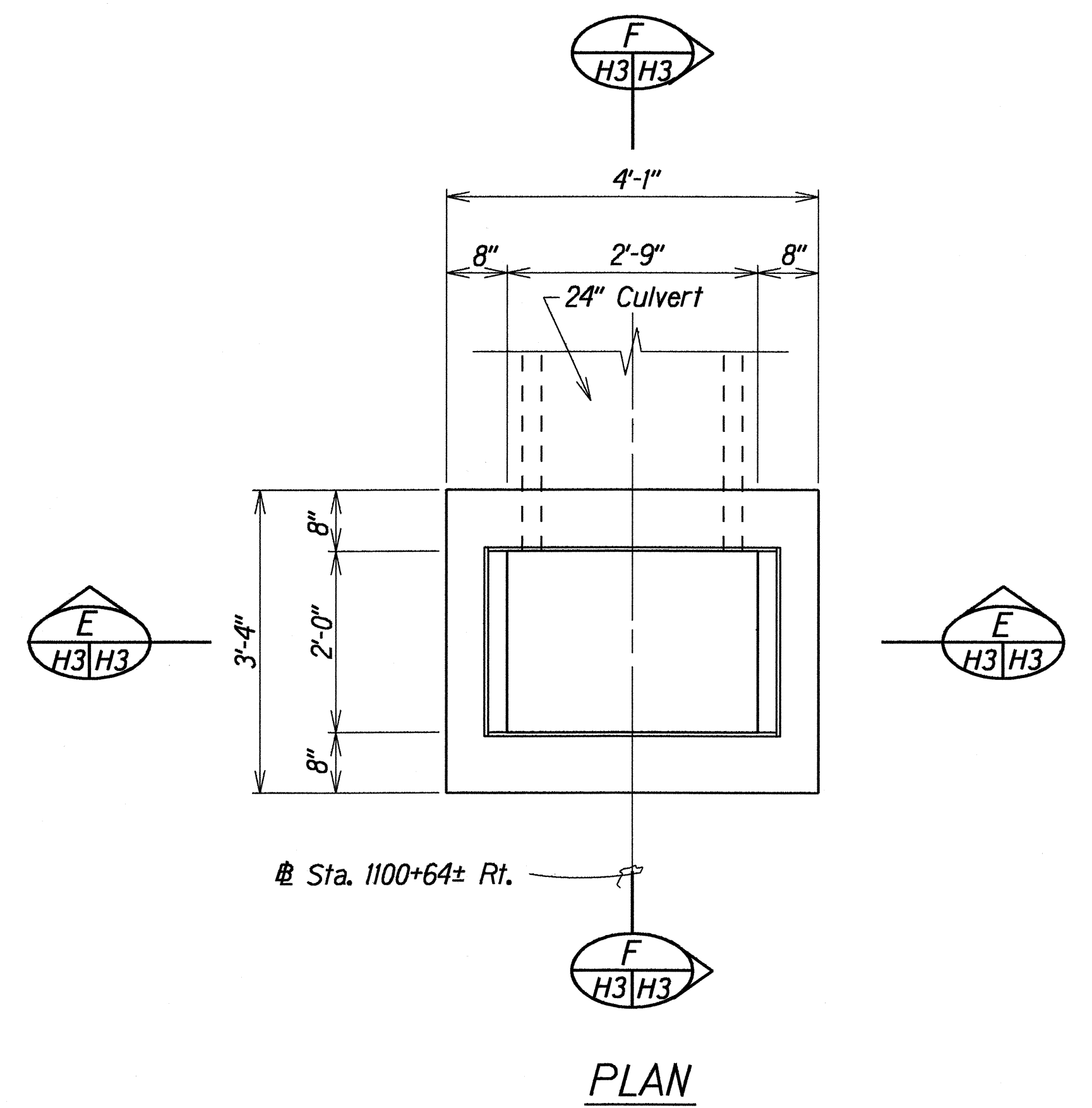
FED. ROAD DIST. NO.	STATE	FED. AID PROJ. NO.	FISCAL YEAR	SHEET NO.	TOTAL SHEETS
HAWAII	HAW.	STP-093-1(12)	1994	23	41



DETAILS OF TYPE "I" GRATED DROP INLET
AT STA. 1082+65± RT.



DETAILS OF TYPE "I" GRATED DROP INLET
AT STA. 1100+64± RT.



STATE OF HAWAII
DEPARTMENT OF TRANSPORTATION
HIGHWAYS DIVISION

DRAINAGE DETAILS

FARRINGTON HIGHWAY RESURFACING
Makau St. to Satellite Tracking Sta. Rd.
Fed. Aid Project No. STP-093-1(12)

Scale: 3/4"=1'-0" Date: Jun, 1994

SHEET No. H3 OF 3 SHEETS

6/16/94	Contract Plan changed to show revised steel reinforcing.
DATE	REVISION