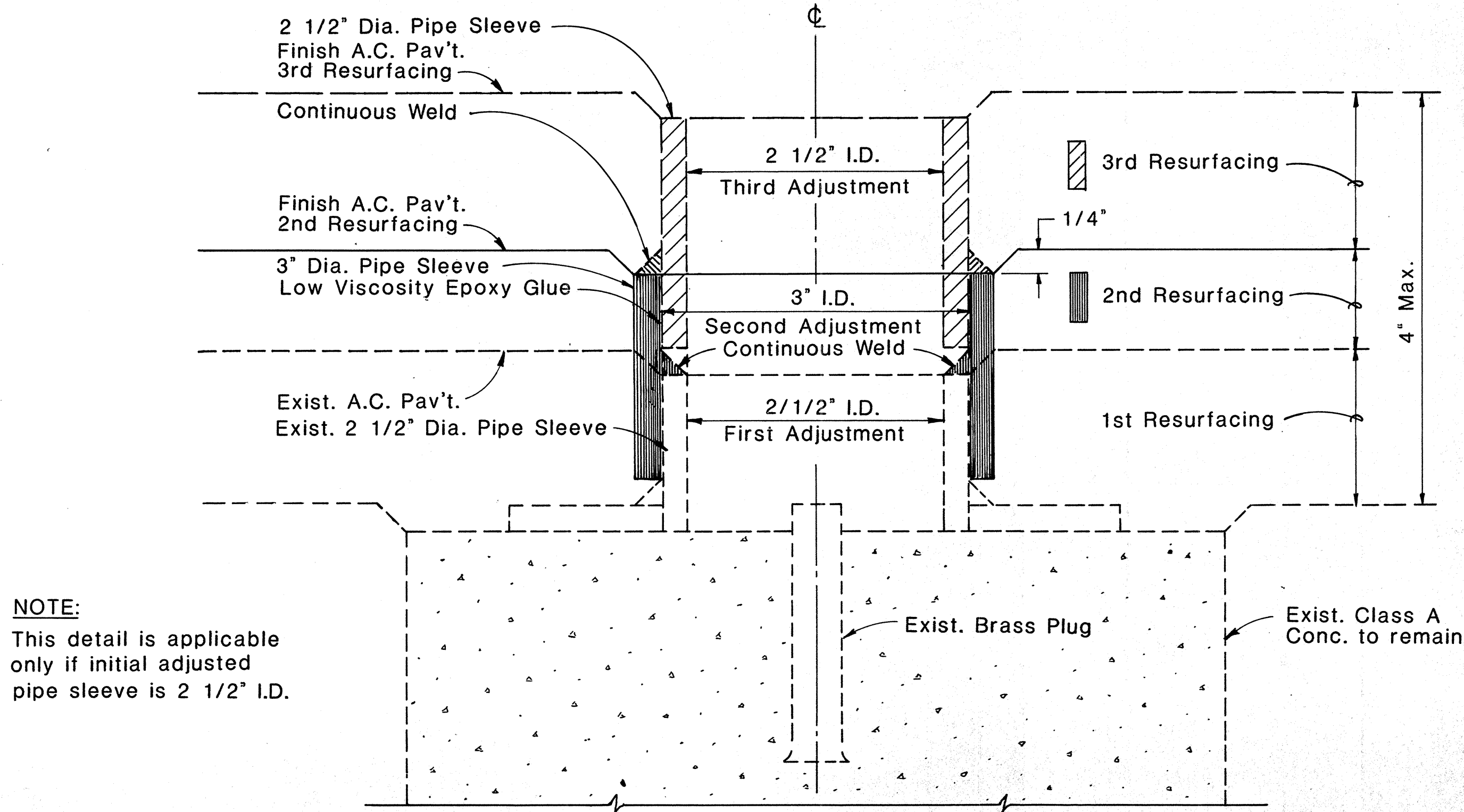


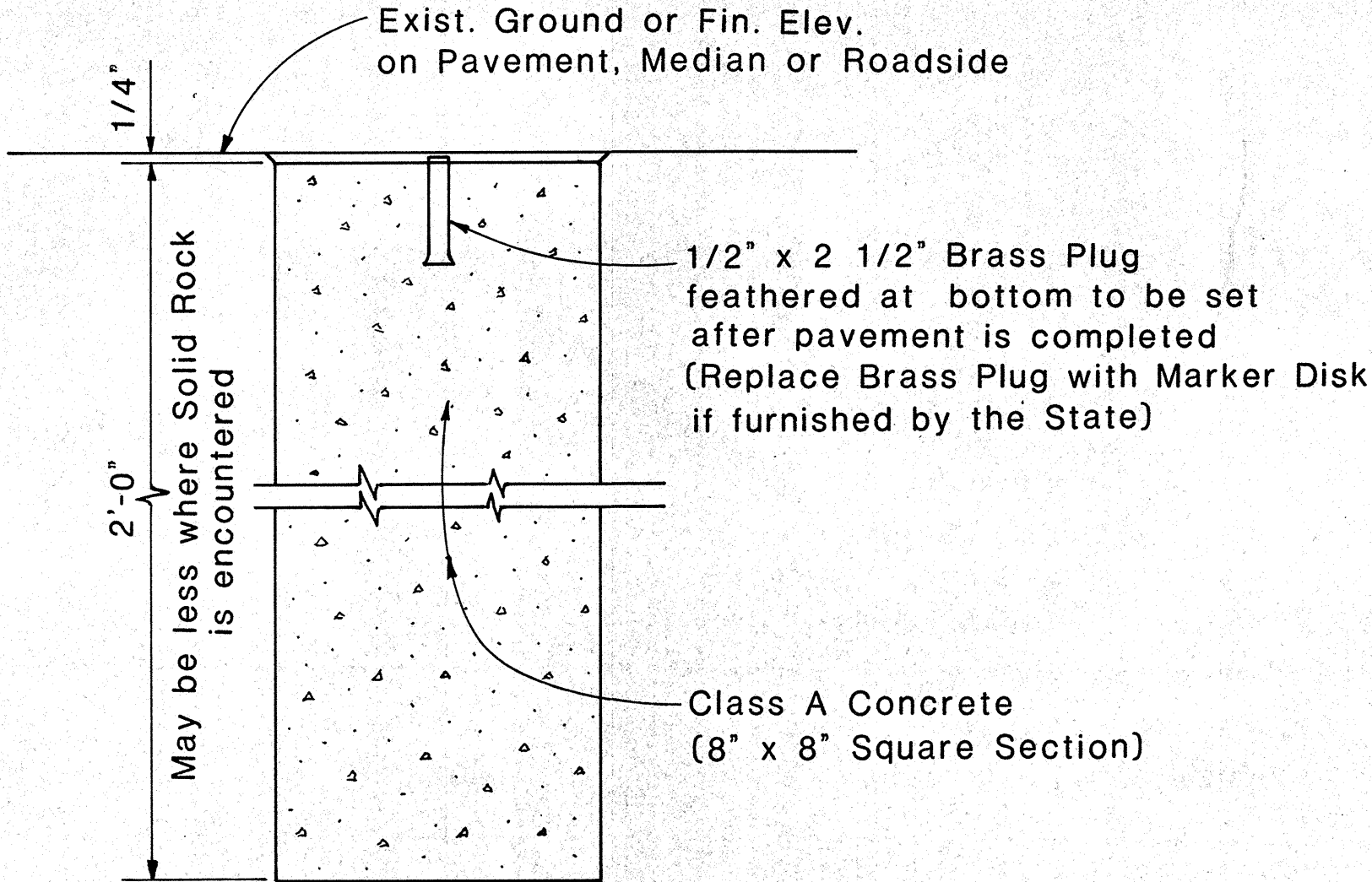
FED. ROAD DIST. NO.	STATE	FED. AID PROJ. NO.	FISCAL YEAR	SHEET NO.	TOTAL SHEETS
HAWAII	HAW.	HES-003-1(B)	1986	7	9



NOTE:
This detail is applicable only if initial adjusted pipe sleeve is 2 1/2" I.D.

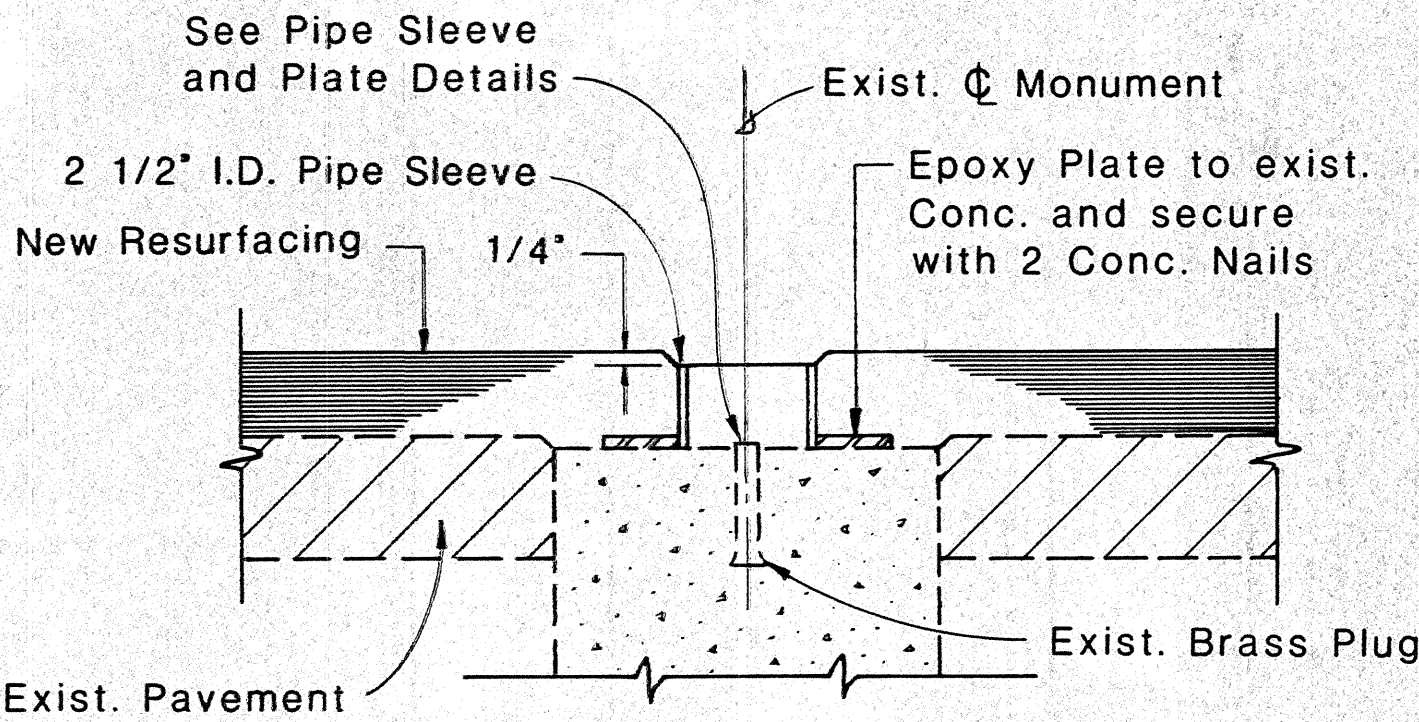
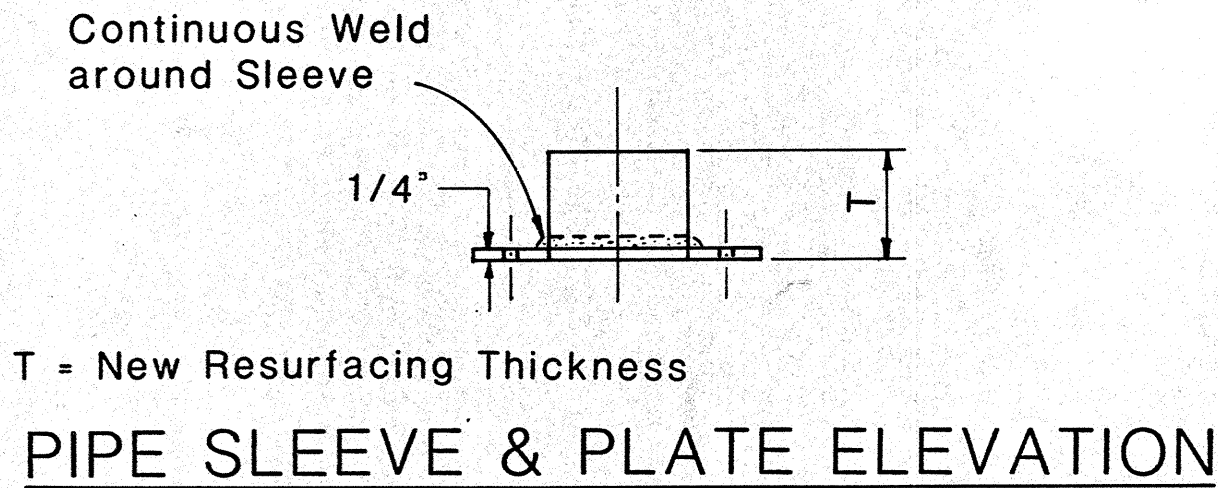
DETAIL FOR CENTERLINE MONUMENT (2ND & 3RD) ADJUSTMENTS

FULL SIZE

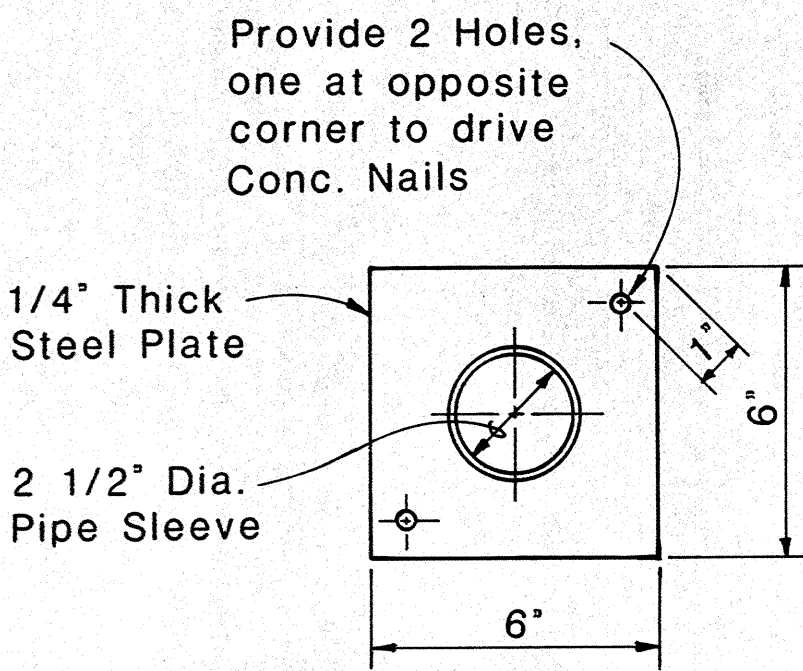


DETAIL FOR CENTERLINE & REFERENCE SURVEY MONUMENT

Scale: 1 1/2" = 1'-0"



SECTION THRU MONUMENT



PIPE SLEEVE & PLATE PLAN

NOTE
These Adjustment Details also apply to Centerline Monuments utilized as Stationline Reference Points.

DETAILS FOR ADJUSTED CENTERLINE MONUMENT

Scale: 3" = 1'-0"

APPROVAL RECOMMENDED:
Mike Miura 6-20-83
HIGHWAY DESIGN ENGINEER DATE
APPROVED:
Ed Fujiyama 6-22-83
ASSISTANT CHIEF, ENGINEERING DATE

NO.	REVISION	APPROVED	
		BY	DATE
1	Delete Note No. 1	<i>ED</i>	11-19-84

STATE OF HAWAII
DEPARTMENT OF TRANSPORTATION
HIGHWAYS DIVISION

STANDARD DETAILS

**CENTERLINE AND REFERENCE
SURVEY MONUMENT**

Scale: As Shown Date: May, 1983

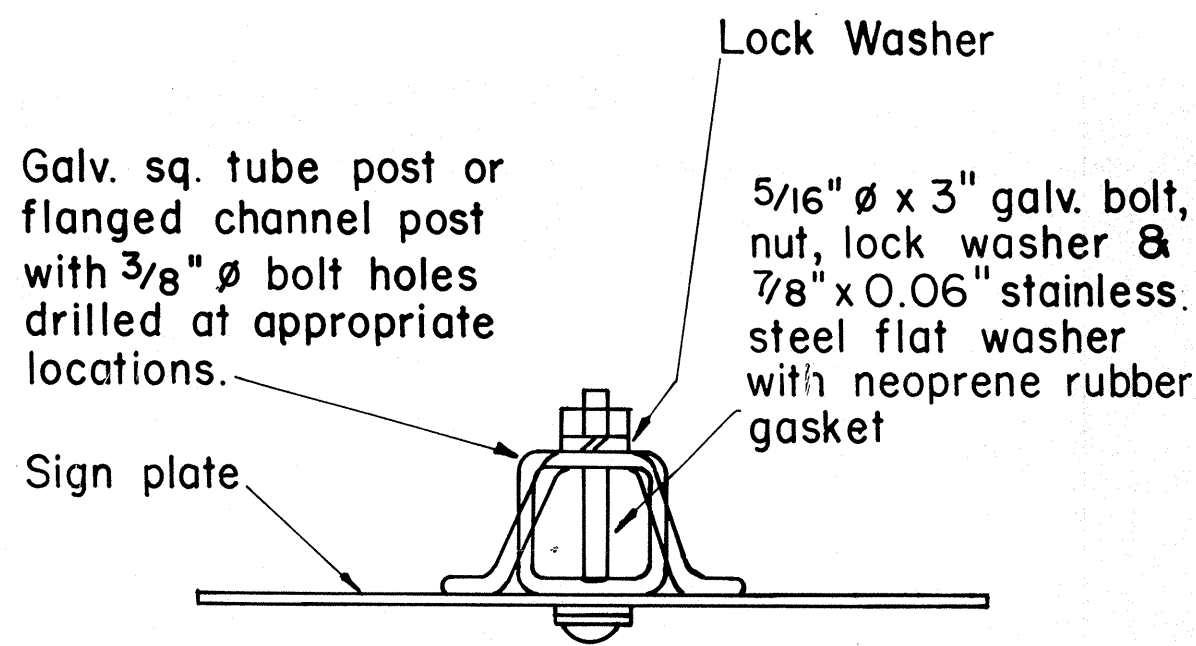
SHEET NO. 1 OF 3 SHEETS

SURVEY PLOTTED BY	DATE
DRAWN BY	
DESIGNED BY	
CHECKED BY	
ORIGINAL PLAN	
NOTE BOOK	
NO.	

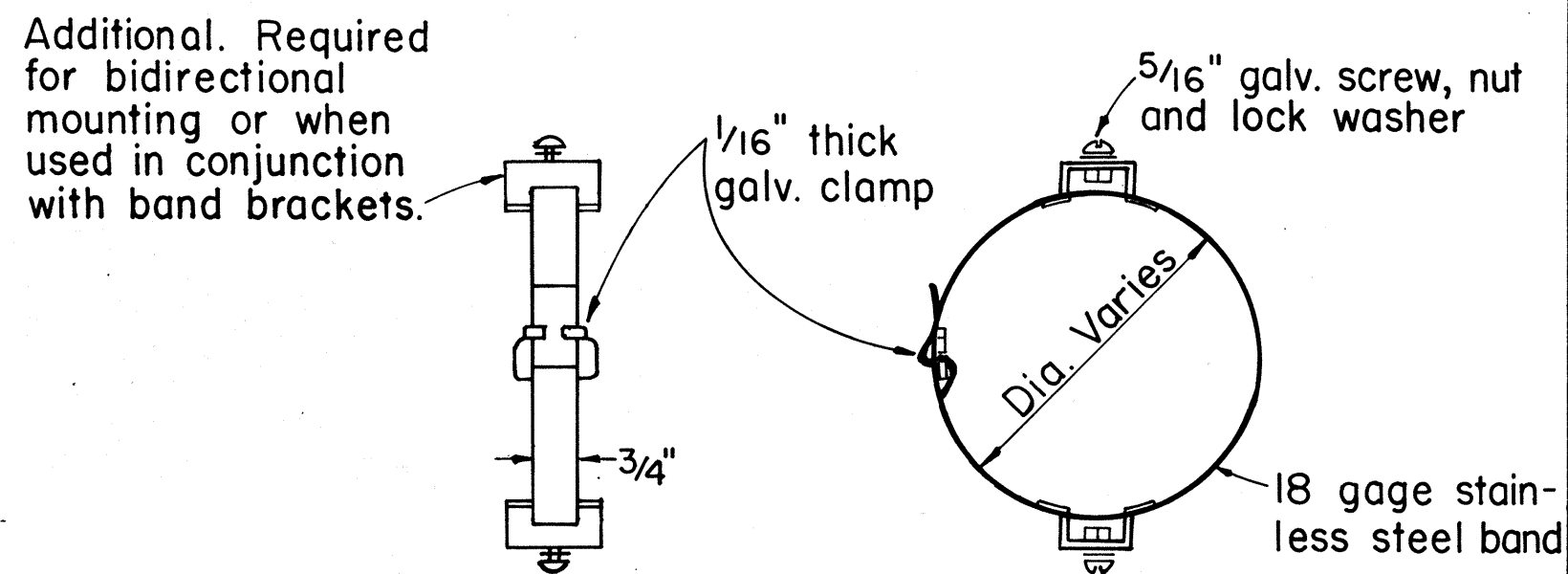
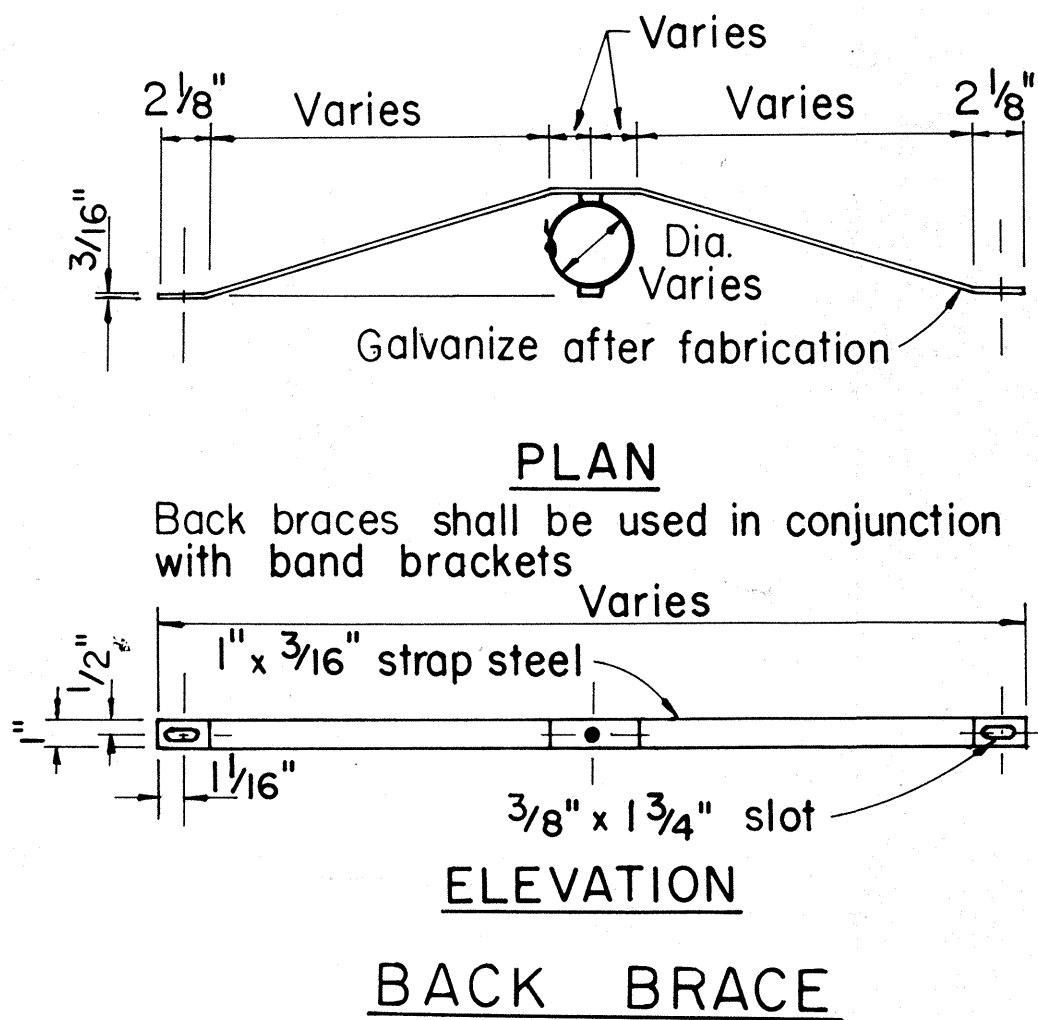
FED. ROAD DIST. NO.	STATE	FED. AID PROJ. NO.	FISCAL YEAR	SHEET NO.	TOTAL SHEETS
HAWAII	HAW.	HES-093-1(8)	1986	75-1	9

GENERAL NOTES

- Signs shall be placed in conformance with positions shown and described in the "Manual on Uniform Traffic Control Devices for Streets and Highways", 1978, Part II, Section 2A-21, as amended, and as supplemented herein.
- Sign 48" and wider or larger than 10 sq. ft. in area shall be mounted on two or more sign posts except as noted below.
- Signs 48" and wider or larger than 10 sq. ft. in area may be mounted on objects other than sign posts (i.e. on highway lighting poles) as follows:
 - Signs 48" and wider but less than 10 sq. ft. in area shall be mounted with a minimum of two sets of band bracket and back braces.
 - Signs larger than 10 sq. ft. and less than 28 sq. ft. in area shall be mounted with a minimum of two sets of band brackets and back braces.
 - Signs larger than 28 sq. ft. in area shall be mounted with a minimum of three sets of band bracket and back braces.
- All parking restriction signs with arrows shall be mounted 45° to the line of traffic flow.
- Sign posts shall extend 3 1/2" above each sign, where required, for attachment of City and County street name signs.
- (R) or (L) indicates right or left and shown on the plans.
- See plans for special details of signs along bikeways.
- The minimum lateral distances shown are guidelines and shall be exceeded whenever possible. The Contractor shall place signs at the maximum practical lateral distance from the edge of the traveled way up to 30 feet and shall utilize protected locations whenever possible. Final locations of all signs shall be approved by the Engineer.
- Signs in medians shall be placed at midpoint of median up to a maximum distance of 30 feet from the edge of traveled way. When appropriate, signs for opposing directions shall be placed back to back.
- Anchor bases shall be installed for all signpost installations, unless otherwise shown or directed. See sheets DT 100A and DT 100B.



GALVANIZED SQUARE TUBE OR FLANGED CHANNEL POST



BAND BRACKET

APPROVAL RECOMMENDED:
Eiichi Tanaka 10/14/83
 TRAFFIC ENGINEER DATE

APPROVED:
S. Jijiyama 10-18-83
 ASSISTANT CHIEF, ENGINEERING DATE

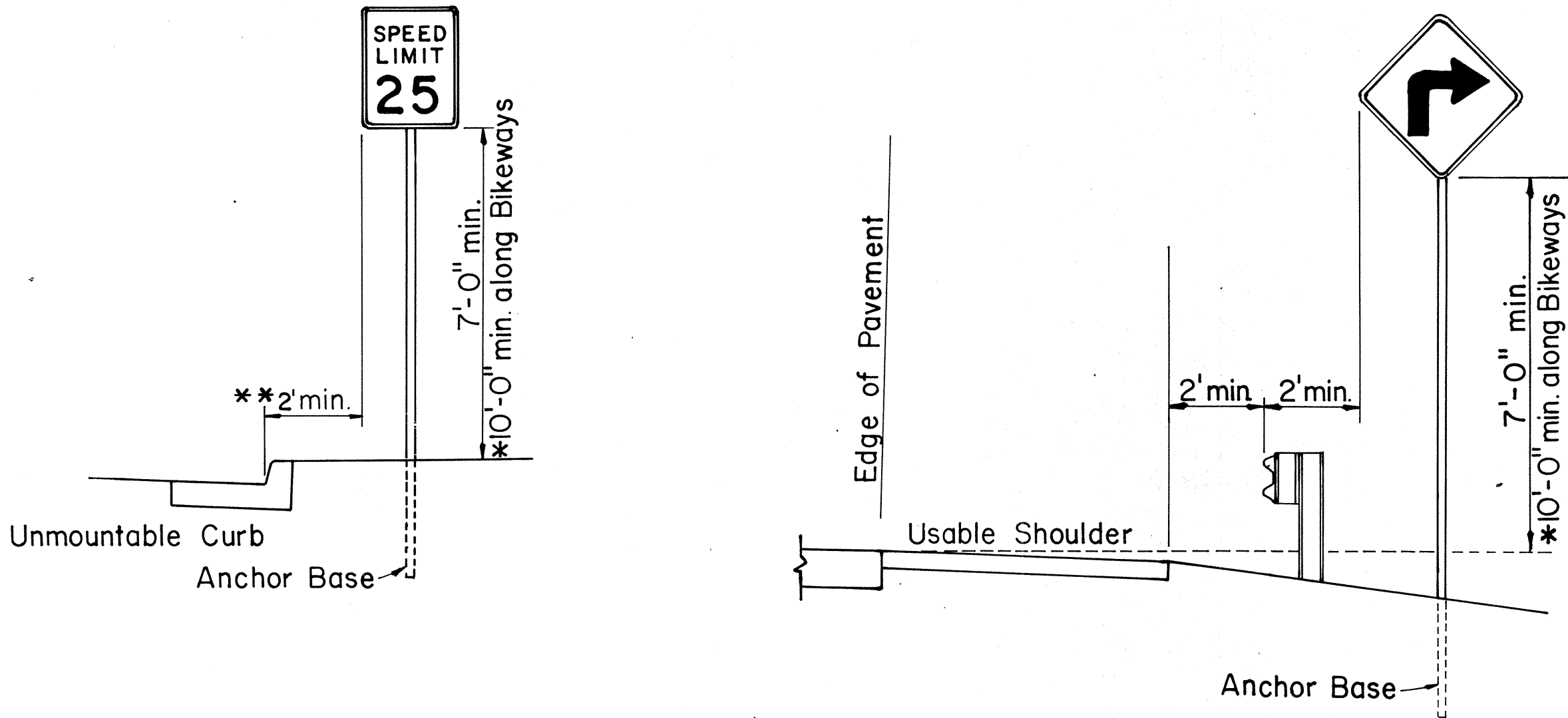
STATE OF HAWAII
 DEPARTMENT OF TRANSPORTATION
 HIGHWAYS DIVISION

STANDARD DETAILS
 MISCELLANEOUS SIGN DETAILS

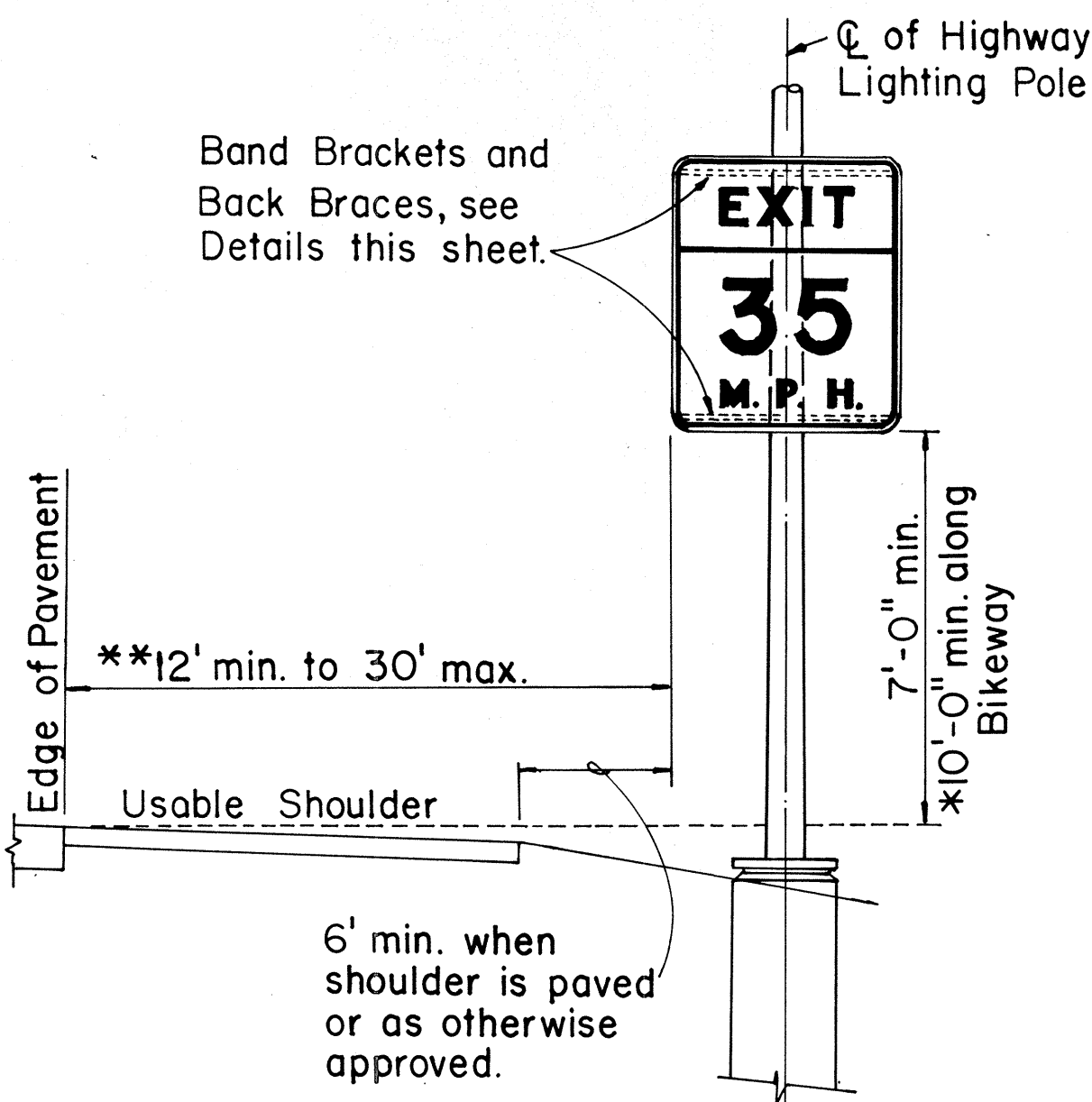
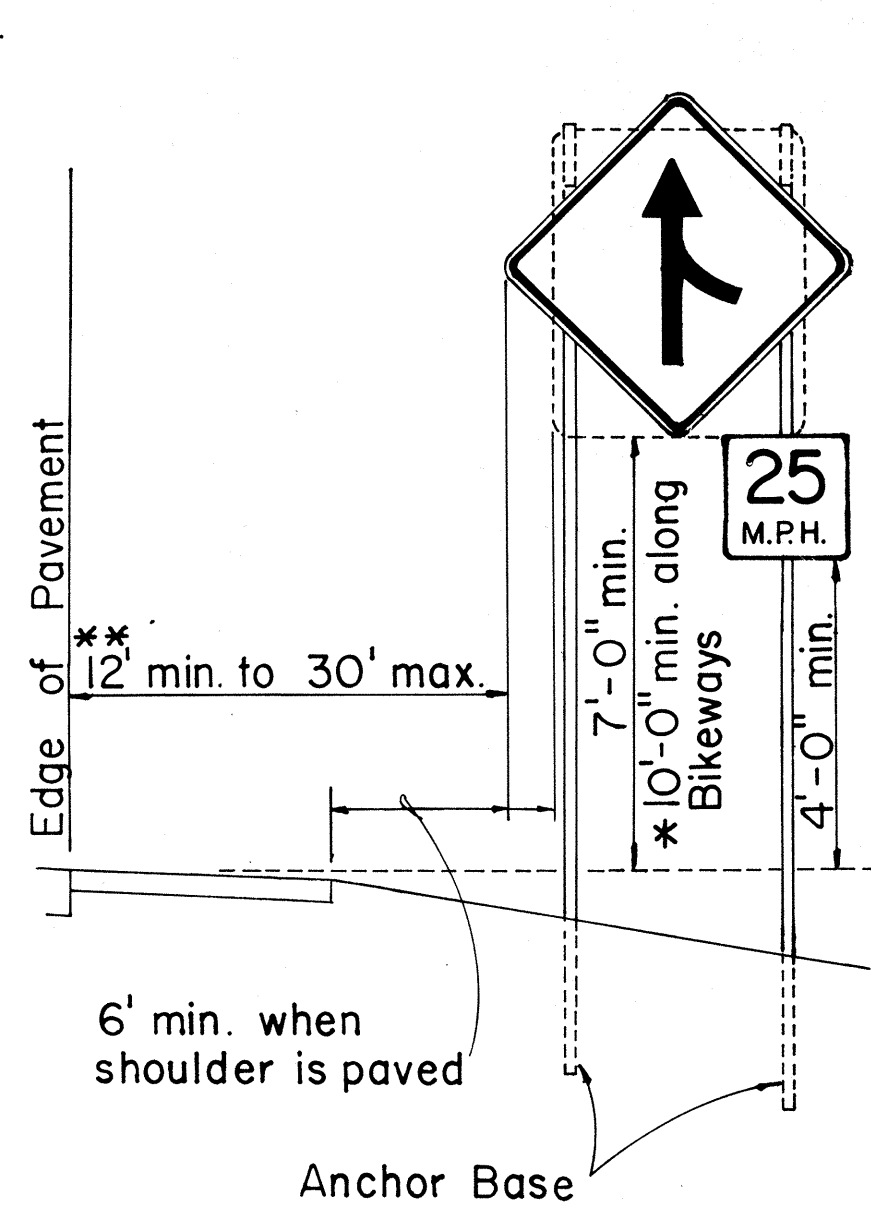
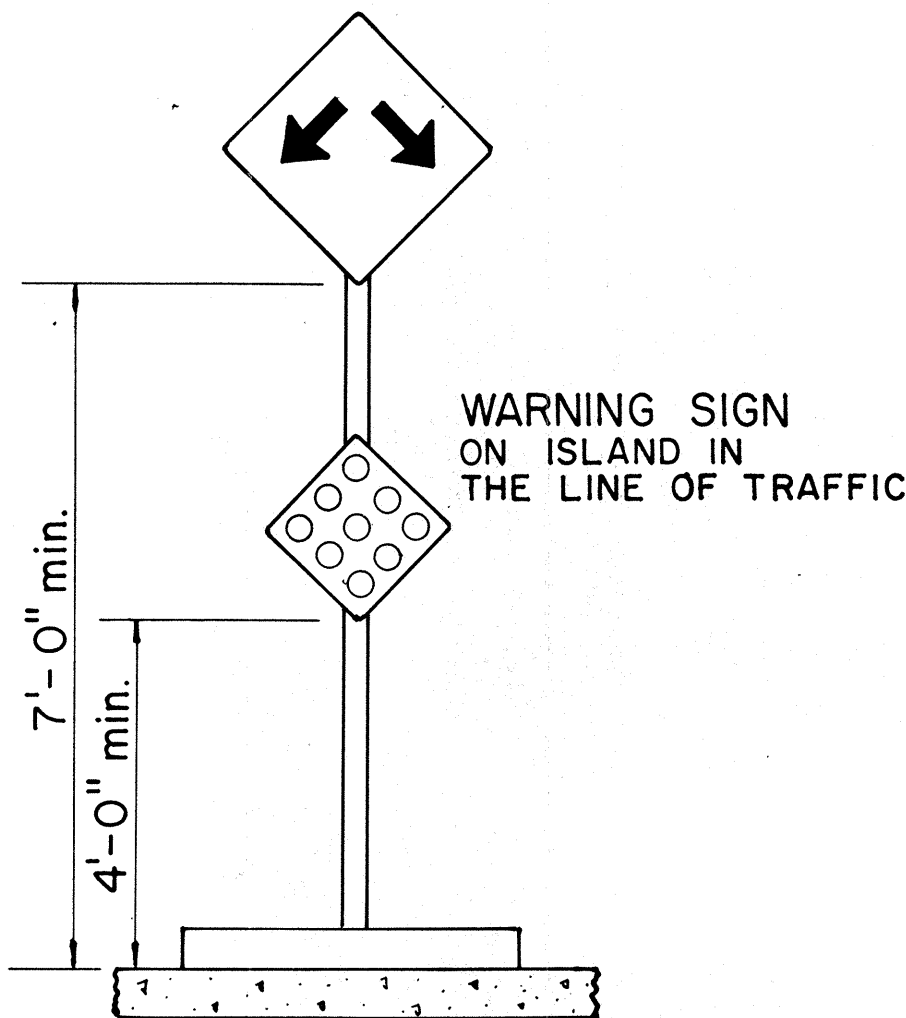
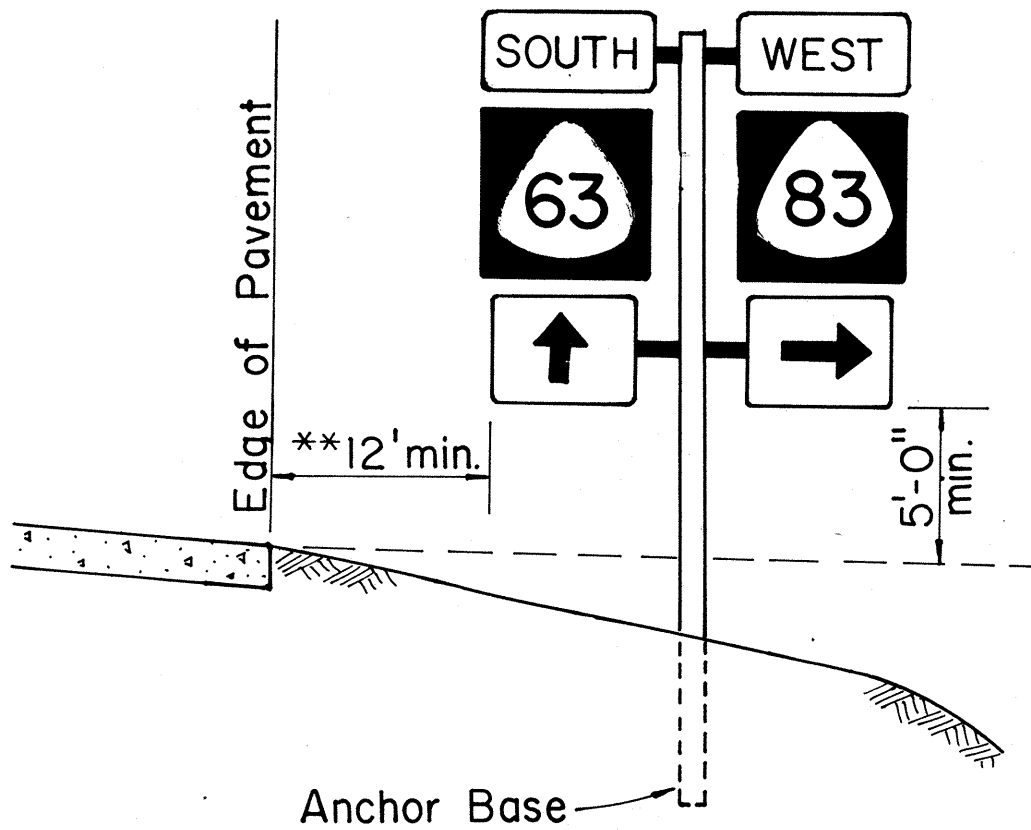
Not to Scale: Oct. 1983
 SHEET No. 1A OF 3 SHEETS DT 100

TYPICAL MOUNTING DETAILS

NO.	REVISION	APPROVED BY	DATE
1	Supercedes Sht. DT 100 approved 11/15/77	<i>[Signature]</i>	10-18-83



ROADSIDE ASSEMBLY RURAL DISTRICT



HEIGHT AND LATERAL LOCATION OF SIGNS TYPICAL INSTALLATION

FED. ROAD DIST. NO.	STATE	FED. AID PROJ. NO.	FISCAL YEAR	SHEET NO.	TOTAL SHEETS
HAWAII	HAW.	HES-093-1(8)	1986	8	9



CW20-1a 48" x 48"



CW20-2d 48" x 48"



CW20-3b 48" x 48"



CW20-4d 48" x 48"



CW20-5d(L) 48" x 48"



CW20-7c 36" x 36"
24" x 18"
CW20-7c-A 48" x 48"
24" x 18"



CW21-1 30" x 30"



CW21-2 30" x 30"



CW21-3 36" x 36"



CW21-4 36" x 36"



CW21-5 30" x 30"



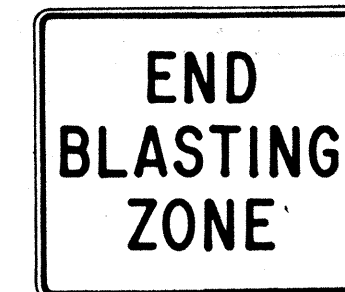
CW21-6 30" x 30"



CW22-1b 48" x 48"



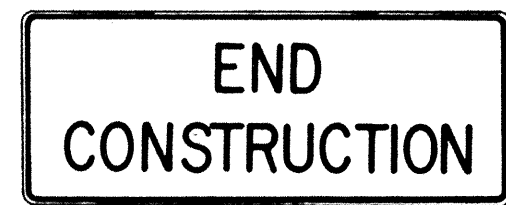
CW22-2 42" x 36"



CW22-3 42" x 36"



CG20-1(5) 60" x 36"



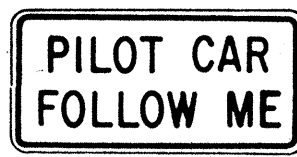
CG20-2 60" x 24"



CM4-9(R) 30" x 24"



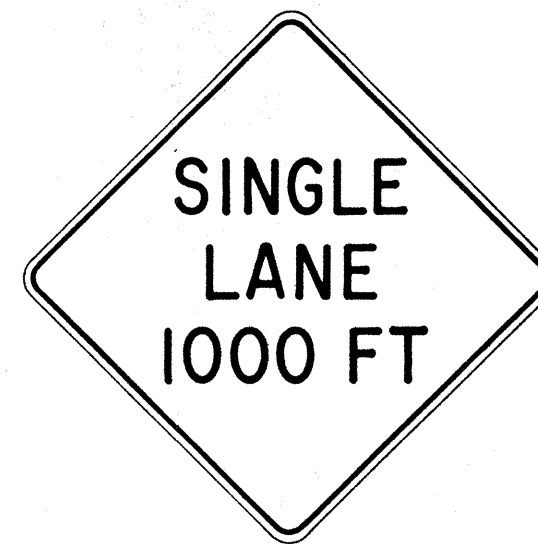
CM4-10(R) 48" x 18"



CG20-4 36" x 18"



CW23-1 36" x 36"



CW23-2b 48" x 48"



CW23-3(R) 48" x 48"

GENERAL NOTES

- Sign details shall conform to the latest editions of FHWA publications "Manual on Uniform Traffic Control Devices for Streets and Highways," "Standard Alphabets for Highway Signs," and "Standard Highway Signs," and as amended.
- All construction signs shall be reflectorized.
- All construction signs shall have 3/8" bolt holes drilled at appropriate locations.
- Numerals in () indicates numerals to be inserted for sign message. (R) or (L) indicates right or left.
- For "CW" series signs, suffixes a, b, c and d are as follows:
a-1500 FT, b-1000 FT,
c-500 FT and d-AHEAD.

NO.	REVISION	APPROVED BY	DATE
1	Supersedes Sht. DT 104 Approved 12-30-69	H.T.	3/23/72
2	Revised General Note 1	H.T.	10/12/74
3	Revised General Note 2	H.T.	9-16-75
4	Revised General Note 2 and sign CG20-1(5)	H.T.	9-14-76
5	Revised General Note 1 and sign CW20-7c	E.T.	9/18/85

APPROVAL RECOMMENDED:
Erich Tanaka 3/21/72
TRAFFIC ENGINEER DATE

APPROVED:
Shirley S. Salsich 9/23/72
ASSISTANT CHIEF, ENGINEERING DATE

STATE OF HAWAII
DEPARTMENT OF TRANSPORTATION
HIGHWAYS DIVISION

STANDARD DETAILS
CONSTRUCTION SIGNS

NOT TO SCALE

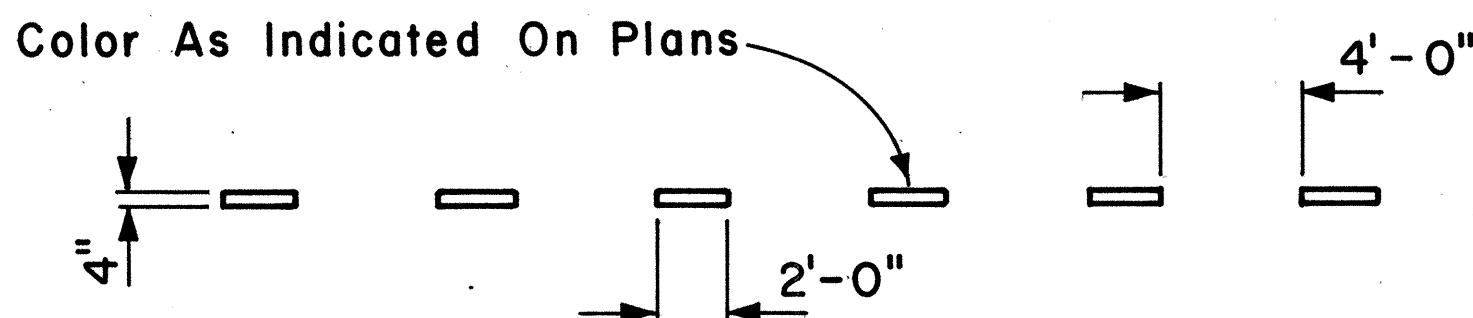
SHEET No. 2 OF 3 SHEETS DT 104

DATE	_____
SURVEY PLOTTED BY	_____
DRAWN BY	_____
REVIEWED BY	_____
QUANTITIES BY	_____
CHECKED BY	_____
ORIGINAL PLAN	_____
NOTE BOOK	_____
No.	_____

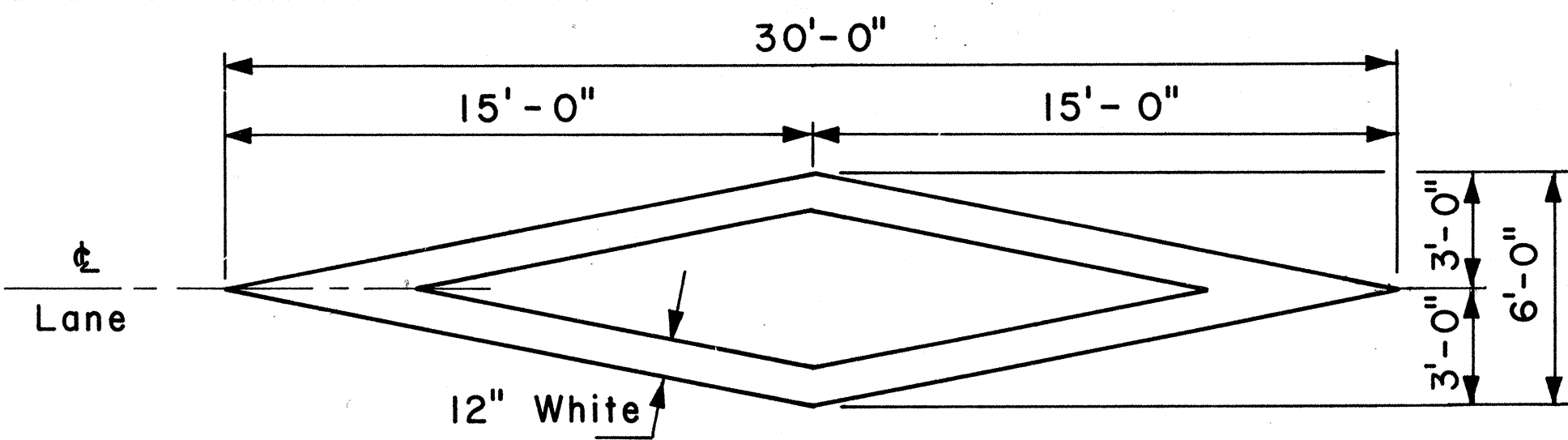
FED. ROAD DIST. NO.	STATE	FED. AID PROJ. NO.	FISCAL YEAR	SHEET NO.	TOTAL SHEETS
HAWAII	HAW.	HES-093-1(8)	1986	3	3

GENERAL NOTES:

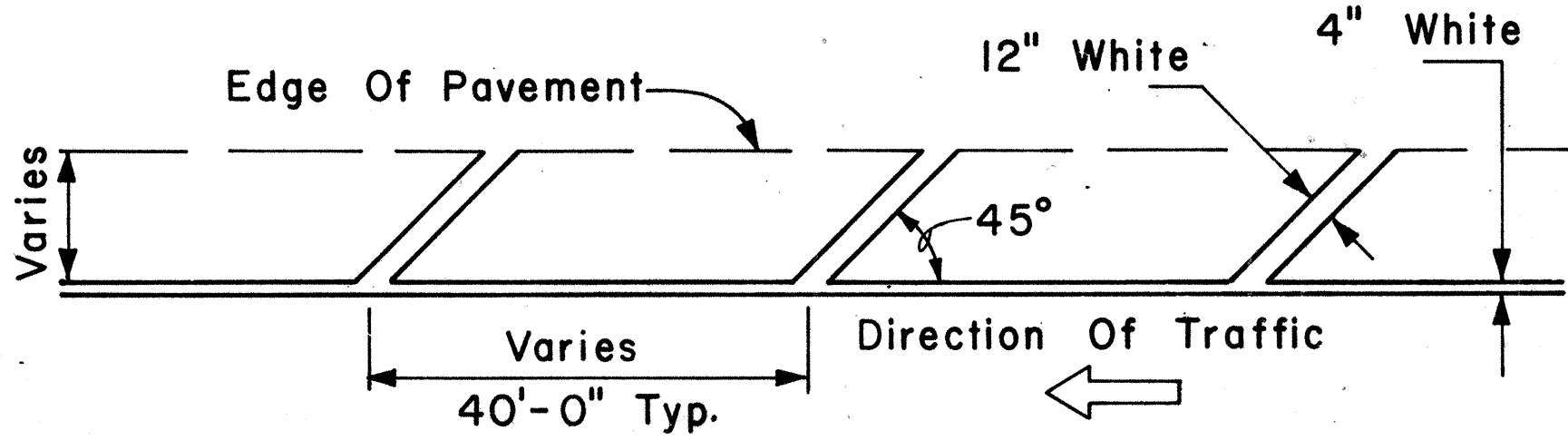
1. Pavement marking and striping shall conform to the latest edition of the "Manual on Uniform Traffic Control Devices for Streets and Highways," by the FHWA, and as amended.
2. Layout of pavement markings and striping shall be done by the Contractor. The Contractor shall check layout of markings and striping with the Engineer prior to performing work.
3. For additional pavement marking details, see sheet DT 300.



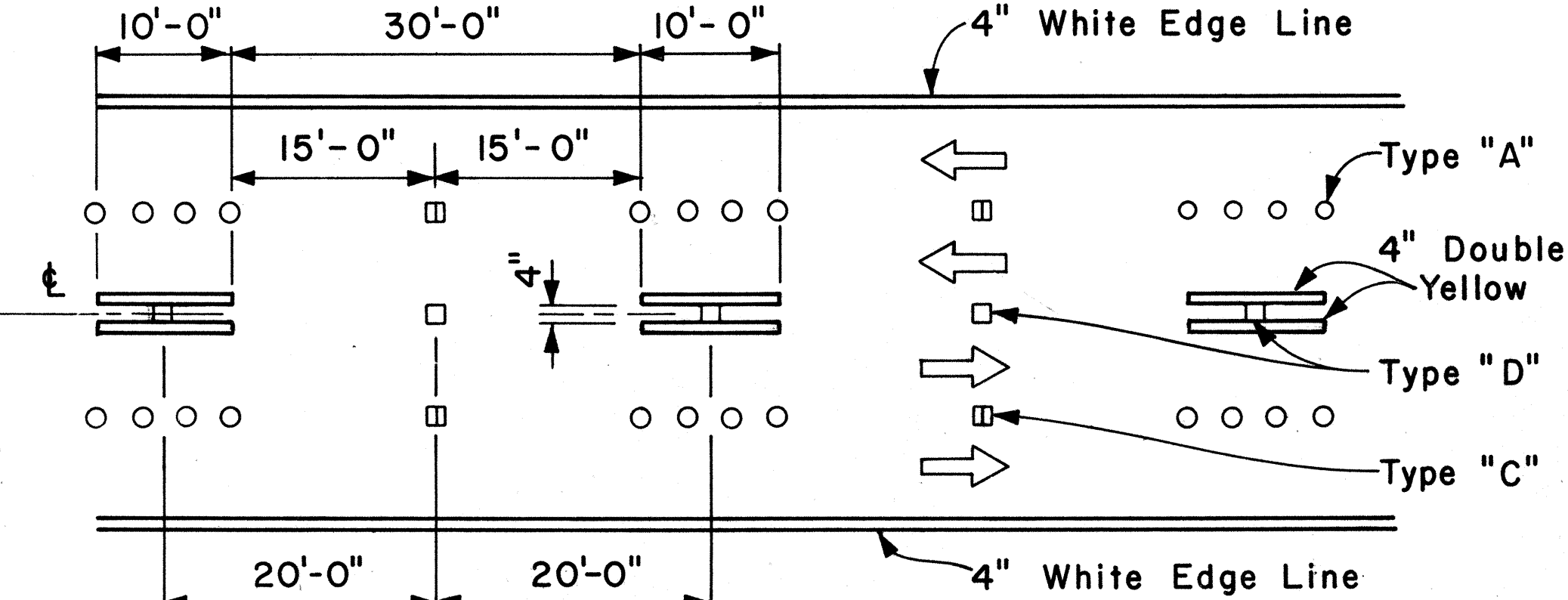
4" GUIDE LINE



PAVEMENT DIAMOND

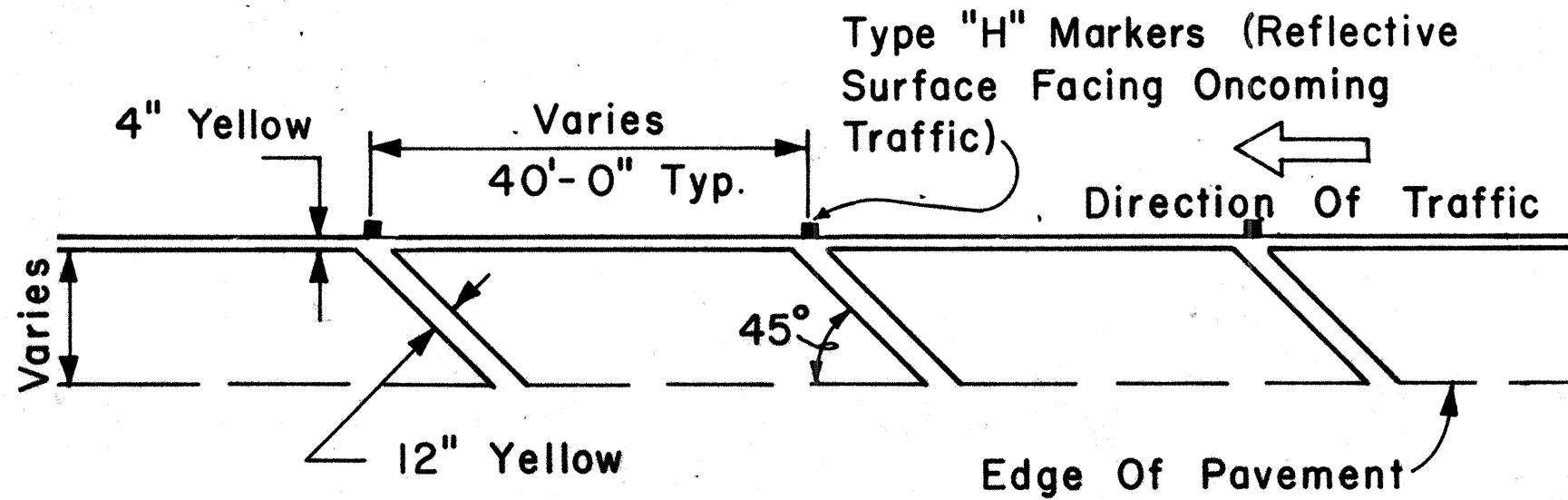


TRANSVERSE RIGHT SHOULDER MARKING

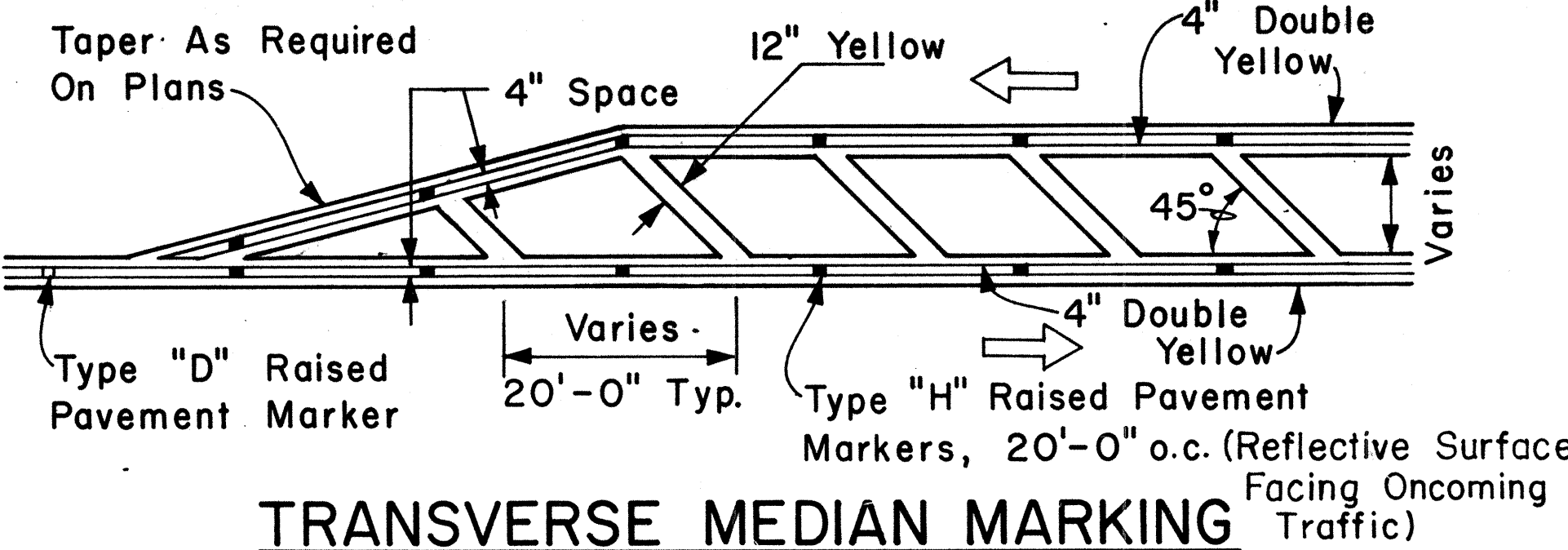


NOTE: Traffic Cone Usage Required.

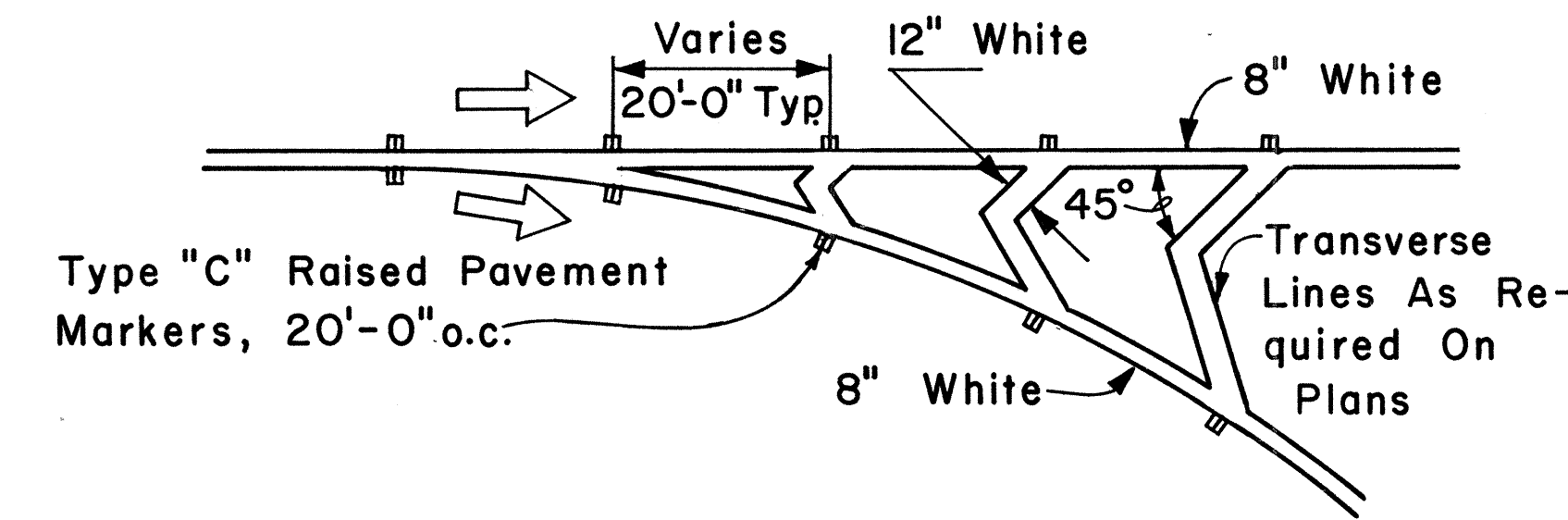
MULTI-LANE REVERSIBLE LANES



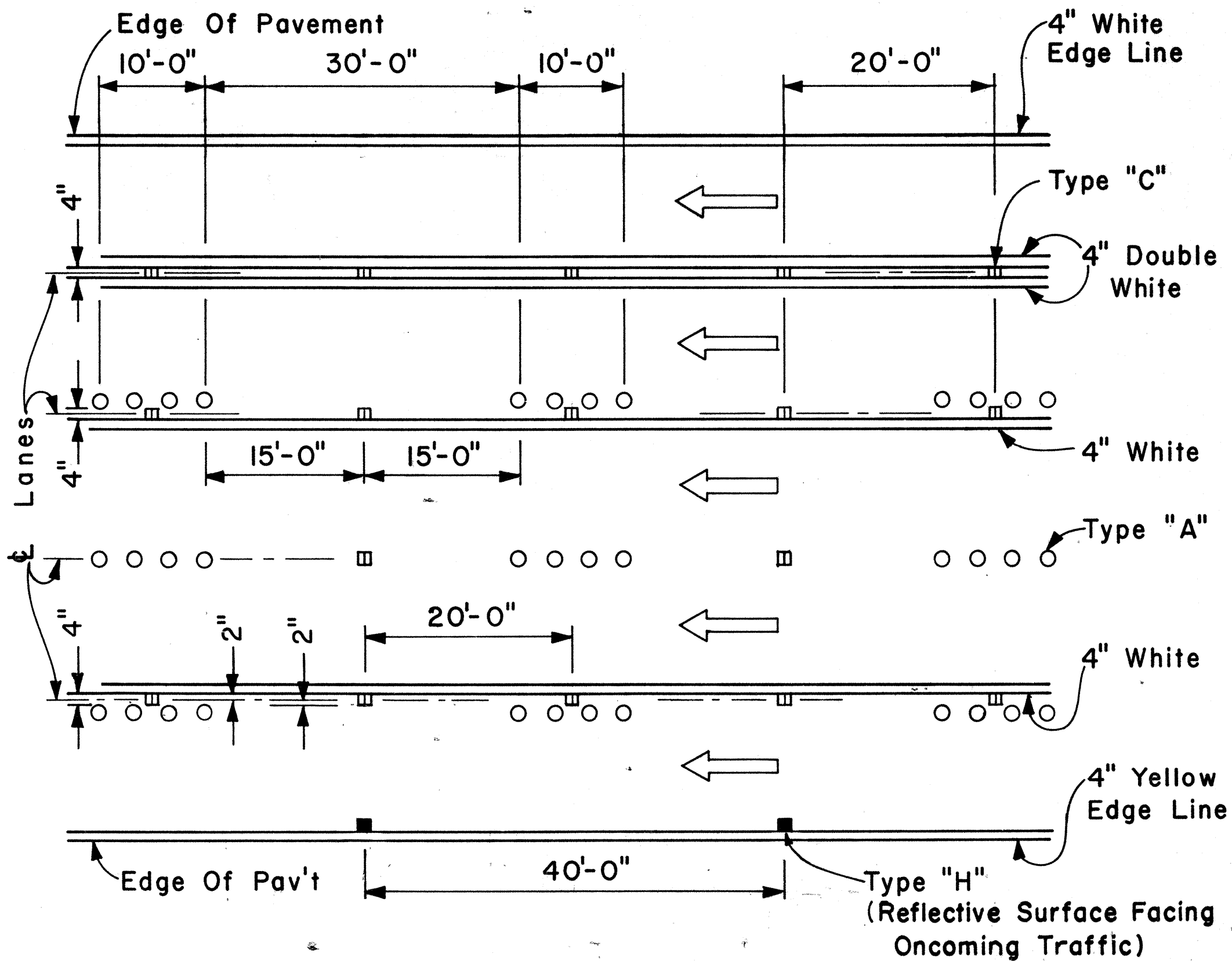
TRANSVERSE LEFT SHOULDER MARKING



TRANSVERSE MEDIAN MARKING



CHANNELIZING ISLAND



MULTI-LANE LANE CHANGE RESTRICTION ZONES

APPROVAL RECOMMENDED: *Eishi Tanaka* 5/2/78
TRAFFIC ENGINEER DATE

APPROVED: *Herbert S. Zaksch* 5/2/78
ASSISTANT CHIEF, ENGINEERING DATE

NO.	REVISION	APPROVED BY	DATE
1	Revised Transverse left Shoulder Marking, Channelizing Island & Lane Change Restriction Zones.	E.T.	5/10/78

STATE OF HAWAII
DEPARTMENT OF TRANSPORTATION
HIGHWAYS DIVISION

STANDARD DETAILS

MISCELLANEOUS
PAVEMENT MARKINGS

Scale: Not to Scale Date: April, 1978

SHEET NO. 3 OF 3 SHEETS DT 302