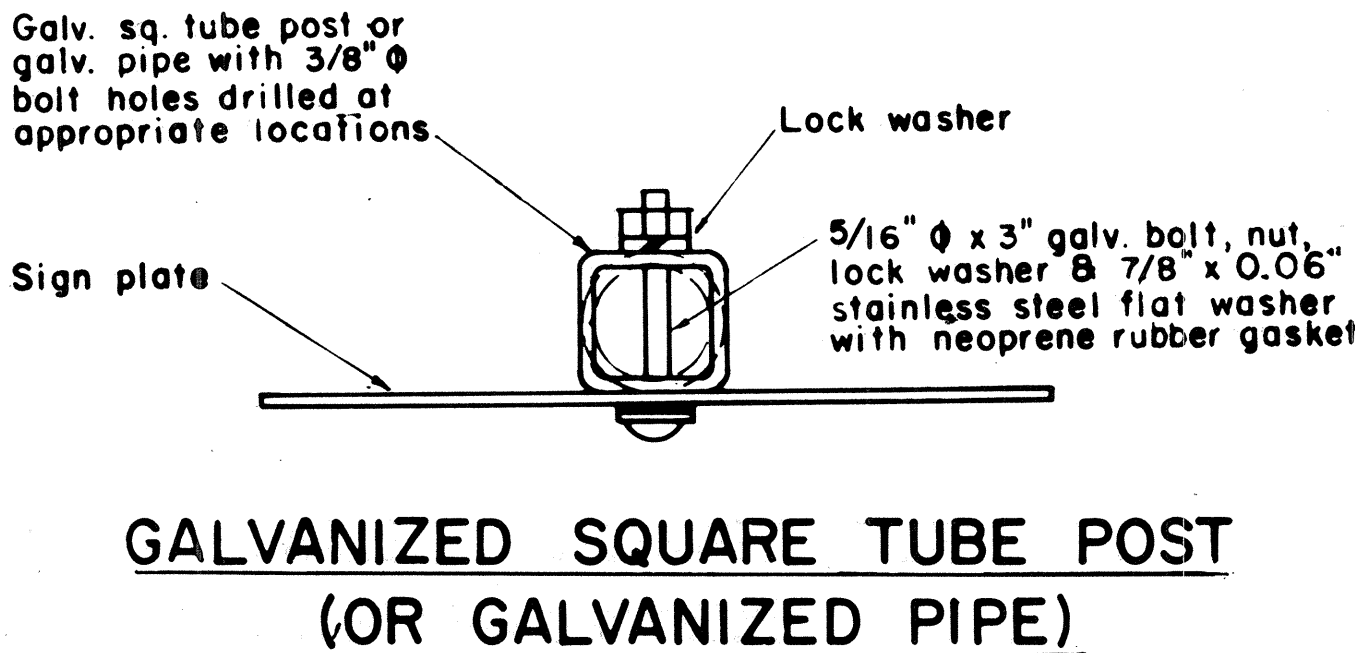
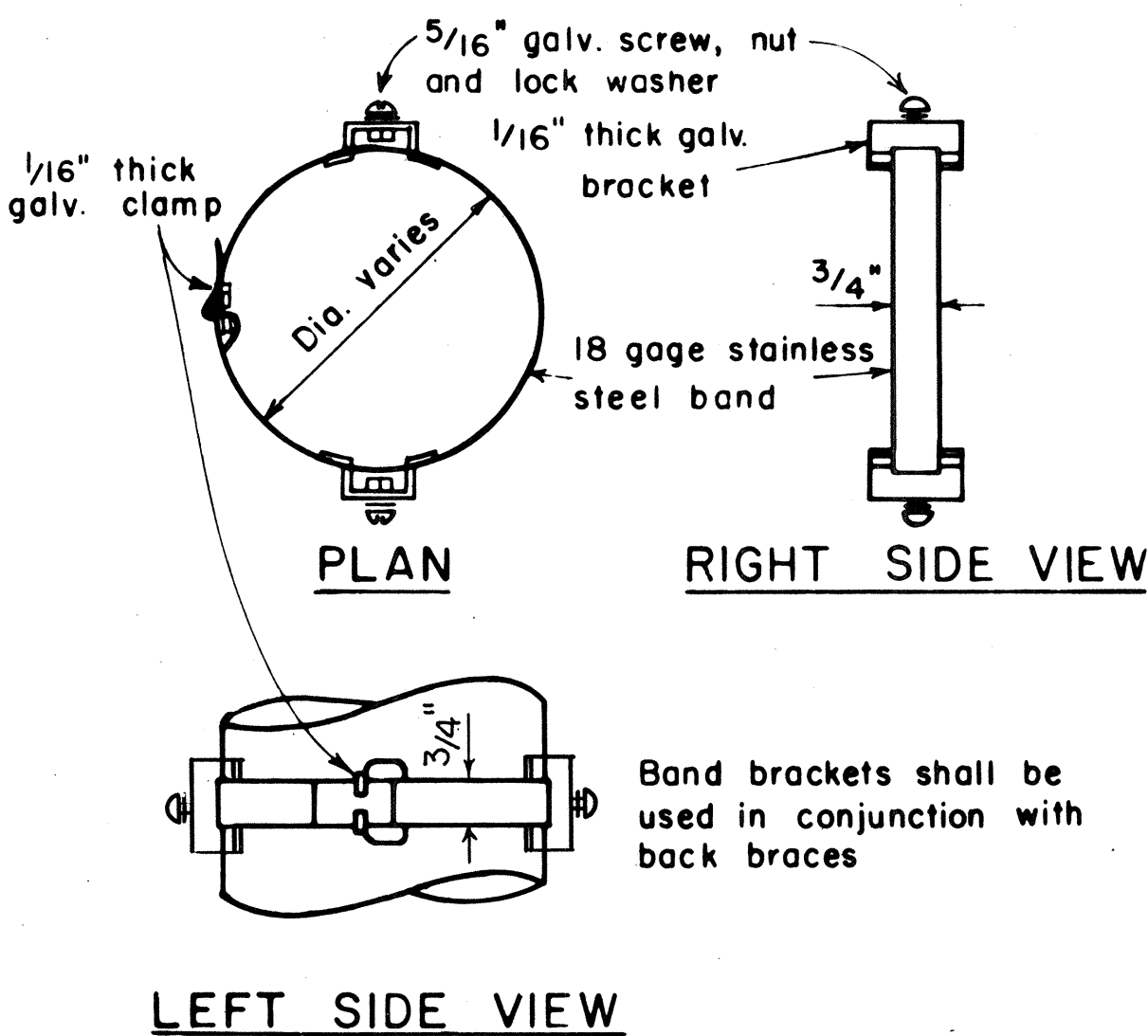
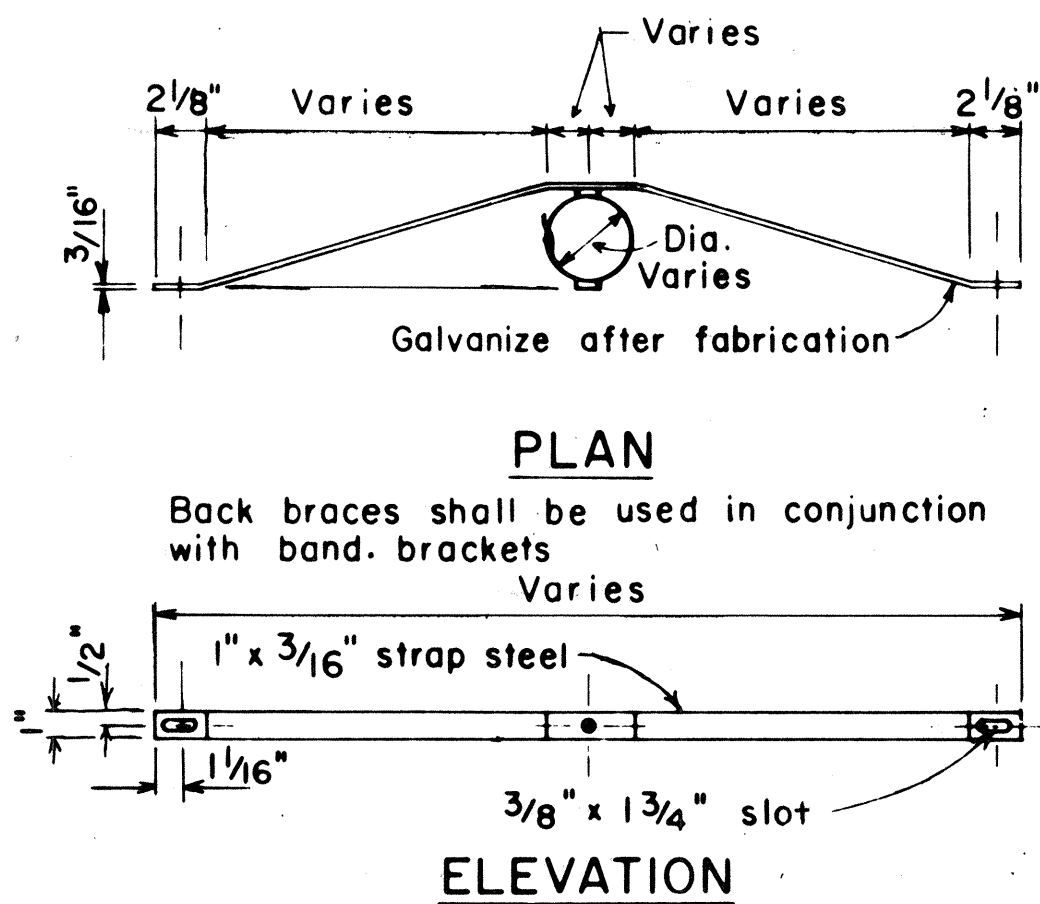


FED. ROAD DIST. NO.	STATE	PROJ. NO.	FISCAL YEAR	SHEET NO.	TOTAL SHEETS
HAWAII	HAW.	HWY-0-02-82M	1982	2	3

GENERAL NOTES

- Signs shall be placed in conformance with positions shown and described in the "Manual on Uniform Traffic Control Devices for Streets and Highways", 1978, Part II, Section 2A-21, as amended, and as supplemented herein.
- Signs 48" and wider or larger than 10 sq. ft. in area shall be mounted on two sign posts except as noted below.
- Signs 48" and wider or larger than 10 sq. ft. in area may be mounted on other than two sign posts (i.e. on highway lighting poles).
 - Signs larger than 10 sq. ft. and less than 28 sq. ft. in area shall be mounted with a minimum of two sets of band brackets and back braces.
 - Signs larger than 28 sq. ft. in area shall be mounted with a minimum of three sets of band brackets and back braces.
- All parking restriction signs with arrows shall be mounted 45° to the line of traffic flow.
- Sign posts shall extend 3 1/2" above each sign, where required, for attachment of City and County street name signs.
- (R) or (L) indicates right or left and shall be shown on the plans.
- See plans for special details.
- The minimum lateral distances shown are guidelines and shall be exceeded whenever possible. The Contractor shall place signs at the maximum practical lateral distance from the edge of the traveled way up to 30 feet and shall utilize protected locations whenever possible. Final locations of all signs shall be approved by the Engineer.
- Signs in medians shall be placed at midpoint of median up to a maximum distance of 30 feet from the edge of traveled way. When appropriate, signs for opposing directions shall be placed back to back.

BACK BRACE DETAILS
FOR BALANCED SIGN INSTALLATION



BAND BRACKET
TYPICAL MOUNTING DETAILS
NOT TO SCALE

NO.	REVISION	APPROVED BY	DATE
1	Supersedes Sht. DT-100 approved 12/30/69	H.T.	11/15/11
2	Revised depth of signpost	H.T.	5/8/19
3	Added Notes No. 8 & No. 9	H.T.	5/18/19
4	Revised Gen. Note #4 & Mounting Details	H.T.	4/23/80
5	Revised General Notes, Lateral Sign Locations and Mounting Details	H.T.	5/15/81

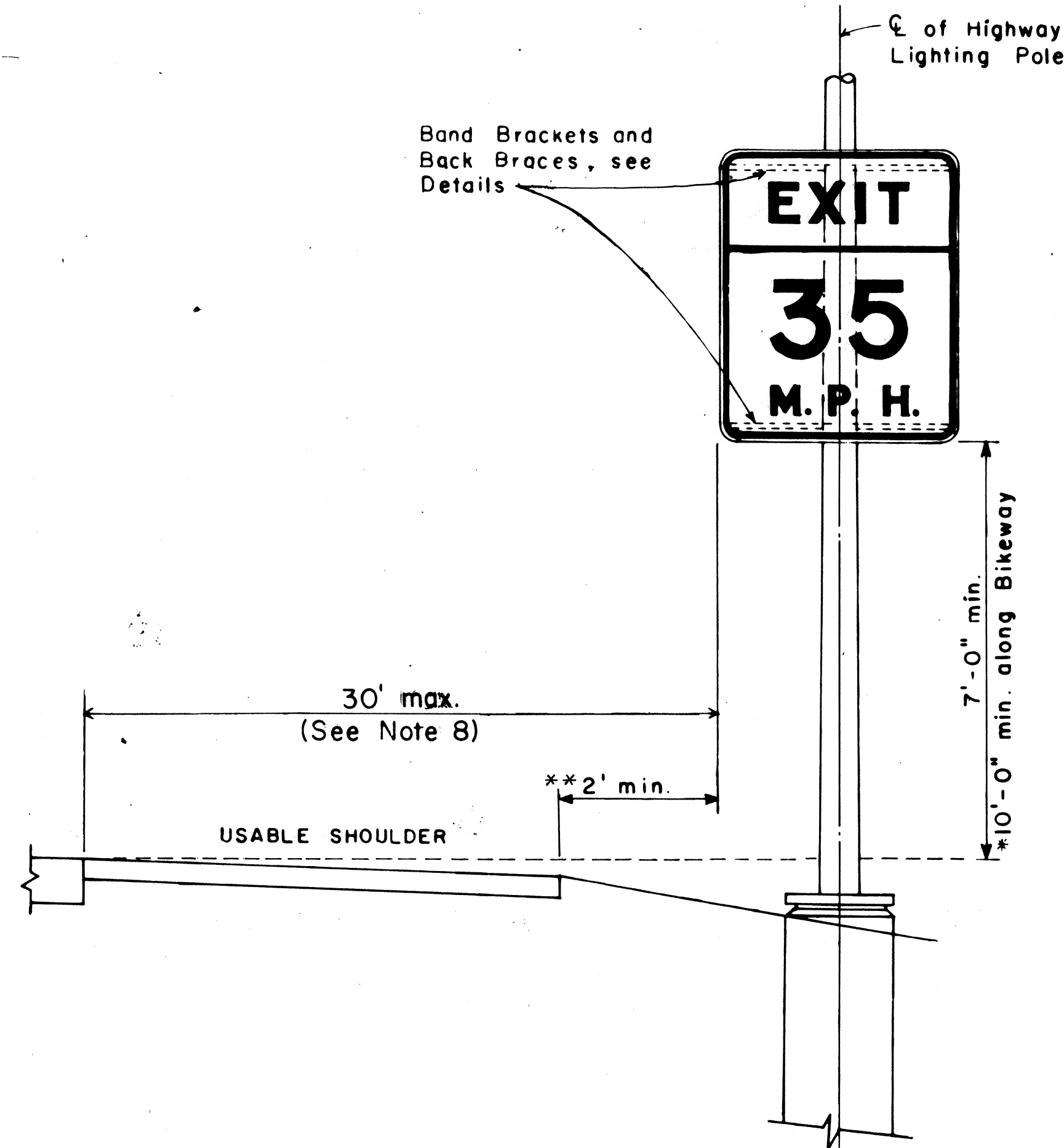
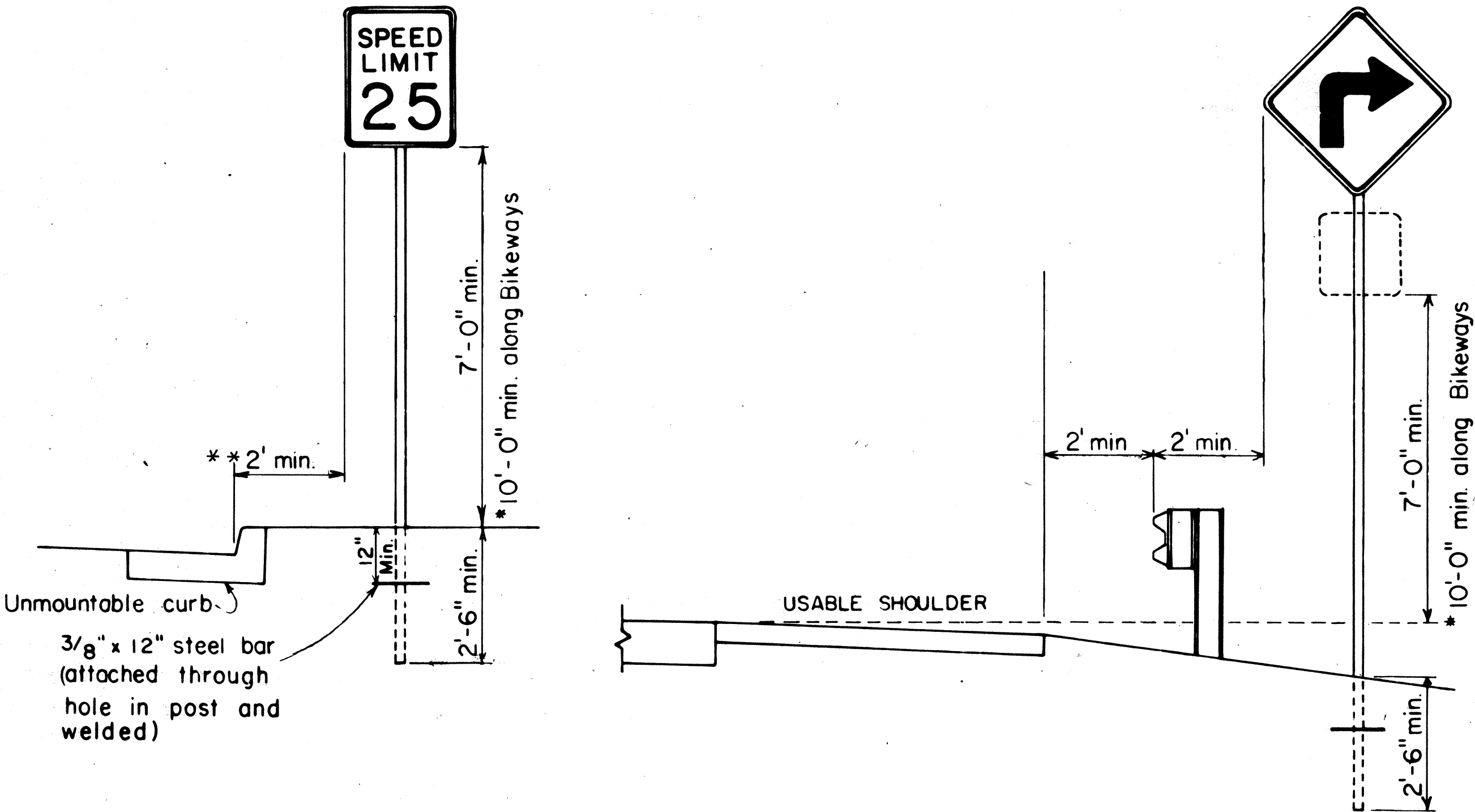
APPROVAL RECOMMENDED:
Barbette S. Sakai 11/10/77
TRAFFIC ENGINEER DATE

APPROVED:
Barbette S. Sakai 11/15/11
ASSISTANT CHIEF, ENGINEERING DATE

STATE OF HAWAII
DEPARTMENT OF TRANSPORTATION
HIGHWAYS DIVISION

STANDARD DETAILS
MISCELLANEOUS SIGN DETAILS

Not to scale June, 1977



HEIGHT AND LATERAL LOCATION OF SIGNS
TYPICAL INSTALLATION

DATE	11/15/11
SURVEY PLATTED BY	H.T.
DRAWN BY	H.T.
DESIGNED BY	H.T.
NOTE BOOK	
CHECKED BY	
ORIGINAL	
PLAN	
NO.	

FED. ROAD DIST. NO.	STATE	PROJ. NO.	FISCAL YEAR	SHEET NO.	TOTAL SHEETS
HAWAII	HAW.	HWY-0-0230M	1982	3	3



CW20-1a 48" x 48"



CW20-2d 48" x 48"



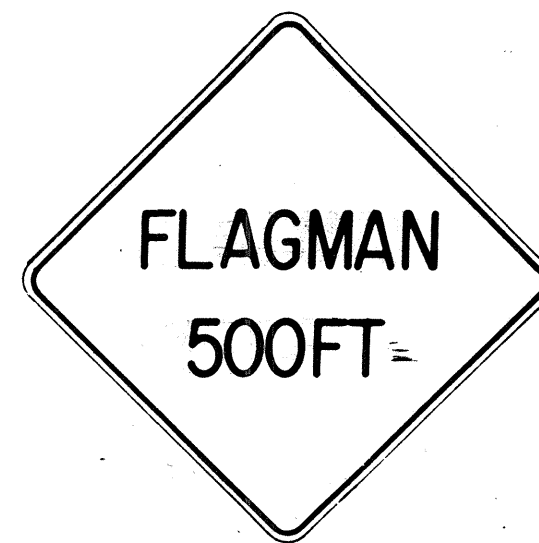
CW20-3b 48" x 48"



CW20-4d 48" x 48"



CW20-5d(L) 48" x 48"



CW20-7c 48" x 48"



CW21-1 30" x 30"



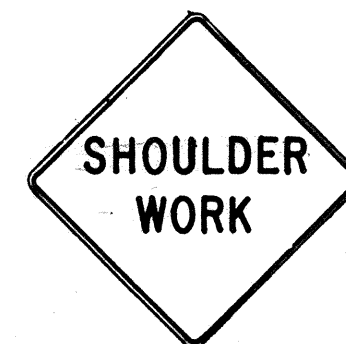
CW21-2 30" x 30"



CW21-3 36" x 36"



CW21-4 36" x 36"



CW21-5 30" x 30"



CW21-6 30" x 30"



CW22-1b 48" x 48"



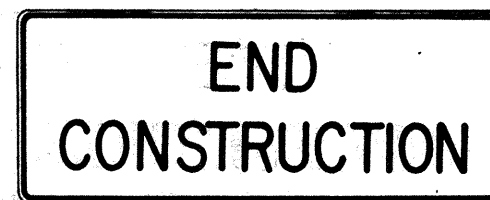
CW22-2 42" x 36"



CW22-3 42" x 36"



CG20-1(5) 60" x 36"



CG20-2 60" x 24"



CM4-9(R) 30" x 24"



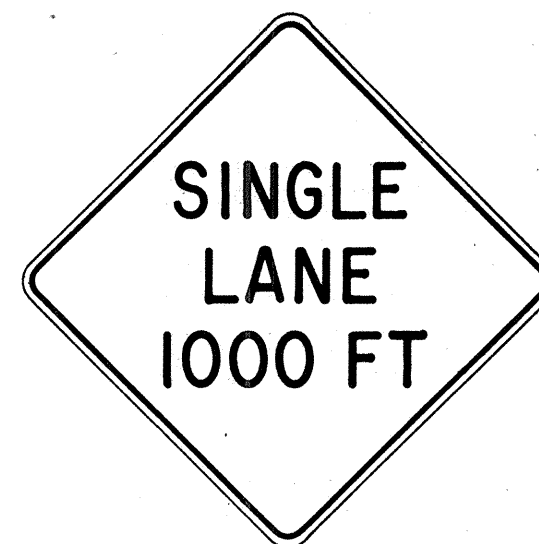
CM4-10(R) 48" x 18"



CG20-4 36" x 18"



CW23-1 36" x 36"



CW23-2b 48" x 48"



CW23-3(R) 48" x 48"

GENERAL NOTES

- Sign details shall conform to the FHWA publications "Manual on Uniform Traffic Control Devices for Streets and Highways," 1971, and "Standard Highway Signs," 1972, and as amended.
- All construction signs shall be reflectorized.
- All construction signs shall have 3/8" bolt holes drilled at appropriate locations.
- Numerals in () indicates numerals to be inserted for sign message. (R) or (L) indicates right or left.
- For "CW" series signs, suffixes a,b,c and d are as follows:
a-1500 FT, b-1000 FT,
c-500 FT and d-AHEAD.

NO.	REVISION	APPROVED BY	DATE
1	Supersedes Sht. DT 104 Approved 12-30-69	H.T.	3/25/72
2	Revised General Note 1	H.T.	10/16/74
3	Revised General Note 2	M.	9-16-75
4	Revised General Note 2 and sign CG20-1(5)	H.T.	9-14-76

APPROVAL RECOMMENDED:
Eugene Tanaka 3/21/72
 TRAFFIC ENGINEER DATE

APPROVED:
Walter Saleh 3/23/72
 ASSISTANT CHIEF, ENGINEERING DATE

STATE OF HAWAII

DEPARTMENT OF TRANSPORTATION

HIGHWAYS DIVISION

STANDARD DETAILS

CONSTRUCTION SIGNS

NOT TO SCALE

SHEET No.

OF

SHEETS DT 104

DESIGNED BY	DATE
DRAWN BY	" "
CHECKED BY	" "
NOTED BY	" "
NO.	" "