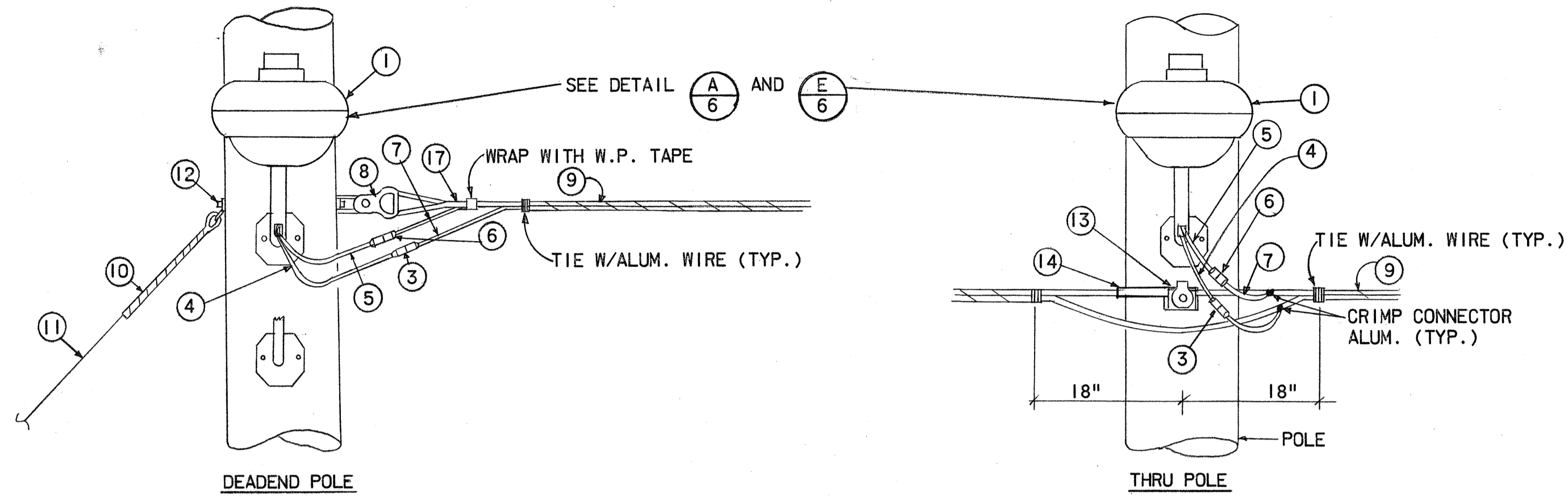
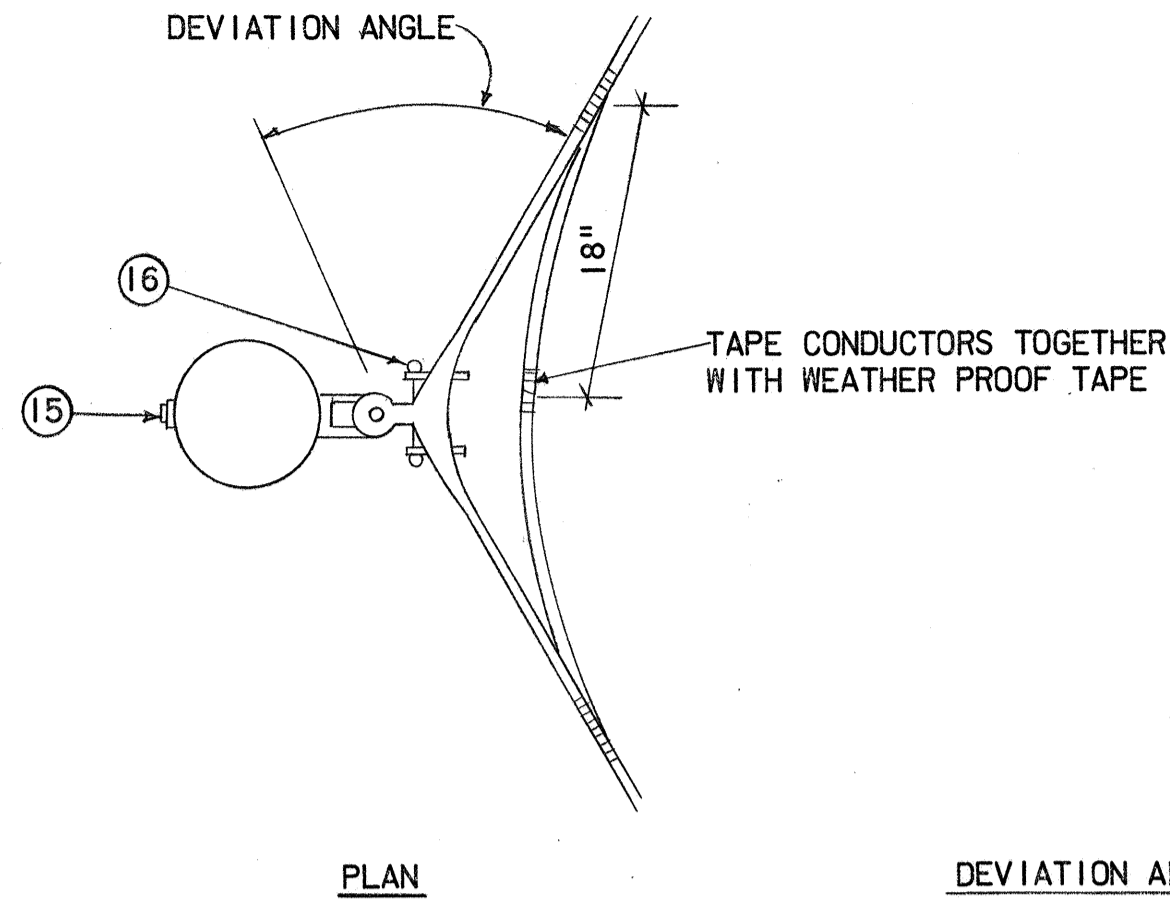


FED. ROAD DIST. NO.	STATE	PROJ. NO.	FISCAL YEAR	SHEET NO.	TOTAL SHEETS
HAWAII	HAW.	93B-01-72	1973	5	6

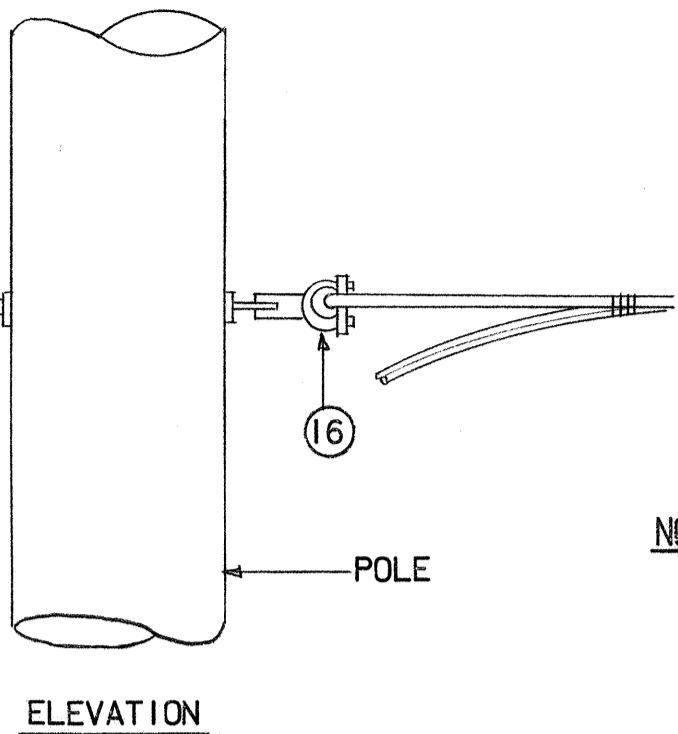


DETAIL A/5
N.T.S.

DETAIL B/5
N.T.S.



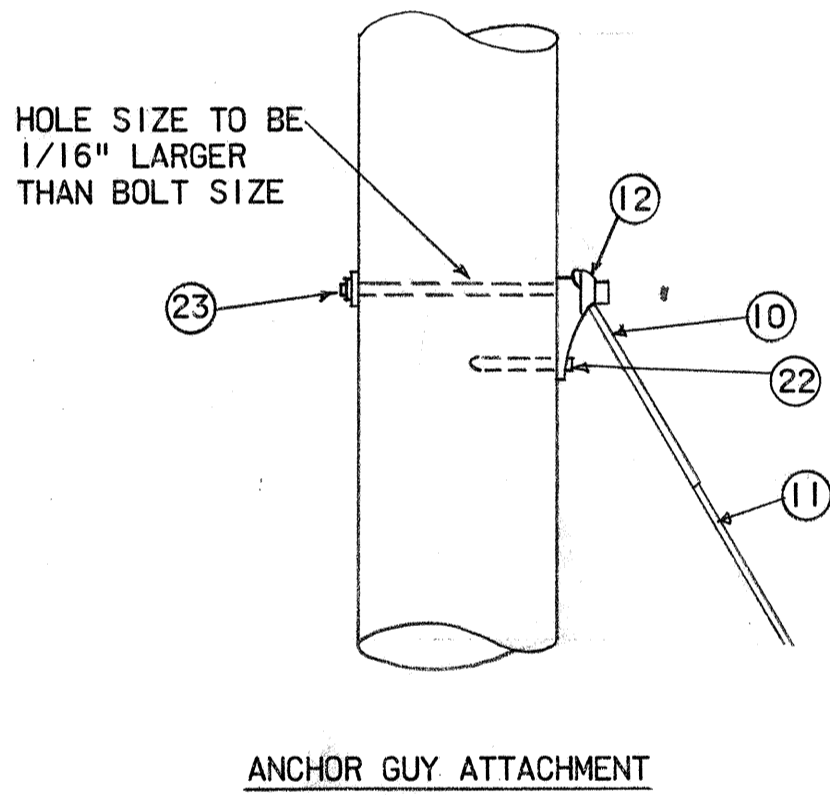
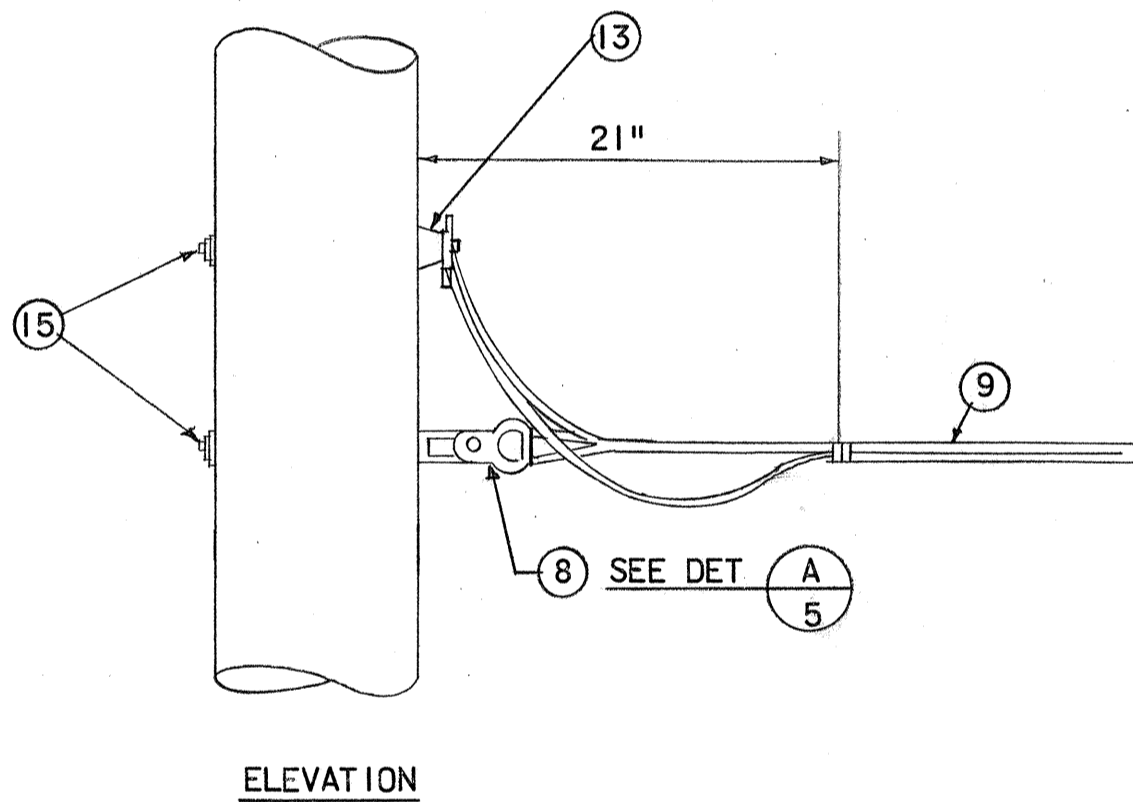
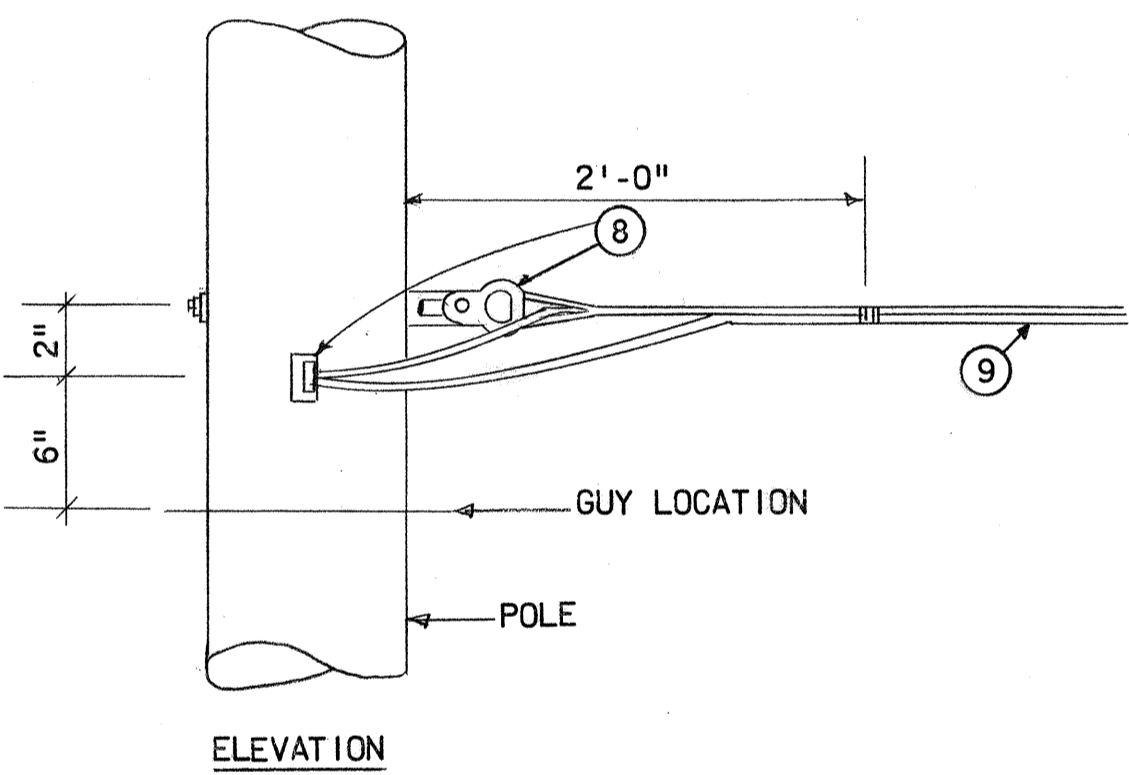
DEVIATION ANGLE 10° - 30°
ANGLE POLE



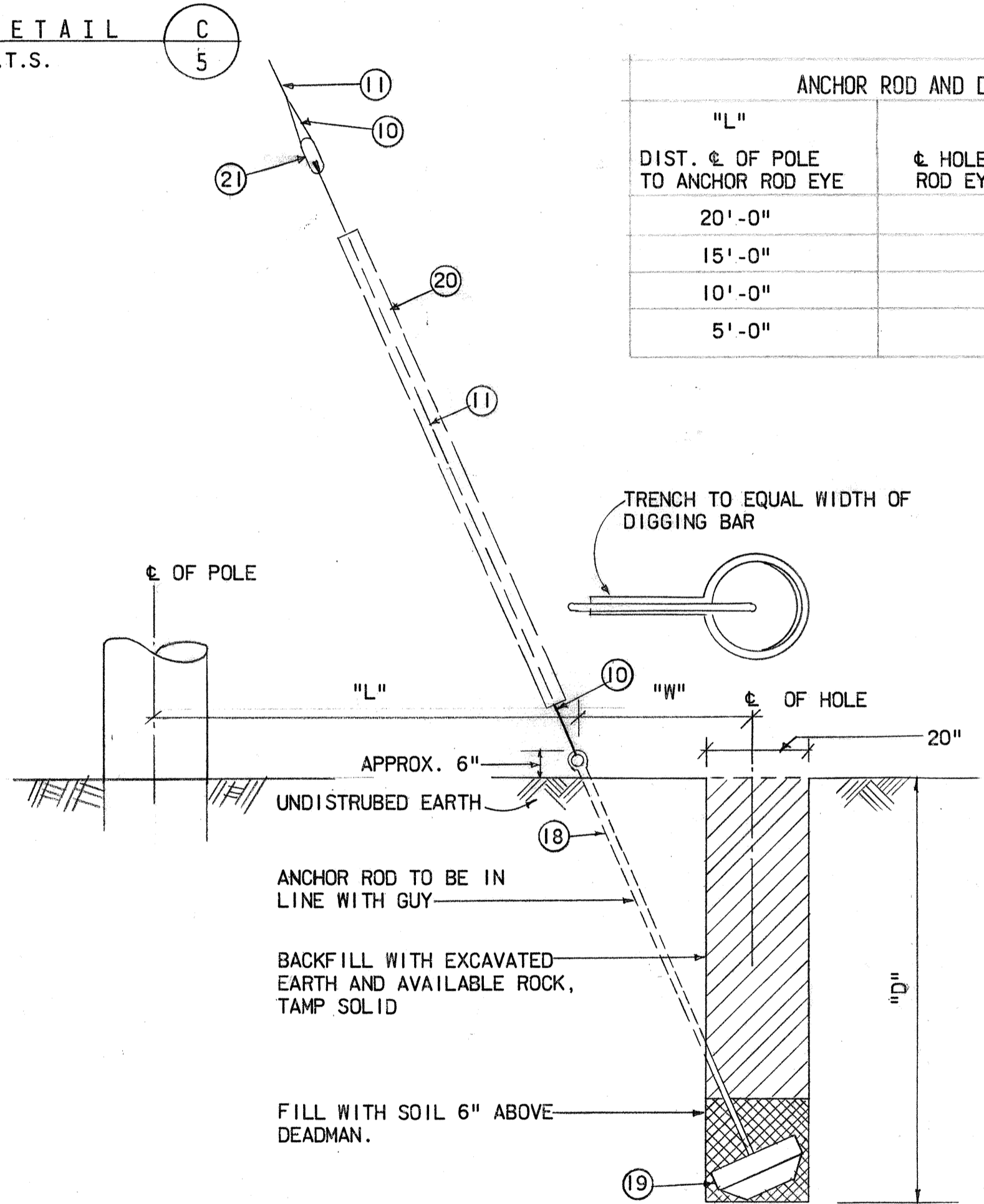
NOTE:
1. SEE SHEET 6 FOR LIST OF MATERIAL

DETAIL C/5
N.T.S.

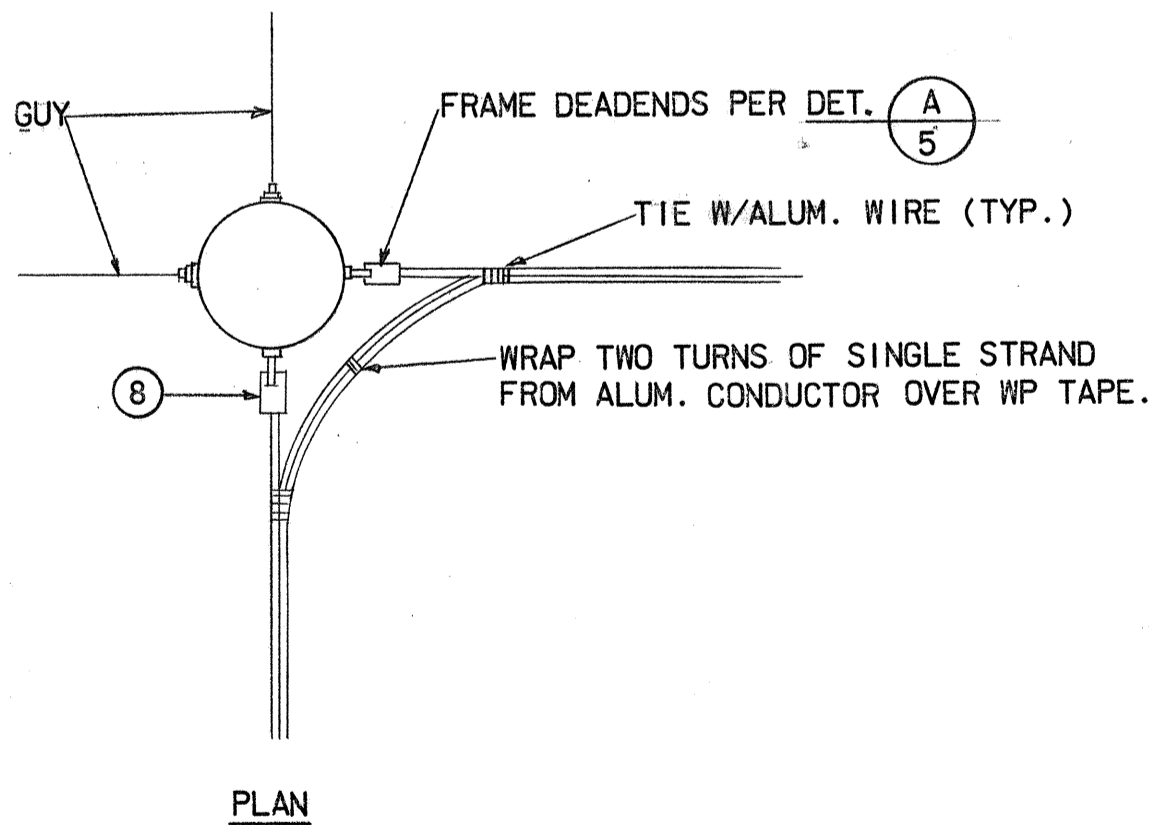
ANCHOR ROD AND DEADMAN DIMENSIONS		
"L" DIST. & OF POLE TO ANCHOR ROD EYE	"W" & HOLE TO ANCHOR ROD EYE	"D" VERTICAL DEPTH
20'-0"	56"	66"
15'-0"	48"	73"
10'-0"	36"	79"
5'-0"	20"	85"



DETAIL F/5
N.T.S.

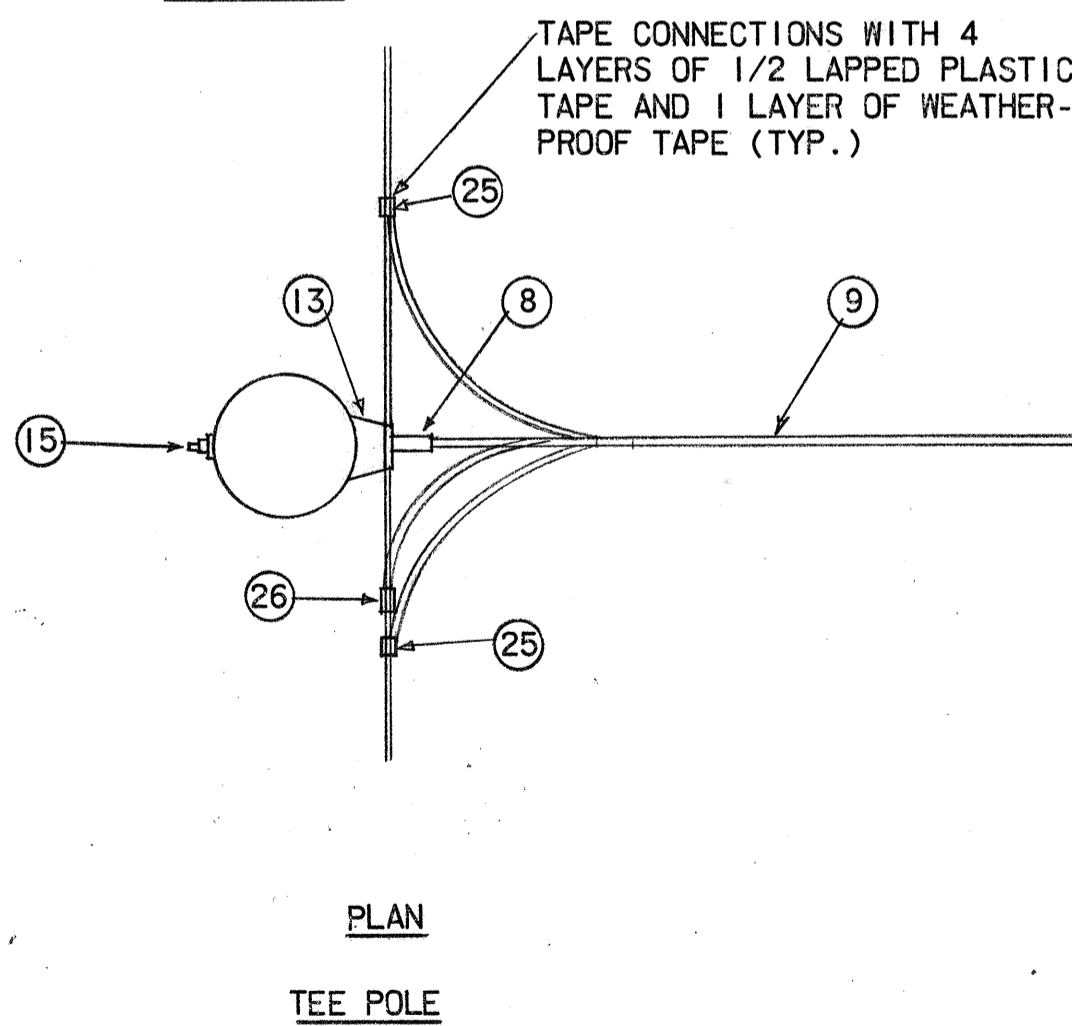


GUY DETAILS G/5
N.T.S.



DEVIATION ANGLE 30° - 90°

DETAIL D/5
N.T.S.



DETAIL E/5
N.T.S.



THIS WORK WAS PREPARED BY ME
OR UNDER MY SUPERVISION
Albert S. C. Chong
Albert S. C. Chong, PE

STATE OF HAWAII
DEPARTMENT OF TRANSPORTATION
HIGHWAYS DIVISION

HIGHWAY LIGHTING IMPROVEMENT
ON FARRINGTON HIGHWAY
BETWEEN JADE STREET & KEAAU BEACH PARK
AND FRONTING WAIANAE HIGH SCHOOL
PROJECT NO. 93B-01-72

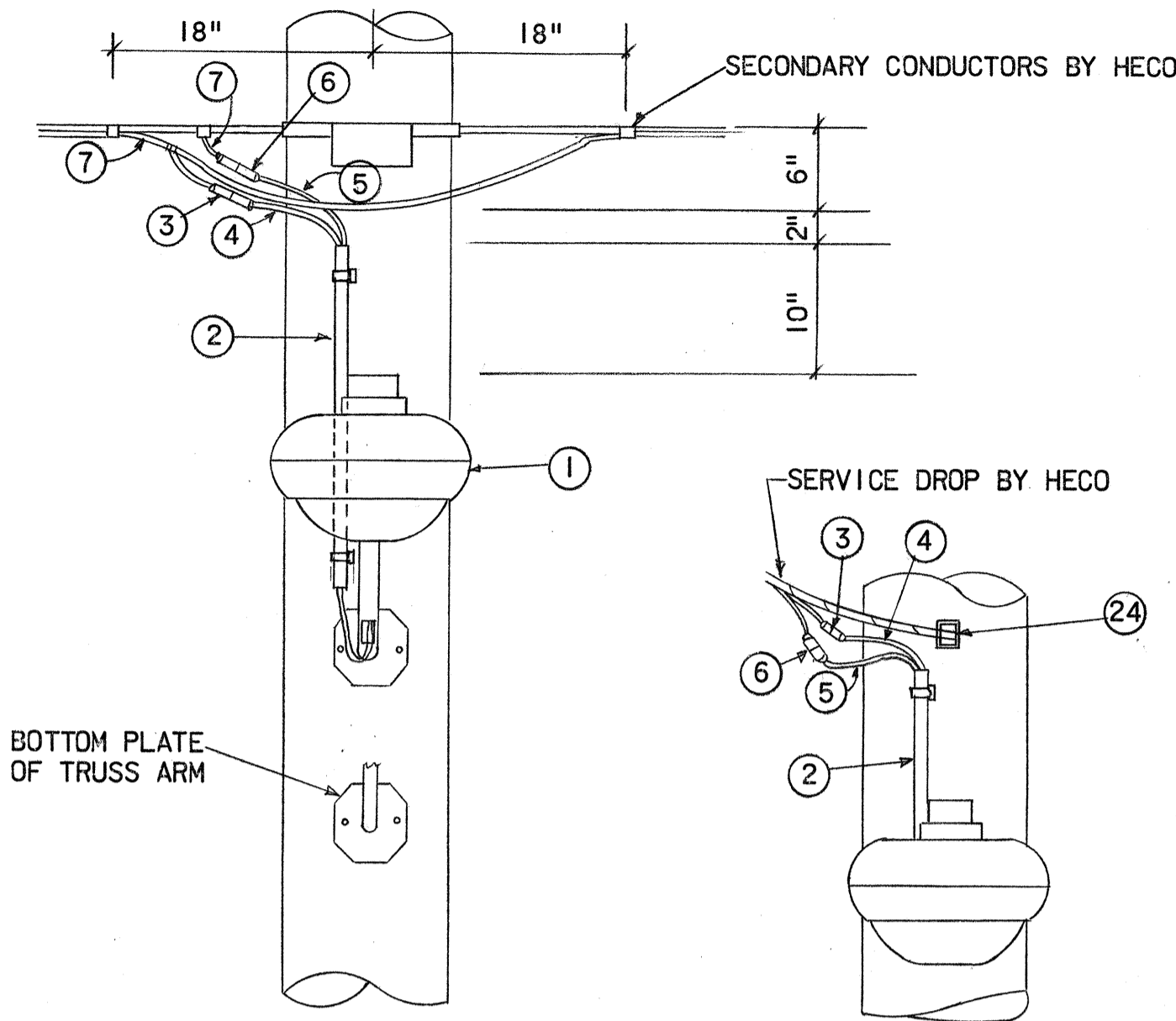
SHEET No. 5 OF 6 SHEETS

SURVEY PLOTTED BY	DATE
DRAWN BY	
TRACED BY	
NOTED BY	
CHECKED BY	
NO.	

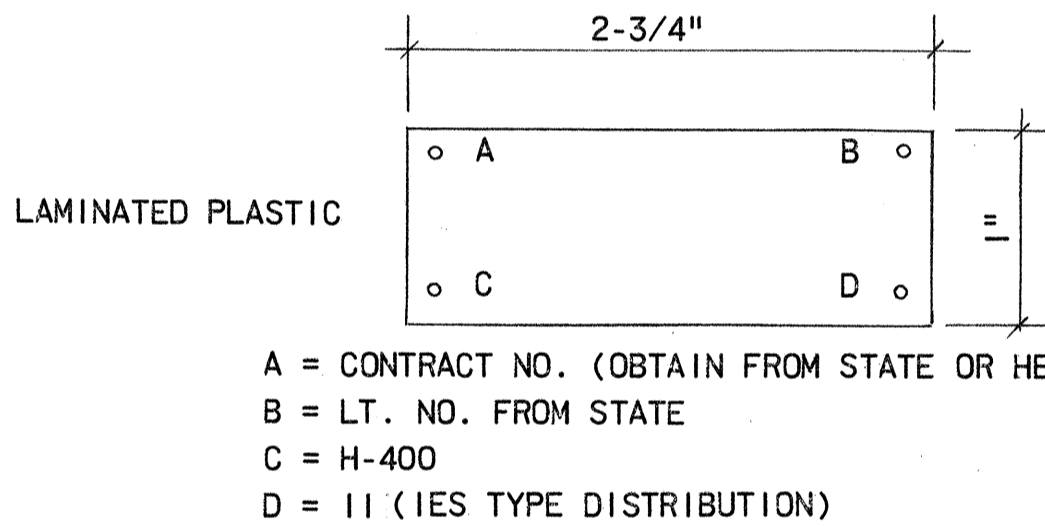
FED. ROAD DIST. NO.	STATE	PROJ. NO.	FISCAL YEAR	SHEET NO.	TOTAL SHEETS
HAWAII	HAW.	93B-01-72	1973	6	6

LIST OF MATERIAL	
ITEM NO.	DESCRIPTION
1	LUMINAIRE, MERCURY, 400W, AS INDICATED, TYPE 11 WITH PHOTO-ELECTRIC CONTROL AND MAST ARM.
2	CONDUIT, 3/4" PVC SCHEDULE 80 AND STRAPS
3	IN LINE FUSE HOLDER W/10A FUSE
4	WIRE, NO.10 AWG STRANDED COPPER, TYPE RHW BLACK
5	WIRE, NO.10 AWG STRANDED COPPER, TYPE RHW WHITE
6	IN LINE UNFUSED, INSULATED SEPARABLE CONNECTOR
7	WIRE NO.8 AWG 7-STRAND ALUMINUM, TYPE RHW
8	THIMBLE CLEVIS, ALUMINUM ALLOY WITH ALUMINUM. ALLOY EYELET
9	WIRES, 2 NO.1/0 CROSS-LINKED POLYETHYLENE ALUM. WITH NO.3/0 AAAC NEUTRAL MESSENGER
10	PERFORMED GUY GRIP
11	GUY WIRE, 3/8" EHS, GALV.
12	ANCHOR GUY HOOK W/3/4" DIA. THRU BOLT AND 2-1/4" SQ. WASHER
13	MESSENGER HANGER, CAST ALUMINUM W/5/8" ALUMINUM ALLOY THRU BOLT AND 2-1/4" ALUM. ALLOY SQUARE WASHER
14	ALUMINUM SHEET WRAP (AROUND MESSENGER)
15	5/8" ALUM. ALLOY THRU BOLT W/2-1/2" SQUARE ALUM. ALLOY CURVED WASHER, LENGTH AS REQUIRED.
16	ALUMINUM ALLOY SUSPENSION CLAMPS WITH LINE GUARD AND ALUM. ALLOY EYELET
17	ALUM. ALLOY PREFORMED DEADEND
18	ANCHOR ROD, 1" X 8' COPPER CLAD.
19	CONCRETE DEADMAN, 18" DIAMETER W/GALV. SQUARE WASHER
20	GUY WIRE GUARD, GALV.
21	INSULATOR, PORCELAIN
22	LAG SCREW
23	5/8" GALVANIZED THRU BOLT W/2-1/2" SQUARE GALV. WASHER AND NUT, LENGTH AS REQUIRED.
24	DEADEND SPOOL AND FORK
25	ALUMINUM COMPRESSION TAP CONDUCTOR,NO.1/0 ALUMINUM
26	ALUMINUM COMPRESSION TAP CONDUCTOR,NO.3/0 ALUMINUM

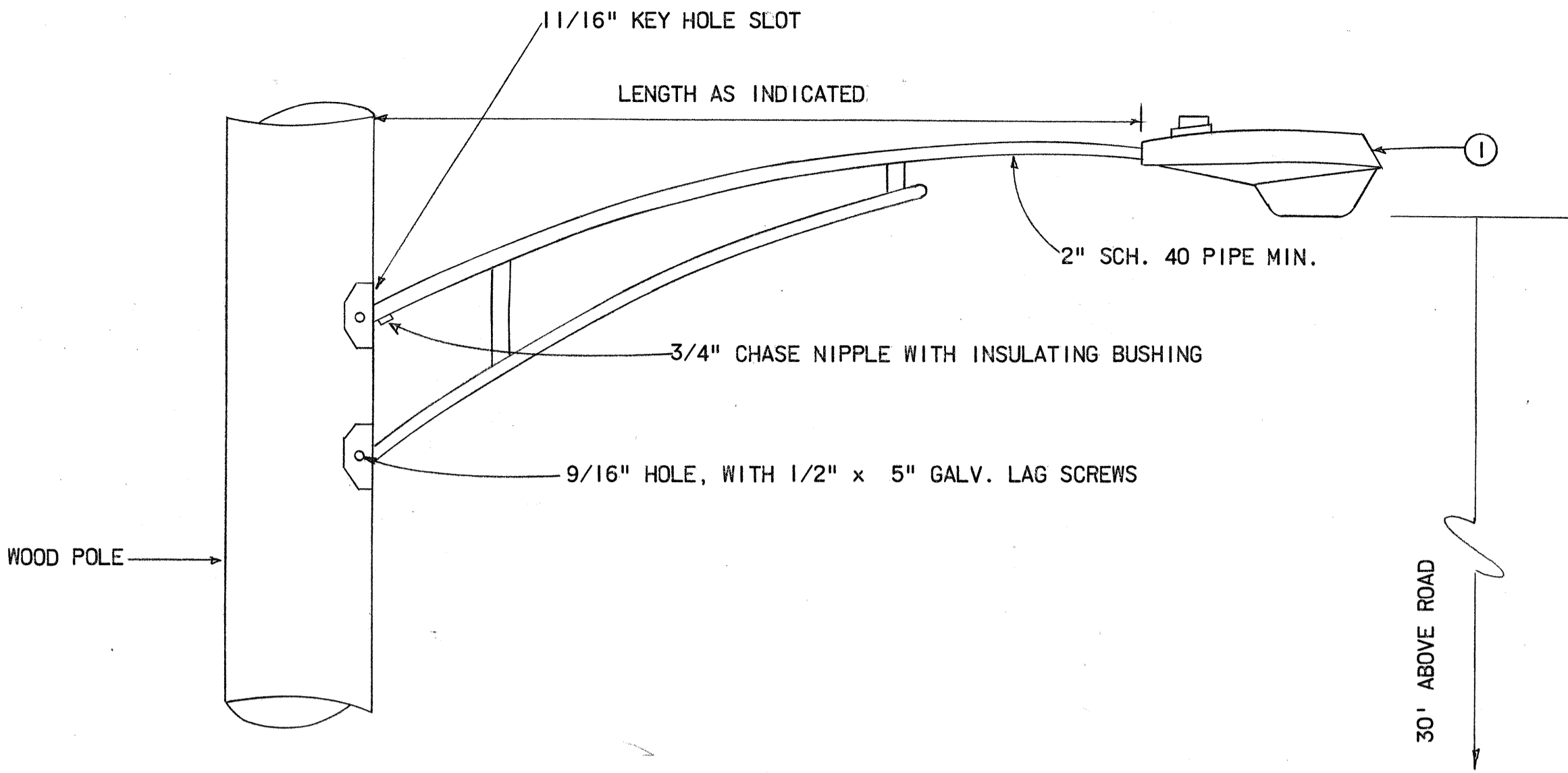
- NOTES:
- ALL HARDWARE, UNLESS INDICATED AS ALUMINUM OR ALUMINUM ALLOY, SHALL BE HOT DIPPED GALVANIZED STEEL.
 - PROVIDE IDENTIFICATION TAG ON ALL POLES.
 - STREET LIGHT NUMBERS ON PLANS DO NOT CORRESPOND WITH NUMBERS ON IDENTIFICATION TAGS. LIGHT NUMBERS TO BE ENGRAVED ON IDENTIFICATION TAG TO BE OBTAINED FROM STATE OF HAWAII.



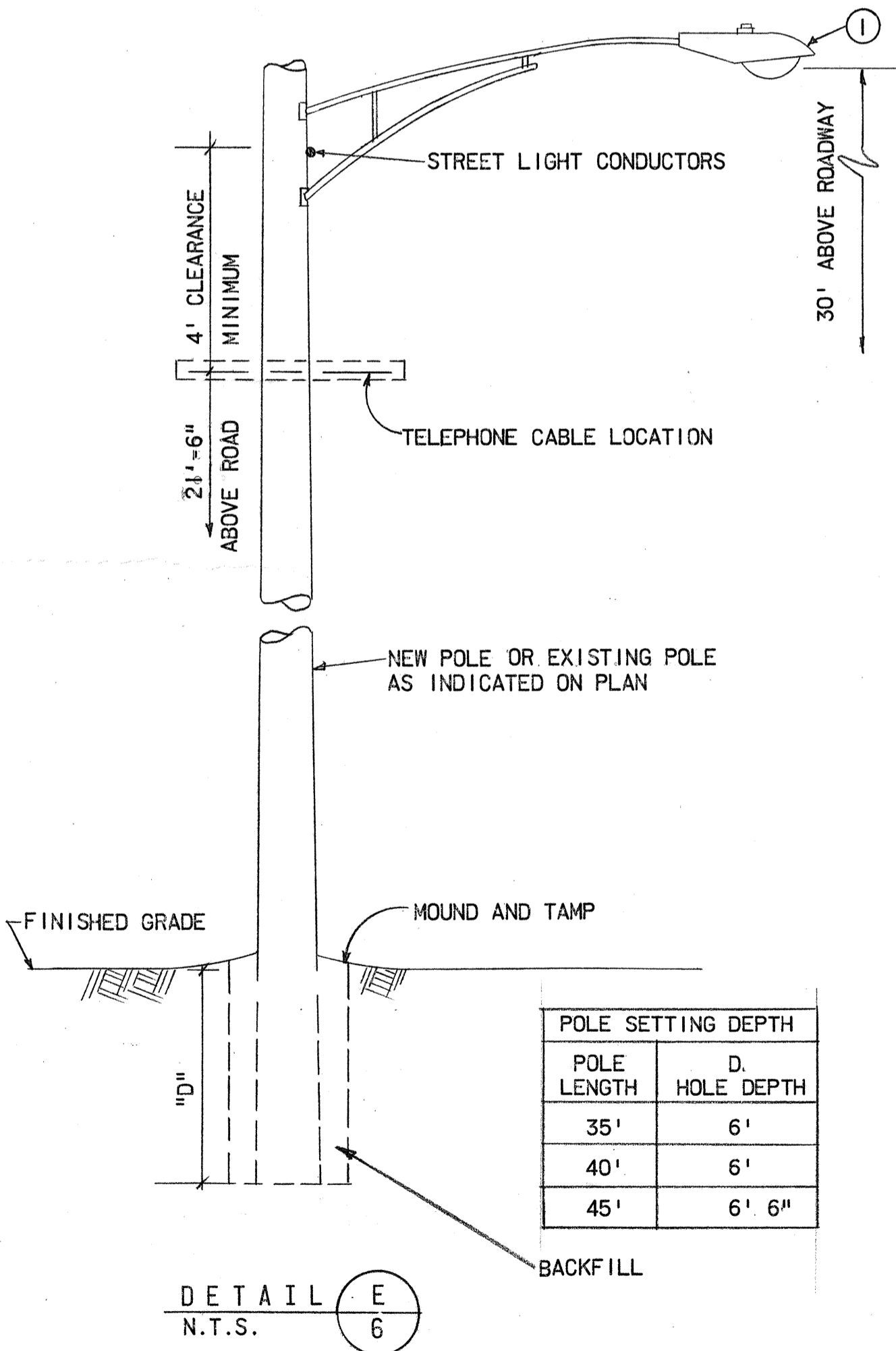
DETAIL B
N.T.S.



IDENTIFICATION TAG C
N.T.S.

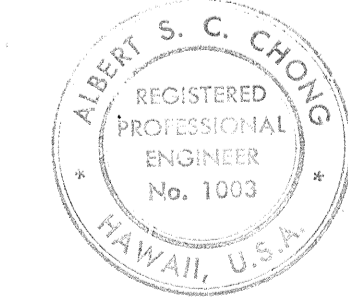


DETAIL A
N.T.S.



DETAIL E
N.T.S.

SURVEY PLOTTED BY	DATE
DRAWN BY	
DESIGNED BY	
QUANTITIES BY	
CHECKED BY	
ORIGINAL PLAN	
NOTE BOOK	
No.	



THIS WORK WAS PREPARED BY ME
OR UNDER MY SUPERVISION
Albert S. C. Chong
Albert S. C. Chong, PE

STATE OF HAWAII
DEPARTMENT OF TRANSPORTATION
HIGHWAYS DIVISION

HIGHWAY LIGHTING IMPROVEMENT
ON FARRINGTON HIGHWAY
BETWEEN JADE STREET & KEAAU BEACH PARK
AND FRONTING WAIANAE HIGH SCHOOL
PROJECT NO. 93B-01-72