

INDEX TO DRAWINGS	
COMPOSITE AND SET SHT. NO.	DESCRIPTION
1	TITLE SHEET
2 - 4	TYPICAL ROADWAY SECTIONS
5 - 20	PLAN AND PROFILE
21 - 22	BORING PLANS AND LOGS
23 - 31	MISCELLANEOUS ROADWAY DETAILS
32 - 37	ORDER OF WORK AND DETOURS
38 - 53	ROADWAY SIGNS AND LANDSCAPING PLANS AND DETAILS
54 - 65	DESTINATION AND EXPRESSWAY SIGN DETAILS
66 - 67	HIGHWAY LIGHTING
68 - 83	UTILITIES: PLANS AND DETAILS
84 - 101	DRAINAGE DETAILS
102 - 108	IRRIGATION DETAILS
109 - 120	KEANANOIO STREAM BRIDGE PLANS AND DETAILS
121 - 162	CROSS SECTIONS
(121 - 158)	FARRINGTON HIGHWAY
(159 - 160)	RAMP A
(161 - 162)	RAMP B
163 - 217	PALILAI INTERCHANGE
CO94S1- CO94S2	PROJ. No. I-HI-1(20) DRAINAGE DETAILS

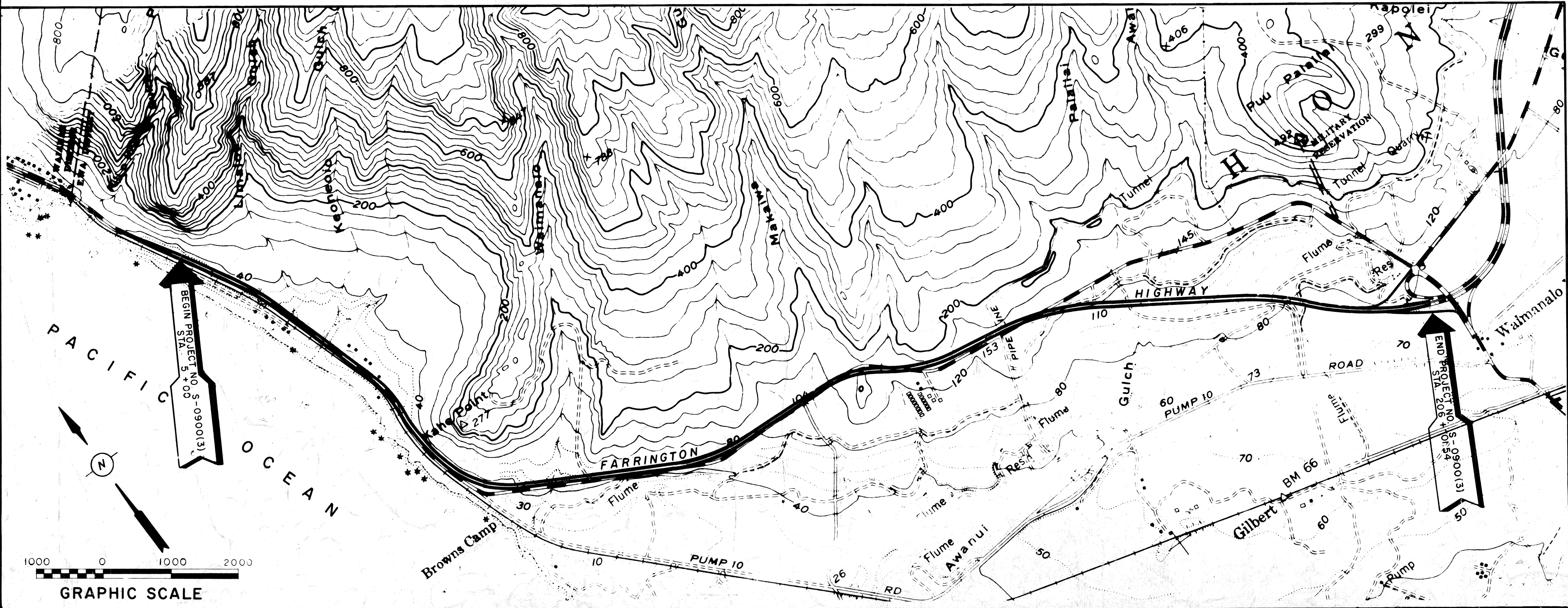
STATE OF HAWAII
DEPARTMENT OF TRANSPORTATION
HIGHWAYS DIVISION
HONOLULU, HAWAII
"AS BUILT"
PLANS OF
FARRINGTON HIGHWAY
BARBERS POINT TO PILIOKOE GULCH
FEDERAL AID SECONDARY PROJECT NO. S-0900(3)

DISTRICT OF EWA
ISLAND OF OAHU

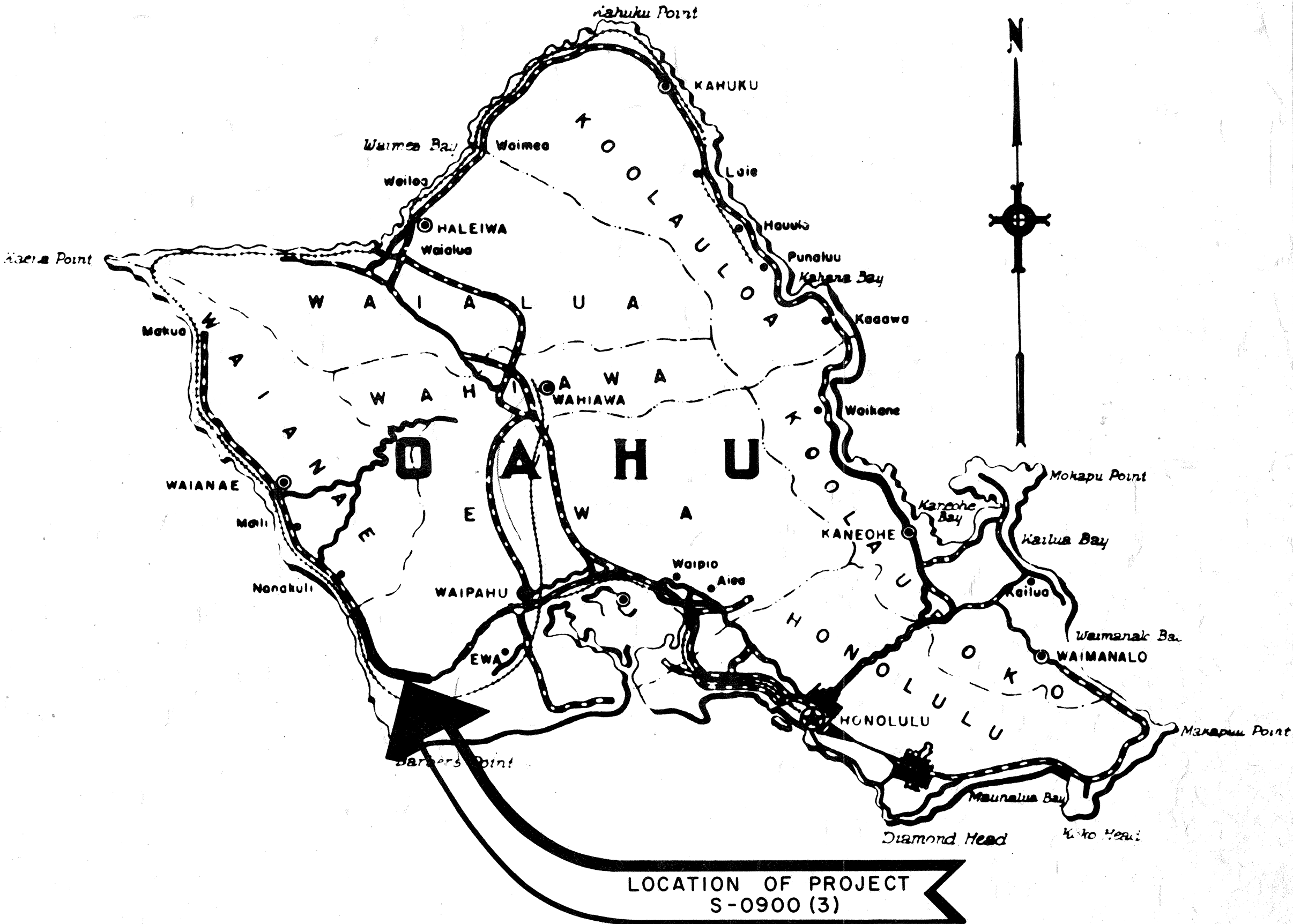
SCALES:
PLAN & PROFILE.....HOR.....1"= 50'
VER.....1"= 10'
CROSS SECTIONS.....HOR.....1"= 10'
VER.....1"= 10'

LAYOUT PLAN

GROSS LENGTH OF PROJECT 3.807 MI.
BRIDGES OVER 20'-0" SPAN 0.012 MI.
NET LENGTH OF ROADWAY 3.795 MI.



FED. ROAD DIST. NO.	STATE	FED. AID PROJ. NO.	FISCAL YEAR	SHEET NO.	TOTAL SHEETS
HAWAII	HAW	S-0900(3)	1965	1	162



NOTE: Federal Aid Projects Previously Constructed Or Under Construction

ALL CHANGES MADE DURING CONSTRUCTION HAVE BEEN NOTED IN RED ON THESE TRACINGS AND CHECKED BY

Kenichi Subata
PROJ. ENGR
2/19/69
DATE

Plans Prepared By:
BELT, COLLINS & ASSOC., LTD.
CONSULTING ENGINEERS

DESIGN CLASSIFICATION

ADT (1965) 8,587
DESIGN ADT (1985)..... 20,000
DHV 2,400
D 60/40
T 4 %
V 60 MPH

DEPARTMENT OF TRANSPORTATION
STATE OF HAWAII
APPROVED:
Kaipo K. Kaula
ACTING DIRECTOR
11-3-65
DATE

DEPARTMENT OF COMMERCE
BUREAU OF PUBLIC ROADS
APPROVED:
John B. Dalton
DIVISION ENGINEER
2-7-66
DATE