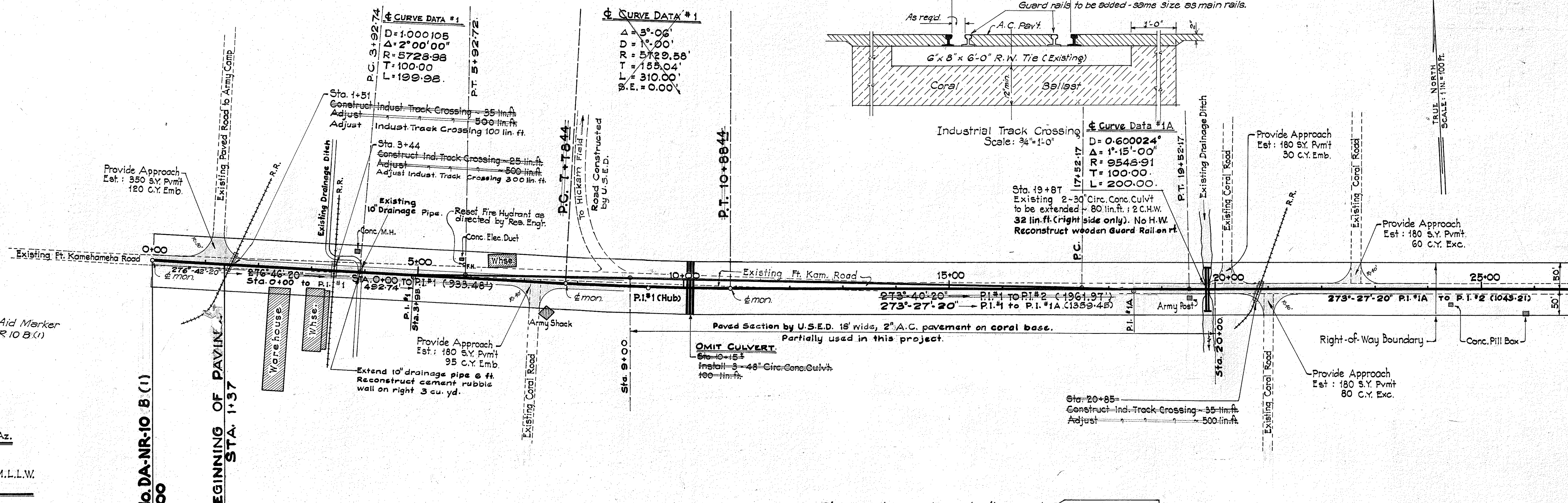
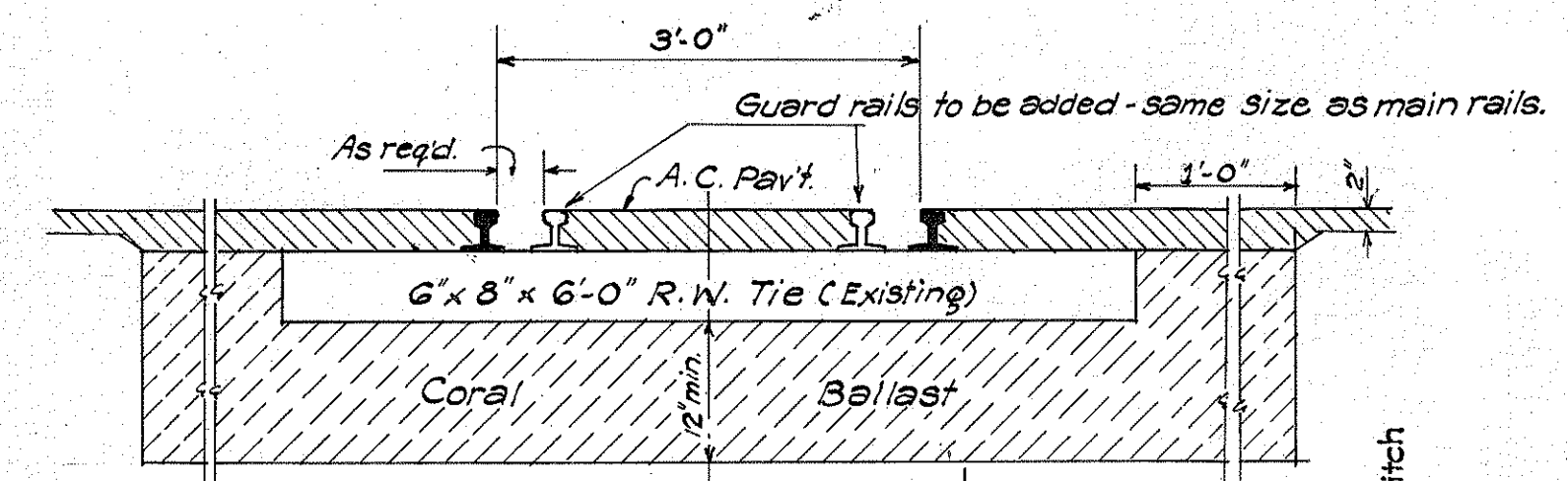


NOTE: Crossing including ballast is to extend four (4) feet beyond both edges of pavement.



Note: All Azimuth Readings are referred to Salt Lake  $\Delta$  Subtract  $0^{\circ}03'20''$  for U.S.N. Az.

Elevations shown are on M.L.L.W. datum for this project.

Changes in grade and alignment  $\leftarrow$  Rev. Apr. 1945

DATE	BY	REVISION
		PLAN
		NOTED
		NOTED
		NOTED
		NOTED

Revision: July 7, 1944  
Track Crossing Details  
Revised April, 1945

DATE	BY	REVISION
		PROFILE
		NOTED
		NOTED
		NOTED
		NOTED

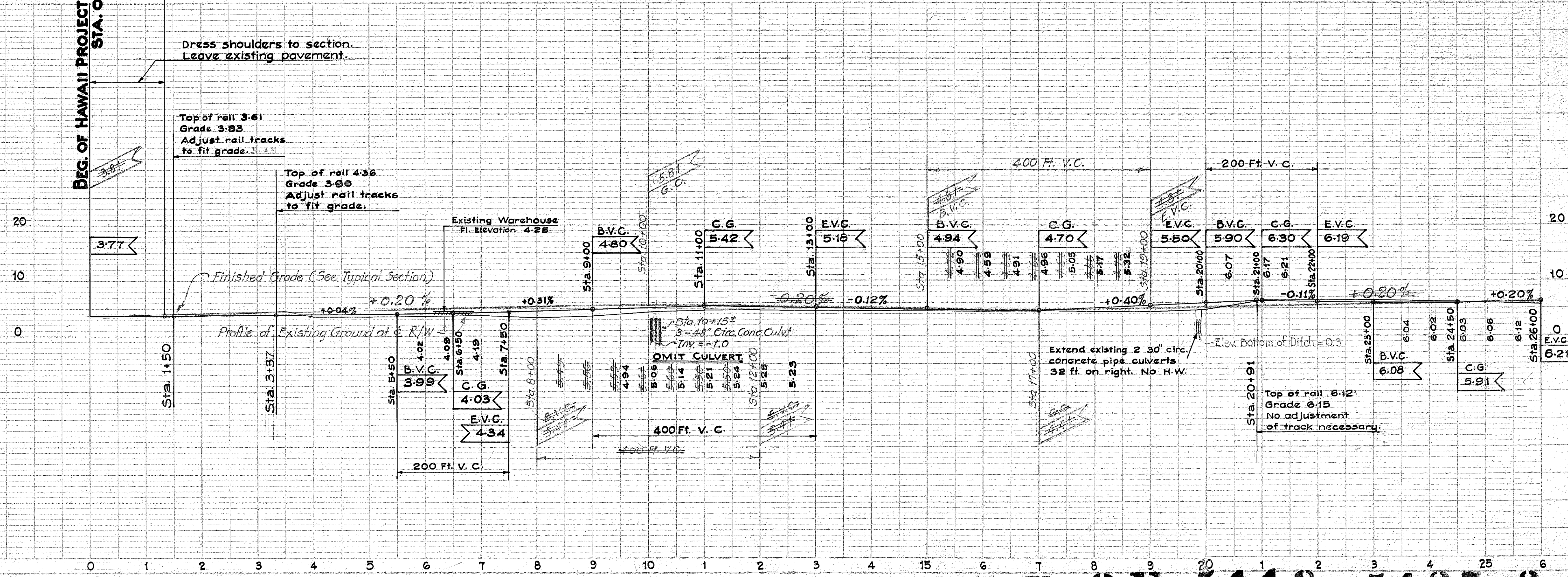


PLATE 1-PLAN-PROFILE - P. E. & R. E. ENGINEERS  
HEFFEL & ESSER CO., NEW YORK

FED. ROAD DIST. NO.	STATE	FED. AID PROJ. NO.	FISCAL YEAR	SHEET NO.	TOTAL SHEETS
HAWAII	HAWAII	DARR(106) 293	1943	4	17

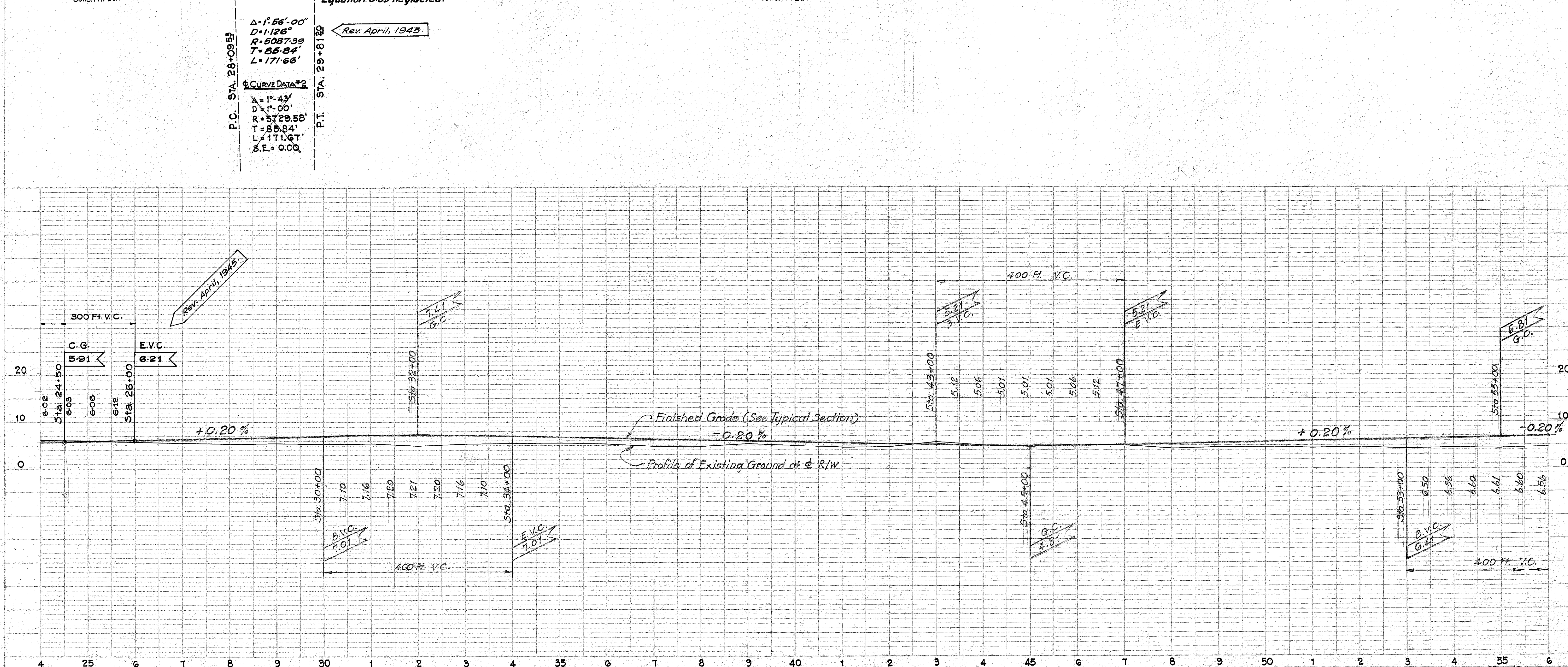
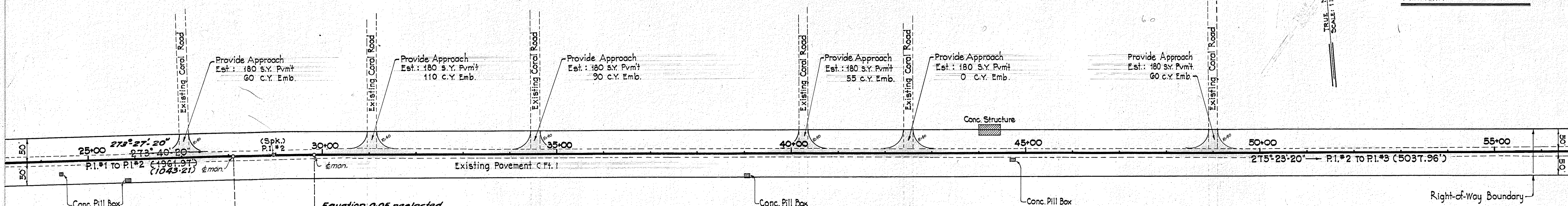
Note: All Azimuth Readings are referred to Salt Lake & Subtract 0°-03'-20" for U.S.N. Azimuth.

TRUE NORTH  
SCALE: 1 IN. = 100 FT.

DATE	
BY	
REVISIONS	
NO.	DESCRIPTION
1	REVISED
2	PLOTTED
3	NOTE BOOK ALIGNMENT CHECKED
4	RET. OF WAY CHECKED
5	NO.

Rev. April, 1945.

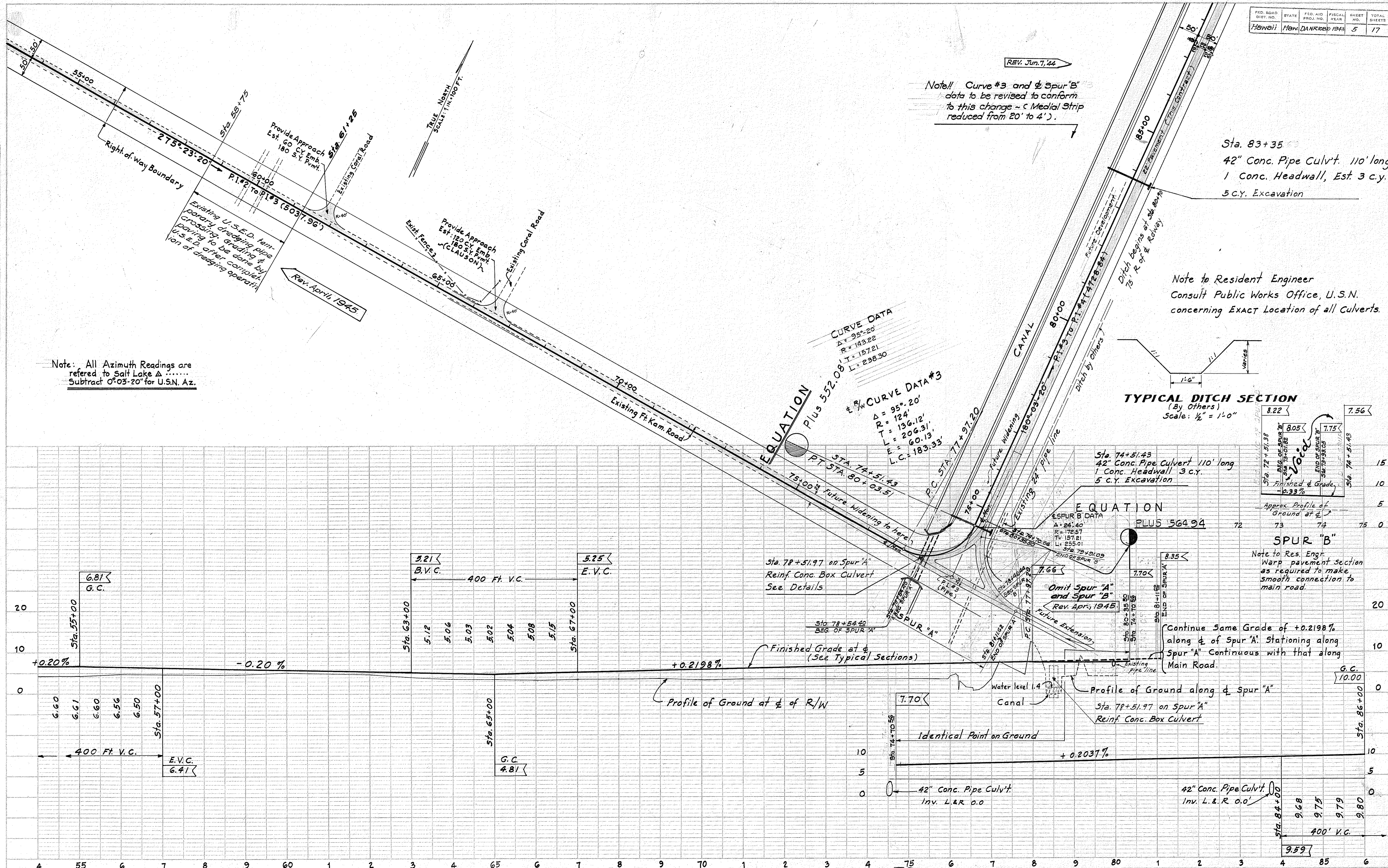
DATE	
BY	
REVISIONS	
NO.	DESCRIPTION
1	PROFILE SURVEYED
2	PLOTTED
3	NOTE BOOK GRADES CHECKED
4	STRUCTURE NOTATIONS CHECKED
5	NO.



DATE: \_\_\_\_\_  
 BY: \_\_\_\_\_  
 CHECKED: \_\_\_\_\_  
 PLANNED: \_\_\_\_\_  
 PLOTTED: \_\_\_\_\_  
 NOTE BOOK ALIGNED CHECKED: \_\_\_\_\_  
 SET OF WAY CHECKED: \_\_\_\_\_  
 M.C. \_\_\_\_\_

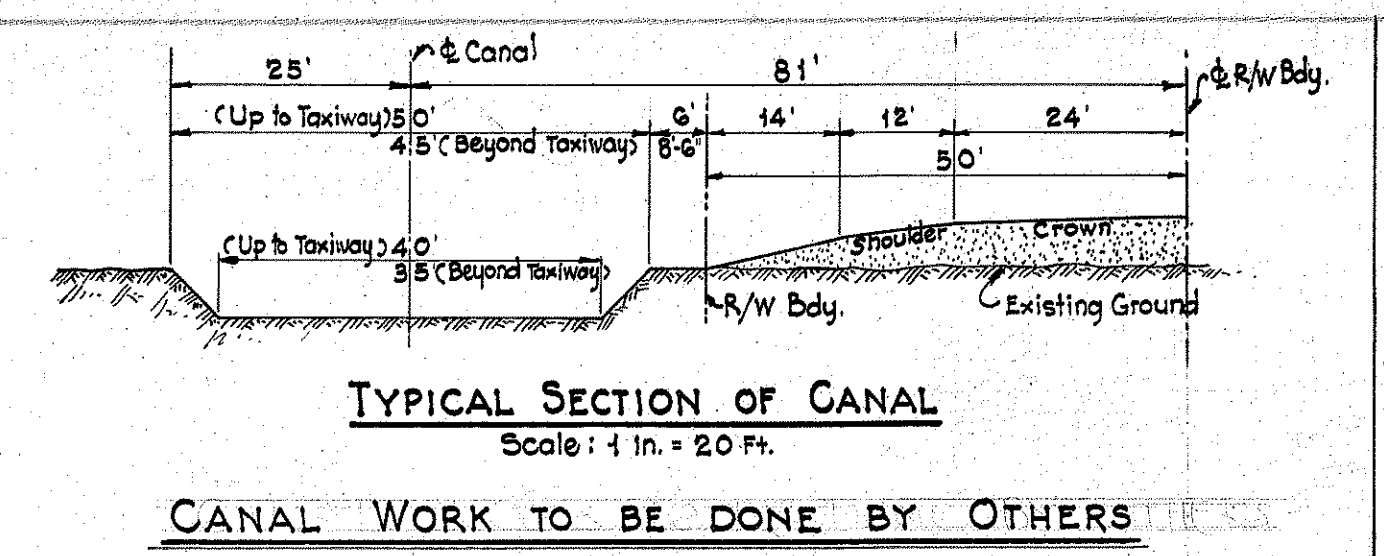
Rev. June 7, 1944  
 Rev. April, 1945

DATE: \_\_\_\_\_  
 BY: \_\_\_\_\_  
 CHECKED: \_\_\_\_\_  
 PLOTTED: \_\_\_\_\_  
 NOTE BOOK GRADERS CHECKED: \_\_\_\_\_  
 BY: \_\_\_\_\_  
 M.C. \_\_\_\_\_



113491.30  
9815.59  
20475.71

FED. ROAD DIST. NO.	STATE	FED. AID PROJ. NO.	FISCAL YEAR	SHEET NO.	TOTAL SHEETS
HAWAII	HAW.	DANR108(1)043	6	17	



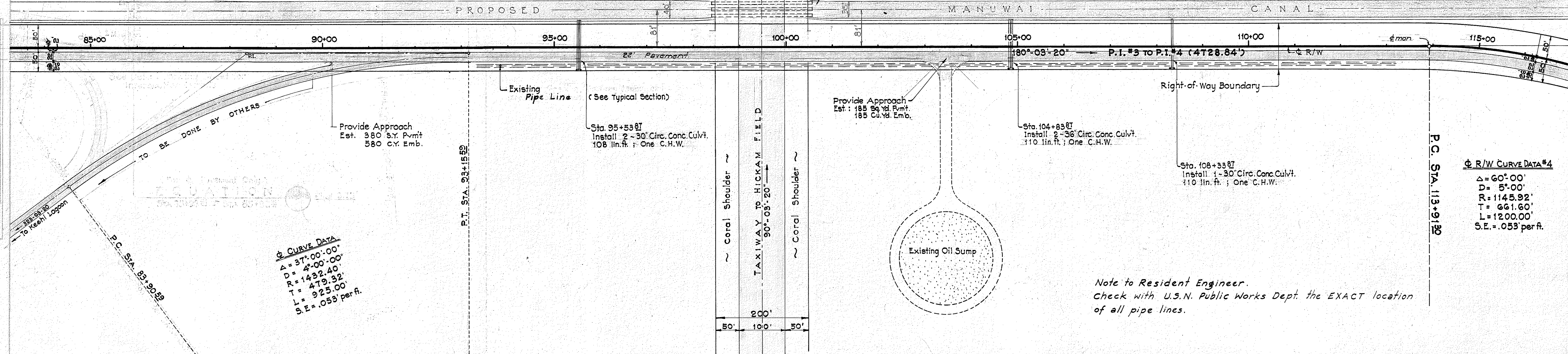
TRUE NORTH  
SCALE: 1 IN. = 100 FT.

Note: All Azimuth Readings are referred to Salt Lake Δ Subtract 0°-03'-20" for U.S. Azimuth.

PLAN  
SURVEYED BY  
NOTED  
CHECKED  
DATE

Rev. (cf Plan shifted 8') June 44

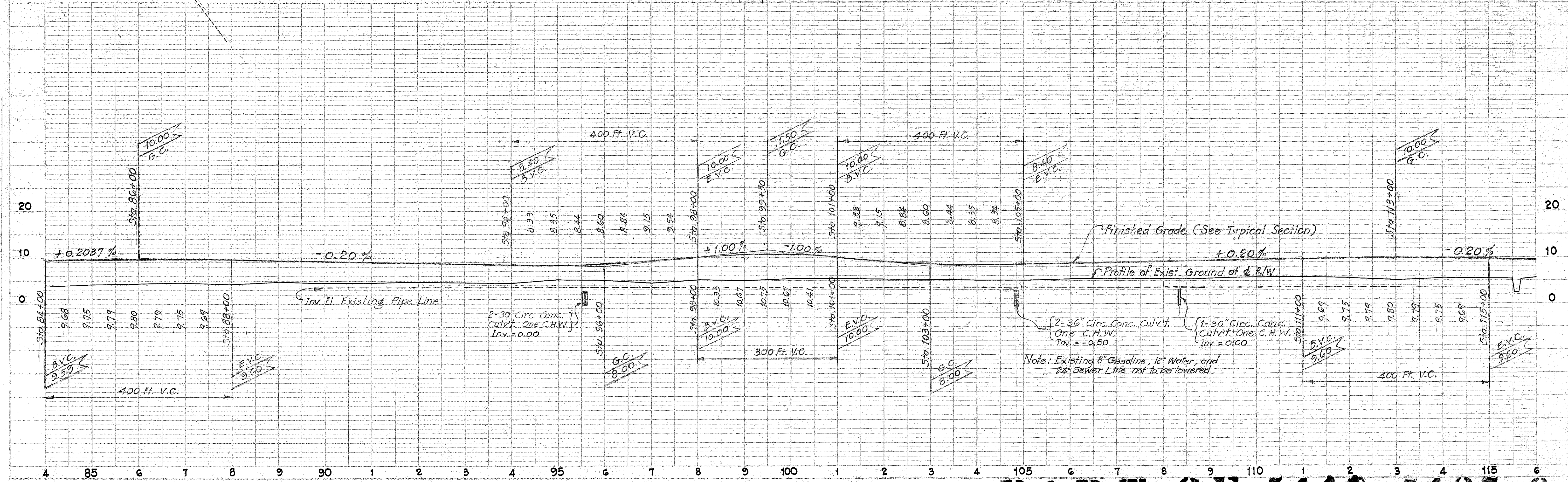
PROFILE  
SURVEYED BY  
NOTED  
CHECKED  
DATE

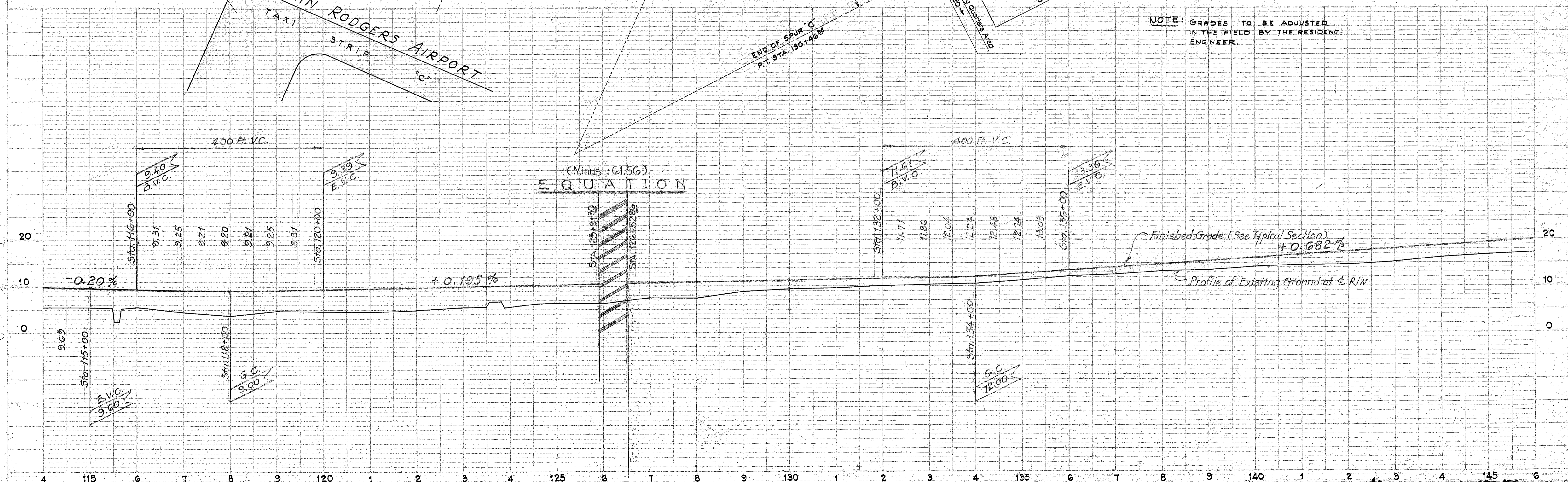
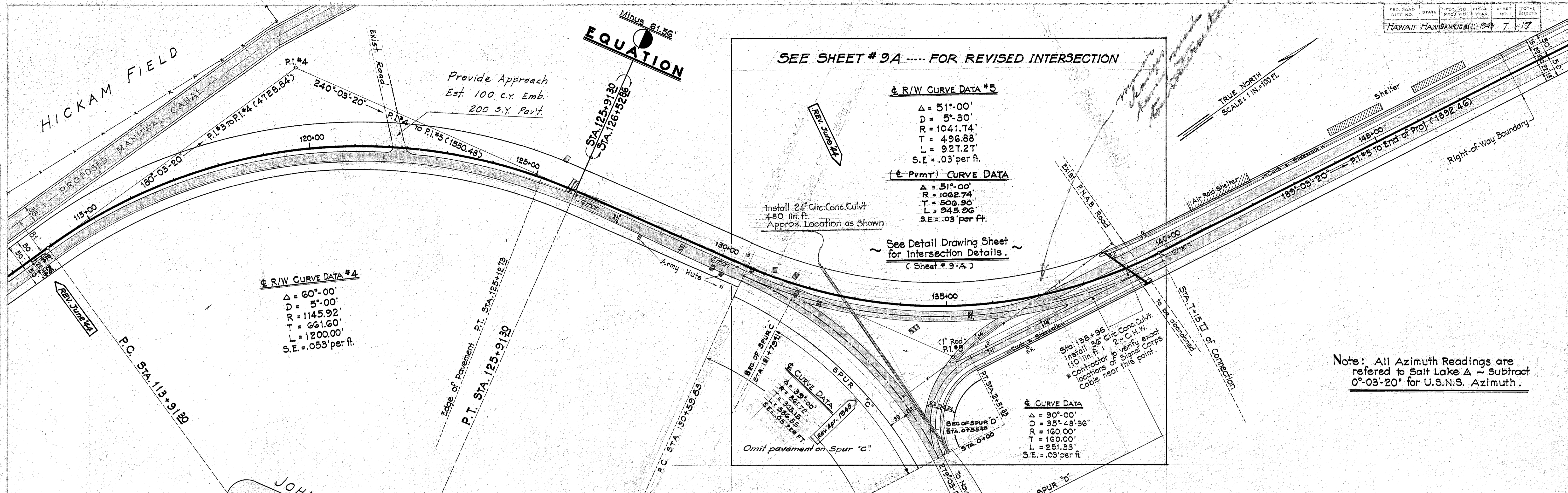


**☉ CURVE DATA**  
Δ = 37°-00'-00"  
D = 4°-00'-00"  
R = 1432.40'  
T = 479.32'  
L = 925.00'  
S.E. = .053' per ft.

**☉ R/W CURVE DATA #4**  
Δ = 60°-00'  
D = 5°-00'  
R = 1145.92'  
T = 661.60'  
L = 1200.00'  
S.E. = .053' per ft.

Note to Resident Engineer.  
Check with U.S.N. Public Works Dept. the EXACT location of all pipe lines.





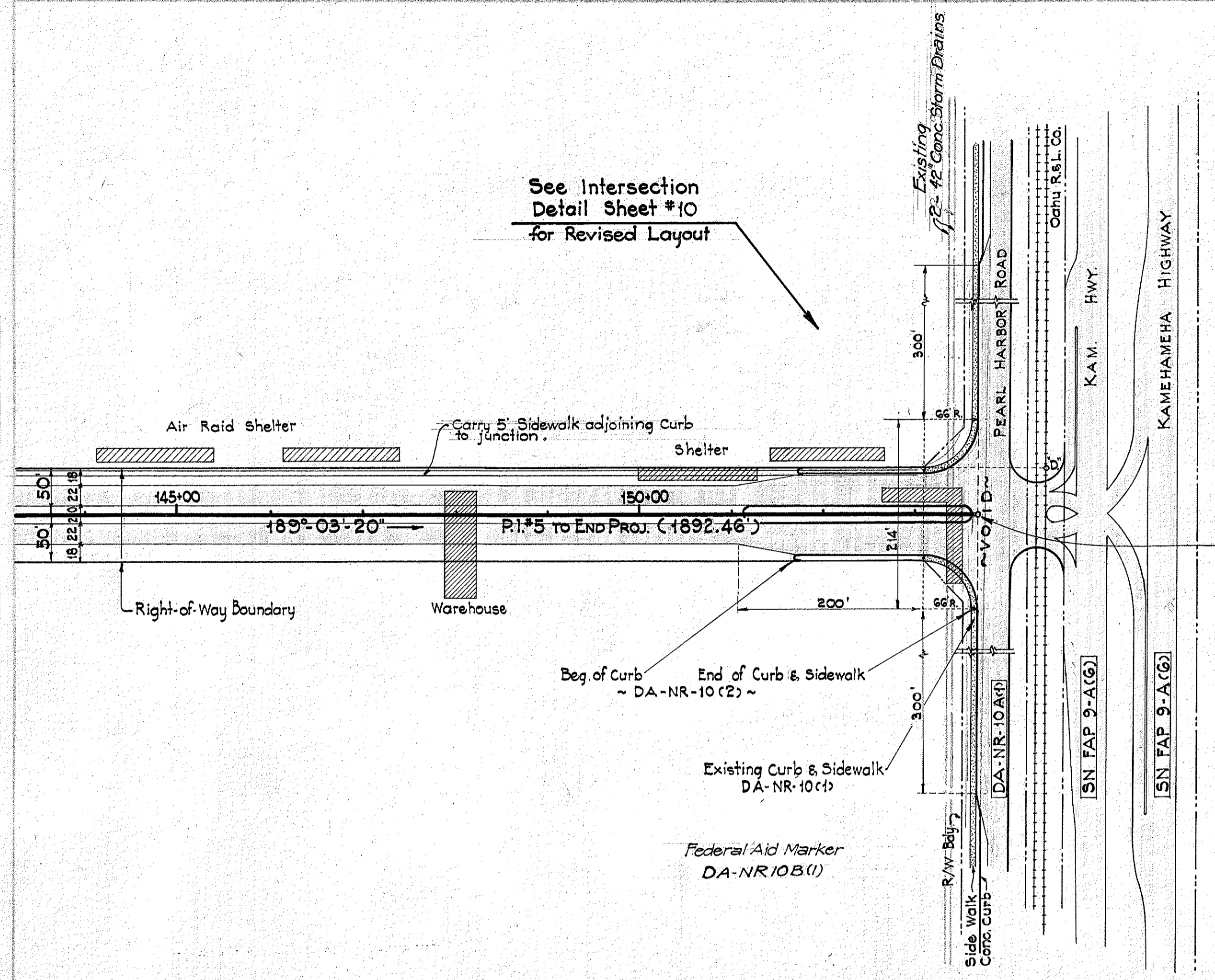
PLAN  
 DRAWN BY: [ ]  
 CHECKED BY: [ ]  
 DATE: [ ]  
 NOTE: BOOK ALIGNMENT CHECKED.  
 NO. OF WAY CHECKED: [ ]

Rev. April, 1945.  
 Rev. June, 1944.

PROFILE  
 DRAWN BY: [ ]  
 CHECKED BY: [ ]  
 DATE: [ ]  
 NOTE: BOOK GRADES CHECKED.  
 NO. OF GRADES CHECKED: [ ]

PLAN  
 SURVEYED  
 PLOTTED  
 NOTE BOOK ALIGNMENT CHECKED  
 NO. OF COPY MADE

PROFILE  
 SURVEYED  
 PLOTTED  
 NOTE BOOK ALTIMETER CHECKED  
 NO. OF COPY MADE  
 STRUCTURE NOTAS IN SHEET



**END OF PROJ. No. DA-NR-10 B (1)**  
**STA. 153+67.11**

Note: All Azimuth Readings are referred to Salt Lake Δ ----- Subtract 0°-03'-20" for U.S.N. Azimuth.

TRUE NORTH  
 SCALE: 1 IN. = 100 FT.

