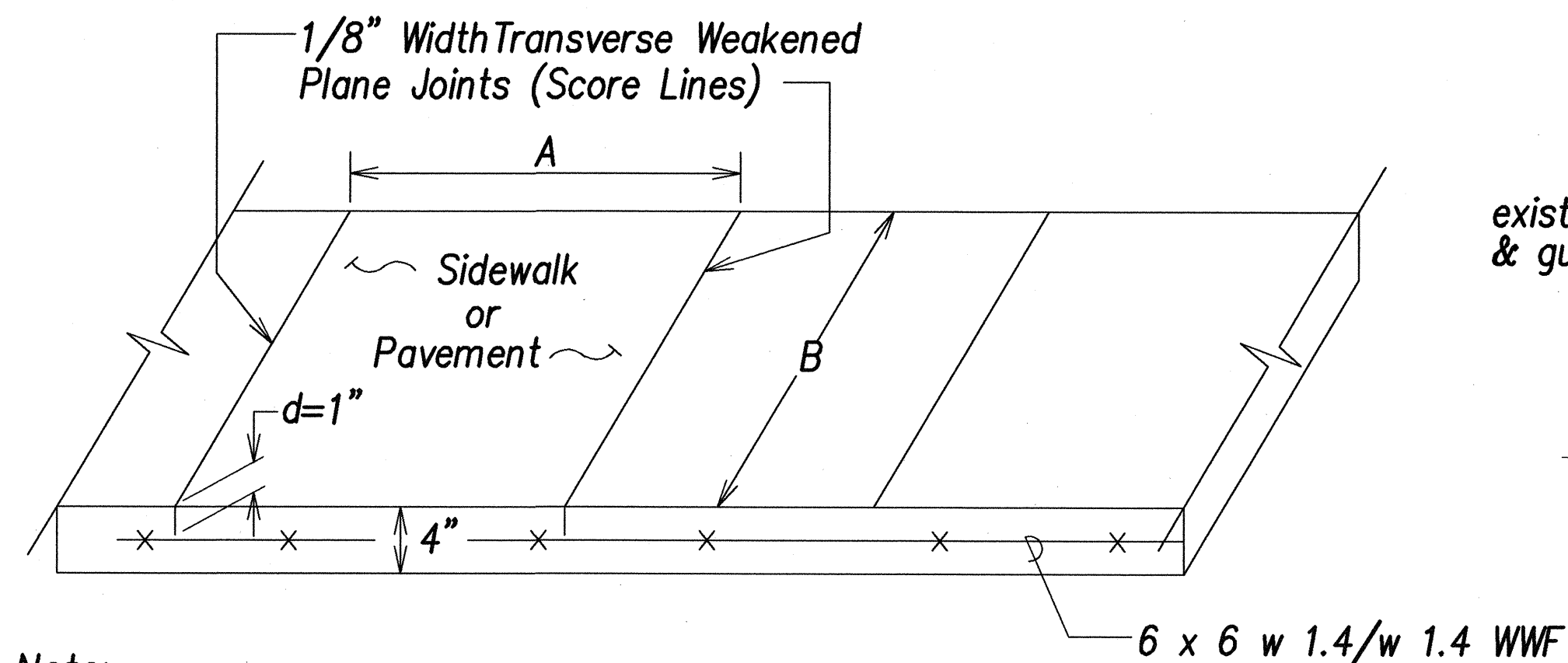


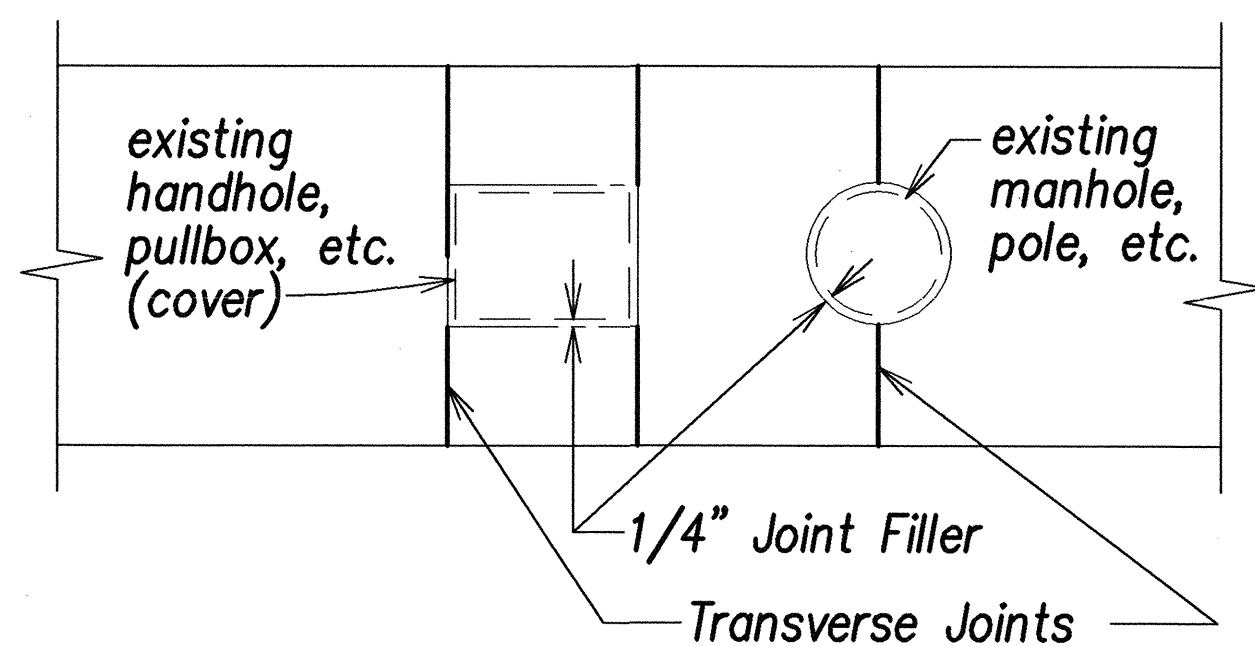
FED. ROAD DIST. NO.	STATE	FED. AID PROJ. NO.	FISCAL YEAR	SHEET NO.	TOTAL SHEETS
HAWAII	HAW.	NH-092-1(25)	2002	78	268



Note:

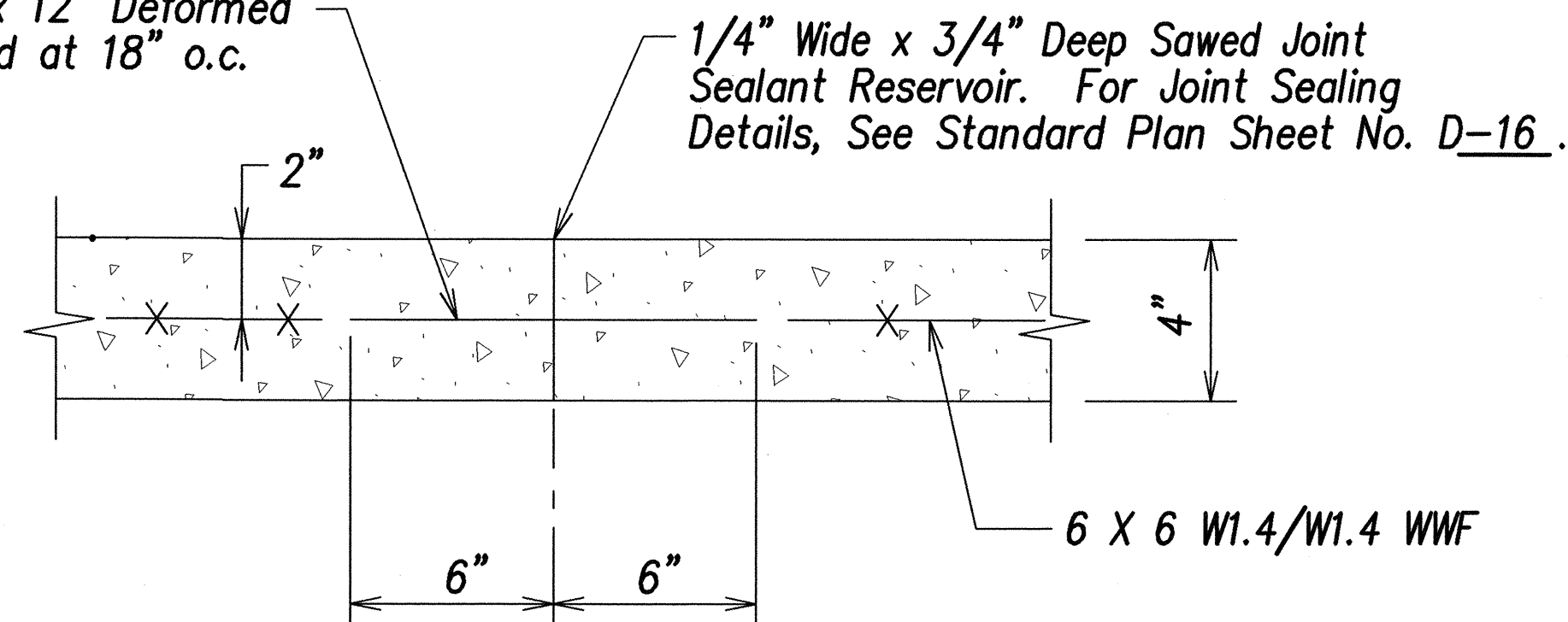
1. $A = 5'$ if $B < 7'$ or $(B/A \text{ or } A/B) < 1.25$ and $(A \text{ or } B)$ not to exceed $7'$

SIDEWALK SCORE LINE DETAIL
Not To Scale

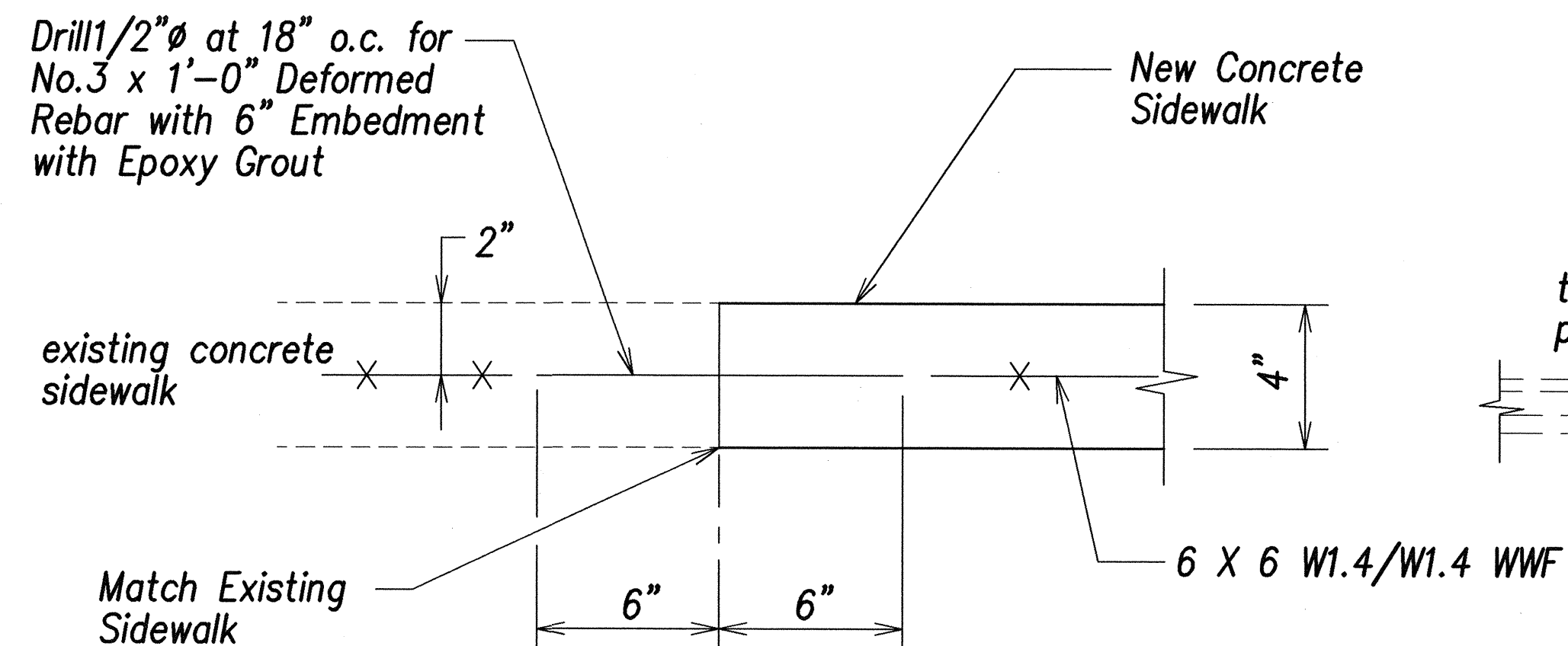


SIDEWALK ISOLATION JOINT DETAIL
Not To Scale

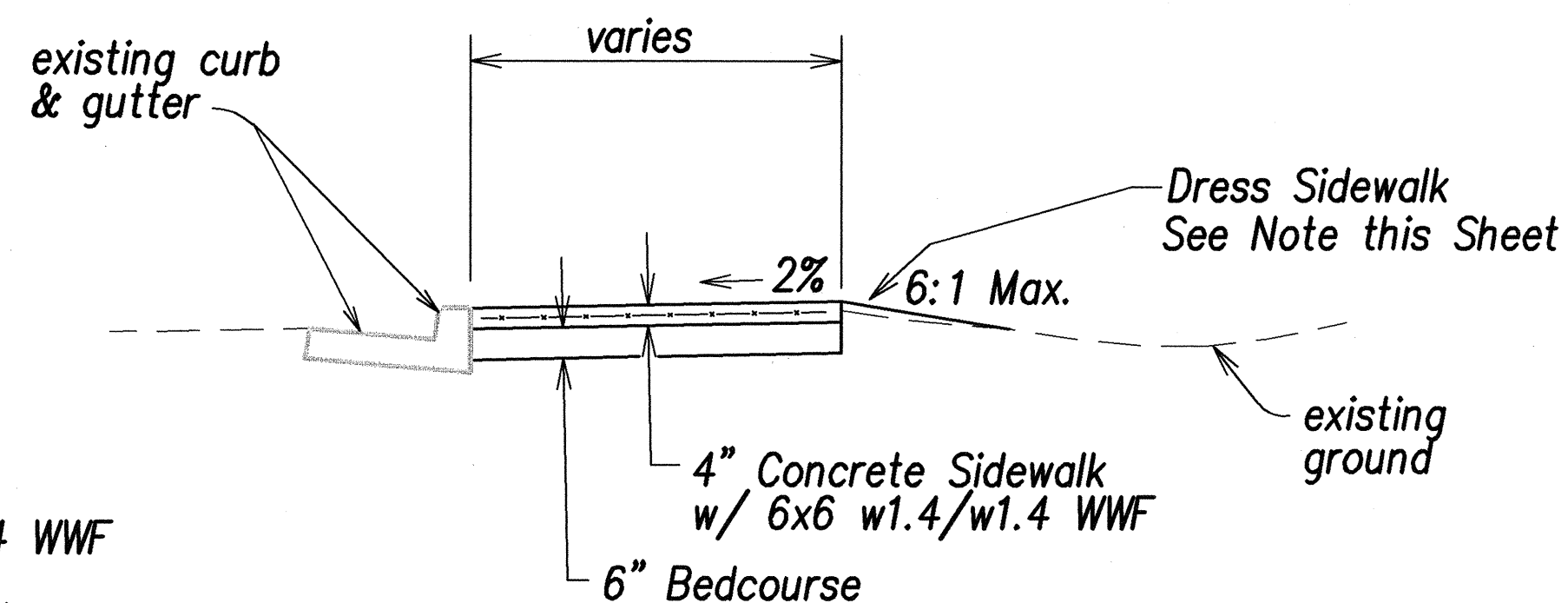
Drill $3/8"$ ϕ x 12" Deformed Bars spaced at 18" o.c.



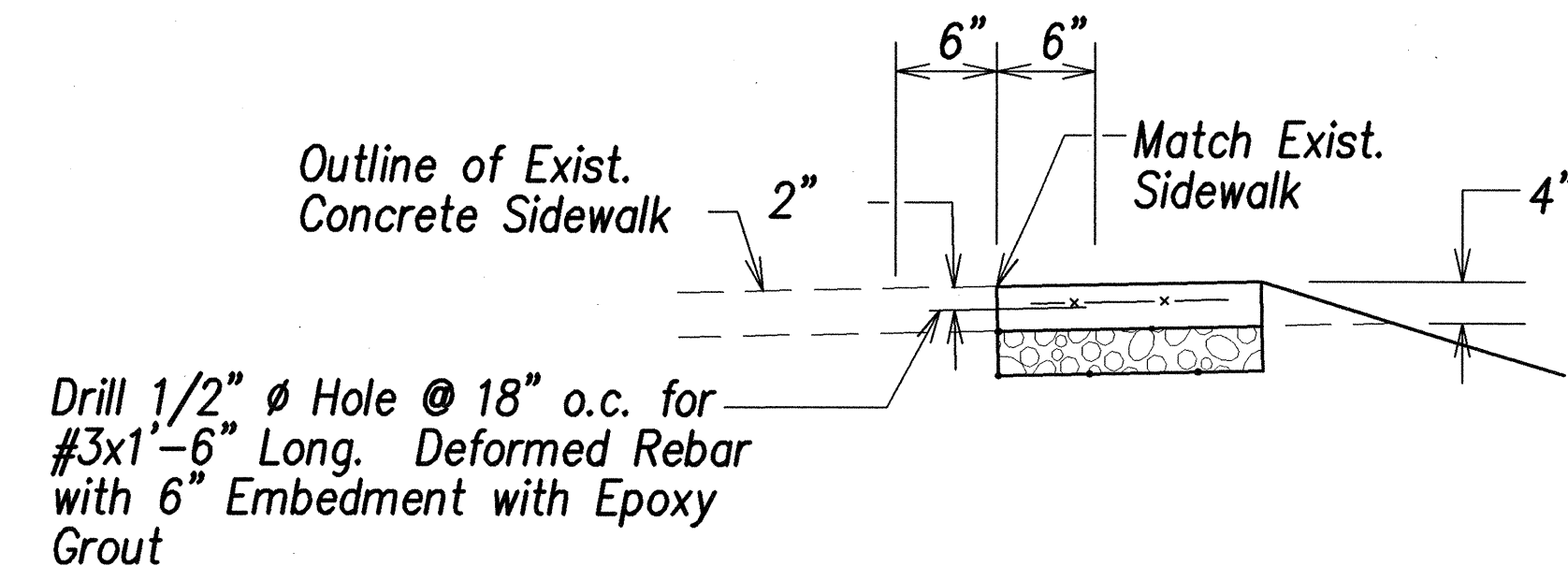
TRANSVERSE CONSTRUCTION JOINT DETAIL
Not to Scale



TRANSVERSE JOINT AT EXISTING SIDEWALK
Not to Scale



SIDEWALK DETAIL
Not to Scale



Note:

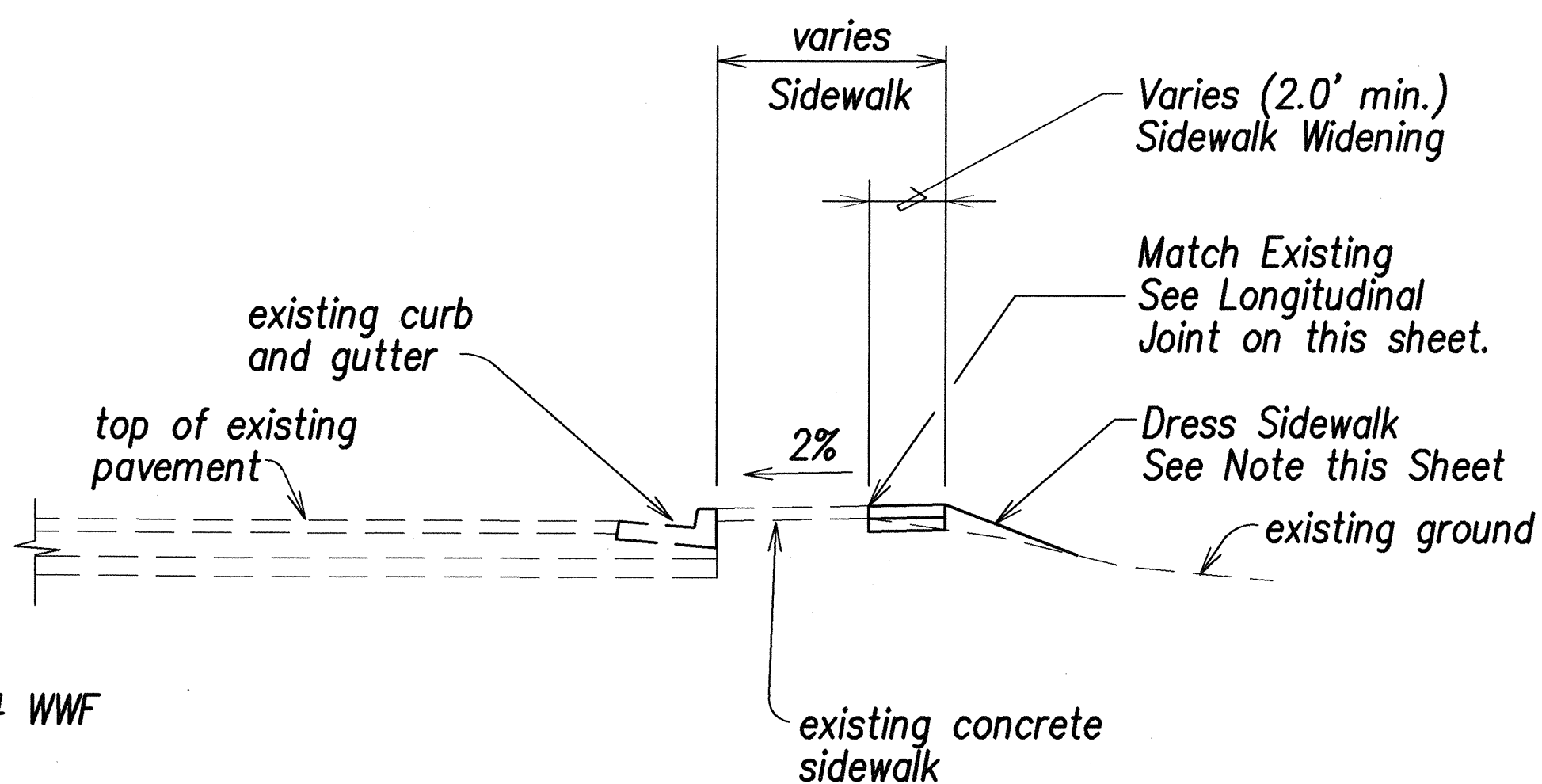
1. Do not install rebars within 4" of any planned score line or transverse construction joint.

LONGITUDINAL JOINT AT EXISTING SIDEWALK
Not to Scale

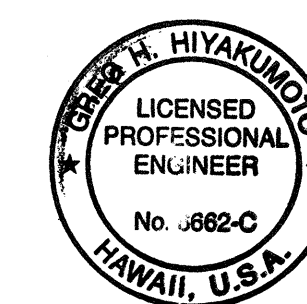
NOTES:

1. Dressing of sidewalk shall consist of clearing, grubbing, grading, reshaping and compacting the area adjacent to the improvement with suitable material as shown on the plans and/or as directed by the Engineer. If existing ground is asphalt or concrete surface, dress sidewalk with A.C. pavement, Mix No. V. This work shall be considered incidental to the new sidewalk.
2. Transverse and longitudinal weakened Plane Joints for sidewalk shall be considered incidental to the New Sidewalk.
3. Installation of dowels and tie bars including drilling, and epoxy grout shall be incidental to Sidewalk.

SURVEY PLOTTED BY	DATE
DRAWN BY	
CHECKED BY	
INCHES BY	
QUANTITIES BY	
CHECKED BY	
ORIGINAL PLAN	
NOTE BOOK	
No.	



SIDEWALK WIDENING SECTION
Not to Scale



THIS WORK WAS PREPARED BY ME OR UNDER MY SUPERVISION

SIGNATURE DATE

STATE OF HAWAII
DEPARTMENT OF TRANSPORTATION
HIGHWAYS DIVISION

ROADWAY DETAILS - 1

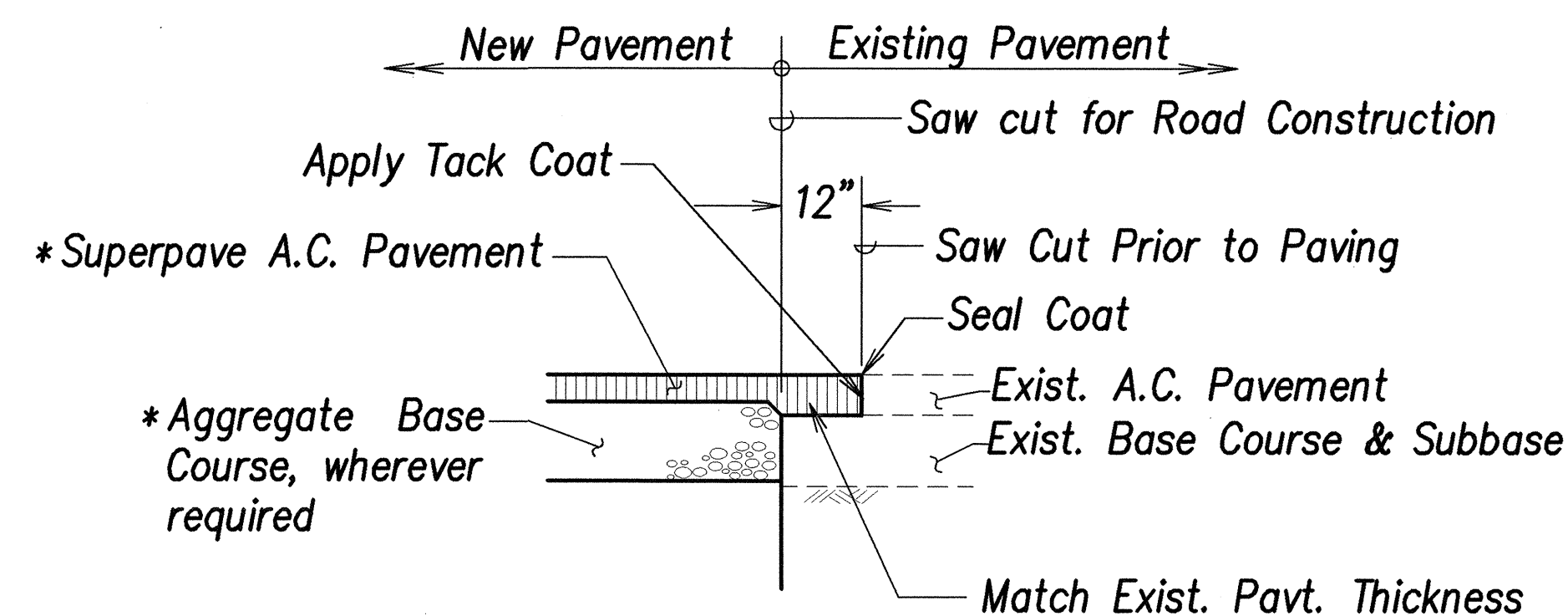
NIMITZ HIGHWAY REHABILITATION
SUMNER STREET TO QUEEN STREET
F.A.I. Proj. No. NH-092-1(25)

Scale: As shown

Date: 10/19/01

SHEET No. C-74 OF 107 SHEETS

FED. ROAD DIST. NO.	STATE	FED. AID PROJ. NO.	FISCAL YEAR	SHEET NO.	TOTAL SHEETS
HAWAII	HAW.	NH-092-1(25)	2002	79	268

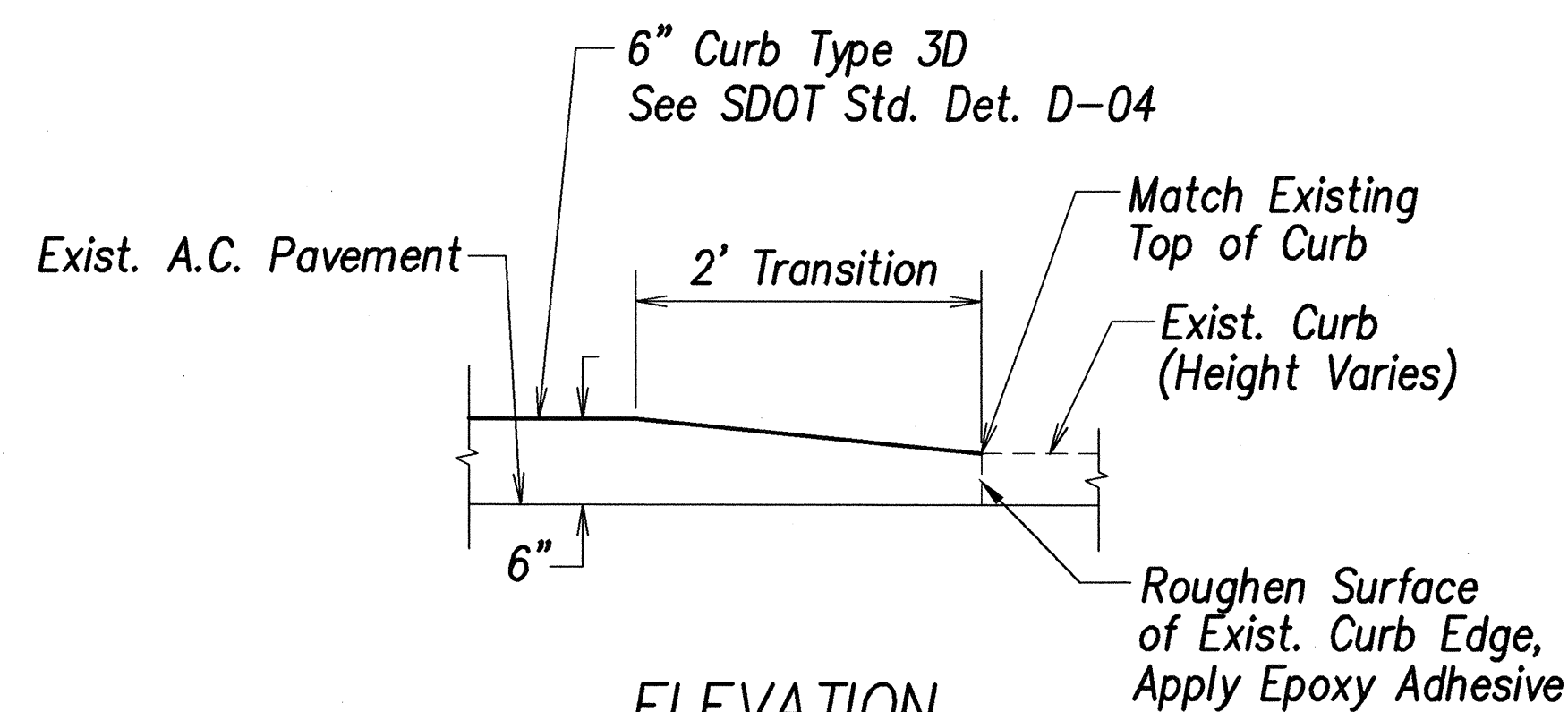


*For Road Pavement Section Thickness
See "Typical Sections" Shts. C-22 to C-41

PAVEMENT CONNECTION

SCALE: 1" = 2'-0"

Various C-75

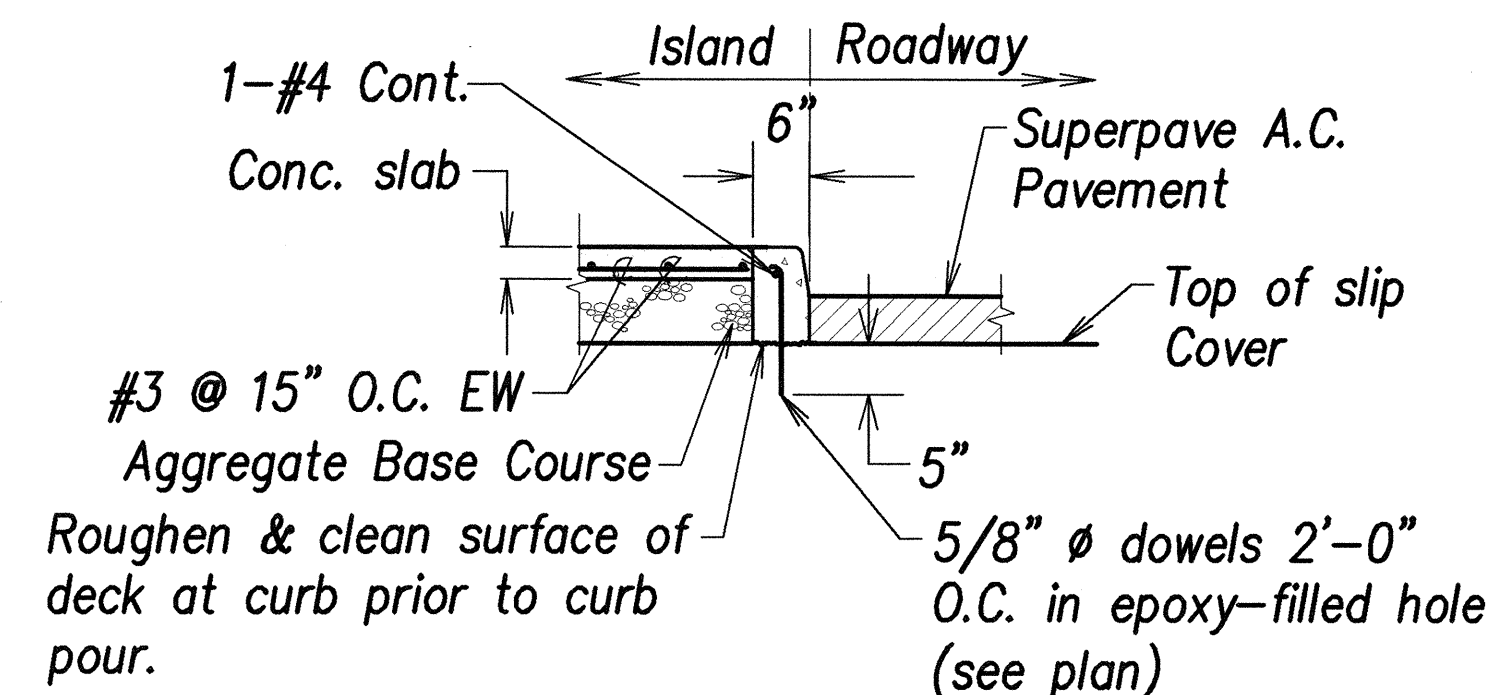


ELEVATION

CONCRETE CURB TRANSITION

SCALE: 1" = 1'-0"

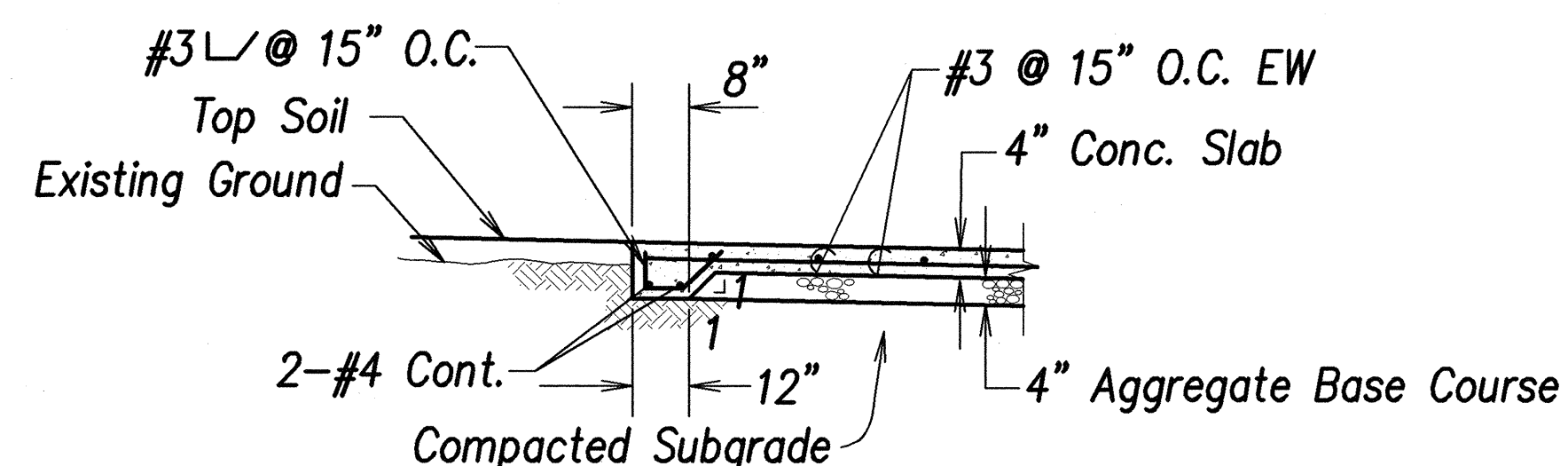
Various C-75



CURB ON SLIP COVER

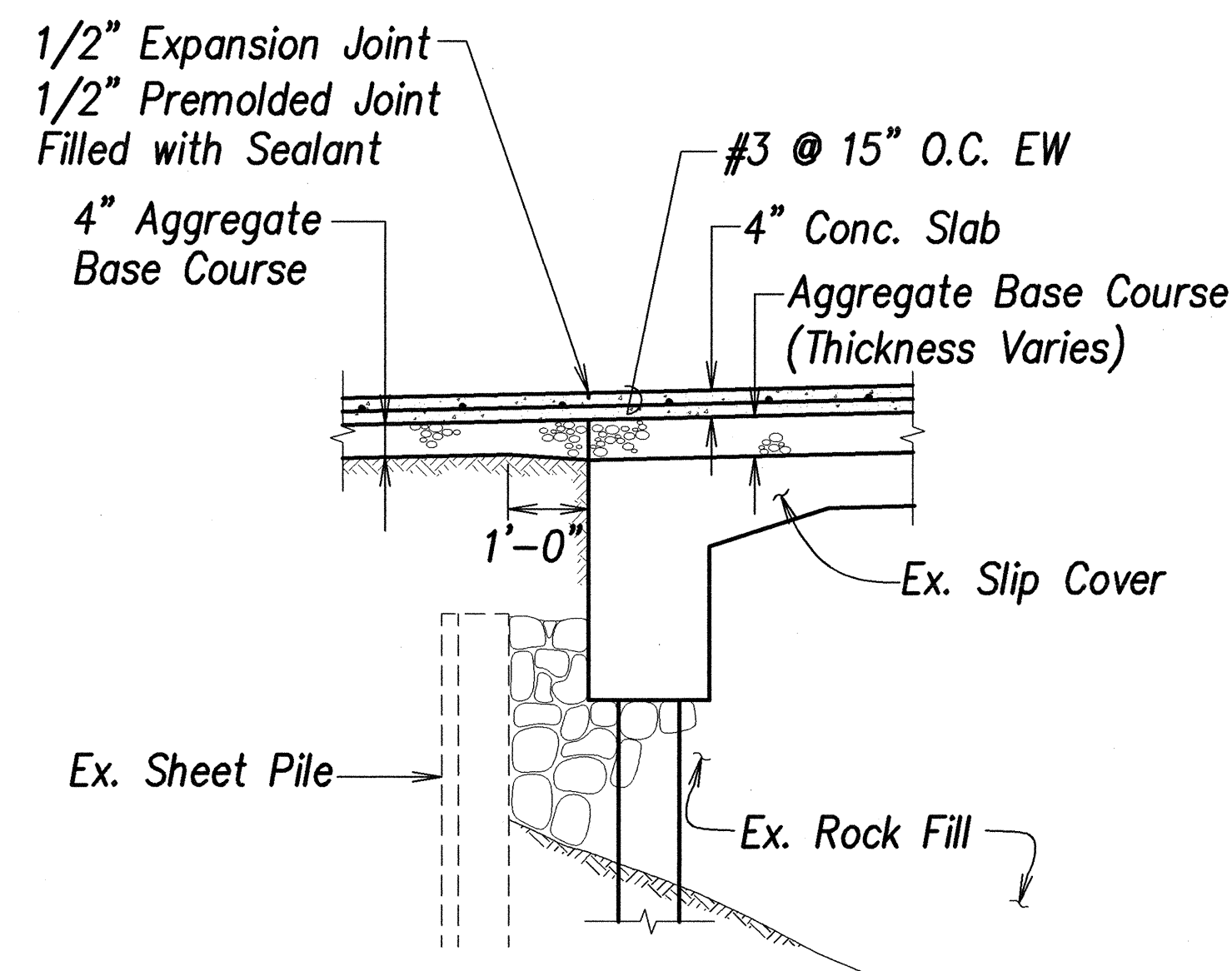
Scale: 1" = 2'-0"

C-72 C-75



SIDEWALK EDGE

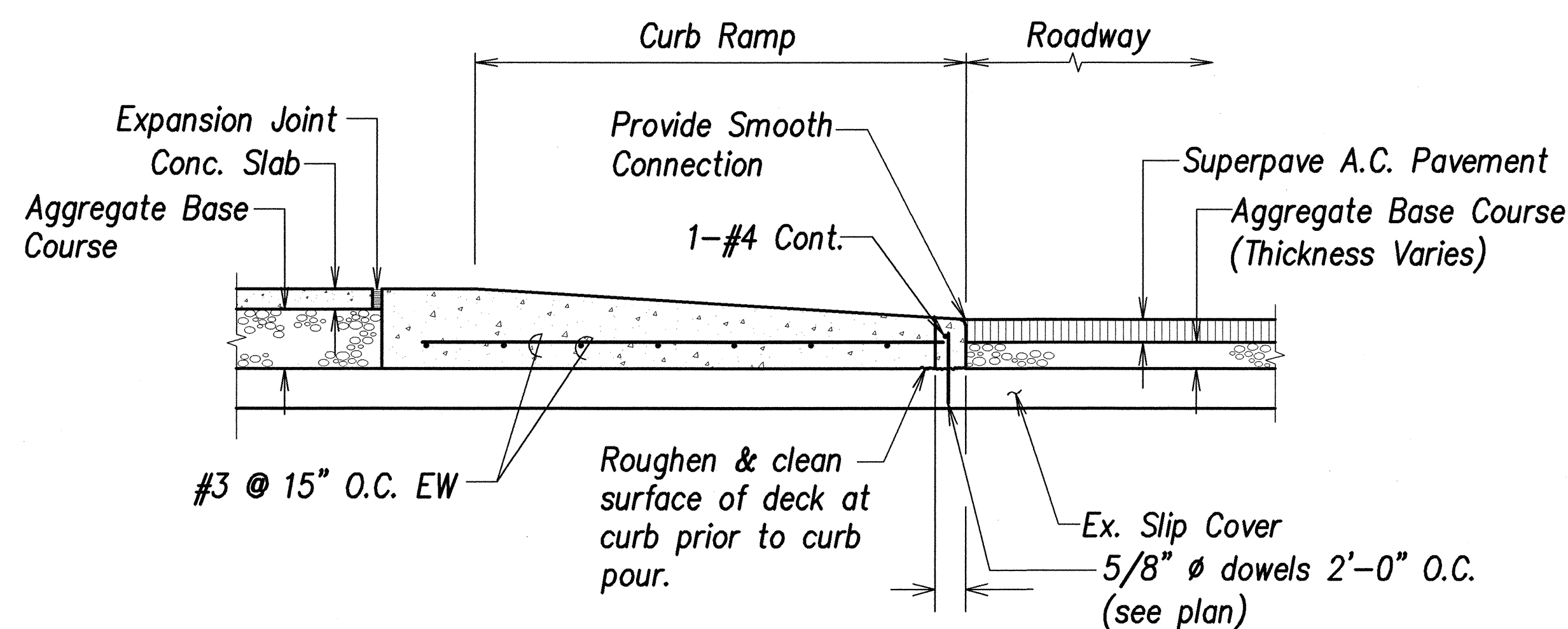
Scale: 1" = 2'-0" Various C-75



SIDEWALK ON SLIPCOVER

Scale: 1" = 2'-0"

C-72 C-75



CURB RAMP ON SLIPCOVER

Scale: 1" = 2'-0"

C-60 C-75



THIS WORK WAS PREPARED BY
ME OR UNDER MY SUPERVISION

SIGNATURE DATE

STATE OF HAWAII
DEPARTMENT OF TRANSPORTATION
HIGHWAYS DIVISION

ROADWAY DETAILS - 2

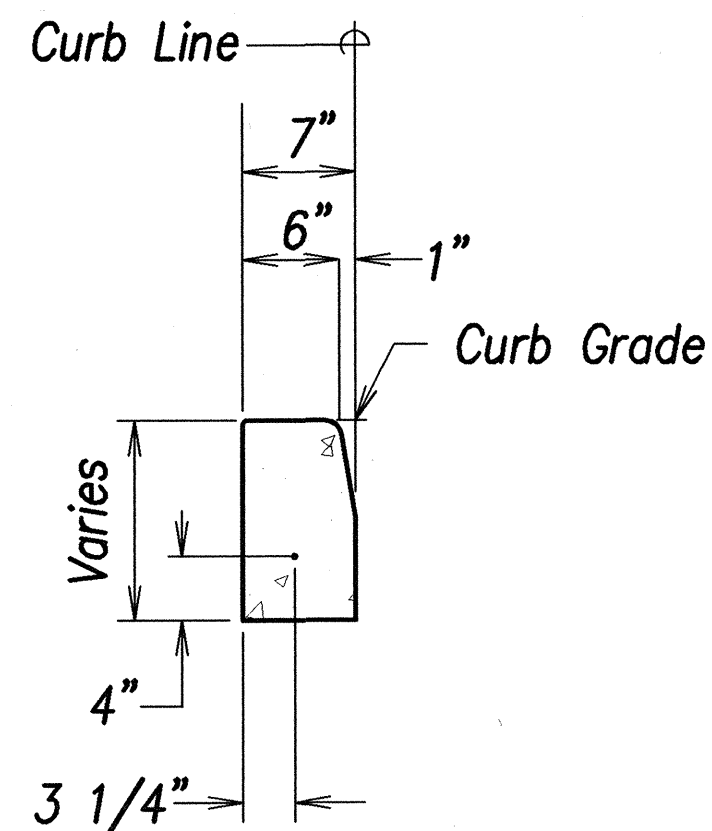
NIMITZ HIGHWAY REHABILITATION
SUMNER STREET TO QUEEN STREET
F.A.I. Proj. No. NH-092-1(25)

Scale: As shown

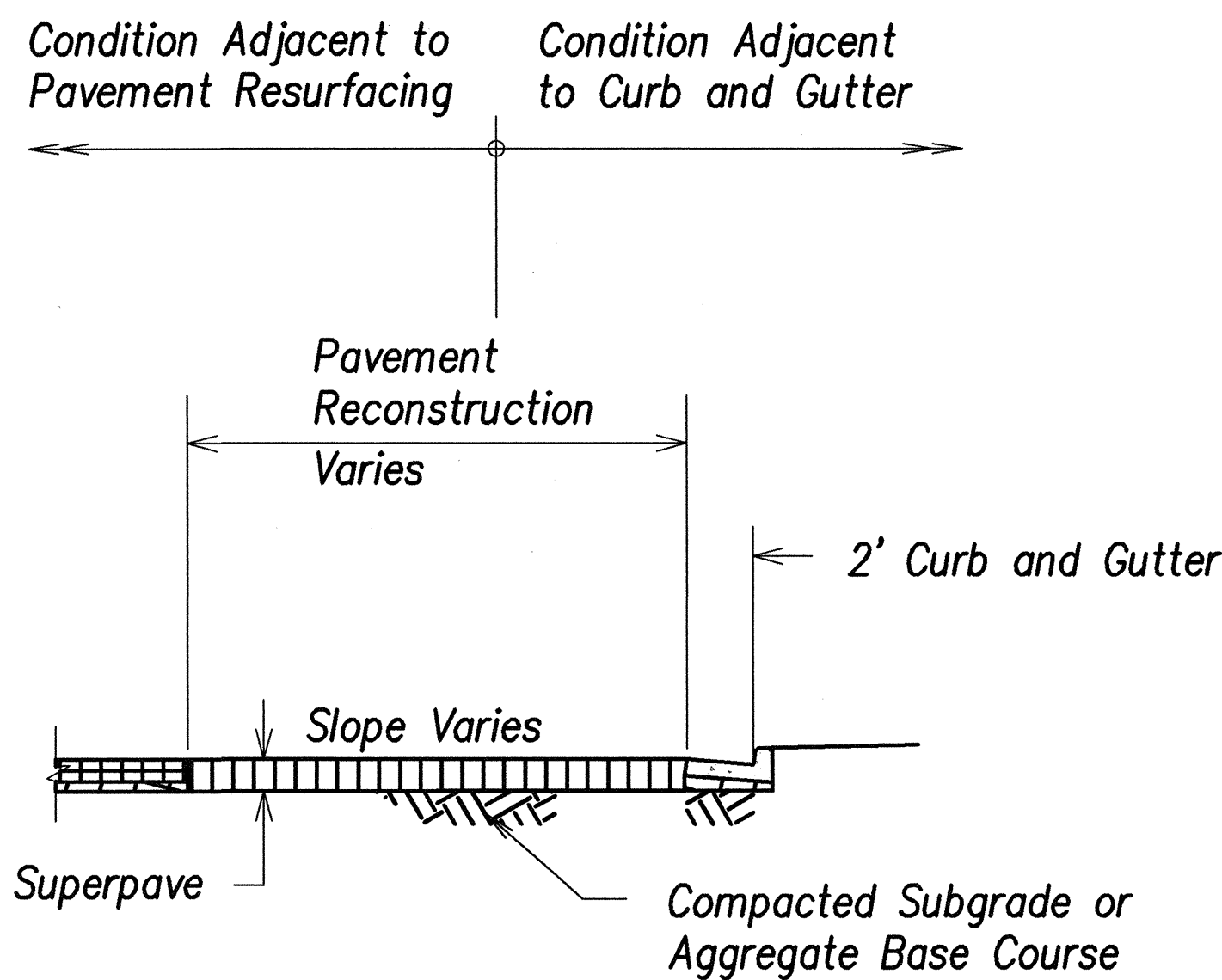
Date: 10/19/01

SHEET No. C-75 OF 107 SHEETS

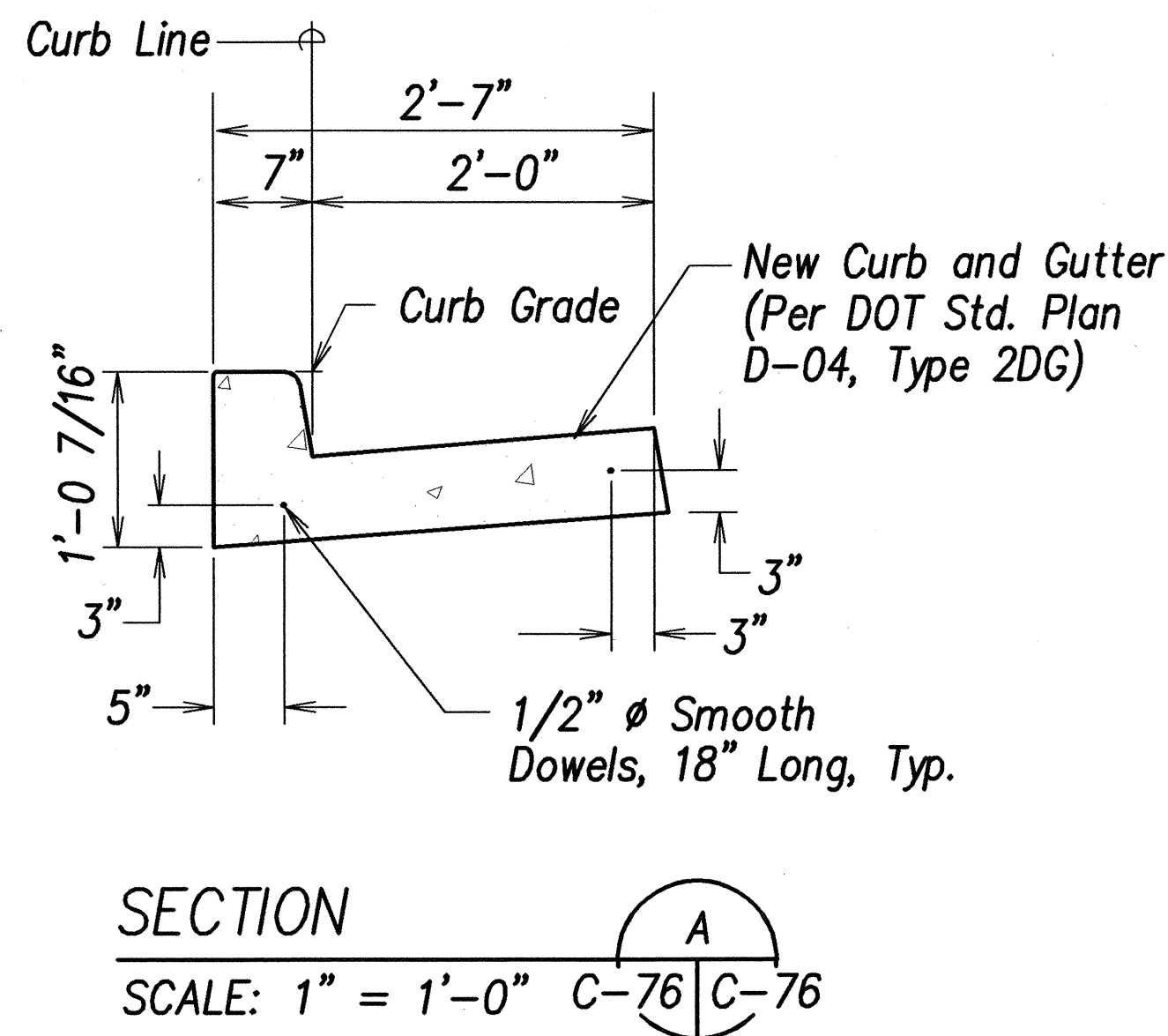
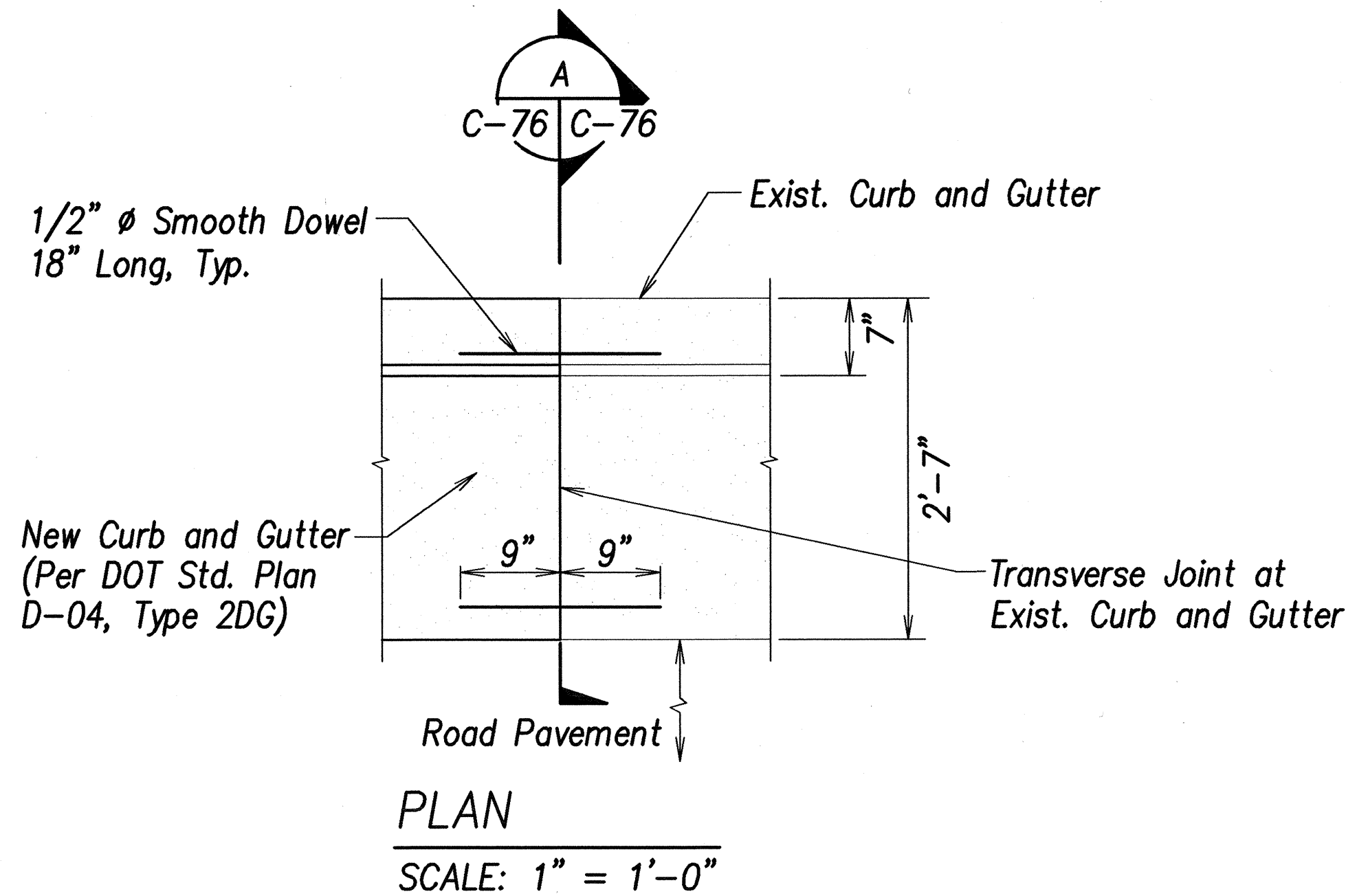
FED. ROAD DIST. NO.	STATE	FED. AID PROJ. NO.	FISCAL YEAR	SHEET NO.	TOTAL SHEETS
HAWAII	HAW.	NH-092-1(25)	2002	80	288



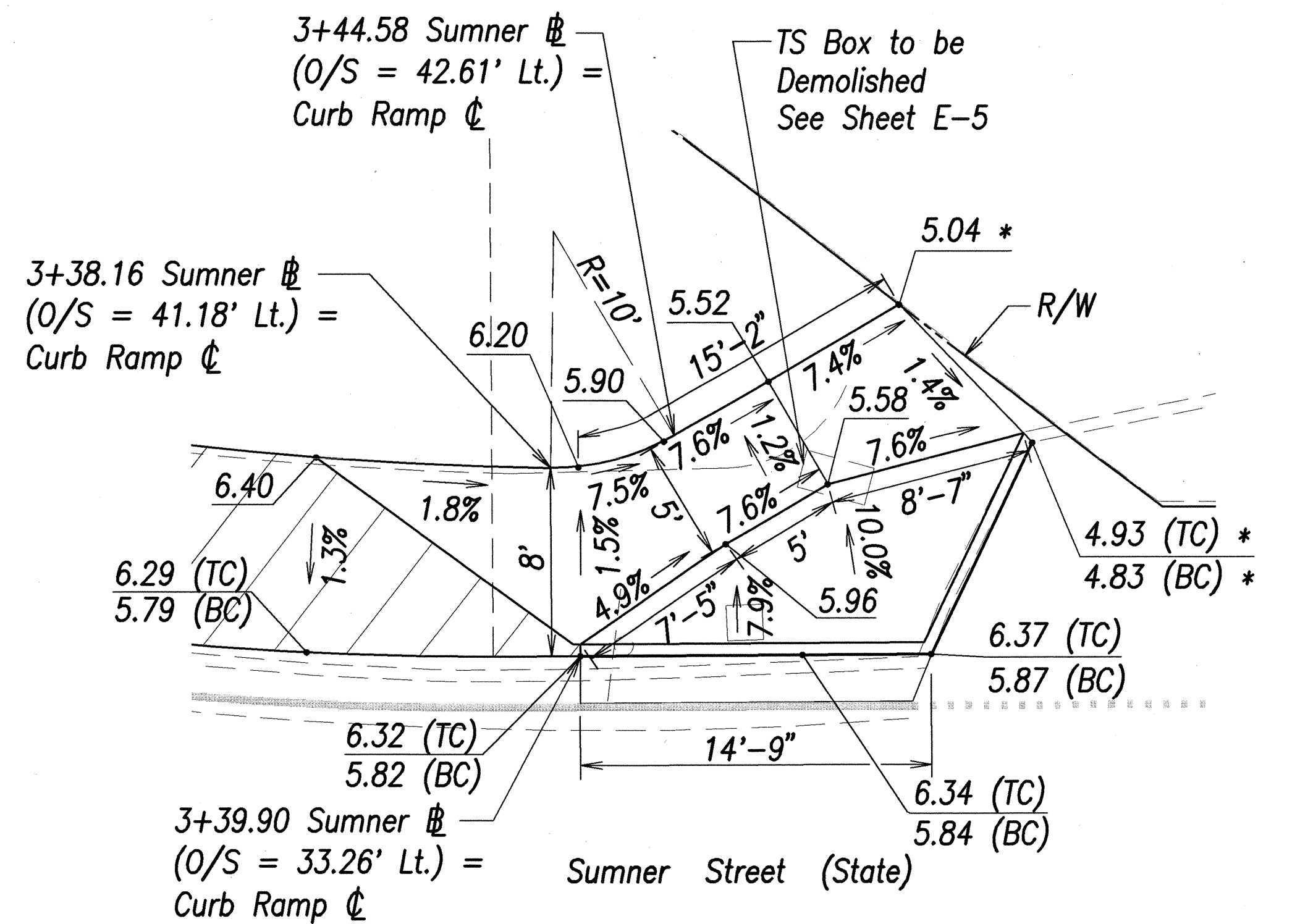
MODIFIED TYPE 3D CURB
SCALE: 1" = 1'-0"



TYPICAL PAVEMENT RECONSTRUCTION AREA
SCALE: 1" = 5'-0"



CURB AND GUTTER CONNECTION
SCALE: As Shown



LEGEND:

TC = Top of curb
BC = Bottom of curb

NOTE:

All grades shown are finished grades. The contractor shall verify in the field that the grades shown with an asterisk (*) are consistent with the existing grade at the indicated location and make necessary adjustments to make a smooth connection between new and existing surfaces. All adjusted surfaces shall be in full compliance with the accessibility requirements.

SIDEWALK RAMP
Scale: 1" = 5'-0"



THIS WORK WAS PREPARED BY
ME OR UNDER MY SUPERVISION
DATE: 4/15/04

STATE OF HAWAII
DEPARTMENT OF TRANSPORTATION
HIGHWAYS DIVISION

ROADWAY DETAILS - 3

NIMITZ HIGHWAY REHABILITATION
SUMNER STREET TO QUEEN STREET
F.A.I. Proj. No. NH-092-1(25)

Scale: As shown Date: 10/19/01

SHEET No. C-76 OF 107 SHEETS