



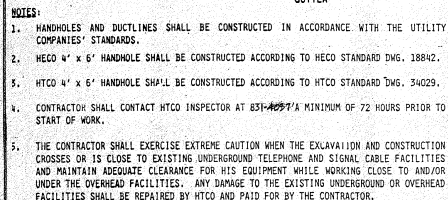
Technical drawing of a street lighting pole and luminaire assembly. The drawing includes the following callouts and dimensions:

- Callout B:** Located at the top left, pointing to a circular detail of the pole top.
- Callout D:** Located in the middle right, pointing to a circular detail of the luminaire housing.
- Callout E:** Located at the bottom right, pointing to a circular detail of the mounting bracket.
- Dimensions:**
 - 16" - 18" (vertical dimension on the left)
 - 8" - 10" (vertical dimension on the right)
 - 16" - 18" (horizontal dimension at the top)
 - 16" - 18" (horizontal dimension at the bottom)
 - 16" - 18" (horizontal dimension at the bottom right)
- Text Labels:**
 - PHOTO ELECTRIC CELL
 - FISHER PIERCE #7740 B-5-SPB
 - LUMINAIRE WITH HIGH PRESSURE SODIUM LAMP
 - HOT DIPPED GALV. STEEL POLE AFTER FABRICATION (11 GAUGE MIN.)
 - NOTE: POLE SHALL BE FREE OF WHITE RUST; POLE SHALL WITHSTAND 80 MPA SUSTAINED WIND LOAD AND 100 MPH GUST
 - APPLY ALKALINE BASE CATALY PRIMERS TO MINIMIZE CORROSION.
 - REGULAR ST. LT. STANDARD 30' SHAFT
 - FINISH GRADE
 - CONC. WALK
 - CONC. CURB AND GUTTER
 - DIAGONAL MOUNTING BRACKET TO TOP OF WIND PIVEMENT (15' - 6")
 - 16" - 18" (vertical dimension on the left)
 - 16" - 18" (horizontal dimension at the top)
 - 16" - 18" (horizontal dimension at the bottom)
 - 16" - 18" (horizontal dimension at the bottom right)

Diagram illustrating the components of a standard street lighting fixture, labeled as "PLAN AT BASE". The diagram shows a square base with four mounting holes. A central vertical rod is shown passing through the base. Labels include:

- PROPERTY SIDE
- STREET SIDE
- GROUND ROD (ADDITIONAL AS REQUIRED)
- (5" DIA.) BOLT CIRCLE PER POLE MANUFACTURER
- TO ADJACENT LIGHT STANDARD
- DRAINAGE CHASE
- CURB

PLAN AT BASE



POLE SHAFT
4"-10" DIA. 3' LONG
CONCRETE
ANCHOR BOLTS
& NUTS
10' MIN-USE, 600V
FIBERGLASS 2" DIA. SLACK
6A FUSE CONNECTOR
KIT, 1/2" NPT
FUSE HOLDER
DOOR OPENING
#6 B.C. GROUND
GROUND LUG
3" GROUT
FINISH GRADE
HOT-DIPPED GALV. LEVEL
NUTS & WASHERS (8 TOTAL)
THERMOSET CONDUIT OR
APPROVED EQUAL
#6 B.C. GND, 18" SLACK
1/2" DIA. PVC SLEEVE
ANCHOR, PVC
CONCRETE, 1/2"
1"404" DIA. (4 TOTAL)
NOT DIPPED GALV. FOR
ENTIRE LENGTH
ADDITIONAL GND. ROD AS
REQUIRED IF GND. RESISTANCE
EXCEEDS 25 OHMS (NMS
ALLOWED)
CONCRETE: MINIMUM
COMPRESSIVE STRENGTH OF
2500 PSI @ 28 DAYS

ALL NEUTRAL CONDUCTORS SHALL HAVE
WET INSULATION, ANY OTHER METHOD
OF IDENTIFICATION IS UNACCEPTABLE
POLE BASE COVER
SPLIT BOLT CONNECTOR,
WIRE AFTER INSTALLATION
2/6B MIN-USE, 600V
PLASTIC BRUSHING, SEAL, OPENING WITH
DOUST SEAL* AFTER INSTALLING CABLES
NEUTRAL MUST BE GROUND TO
GROUND ROD
HEIGHT OF ANCHOR BOLTS
ABOVE CONC. BASE
DOOR AND CHAMFER TO FINISH
AFTER FINISH IS LEVEL AND PLUMB
2" DIA. WEDGELINE
(TOWARD CURB)
22" SQ. SECTION
2" DIA. ROUND SECTION
DALV. WIRE MESH
6" x 6" x 10'/10,
ONE WRAP
2" CLEAR
GROUND ROD
5/8" DIA. 10'-0"
COPPERWELD

BACK VIEW OF COVER

SIDE VIEW OF COVER

TOP VIEW OF PLATE COVER

SECTION A-A

SECTION THROUGH COVER

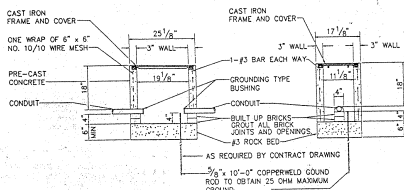
NOTES

1. SHEET OF COVER ARE SLIGHTLY BE FACILITATE INSTALLATION. BEING FROM TOP TO BOTTOM.
2. TO BE CAST FROM DIET IRON.
3. TO COVER B&B STREET LIGHT PO DRAWING NO. A-104.

TOP VIEW OF FRAME

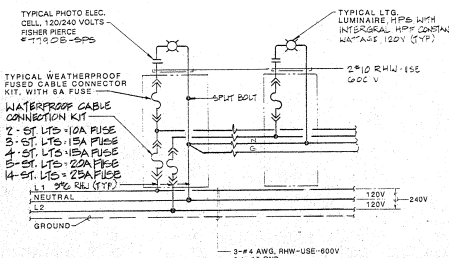
SECTION B-B

SECTION B-



PRECAST PULLBOX

NOTE: SUBMIT SHOP DRAWINGS FOR BOX, FRAME AND COVER FOR MATERIAL APPROVAL



STREET LIGHTING NOTES

1. STREET LIGHT SYSTEM FOR THIS PROJECT SHALL BE UNDER EXISTING HAWAIIAN ELECTRIC COMPANY, INC. 240/120 VOLT SERVICE AREA CODE 39.

2. STREET LIGHT NUMBERS FOR THIS PROJECT SHALL BE 310 TO 316 INCLUSIVE.

3. ALL SECONDARY CIRCUIT EXTENSIONS TO CITY AND COUNTY TRANSFORMER SHALL BE PROVIDED BY CONTRACTOR.

4. CONTRACTOR SHALL BE RESPONSIBLE FOR COORDINATING AND INFORMING THE CITY AND COUNTY OF STREET LIGHT LOCATIONS ON PROJECT SITE.

5. CONTRACTOR SHALL NOTIFY AND COORDINATE WORK WITH ELECTRICAL AND MAINTENANCE SERVICES DIVISION, DEPARTMENT OF TRANSPORTATION SERVICES 72 HOURS IN ADVANCE OF COMMENCING INSTALLATION OF STREET LIGHT SYSTEM. (PHONE NO. 828-4450)

6. ALL LUMINAIRE SHALL BE HIGH PRESSURE SODIUM VAPOR TYPE WITH LAMP VOLTAGE, WATTAGE AND IES TYPE LIGHT DISTRIBUTION AS INDICATED ON PLAN.

7. FOR TYPICAL CONSTRUCTION DETAILS SEE THIS SHEET ALSO REFER TO APPLICABLE STANDARD DETAILS OF ELECTRICAL AND MAINTENANCE SERVICES DIVISION, DEPARTMENT OF TRANSPORTATION SERVICES.

8. CONTRACTOR SHALL STENCIL DATE OF INSTALLATION ON BOTTOM OF PHOTOCHEL.

9. LUMINAIRE AND POLE COUNT. POLES: 30' WITH TRANSFORMER BASE: 7- EA.
LUMINAIRE: 150W - HPS - 7- EA.

10. CONTRACTOR SHALL MAINTAIN ONE SET OF APPROVED PLANS AT PROJECT SITE AT ALL TIMES DURING CONSTRUCTION WORK.

11. CONTRACTOR SHALL OBTAIN WITH H.E.C.O. TO ENERGIZE STREET LIGHTS A MINIMUM OF 6 HOURS FOR FINAL INSPECTION AND ACCEPTANCE. CONTRACTOR SHALL PAY FOR ALL COSTS OF TESTING.

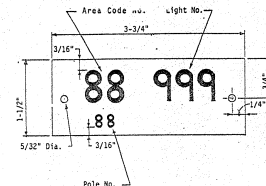
12. FINAL ACCEPTANCE INSPECTION WILL BE UNDERTAKEN ONLY AFTER ALL WORK HAS BEEN COMPLETED AND THE "AS-BUILT" TRACINGS HAVE BEEN SUBMITTED TO THE CITY AND COUNTY OF HAWAII FOR CONSTRUCTION COMPLETION.

13. AFTER COMPLETION OF FINAL INSPECTION WITH ENGINEER AND CITY AND COUNTY, CONTRACTOR SHALL OBTAIN WRITTEN ACCEPTANCE OF STREET LIGHT SYSTEM FROM ELECTRICAL AND MAINTENANCE SERVICES DIVISION DEPARTMENT OF TRANSPORTATION SERVICES, CITY AND COUNTY OF HONOLULU.

14. CONTRACTOR SHALL MEASURE GROUND RESISTANCE OF EACH LIGHT STANDARD, RECORD SAME AND SUBMIT TO ELECTRICAL AND MAINTENANCE SERVICES, CITY AND COUNTY OF HONOLULU.

15. ALL WORK SHALL BE DONE IN ACCORDANCE WITH THE LATEST RULES AND STANDARDS OF THE NEC AND SHALL COMPLY WITH THE LIGHTING ORDINANCES OF THE STATE OF HAWAII.

16. ALL WORK SHALL BE DONE IN ACCORDANCE WITH PLANS AND SPECIFICATIONS UNLESS OTHERWISE ALTERED OR REVISED.



NOTES

1. USE 2-PLY LAMINATED FLEXIBLE PLASTIC, BLACK-WHITE THICKNESS: BLACK CAP SHEET = .010", WHITE BASE SHEET = .052".
2. AREA CODE NUMBER AND LIGHT NUMBER SIZE SHALL BE 5/8" HIGH, 1/8" STROKE, WHITE IN COLOR (NUMBER AS REQUIRED).
3. POLE NUMBER SIZE SHALL BE 1/4" HIGH, 3/32" STROKE, WHITE IN COLOR (NUMBER AS REQUIRED).
4. ATTACH TO ALUMINUM AND STEEL POLES WITH NO. 8 STAINLESS STEEL, 1/2" LONG DRIVE SCREWS IN 1/8" DRILL HOLE, ATTACH TO WOOD POLES WITH #4 ALUMINUM NAILS.
5. NUMBERS ARE INSCRIBED BY CUTTING THROUGH "BLACK CAP SHEET" TO EXPOSE "WHITE" LETTERS.

D STREET LIGHT I.D. TAG DETAIL
178 NOT TO SCALE

