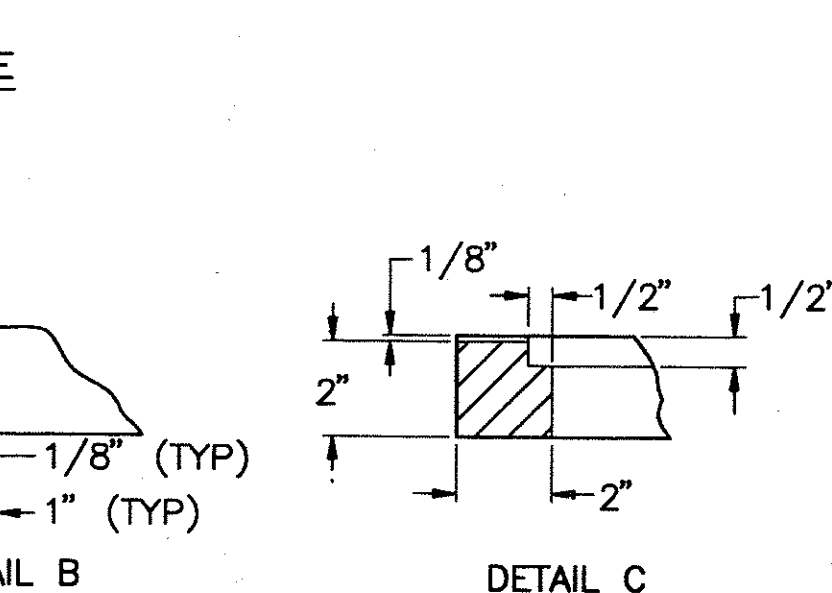
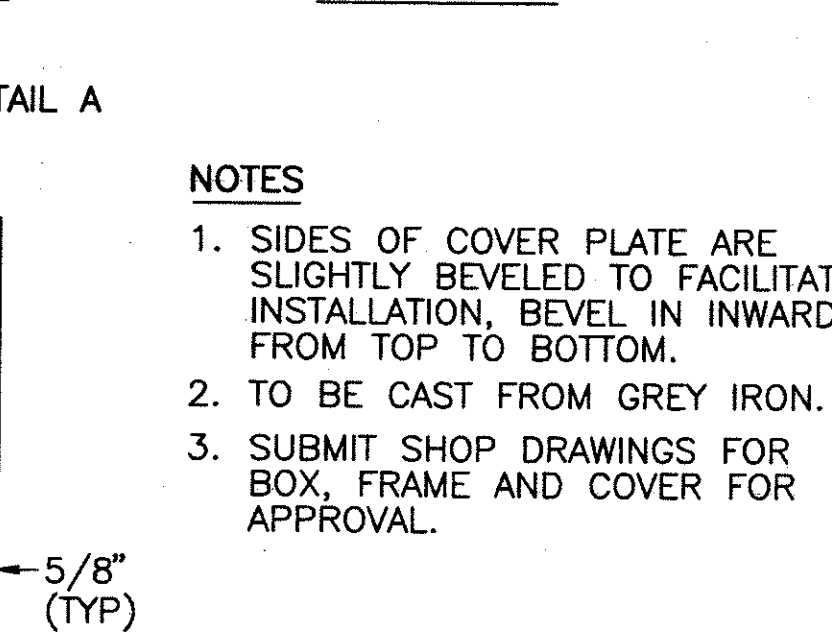
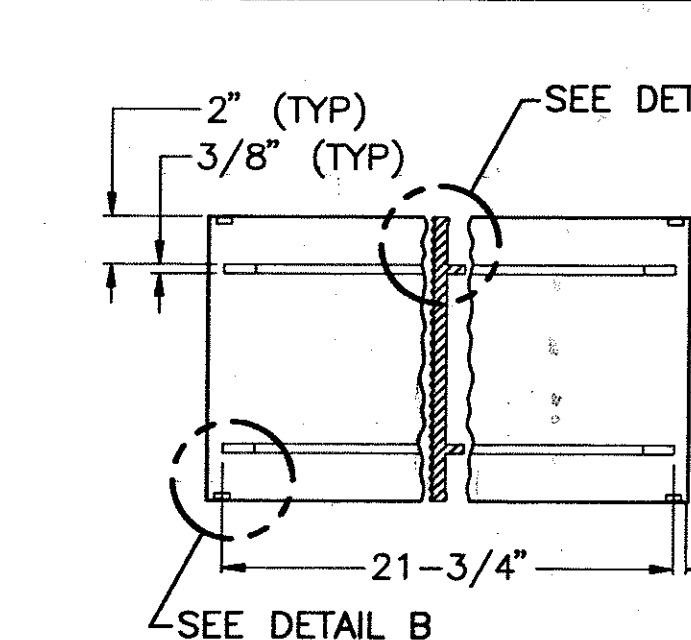
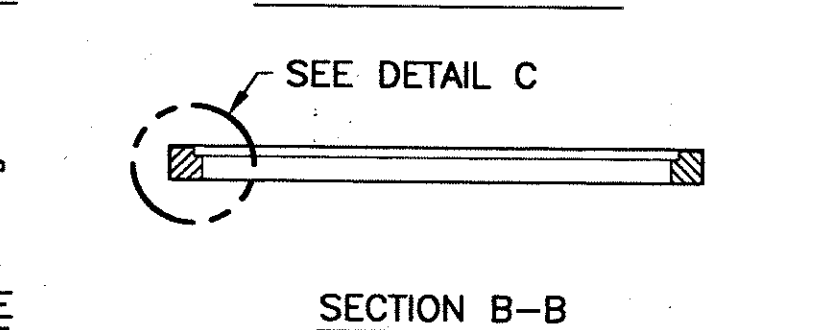
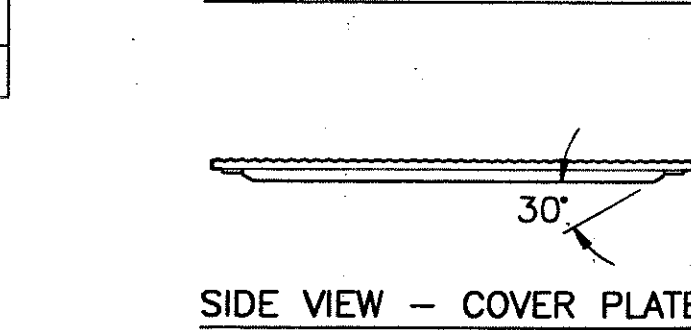
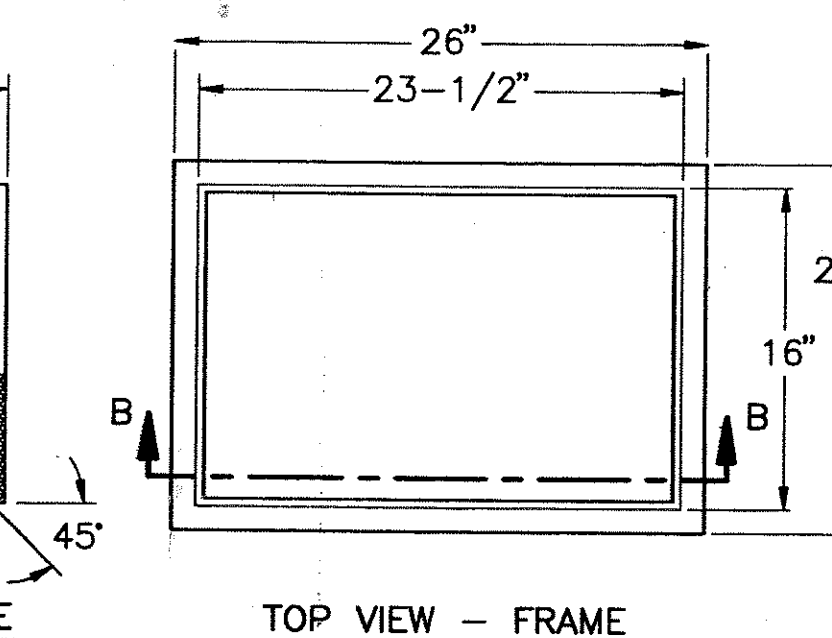
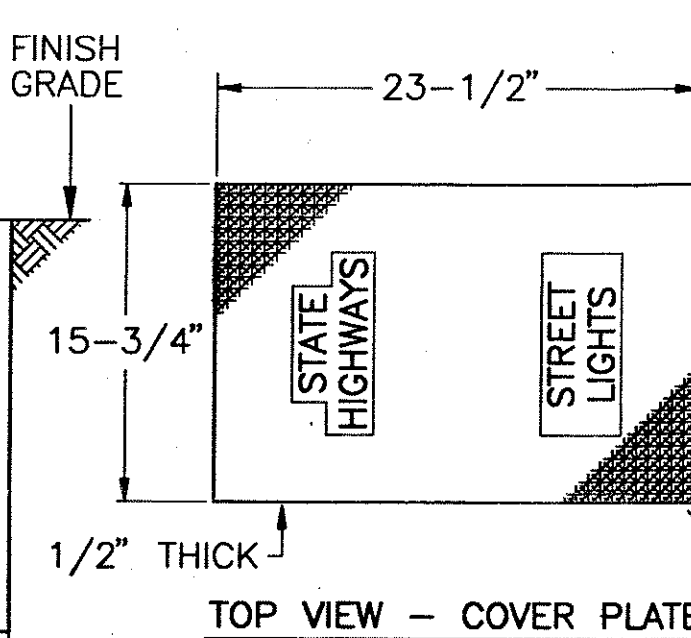
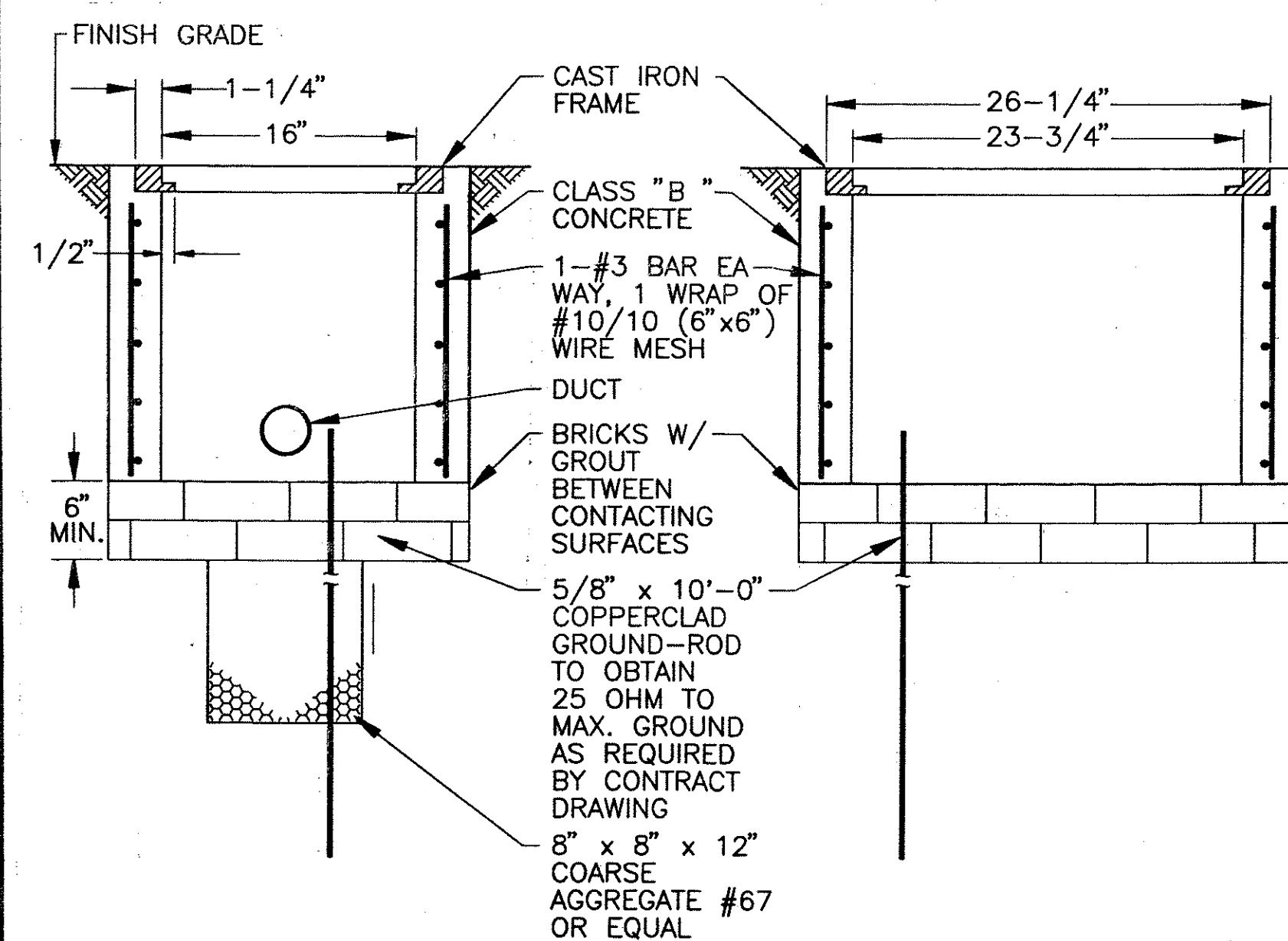
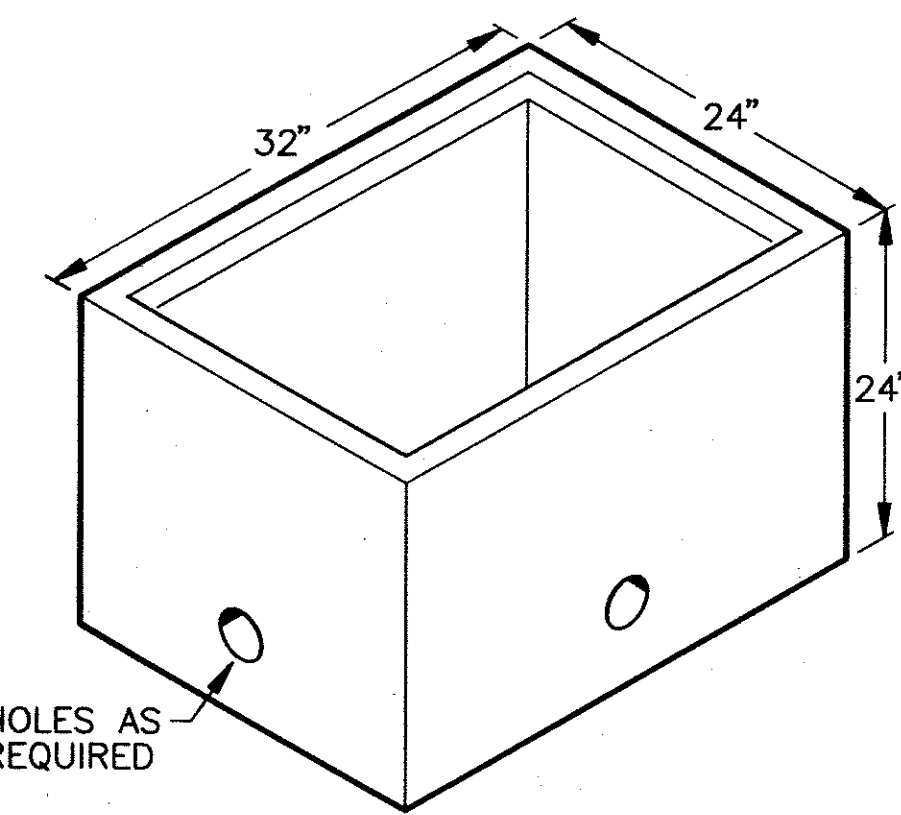


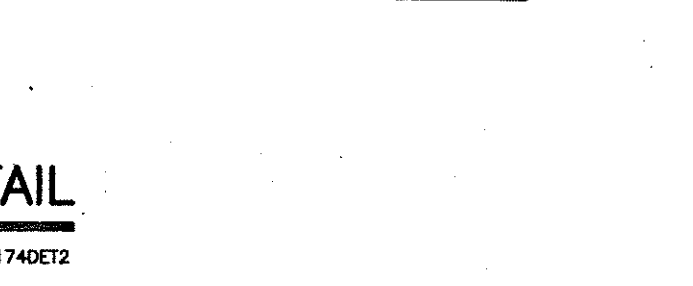
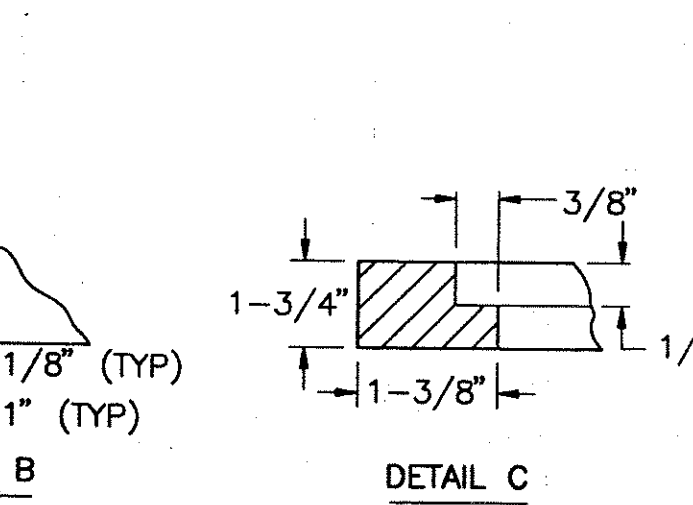
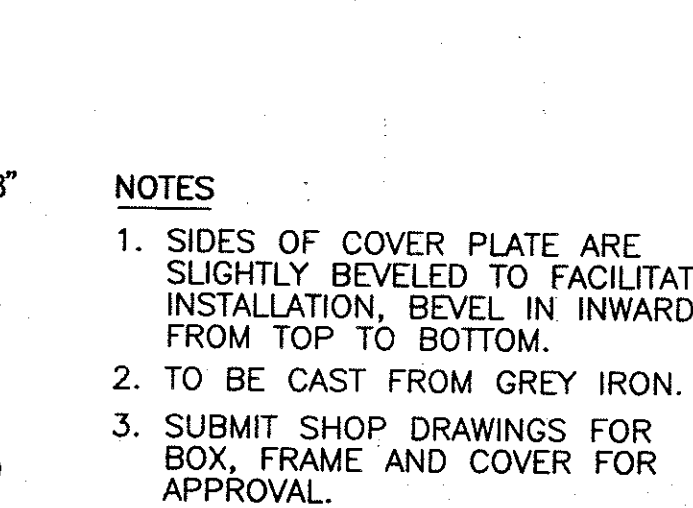
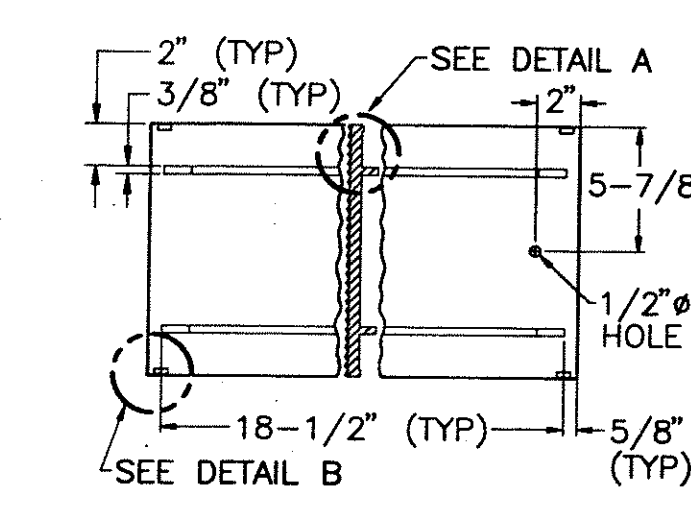
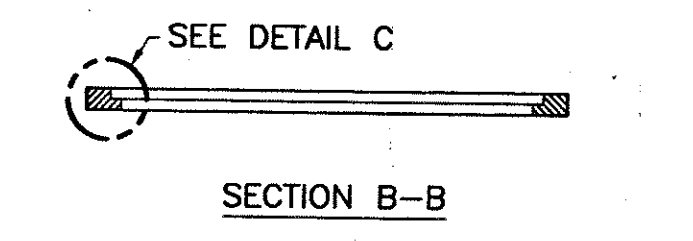
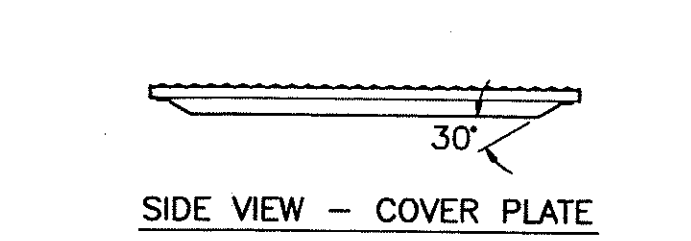
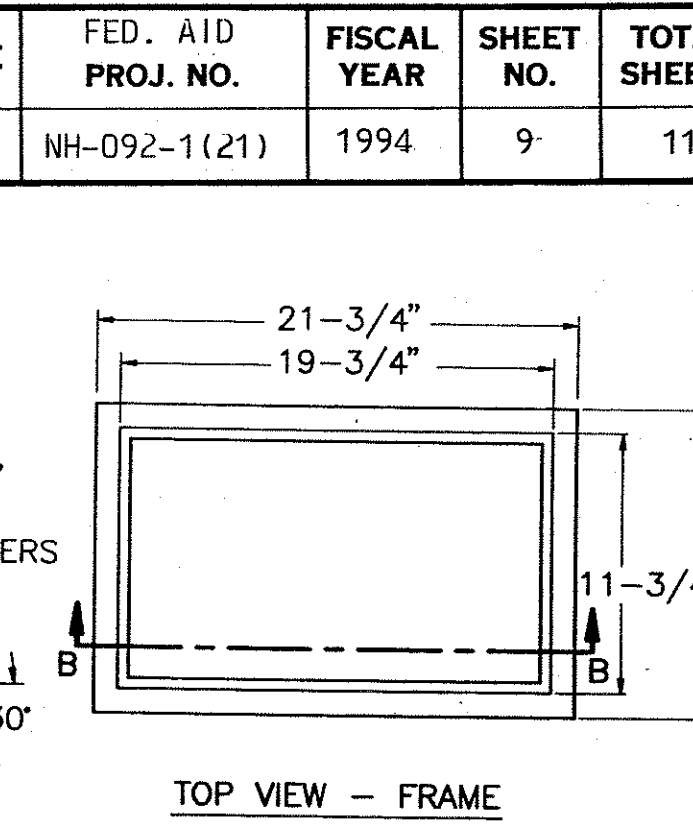
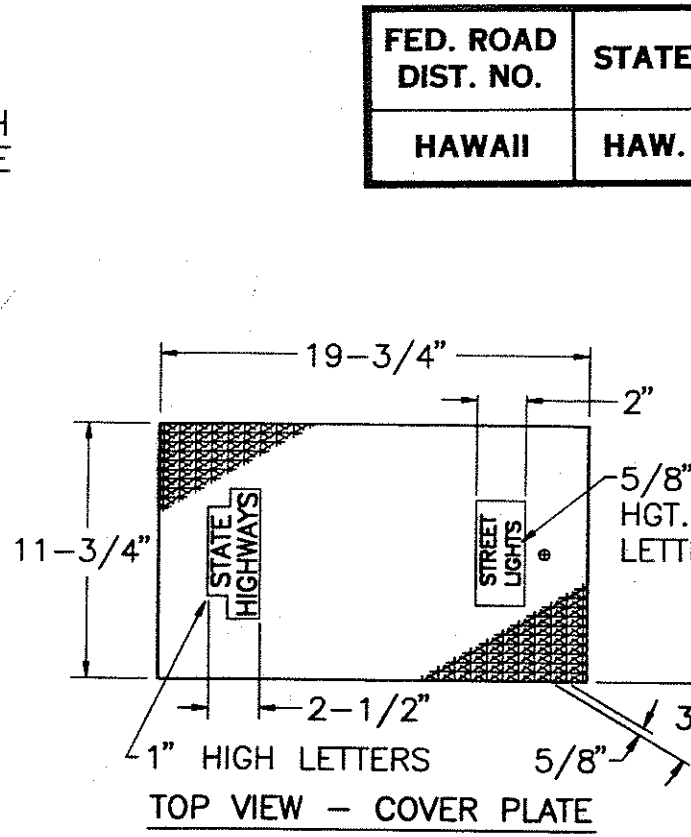
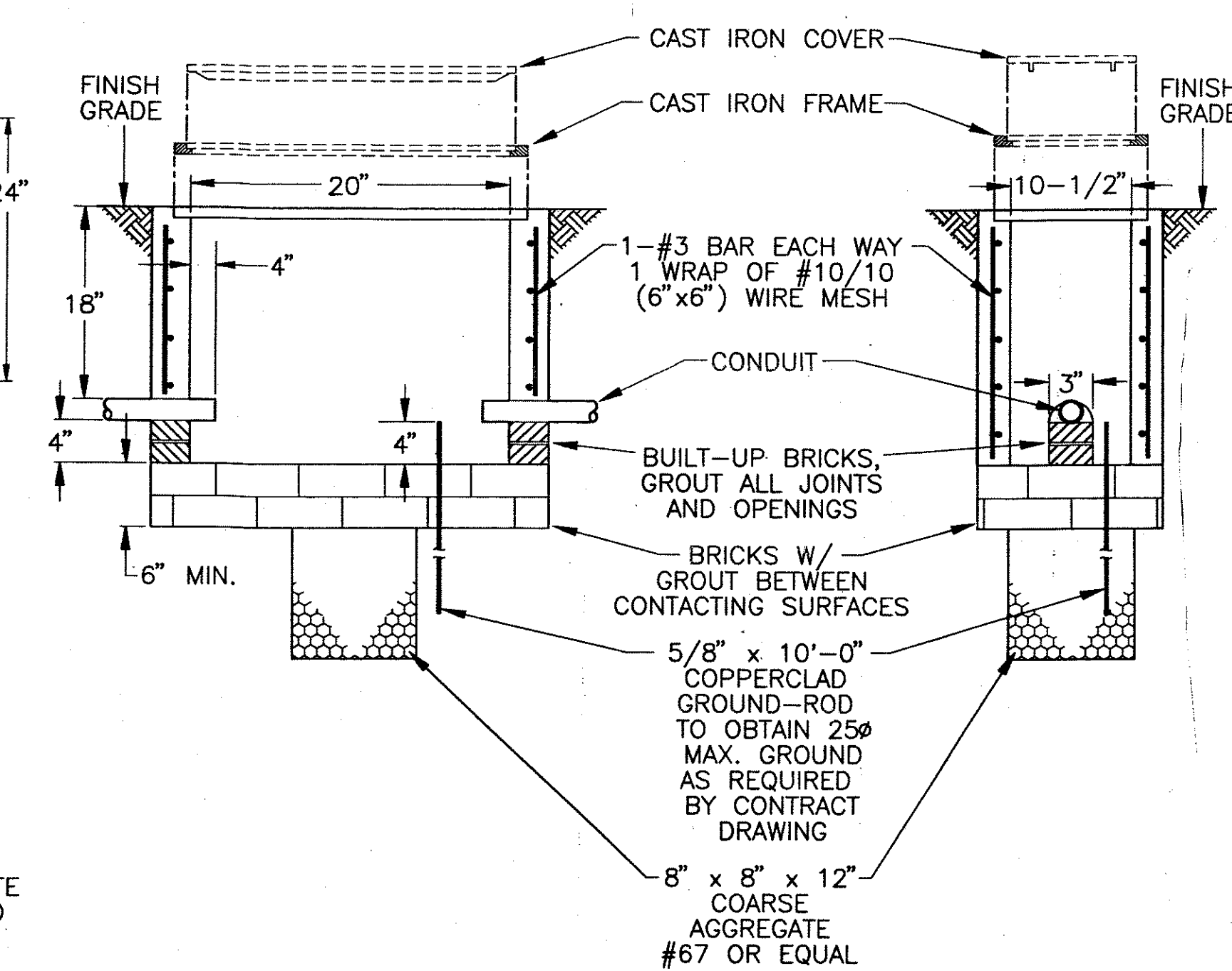
FED. ROAD DIST. NO.	STATE	FED. AID PROJ. NO.	FISCAL YEAR	SHEET NO.	TOTAL SHEETS
HAWAII	HAW.	NH-092-1(21)	1994	9	11



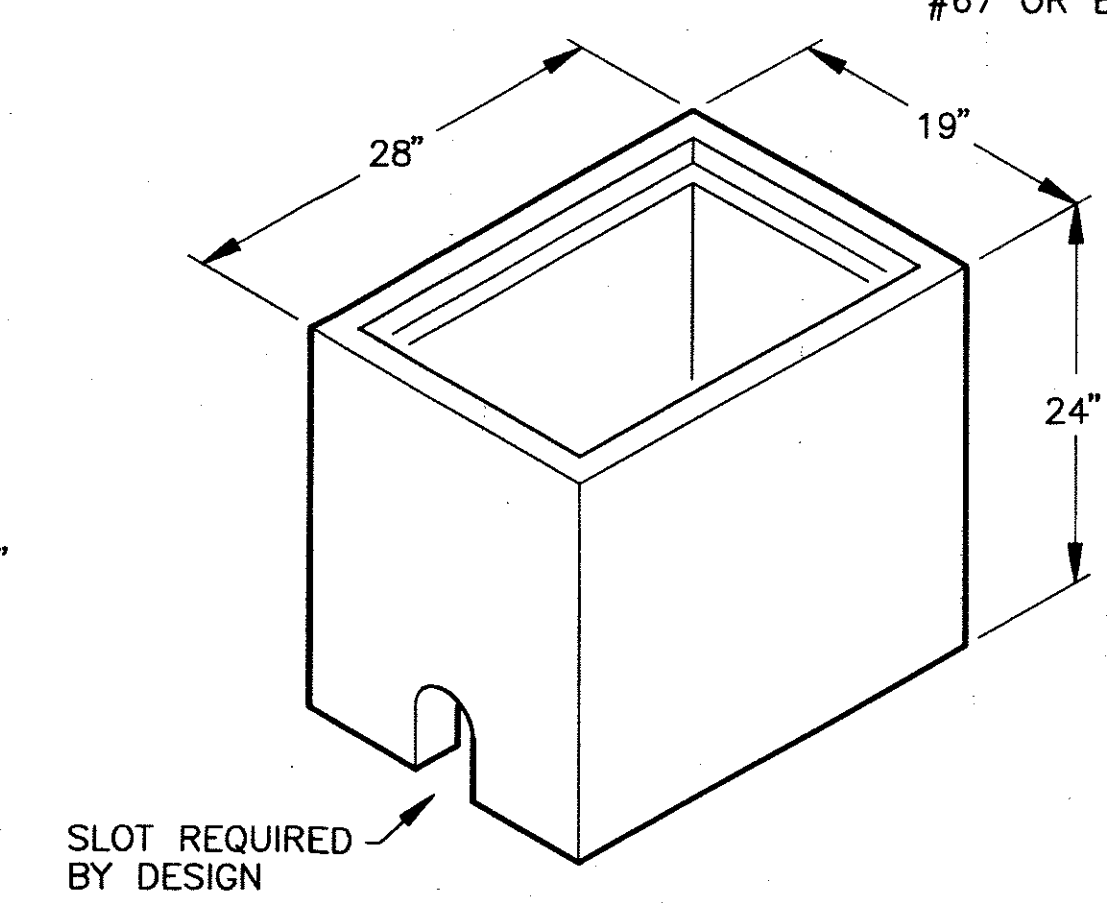
- NOTES
1. SIDES OF COVER PLATE ARE SLIGHTLY BEVELED TO FACILITATE INSTALLATION, BEVEL IN INWARD FROM TOP TO BOTTOM.
  2. TO BE CAST FROM GREY IRON.
  3. SUBMIT SHOP DRAWINGS FOR BOX, FRAME AND COVER FOR APPROVAL.



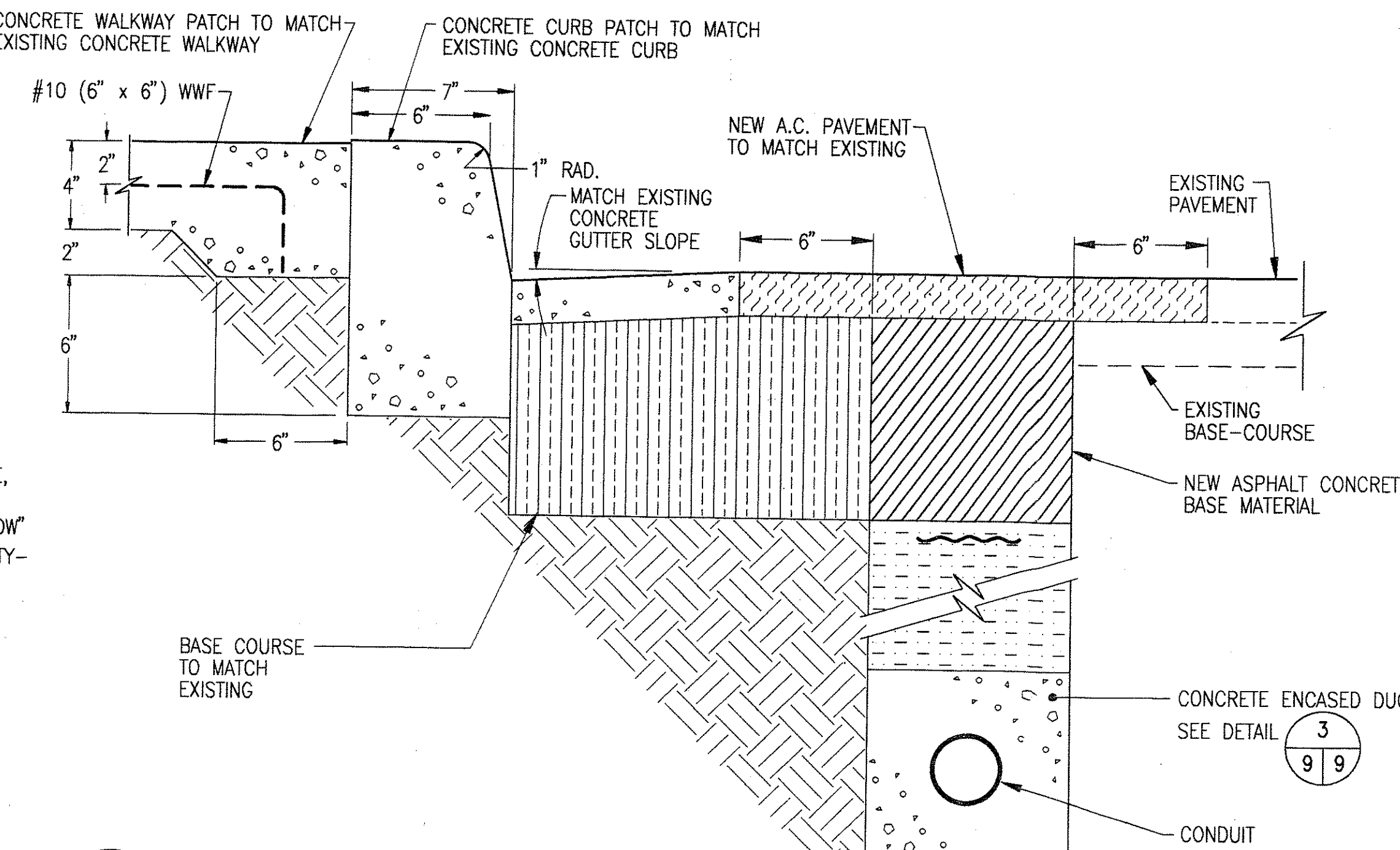
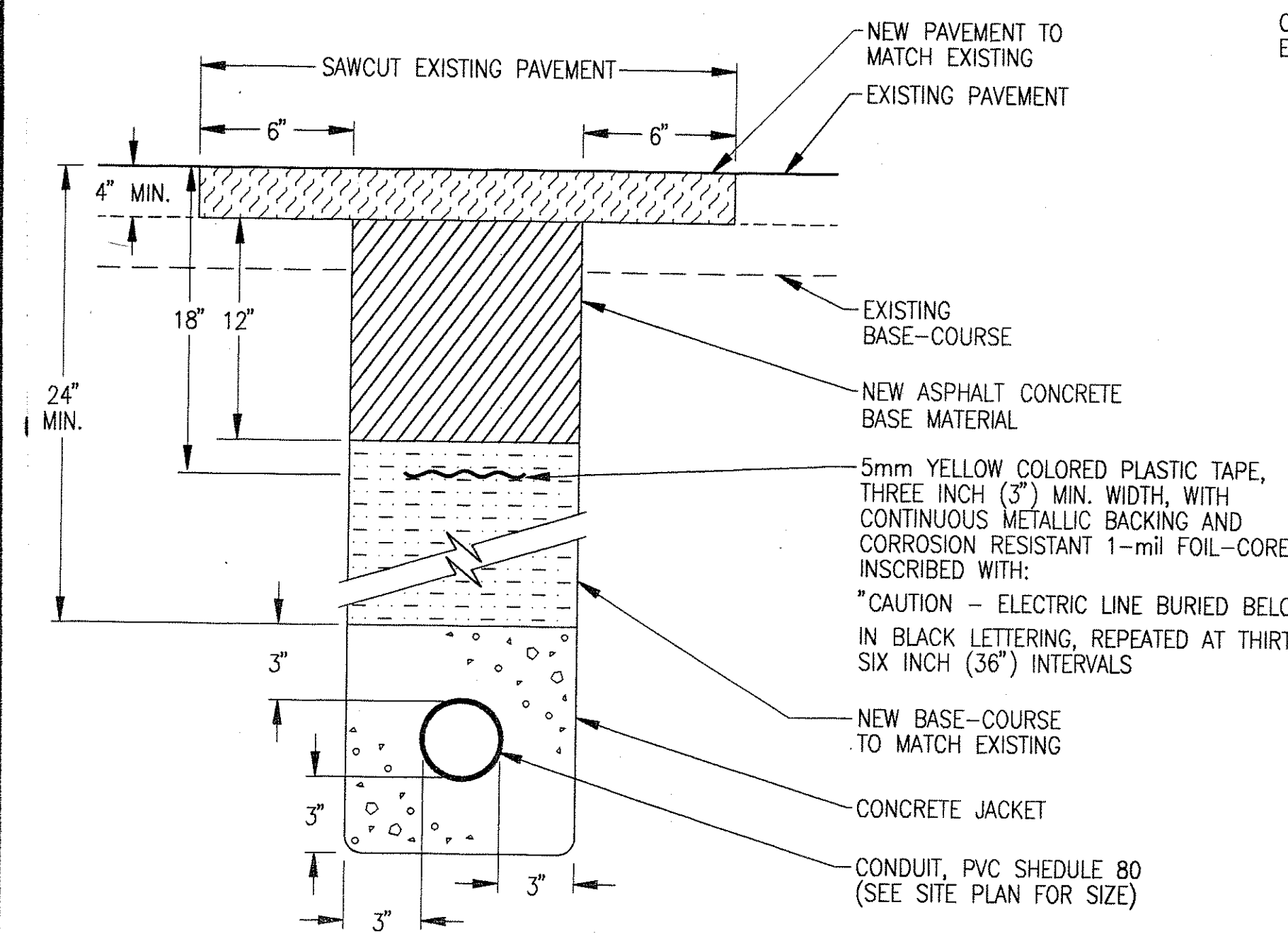
1 TYPE "A" STREET LIGHT PULLBOX, FRAME, AND COVER DETAIL  
2 9 NOT TO SCALE CAD : 9174DET2



- NOTES
1. SIDES OF COVER PLATE ARE SLIGHTLY BEVELED TO FACILITATE INSTALLATION, BEVEL IN INWARD FROM TOP TO BOTTOM.
  2. TO BE CAST FROM GREY IRON.
  3. SUBMIT SHOP DRAWINGS FOR BOX, FRAME AND COVER FOR APPROVAL.



2 TYPE "B" STREET LIGHT PULLBOX, FRAME, AND COVER DETAIL  
2 9 NOT TO SCALE CAD : 9174DET2



3 DUCT SECTION  
2 9 NOT TO SCALE CAD : 9174DET2

4 CURB PATCHING DETAIL  
2 9 NOT TO SCALE CAD : 9174DET2

DATE	
SURVEY PLOTTED BY	
DRAWN BY	
DESIGNED BY	
QUANTITIES BY	
CHECKED BY	
ORIGINAL PLAN	
NOTE BOOK	
No.	

ALBERT S. C. CHONG  
REGISTERED PROFESSIONAL ENGINEER  
No. 1003-E  
HAWAII, U.S.A.

THIS WORK WAS PREPARED BY ME OR UNDER MY SUPERVISION  
*Albert S. C. Chong*

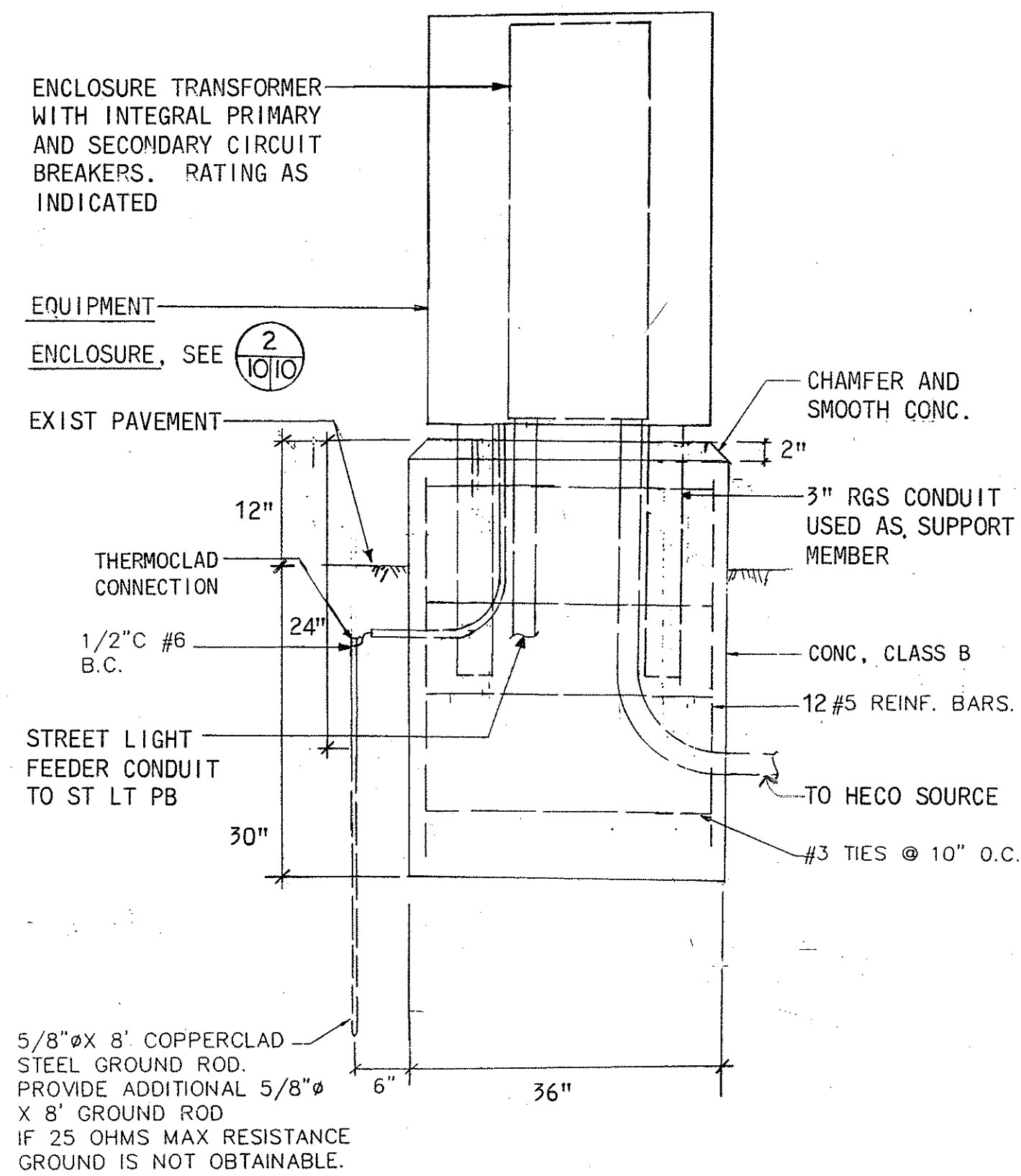
6/17/94	REVISED DETAILS NO. 3 AND 4
DATE	DESCRIPTION

STATE OF HAWAII  
DEPARTMENT OF TRANSPORTATION  
HIGHWAYS DIVISION  
MISCELLANEOUS DETAILS

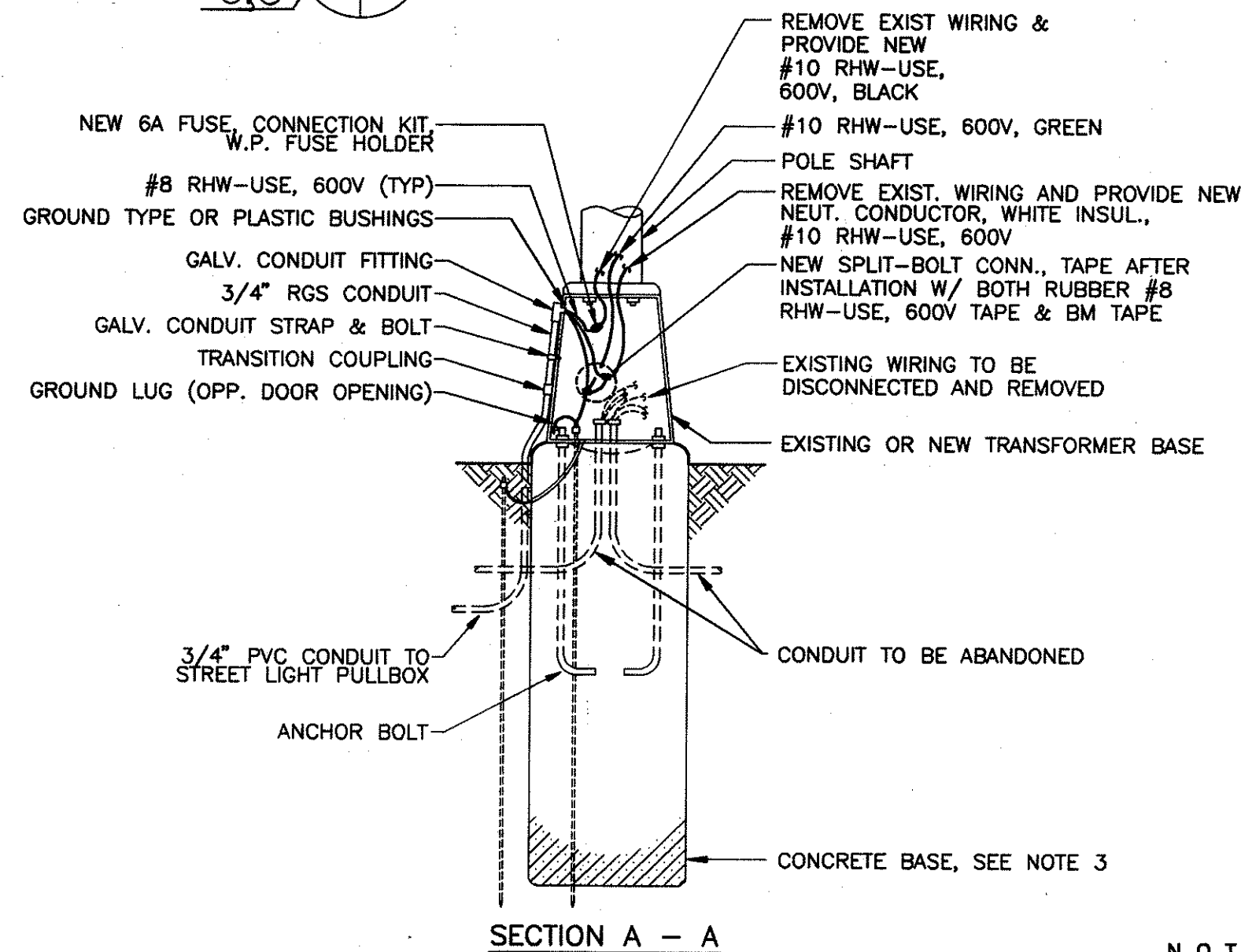
HIGHWAY LIGHTING IMPROVEMENTS AND REHABILITATION  
ALA MOANA BOULEVARD  
KEAME STREET TO ALA WAI CANAL

SHEET NO. 9 OF 11 SHEETS

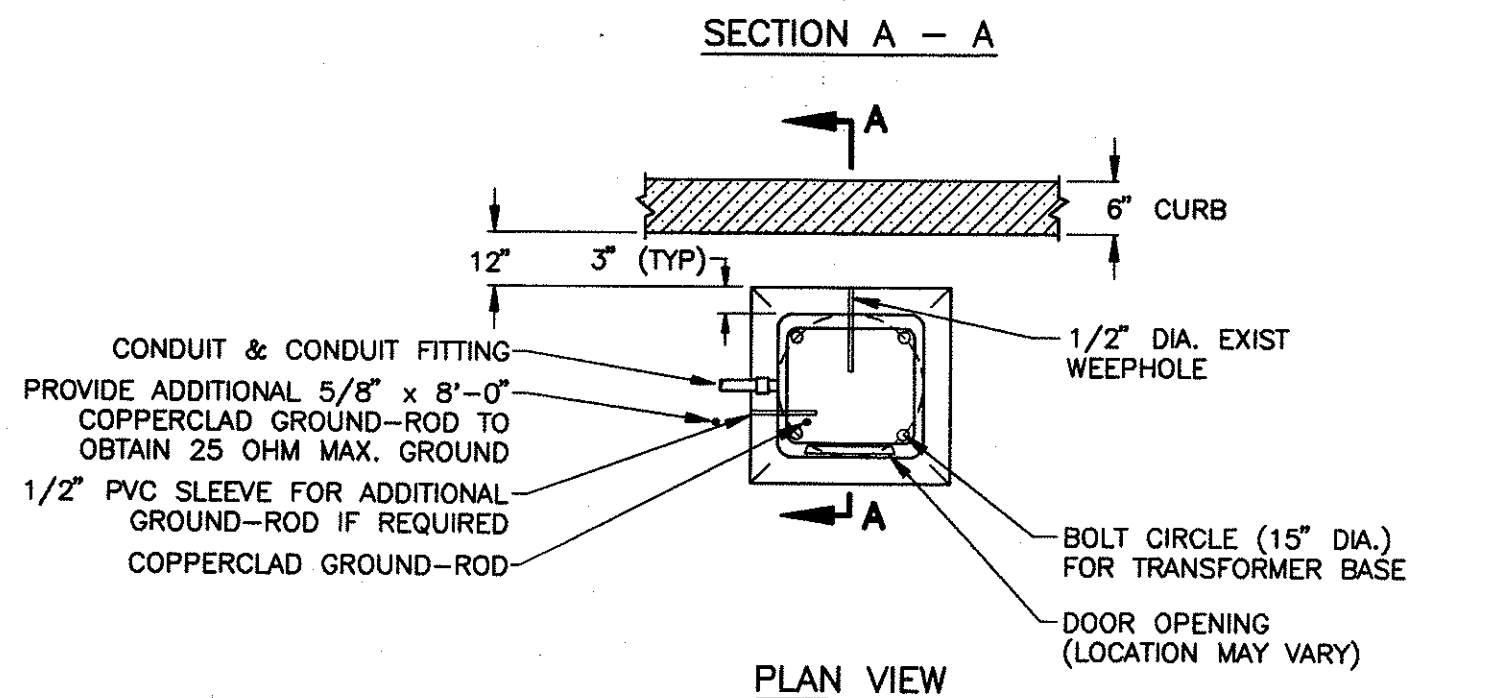
FED. ROAD DIST. NO.	STATE	FED. AID PROJ. NO.	FISCAL YEAR	SHEET NO.	TOTAL SHEETS
HAWAII	HAW.	NH-092-1(21)	1994	10	11



1 SERVICE EQUIPMENT ENCLOSURE DETAIL  
5.3 1/10



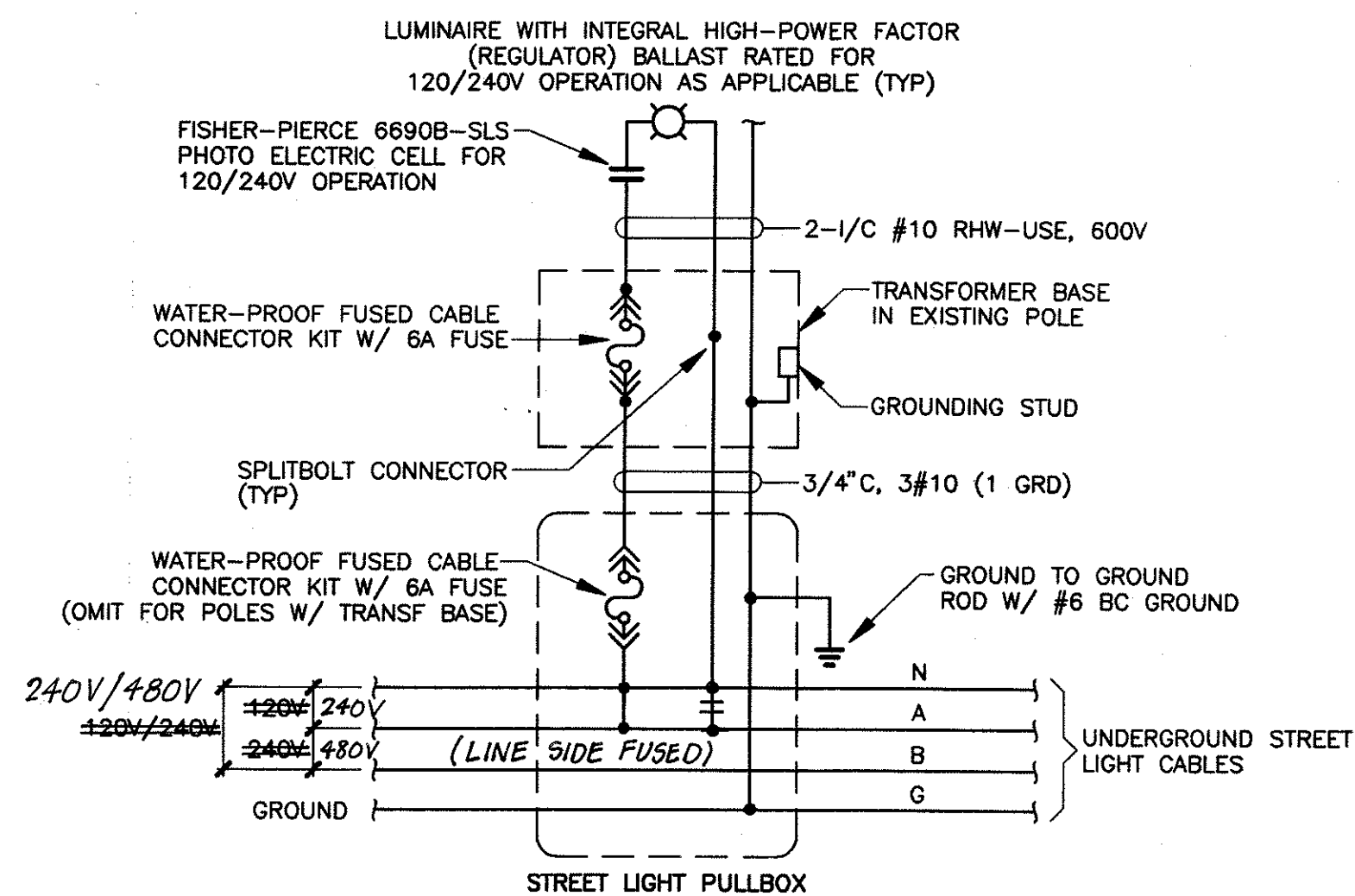
2 ENCLOSURE DETAIL  
10/10 N.T.S.



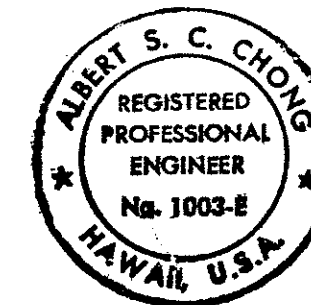
3 EXISTING POLE BASE DETAIL  
2/10 NOT TO SCALE

#### NOTES

- ALL EQUIPMENT AND WIRING IS NEW UNLESS OTHERWISE NOTED.
- DIP GROUT-FINISH 1" / FT. TOWARD CENTER OF TOP OF BASE.
- CONCRETE MIXTURE FOR FOUNDATION TO HAVE MINIMUM COMPRESSIVE STRENGTH OF TWENTY-FIVE HUNDRED (2,500) P.S.I. AT TWENTY-EIGHT (28) DAYS (CLASS "B").
- GROUND-ROD HEIGHT TO BE SIX INCHES (6") ABOVE CONCRETE BASE FOR TRANSFORMER BASE.
- SEAL CONDUITS WITH DUCT SEAL AFTER INSTALLATION OF STREET LIGHT CABLES.
- PROVIDE TWENTY-FOUR INCH (24") SLACK WIRES IN BASE.



4 TYPICAL CONNECTION DIAGRAM FOR STREET LIGHTING  
7/10 NOT TO SCALE



THIS WORK WAS PREPARED BY ME  
OR UNDER MY SUPERVISION

STATE OF HAWAII  
DEPARTMENT OF TRANSPORTATION  
HIGHWAYS DIVISION  
MISCELLANEOUS DETAILS

HIGHWAY LIGHTING IMPROVEMENTS AND REHABILITATION  
ALA MOANA BOULEVARD  
KEANE STREET TO ALA WAI CANAL

SHEET No. 10 OF 11 SHEETS



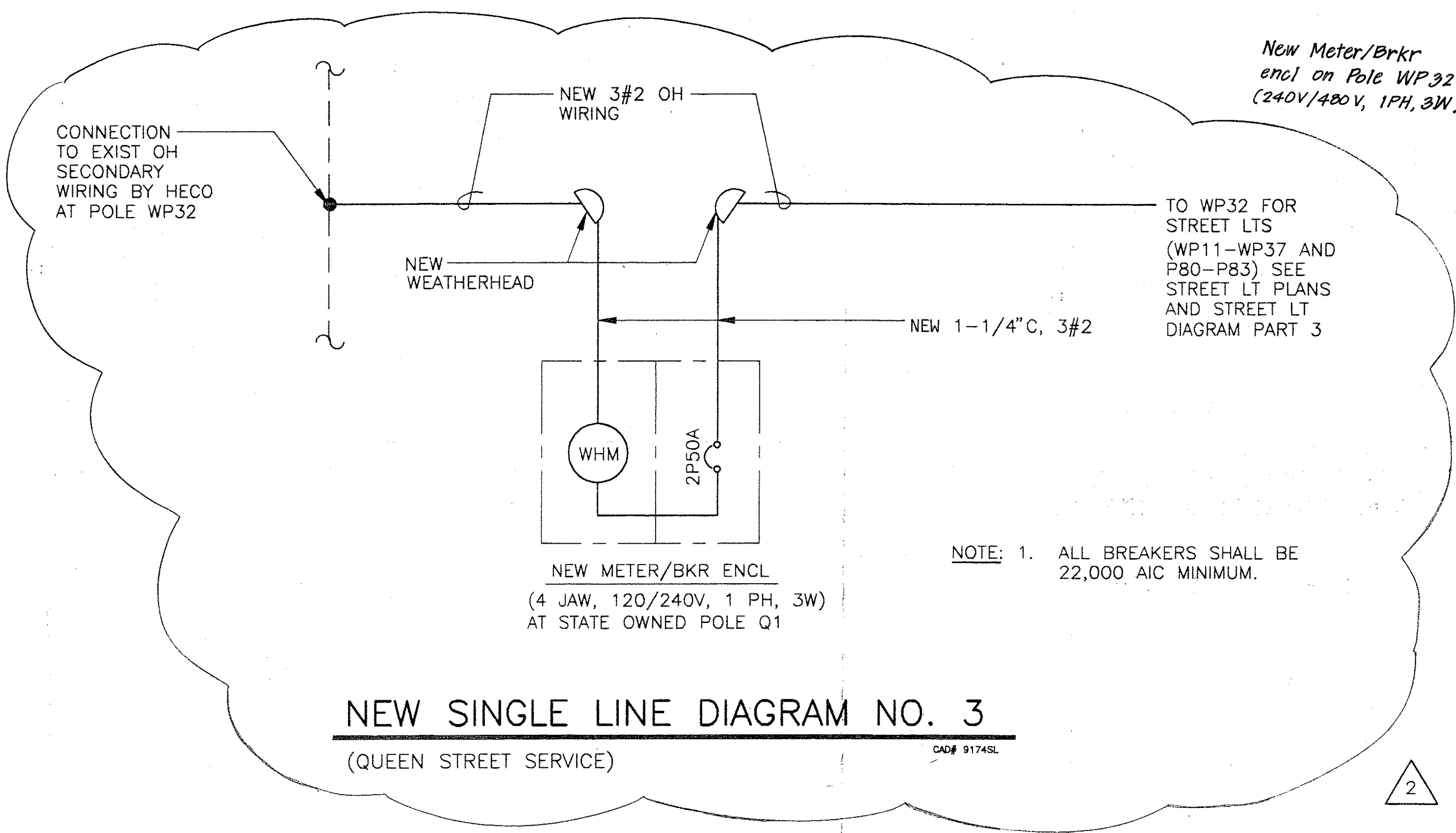
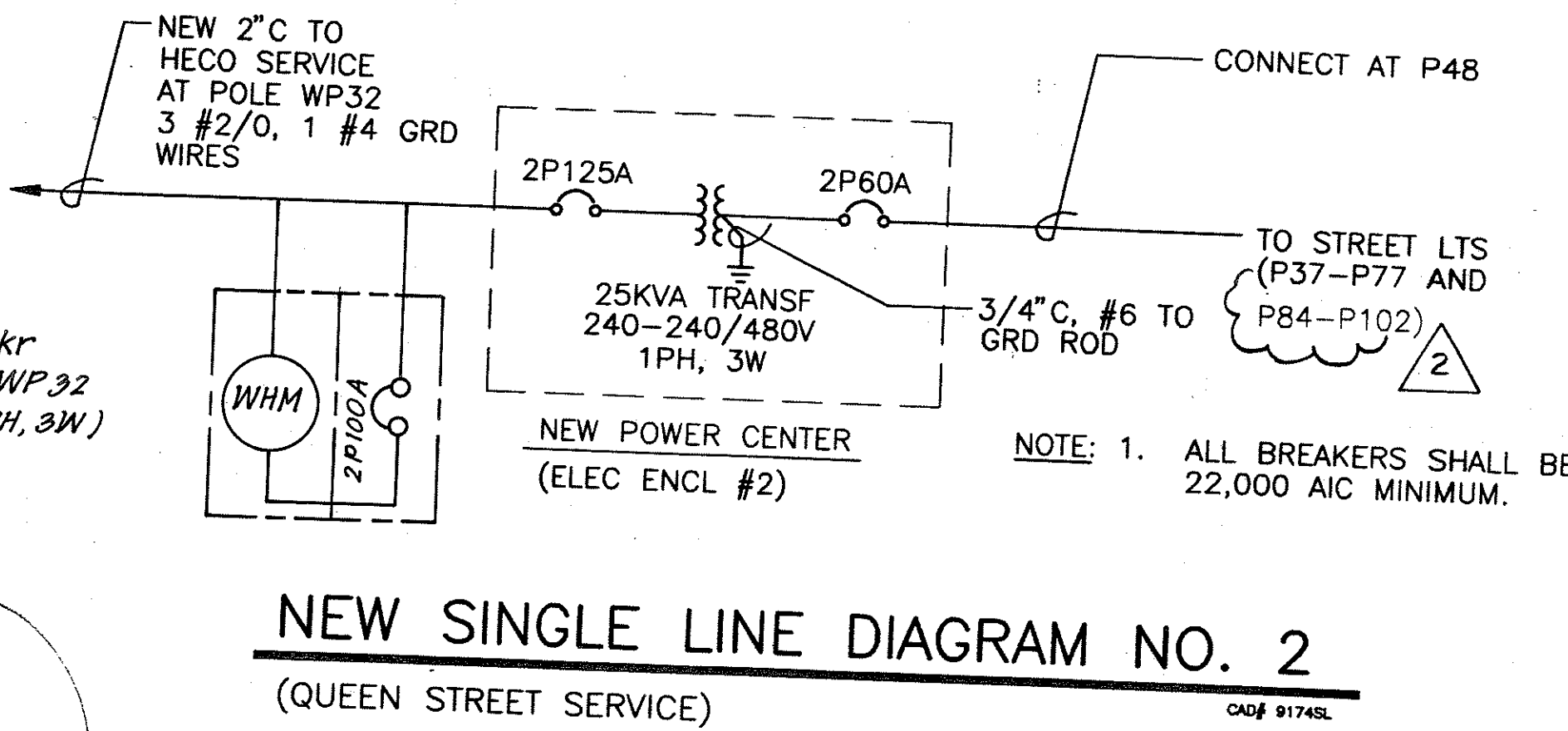
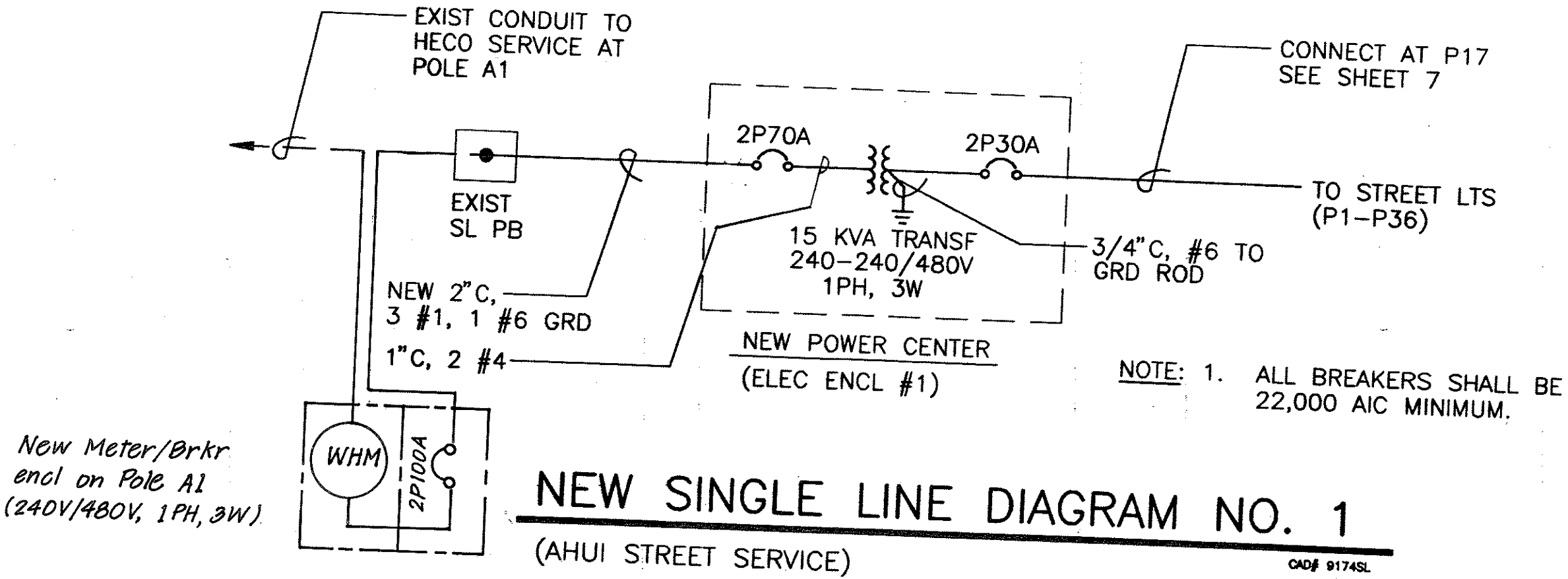
FED. ROAD DIST. NO.	STATE	FED. AID PROJ. NO.	FISCAL YEAR	SHEET NO.	TOTAL SHEETS
HAWAII	HAW.	NH-092-1(21)	1994	11	11

STATE RIGHT-OF-WAY CONSTRUCTION NOTES :

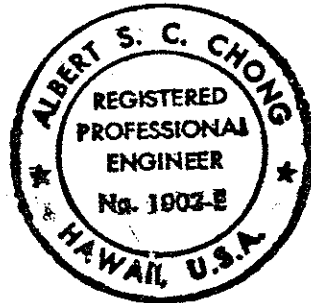
- CONSTRUCTION AND RESTORATION OF ALL EXISTING HIGHWAY FACILITIES WITHIN STATE RIGHT-OF-WAY SHALL BE DONE IN ACCORDANCE WITH ALL APPLICABLE SECTIONS OF THE "STANDARD SPECIFICATIONS FOR ROAD AND BRIDGE CONSTRUCTION" (DATED 1985), AND THE "SPECIFICATIONS FOR INSTALLATION OF MISCELLANEOUS IMPROVEMENTS WITHIN STATE HIGHWAYS" (DATED MAY 1, 1984) OF THE STATE OF HIGHWAYS DIVISION.
- ALL LANES SHALL BE OPEN TO TRAFFIC DURING THE MORNING PEAK HOURS FROM 6:00 a.m. TO 8:30 a.m., DURING THE AFTERNOON PEAK HOURS FROM 3:00 p.m. TO 6:00 p.m., AND DURING OFF-WORK HOURS. ONE LANE SHALL BE OPEN AT ALL TIMES.
- THE CONTRACTOR SHALL PROVIDE, INSTALL, AND MAINTAIN ALL NECESSARY SIGNS, LIGHTS, FLARES, BARRICADES, MARKERS, CONES, OR OTHER PROTECTIVE FACILITIES, AND SHALL TAKE ALL NECESSARY PRECAUTIONS FOR THE PROTECTION, CONVENIENCE, AND SAFETY OF PUBLIC TRAFFIC. ALL SUCH PROTECTIVE FACILITIES AND PRECAUTIONS TO BE TAKEN SHALL CONFORM WITH THE "ADMINISTRATIVE RULES OF HAWAII GOVERNING THE USE OF TRAFFIC CONTROL DEVICES AT WORK-SITES ON OR ADJACENT TO PUBLIC STREETS AND HIGHWAYS" AS ADOPTED BY THE HIGHWAY SAFETY COORDINATOR AND THE U.S. FEDERAL HIGHWAY ADMINISTRATION'S "MANUAL ON UNIFORM TRAFFIC CONTROL DEVICES FOR STREETS AND HIGHWAYS, PART VI - TRAFFIC CONTROLS FOR HIGHWAY CONSTRUCTION AND MAINTENANCE OPERATIONS". IF LANE CLOSURES ARE REQUIRED DURING CONSTRUCTION, A TRAFFIC CONTROL PLAN SHALL BE INCORPORATED INTO THE CONSTRUCTION PLANS, AND MUST BE APPROVED BY THE ENGINEER PRIOR TO THE ISSUANCE OF THE PERMIT.
- LONGITUDINAL DRAINAGE ALONG THE HIGHWAY SHALL BE MAINTAINED.
- ALL SIGNS AND PAVEMENT MARKINGS REMOVED BY THE CONTRACTOR SHALL BE REPLACED. PAVEMENT STRIPPINGS SHALL BE DONE BY THE CONTRACTOR.
- ALL SIGNS (REGULATORY, GUIDE, CONSTRUCTION, ETC.) AND BARRICADES SHALL BE OF HIGH-REFLECTIVITY SHEETING.
- NO MATERIAL AND/OR EQUIPMENT SHALL BE STOCKPILED OR OTHERWISE STORED WITHIN HIGHWAY RIGHT-OF-WAYS, EXCEPT AT LOCATIONS DESIGNATED IN WRITING AND APPROVED BY THE ENGINEER.
- THE MINIMUM PAVEMENT STRUCTURE SHALL CONSIST OF :  
2-1/2" ASPHALT CONCRETE, 7-1/2" AGGREGATE BASE COURSE, AND A 21" AGGREGATE SUB-BASE FOR THE SHOULDER;  
2-1/2" ASPHALT CONCRETE, 7-1/2" ASPHALT TREATED BASE COURSE, AND A 21" AGGREGATE SUB-BASE FOR THE TRAVELLED LANES;  
OR MATCH EXISTING PAVEMENT STRUCTURE, WHICHEVER IS GREATER.
- THE CONTRACTOR SHALL NOTIFY M.T.I. INCORPORATED - TWO (2) WEEKS PRIOR TO CONSTRUCTION - OF THE LOCATION, SCOPE OF WORK, PROPOSED CLOSURE OF ANY STREET OR TRAFFIC LANES, AND THE NEED TO RELOCATE ANY BUS-STOP.

TRAFFIC CONTROL NOTES :

- THE CONTRACTOR SHALL MAKE MINOR ADJUSTMENTS (AT INTERSECTIONS, DRIVEWAYS, BRIDGES, STRUCTURES, ETC.) TO FIT FIELD CONDITIONS.
- CONES OR DELINEATORS SHALL BE EXTENDED TO A POINT WHERE THEY ARE VISIBLE TO APPROACHING TRAFFIC.
- TRAFFIC CONTROL DEVICES SHALL BE INSTALLED SUCH THAT THE SIGN OR DEVICE FARTHEST FROM THE WORK AREA SHALL BE PLACED FIRST. THE OTHERS SHALL THEN BE PLACED PROGRESSIVELY TOWARD THE WORK AREA.
- REGULATORY AND WARNING SIGNS WITHIN THE CONSTRUCTION ZONE, THAT ARE IN CONFLICT WITH THE TRAFFIC CONTROL PLANS, SHALL BE REMOVED OR COVERED. ALL SIGNS SHALL BE RESTORED UPON COMPLETION OF THE WORK.
- FLAGGERS AND/OR POLICE OFFICERS SHALL BE IN SIGHT OF EACH OTHER OR IN DIRECT COMMUNICATION AT ALL TIMES.
- ALL TRAFFIC LANES SHALL BE A MINIMUM OF TEN FEET (10') WIDE.
- ALL CONSTRUCTION WARNING SIGNS SHALL BE PROMPTLY REMOVED OR COVERED WHENEVER THE MESSAGE IS NOT APPLICABLE OR NOT IN USE.
- THE BACKS OF ALL SIGNS USED FOR TRAFFIC CONTROL SHALL BE APPROPRIATELY COVERED TO PRECLUDE THE DISPLAY OF IN-APPLICABLE SIGN MESSAGES (I.E., WHEN SIGNS HAVE MESSAGES ON BOTH SIDES).
- AT THE END OF EACH DAY'S WORK OR AS SOON AS THE WORK IS COMPLETED, THE CONTRACTOR SHALL REMOVE ALL TRAFFIC CONTROL DEVICES NO LONGER NEEDED, TO PERMIT FREE AND SAFE PASSAGE OF PUBLIC TRAFFIC. REMOVAL SHALL BE IN THE REVERSE ORDER OF INSTALLATION.
- REPLACE PERMANENT PAVEMENT MARKINGS AND TRAFFIC SIGNS UPON COMPLETION OF EACH PHASE OF WORK.
- CONTRACTOR SHALL PROVIDE RAMPS FOR WHEEL-CHAIR TRAFFIC.



5/23/95	2	ADDED SINGLE LINE DIAGRAM NO. 3
DATE	SYM	DESCRIPTION



THIS WORK WAS PREPARED BY ME OR UNDER MY SUPERVISION

*Albert S. C. Chong*

STATE OF HAWAII  
DEPARTMENT OF TRANSPORTATION  
HIGHWAYS DIVISION  
GENERAL NOTES AND SINGLE LINE DIAGRAMS

HIGHWAY LIGHTING IMPROVEMENTS AND REHABILITATION  
ALA MOANA BOULEVARD  
KEAKE STREET TO ALA WAI CANAL

SHEET No. 11 OF 11 SHEETS

ORIGINAL PLAN	SURVEY PLOTTED BY	DATE
NOTE BOOK	DRAWN BY	
	DESIGNED BY	
	QUANTITIES BY	
	CHECKED BY	