

FED. ROAD DIST. NO.	STATE	FED. AID PROJ. NO.	FISCAL YEAR	SHEET NO.	TOTAL SHEETS
HAWAII	HAW.	NH-092-1(23)	1996	11	14

TRAFFIC SIGNAL NOTES

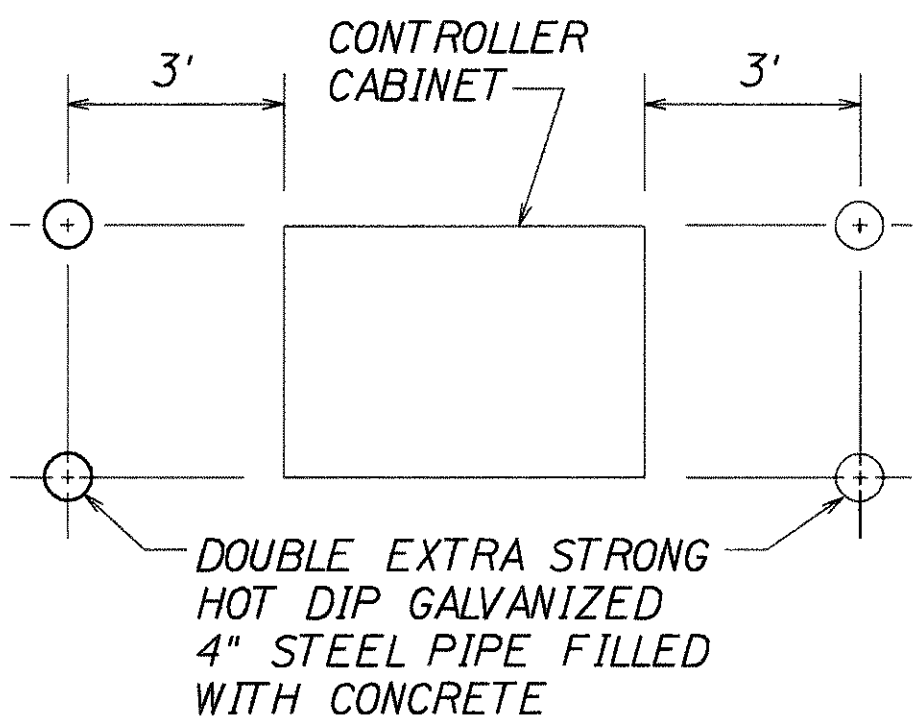
1. The locations of the traffic signal standards, traffic signal standards with mast-arm, pedestrian push buttons, traffic controller, pullboxes, conduits and loop detectors shall be staked out in the field by the Contractor and approval of the locations shall be obtained from the Engineer prior to construction and installation.
2. All traffic signal controller equipment shall be completely wired in the cabinet and shall control the traffic signals as called for in the plans.
3. All splicing shall be done in the pullboxes.
4. Furnishing and installing controller barriers, and conduit stubouts (pullboxes to edge of pavement) will not be paid for separately but shall be considered incidental to the various contract items
5. The Contractor shall notify the Traffic Signal Branch, Department of Transportation Services, City & County of Honolulu (Phone 527-5004), 2 weeks prior to commencing any work on the traffic signal system.
6. Department of Transportation Services, City & County of Honolulu, will assist the Engineer in construction inspection for the traffic signal system.
7. A solid #8 bare copper wire shall be pulled with the traffic signal control cable for equipment ground. Cost shall be incidental to the installation of the control cable.
8. The cost of installing four pipe guards around the new Traffic Controller shall not be paid for separately but considered incidental to the various Traffic Signal items.
9. All existing Pull Boxes, Traffic Signal Poles and Controller Bases not incorporated into the new Traffic Signal System shall be removed to 6 inches below grade.
10. Existing Loop Detectors and conduits not incorporated into the new Traffic Signal System shall be abandoned in place. Abandoned conduits shall be plugged with concrete. Remove unused existing cables.
11. Existing Traffic Signal Poles, Mast Arms, Signal Heads, Pedestrian Push Buttons with Signs, and Controllers which are removed and not incorporated into the new Traffic Signal System shall be disposed of or salvaged as determined by the Engineer. Salvable materials shall be delivered to C&C of Honolulu, DTS, Traffic Signals Section, 160 Koula St., Honolulu, Hawaii. Cost shall be incidental to the various Traffic Signal items.
12. The Traffic Signals shall be kept operational during construction. Any relocation required shall be approved by the Electrical and Maintenance Services Division, Department of Transportation Services, and paid for by the contractor.
13. The contractor shall be responsible for any damages to existing Traffic Signal Facilities, including the Traffic Signal Interconnect System. Any damages to these facilities shall be repaired by the contractor at his cost in accordance with the requirements of the City and County of Honolulu.
14. Existing Pullboxes, Conduits Cables and Pipe Barriers which are removed and not incorporated into the new Traffic Signal System shall be disposed of as directed by the Engineer. Removal and disposal shall be considered incidental to the various Traffic Signal items.

TRAFFIC SIGNAL LEGEND

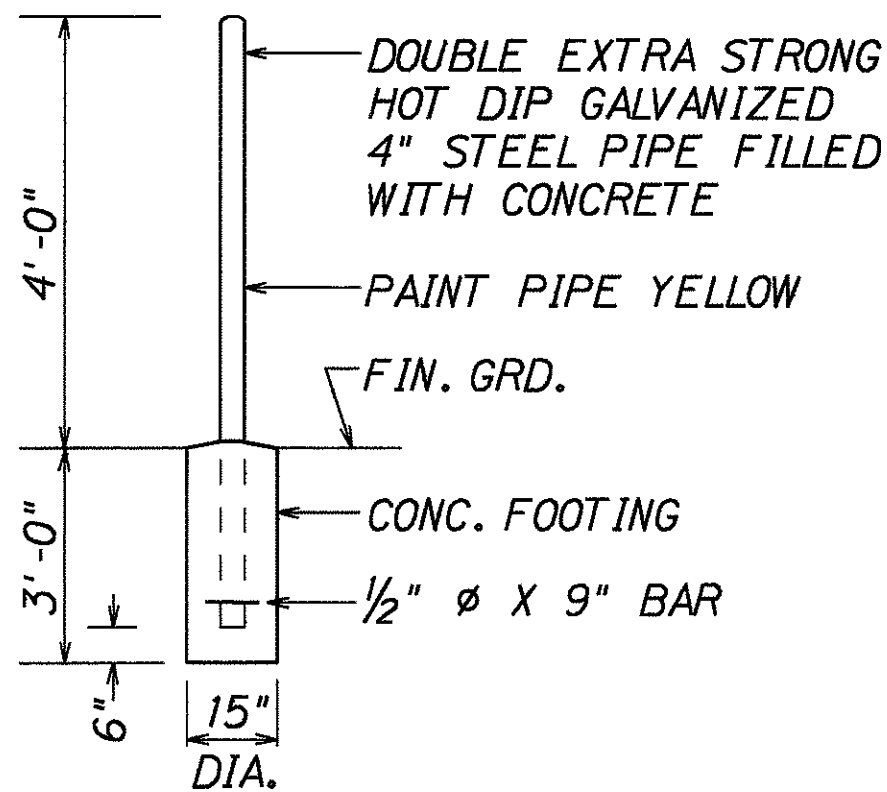
	New Traffic Signal Controller
	Existing Traffic Signal Controller
	New Traffic Signal Conduits and Cables
	Existing Traffic Signal Conduits and Cables
	New 12" RYG Traffic Signal Head
	Existing 12" RYG Traffic Signal Head
	New 12" RYU Traffic Signal Head
	New 12" RYU Traffic Signal Head
	New 12" RYU Traffic Signal Head
	New 12" RYU Traffic Signal Head
	New Type II Traffic Signal Standard w/Mast Arm and Traffic Signal Heads
	Existing Type II Traffic Signal Standard w/Mast Arm and Traffic Signal Heads
	New Pedestrian Signal Head
	Existing Pedestrian Signal Head
	New Type A Pullbox
	Existing Type A Pullbox
	New Type B Pullbox (Traffic Signal)
	Existing Type B Pullbox
	New Loop Detector
	Existing Loop Detector
	New Pipe Barrier
	Existing Pipe Barrier

NOTE:

COST OF CONC. FILLED GALVANIZED POSTS SHALL BE INCIDENTAL TO CONTROLLER ASSEMBLY



PLAN



TYP. ELEVATION

PIPE BARRIER DETAIL

Not to Scale

DESIGNED BY	DATE
DRAWN BY	10/94
CHECKED BY	
NOTED BY	
QUANTITIES BY	
IN CHARGE	

STATE OF HAWAII DEPARTMENT OF TRANSPORTATION HIGHWAYS DIVISION <b>TRAFFIC SIGNAL &amp; HWY. LIGHTING</b> <b>LEGEND, DETAILS &amp; NOTES</b> <b>ALA MOANA BOULEVARD</b> <b>Install Double Right-Turn Lanes</b> <b>On Punchbowl Street</b> <b>F.A. PROJECT NO. NH-092-1(23)</b> Scale: Not to Scale Date: Sept., 1995 SHEET No. 11 OF 6 SHEETS
--