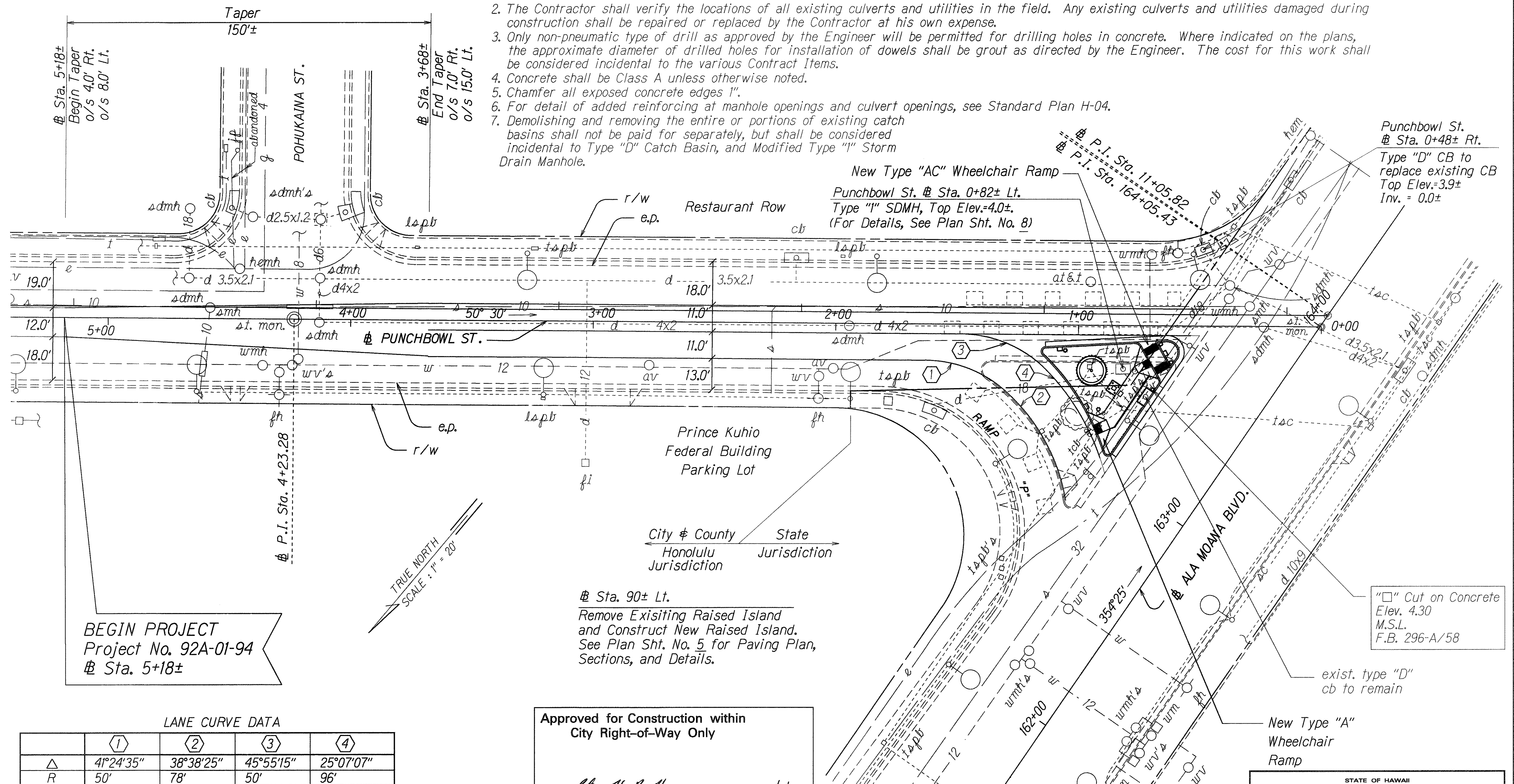


FED. ROAD DIST. NO.	STATE	FED. AID PROJ. NO.	FISCAL YEAR	SHEET NO.	TOTAL SHEETS
HAWAII	HAW.	NH-092-1(23)	1995	7	14

GENERAL NOTES:

- Existing drainage systems will be functional at all times during construction. The Contractor is to furnish materials, equipment, labor, tools and incidentals necessary to maintain flow. The cost for this work shall be incidental to the various Contract Items.
- The Contractor shall verify the locations of all existing culverts and utilities in the field. Any existing culverts and utilities damaged during construction shall be repaired or replaced by the Contractor at his own expense.
- Only non-pneumatic type of drill as approved by the Engineer will be permitted for drilling holes in concrete. Where indicated on the plans, the approximate diameter of drilled holes for installation of dowels shall be grout as directed by the Engineer. The cost for this work shall be considered incidental to the various Contract Items.
- Concrete shall be Class A unless otherwise noted.
- Chamfer all exposed concrete edges 1".
- For detail of added reinforcing at manhole openings and culvert openings, see Standard Plan H-04.
- Demolishing and removing the entire or portions of existing catch basins shall not be paid for separately, but shall be considered incidental to Type "D" Catch Basin, and Modified Type "I" Storm Drain Manhole.



ORIGINAL PLAN	DATE
DESIGNED BY	10/25/95
TRACED BY	
NOTE BOOK	
DESIGNED BY	
QUANTITIES BY	
CHECKED BY	
NE	