

FED. ROAD DIST. NO.	STATE	PROJ. NO.	FISCAL YEAR	SHEET NO.	TOTAL SHEETS
HAWAII	HAW.	92A-02-90	1992	3	8

LEGEND

	EXISTING TYPE I TRAFFIC SIGNAL STANDARD.
	EXISTING MAST ARM TRAFFIC SIGNAL STANDARD.
	EXISTING R Y G TRAFFIC SIGNAL HEAD.
	EXISTING R Y↑ TRAFFIC SIGNAL HEAD.
	EXISTING PEDESTRAIN SIGNAL HEAD.
	TS NEW TRAFFIC SIGNAL STANDARD
	NEW STANDARD TRAFFIC AND PEDESTRIAN SIGNAL HEADS MOUNTED ON TYPE I SIGNAL STANDARD, HEIGHT = 10'
	NEW R Y↑ TRAFFIC SIGNAL HEAD.
	NEW R Y← PROGRAMMABLE TRAFFIC SIGNAL HEAD.
	EXISTING CONTROLLER CABINET
	EXISTING PULLBOX
	NEW TYPE "B" PULLBOX
	LOOP DETECTOR, SERIES-PARALLEL CONNECTED
	LOOP DETECTOR, SERIES CONNECTED
	SL LIGHT POLE
	PP POWER POLE
	WV WATER VALVE
	WM WATER METER
	SMH SEWER MANHOLE
	EXISTING MARKINGS
	NEW MARKINGS
	EXISTING UTILITY LINES AND SIZES AS INDICATED
	W = WATER
	S = SEWER
	D = STORM DRAIN
	G = GAS
	SL = STREET LIGHT
	TS = TRAFFIC SIGNAL
	SPR = SPRINKLER
	FO = FUEL OIL

TRAFFIC SIGNAL NOTES

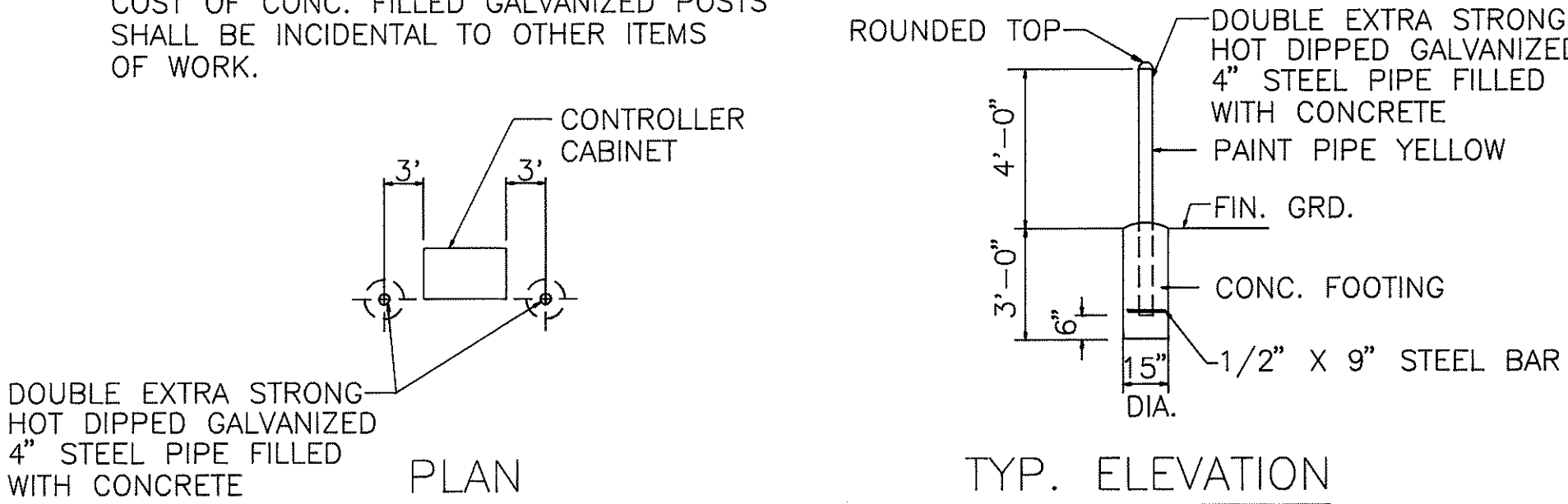
- ALL TRAFFIC SIGNAL CONTROLLER EQUIPMENT SHALL BE COMPLETELY WIRED IN THE CABINET AND SHALL CONTROL THE TRAFFIC SIGNALS AS CALLED FOR IN THE PLANS.
- SIGNAL INDICATIONS DURING CLEARANCE INTERVAL:
  - IF A SIGNAL IS G OR ~~G~~ AND WILL REMAIN G OR ~~G~~ DURING THE NEXT PHASE, IT SHALL BE G OR ~~G~~ DURING THE CLEARANCE INTERVAL.
  - IF A SIGNAL IS G OR ~~G~~ AND WILL BECOME R OR EXTINGUISHED DURING THE NEXT PHASE, IT SHALL BE Y OR ~~Y~~ DURING THE CLEARANCE INTERVAL.
  - IF A SIGNAL IS R AND WILL REMAIN R OR BECOMES G DURING THE NEXT PHASE, IT SHALL REMAIN R DURING THE CLEARANCE INTERVAL.
- A SOLID #8 BARE COPPER WIRE SHALL BE PULLED WITH THE TRAFFIC CONTROL CABLE FOR EQUIPMENT GROUND. COST SHALL BE INCIDENTAL TO THE INSTALLATION OF THE CONTROL CABLE.
- THE LOOP AMPLIFIER UNITS FURNISHED FOR THIS PROJECT SHALL BE CAPABLE OF OPERATING THE LOOP DETECTOR CONFIGURATIONS SHOWN ON THE PLANS.
- DETECTOR ASSIGNMENT SHALL BE PER CALIFORNIA DEPARTMENT OF TRANSPORTATION "TRAFFIC SIGNAL CONTROL LOCAL INTERSECTION PROGRAM," JULY 1978.
- THE CONTRACTOR SHALL NOTIFY THE ELECTRICAL AND MAINTENANCE SERVICES DIVISION, DEPARTMENT OF TRANSPORTATION SERVICES, THREE (3) WORKING DAYS PRIOR TO COMMENCING WORK ON THE TRAFFIC SIGNAL SYSTEM (PHONE 527-5007).
- THE TRAFFIC SIGNALS SHALL BE KEPT OPERATIONAL DURING CONSTRUCTION. ANY RELOCATION REQUIRED SHALL BE APPROVED BY THE ELECTRICAL AND MAINTENANCE SERVICES DIVISION, DEPARTMENT OF TRANSPORTATION SERVICES, AND PAID FOR BY THE CONTRACTOR.
- THE CONTRACTOR SHALL BE RESPONSIBLE FOR ANY DAMAGES TO EXISTING TRAFFIC SIGNAL FACILITIES, INCLUDING THE TRAFFIC SIGNAL INTERCONNECT SYSTEM, AND ANY AND ALL DAMAGES TO THESE FACILITIES SHALL BE REPAIRED BY THE CONTRACTOR AT HIS COST IN ACCORDANCE WITH THE REQUIREMENTS OF THE CITY AND COUNTY OF HONOLULU.

CONSTRUCTION NOTES

- LOCATIONS OF EXISTING UNDERGROUND STRUCTURES AND UTILITIES SUCH AS PIPE-LINES, CONDUITS, CABLES, ETC., SHOWN ON PLANS ARE APPROXIMATE ONLY. IT IS NOT THE INTENT OF THESE PLANS TO SHOW THE EXACT LOCATION OF ALL UNDERGROUND UTILITIES AND STRUCTURES. IT IS THE RESPONSIBILITY OF THE CONTRACTOR TO VERIFY THE LOCATIONS OF ALL EXISTING UTILITIES WITH THE RESPECTIVE OWNERS. EXISTING UTILITIES DAMAGED BY THE CONTRACTOR SHALL BE REPAIRED BY THE CONTRACTOR AT HIS OWN COST.
- THE LOCATIONS OF THE TRAFFIC SIGNAL STANDARDS, TRAFFIC SIGNAL STANDARDS WITH MAST-ARM, PEDESTRIAN PUSH BUTTONS, TRAFFIC CONTROLLER, PULLBOXES, CONDUITS AND LOOP DETECTORS SHALL BE STAKED OUT IN THE FIELD BY THE CONTRACTOR AND APPROVAL OF THE LOCATIONS SHALL BE OBTAINED FROM THE ENGINEER PRIOR TO CONSTRUCTION AND INSTALLATION.
- ALL TRAFFIC SIGNAL WORK SHALL CONFORM TO THE REQUIREMENTS OF THE "MANUAL ON UNIFORM TRAFFIC CONTROL DEVICES FOR STREETS AND HIGHWAYS," FEDERAL HIGHWAY ADMINISTRATION (1984) AND AMENDMENTS.
- LOCATIONS OF TRAFFIC MARKINGS AND MARKERS (LANE LINES, STOP LINES, CROSS-WALK, ETC.) SHOWN ON THE PLANS SHALL BE VERIFIED WITH THE ENGINEER PRIOR TO THE INSTALLATION OF THE TRAFFIC SIGNAL SYSTEM.
- MAINTENANCE OF TRAFFIC THROUGH THE CONSTRUCTION AREA SHALL BE IN ACCORDANCE WITH PART VI OF THE "MANUAL ON UNIFORM TRAFFIC CONTROL DEVICES FOR STREETS AND HIGHWAYS," FEDERAL HIGHWAY ADMINISTRATION (1984) AND AS SPECIFIED IN THE SPECIAL PROVISIONS. THE CONTRACTOR SHALL FURNISH AND MAINTAIN ADEQUATE BARRICADES, BLINKERS, CONSTRUCTION SIGNS, ETC., FOR THE SAFETY OF THE MOTORING PUBLIC.
- DEPARTMENT OF TRANSPORTATION SERVICES, CITY AND COUNTY OF HONOLULU, WILL ASSIST THE ENGINEER IN CONSTRUCTION INSPECTION FOR THE TRAFFIC SIGNAL SYSTEM.
- WHERE REQUIRED BY THE PLANS, SIGNS AND/OR POSTS SHALL BE REMOVED. COSTS SHALL BE INCIDENTAL TO OTHER ITEMS OF WORK.

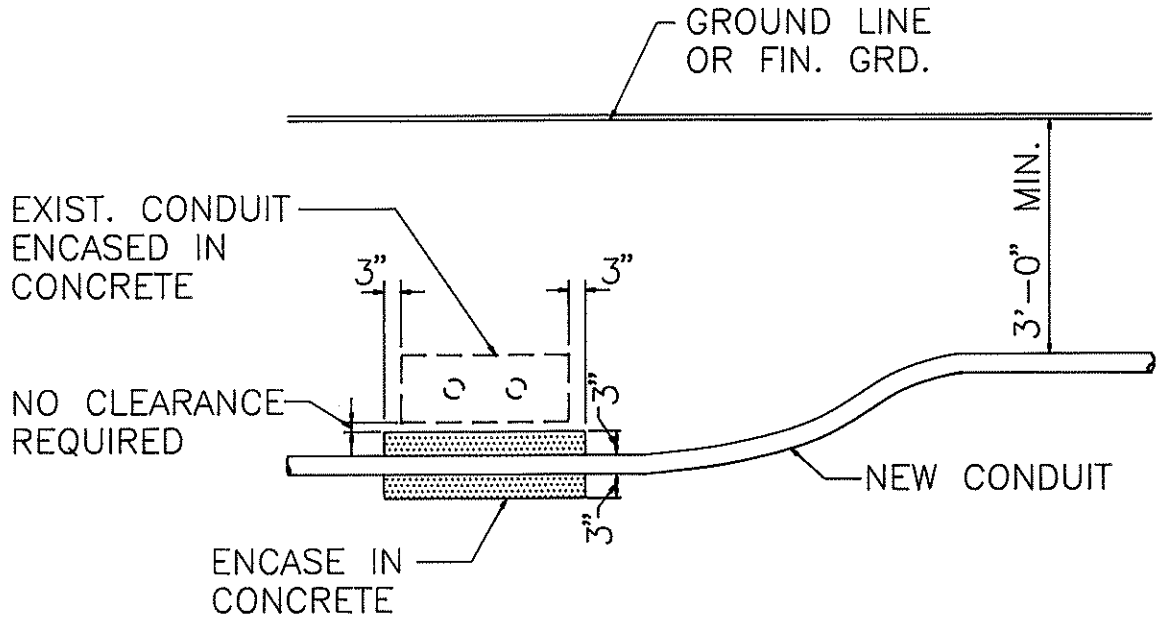
NOTE:

COST OF CONC. FILLED GALVANIZED POSTS SHALL BE INCIDENTAL TO OTHER ITEMS OF WORK.



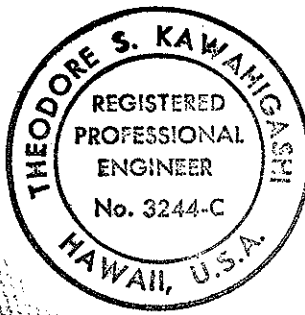
PIPE GUARD DETAIL

NOT TO SCALE



CONDUIT BY-PASS DETAIL

NOT TO SCALE



THIS WORK WAS PREPARED BY ME  
OR UNDER MY SUPERVISION  
*Theodore S. Kawahiga*  
Signature

STATE OF HAWAII DEPARTMENT OF TRANSPORTATION HIGHWAYS DIVISION
<b>LEGEND, NOTES AND DETAILS</b>
NIMITZ HIGHWAY TRAFFIC SIGNALS AT ALAKAWA STREET
PROJECT NO. 92A-02-90
SCALE: AS NOTED      DATE: APRIL 1992