

FED. ROAD DIST. NO.	STATE	FED. AID PROJ. NO.	FISCAL YEAR	SHEET NO.	TOTAL SHEETS
HAWAII	HAW.	DEA-01-86M	1986	2	5

GENERAL NOTES

REPAIR NOTES:

- Face of exist. concrete
- Provide min. 2" conc. cover over reinforcement or welded wire fabric. See specifications for welded wire fabric requirements.
- Reinforcing bars that have rusted more than 25% of their original cross sectional area shall be strengthened as shown on Repair Splice Detail this sheet.
- All cracks shall be repaired by applying expoxy under pressure. See General Notes.
- The Engineer shall determine all areas to be repaired & the limits of repair at each area.

INCIDENTAL ITEMS The following items shall be considered incidental to the various pay items of repairs & shall not be paid for separately.

- Expansion bolts & other miscellaneous hardware including hot-dipped galvanized and welded wire fabric.
- Cleaning of all exposed, corroded reinforcing steel to sound metal.
- Reinforcing bars of repair splice for strengthening corroded bars.
- Efflorescence shall be inspected and repaired as directed by the Engineer.

GENERAL:

- All reinforcing steel to be ASTM A615 Grade 40.
- All welding shall be done in accordance with the Reinforcing Steel Welding Code AWS D12.1.
- Maintenance & control of traffic - see Special Provisions sub-section 104.04 & sub-section 676.03(A).
- Repairs to the underside of slab shall be made in sections & sequences as indicated in note at left.
- The Contractor may use an equivalent material to Shotcrete or Hand-Placed mortar for repairs upon approval from the Engineer.
- The Contractor shall submit to the Engineer for approval the type of expoxy and the expoxy injection pressure of the specific expoxy to be used.

SYMBOLS & ABBREVIATIONS

- Exposed reinf. bars where occurs.
- S.S. - Surface spall (Concrete)
- S.C. - Surface crack (Concrete)
- H.C. - Hairline crack
- sq. ft. S.F. - Square feet
- L.F. - Linear feet

DATE REVISION

STATE OF HAWAII  
DEPARTMENT OF TRANSPORTATION  
HIGHWAYS DIVISION

TYPICAL DETAILS

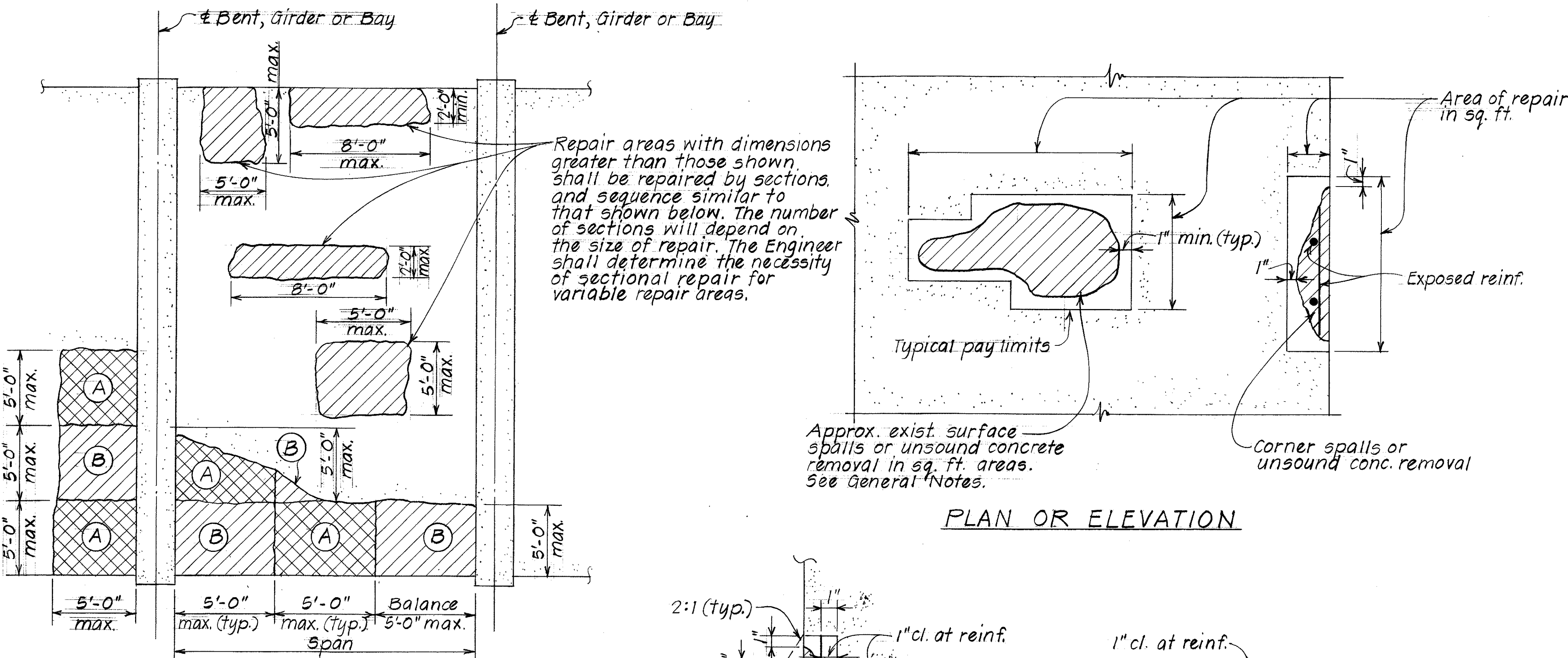
NIMITZ HIGHWAY SLIP COVERS

REPAIR SPALLED CONCRETE

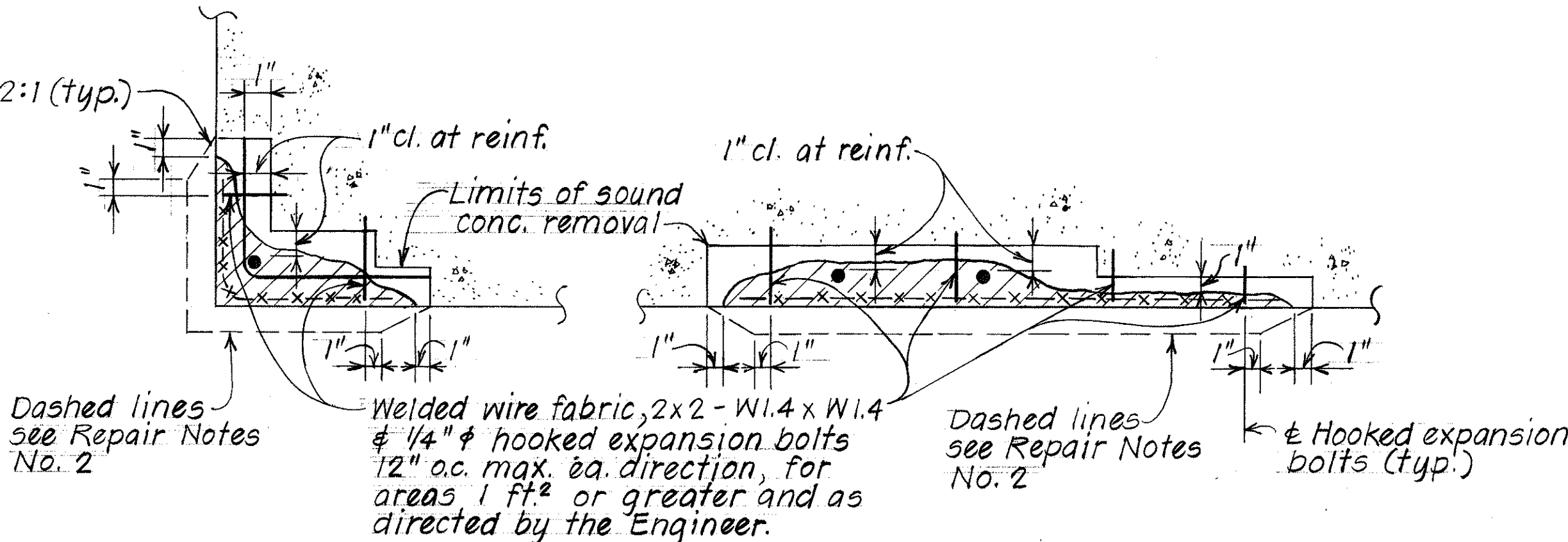
Proj. No. 02A-01-86M

Scale: As Shown Date: Sept. 1985

SHEET NO. 1 OF 4 SHEETS

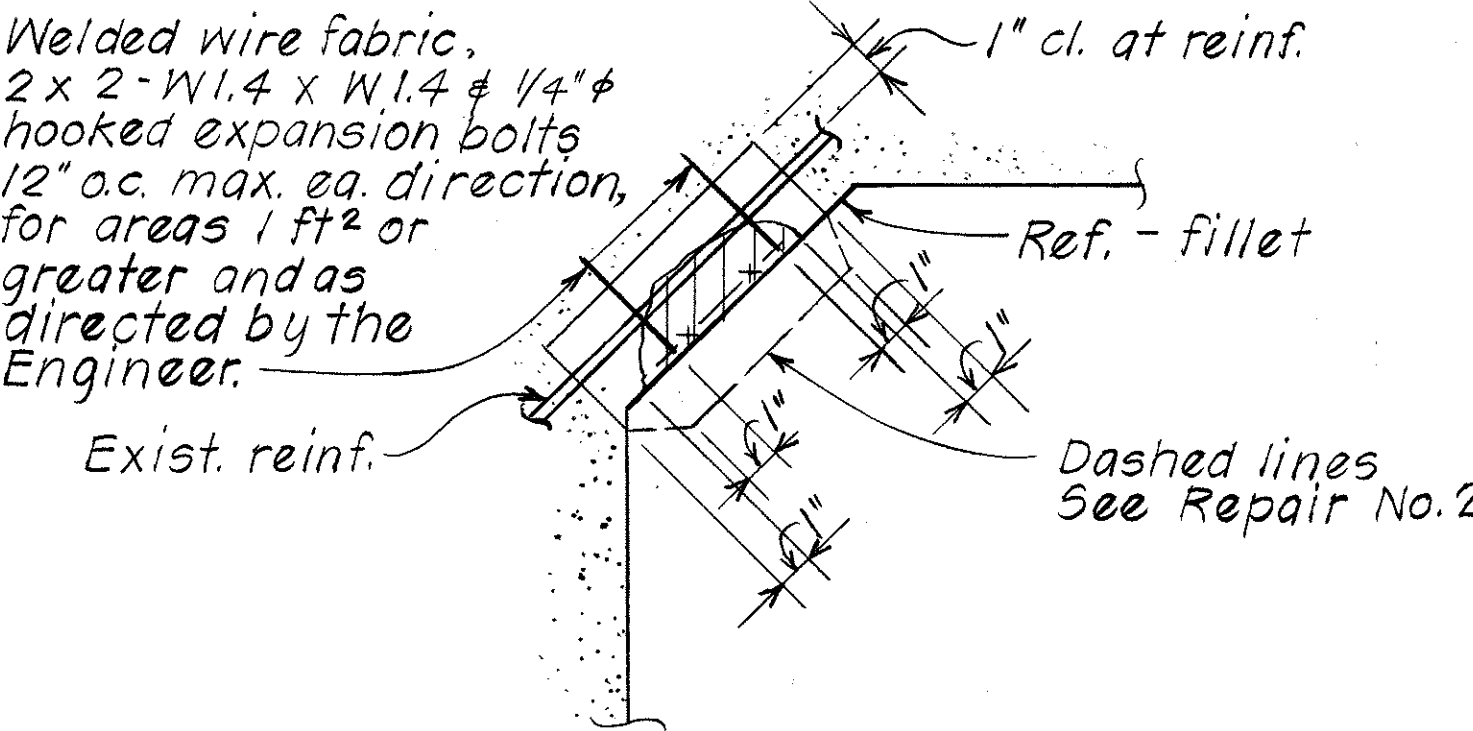


PLAN OR ELEVATION



AT CORNER

AT SURFACE



AT FILLET

TYPICAL SECTIONS

TYPICAL REPAIRS

AT CONCRETE SPALLS

Not to scale

REFLECTED SPAN CEILING PLAN

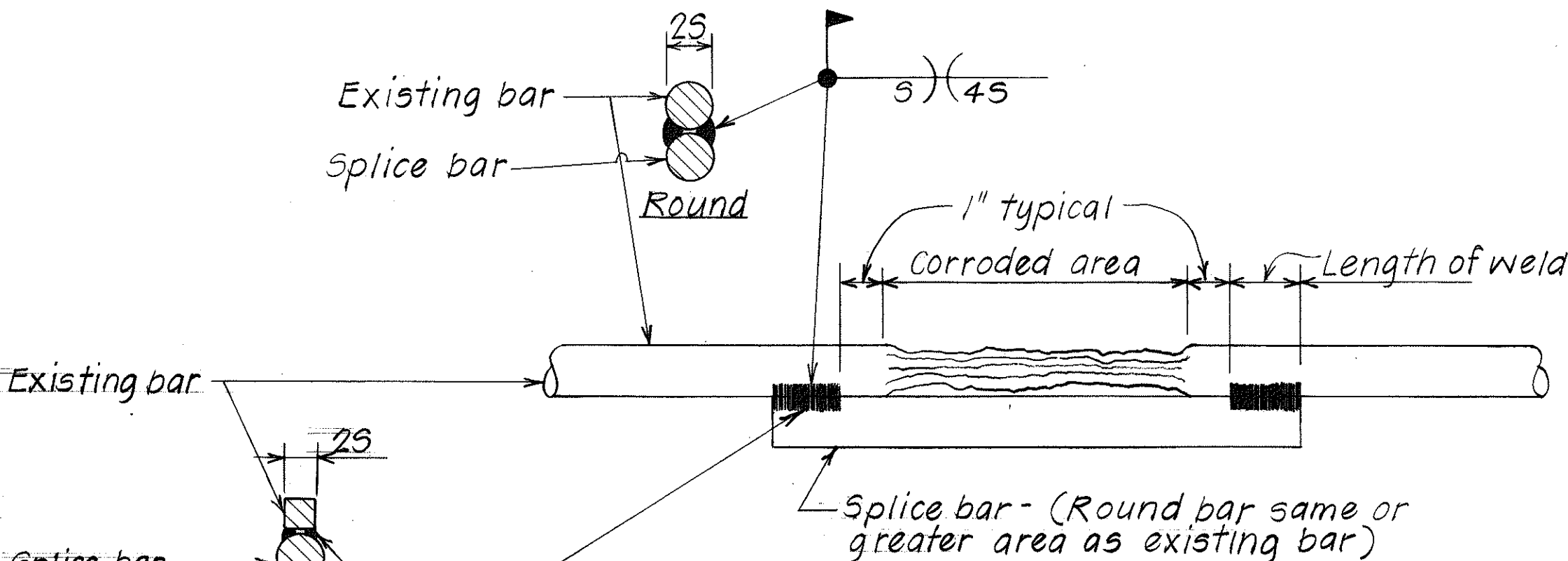
Not to Scale

NOTE 1

Slab damaged over a large area shall be repaired in sections (A) & (B) as shown. The sequence of repair for each section shall be as follows:

- Repair section (A).
- Start repair of section (B) 7 days after placing mortar for section (A).

The necessity for sectional repairs will depend on the amount of reinforcing bars that has to be exposed and cleaned. The Engineer shall determine the necessity for sectional repairs after portions of the steel have been exposed.



TYPICAL REINF. BAR REPAIR

SPLICE DETAIL

Not to Scale

SURVEY PLOTTED BY	DATE
DRAWN BY	
TRACED BY	
NOTE BOOK	
QUANTITIES BY	
CHECKED BY	
No.	