

FED. ROAD DIST. NO.	STATE	FED. AID PROJ. NO.	FISCAL YEAR	SHEET NO.	TOTAL SHEETS
HAWAII	HAW.	HES-092-1(17)	1985	10	22

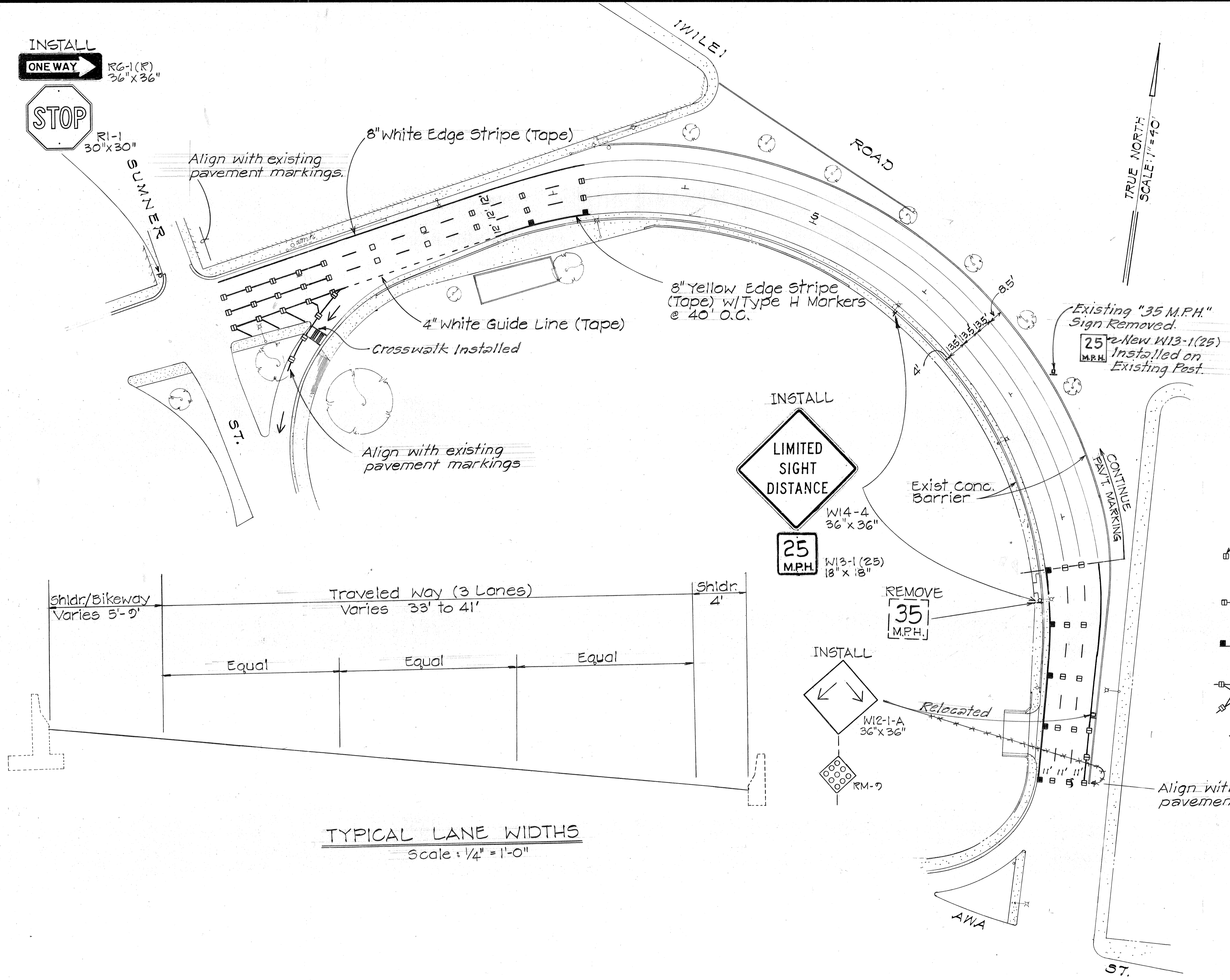
GENERAL NOTES

1. The final locations of all signs shall be approved by the Engineer.
2. Locations of all new pavement markings shall be staked out by the Contractor for approval by the Engineer prior to installation.

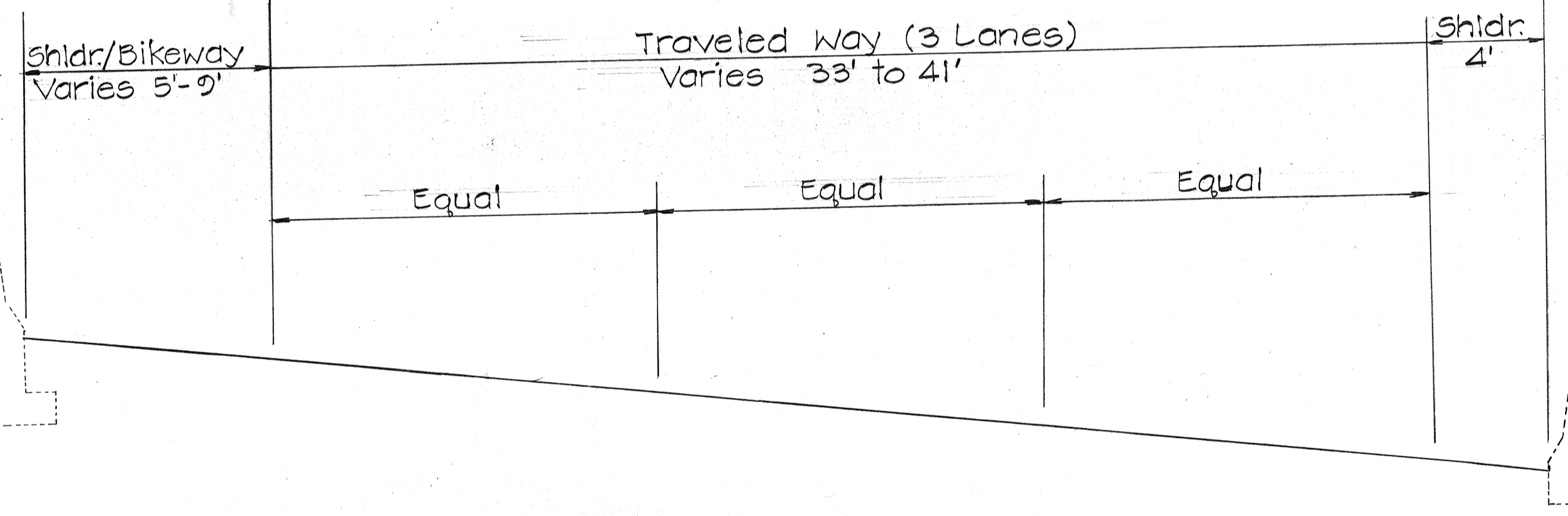
PAVEMENT MARKING SUMMARY	
DESCRIPTION	QUANTITY
Raised Pavement Marker:	
Type "A"	88 Ea.
Type "C"	65 Ea.
Type "H"	17 Ea.
4" Pavement Striping (Tape)	45 L.F.
8" Pavement Striping (Tape)	1970 L.F.
12" Pavement Striping (Tape)	55 L.F.
Pavement Arrow (Tape)	2 Ea.

LEGEND

- Type C
- 4 ea. Type "A" Raised Pavement Markers @ 40' O.C.
- 4 ea. Type "A" w/Type "C" Raised Pavement Markers @ 40' O.C.
- 8" white stripe (Tape) w/Type "C" Raised Pavement Markers @ 20' O.C.
- 8" Yellow stripe (Tape) w/Type "H" Raised Pavement Markers @ 40' O.C.
- Channelizing Island
- Pavement Arrow (Tape)



TRUE NORTH
SCALE: 1" = 40'



TYPICAL LANE WIDTHS
Scale: 1/4" = 1'-0"

DATE	
DESIGNED BY	
CHECKED BY	
NOTED BY	
QUANTITIES BY	
CHIEF ENGINEER	

STATE OF HAWAII
DEPARTMENT OF TRANSPORTATION
HIGHWAYS DIVISION

SIGNING & PAVEMENT MARKING PLAN

NIMITZ HIGHWAY SAFETY IMPROVEMENTS

Westbound Lanes at Iwilei

F.A. Project No. HES-092-1(17)

SCALE: 1" = 40' DATE: July, 1984

SHEET NO. / OF 22 SHEETS