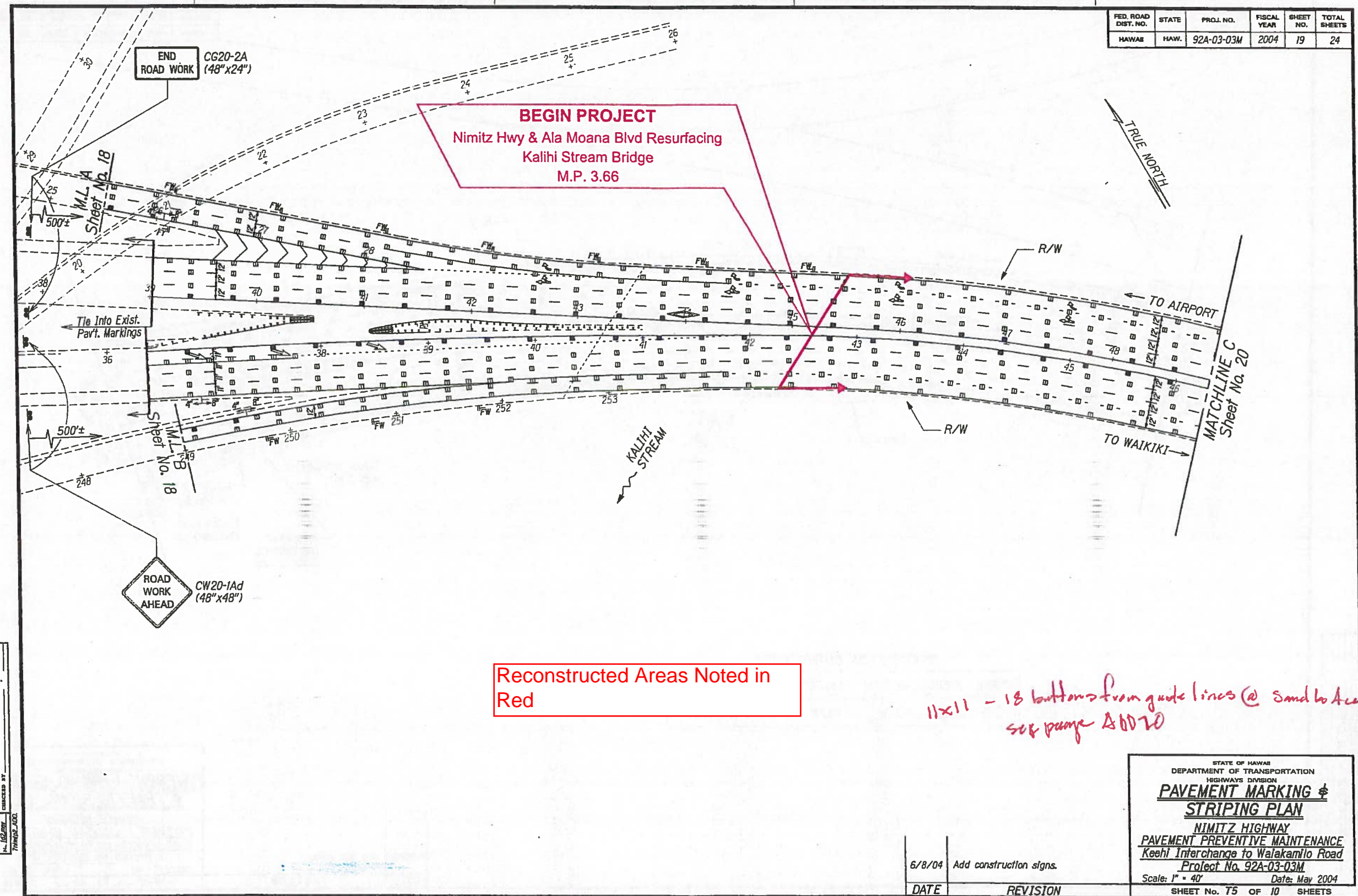


**Form C Attachment A-3**  
**Portions of Contract Plans**

2004 NIMITZ / AIRPORT PREVIOUS DESIGN

LUCKFIELD (7/27/2018)



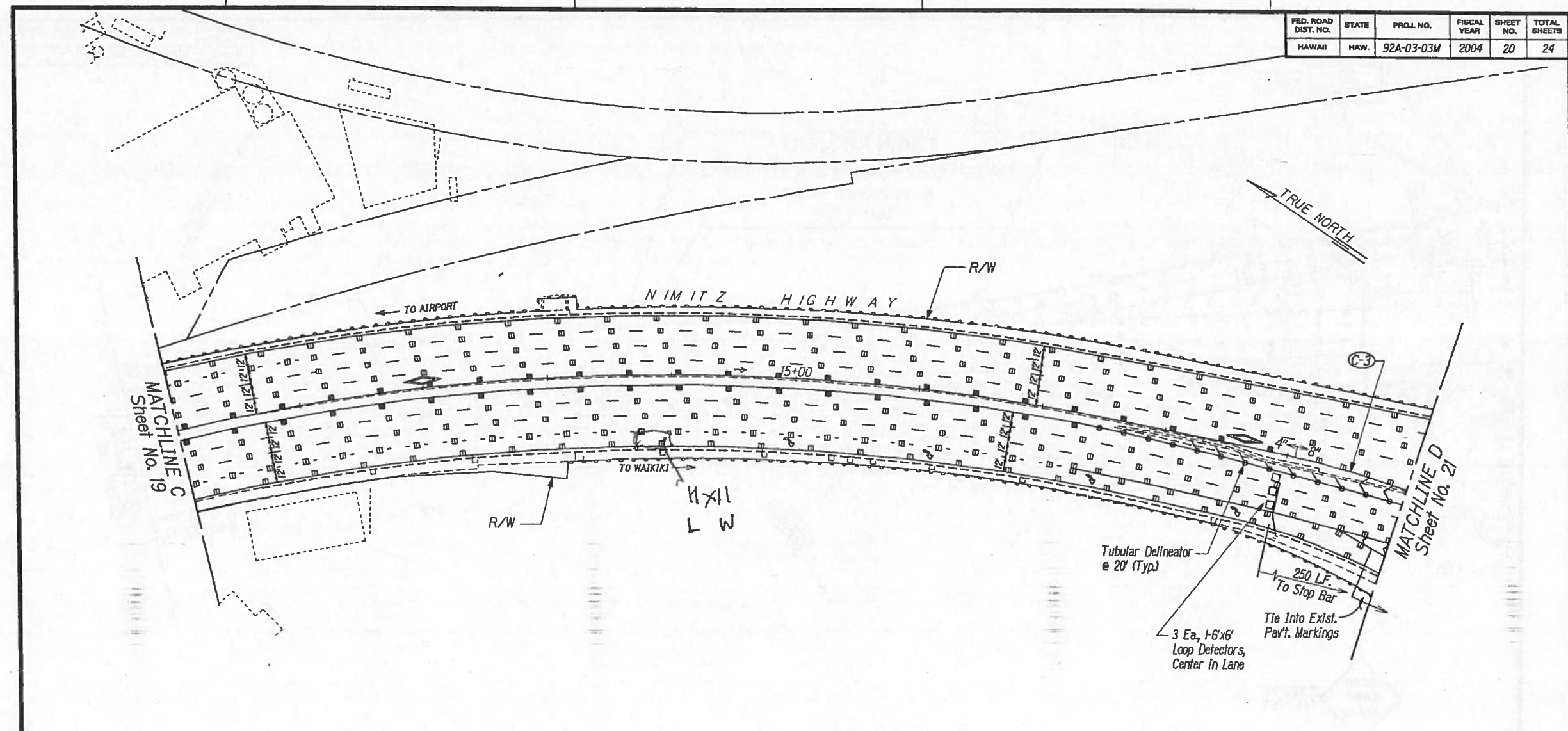
| FED. ROAD DIST. NO. | STATE | PROJ. NO.  | FISCAL YEAR | SHEET NO. | TOTAL SHEETS |
|---------------------|-------|------------|-------------|-----------|--------------|
| HAWAII              | HAW.  | 92A-03-03M | 2004        | 19        | 24           |

|             |      |
|-------------|------|
| DESIGNED BY | DATE |
| DRAWN BY    |      |
| CHECKED BY  |      |
| IN CHARGE   |      |
| NOTED BY    |      |
| DATE        |      |

| DATE   | REVISION                |
|--------|-------------------------|
| 6/8/04 | Add construction signs. |

STATE OF HAWAII  
DEPARTMENT OF TRANSPORTATION  
HIGHWAYS DIVISION  
**PAVEMENT MARKING &  
STRIPING PLAN**  
NIMITZ HIGHWAY  
PAVEMENT PREVENTIVE MAINTENANCE  
Keolu Interchange to Waialae Road  
Project No. 92A-03-03M  
Scale: 1" = 40' Date: May 2004  
SHEET No. 75 OF 10 SHEETS

| FED. ROAD DIST. NO. | STATE | PROJ. NO.  | FISCAL YEAR | SHEET NO. | TOTAL SHEETS |
|---------------------|-------|------------|-------------|-----------|--------------|
| HAWAII              | HAW.  | 92A-03-03M | 2004        | 20        | 24           |



CONTRAFLOW CURVE DATA

| CURVE | RADIUS  | LENGTH  | TANGENT | CHORD   | DELTA       |
|-------|---------|---------|---------|---------|-------------|
| C-3   | 940.66' | 149.17' | 74.74'  | 149.01' | 9°05'09.66" |

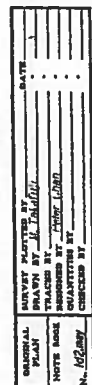
DESIGNED BY: J. J. J. J.  
 DRAWN BY: J. J. J. J.  
 CHECKED BY: J. J. J. J.  
 IN CHARGE: J. J. J. J.  
 DATE: 6/14/04

| DATE    | REVISION        |
|---------|-----------------|
| 6/14/04 | Add HOV symbol. |

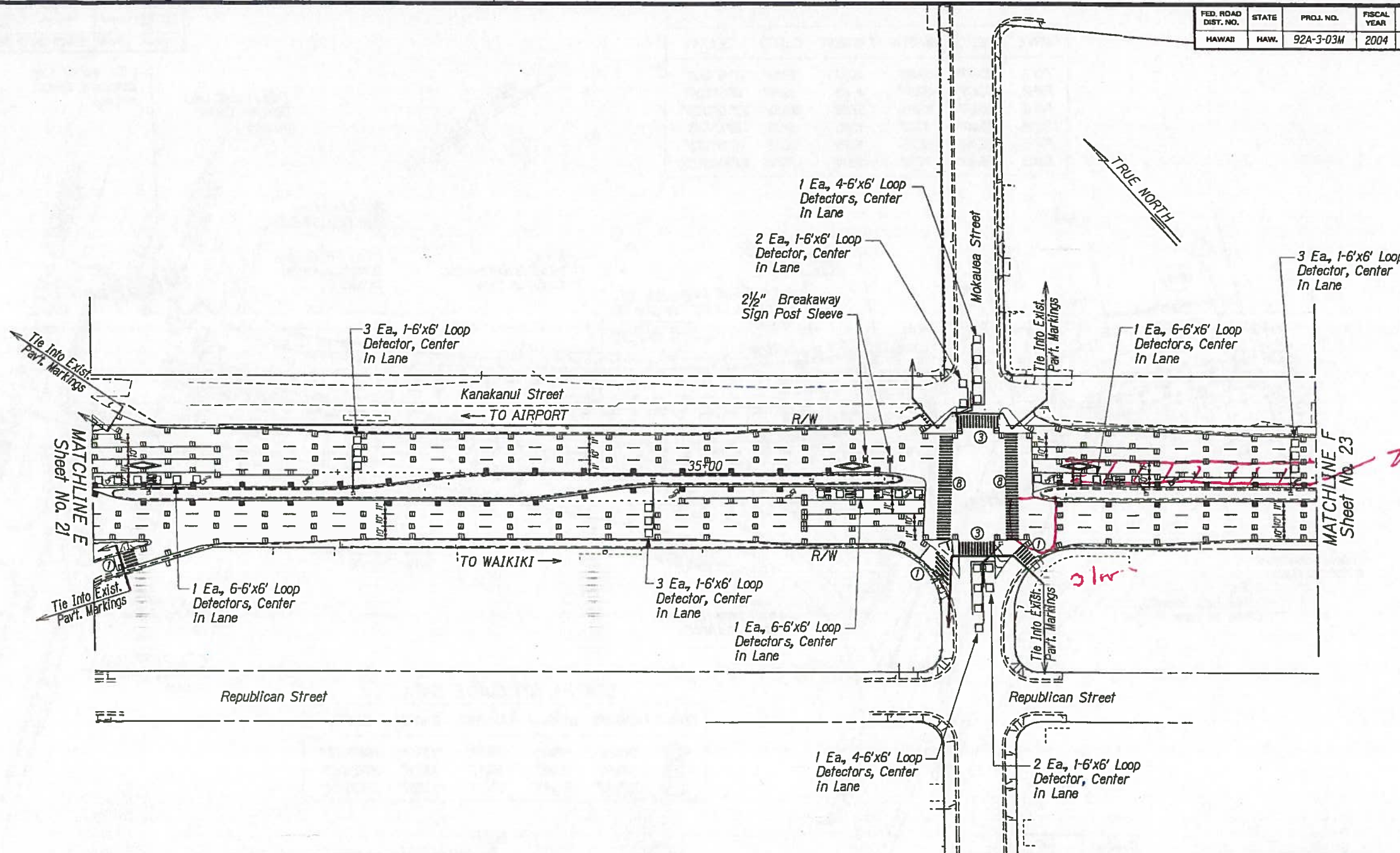
STATE OF HAWAII  
 DEPARTMENT OF TRANSPORTATION  
 HIGHWAYS DIVISION  
**PAVEMENT MARKING, STRIPING  
 & TRAFFIC SIGNAL PLAN**  
 NIMITZ HIGHWAY  
 PAVEMENT PREVENTIVE MAINTENANCE  
 Keolu Interchange to Waiakamilo Road  
 Project No. 92A-03-03M  
 Scale: 1" = 40' Date: May 2004  
 SHEET No. T6 OF 10 SHEETS



| CURVE | RADIUS  | LENGTH  | TANGENT | CHORD   | DELTA        |
|-------|---------|---------|---------|---------|--------------|
| PM-1  | 105.00° | 39.82'  | 20.15'  | 39.58'  | 2°43'49.21"  |
| PM-2  | 105.65° | 32.97'  | 16.62'  | 32.84'  | 17°53'1.24"  |
| PM-3  | 290.00° | 113.26' | 57.36'  | 112.55' | 22°22'41.28" |
| PM-4  | 85.00°  | 34.42'  | 17.45'  | 34.19'  | 23°12'6.76"  |
| PM-5  | 135.00° | 38.25'  | 19.25'  | 38.12'  | 16°14'3.92"  |
| PM-5  | 185.00° | 77.14'  | 39.14'  | 76.58'  | 23°53'27.23" |



| FED. ROAD DIST. NO. | STATE | PROJ. NO. | FISCAL YEAR | SHEET NO. | TOTAL SHEETS |
|---------------------|-------|-----------|-------------|-----------|--------------|
| HAWAII              | HAW.  | 92A-3-03M | 2004        | 22        | 24           |



**NOTE:**  
Provide temporary microwave vehicle detector, mounting bracket & wiring to existing controller while left-turn loop detectors on Nimitz Highway are inoperable. Connection at existing controller by DTS.

|             |      |
|-------------|------|
| DESIGNED BY | DATE |
| DRAWN BY    |      |
| CHECKED BY  |      |
| IN CHARGE   |      |
| NOTED BY    |      |
| REVISION    |      |
| NO. 12/2004 |      |

| 6/14/04 | Add note. |
|---------|-----------|
| DATE    | REVISION  |

STATE OF HAWAII  
DEPARTMENT OF TRANSPORTATION  
HIGHWAY DIVISION

**PAVEMENT MARKING, STRIPING & TRAFFIC SIGNAL PLAN**

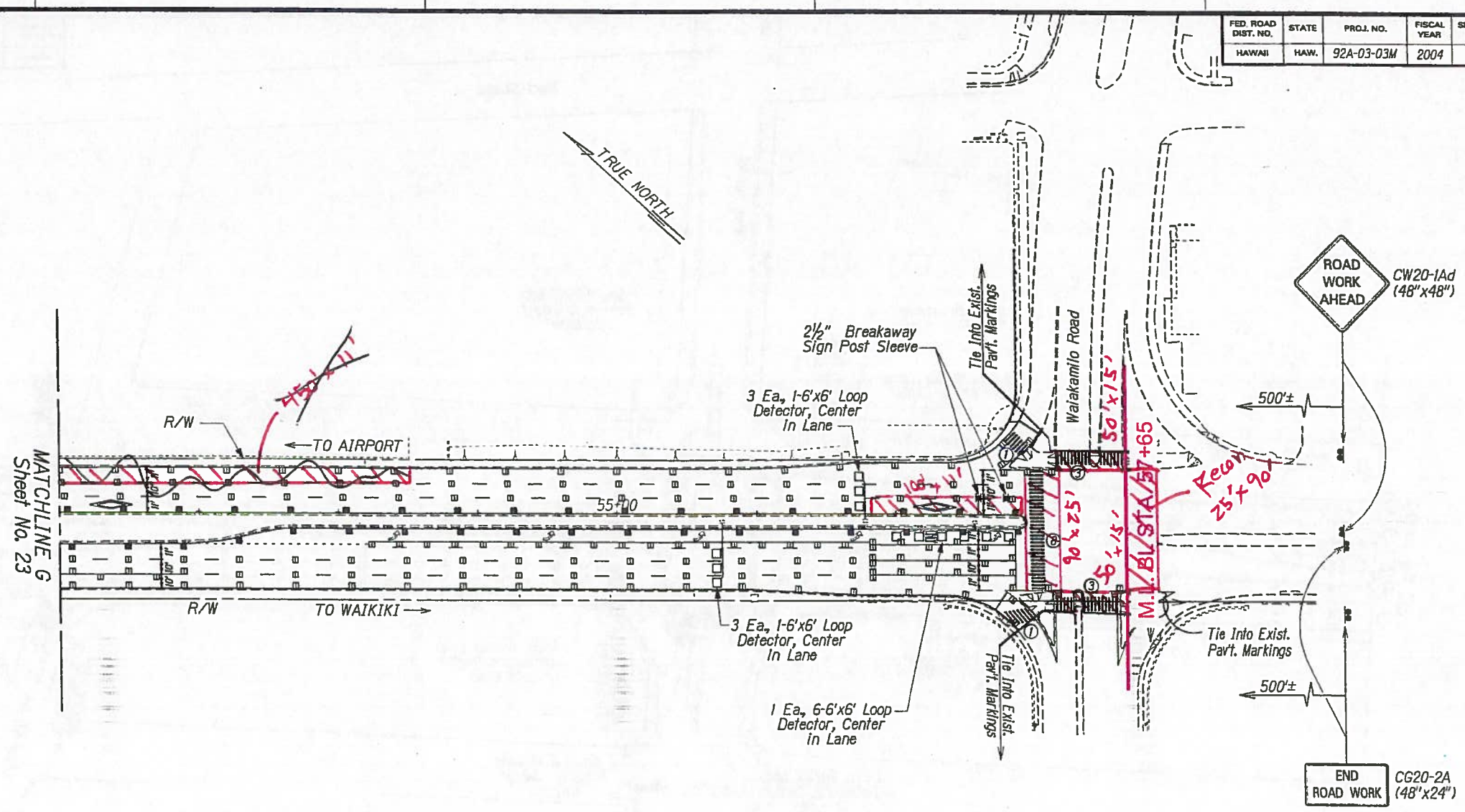
**NIMITZ HIGHWAY**  
PAVEMENT PREVENTIVE MAINTENANCE  
Keehi Interchange to Waialae Blvd.  
Project No. 92A-03-03M  
Scale: 1" = 40' Date: May 2004  
SHEET No. T8 OF 10 SHEETS







| FED. ROAD DIST. NO. | STATE | PROJ. NO.  | FISCAL YEAR | SHEET NO. | TOTAL SHEETS |
|---------------------|-------|------------|-------------|-----------|--------------|
| HAWAII              | HAW.  | 92A-03-03M | 2004        | 24        | 24           |



**NOTE:**  
Provide temporary microwave vehicle detector, mounting bracket & wiring to existing controller while left-turn loop detectors on Nimitz Highway are Inoperable. Connection at existing controller by DTS.

|             |      |
|-------------|------|
| DESIGNED BY | DATE |
| TRACED BY   |      |
| REVIEWED BY |      |
| NOTED BY    |      |
| DATE        |      |

| 6/14/04 | Add construction signs and note. |
|---------|----------------------------------|
| DATE    | REVISION                         |

STATE OF HAWAII  
DEPARTMENT OF TRANSPORTATION  
HIGHWAYS DIVISION

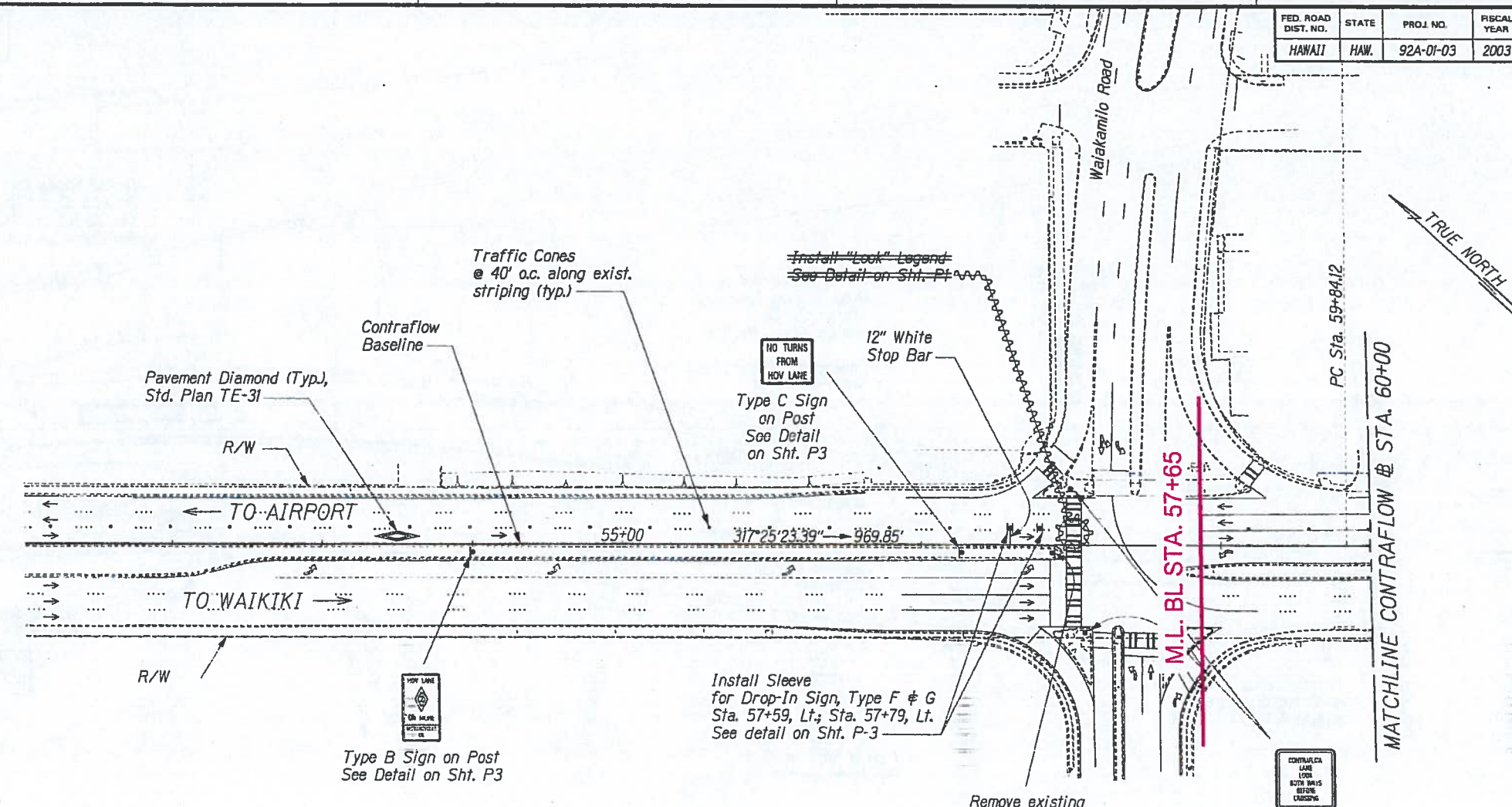
**PAVEMENT MARKING, STRIPING  
& TRAFFIC SIGNAL PLAN**

**NIMITZ HIGHWAY**  
PAVEMENT PREVENTIVE MAINTENANCE  
Keehl Interchange to Waialae Blvd.  
Project No. 92A-03-03M  
Scale: 1" = 40' Date: May 2004

SHEET No. 110 OF 10 SHEETS



| FED. ROAD DIST. NO. | STATE | PROJ. NO. | FISCAL YEAR | SHEET NO. | TOTAL SHEETS |
|---------------------|-------|-----------|-------------|-----------|--------------|
| HAWAII              | HAW.  | 92A-01-03 | 2003        | 58        | 70           |



| LEGEND FOR AS-BUILT POSTINGS |                                     |
|------------------------------|-------------------------------------|
|                              | Squiggly line for as-built deletion |
|                              | Double line for as-built deletion   |
| Roadway                      | Text for as-built posting           |

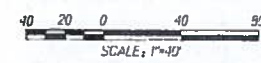
Remove existing Signs and Install

R3-4

Type H Sign  
See Detail on Sht. P3

Type D Sign  
See Detail on Sht. P3

Type E Sign on existing Signal Post  
See Detail on Sht. P3



|             |      |
|-------------|------|
| DESIGNED BY | DATE |
| DRAWN BY    |      |
| CHECKED BY  |      |
| IN CHARGE   |      |
| NOTED BY    |      |
| DATE        |      |

NIMITZ CH / SIGN / SP-06.dgn

THIS WORK WAS PREPARED BY ME OR UNDER MY SUPERVISION.

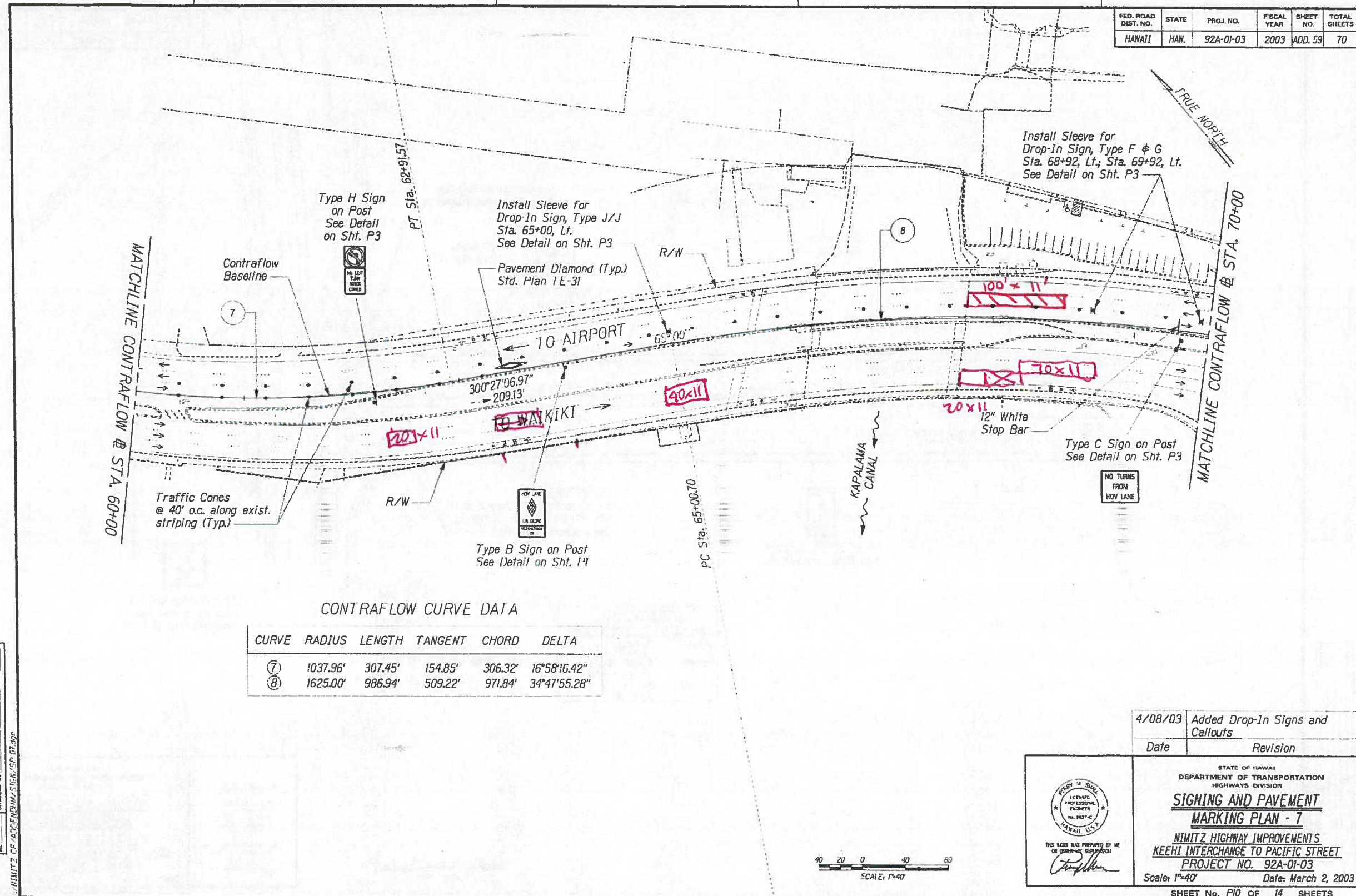
STATE OF HAWAII  
DEPARTMENT OF TRANSPORTATION  
HIGHWAYS DIVISION

**SIGNING AND PAVEMENT MARKING PLAN - 6**

NIMITZ HIGHWAY IMPROVEMENTS  
KEEHI INTERCHANGE TO PACIFIC STREET  
PROJECT NO. 92A-01-03  
Scale: 1"=40' Date: March 2, 2003



| FED. ROAD DIST. NO. | STATE | PROJ. NO. | FISCAL YEAR | SHEET NO. | TOTAL SHEETS |
|---------------------|-------|-----------|-------------|-----------|--------------|
| HAWAII              | HAW.  | 92A-01-03 | 2003        | ADD. 59   | 70           |



CONTRAFLOW CURVE DATA

| CURVE | RADIUS   | LENGTH  | TANGENT | CHORD   | DELTA        |
|-------|----------|---------|---------|---------|--------------|
| ⑦     | 1037.96' | 307.45' | 154.85' | 306.32' | 16°58'16.42" |
| ⑧     | 1625.00' | 986.94' | 509.22' | 971.84' | 34°47'55.28" |

|             |      |
|-------------|------|
| DESIGNED BY | DATE |
| CHECKED BY  |      |
| IN CHARGE   |      |
| APPROVED BY |      |

NIMITZ HIGHWAY IMPROVEMENTS/STATION 60+00 TO 70+00



|         |                                  |
|---------|----------------------------------|
| 4/08/03 | Added Drop-In Signs and Callouts |
| Date    | Revision                         |

THIS SEAL WAS PREPARED BY ME OR UNDER MY SUPERVISION

*David A. Small*

STATE OF HAWAII  
DEPARTMENT OF TRANSPORTATION  
HIGHWAYS DIVISION

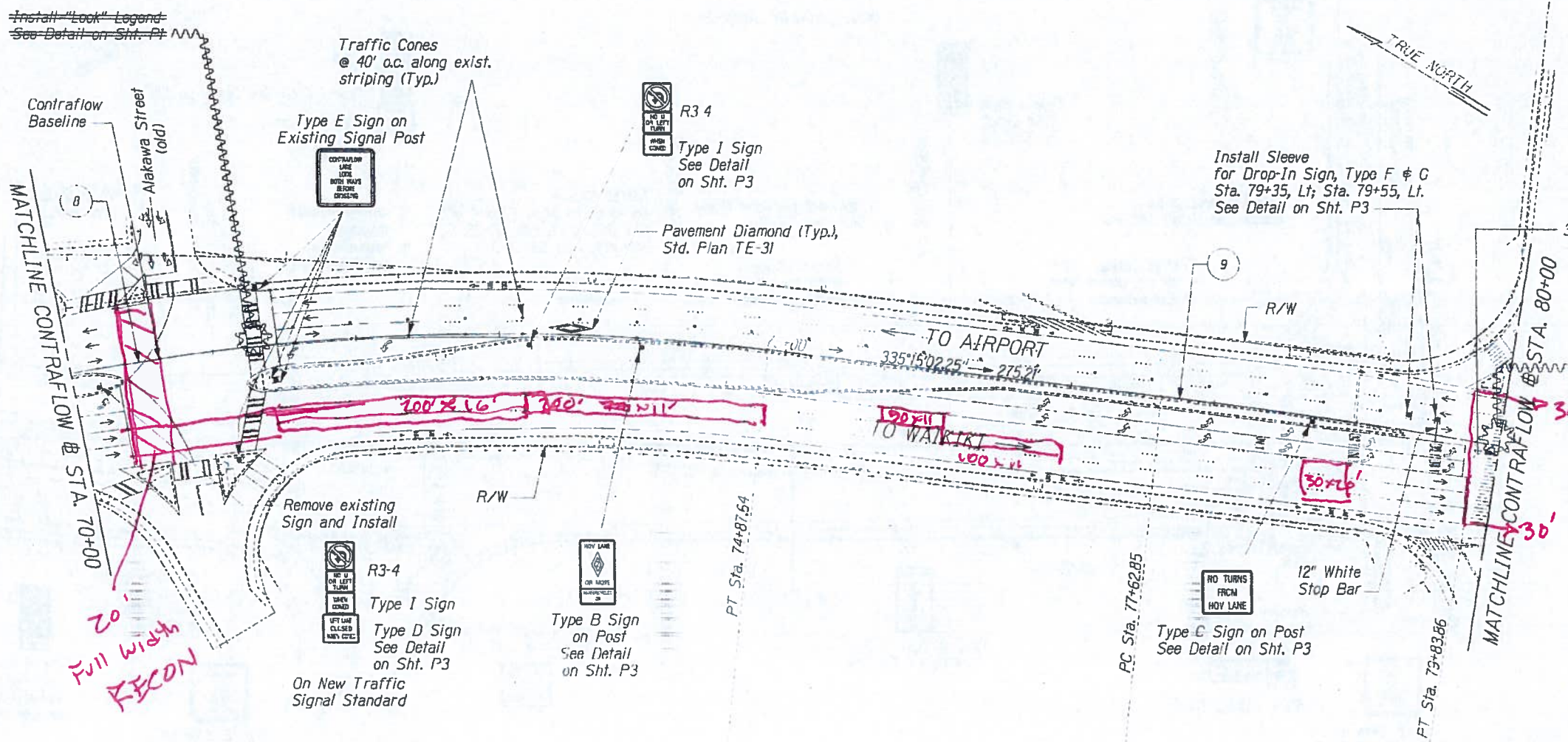
**SIGNING AND PAVEMENT  
MARKING PLAN - 7**

NIMITZ HIGHWAY IMPROVEMENTS  
KEEHI INTERCHANGE TO PACIFIC STREET  
PROJECT NO. 92A-01-03  
Scale: 1"=40' Date: March 2, 2003

SHEET No. P10 OF 14 SHEETS



| FED. ROAD DIST. NO. | STATE | PROJ. NO. | FISCAL YEAR | SHEET NO. | TOTAL SHEETS |
|---------------------|-------|-----------|-------------|-----------|--------------|
| HAWAII              | HAW.  | 92A-01-03 | 2003        | 60        | 70           |

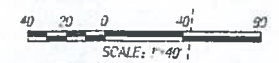


CONTRAFLOW CURVE DATA

| CURVE | RADIUS   | LENGTH  | TANGENT | CHORD   | DELTA        |
|-------|----------|---------|---------|---------|--------------|
| ⑧     | 1625.00' | 986.94' | 509.22' | 971.84' | 34°47'55.28" |
| ⑨     | 4450.00' | 221.01' | 110.53' | 220.99' | 2°50'44.51"  |

| LEGEND FOR AS-BUILT POSTINGS |                                     |
|------------------------------|-------------------------------------|
|                              | Squiggly line for as-built deletion |
|                              | Double line for as-built deletion   |
| Roadway                      | Text for as-built posting           |

|             |      |
|-------------|------|
| DESIGNED BY | DATE |
| TRACED BY   |      |
| CHECKED BY  |      |
| APPROVED BY |      |



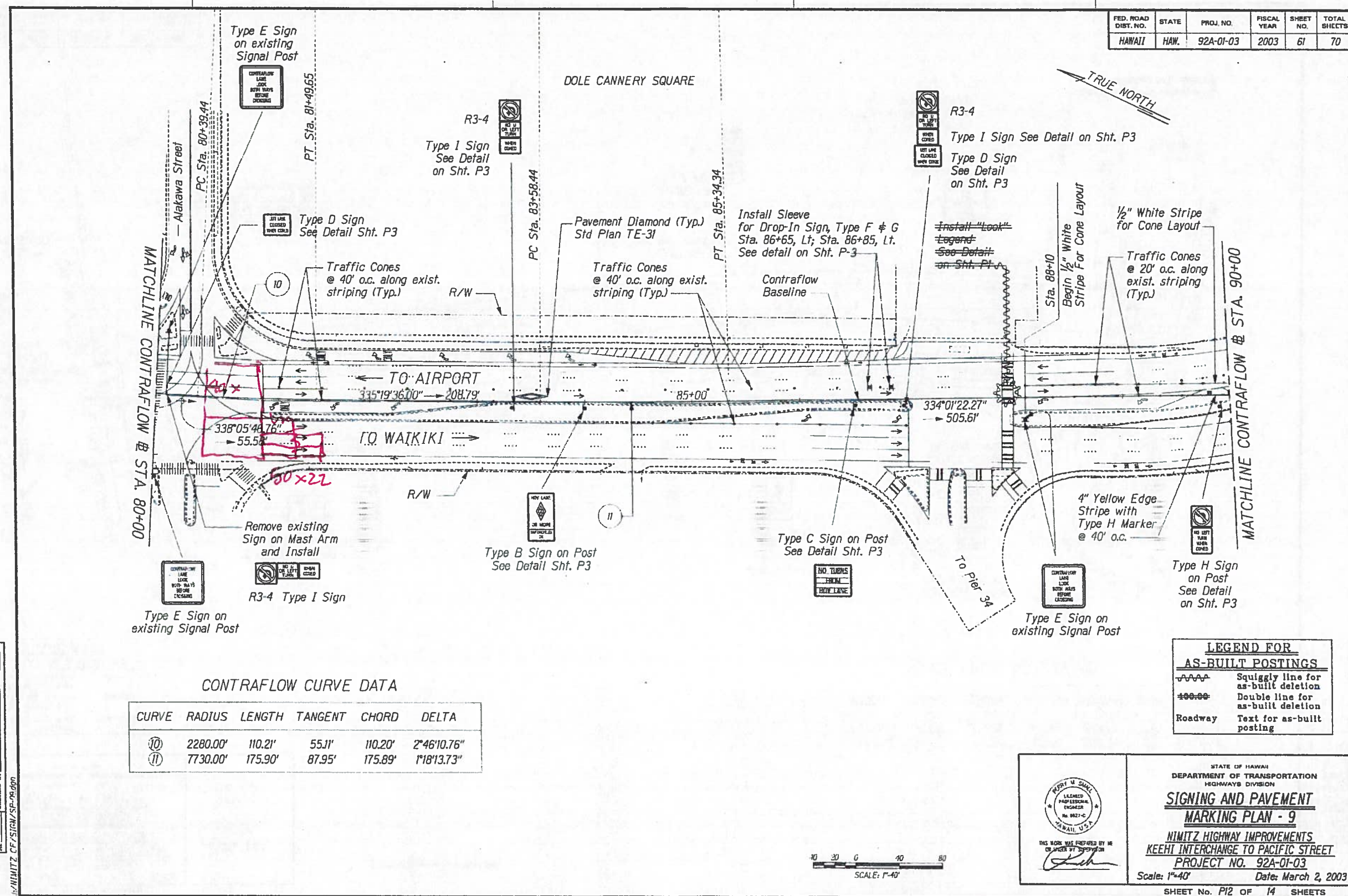
STATE OF HAWAII  
DEPARTMENT OF TRANSPORTATION  
HIGHWAYS DIVISION

**SIGNING AND PAVEMENT MARKING PLAN - 8**

NIMITZ HIGHWAY IMPROVEMENTS  
KEEHI INTERCHANGE TO PACIFIC STREET  
PROJECT NO. 92A-01-03  
Scale: 1"=40' Date: March 2, 2003  
SHEET No. P11 OF 14 SHEETS



| FED. ROAD DIST. NO. | STATE | PROJ. NO. | FISCAL YEAR | SHEET NO. | TOTAL SHEETS |
|---------------------|-------|-----------|-------------|-----------|--------------|
| HAWAII              | HAW.  | 92A-01-03 | 2003        | 61        | 70           |



CONTRAFLOW CURVE DATA

| CURVE | RADIUS   | LENGTH  | TANGENT | CHORD   | DELTA       |
|-------|----------|---------|---------|---------|-------------|
| 10    | 2280.00' | 110.21' | 55.11'  | 110.20' | 2°46'10.76" |
| 11    | 7730.00' | 175.90' | 87.95'  | 175.89' | 1°18'13.73" |

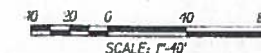
| LEGEND FOR AS-BUILT POSTINGS |                                     |
|------------------------------|-------------------------------------|
| ~~~~~                        | Squiggly line for as-built deletion |
| ==                           | Double line for as-built deletion   |
| Roadway                      | Text for as-built posting           |

THIS WORK WAS PREPARED BY ME OR UNDER MY SUPERVISION

STATE OF HAWAII  
DEPARTMENT OF TRANSPORTATION  
HIGHWAYS DIVISION

**SIGNING AND PAVEMENT MARKING PLAN - 9**

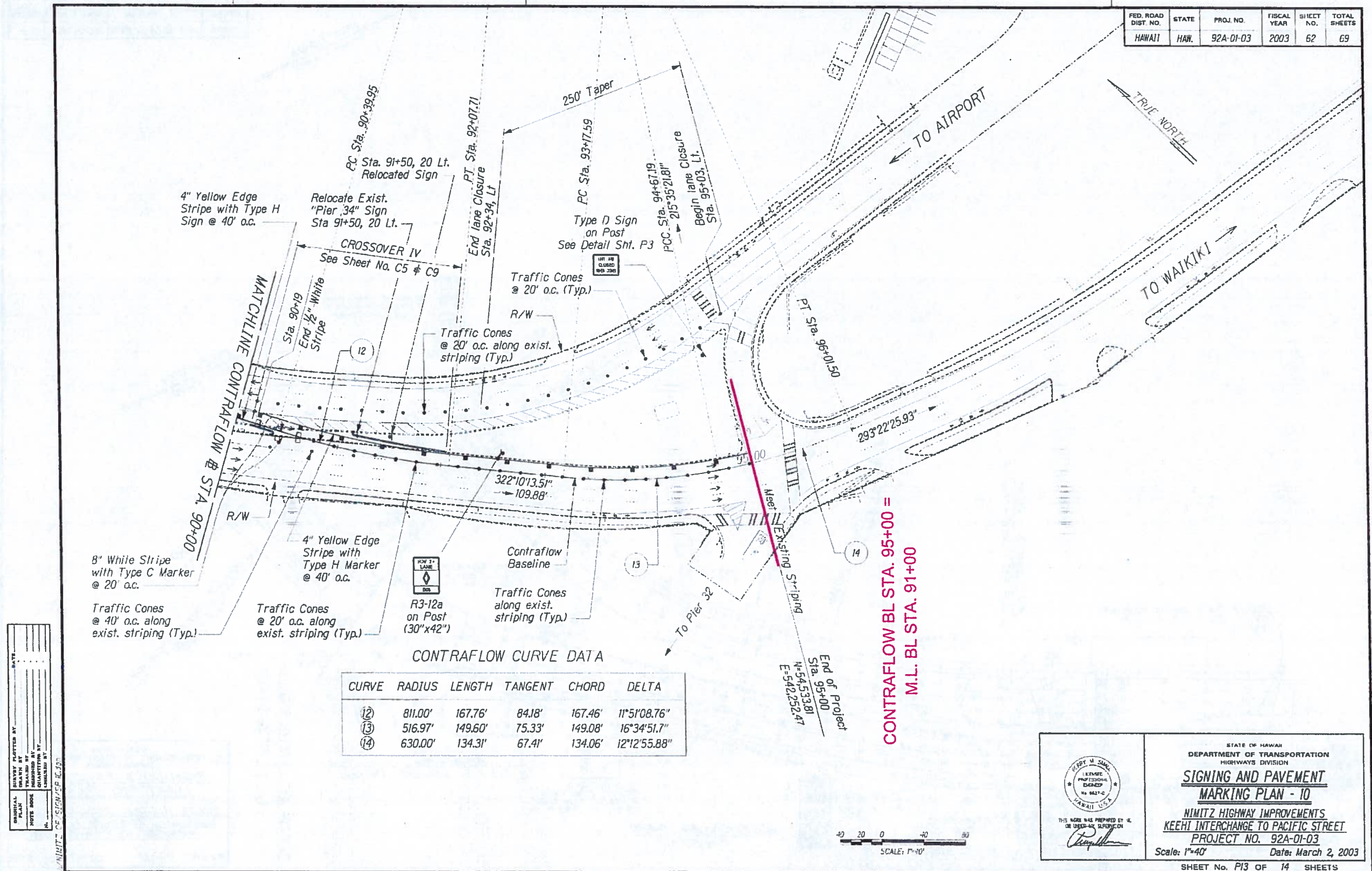
NIMITZ HIGHWAY IMPROVEMENTS  
KEEHI INTERCHANGE TO PACIFIC STREET  
PROJECT NO. 92A-01-03  
Scale: 1"=40' Date: March 2, 2003



NIMITZ CF/SIG/SP-00-000  
 SURVEY PLATTED BY: \_\_\_\_\_  
 DRAWN BY: \_\_\_\_\_  
 CHECKED BY: \_\_\_\_\_  
 DATE: \_\_\_\_\_  
 ORIGINAL PLAN: \_\_\_\_\_  
 NOTE: \_\_\_\_\_  
 QUANTITIES BY: \_\_\_\_\_  
 CHECKED BY: \_\_\_\_\_



| FED. ROAD DIST. NO. | STATE | PROJ. NO. | FISCAL YEAR | SHEET NO. | TOTAL SHEETS |
|---------------------|-------|-----------|-------------|-----------|--------------|
| HAWAII              | HAW.  | 92A-01-03 | 2003        | 62        | 69           |

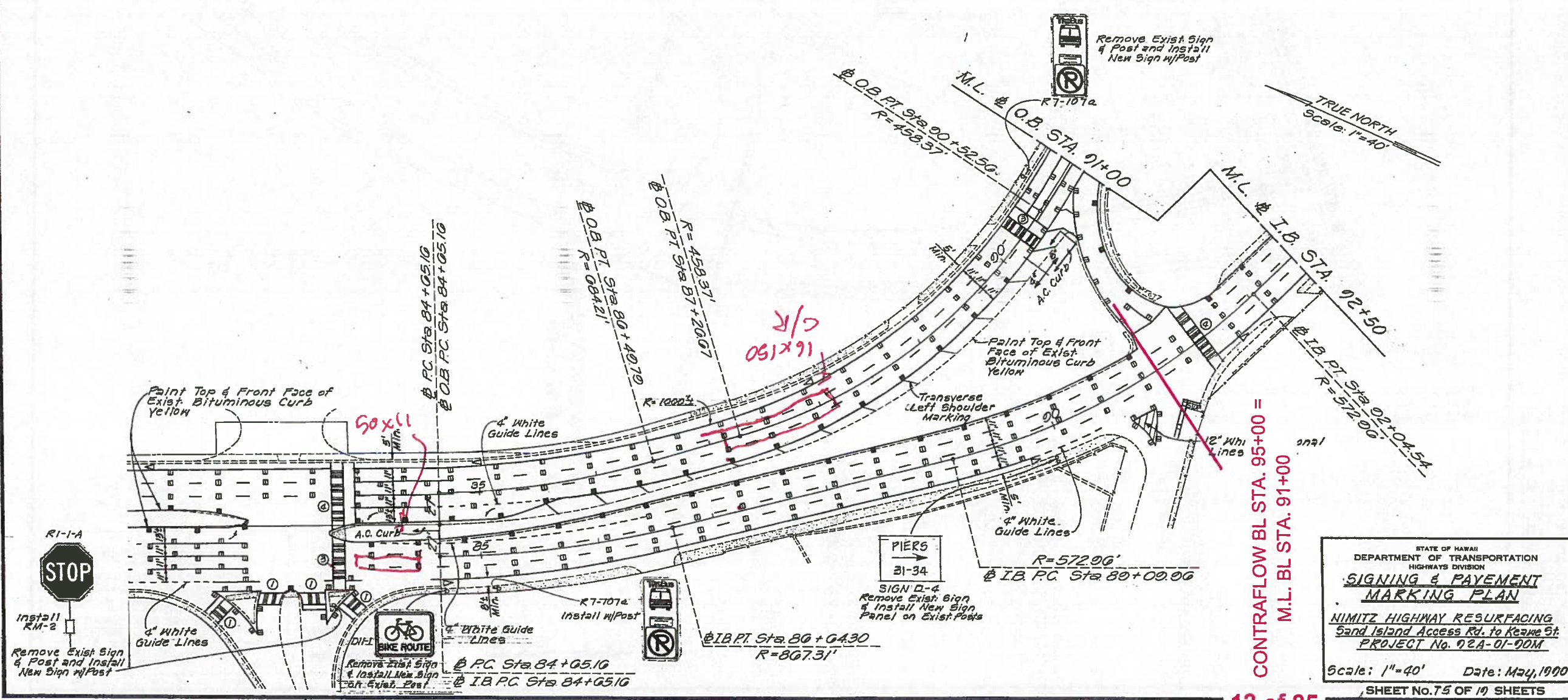




| FED. ROAD DIST. NO. | STATE | PROJ. NO.  | FISCAL YEAR | SHEET NO. | TOTAL SHEETS |
|---------------------|-------|------------|-------------|-----------|--------------|
| HAWAII              | HAW.  | 02A-01-00M | 1990        | 20        | 34           |

TRUE NORTH  
Scale: 1"=40'

TRUE NORTH  
Scale: 1"=40'



CONTRAFLOW BL STA. 95+00 =  
M.L. BL STA. 91+00

STATE OF HAWAII  
DEPARTMENT OF TRANSPORTATION  
HIGHWAYS DIVISION

**SIGNING & PAYEMENT  
MARKING PLAN**

NIMITZ HIGHWAY RESURFACING  
Sand Island Access Rd. to Keawe St.  
PROJECT No. 02A-01-00M

Scale: 1"=40' Date: May, 1990

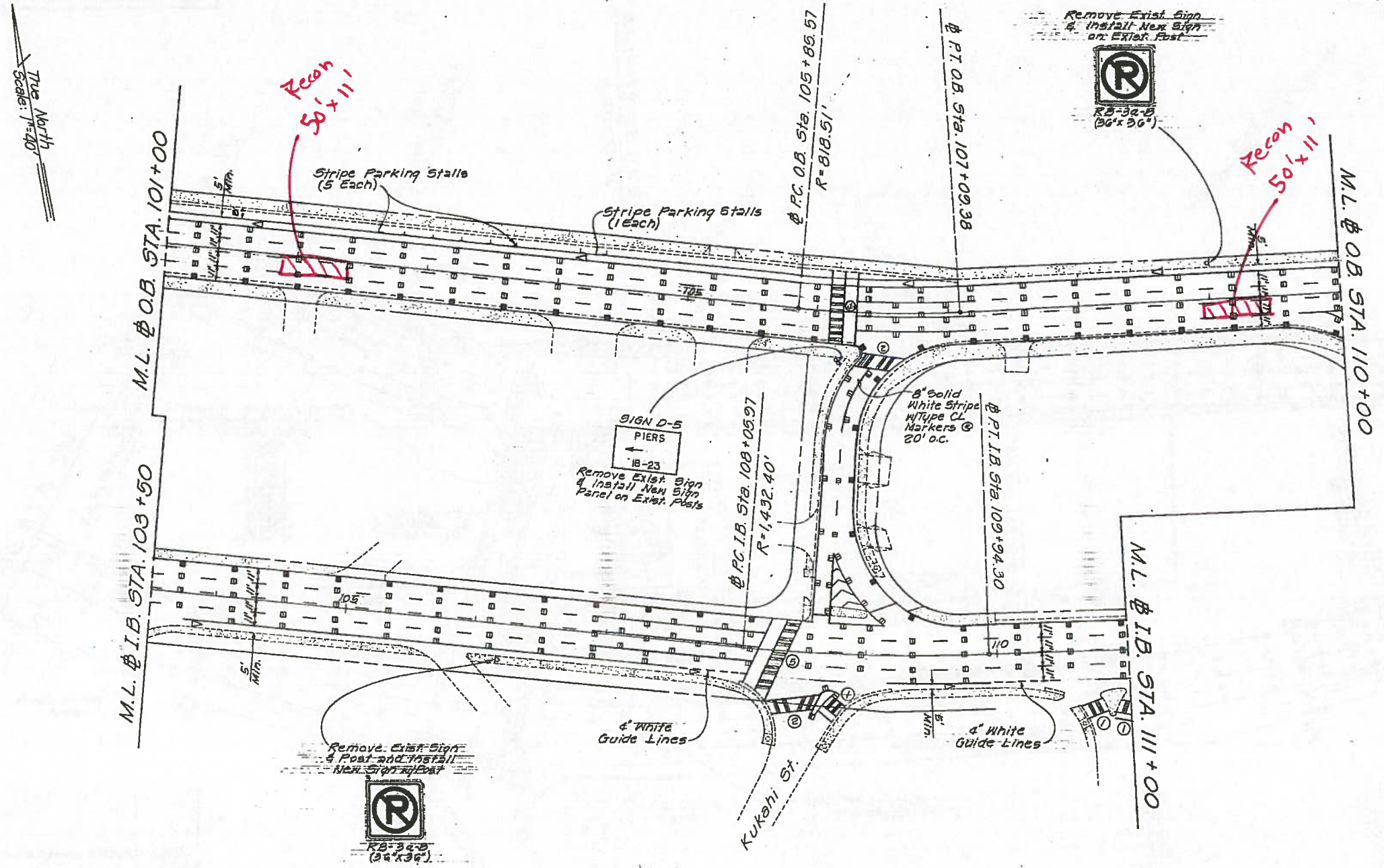
SHEET No. 75 OF 10 SHEETS







| FED. ROAD DIST. NO. | STATE | PROJ. NO.  | FISCAL YEAR | SHEET NO. | TOTAL SHEETS |
|---------------------|-------|------------|-------------|-----------|--------------|
| HAWAII              | HAW.  | 02A-01-00M | 1990        | 22        | 34           |



STATE OF HAWAII  
DEPARTMENT OF TRANSPORTATION  
HIGHWAYS DIVISION

**SIGNING & PAYEMENT  
MARKING PLAN**

NIMITZ HIGHWAY RESURFACING  
Sand Island Access Rd. to Keawe St.  
PROJECT No. 02A-01-00M

Scale: 1"=40' Date: May, 1990

SHEET No. 77 OF 19 SHEETS



Key:

- Mount on New Post
- Mount on New Lighting Standard

Note:

All W11-2 signs shall be fluorescent yellow-green.

4" Wide Double Solid Yellow Lines w/ Type "D" RPMs @ 20' O.C.

STOP R1-1 30"x30" ONE WAY R6-1(R) 36"x12"

12" Wide White Line 24"x24"

80' Lane Width Transition 110' 00' To Airport

SUMNER STREET (STATE) 100'

4" Wide White Line 2' Long @ 4' Spacing, Typ.

6" Wide White Line 2' Long @ 6' Spacing R1-1 30"x30"

4" Wide White Line 2' Long @ 4' Spacing, Typ.

W11-2 30"x30"

W16-7(R), 30"x18", for left side of roadway

W16-7(L), 30"x18", for right side of roadway

END TAPER

SW1-8 24"x30"

W2-2 30"x30"

W11-2 30"x30"

R3-5R 30"x36"

STOP R1-1 30"x30" DO NOT ENTER R5-1 30"x30"

4" Wide White Line 2' Long @ 4' Spacing, Typ.

R6-1(R) 36"x12"

R6-1(L) 36"x12"

STOP R1-1 30"x30"

4" Wide White Line 2' Long @ 4' Spacing, Typ.

STOP R1-1 30"x30"

4" Wide White Line 2' Long @ 4' Spacing, Typ.

STOP R1-1 30"x30"

4" Wide White Line 2' Long @ 4' Spacing, Typ.

STOP R1-1 30"x30"

SW1-1L-A 48"x48"

STOP R1-1 30"x30"

4" Wide White Line 2' Long @ 4' Spacing, Typ.

STOP R1-1 30"x30"

4" Wide White Line 2' Long @ 4' Spacing, Typ.

STOP R1-1 30"x30"

4" Wide White Line 2' Long @ 4' Spacing, Typ.

STOP R1-1 30"x30"

4" Wide White Line 2' Long @ 4' Spacing, Typ.

STOP R1-1 30"x30"

4" Wide White Line 2' Long @ 4' Spacing, Typ.

STOP R1-1 30"x30"

4" Wide White Line 2' Long @ 4' Spacing, Typ.

STOP R1-1 30"x30"

4" Wide White Line 2' Long @ 4' Spacing, Typ.

SW1-8 24"x30"

W2-2 30"x30"

W11-2 30"x30"

R3-5R 30"x36"

STOP R1-1 30"x30" DO NOT ENTER R5-1 30"x30"

4" Wide White Line 2' Long @ 4' Spacing, Typ.

R6-1(R) 36"x12"

R6-1(L) 36"x12"

STOP R1-1 30"x30"

4" Wide White Line 2' Long @ 4' Spacing, Typ.

STOP R1-1 30"x30"

4" Wide White Line 2' Long @ 4' Spacing, Typ.

STOP R1-1 30"x30"

4" Wide White Line 2' Long @ 4' Spacing, Typ.

STOP R1-1 30"x30"

SW1-1L-A 48"x48"

STOP R1-1 30"x30"

4" Wide White Line 2' Long @ 4' Spacing, Typ.

STOP R1-1 30"x30"

4" Wide White Line 2' Long @ 4' Spacing, Typ.

STOP R1-1 30"x30"

4" Wide White Line 2' Long @ 4' Spacing, Typ.

STOP R1-1 30"x30"

4" Wide White Line 2' Long @ 4' Spacing, Typ.

STOP R1-1 30"x30"

4" Wide White Line 2' Long @ 4' Spacing, Typ.

STOP R1-1 30"x30"

4" Wide White Line 2' Long @ 4' Spacing, Typ.

STOP R1-1 30"x30"

4" Wide White Line 2' Long @ 4' Spacing, Typ.

SW1-8 24"x30"

W2-2 30"x30"

W11-2 30"x30"

R3-5R 30"x36"

STOP R1-1 30"x30" DO NOT ENTER R5-1 30"x30"

4" Wide White Line 2' Long @ 4' Spacing, Typ.

R6-1(R) 36"x12"

R6-1(L) 36"x12"

STOP R1-1 30"x30"

4" Wide White Line 2' Long @ 4' Spacing, Typ.

STOP R1-1 30"x30"

4" Wide White Line 2' Long @ 4' Spacing, Typ.

STOP R1-1 30"x30"

4" Wide White Line 2' Long @ 4' Spacing, Typ.

STOP R1-1 30"x30"

SW1-1L-A 48"x48"

STOP R1-1 30"x30"

4" Wide White Line 2' Long @ 4' Spacing, Typ.

STOP R1-1 30"x30"

4" Wide White Line 2' Long @ 4' Spacing, Typ.

STOP R1-1 30"x30"

4" Wide White Line 2' Long @ 4' Spacing, Typ.

STOP R1-1 30"x30"

4" Wide White Line 2' Long @ 4' Spacing, Typ.

STOP R1-1 30"x30"

4" Wide White Line 2' Long @ 4' Spacing, Typ.

STOP R1-1 30"x30"

4" Wide White Line 2' Long @ 4' Spacing, Typ.

STOP R1-1 30"x30"

4" Wide White Line 2' Long @ 4' Spacing, Typ.

SW1-8 24"x30"

W2-2 30"x30"

W11-2 30"x30"

R3-5R 30"x36"

STOP R1-1 30"x30" DO NOT ENTER R5-1 30"x30"

4" Wide White Line 2' Long @ 4' Spacing, Typ.

R6-1(R) 36"x12"

R6-1(L) 36"x12"

STOP R1-1 30"x30"

4" Wide White Line 2' Long @ 4' Spacing, Typ.

STOP R1-1 30"x30"

4" Wide White Line 2' Long @ 4' Spacing, Typ.

STOP R1-1 30"x30"

4" Wide White Line 2' Long @ 4' Spacing, Typ.

STOP R1-1 30"x30"

SW1-1L-A 48"x48"

STOP R1-1 30"x30"

4" Wide White Line 2' Long @ 4' Spacing, Typ.

STOP R1-1 30"x30"

4" Wide White Line 2' Long @ 4' Spacing, Typ.

STOP R1-1 30"x30"

4" Wide White Line 2' Long @ 4' Spacing, Typ.

STOP R1-1 30"x30"

4" Wide White Line 2' Long @ 4' Spacing, Typ.

STOP R1-1 30"x30"

4" Wide White Line 2' Long @ 4' Spacing, Typ.

STOP R1-1 30"x30"

4" Wide White Line 2' Long @ 4' Spacing, Typ.

STOP R1-1 30"x30"

4" Wide White Line 2' Long @ 4' Spacing, Typ.

SW1-8 24"x30"

W2-2 30"x30"

W11-2 30"x30"

R3-5R 30"x36"

STOP R1-1 30"x30" DO NOT ENTER R5-1 30"x30"

4" Wide White Line 2' Long @ 4' Spacing, Typ.

R6-1(R) 36"x12"

R6-1(L) 36"x12"

STOP R1-1 30"x30"

4" Wide White Line 2' Long @ 4' Spacing, Typ.

STOP R1-1 30"x30"

4" Wide White Line 2' Long @ 4' Spacing, Typ.

STOP R1-1 30"x30"

4" Wide White Line 2' Long @ 4' Spacing, Typ.

STOP R1-1 30"x30"

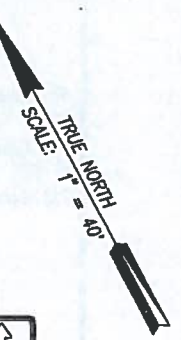
M.L. BL OB STA. 110

M.L. BL IB STA. 111

|             |      |
|-------------|------|
| REVIEWED BY | DATE |
| DESIGNED BY | DATE |
| CHECKED BY  | DATE |
| APPROVED BY | DATE |

RVC JOB NO. 1-18581-02

| FED. ROAD DIST. NO. | STATE | FED. AID PROJ. NO. | FISCAL YEAR | SHEET NO. | TOTAL SHEETS |
|---------------------|-------|--------------------|-------------|-----------|--------------|
| HAWAII              | HAW.  | NH-092-1(25)       | 2002        | ADD. 52   | 288          |



APPROVED:

Chief, Traffic Review Branch, DPP Date (For Work Within City ROW Only)



THIS WORK WAS PREPARED BY ME OR UNDER MY SUPERVISION

STATE OF HAWAII  
DEPARTMENT OF TRANSPORTATION  
HIGHWAYS DIVISION  
PAVEMENT MARKING & SIGNING PLAN - 1  
NIMITZ HIGHWAY REHABILITATION  
SUMNER STREET TO QUEEN STREET  
F.A.I. Proj. No. NH-092-1(25)

Scale: As shown Date: 10/19/01  
SHEET No. C-52 OF 107 SHEETS







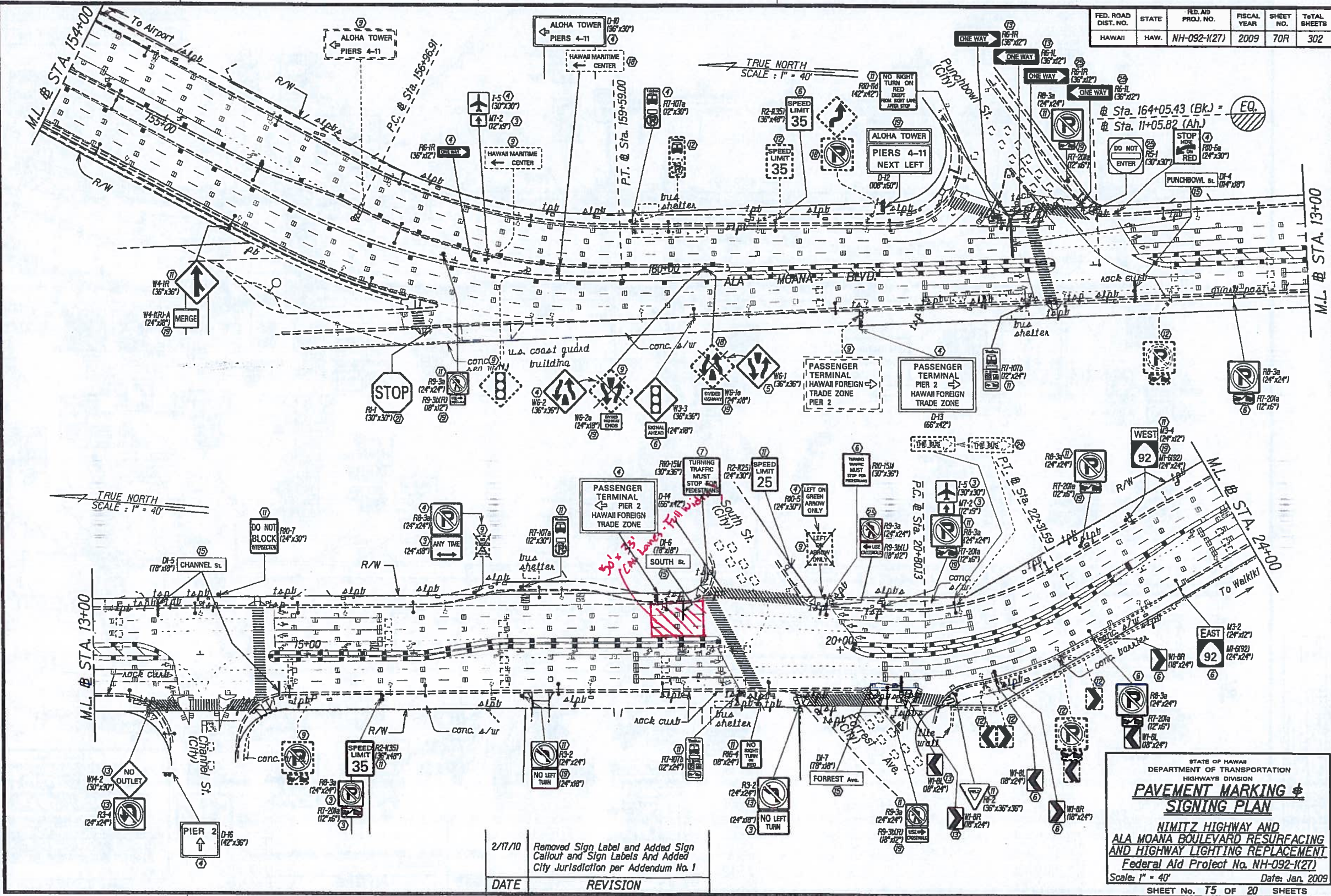








DESIGNED BY: J. J. J. J.  
CHECKED BY: J. J. J. J.  
DATE: 1/17/10



|         |  |
|---------|--|
| 2/17/10 | Removed Sign Label and Added Sign Callout and Sign Labels And Added City Jurisdiction per Addendum No. 1 |
| DATE    | REVISION   |

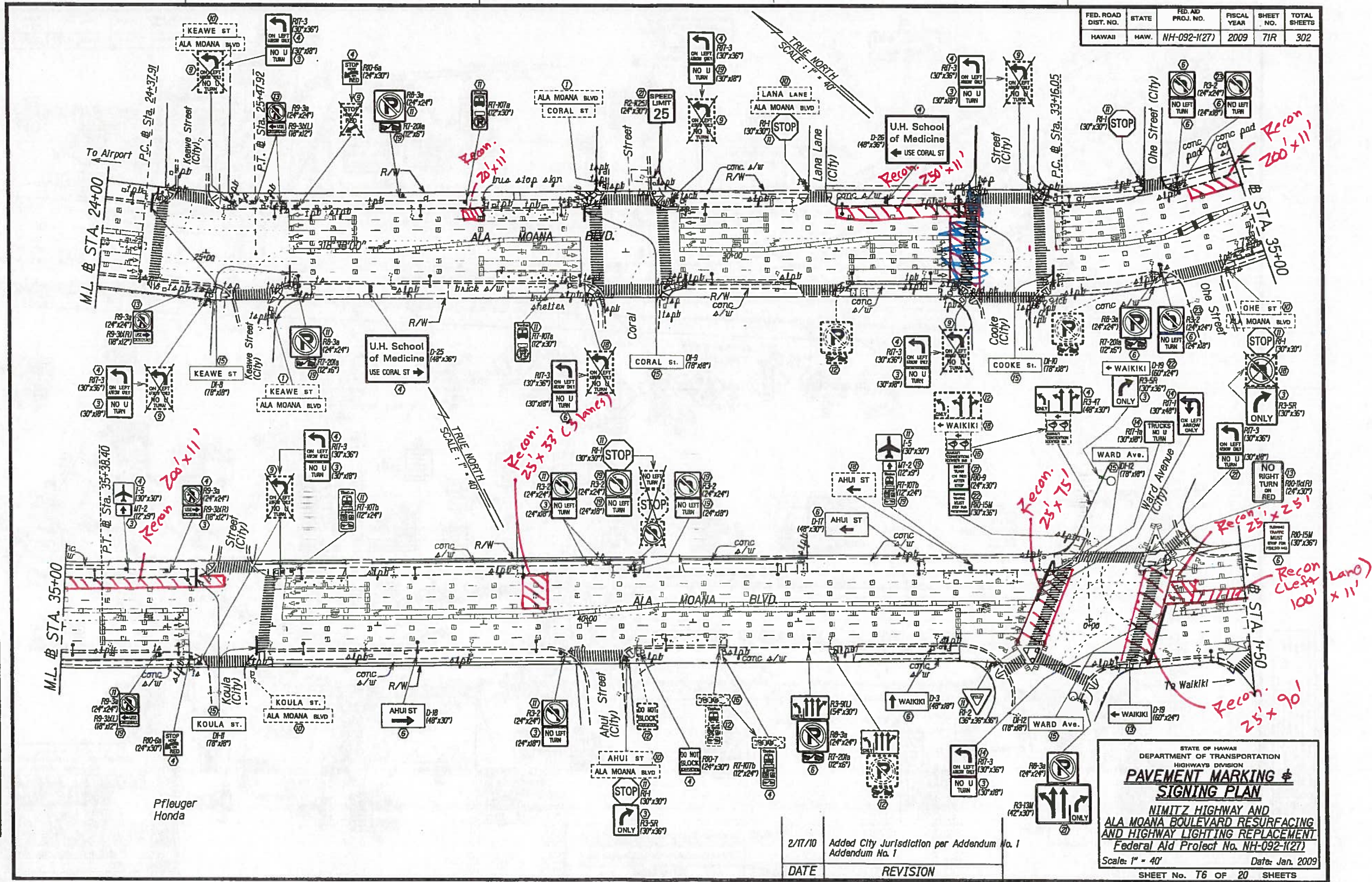
|                     |       |                    |             |           |              |
|---------------------|-------|--------------------|-------------|-----------|--------------|
| FED. ROAD DIST. NO. | STATE | FED. AID PROJ. NO. | FISCAL YEAR | SHEET NO. | TOTAL SHEETS |
| HAWAII              | HAW.  | NH-092-1(27)       | 2009        | 70R       | 302          |

STATE OF HAWAII  
DEPARTMENT OF TRANSPORTATION  
HIGHWAYS DIVISION  
**PAVEMENT MARKING & SIGNING PLAN**  
NIMITZ HIGHWAY AND  
ALA MOANA BOULEVARD RESURFACING  
AND HIGHWAY LIGHTING REPLACEMENT  
Federal Aid Project No. NH-092-1(27)  
Scale: 1" = 40' Date: Jan. 2009  
SHEET No. T5 OF 20 SHEETS



| FED. ROAD DIST. NO. | STATE | FED. AID PROJ. NO. | FISCAL YEAR | SHEET NO. | TOTAL SHEETS |
|---------------------|-------|--------------------|-------------|-----------|--------------|
| HAWAII              | HAW.  | NH-092-1(27)       | 2009        | 71R       | 302          |

|             |      |
|-------------|------|
| DESIGNED BY | DATE |
| DRAWN BY    |      |
| CHECKED BY  |      |
| IN CHARGE   |      |
| APPROVED BY |      |



| DATE    | REVISION                                   |
|---------|--|
| 2/17/10 | Added City Jurisdiction per Addendum No. 1 |
|         | Addendum No. 1                             |

STATE OF HAWAII  
DEPARTMENT OF TRANSPORTATION  
HIGHWAYS DIVISION

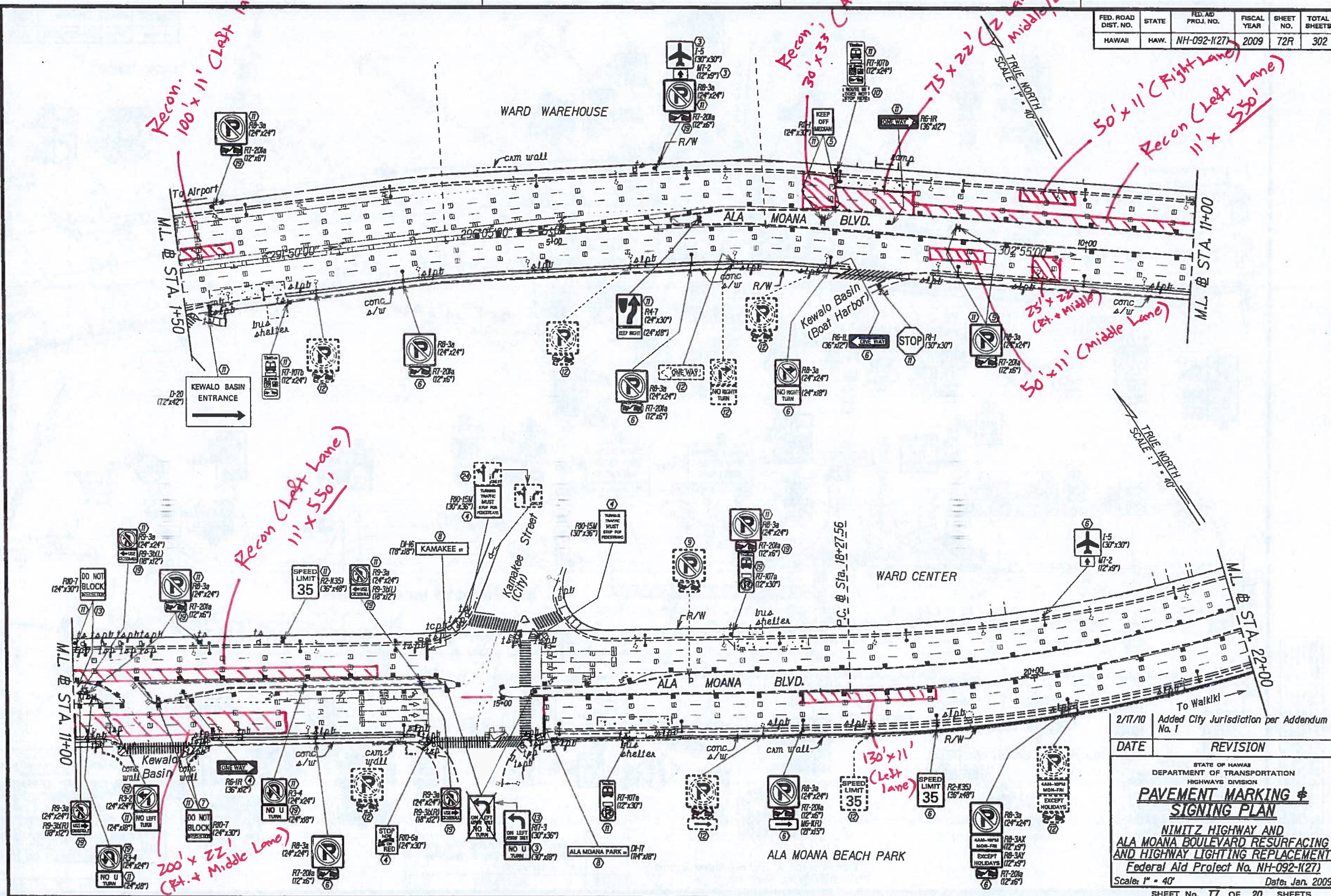
**PAVEMENT MARKING & SIGNING PLAN**

NIMITZ HIGHWAY AND  
ALA MOANA BOULEVARD RESURFACING  
AND HIGHWAY LIGHTING REPLACEMENT  
Federal Aid Project No. NH-092-1(27)

Scale: 1" = 40' Date: Jan. 2009  
SHEET No. T6 OF 20 SHEETS



| FED. ROAD DIST. NO. | STATE | FED. AID PROJ. NO. | FISCAL YEAR | SHEET NO. | TOTAL SHEETS |
|---------------------|-------|--------------------|-------------|-----------|--------------|
| HAWAII              | HAW.  | NH-092-1(27)       | 2009        | 72R       | 302          |

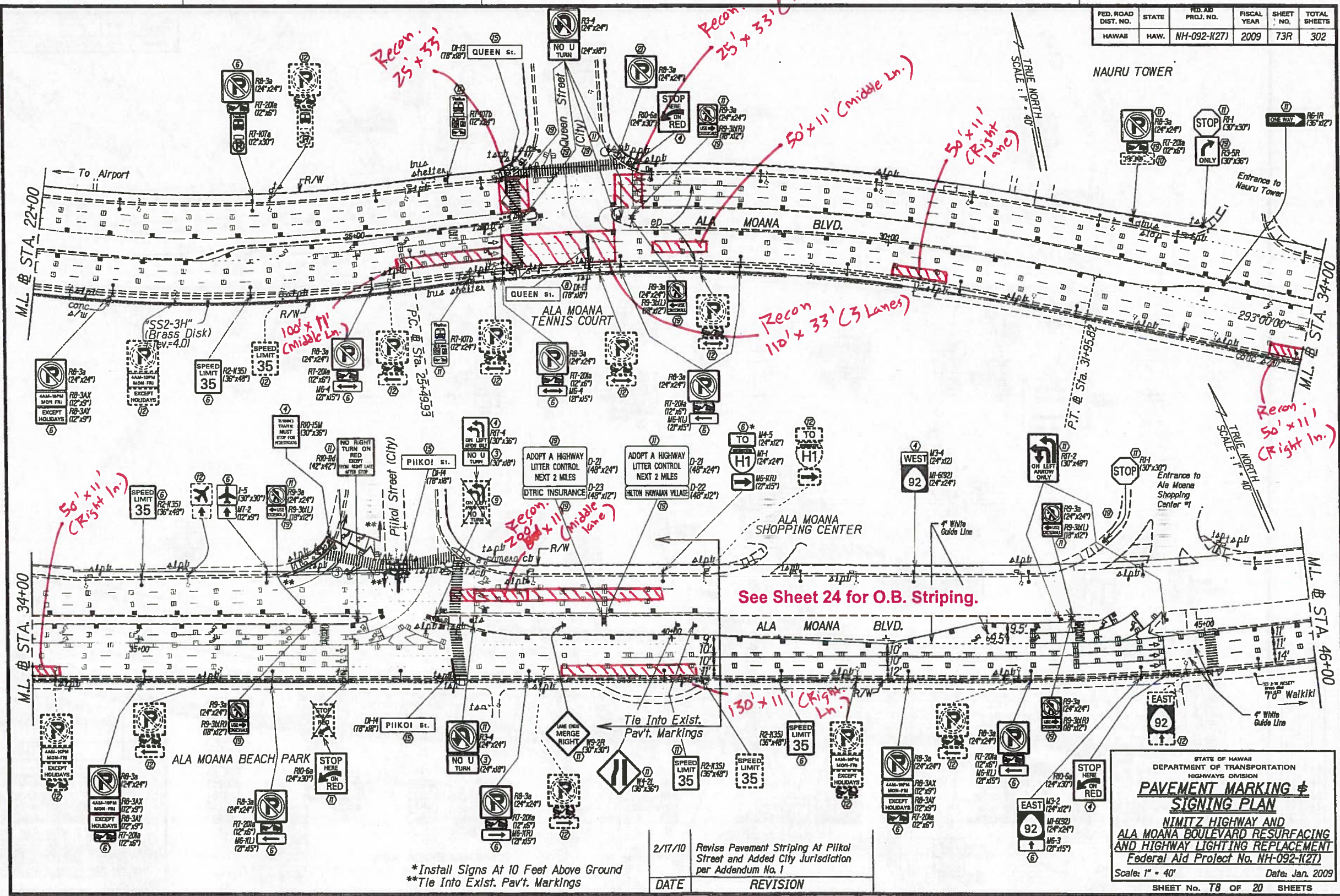


|             |         |
|-------------|---------|
| DATE        | 2/17/10 |
| DESIGNED BY | ...     |
| CHECKED BY  | ...     |
| IN CHARGE   | ...     |
| APPROVED BY | ...     |
| DATE        | 2/17/10 |
| DESIGNED BY | ...     |
| CHECKED BY  | ...     |
| IN CHARGE   | ...     |
| APPROVED BY | ...     |

|   |  |
|---|--|
| DATE  | 2/17/10                                    |
| REVISION  | Added City Jurisdiction per Addendum No. 1 |
| STATE OF HAWAII<br>DEPARTMENT OF TRANSPORTATION<br>HIGHWAYS DIVISION                      |  |
| <b>PAVEMENT MARKING &amp; SIGNING PLAN</b>  |  |
| NIMITZ HIGHWAY AND<br>ALA MOANA BOULEVARD RESURFACING<br>AND HIGHWAY LIGHTING REPLACEMENT |  |
| Federal Aid Project No. NH-092-1(27)  |  |
| Scale: 1" = 40'   | Date: Jan. 2009                            |
| SHEET No. 77 OF 20 SHEETS   |  |



| FED. ROAD DIST. NO. | STATE | FED. AID PROJ. NO. | FISCAL YEAR | SHEET NO. | TOTAL SHEETS |
|---------------------|-------|--------------------|-------------|-----------|--------------|
| HAWAII              | HAW.  | NH-092-1(27)       | 2009        | 73R       | 302          |



|   |         |
|---|---------|
| DESIGNED BY   | DATE    |
| CHECKED BY  | 1/23/09 |
| APPROVED BY   |         |
| NOTES   |         |
| 1. ALL WORK SHALL BE IN ACCORDANCE WITH THE LATEST EDITIONS OF THE HAWAIIAN STANDARD SPECIFICATIONS FOR ROAD AND BRIDGE CONSTRUCTION. |         |
| 2. ALL WORK SHALL BE IN ACCORDANCE WITH THE LATEST EDITIONS OF THE HAWAIIAN STANDARD SPECIFICATIONS FOR ROAD AND BRIDGE CONSTRUCTION. |         |

\*Install Signs At 10 Feet Above Ground  
 \*\*Tie Into Exist. Pav't. Markings



ALA MOANA SHOPPING CENTER

See Sheets 24 & 25 for O.B. Striping.

END PROJECT  
Nimitz Hwy & Ala Moana Blvd Resurfacing  
Atkinson Drive  
M.P. 8.53

2/4/10 Added City Jurisdiction and Traffic Review Branch Approval Signature

DATE REVISION

\* Install Sign(s) At 10 Feet Above Ground

Approved: \_\_\_\_\_  
CHIEF, TRAFFIC REVIEW BRANCH, DPP  
(For work within City R/W only)

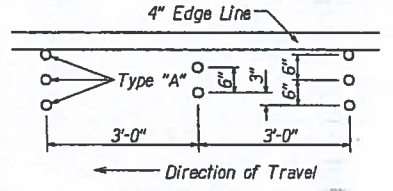
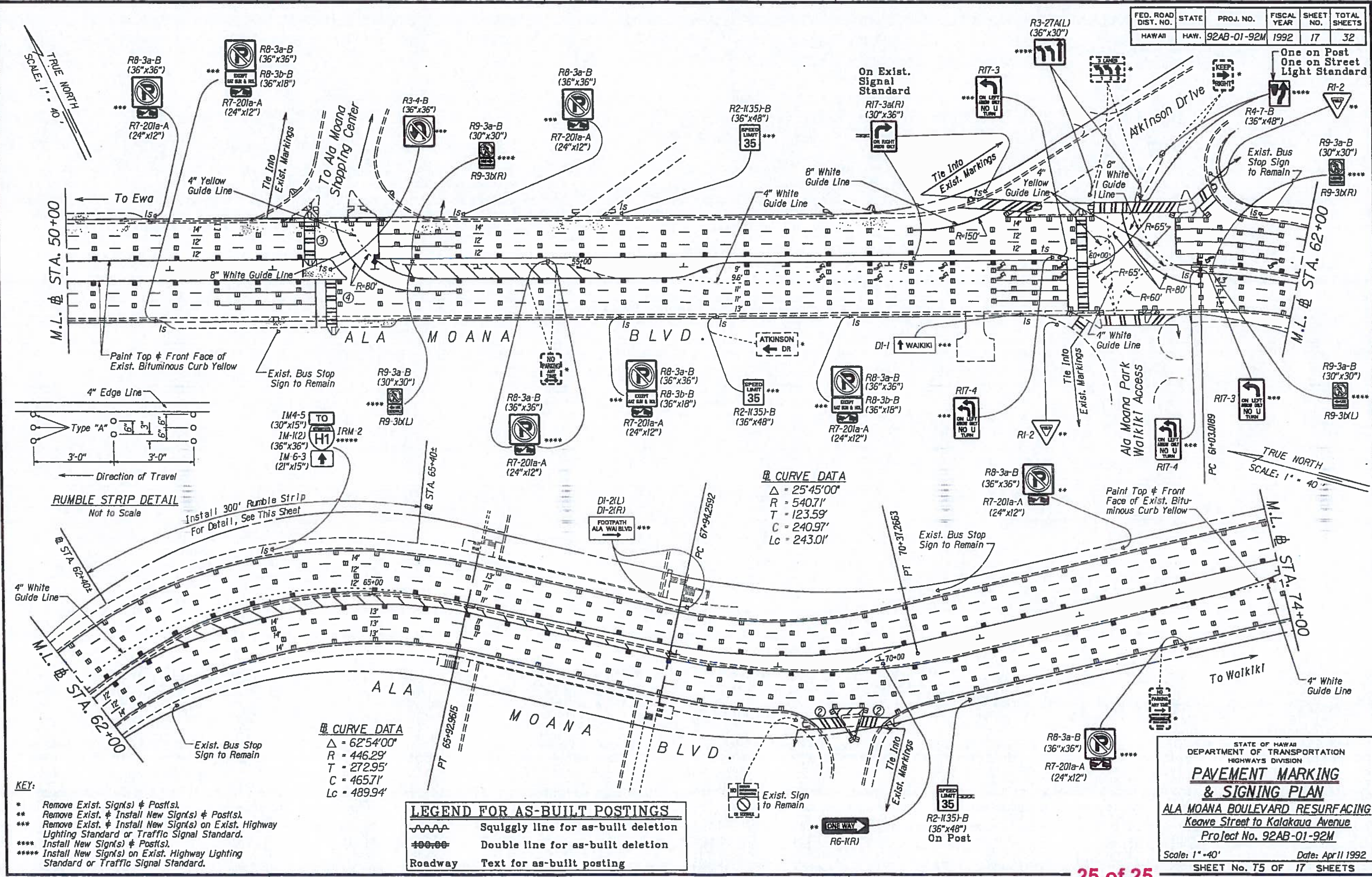
STATE OF HAWAII  
DEPARTMENT OF TRANSPORTATION  
HIGHWAYS DIVISION  
**PAVEMENT MARKING & SIGNING PLAN**  
NIMITZ HIGHWAY AND  
ALA MOANA BOULEVARD RESURFACING  
AND HIGHWAY LIGHTING REPLACEMENT  
Federal Aid Project No. NH-092-1(27)  
Scale: 1" = 40' Date: Jan. 2009  
SHEET No. 79 OF 20 SHEETS







| FED. ROAD DIST. NO. | STATE | PROJ. NO.   | FISCAL YEAR | SHEET NO. | TOTAL SHEETS |
|---------------------|-------|-------------|-------------|-----------|--------------|
| HAWAII              | HAW.  | 92AB-01-92M | 1992        | 17        | 32           |



**RUMBLE STRIP DETAIL**  
Not to Scale  
Install 300' Rumble Strip  
For Detail, See This Sheet

**Curve Data**  
 $\Delta = 25^\circ 45' 00''$   
 $R = 540.71'$   
 $T = 123.59'$   
 $C = 240.97'$   
 $L_c = 243.01'$

**Curve Data**  
 $\Delta = 62^\circ 54' 00''$   
 $R = 446.29'$   
 $T = 272.95'$   
 $C = 465.71'$   
 $L_c = 489.94'$

| LEGEND FOR AS-BUILT POSTINGS |                                     |
|------------------------------|-------------------------------------|
| ~~~~~                        | Squiggly line for as-built deletion |
| ====                         | Double line for as-built deletion   |
| Roadway                      | Text for as-built posting           |

- KEY:**
- \* Remove Exist. Sign(s) & Post(s).
  - \*\* Remove Exist. & Install New Sign(s) & Post(s).
  - \*\*\* Remove Exist. & Install New Sign(s) on Exist. Highway Lighting Standard or Traffic Signal Standard.
  - \*\*\*\* Install New Sign(s) & Post(s).
  - \*\*\*\*\* Install New Sign(s) on Exist. Highway Lighting Standard or Traffic Signal Standard.

STATE OF HAWAII  
DEPARTMENT OF TRANSPORTATION  
HIGHWAYS DIVISION

**PAVEMENT MARKING & SIGNING PLAN**

ALA MOANA BOULEVARD RESURFACING  
Keawe Street to Kalakaua Avenue  
Project No. 92AB-01-92M

Scale: 1" = 40' Date: April 1992  
SHEET No. 15 OF 17 SHEETS