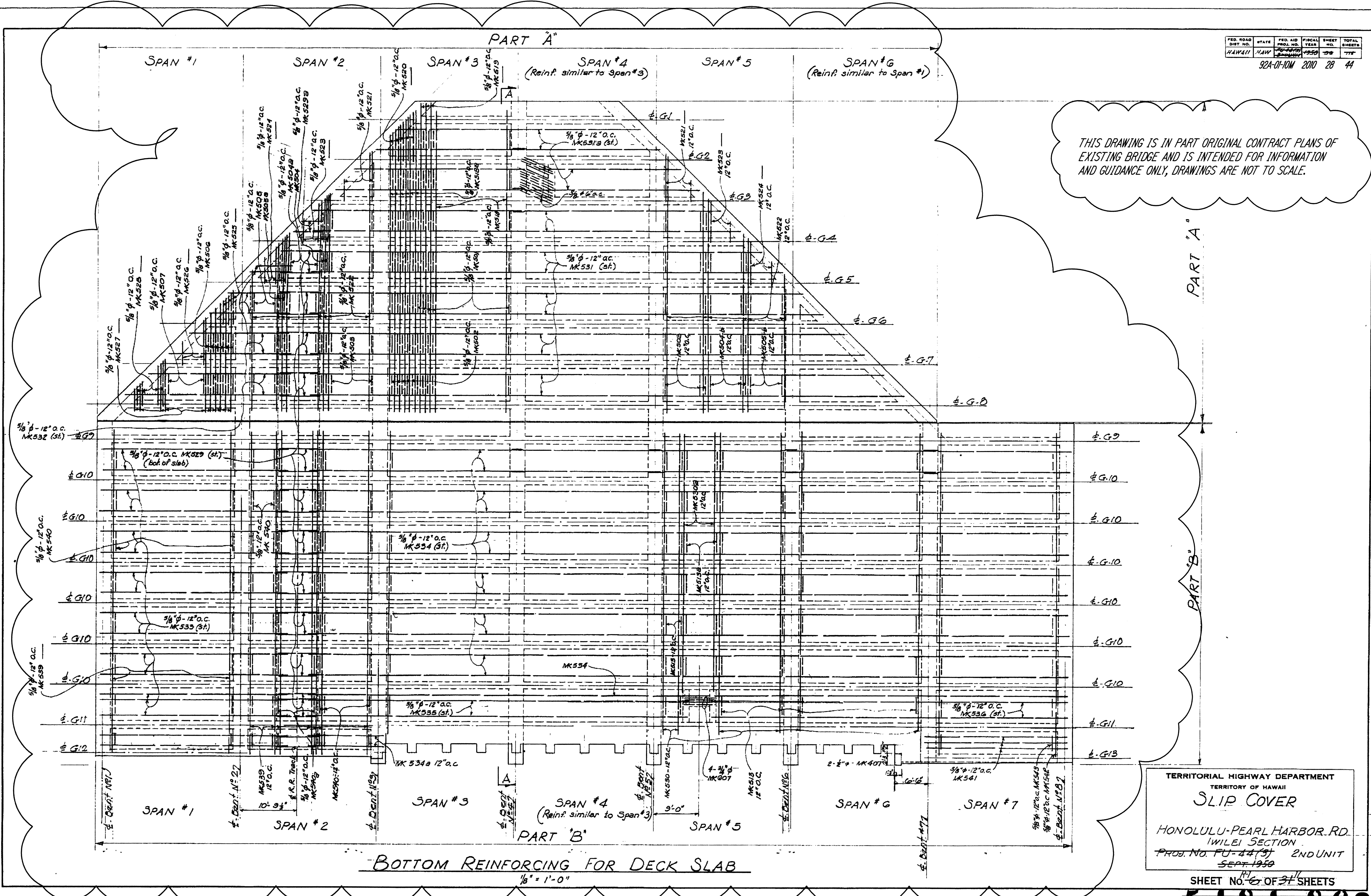


FED. ROAD DIST. NO.	STATE	FED. AID PROJ. NO.	FISCAL YEAR	SHEET NO.	TOTAL SHEETS
HAWAII	HAW	1955	1955	28	44

THIS DRAWING IS IN PART ORIGINAL CONTRACT PLANS OF EXISTING BRIDGE AND IS INTENDED FOR INFORMATION AND GUIDANCE ONLY, DRAWINGS ARE NOT TO SCALE.

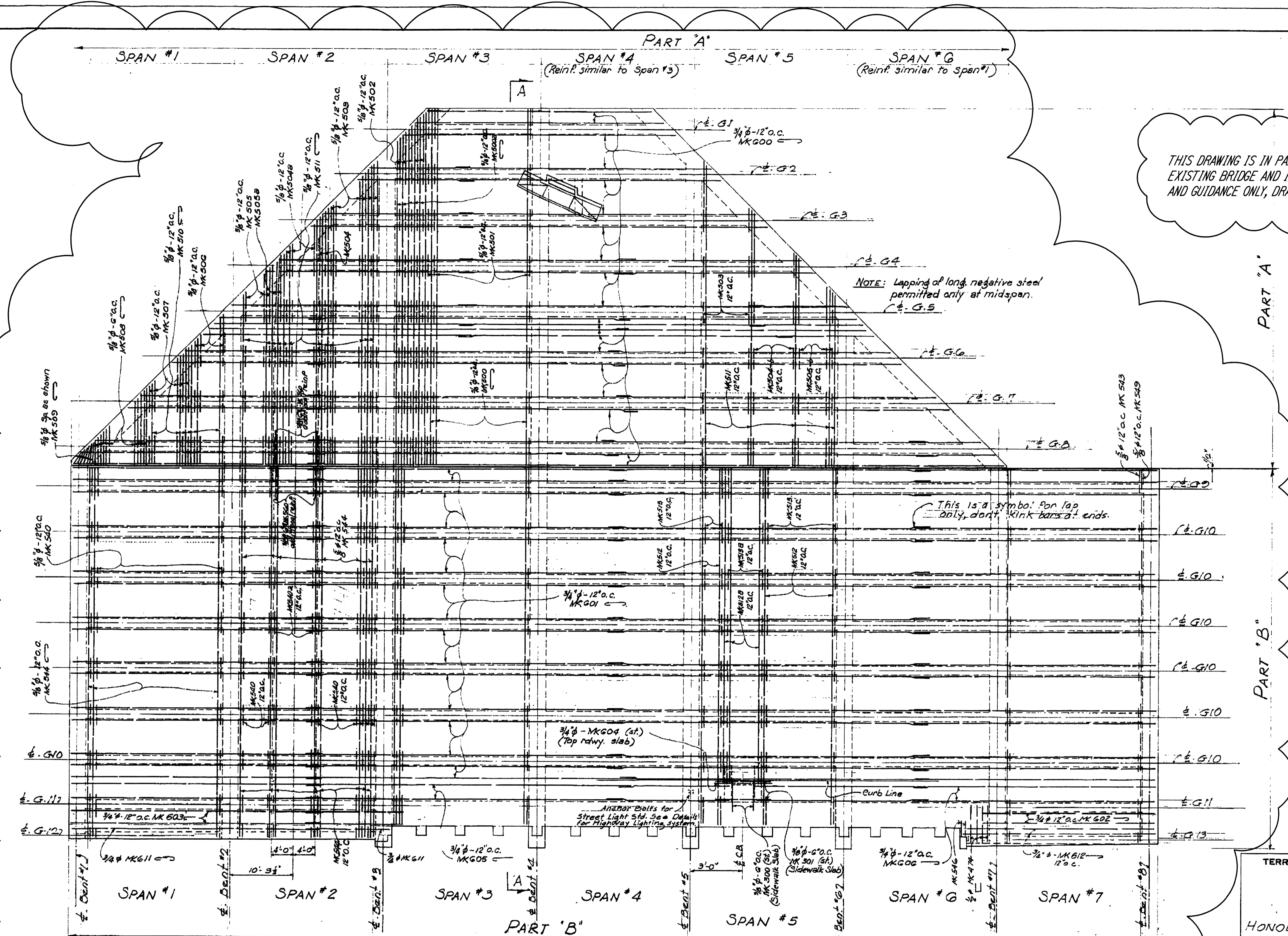


SURVEY PLOTTED BY: DATE: 1/15/58
 ORIGINAL PLAN DRAWN BY: J.E. 6/50
 TRACED BY: J.E. 6/50
 NOTE BOOK QUANTITIES CHECKED BY: J.E. 6/50
 RC. CHECKED BY: J.E. 6/50

TERRITORIAL HIGHWAY DEPARTMENT
 TERRITORY OF HAWAII
SLIP COVER
 HONOLULU-PEARL HARBOR RD.
 IWILEI SECTION
 PROJ. NO. FU-44(5) 2ND UNIT
 SEPT. 1958
 SHEET NO. 28 OF 44 SHEETS

5484-S628

FED. ROAD DIST. NO.	STATE	FED. AID PROJ. NO.	FISCAL YEAR	SHEET NO.	TOTAL SHEETS
HAWAII	14W	2000	1999	29	44



THIS DRAWING IS IN PART ORIGINAL CONTRACT PLANS OF EXISTING BRIDGE AND IS INTENDED FOR INFORMATION AND GUIDANCE ONLY, DRAWINGS ARE NOT TO SCALE.

DESIGNED BY: P. Beckwith
 DRAWN BY: A. Lee
 CHECKED BY: J. Lee
 DATE: 1/15/50
 SHEET NO. 29
 TOTAL SHEETS 44

TOP REINFORCING FOR DECK SLAB
 1/8" = 1'-0"

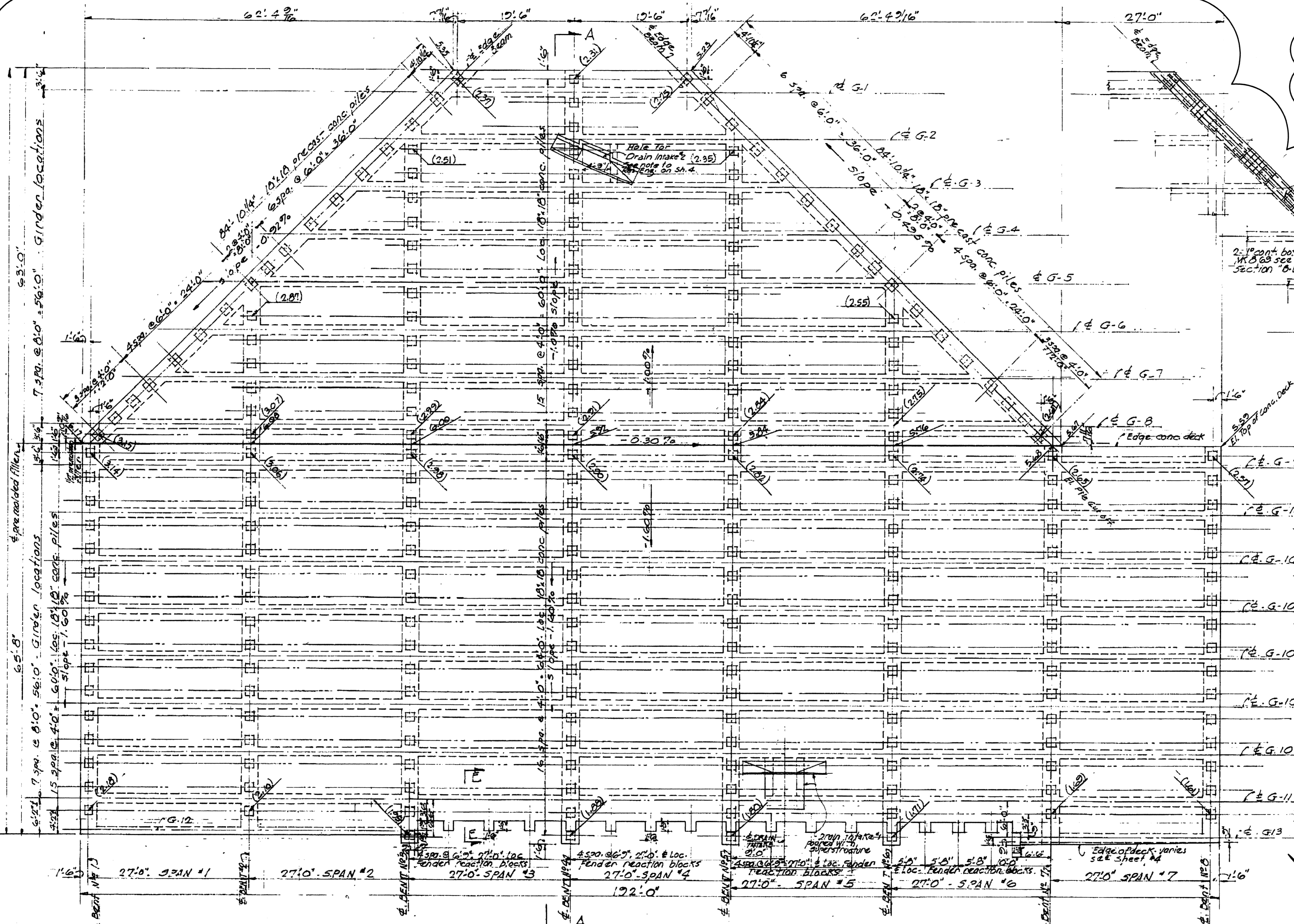
TERRITORIAL HIGHWAY DEPARTMENT
 TERRITORY OF HAWAII
SLIP COVER
 HONOLULU-PEARL HARBOR ROAD
 IWILEI SECTION
 PROJ. No. FU 44(9) 2ND UNIT
 Sept 1950
 SHEET NO. 5 OF 31 SHEETS

5484.8529

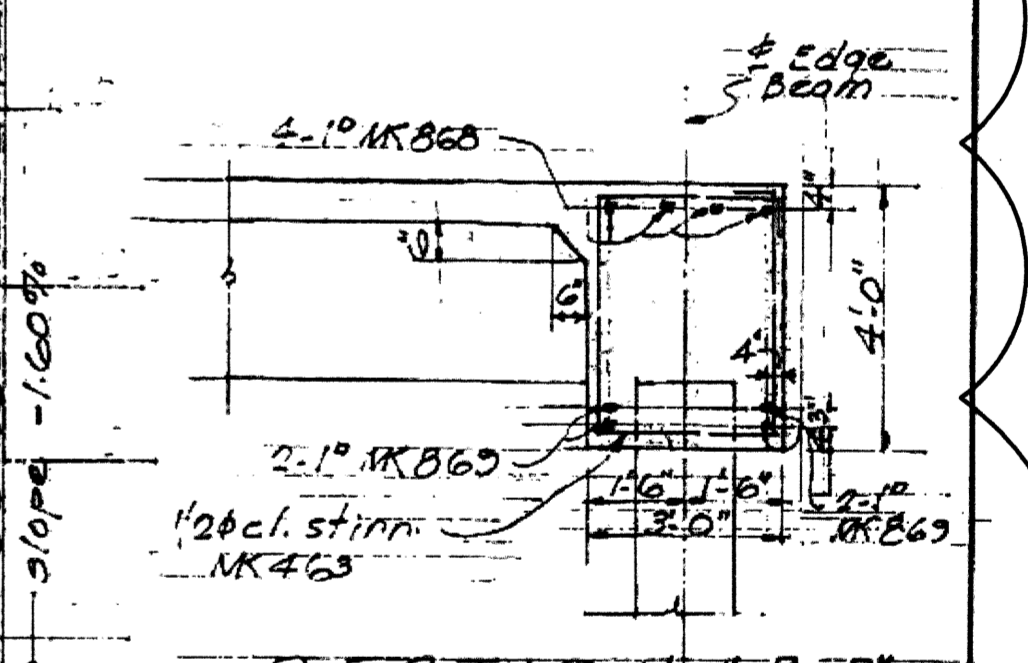
FED. ROAD DIST. NO.	STATE	FED. AID PROJ. NO.	FISCAL YEAR	SHEET NO.	TOTAL SHEETS
5484	HI	100-0-100	1950	31	44

Note: This sheet superseded by 5484.88A dated Sept. 17, 1951

THIS DRAWING IS IN PART ORIGINAL CONTRACT PLANS OF EXISTING BRIDGE AND IS INTENDED FOR INFORMATION AND GUIDANCE ONLY, DRAWINGS ARE NOT TO SCALE.



PLAN-TYP REINFORCING OF EDGE BEAM scale: 1/8"=1'-0"



SECTION "B-B" scale: 1/8"=1'-0"

NOTES

Elevations shown denote top of conc deck elevations.
 Elevations shown in (---) denote pile cutoff elevations.
 For details of sections "A-A" & "E-E" see 5th. No. 7.
 For conc. pile details - Sheet #29

TERRITORIAL HIGHWAY DEPARTMENT TERRITORY OF HAWAII

SLIP COVER

HONOLULU-PEARL HARBOR RD.
 WILEI SECTION
 Proj. No. FU-44(3) 2ND UNIT
 SEPT. 1950

SHEET NO. 31 OF 31 SHEETS

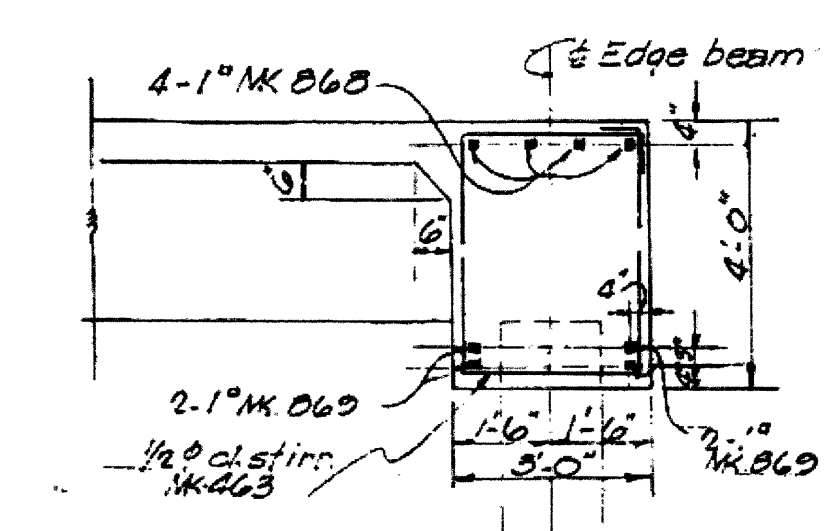
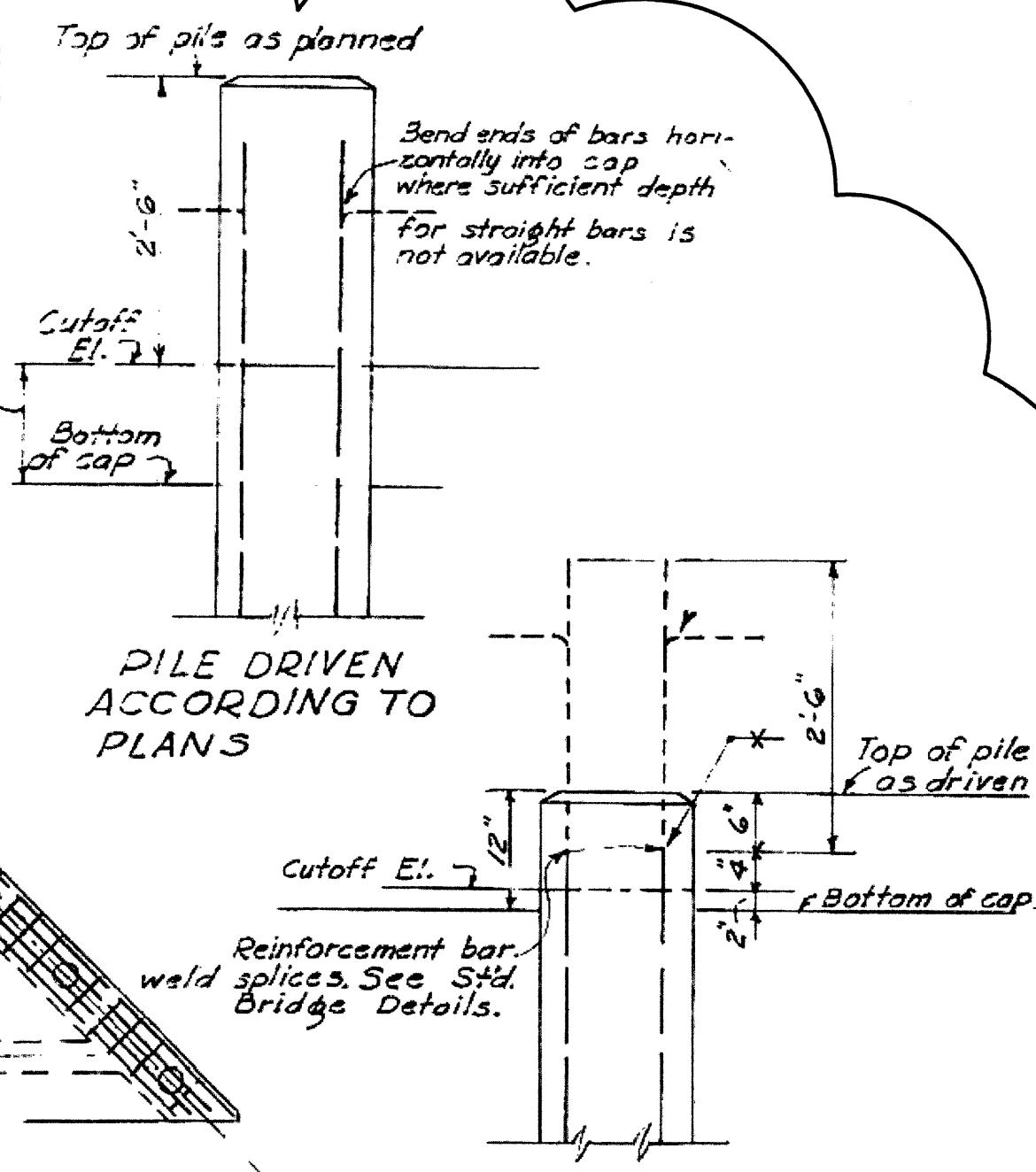
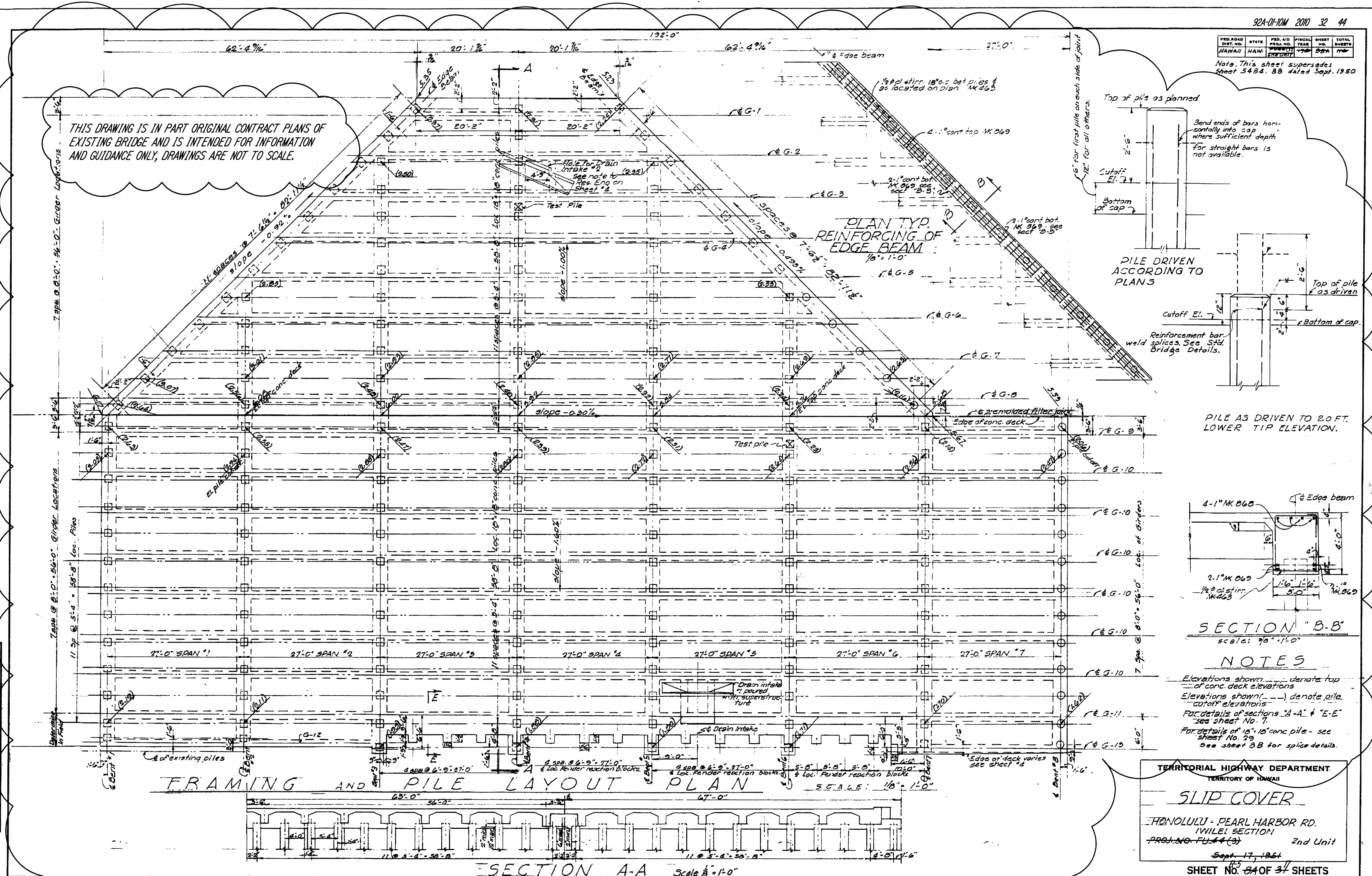
5484.88 31

DATE	3/50
DESIGNED BY	A. J. ...
CHECKED BY	...
QUANTITIES CHECKED BY	...
NOTE BOOK NO.	...

FED. ROAD DIST. NO.	STATE	FED. AID PROJ. NO.	FISCAL YEAR	SHEET NO.	TOTAL SHEETS
HAWAII	HAW.	195-031	1954	32	44

Note: This sheet supersedes sheet 5484.88 dated Sept. 1950

THIS DRAWING IS IN PART ORIGINAL CONTRACT PLANS OF EXISTING BRIDGE AND IS INTENDED FOR INFORMATION AND GUIDANCE ONLY, DRAWINGS ARE NOT TO SCALE.



NOTES

- Elevations shown denote top of conc. deck elevations
- Elevations shown (---) denote pile cutoff elevations
- For details of sections 'A-A' & 'E-E' see sheet No. 7.
- For details of 15" x 18" conc. pile - see sheet No. 29
- See sheet 8B for splice details.

TERRITORIAL HIGHWAY DEPARTMENT
TERRITORY OF HAWAII

SLIP COVER

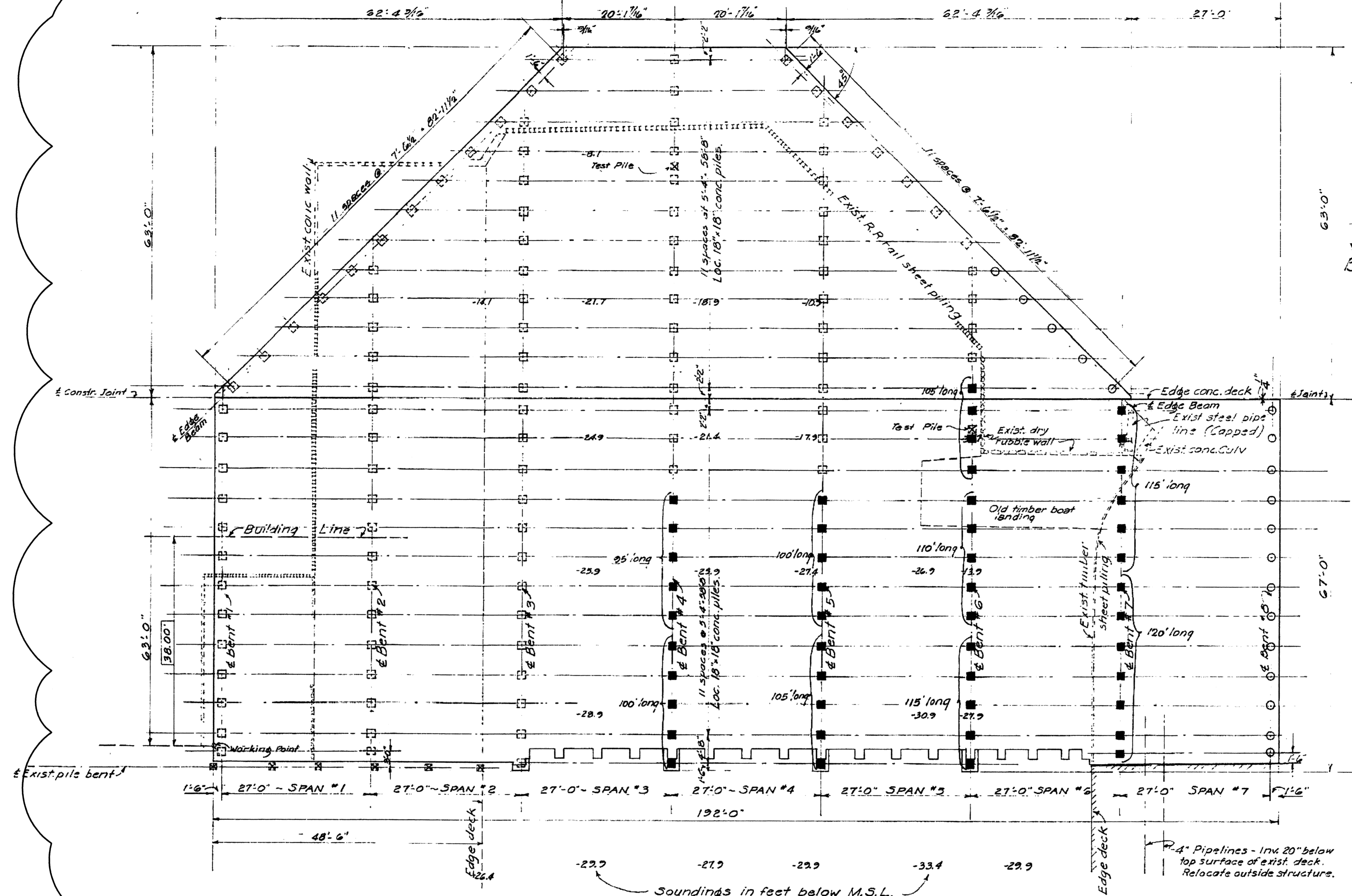
HONOLULU - PEARL HARBOR RD.
IWILEI SECTION
PROJ. NO. FU-44(3) 2nd Unit

Sept. 17, 1954

SHEET NO. 84 OF 37 SHEETS

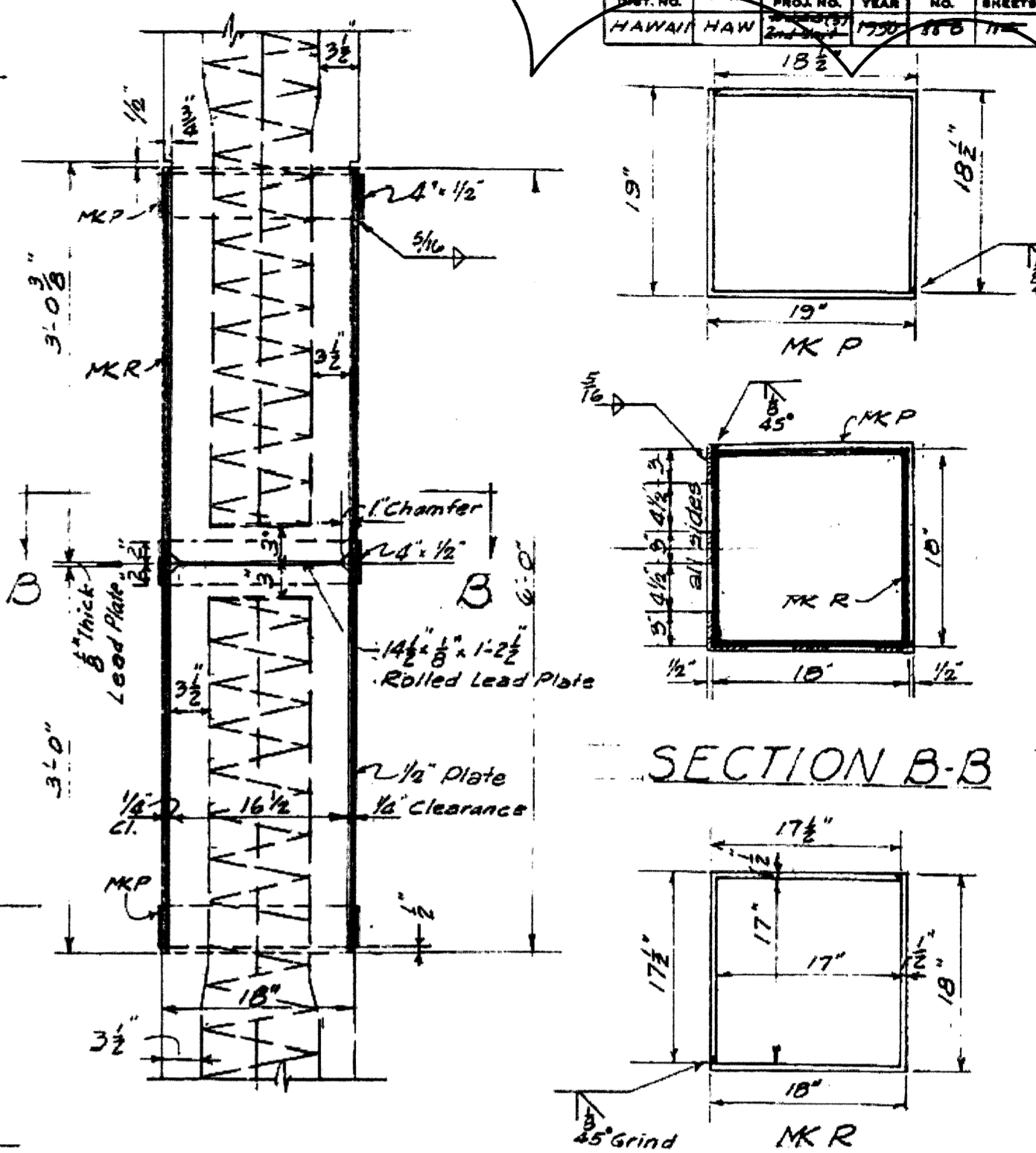
ORIGINAL PLAN
DRAWN BY
CHECKED BY
DATE

FED. ROAD DIST. NO.	STATE	FED. AID PROJ. NO.	FISCAL YEAR	SHEET NO.	TOTAL SHEETS
HAWAII HAW.	HAW.	1750	1950	18 B	17



ITEMIZED PILING PLAN
1" = 10'-0"

- 125 single piles - 18" x 18" x 90'-0" long.
- 47 spliced precast concrete piles (60' bottom, varying top)
- 18 Raymond Pipe Step Taper Piles (Total length 115')
- 170 p. Total Piles



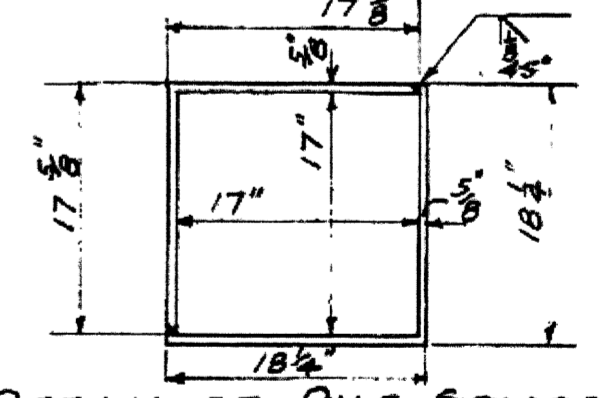
SECTION B-B

PILE SPLICE
1" = 1'-0"

Note: The Raymond shell portions of all Step Taper Piles shall be reinforced with a cage of 4 #1 bars wrapped with No. 3 wire at 4" pitch and extending 2'-0" into cap.

Raymond Pipe Step Taper Piles.
18 p. of 83'-0" long pipe { this is based on 92'-0" shell with 8' spare for emergencies

Spliced Precast Concrete Piles.
5 p. 95'-0" Total Length
10 - 100'-0"
9 - 105'-0"
5 - 110'-0"
11 - 115'-0"
7 - 120'-0"
87 p. Total
Bottom length of all piles 60'-0"



DETAIL OF PILE SPLICE FOR 5/8" PLATE
1" = 1'-0"
This splice shall have no rings, MK P.
(Note: Sufficient number of 5/8" plates not available.)

DESIGNED BY	DATE
DRAWN BY	
CHECKED BY	
IN CHARGE	
APPROVED BY	
DATE	

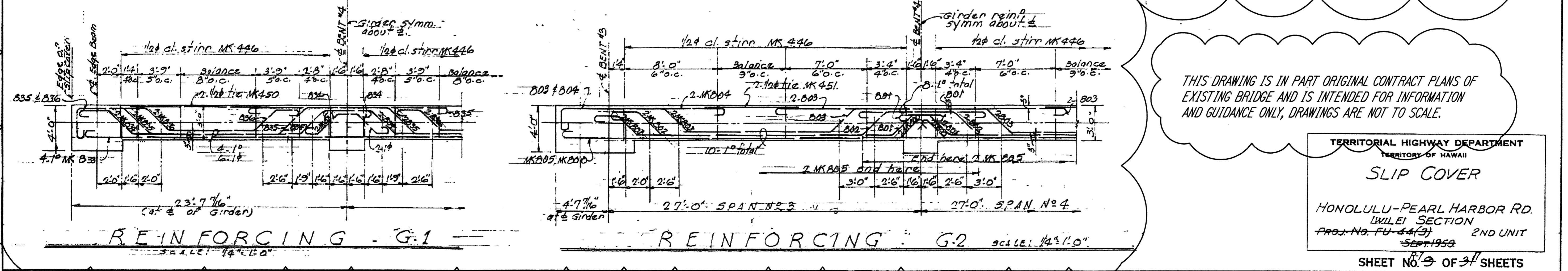
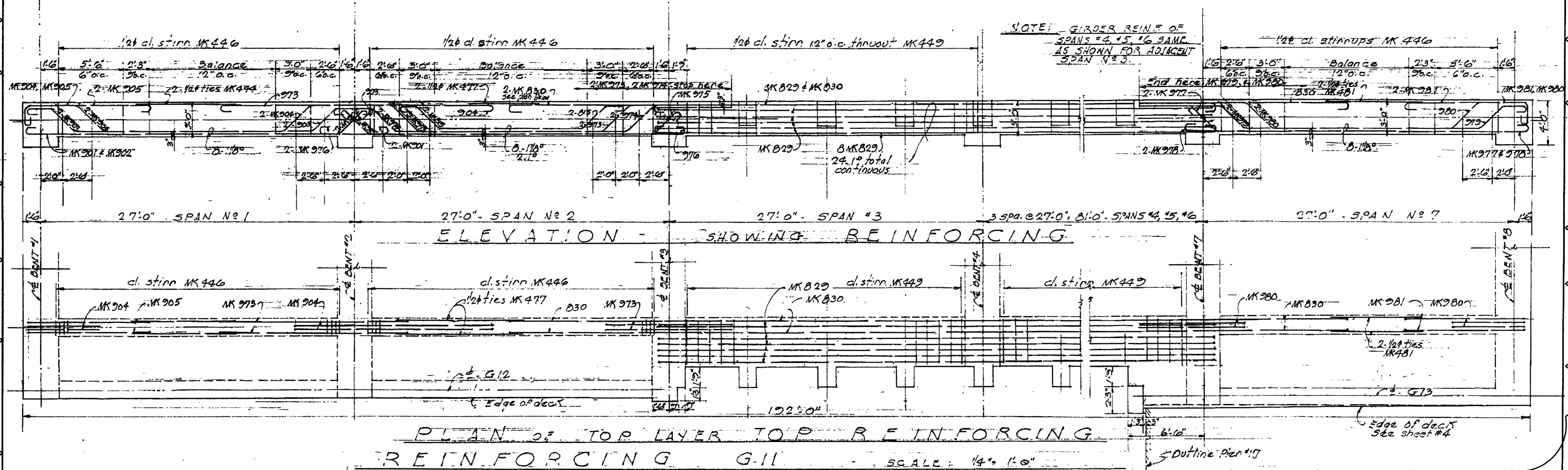
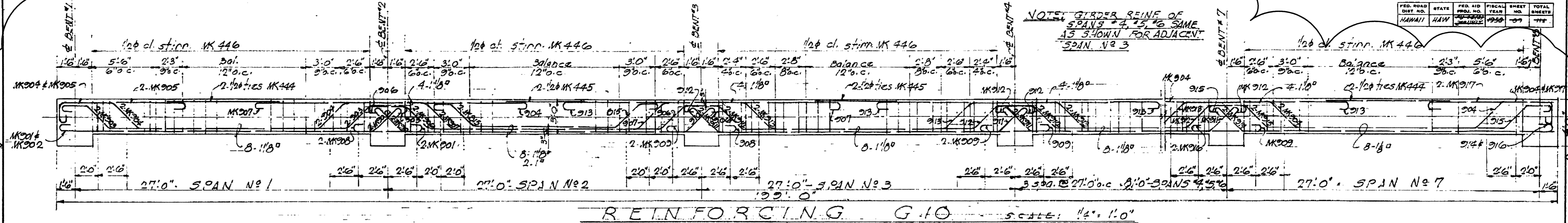
THIS DRAWING IS IN PART ORIGINAL CONTRACT PLANS OF EXISTING BRIDGE AND IS INTENDED FOR INFORMATION AND GUIDANCE ONLY, DRAWINGS ARE NOT TO SCALE.

Note! This sheet shows the revised piling layout and supersedes pile layout shown on sheet 5484.88 dated Sept. 1950.

TERRITORIAL HIGHWAY DEPARTMENT
TERRITORY OF HAWAII
SLIP COVER
HONOLULU - PEARL HARBOR RD
IWI LEI SECTION
Proj. No. PU-44(3) 2ND UNIT
SEP 17, 1951

SHEET NO. 38 OF 37 SHEETS

FED. ROAD DIST. NO.	STATE	FED. AID PROJ. NO.	FISCAL YEAR	SHEET NO.	TOTAL SHEETS
HAWAII	HAW	304-10-10	1950	34	44



THIS DRAWING IS IN PART ORIGINAL CONTRACT PLANS OF EXISTING BRIDGE AND IS INTENDED FOR INFORMATION AND GUIDANCE ONLY, DRAWINGS ARE NOT TO SCALE.

TERRITORIAL HIGHWAY DEPARTMENT
 TERRITORY OF HAWAII
SLIP COVER
 HONOLULU-PEARL HARBOR RD.
 IWILEI SECTION
 PROJ. NO. FH-44(3) 2ND UNIT
 SEPT. 1950
 SHEET NO. 3 OF 31 SHEETS

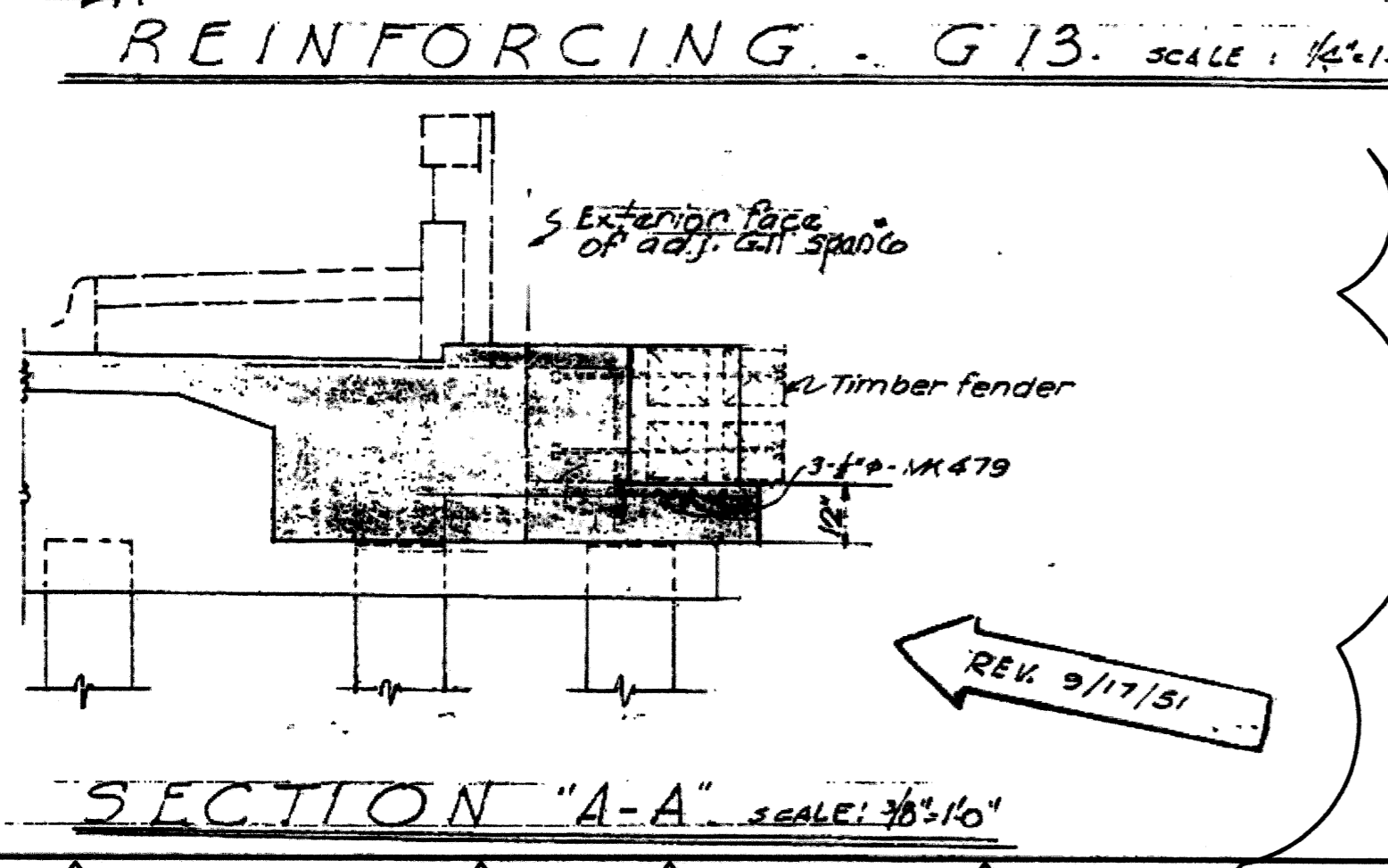
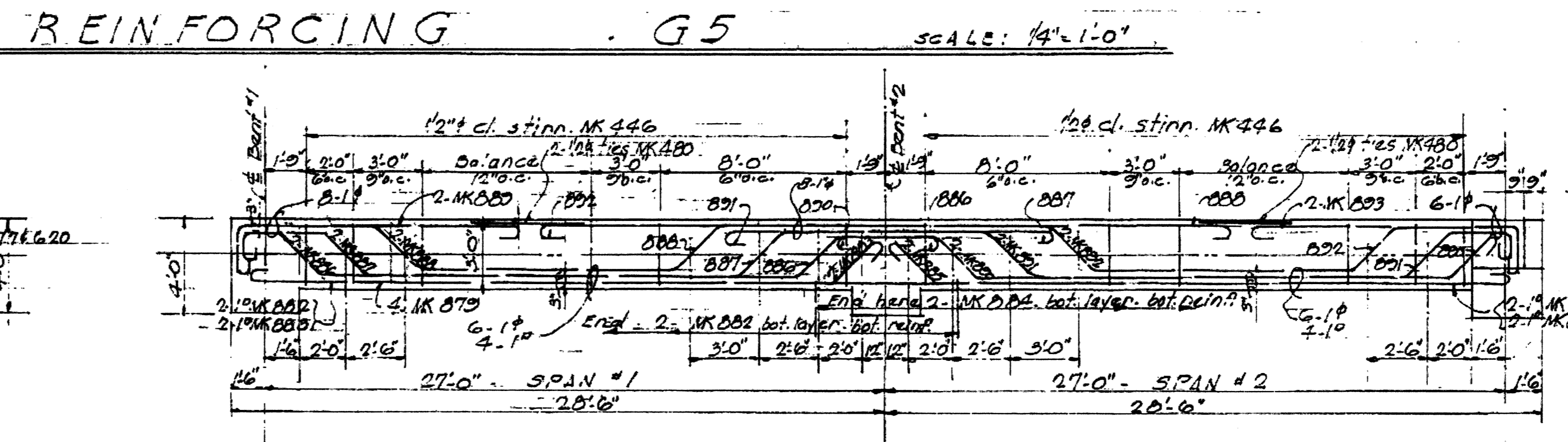
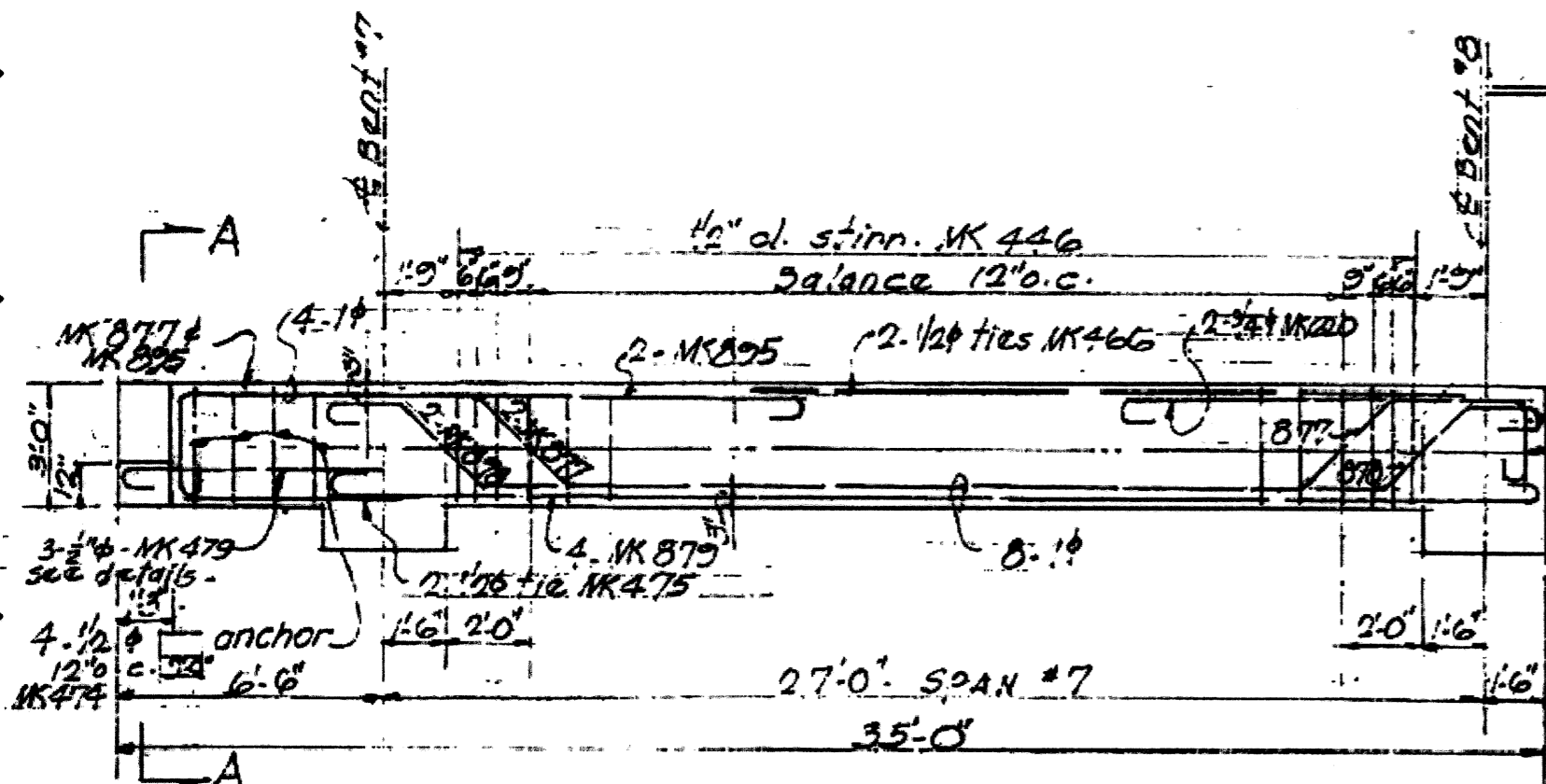
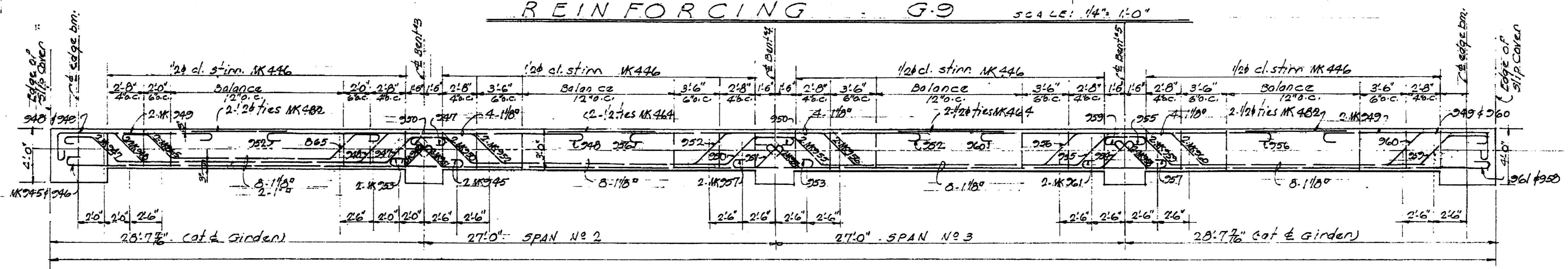
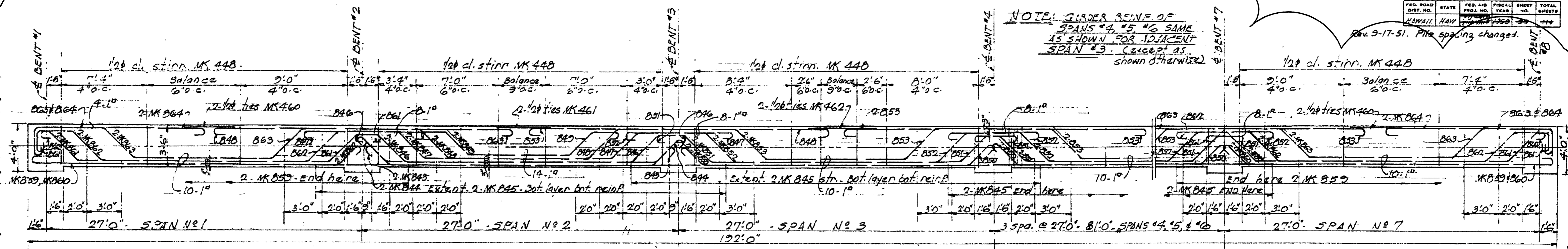
5484.8934

DESIGNED BY: [Signature]
 CHECKED BY: [Signature]
 DATE: [Date]

FED. ROAD DIST. NO.	STATE	FED. AID PROJ. NO.	FISCAL YEAR	SHEET NO.	TOTAL SHEETS
HAWAII	HAW	1950	1950	35	44

Rev. 9-17-51. Pile spacing changed.

NOTE: GIRDER BEING OF SPANS #4, #5, #6 SAME AS SHOWN FOR ADJACENT SPAN #3. (EXCEPT AS SHOWN OTHERWISE)



THIS DRAWING IS IN PART ORIGINAL CONTRACT PLANS OF EXISTING BRIDGE AND IS INTENDED FOR INFORMATION AND GUIDANCE ONLY; DRAWINGS ARE NOT TO SCALE.

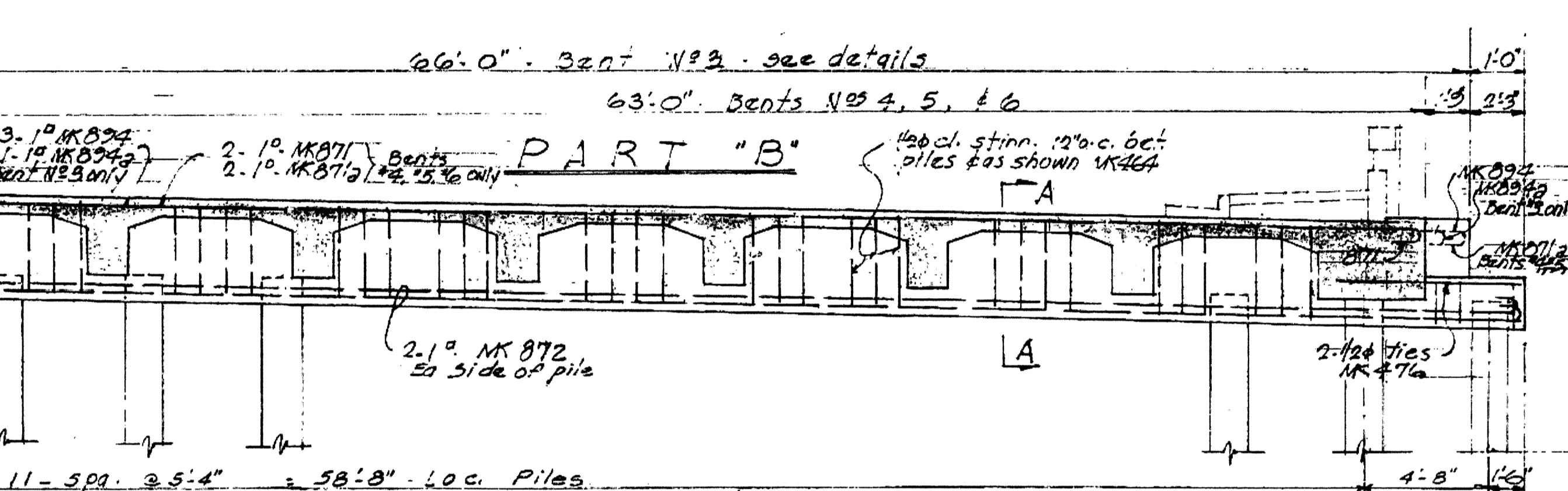
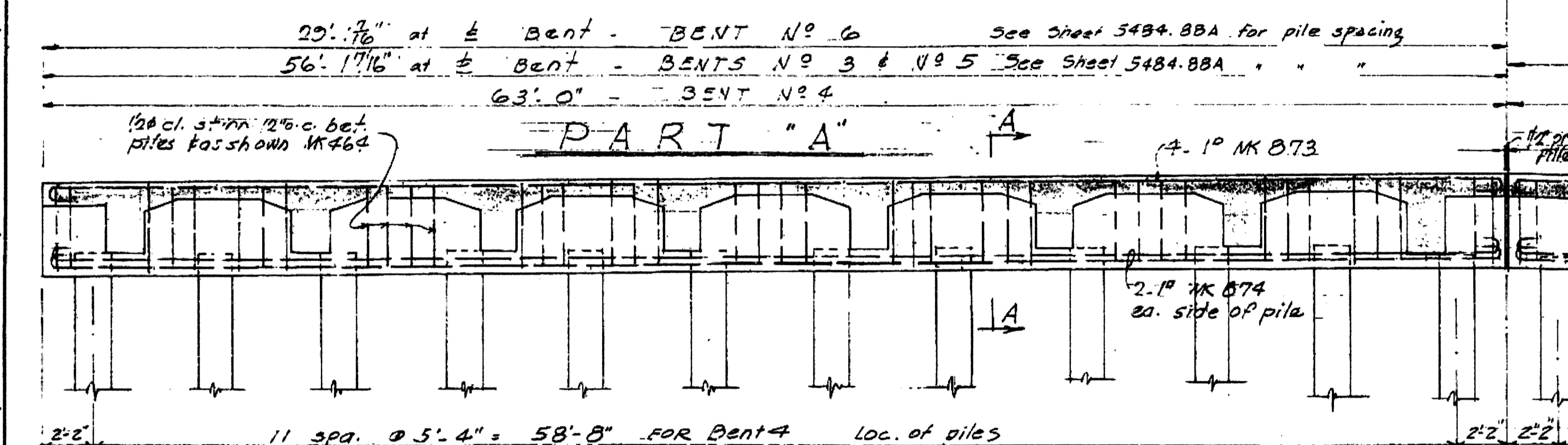
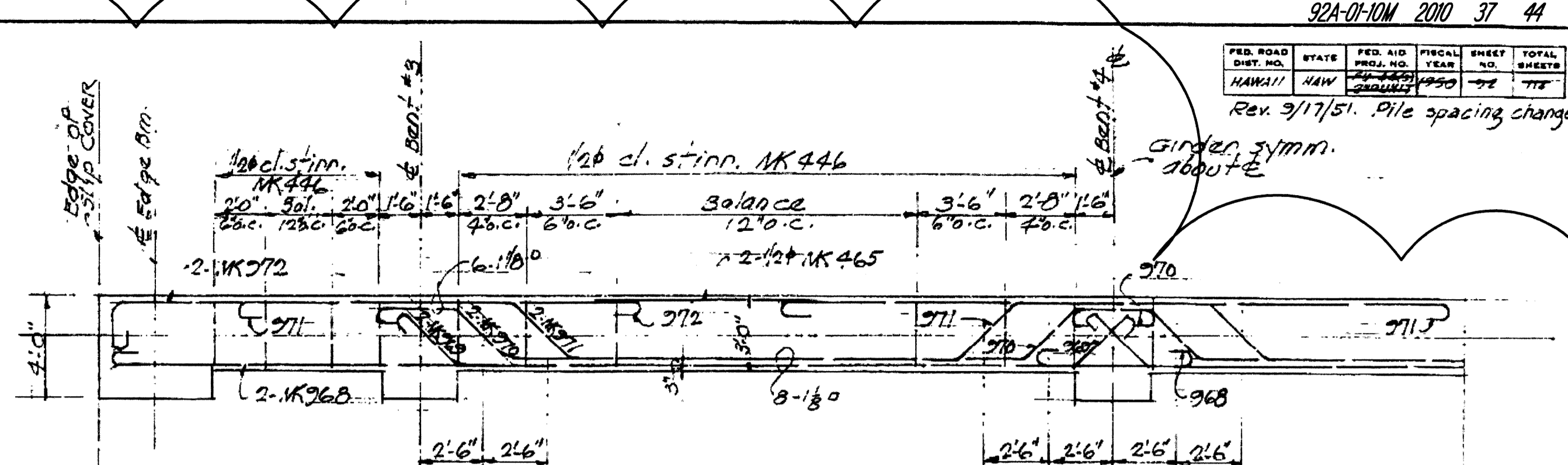
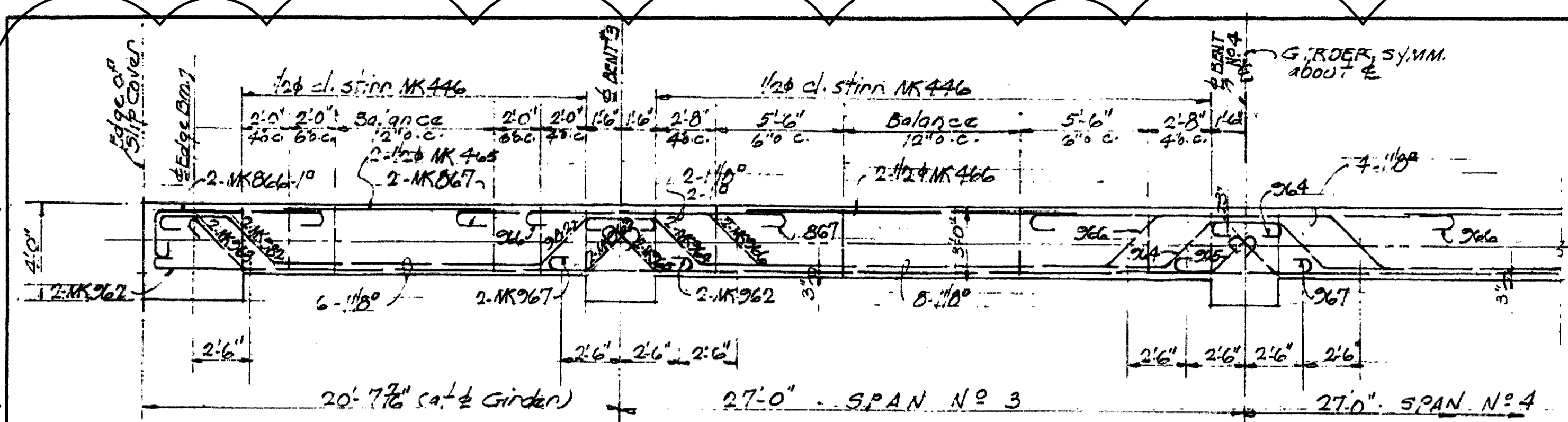
TERRITORIAL HIGHWAY DEPARTMENT
TERRITORY OF HAWAII
SLIP COVER
HONOLULU-PEARL HARBOR RD.
IWILEI SECTION
PROJ. NO. FH 44(9) END UNIT
SEPT. 1950
SHEET NO. 10 OF 31 SHEETS

5484.9035

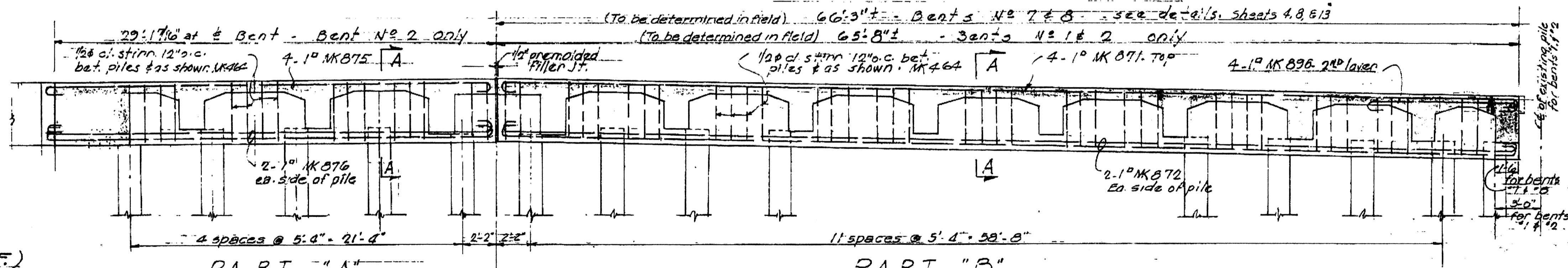
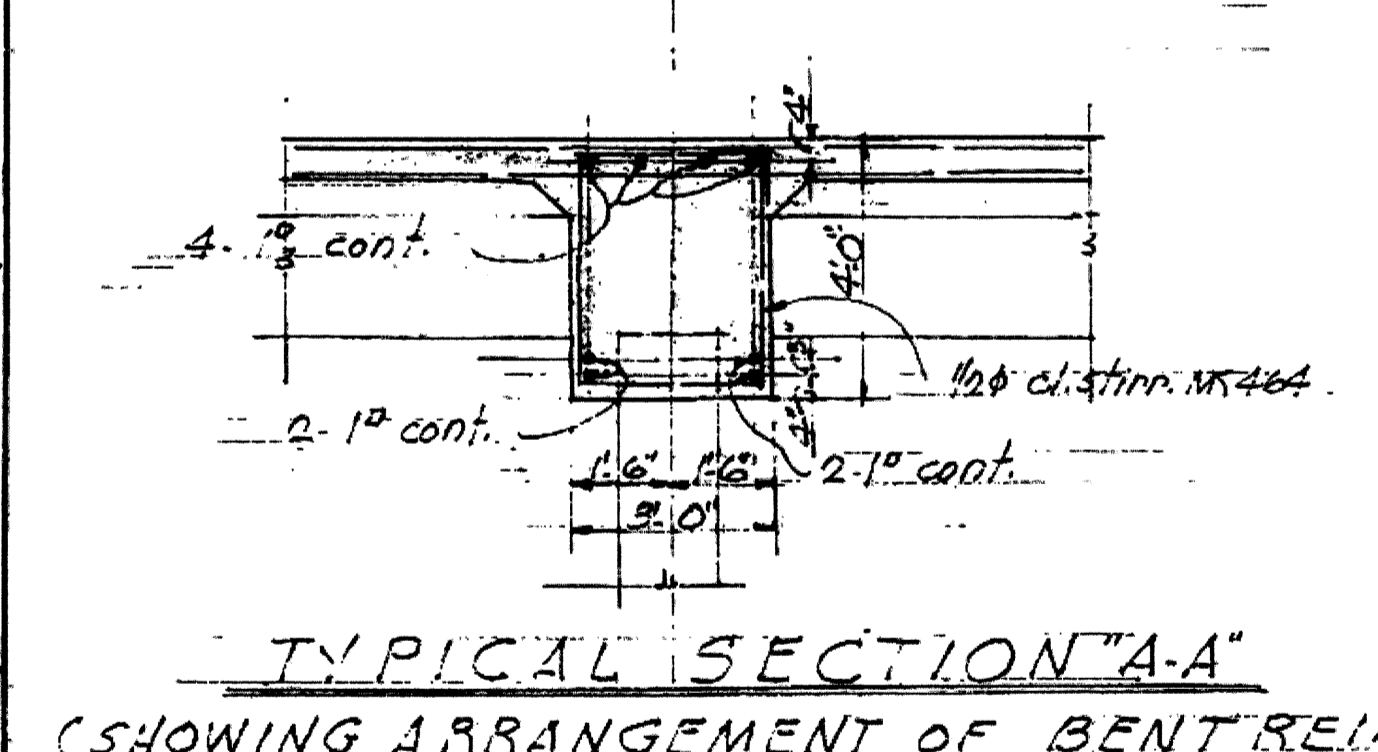
DESIGNED BY: [Name]
CHECKED BY: [Name]
DATE: [Date]

FED. ROAD DIST. NO.	STATE	FED. AID PROJ. NO.	FISCAL YEAR	SHEET NO.	TOTAL SHEETS
HAWAII	HAW	195-00000	1950	37	44

Rev. 9/17/51. Pile spacing changed



REINFORCING BENT N° 4 AS SHOWN - SCALE: 1/4" = 1'-0"
(REINFORCING FOR BENTS NOS. 3, 5, 6 SIMILAR - EXCEPT AS OTHERWISE NOTED)



REINFORCING BENT N° 2 AS SHOWN - SCALE: 1/4" = 1'-0"
(REINFORCING FOR BENT NOS. 1, 7, 8 SIMILAR - EXCEPT AS OTHERWISE NOTED)

THIS DRAWING IS IN PART ORIGINAL CONTRACT PLANS OF EXISTING BRIDGE AND IS INTENDED FOR INFORMATION AND GUIDANCE ONLY, DRAWINGS ARE NOT TO SCALE.

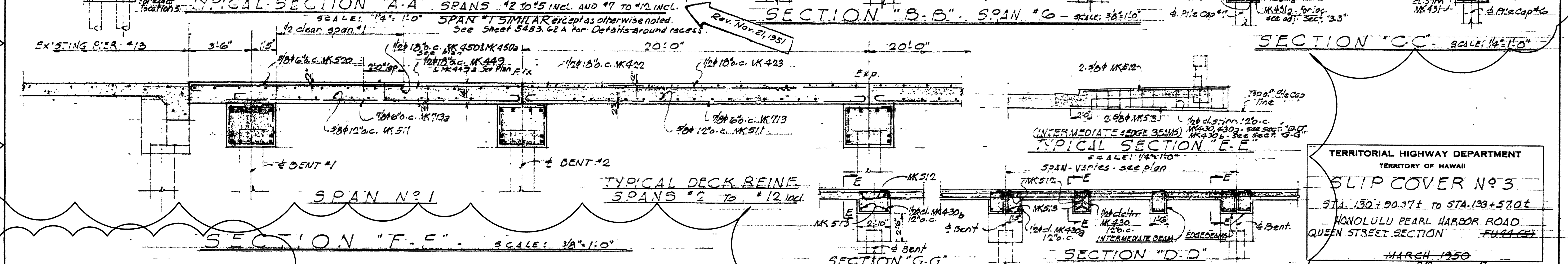
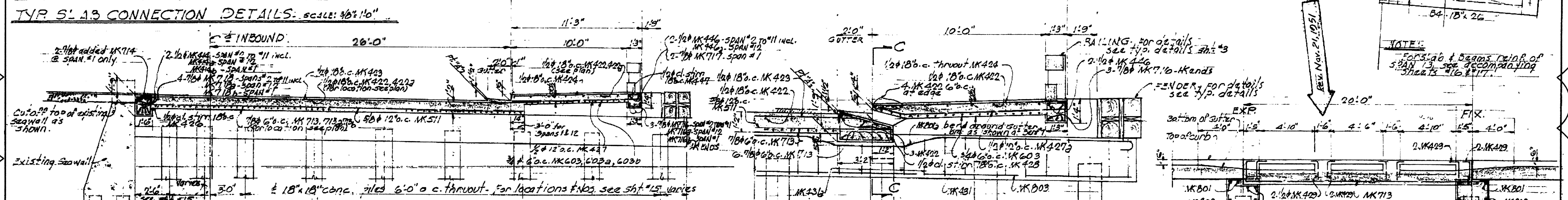
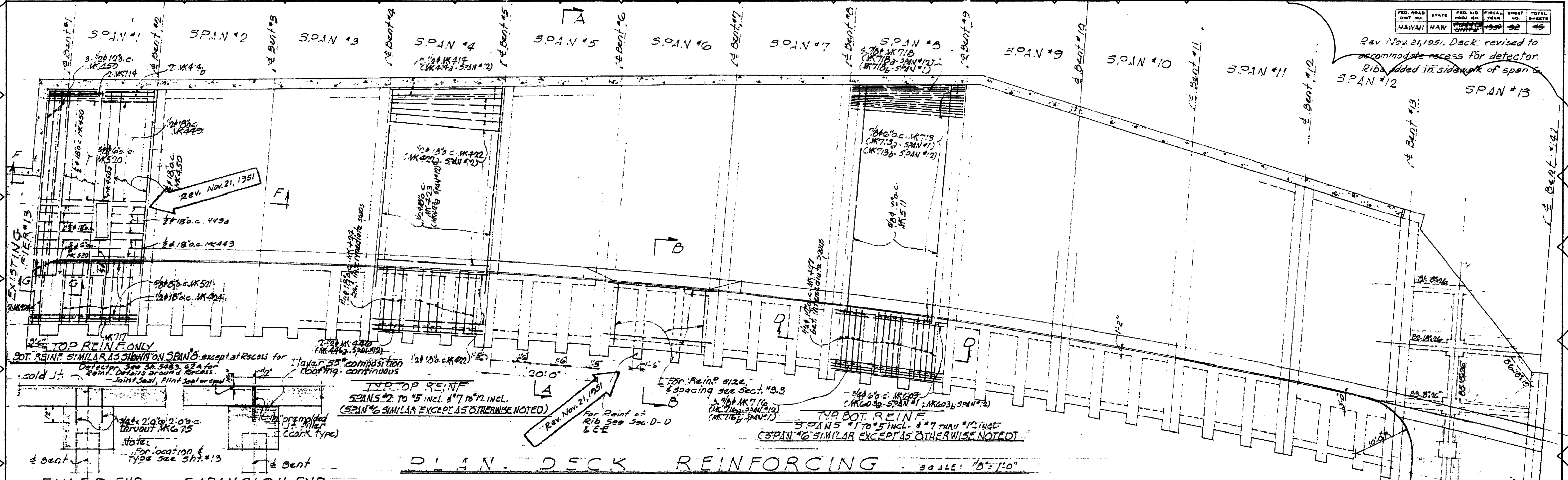
TERRITORIAL HIGHWAY DEPARTMENT
TERRITORY OF HAWAII
SLIP COVER
HONOLULU-PEARL HARBOR RD.
IWILEI SECTION
PROJ. NO. FU 44(3) 2ND UNIT
SEPT. 1950
SHEET NO. 12 OF 31 SHEETS

5484.9237

DATE: 9/17/51
DRAWN BY: [Signature]
CHECKED BY: [Signature]

FED. ROAD DIST. NO.	STATE	FED. AID PROJ. NO.	FISCAL YEAR	SHEET NO.	TOTAL SHEETS
HAWAII	HAW	1950-1951	1950	62	75

Rev Nov 21, 1951. Deck revised to accommodate recess for detector. Ribs added in sidewalk of spans 6, SPAN #12 SPAN #13



TERRITORIAL HIGHWAY DEPARTMENT
TERRITORY OF HAWAII
SLIP COVER NO. 3
STA. 130+90.37 ± TO STA. 139+57.0 ±
HONOLULU PEARL HARBOR ROAD
QUEEN STREET SECTION - FULL (57)
MARCH 1950
SHEET NO. 44 OF 27 SHEETS

DRAWN BY: [Name]
 CHECKED BY: [Name]
 DATE: [Date]
 ORIGINAL PLAN NO. [Number]
 REVISION NO. [Number]

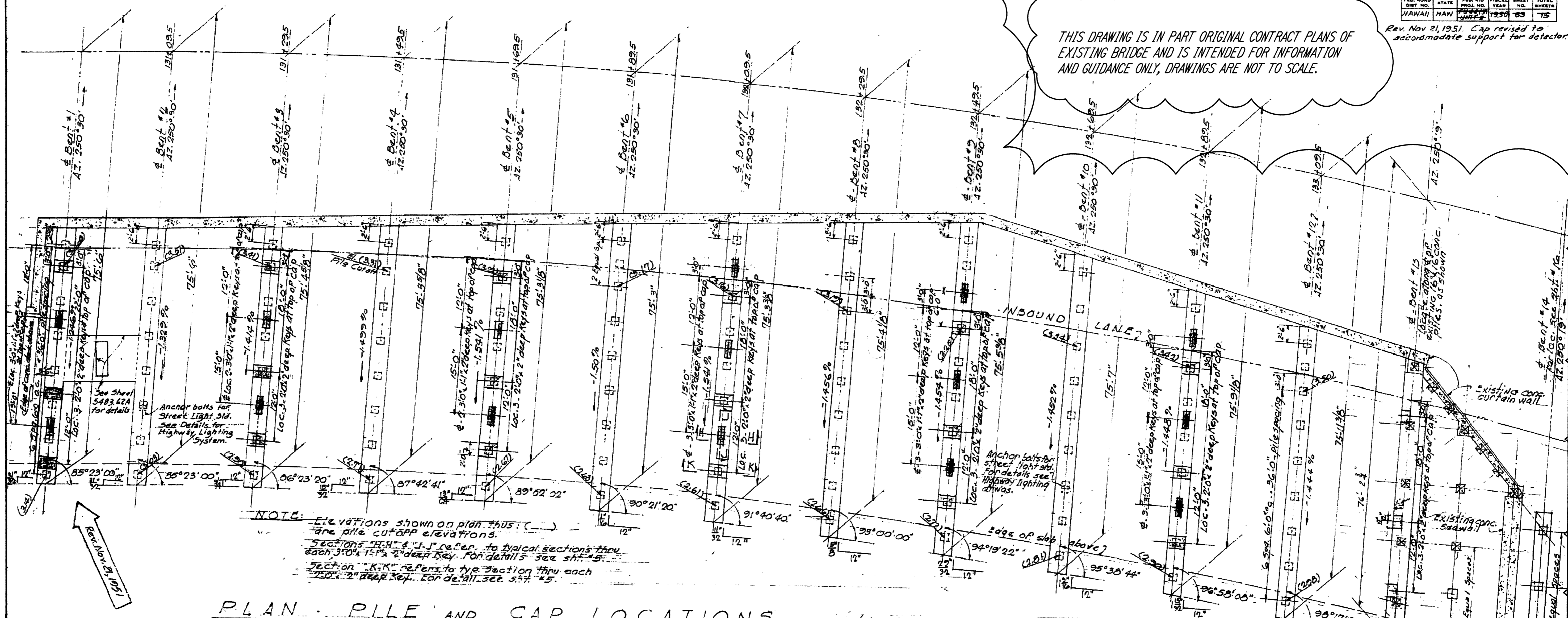
THIS DRAWING IS IN PART ORIGINAL CONTRACT PLANS OF EXISTING BRIDGE AND IS INTENDED FOR INFORMATION AND GUIDANCE ONLY, DRAWINGS ARE NOT TO SCALE.

5483.6-39

FED. ROAD DIST. NO.	STATE	FED. AID PROJ. NO.	FISCAL YEAR	SHEET NO.	TOTAL SHEETS
HAWAII	HAWAII	10-3-30	1959	83	75

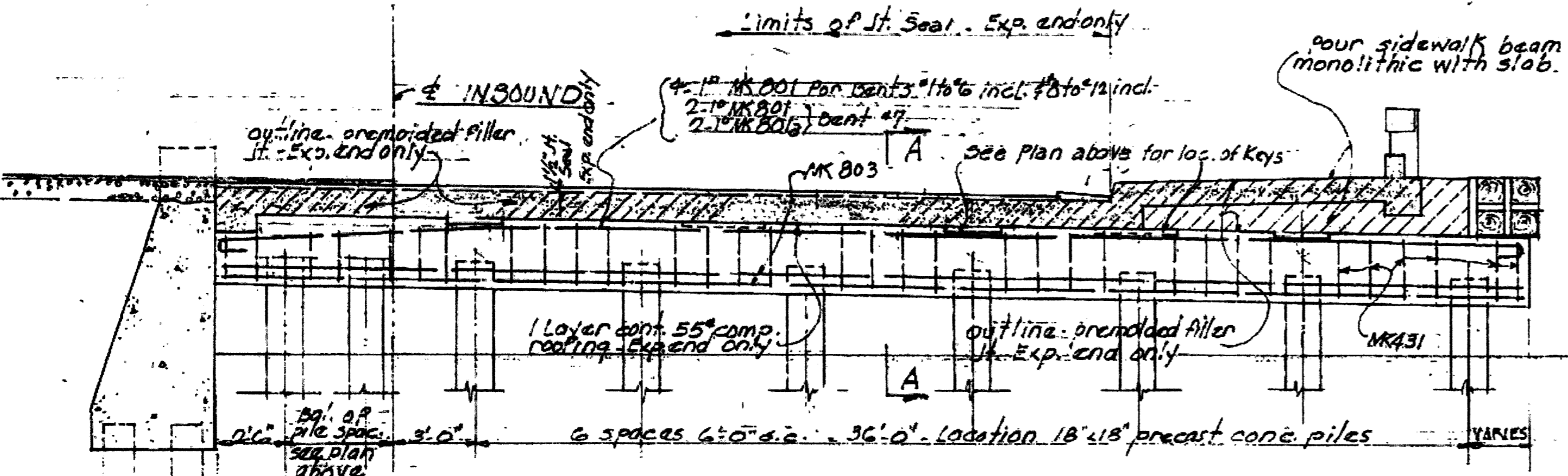
Rev. Nov 21, 1951. Cap revised to accommodate support for detector.

THIS DRAWING IS IN PART ORIGINAL CONTRACT PLANS OF EXISTING BRIDGE AND IS INTENDED FOR INFORMATION AND GUIDANCE ONLY, DRAWINGS ARE NOT TO SCALE.



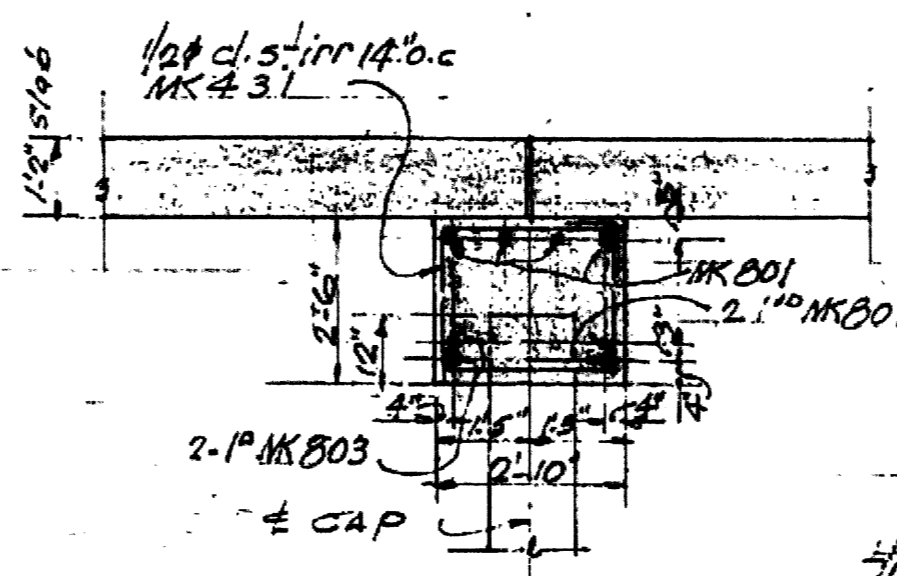
NOTE: Elevations shown on plan thus: () are pile cut-off elevations.
 Sections "H-H" & "J-J" refer to typical sections thru each 3'-0" x 15'-0" 2' deep key. For details see sheet 45.
 Section "K-K" refers to typical section thru each 15'-0" x 2' deep key. For details see sheet 45.

PLAN - PILE AND CAP LOCATIONS - SCALE: 1/8" = 1'-0"

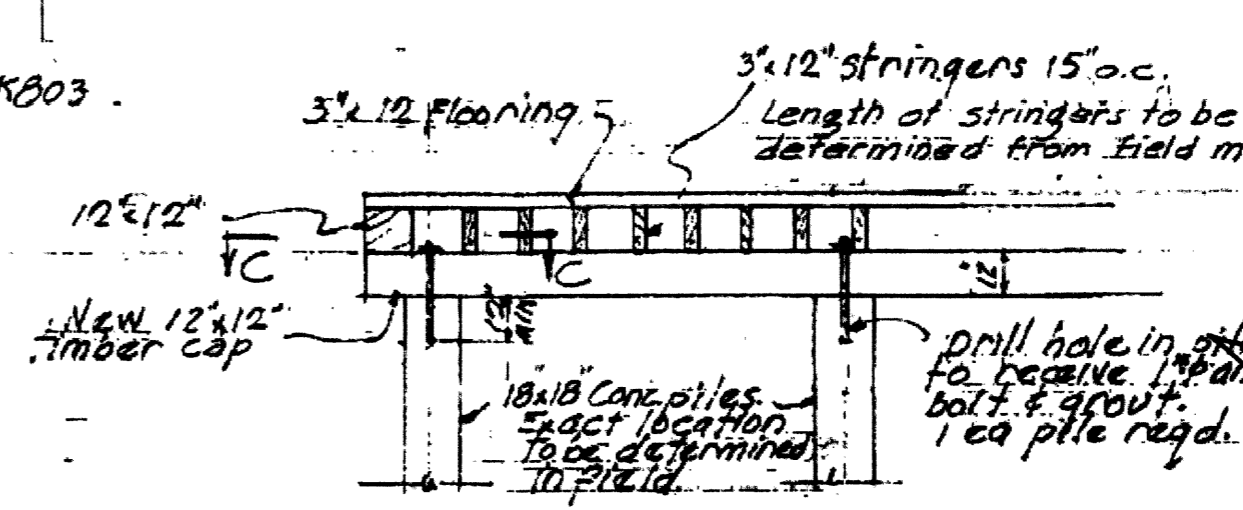


TYPICAL CAP REINFORCING - BENTS 3 TO 5 INCL. (FOR DETAILS OF CAPS #13 & #14 SEE SHEET #17)

SCALE: 1/4" = 1'-0" BENTS 1 & 2 similar except as shown on Sheet 5483.62 A.



SECTION "A-A" SCALE: 3/8" = 1'-0"



SECTION "B-B" SCALE: 1/4" = 1'-0"

REFERENCE: For pile lengths & schedule, see sheet #2.

SYMBOLS:
 Existing conc. piles
 New 18' x 18' conc. piles to be driven.

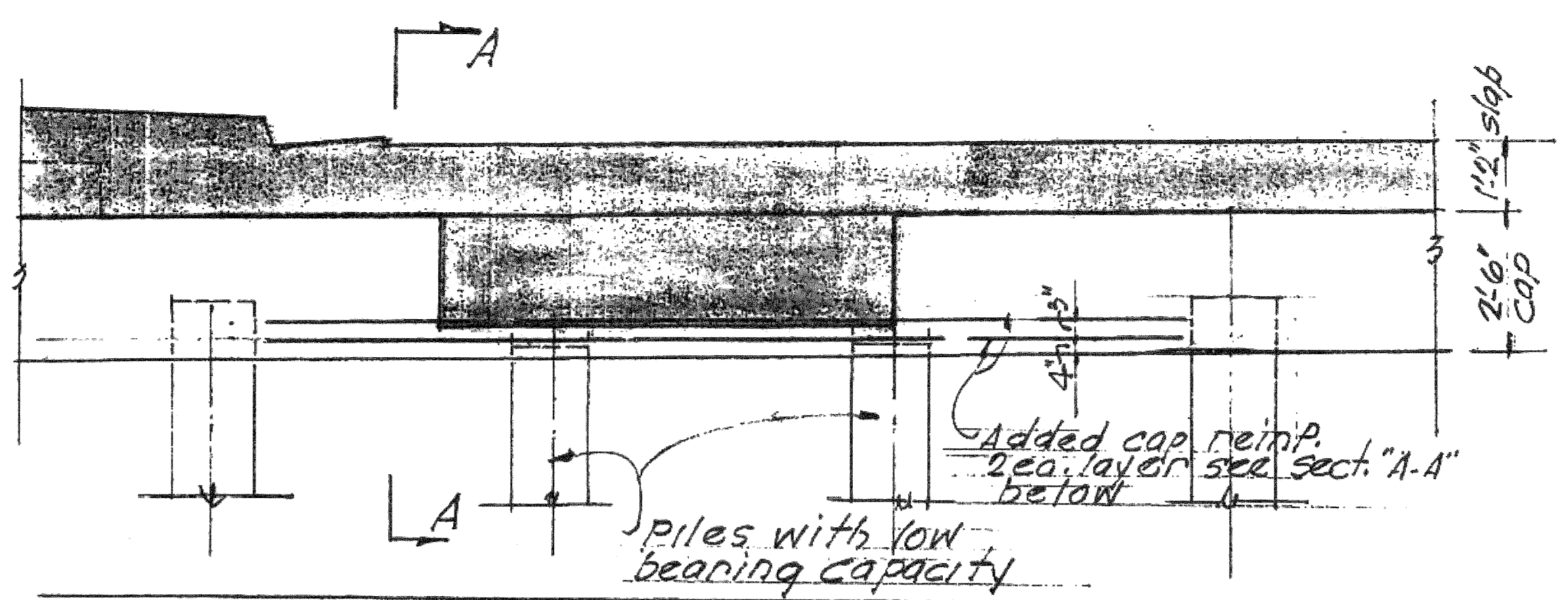
NOTE: Rebuild portion of present deck to adjacent existing timber cap.
 Provide 3/4" x 1 1/2" drift bolts at each stringer over 18' x 18' pile caps.

TERRITORIAL HIGHWAY DEPARTMENT
 TERRITORY OF HAWAII
SLIP COVER NO. 3
 STA. 130+90.97± TO STA. 133+57.0±
 HONOLULU-PEARL HARBOR ROAD
 QUEEN STREET SECTION (EUAKE)
 MARCH 1959
 SHEET NO. 75 OF 77 SHEETS

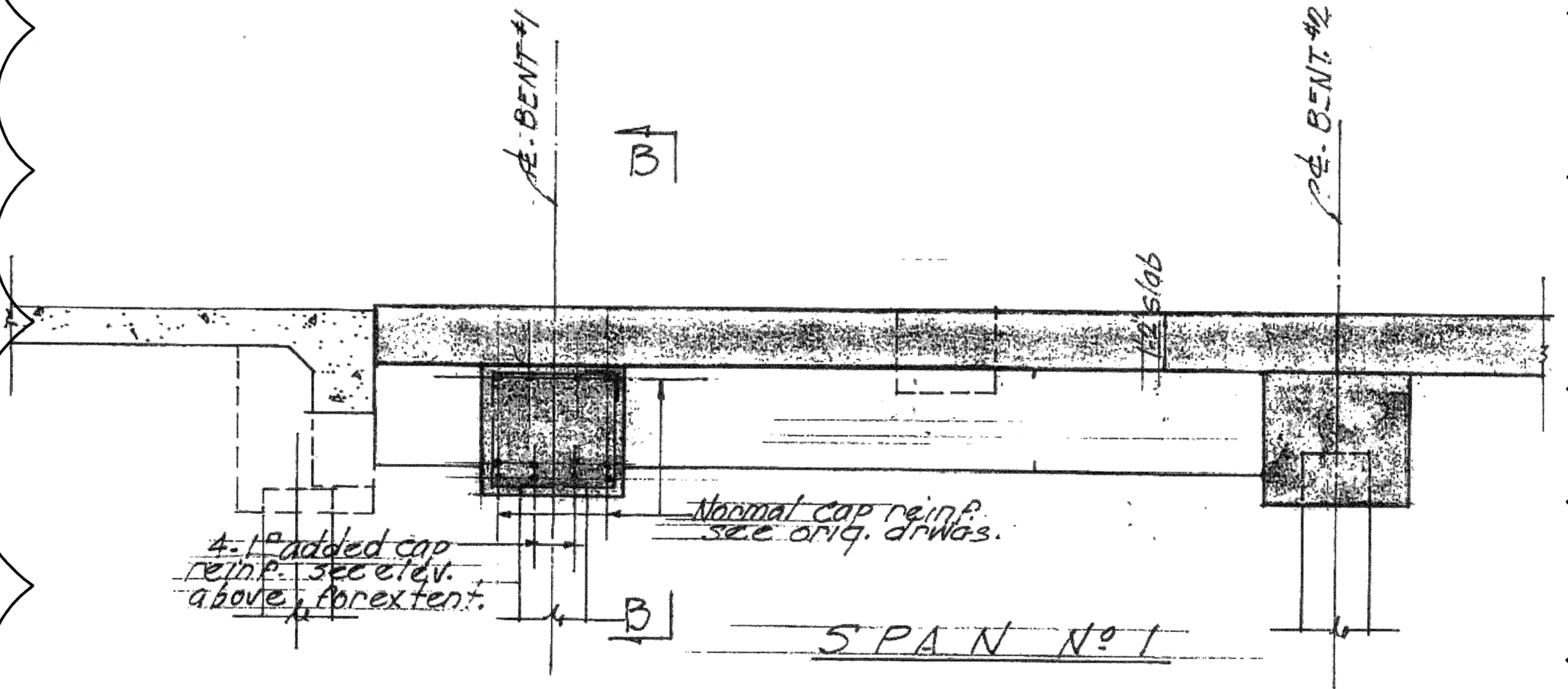
DESIGNED BY: V. E. HAZEL
 DRAWN BY: J. H. HAZEL
 CHECKED BY: J. H. HAZEL
 DATE: 11/21/51

Rev. Nov. 21, 1951

5483.62A



ELEVATION "B-B" - BENT NO. 1 SHOWING
ADDED CAP REINF.



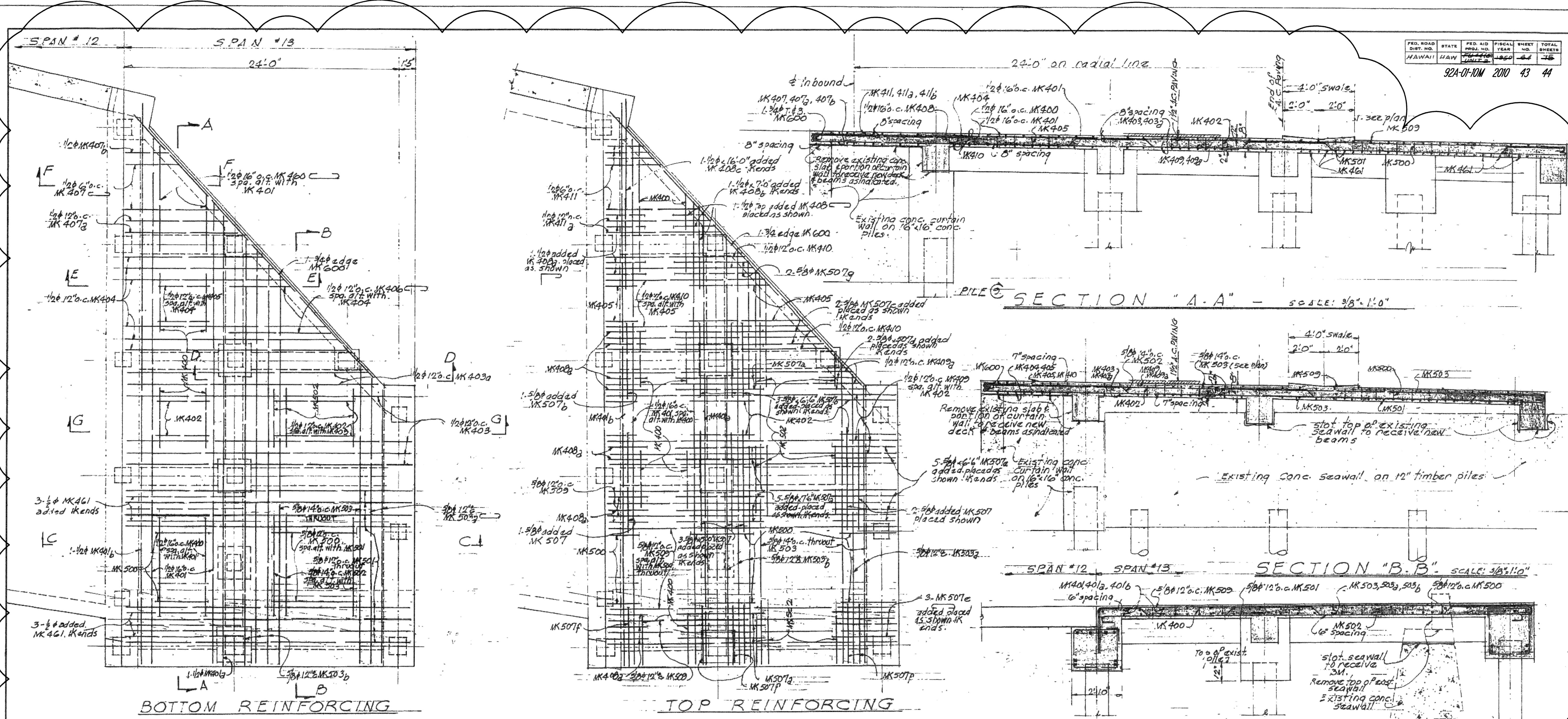
SECTION "A-A"
ADDED CAP REINF. - BENT #1. SLIP COVER #3
SCALE 3/8" = 1'-0"

HONOLULU PEARL HARBOR ROAD - QUEEN STREET SECTION (FU 4465)
92A-01-10M
SHEET NO. R-15 OF 17
5483.63A

THIS DRAWING IS IN PART ORIGINAL CONTRACT PLANS OF EXISTING BRIDGE AND IS INTENDED FOR INFORMATION AND GUIDANCE ONLY, DRAWINGS ARE NOT TO SCALE.

FED. ROAD DIST. NO.	STATE	FED. AID PROJ. NO.	FISCAL YEAR	SHEET NO.	TOTAL SHEETS
HAWAII	HAW	100	1950	43	44

92A-01-10M 2010 43 44



SURVEY PLOTTED BY: [Name]
 DESIGNED BY: [Name]
 CHECKED BY: [Name]
 DATE: 2-28-50
 ORIGINAL PLAN: [Number]
 NOTE BOOK NO.: [Number]

TERRITORIAL HIGHWAY DEPARTMENT
 TERRITORY OF HAWAII
SLIP COVER N° 3
 STA. 130+90.37± TO STA. 133+57.0±
 HONOLULU PEARL HARBOR ROAD
 QUEEN STREET SECTION - FU 4465
 MARCH 1950
 SHEET NO. 43 OF 27 SHEETS

THIS DRAWING IS IN PART ORIGINAL CONTRACT PLANS OF EXISTING BRIDGE AND IS INTENDED FOR INFORMATION AND GUIDANCE ONLY, DRAWINGS ARE NOT TO SCALE.

5483.6443

