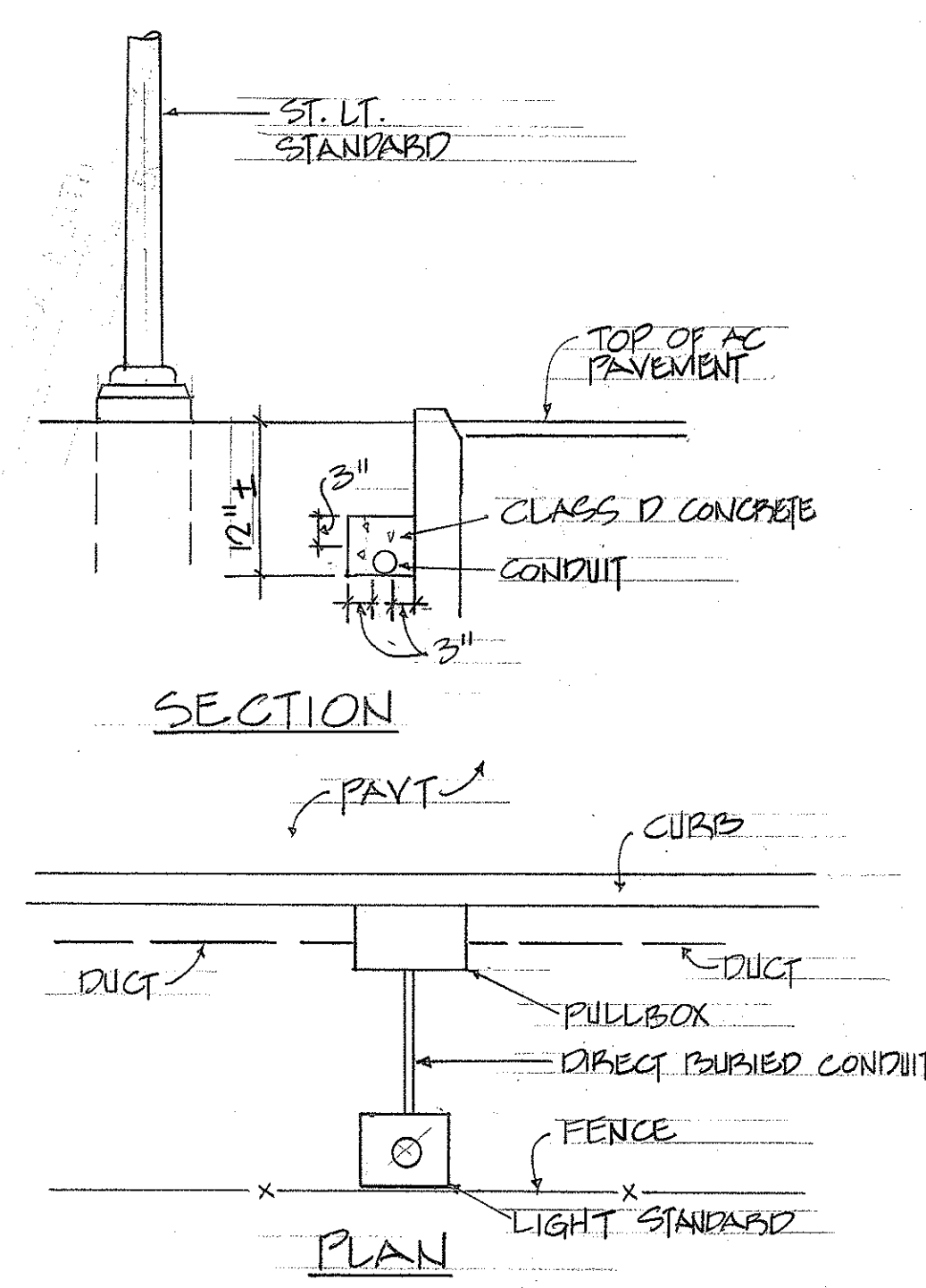


FED. ROAD DIST. NO.	STATE	FED-AID PROJ. NO.	FISCAL YEAR	SHEET NO.	TOTAL SHEETS
HAWAII	HAW.	920A-01-75	1979	5	8

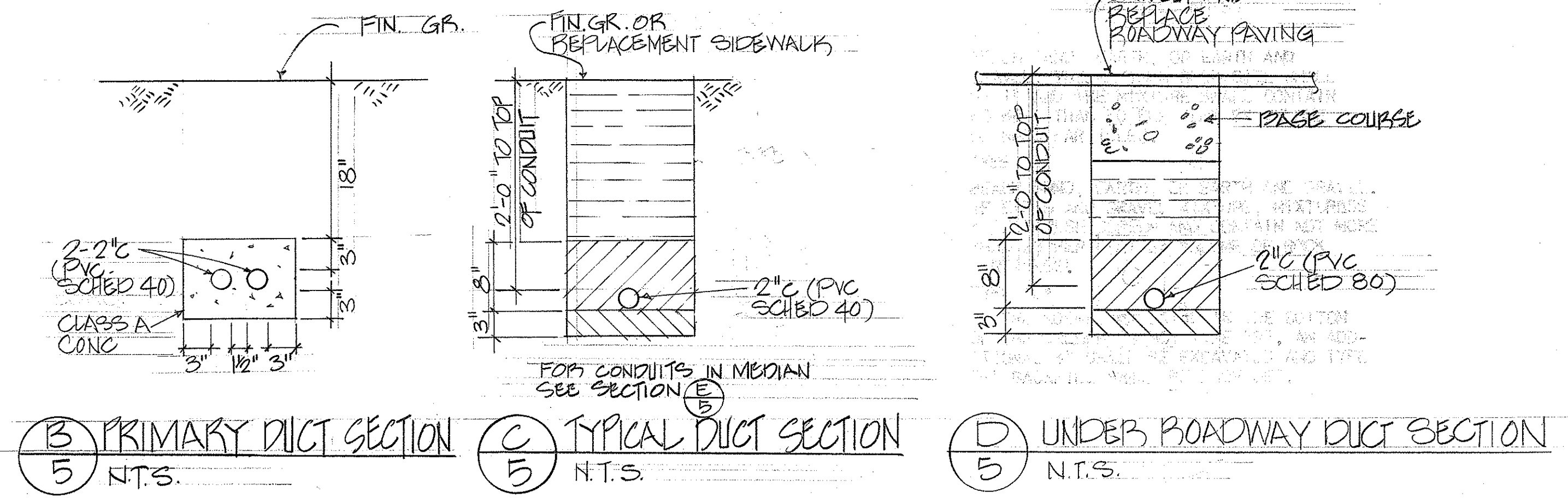
NOTES FOR THIS SHEET:

- CONTRACTOR TO INSTALL CONCRETE BASE COMPLETE WITH ANCHOR BOLTS, CONDUITS AND GROUND RODS AS PER DETAIL (A) EXCEPT BASE TO BE SUITED FOR TRANSFORMER BASE TYPE STANDARD. (B) CITY AND COUNTY OF HONOLULU WILL PROVIDE AND INSTALL STREET LIGHT STANDARD, TRANSFORMER BASE AND LUMINAIRE, BALLAST AND LAMP.
- CONTRACTOR TO INSTALL NEW 2" CONDUIT UNDERGROUND FROM CONCRETE BASE TO NEW PULLBOX. CITY AND COUNTY OF HONOLULU WILL PROVIDE AND INSTALL WIRING AND CONNECTIONS TO EXISTING SERIES CIRCUIT.
- CONTRACTOR TO PROVIDE AND INSTALL NEW PULLBOX PER CITY AND COUNTY OF HONOLULU STANDARD SLD-1.
- CONTRACTOR TO PROVIDE AND INSTALL NEW 2" CONDUIT FROM NEW PULLBOX UP 30' EXISTING POLES FOR FUTURE CONNECTION TO EXISTING STREET LIGHT SERIES CIRCUIT BY CITY AND COUNTY OF HONOLULU.
- CONTRACTOR SHALL NOTIFY THE ELECTRICAL MAINTENANCE SERVICES DIVISION, CITY AND COUNTY OF HONOLULU, THREE (3) WORKING DAYS PRIOR TO COMMENCING OF WORK ON THE CITY AND COUNTY STREET LIGHTING SYSTEM. (PHONE 523-4905).
- CONTRACTOR SHALL KEEP EXISTING LIGHTS OPERABLE UNTIL NEW LIGHTS ARE IN FULL OPERATION. SALVAGED LIGHTING EQUIPMENT SHALL BE HAULED TO PEARL CITY BASEYARD ON LEHUA AVENUE AS DIRECTED BY ENGINEER.
- AFTER EXISTING STREET LIGHT STANDARDS ARE REMOVED, BREAK CONCRETE BASES TO 24" BELOW FINISHED GRADE. BACKFILL HOLE AND FINISH SURFACE TO MATCH ADJACENT AREA TO THE SATISFACTION OF THE ENGINEER.
- REMOVE EXISTING STREET LIGHT WOOD POLES COMPLETELY. DO NOT CUT POLES AT BASE AND LEAVE POLE BUTTS IN THE GROUND.
- ALL EXISTING SIGNS IN MEDIAN THAT ARE OBSTRUCTED BY NEW LIGHT STANDARDS SHALL BE RELOCATED TO CLEAR NEW LIGHT STANDARD.
- ALL EXISTING SIGNS ON POLES TO BE REMOVED SHALL BE RELOCATED TO NEW SIGN POSTS. CONTRACTOR SHALL PROVIDE NEW SIGN POSTS AT SAME LOCATION OF REMOVED POLE.
- THE ABOVE WORK SHALL BE CONSIDERED INCIDENTAL TO THE VARIOUS ITEMS IN THE PROPOSAL.

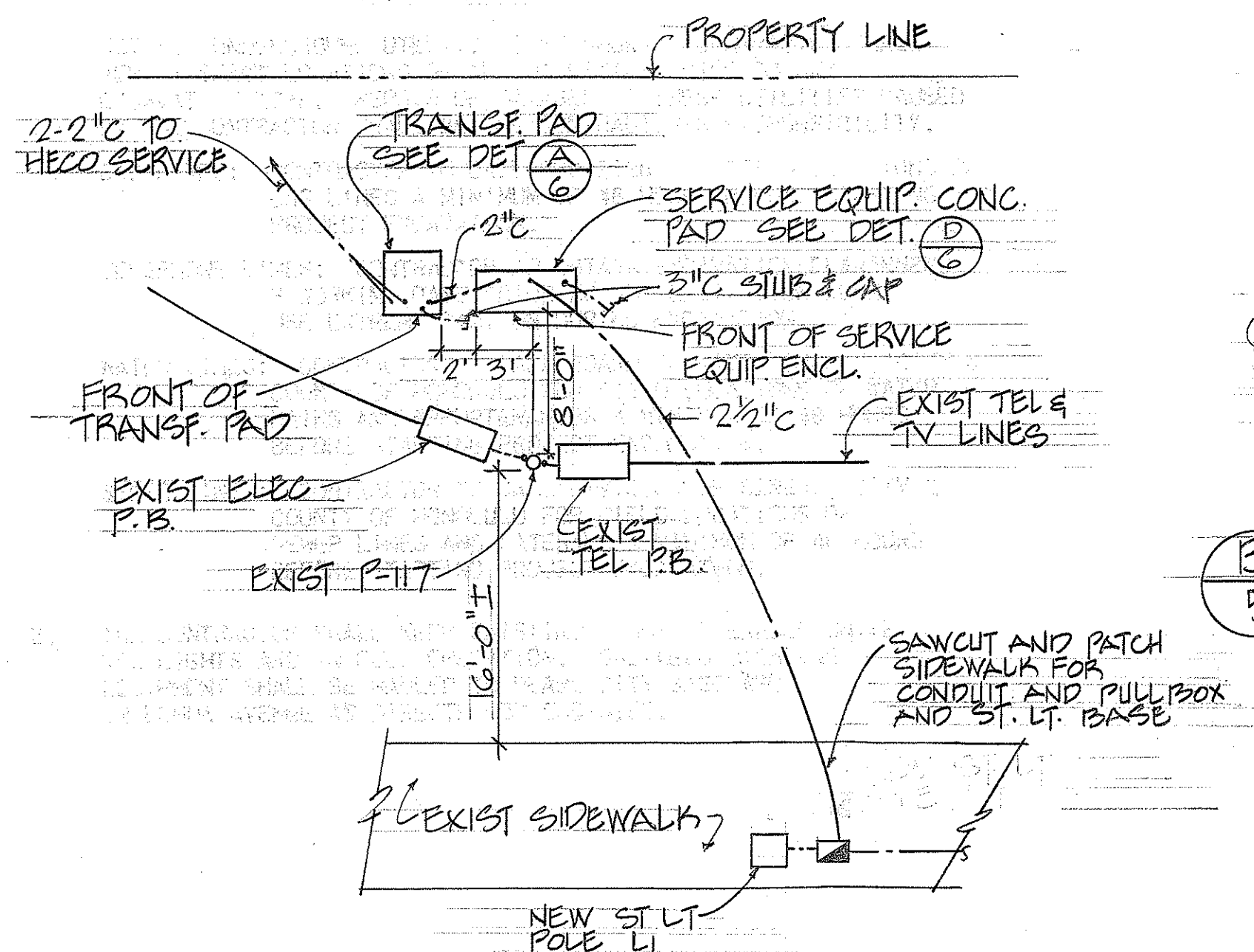
SCHEDULE OF SIGNS TO BE RELOCATED	
SYMBOL	SIGN DESCRIPTION
(1)	SPEED LIMIT SIGN
(2)	BUS STOP SIGN
(3)	NO PARKING
(4)	DO NOT BLOCK INTERSECTION
(5)	SIGNAL AHEAD
(6)	YIELD
(7)	NO PARKING, TOW AWAY ZONE
(8)	STREET SIGN
(9)	PROCEED ANYTIME FOR THIS LANE.



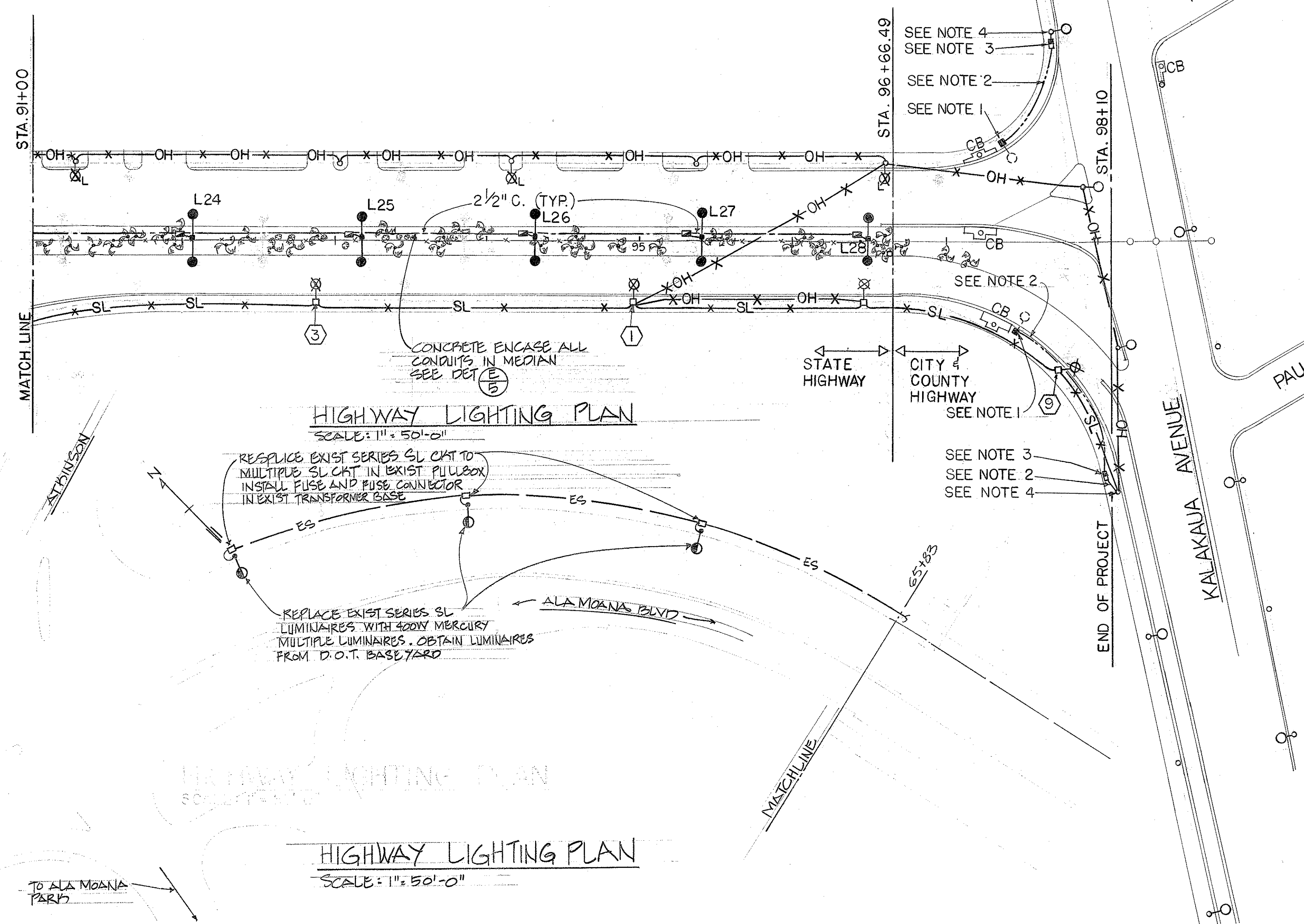
(E) TYP. ST. LT. CONDUIT INSTALLATION IN MEDIAN
5 N.T.S.



(B) PRIMARY DUCT SECTION 5 N.T.S.
(C) TYPICAL DUCT SECTION 5 N.T.S.
(D) UNDER ROADWAY DUCT SECTION 5 N.T.S.



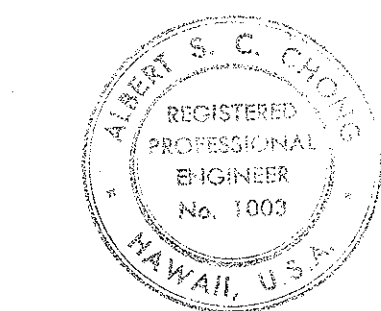
(A) DETAIL
5 N.T.S.



HIGHWAY LIGHTING PLAN
SCALE: 1" = 50'-0"

HIGHWAY LIGHTING PLAN
SCALE: 1" = 50'-0"

APPROVED:
Albert S. C. Chong
CHIEF, PLANNING & ENGINEERING, BWS
DATE: 1/6/81



THIS WORK WAS PREPARED BY ME OR UNDER MY SUPERVISION
Albert S. C. Chong
Albert S. C. Chong, P.E.

4/23/80	ADDED HIGHWAY LIGHTING PLAN TO CONNECT EXISTING SERIES SL TO MULTIPLE SL
DATE	REVISION
STATE OF HAWAII DEPARTMENT OF TRANSPORTATION LAND TRANSPORTATION FACILITIES DIVISION	
ALA MOANA BOULEVARD, HIGHWAY LIGHTING SYSTEM, ALA WAI CANAL TO KALAKAUA AVENUE	
PROJECT NO. 920A-01-75	

SURVEY PLOTTED BY:	DATE:
DRAWN BY:	
DESIGNED BY:	
CHECKED BY:	
NO.	