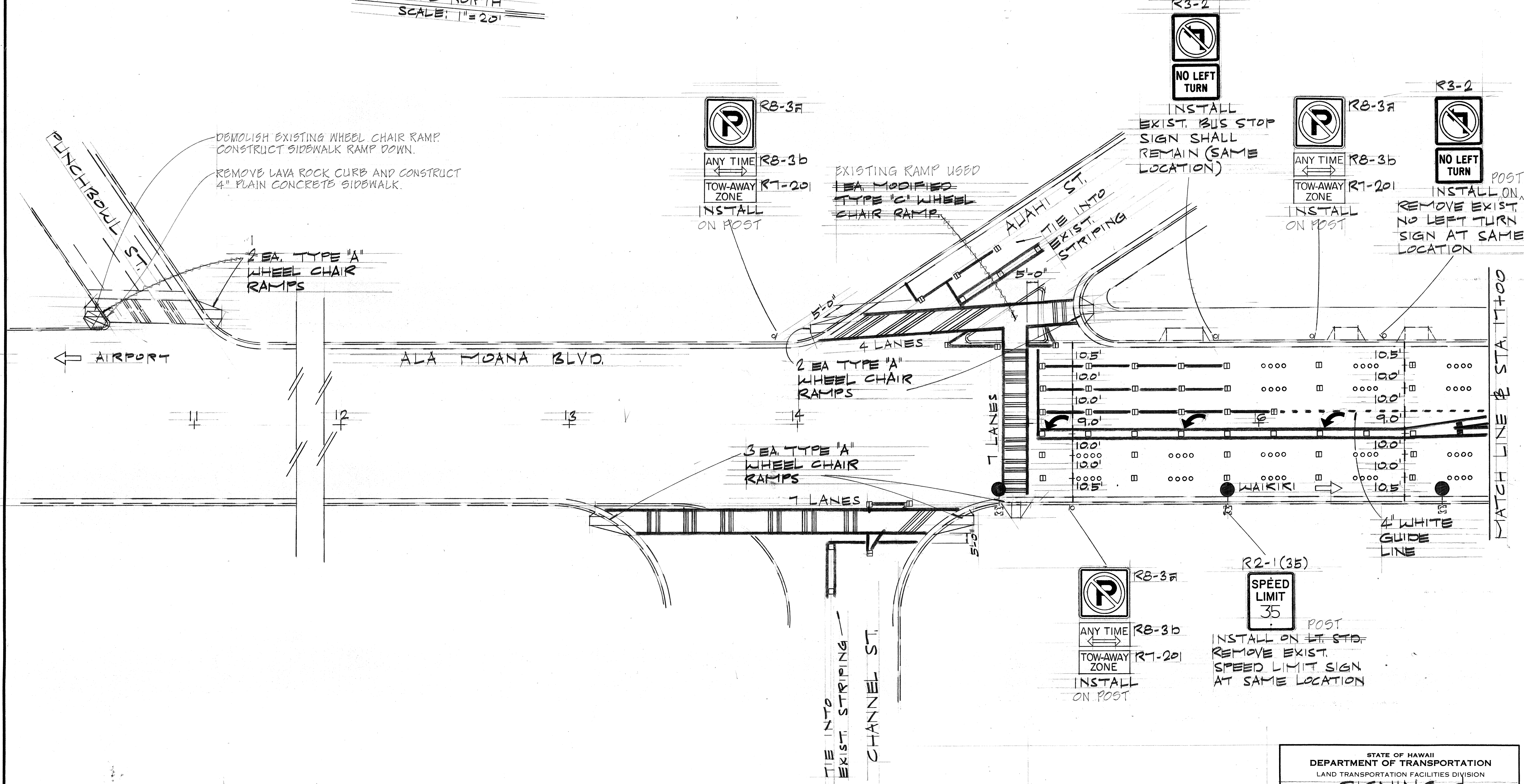


FED. ROAD DIST. NO.	STATE	FED. AID PROJ. NO.	FISCAL YEAR	SHEET NO.	TOTAL SHEETS
HAWAII	HAW.	HHS-092-1(12)	1978	21	59

TITLE NORTH  
SCALE: 1"=20'



ORIGINAL PLAN	DATE
SURVEY PLOTTED BY	
DRAWN BY	
TRACED BY	
DESIGNED BY	
QUANTITIES BY	
CHECKED BY	
No.	

STATE OF HAWAII  
DEPARTMENT OF TRANSPORTATION  
LAND TRANSPORTATION FACILITIES DIVISION

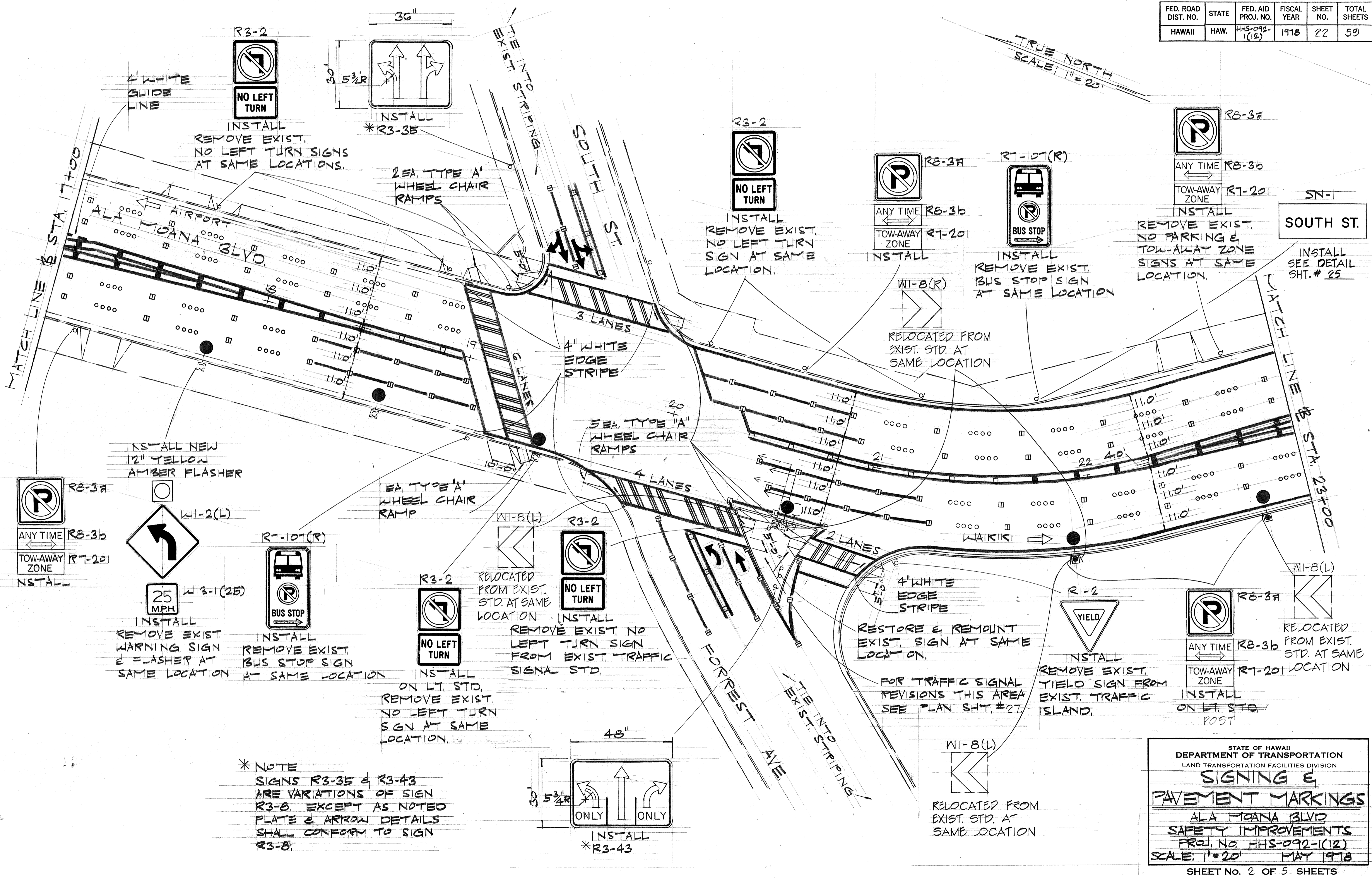
### SIGNING & PAVEMENT MARKINGS

ALA MOANA BLVD  
SAFETY IMPROVEMENTS  
PROJ. NO. HHS-092-1(12)  
SCALE: 1"=20' MAY 1978

SHEET NO. 1 OF 5 SHEETS

FED. ROAD DIST. NO.	STATE	FED. AID PROJ. NO.	FISCAL YEAR	SHEET NO.	TOTAL SHEETS
HAWAII	HAW.	HHS-092-1(12)	1978	22	59

TRUE NORTH  
SCALE: 1" = 20'



DATE	_____
SURVEY PLOTTED BY	_____
DRAWN BY	_____
TRACED BY	_____
DESIGNED BY	_____
QUANTITIES BY	_____
CHECKED BY	_____
ORIGINAL PLAN No.	_____

\* NOTE  
SIGNS R3-35 & R3-43  
ARE VARIATIONS OF SIGN  
R3-8. EXCEPT AS NOTED  
PLATE & ARROW DETAILS  
SHALL CONFORM TO SIGN  
R3-8.

STATE OF HAWAII  
DEPARTMENT OF TRANSPORTATION  
LAND TRANSPORTATION FACILITIES DIVISION

### SIGNING & PAVEMENT MARKINGS

ALA MOANA BLVD  
SAFETY IMPROVEMENTS  
PROJ. NO. HHS-092-1(12)  
SCALE: 1" = 20' MAY 1978  
SHEET No. 2 OF 5 SHEETS

FED. ROAD DIST. NO.	STATE	FED. AID PROJ. NO.	FISCAL YEAR	SHEET NO.	TOTAL SHEETS
HAWAII	HAW.	HHS-092-1(12)	1978	23	59

TRUE NORTH  
SCALE: 1" = 20'

SN-2

CORAL ST.

INSTALL ON POST AT STA. 31+50± LT. 30+00

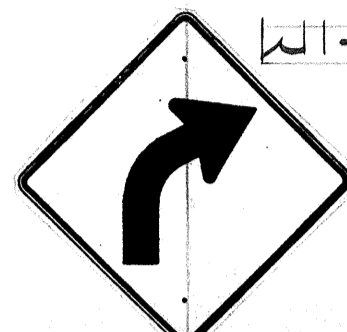
R7-107(R)



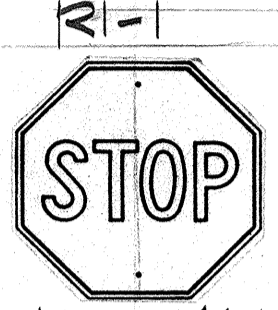
INSTALL REMOVE EXIST. BUS STOP SIGN AT SAME LOCATION



ANY TIME R8-3a  
TOW-AWAY ZONE R7-201  
INSTALL



WI-2(R)  
W13-1(25)  
INSTALL REMOVE EXIST. WARNING & TOW AWAY ZONE SIGNS AT SAME LOCATION



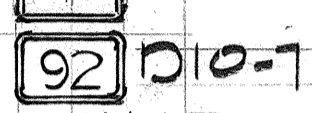
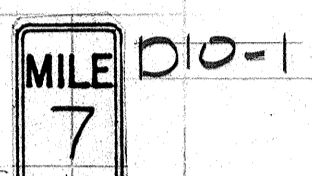
R1-1  
INSTALL REMOVE EXIST. STOP SIGN & RELOCATE EXIST. STREET NAME SIGN AT SAME LOCATION



R8-3a  
ANY TIME R8-3b  
TOW-AWAY ZONE R7-201  
INSTALL



WEST M13-4  
M1-G(92)  
INSTALL REMOVE EXIST. MILEPOST MARKER ASSEMBLY AT SAME LOCATION

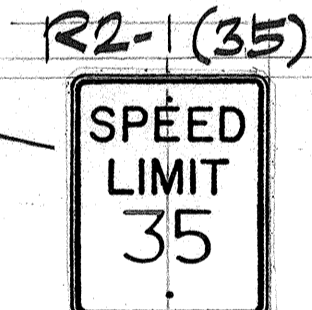
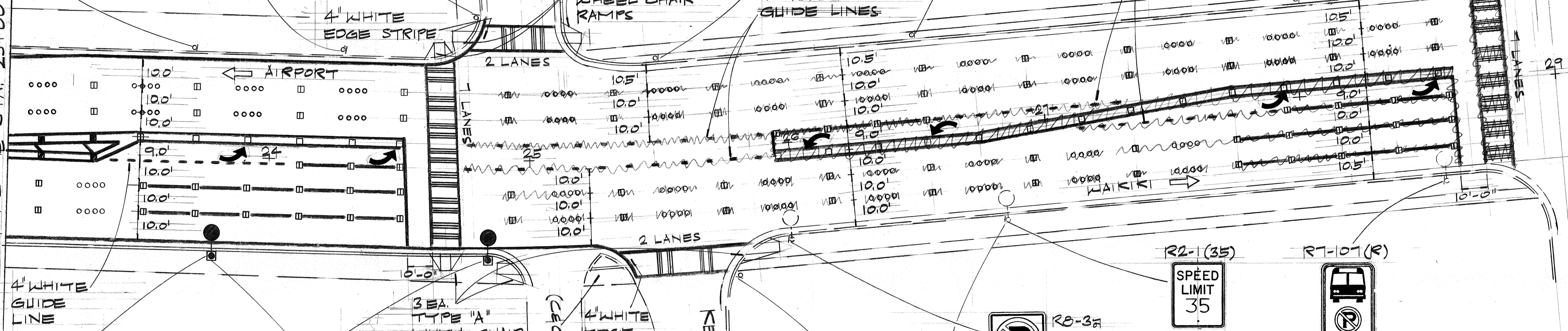


D10-1  
D10-1  
INSTALL

CORAL STREET

STREET

MATCH LINE @ STA. 23+00



R2-1(35)  
INSTALL ON POST REMOVE EXIST. SPEED LIMIT SIGN AT SAME LOCATION

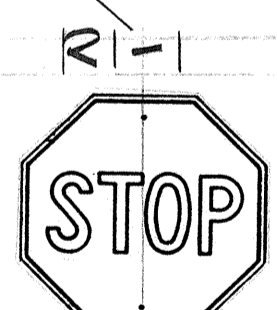
R7-107(R)



INSTALL ON LT. STD. REMOVE EXIST. NO PARKING & BUS STOP SIGNS AT SAME LOCATION



ANY TIME R8-3a  
TOW-AWAY ZONE R7-201  
INSTALL ON LT. STD. POST



R1-1  
INSTALL REMOVE EXIST. STOP SIGN & RELOCATE EXIST. STREET NAME SIGN AT SAME LOCATION



R8-3a  
ANY TIME R8-3b  
TOW-AWAY ZONE R7-201  
INSTALL ON LT. STD.

INSTALL ON LT. STD. REMOVE EXIST. NO PARKING SIGNS AT SAME LOCATIONS



EAST M13-2  
M1-G(92)  
INSTALL ON LT. STD.  
D10-1  
D10-1  
INSTALL ON LT. STD.

SN-2  
CORAL ST.

INSTALL ON EIGHT STANDARD POST MOUNTING HEIGHT 10'-0" SEE DETAIL SHEET NO. 25

STATE OF HAWAII  
DEPARTMENT OF TRANSPORTATION  
LAND TRANSPORTATION FACILITIES DIVISION

### SIGNING & PAVEMENT MARKINGS

ALA MOANA BLVD  
SAFETY IMPROVEMENTS  
PROJ. NO. HHS-092-1(12)  
SCALE: 1" = 20' MAY 1978  
SHEET No. 3 OF 5 SHEETS

DATE	
SURVEY PLOTTED BY	
DRAWN BY	
DESIGNED BY	
CHECKED BY	
NO. BOOK	
NO.	

### TRAFFIC SIGN SUMMARY

TYPE	DESCRIPTION	QUANTITY	
		W/POST	W/O POST
R1-1	STOP	2	
R2-1(35)	SPEED LIMIT 35		2
R3-2	NO LEFT TURN	9	1
R3-35	↑↑	1	
R3-43	ONLY ↑ ONLY	1	
R7-107(R)	BUS STOP	2	2
R7-201	TOW AWAY ZONE		13
R8-3a	Ⓡ (NO PARKING SYMBOL)	8	
R8-3b	ANY TIME (SUPPLEMENTARY PLATE)		5
W1-2(L)	↖		1
W1-2(R)	↗		1
W13-1(25)	25 M.P.H.		2
D10-1	MILE 7 (MILEPOST MARKER)		1
D10-7	92 (HWY. ROUTE MGR. PLATE)		2
M1-G(92)	92 (STATE ROUTE MARKER)		2
M3-2	EAST		1
M3-4	WEST		1
R1-2	YIELD		1
SN-1	"SOUTH ST."		1
SN-2	"CORAL ST"		1

### PAVEMENT MARKING SUMMARY

DESCRIPTION	QUANTITY
TYPE "A" PAVEMENT MARKERS	376 EA.
TYPE "C" PAVEMENT MARKERS	198 EA.
TYPE "D" PAVEMENT MARKERS	54 EA.
TYPE "H" PAVEMENT MARKERS	34 EA.
PAVEMENT STRIPING	5600 LF.
PAVEMENT ARROWS	11 EA.
CROSSWALK MARKING	51 LANES

### GENERAL NOTES

- EXISTING PAVEMENT MARKINGS NOT INCORPORATED IN THE FINAL TRAFFIC PATTERN SHALL BE REMOVED AS DIRECTED BY THE ENGINEER. ALL COSTS SHALL BE INCIDENTAL TO THE CONTRACT ITEM NO. 029, "PAVEMENT STRIPING, MARKINGS & MARKERS."
- FOR ADDITIONAL PAVEMENT MARKING DETAILS & LEGEND, SEE PLAN SHTS #40-42.
- ALL ROUTE MARKER ASSEMBLIES, REGULATORY & WARNING SIGNS SHALL HAVE A MINIMUM 10'-0" MOUNTING HEIGHT. FOR DETAILS SEE PLAN SHT. #32.

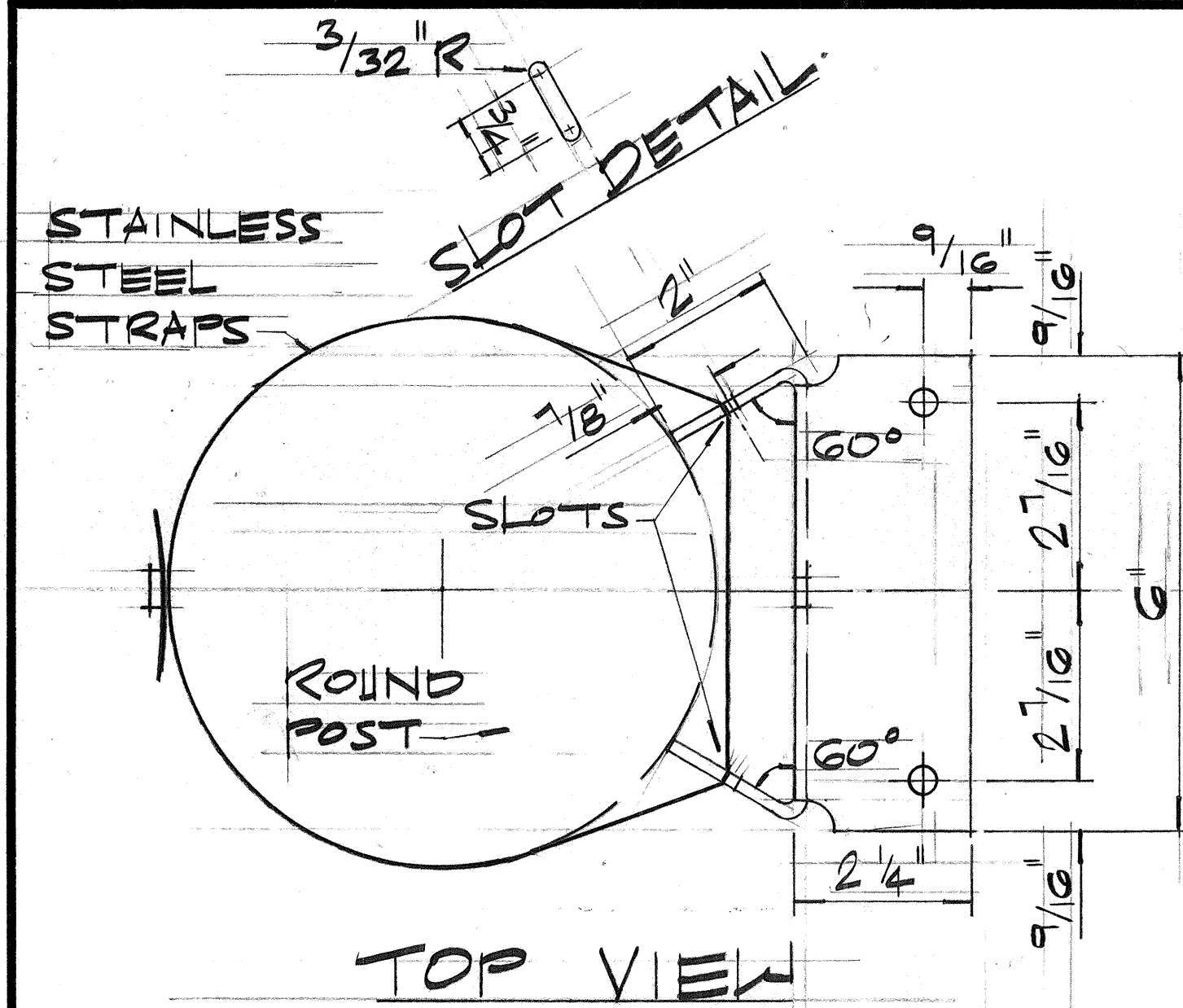
### PAVEMENT MARKING LEGEND

- 4" DOUBLE YELLOW STRIPE W/ TYPE "D" MARKERS 20'-0" o.c.
- 4" DOUBLE YELLOW STRIPE W/ TYPE "H" MARKERS 20'-0" o.c.
- 8" WHITE CHANNELIZING STRIPE W/ TYPE "C" MARKERS 20'-0" o.c.
- 4 EA TYPE "A" MARKERS (AS SHOWN ON DETOUR PLANS)
- 4" WHITE 4" EDGE STRIPE (COLOR & LIMITS AS SHOWN ON PLANS)
- 4" GUIDE LINE (COLOR AS SHOWN ON PLANS)
- CROSSWALK & STOP LINE
- PAVEMENT ARROW

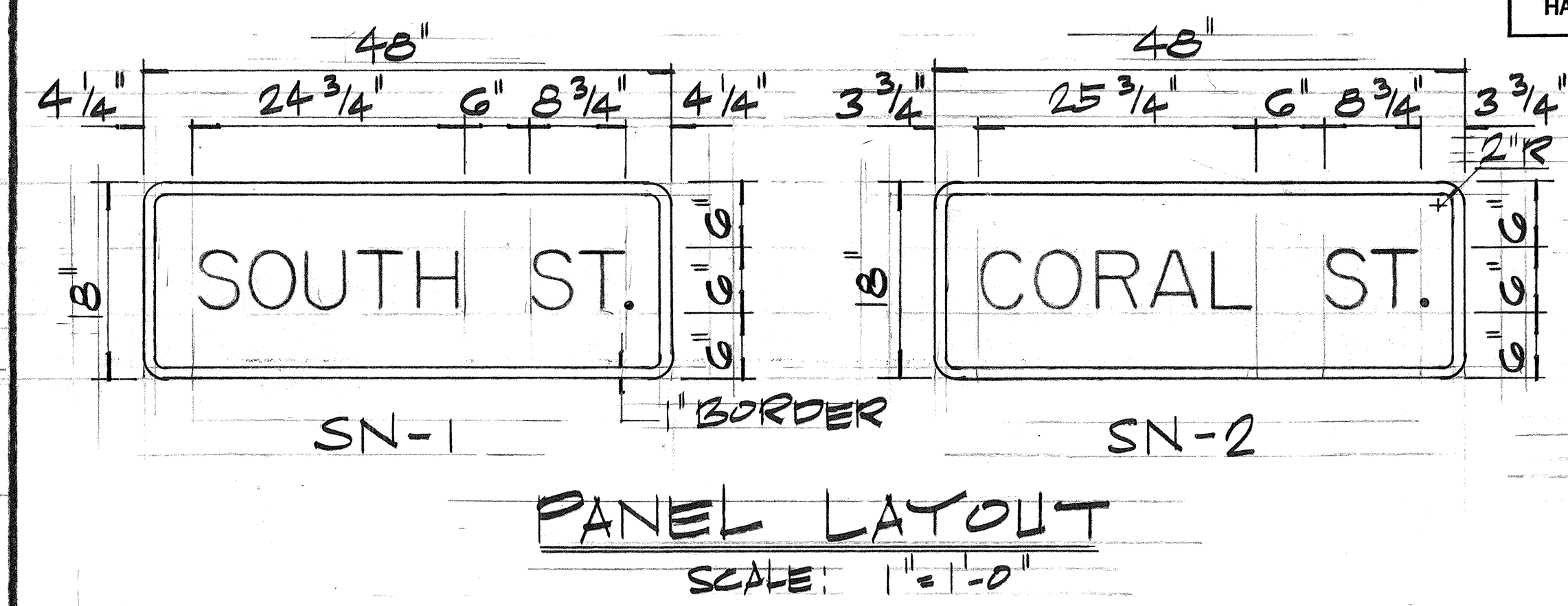
ORIGINAL PLAN  
 SURVEY PLOTTED BY \_\_\_\_\_ DATE \_\_\_\_\_  
 DRAWN BY \_\_\_\_\_  
 TRACED BY \_\_\_\_\_  
 DESIGNED BY \_\_\_\_\_  
 QUANTITIES BY \_\_\_\_\_  
 CHECKED BY \_\_\_\_\_  
 No. \_\_\_\_\_

STATE OF HAWAII  
 DEPARTMENT OF TRANSPORTATION  
 LAND TRANSPORTATION FACILITIES DIVISION  
**MISCELLANEOUS**  
**DETAILS**  
 ALA MOANA BLVD  
 SAFETY IMPROVEMENTS  
 PROJ. NO. HHS-092-1(12)  
 SCALE: AS SHOWN MAY 1978  
 SHEET NO. 4 OF 5 SHEETS

FED. ROAD DIST. NO.	STATE	FED. AID PROJ. NO.	FISCAL YEAR	SHEET NO.	TOTAL SHEETS
HAWAII	HAW.	HHS-092-1(12)	1978	25	59



- NOTE:**
1. MATERIAL TO BE 12 GA. HOT ROLLED STEEL SHEET, LOW CARBON, COMMERCIAL QUALITY, SPECIFICATIONS QPS-636, GRADE 1010.
  2. BRACKET TO BE HOT DIPPED GALV. AFTER FABRICATION PER SPECIFICATION ASTM-A-123-68.
  3. ALL BEND RADII TO BE 1/8"
  4. DEBURR ALL SHARP EDGES
  5. TOLERANCES: DIMENSIONS,  $\pm 1/32"$  ANGLES,  $\pm 0^\circ-30'$



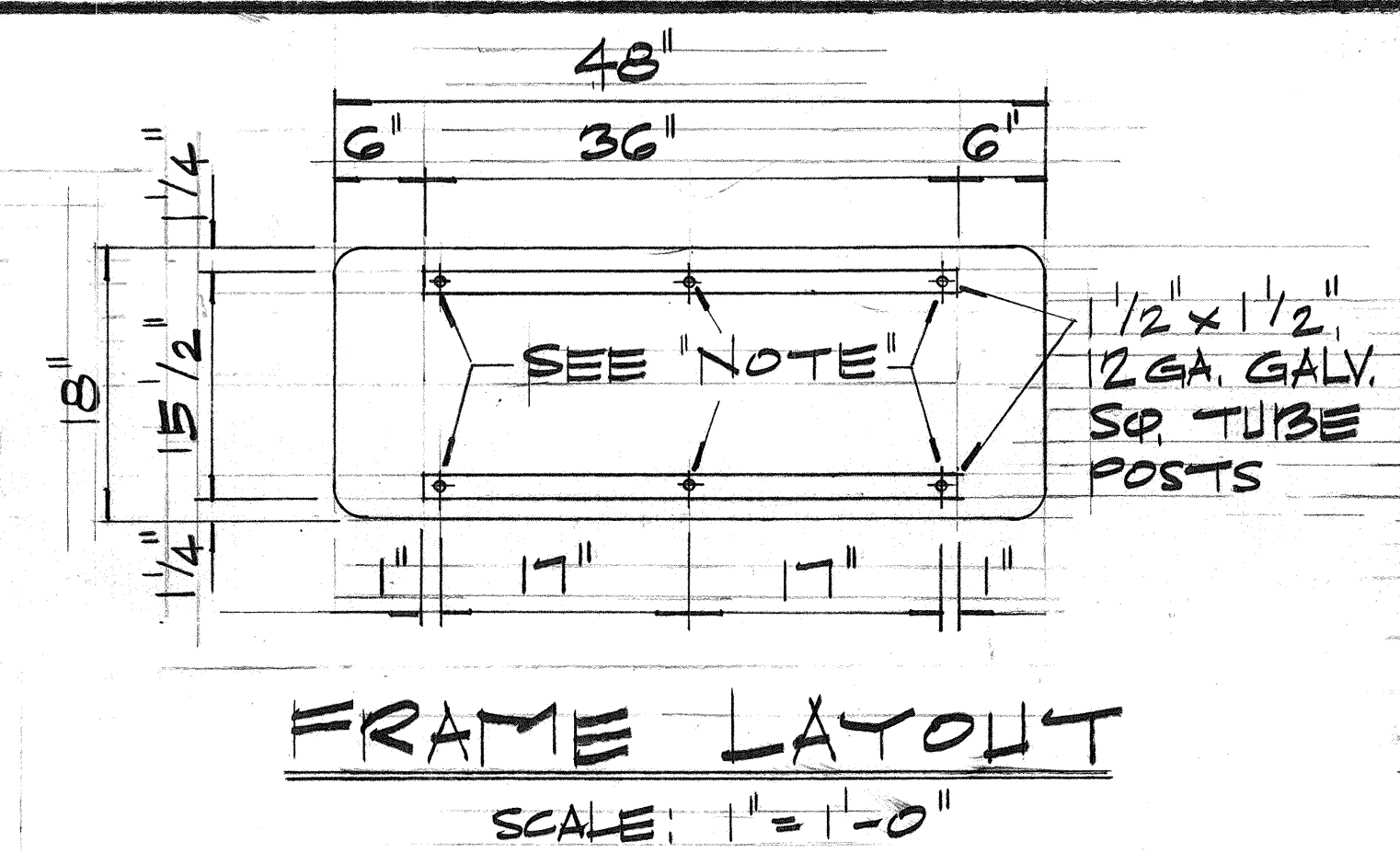
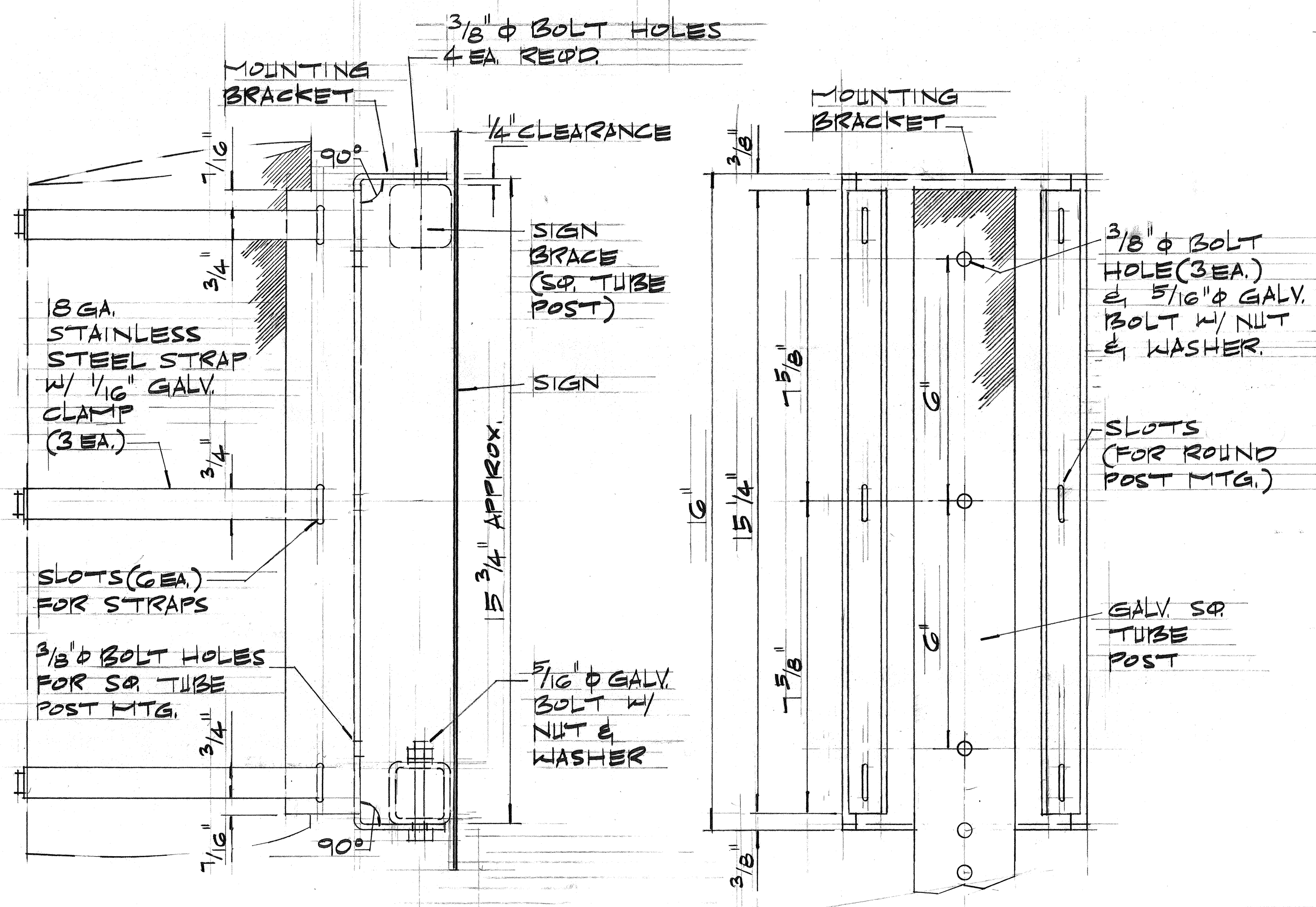
**LETTERS**  
SERIES "D"

**COLOR**  
LETTERS: WHITE REFL. SHEETING ON DEMOUNTABLE \*ALUMINUM CUT-OUTS.  
BACKGROUND: GREEN REFL. SHEETING

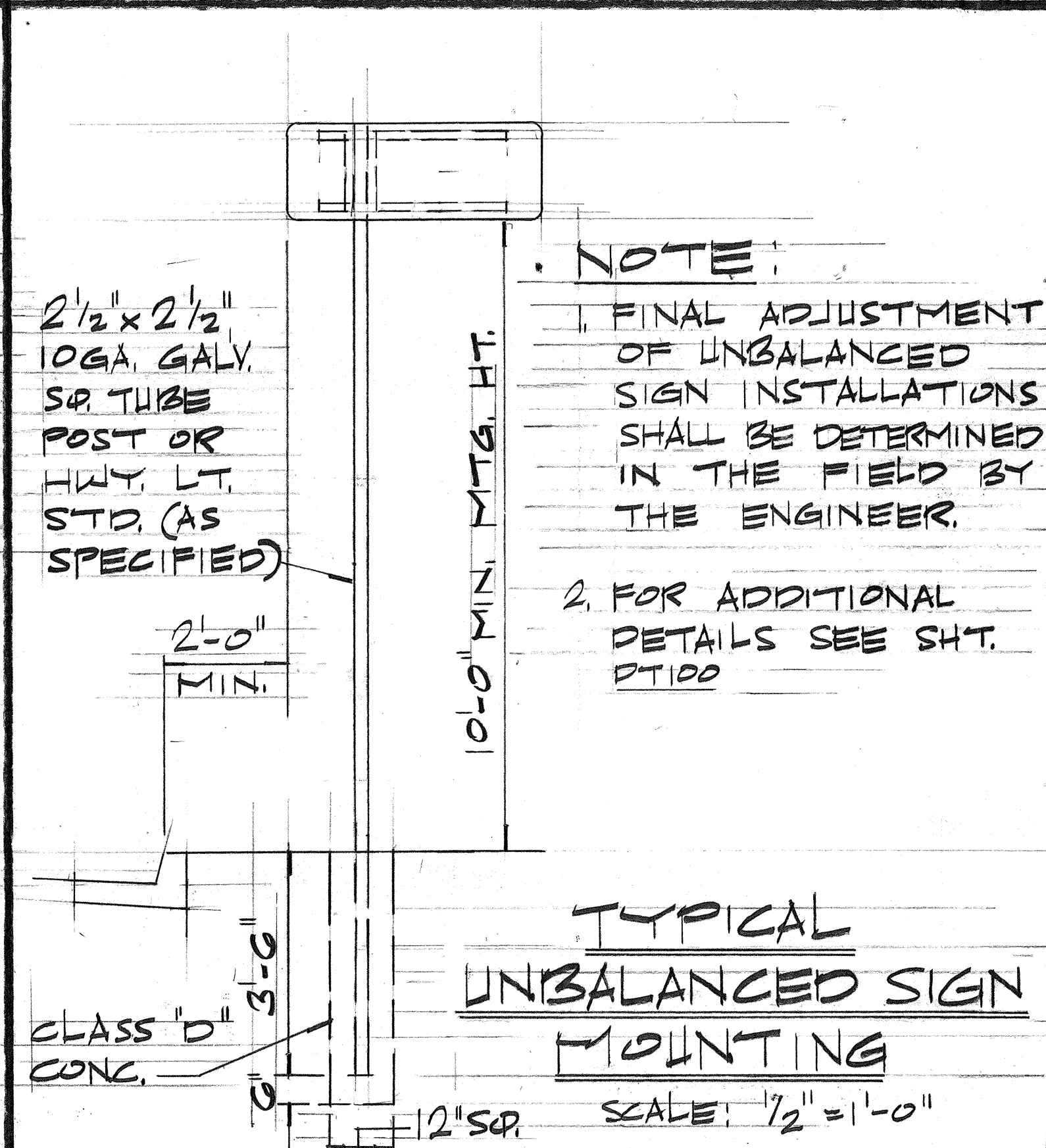
**SIGN PANEL**  
0.100" SHEET ALUMINUM

\* FASTENED TO SIGN PANEL W/ ALUMINUM BLIND RIVETS.

- NOTE:**
1. SIGNS SHALL CONFORM TO THE LATEST FHWA PUBLICATIONS:  
"MANUAL ON UNIFORM TRAFFIC CONTROL DEVICES FOR STREETS & HIGHWAYS", & AS AMENDED  
"STANDARD ALPHABETS FOR HIGHWAY SIGNS", & AS AMENDED.



- NOTE:**
- SIGN SHALL BE ATTACHED TO SQ. TUBE FRAME W/ 5/16"  $\phi$  GALV. BOLTS W/ NUTS & 1/8" x 0.06" STAINLESS STEEL WASHERS W/ NEOPRENE RUBBER GASKET.



- NOTE:**
1. FINAL ADJUSTMENT OF UNBALANCED SIGN INSTALLATIONS SHALL BE DETERMINED IN THE FIELD BY THE ENGINEER.
  2. FOR ADDITIONAL DETAILS SEE SHT. DT100

DATE	_____
SURVEY PLOTTED BY	_____
DRAWN BY	_____
TRACED BY	_____
DESIGNED BY	_____
CHECKED BY	_____
ORIGINAL PLAN	_____
NOTE BOOK	_____
No.	_____

**MOUNTING BRACKET FOR UNBALANCED SIGN INSTALLATION**  
HALF SCALE

STATE OF HAWAII  
DEPARTMENT OF TRANSPORTATION  
LAND TRANSPORTATION FACILITIES DIVISION  
**UNBALANCED SIGN INSTALLATION**  
ALA MOANA BLVD  
SAFETY IMPROVEMENTS  
PROJ. NO. HHS-092-1(12)  
SCALE: AS SHOWN AUG. 1978  
SHEET No. 5 OF 5 SHEETS