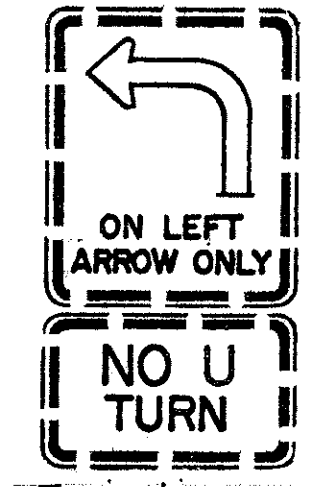
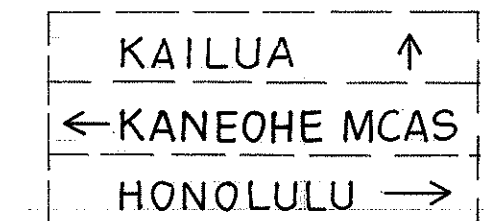


FED. ROAD DIST. NO.	STATE	FED-AID PROJ. NO.	FISCAL YEAR	SHEET NO.	TOTAL SHEETS
HAWAII	HAW.	83G-01-87	1988	4	5

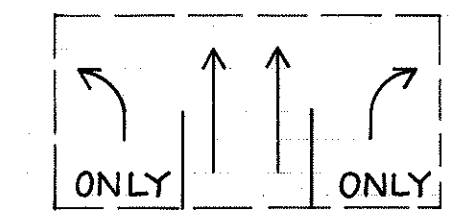
TRUE NORTH
Scale: 1" = 20'



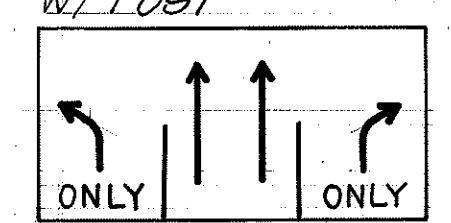
Existing sign to remain.



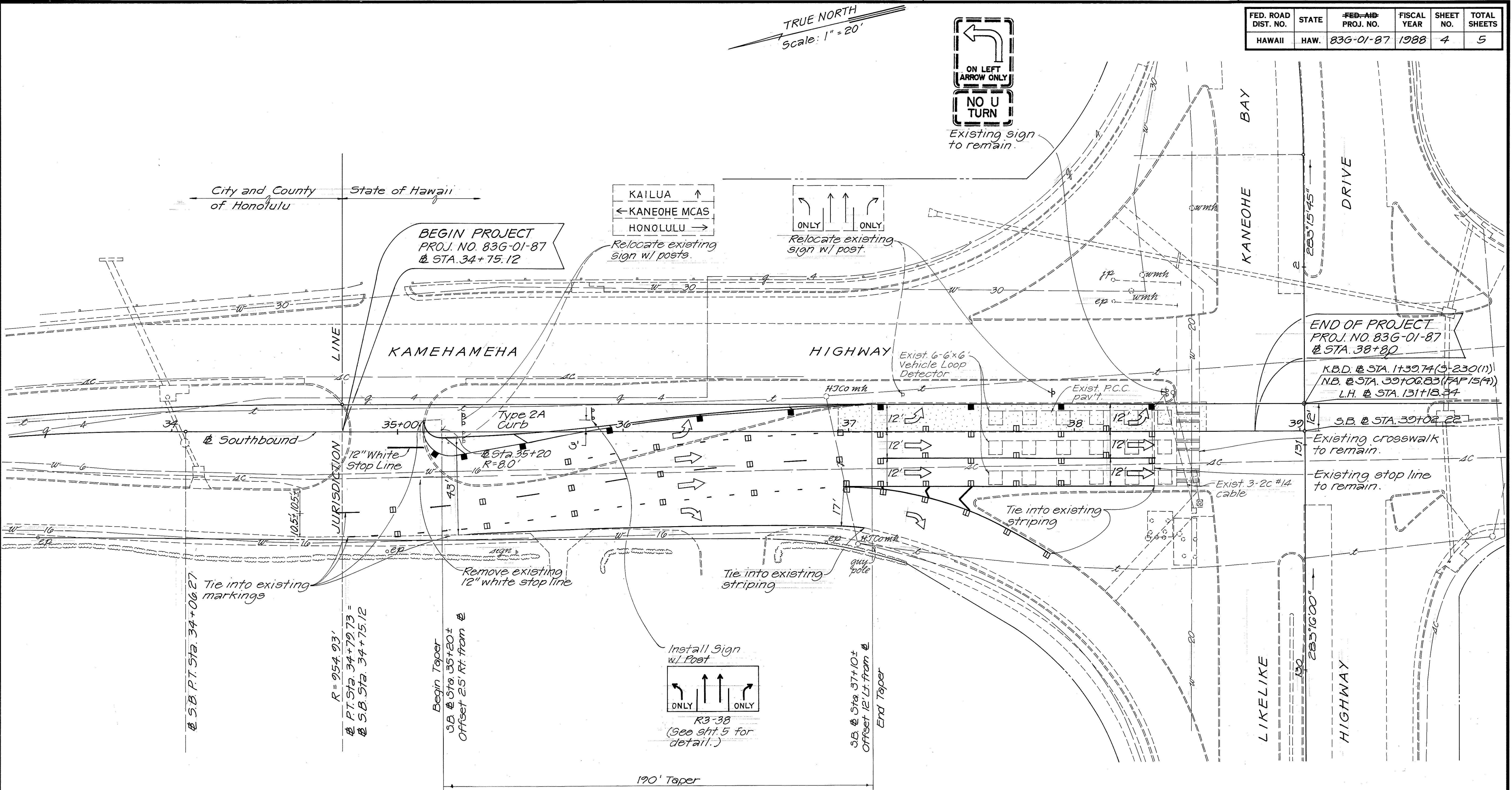
Relocate existing sign w/ posts.



Relocate existing sign w/ post.



Install Sign w/ Post
R3-38
(See sht. 5 for detail.)



END OF PROJECT
PROJ. NO. 83G-01-87
@ STA. 38+80

K.B.D. @ STA. 1+39.74 (S-230(1))
N.B. @ STA. 39+06.83 (FAP 15(4))
L.H. @ STA. 131+18.34

S.B. @ STA. 39+02.22

Existing crosswalk to remain.

Existing stop line to remain.

LIKELIKE HIGHWAY

STATE OF HAWAII
DEPARTMENT OF TRANSPORTATION
HIGHWAYS DIVISION
**ROADWAY IMPROVEMENTS, SIGNING
AND PAVEMENT MARKINGS PLAN**

**KAMEHAMEHA HIGHWAY
Intersection Improvements
at Likelike Highway**
Project No. 83G-01-87
Scale: 1" = 20' Date: July, 1987
SHEET No. 1 OF 1 SHEETS

DATE	REVISION
2/8/88	Revised Median Width and Offsets Striping, R3-38 Sign Location and Delete Curb.

SURVEY PLOTTED BY	DATE
DESIGNED BY	
TRACED BY	
QUANTITIES BY	
CHECKED BY	
ORIGINAL PLAN	
NOTE BOOK	
NO.	