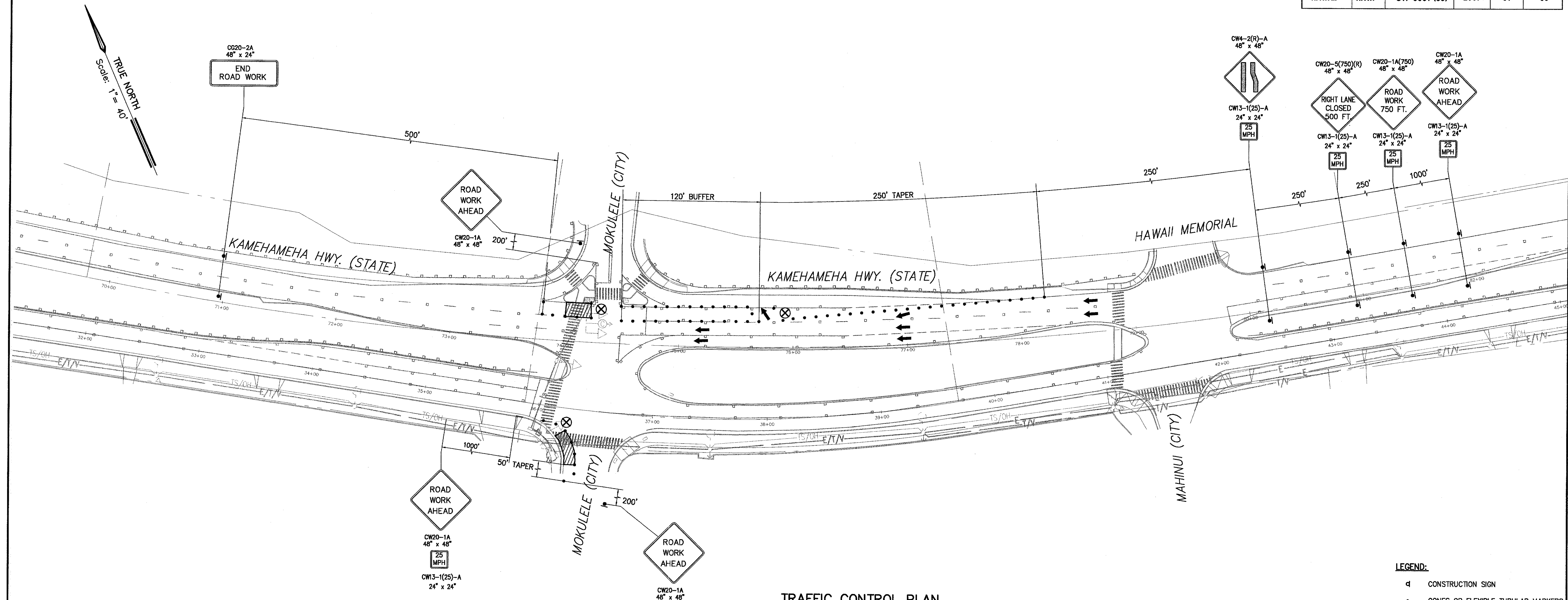


FED. ROAD DIST. NO.	STATE	FED. AID PROJ. NO.	FISCAL YEAR	SHEET NO.	TOTAL SHEETS
HAWAII	HAW.	STP-0001 (30)	2007	81	89

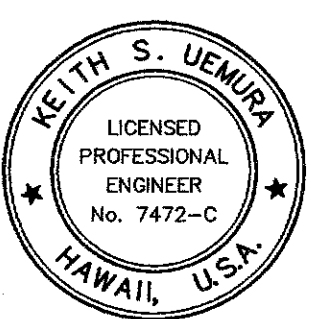


TRAFFIC CONTROL PLAN
(KAMEHAMEHA - MOKULELE INTERSECTION)

LEGEND:

- CONSTRUCTION SIGN
- CONES OR FLEXIBLE TUBULAR MARKERS
- ▨ WORK AREA
- ← DIRECTION OF TRAFFIC
- ⚓ FLAGMAN
- ⊗ POLICE OFFICER
- ⚡ FLASHING ARROW SIGNAL

REVISION	DATE	BRIEF	BY	APPROVED



THIS WORK WAS PREPARED BY ME OR UNDER MY SUPERVISION AND CONSTRUCTION OF THIS PROJECT WILL BE UNDER MY OBSERVATION

Keith S. Uehara

FORER, INC.
dba PARK ENGINEERING
EXPIRES 4/30/08

DEPARTMENT OF TRANSPORTATION SERVICES
CITY AND COUNTY OF HONOLULU
JOB NO.
COMPUTERIZED TRAFFIC CONTROL SYSTEM
PHASE 9
TRAFFIC CONTROL PLAN
KAMEHAMEHA - MOKULELE INTERSECTION

ENGINEER: TSW DATE: MARCH 2007
DRAFTSMAN: TSW SCALE: _____
CHK. BY: KSU REP: _____
APPROVED: _____
DIRECTOR: _____ DIVISION ENGINEER: _____

APPROVED:

DATE:

CHIEF, TRAFFIC REVIEW BRANCH, DPP

FILE	POCKET	FOLDER	NO.