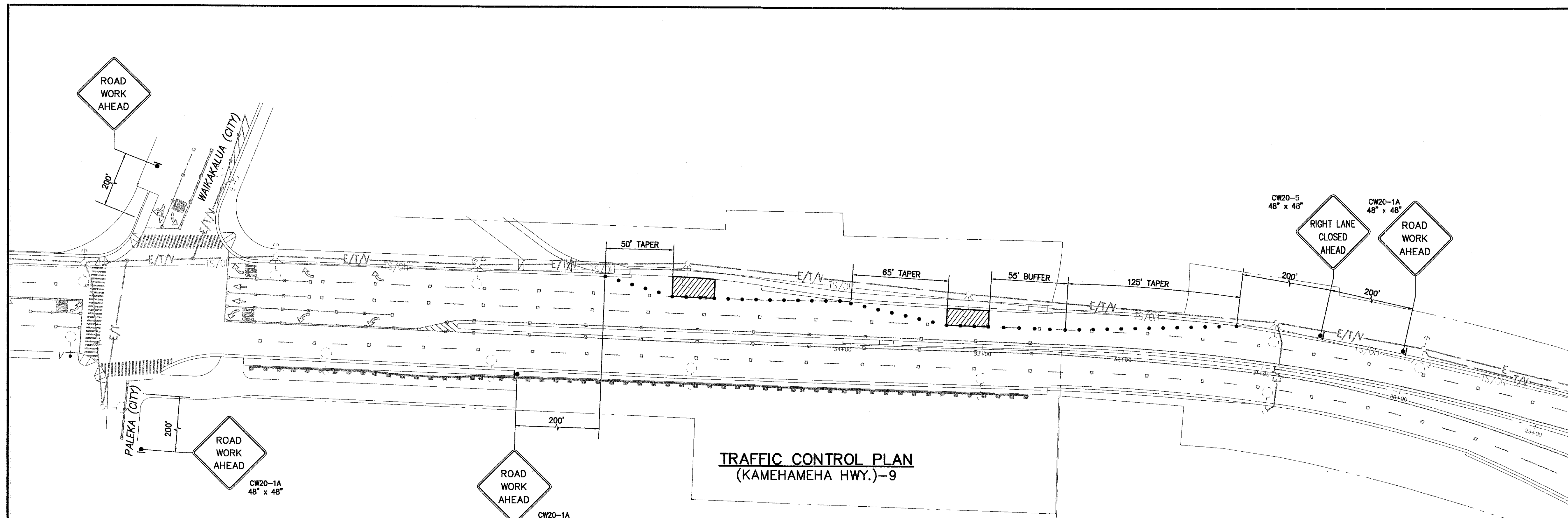
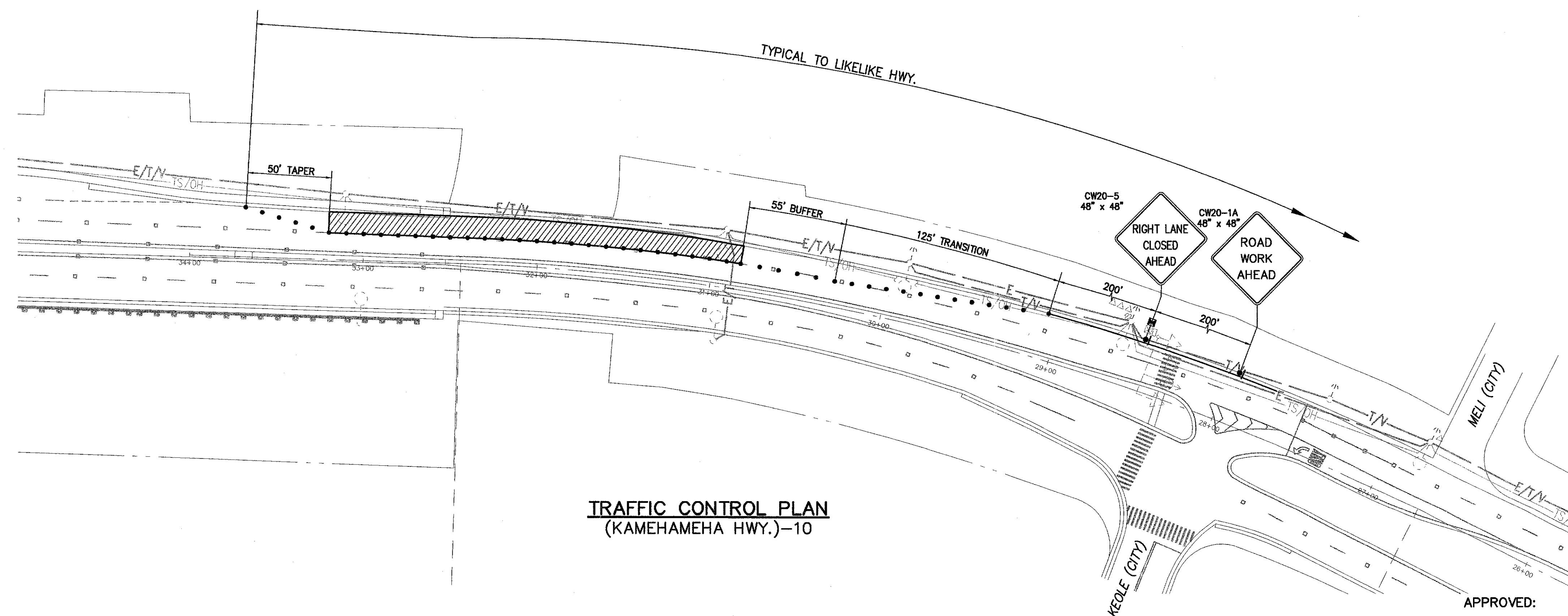


FED. ROAD DIST. NO.	STATE	FED. AID PROJ. NO.	FISCAL YEAR	SHEET NO.	TOTAL SHEETS
HAWAII	HAW.	STP-0001 (30)	2007	60	89



TRAFFIC CONTROL PLAN
(KAMEHAMEHA HWY.)-9

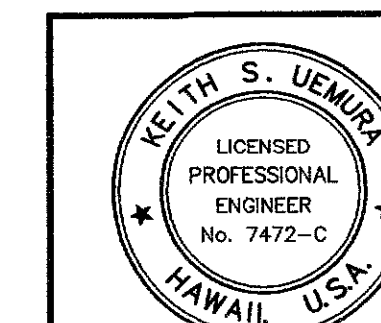


TRAFFIC CONTROL PLAN
(KAMEHAMEHA HWY.)-10

LEGEND:

- CONSTRUCTION SIGN
- CONES OR FLEXIBLE TUBULAR MARKERS
- WORK AREA
- DIRECTION OF TRAFFIC
- FLAGMAN
- POLICE OFFICER
- FLASHING ARROW SIGNAL

REVISION	DATE	BRIEF	BY	APPROVED



THIS WORK WAS PREPARED BY
ME OR UNDER MY SUPERVISION
AND CONSTRUCTION OF THIS PROJECT
WILL BE UNDER MY OBSERVATION
Keith S. Uemura
P.E., Inc.
480 PARK ENGINEERING
EXPIRES 4/30/08

DEPARTMENT OF TRANSPORTATION SERVICES
CITY AND COUNTY OF HONOLULU
JOB NO.
COMPUTERIZED TRAFFIC CONTROL SYSTEM
PHASE 9
TRAFFIC CONTROL PLAN
KAMEHAMEHA HWY. - WAIKALUA/PALEKA TO LIKELIKE

ENGINEER: TSW DATE: MARCH 2007
DRAFTSMAN: TSW SCALE:
CHK. BY: KSU REF.
APPROVED: APPROVED:
DIRECTOR: DIVISION ENGINEER:

APPROVED:

DATE:

CHIEF, TRAFFIC REVIEW BRANCH, DPP

FILE	FOOTING	FOUNDATION	NO.