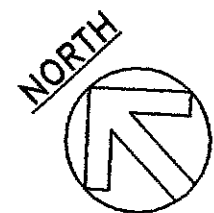
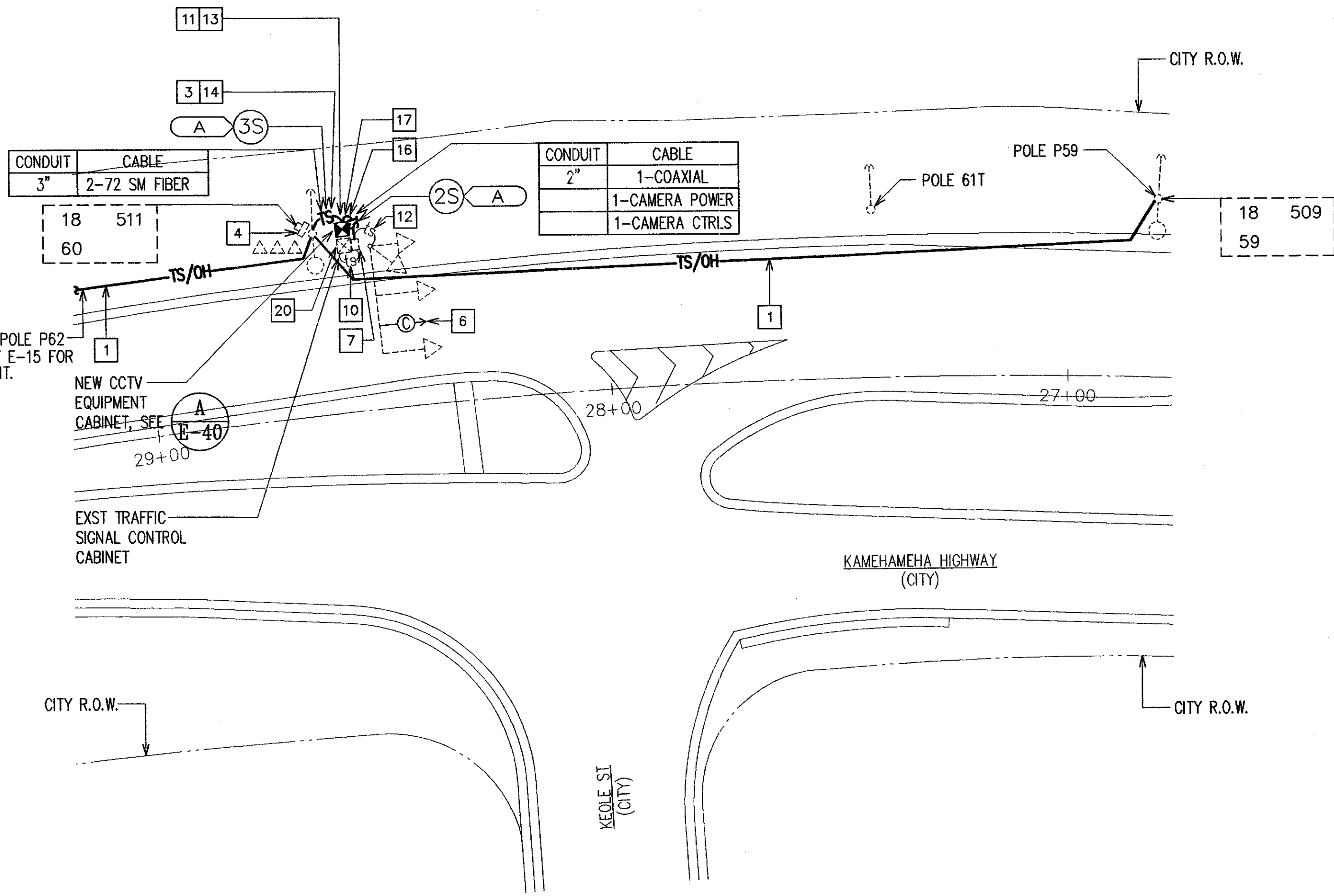
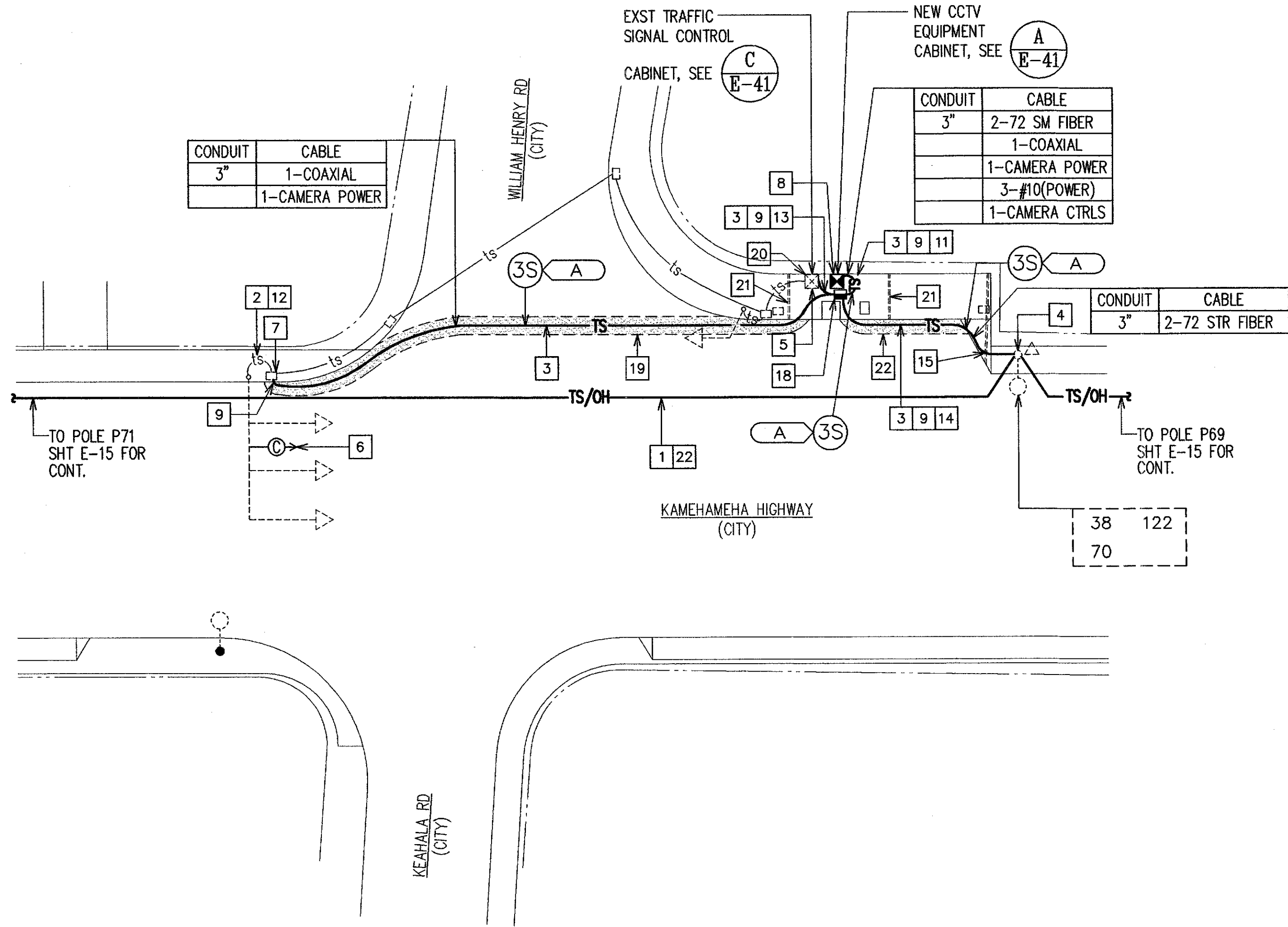
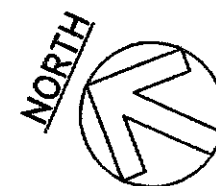


| FED. ROAD DIST. NO. | STATE | FED. AID PROJ. NO. | FISCAL YEAR | SHEET NO. | TOTAL SHEETS |
|---------------------|-------|--------------------|-------------|-----------|--------------|
| HAWAII              | HAW.  | STP-0001 (30)      | 2007        | 32        | 89           |



**KAMEHAMEHA HWY/WILLIAM HENRY ROAD/  
KEAHALA ROAD INTERSECTION CCTV PLAN**  
SCALE: 1"=20'



**KAMEHAMEHA HWY/KEOLE ST INTERSECTION CCTV PLAN**  
SCALE: 1"=20'

**ITEMS OF WORK:**

- 1

NEW OVERHEAD FIBER OPTIC CABLE INSTALLED ON EXISTING HECO POLES. PROVIDE 3/16" EXTRA HIGH STRENGTH STEEL MESSENGER, 1800 LBS TENSION, BETWEEN EXISTING HECO POLES. LASH 72-STRAND FIBER OPTIC SINGLE MODE CABLE TO MESSENGER. SEE DETAIL B/E-42.
- 2

PROVIDE NEW TRAFFIC CONTROL WIRING IN EXISTING TRAFFIC SIGNAL CONDUIT. TYPE AS INDICATED.
- 3

NEW UNDERGROUND TRAFFIC CONTROL RACEWAY AND WIRING. WIRING AS INDICATED.
- 4

NEW FIBER OPTIC CABLE RISER AT EXISTING HECO POLE. PROVIDE 3" GR5 CONDUIT RISER AT POLE, FROM FINISHED GRADE TO 30" BELOW CONNECTION POINT. SEAL AROUND CABLE AT END OF RISER. SEE DETAIL C/E-32.
- 5

PENETRATE EXISTING TRAFFIC SIGNAL CONTROLLER CABINET FOR THE INSTALLATION OF NEW CONDUIT.
- 6

PROVIDE NEW CAMERA ON EXISTING MAST ARM. SEE DETAIL A/E-42 FOR MOUNTING.
- 7

BREAK AND PATCH EXISTING TRAFFIC SIGNAL PULLBOX FOR INSTALLATION OF NEW CONDUIT.
- 8

NEW VIDEO EQUIPMENT CABINET. LOCATE MINIMUM OF 4'-0" FROM EXISTING TRAFFIC SIGNAL CONTROL CABINET.
- 9

SAWCUT AND PATCH SIDEWALK FOR CONDUIT INSTALLATION.
- 10

PROVIDE 2#10, 1#10 GROUND FOR NEW VIDEO EQUIPMENT CABINET POWER, IN EXISTING CONDUIT.
- 11

NEW 3"C, PROVIDE CCTV POWER CABLE, CCTV CONTROL CABLES, COAXIAL VIDEO CABLE AND TWO 72-STRAND FIBER OPTIC CABLES.
- 12

INSTALL NEW CCTV POWER CABLE, CCTV CONTROL CABLES, AND COAXIAL VIDEO CABLE IN EXISTING CONDUIT. CONTRACTOR TO COORDINATE WITH DTS TRAFFIC SIGNAL AND TECHNOLOGY DIVISION, ANY INTERRUPTION TO THE EXISTING TRAFFIC SIGNAL SYSTEM. SEE TRAFFIC CONTROL PLANS.
- 13

PROVIDE 2#10, 1#10 GROUND FOR NEW VIDEO EQUIPMENT CABINET POWER, IN NEW CONDUIT.
- 14

3"C, 3-1" INNER DUCT. PROVIDE TWO 72-STRAND, SINGLE MODE CABLE. PROVIDE PULLWIRE THROUGH UNUSED INNER DUCTS.
- 15

ROUTE CONDUIT BELOW EXISTING DRAIN LINE.
- 16

NEW 3"C, PROVIDE CCTV POWER CABLE, COAXIAL VIDEO CABLE.
- 17

NEW VIDEO EQUIPMENT CABINET. LOCATE MINIMUM OF 18" FROM EXISTING TRAFFIC SIGNAL CONTROL CABINET.
- 18

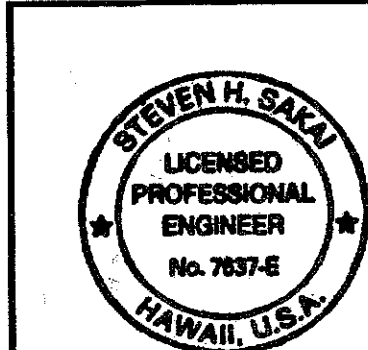
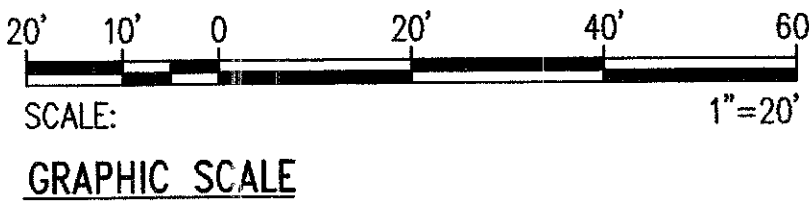
NEW TYPE B TRAFFIC CONTROL PULLBOX. SEE DETAIL B/E-40.
- 19

SAWCUT AND PATCH ROADWAY FOR NEW CONDUIT. EXTENT OF SAWCUT AS INDICATED.
- 20

EXISTING TRAFFIC SIGNAL CONTROL CABINET. CONNECT TO EXISTING POWER CIRCUIT AND EXTEND TO NEW CCTV EQUIPMENT CABINET.
- 21

ROUTE NEW RACEWAY TO AVOID EXISTING DRAIN LINE.
- 22

PROVIDE 18" MINIMUM CLEARANCE FROM THE ROADWAY SURFACE TO THE LOWEST POINT OF THE INSTALLED FIBER OPTIC CABLE.



THIS WORK WAS PREPARED BY ME  
OR UNDER MY SUPERVISION  
DATE: 4/30/08  
LIC. EXPIRATION: 4/30/08

| REVISION  | DATE | BRIEF | BY | APPROVED |
|---|------|-------|----|----------|
|   |      |       |    |          |
| DEPARTMENT OF TRANSPORTATION SERVICES<br>CITY AND COUNTY OF HONOLULU<br>FEDERAL AID NO. STP-0001(30)<br><b>COMPUTERIZED TRAFFIC CONTROL SYSTEM<br/>PHASE 9</b><br><br>KAMEHAMEHA HWY/WILLIAM HENRY ROAD/KEAHALA ROAD<br>AND KAMEHAMEHA HWY/KEOLE ST INTERSECTION CCTV PLANS<br><br>ENGINEER: GTN      DATE: MARCH 2007<br>DRAFTSMAN: SS      SCALE: AS NOTED<br>APPROVED:      REF:      APPROVED:<br>DIRECTOR:      DIVISION ENGINEER: |      |       |    |          |