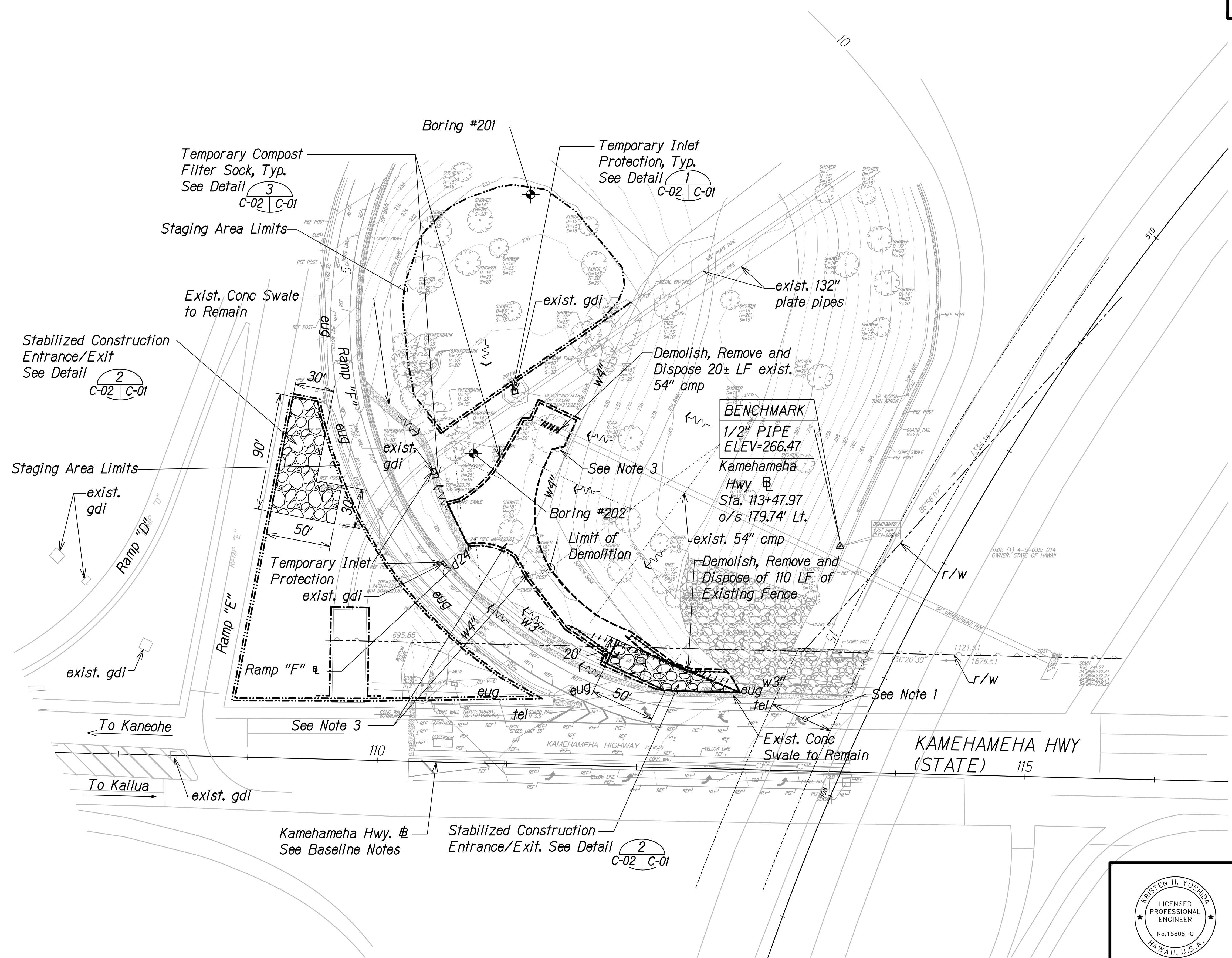


FED. ROAD DIST. NO.	STATE	PROJ. NO.	FISCAL YEAR	SHEET NO.	TOTAL SHEETS
HAWAII	HAW.	HWY-O-05-18	2018	15	25



- Notes:**
1. Approximate limits of H-3 deck above.
 2. For Erosion Control and BMP Notes and Details see Sheets N-08 thru N-11 and C-01.
 3. See L-02 for tree disposition.
- Baseline Notes:**
- Kamehameha Hwy. \mathbb{B} information taken from "Construction Plans for a Portion of Interstate Route H-3 Halekou Interchange", Project No. I-IR-H3-1(24)11, 1982.

SURVEY PLOTTED BY	DATE
DRAWN BY	
DESIGNED BY	
CHECKED BY	
ORIGINAL PLAN	
NOTE BOOK	
No.	

TEMPORARY EROSION CONTROL AND DEMOLITION PLAN
PID 505421 (PBMP C)
Scale: 1"=40'-0"

4/30/20
EXP DATE

THIS WORK WAS PREPARED BY ME
OR UNDER MY SUPERVISION

STATE OF HAWAII
DEPARTMENT OF TRANSPORTATION
HIGHWAYS DIVISION

**TEMPORARY EROSION CONTROL AND
DEMOLITION PLAN PID 505421 (PBMP C)**

**MISCELLANEOUS PERMANENT
BEST MANAGEMENT PRACTICES, PHASE 2B**

Project No. HWY-O-05-18

Scale: 1"=40' Date: April 2018

SHEET No. **C-02** OF **7** SHEETS