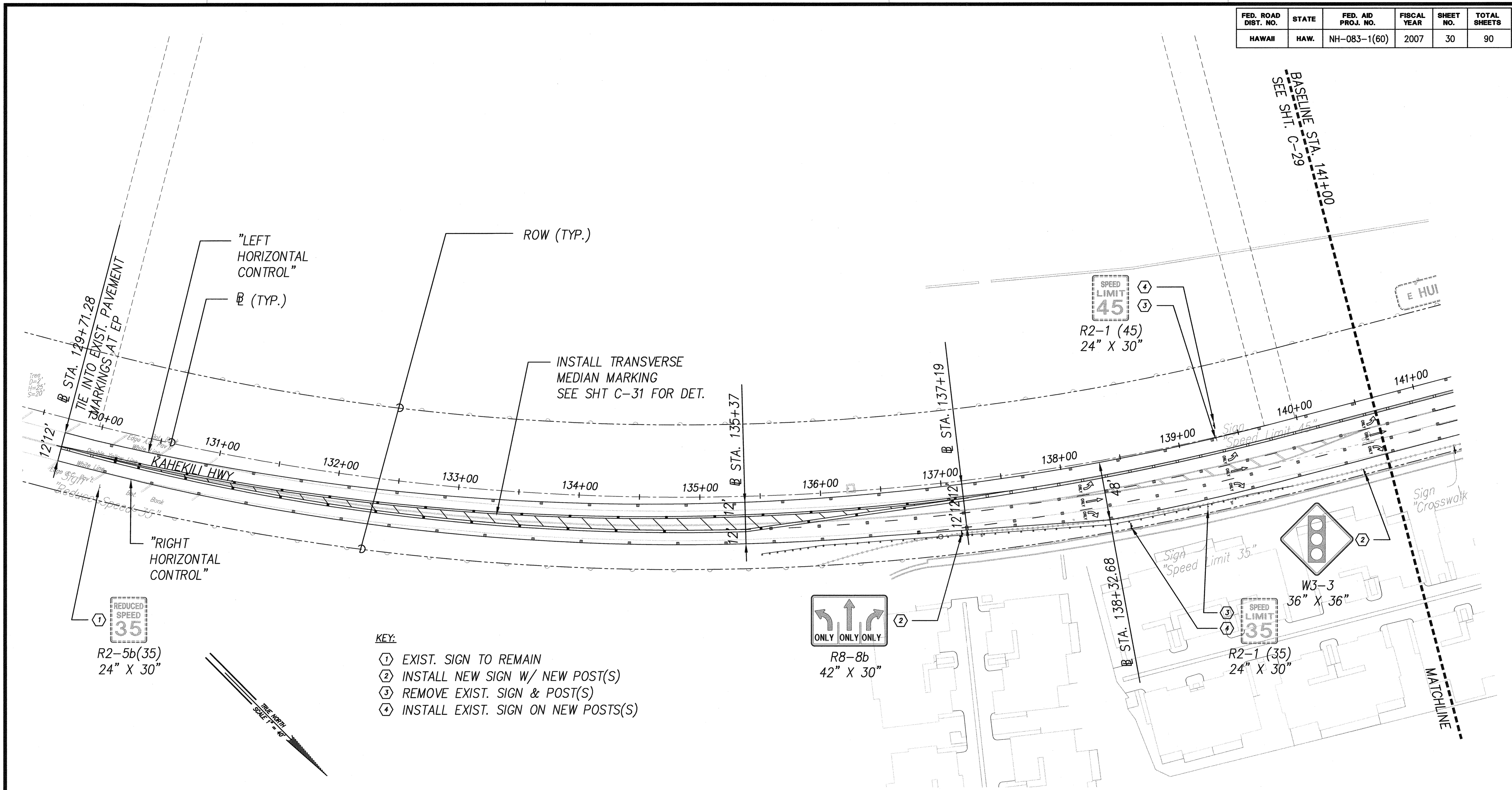
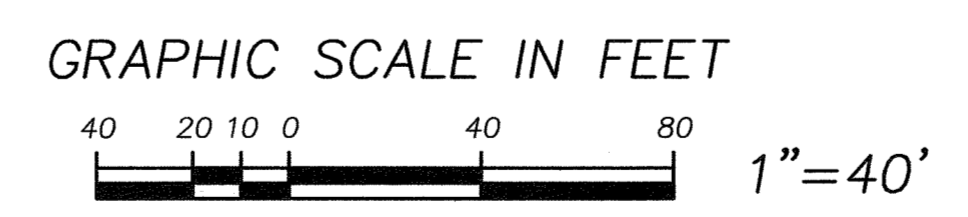


FED. ROAD DIST. NO.	STATE	FED. AID PROJ. NO.	FISCAL YEAR	SHEET NO.	TOTAL SHEETS
HAWAII	HAW.	NH-083-1(60)	2007	30	90



- KEY:**
- ① EXIST. SIGN TO REMAIN
  - ② INSTALL NEW SIGN W/ NEW POST(S)
  - ③ REMOVE EXIST. SIGN & POST(S)
  - ④ INSTALL EXIST. SIGN ON NEW POSTS(S)

**SIGNED & PAVEMENT MARKING PLAN**



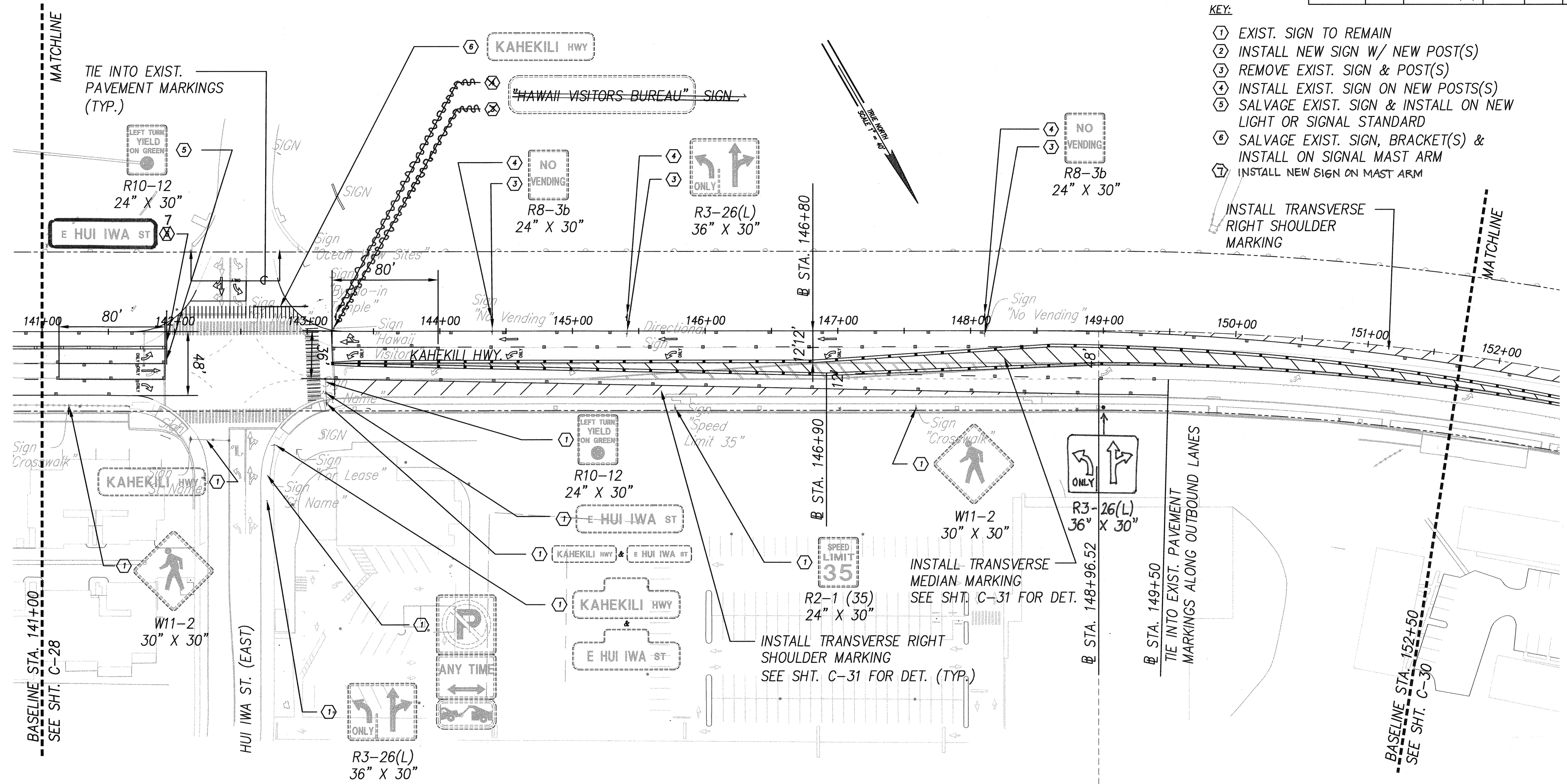
SURVEY PLOTTED BY	DATE
DRAWN BY	
DESIGNED BY	
CHECKED BY	
ORIGINAL PLAN	
NOTE BOOK	
No.	

**KENNETH O. MACAL**  
 LICENSED PROFESSIONAL ENGINEER  
 No. 3265-C  
 HAWAII, U.S.A.  
 SIGNATURE  
 APRIL 30, 2008  
 EXPIRATION DATE OF LICENSE  
 THIS WORK WAS PREPARED BY ME OR UNDER MY SUPERVISION

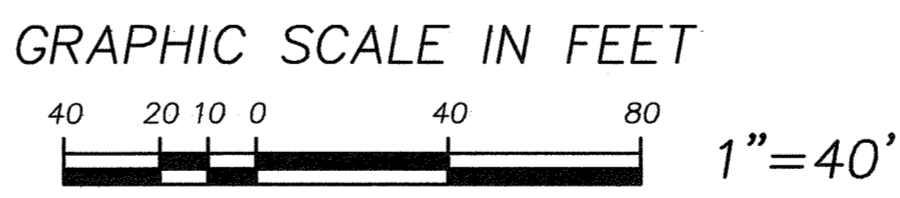
STATE OF HAWAII  
 DEPARTMENT OF TRANSPORTATION  
 HIGHWAYS DIVISION  
**SIGNED & PAVEMENT MARKING PLAN - 1**  
**KAHEKILI HIGHWAY**  
 KAHEKILI HIGHWAY INTERSECTION IMPROVEMENTS  
 VICINITY OF HUI IWA STREET  
 FEDERAL-AID PROJECT NO. NH-083-1(60)  
 SCALE: 1"=40' DATE: April 2007  
**SHEET No. C-28 OF 90 SHEETS**

FED. ROAD DIST. NO.	STATE	FED. AID PROJ. NO.	FISCAL YEAR	SHEET NO.	TOTAL SHEETS
HAWAII	HAW.	NH-083-1(60)	2007	31	90

- KEY:
- ① EXIST. SIGN TO REMAIN
  - ② INSTALL NEW SIGN W/ NEW POST(S)
  - ③ REMOVE EXIST. SIGN & POST(S)
  - ④ INSTALL EXIST. SIGN ON NEW POSTS(S)
  - ⑤ SALVAGE EXIST. SIGN & INSTALL ON NEW LIGHT OR SIGNAL STANDARD
  - ⑥ SALVAGE EXIST. SIGN, BRACKET(S) & INSTALL ON SIGNAL MAST ARM
  - ⑦ INSTALL NEW SIGN ON MAST ARM



**SIGNING & PAVEMENT MARKING PLAN**



SURVEY PLOTTED BY	DATE
DRAWN BY	
CHECKED BY	
NOTE BOOK	
No.	

KENNETH O. NAGEL  
 LICENSED PROFESSIONAL ENGINEER  
 No. 3265-C  
 HAWAII, U.S.A.

APRIL 30, 2008  
 EXPIRATION DATE OF LICENSE

THIS WORK WAS PREPARED BY ME OR UNDER MY SUPERVISION

STATE OF HAWAII  
 DEPARTMENT OF TRANSPORTATION  
 HIGHWAYS DIVISION

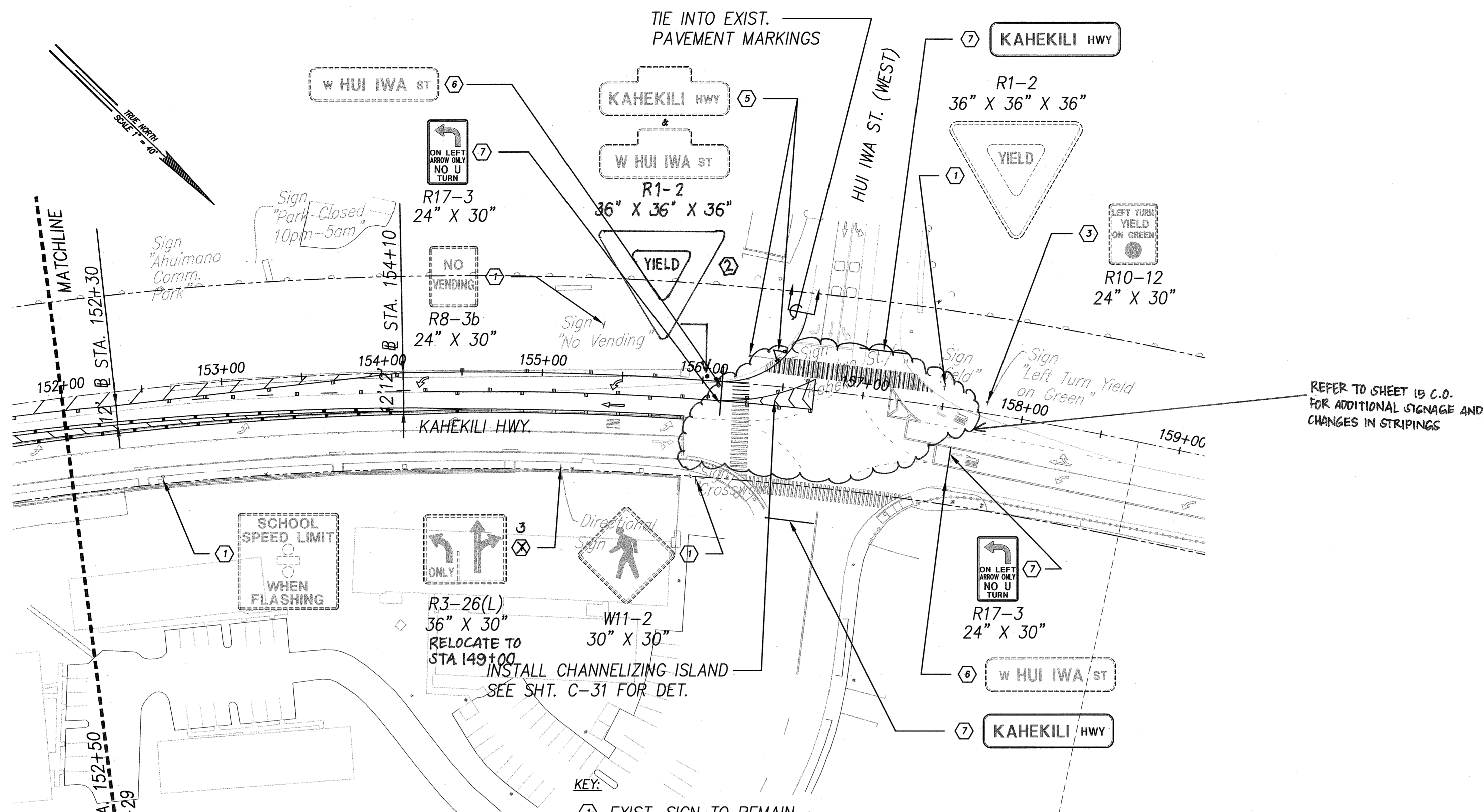
**SIGNING & PAVEMENT MARKING PLAN - 2**  
**KAHEKILI HIGHWAY**  
 KAHEKILI HIGHWAY INTERSECTION IMPROVEMENTS  
 VICINITY OF HUI IWA STREET  
 FEDERAL-AID PROJECT NO. NH-083-1(60)

SCALE: 1"=40' DATE: April 2007

**SHEET No. C-29 OF 90 SHEETS**

"AS-BUILT"

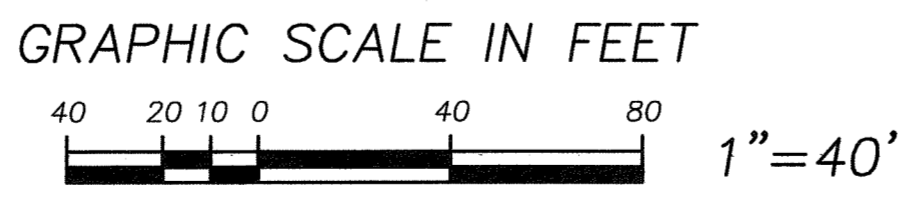
FED. ROAD DIST. NO.	STATE	FED. AID PROJ. NO.	FISCAL YEAR	SHEET NO.	TOTAL SHEETS
HAWAII	HAW.	NH-083-1(60)	2007	32	90



REFER TO SHEET IS C.O.  
FOR ADDITIONAL SIGNAGE AND  
CHANGES IN STRIPINGS

- KEY:
- ① EXIST. SIGN TO REMAIN
  - ② INSTALL NEW SIGN W/ NEW POST(S)
  - ③ REMOVE EXIST. SIGN & POST(S)
  - ④ INSTALL EXIST. SIGN ON NEW POST(S)
  - ⑤ SALVAGE EXIST. SIGN & INSTALL ON NEW LIGHT OR SIGNAL STANDARD
  - ⑥ SALVAGE EXIST. SIGN, BRACKET(S) & INSTALL ON SIGNAL MAST ARM. ADD SIGN BRACKET, SEE SHT. C-32 FOR DET.
  - ⑦ INSTALL NEW SIGN ON MAST ARM

**SIGNING & PAVEMENT MARKING PLAN**



SURVEY PLOTTED BY	DATE
DRAWN BY	
DESIGNED BY	
CHECKED BY	
ORIGINAL PLAN	
NOTE BOOK	
No.	

KENNETH O. NAGAI  
LICENSED PROFESSIONAL ENGINEER  
No. 3265-C  
HAWAII, U.S.A.

*[Signature]*  
APRIL 30, 2008  
EXPIRATION DATE OF LICENSE

THIS WORK WAS PREPARED BY ME OR UNDER MY SUPERVISION

STATE OF HAWAII  
DEPARTMENT OF TRANSPORTATION  
HIGHWAYS DIVISION

**SIGNING & PAVEMENT MARKING PLAN - 3**

**KAHEKILI HIGHWAY**

KAHEKILI HIGHWAY INTERSECTION IMPROVEMENTS  
VICINITY OF HUI IWA STREET

FEDERAL-AID PROJECT NO. NH-083-1(60)

SCALE: 1"=40' DATE: April 2007

SHEET No. C-30 OF 90 SHEETS

"AS-BUILT"