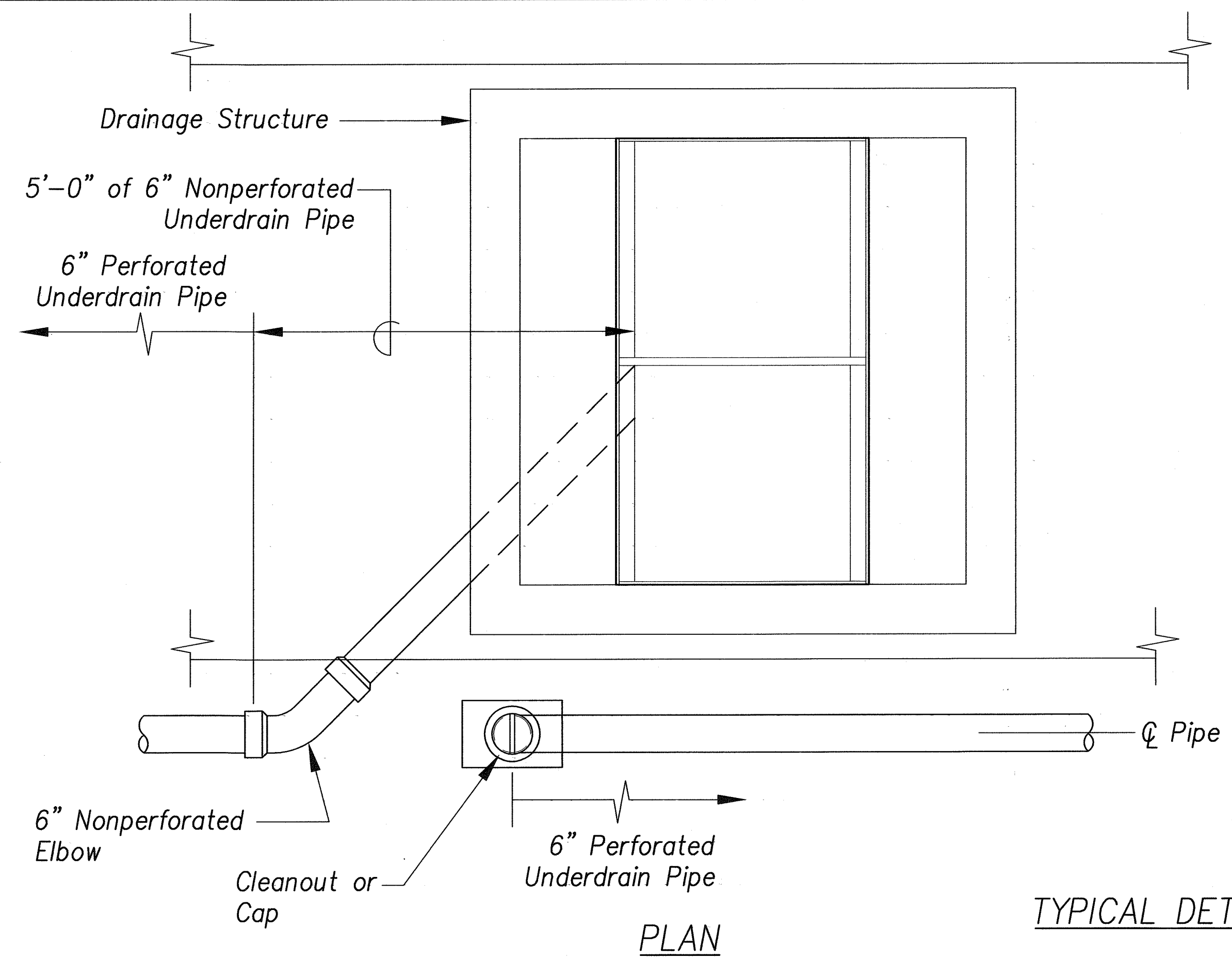
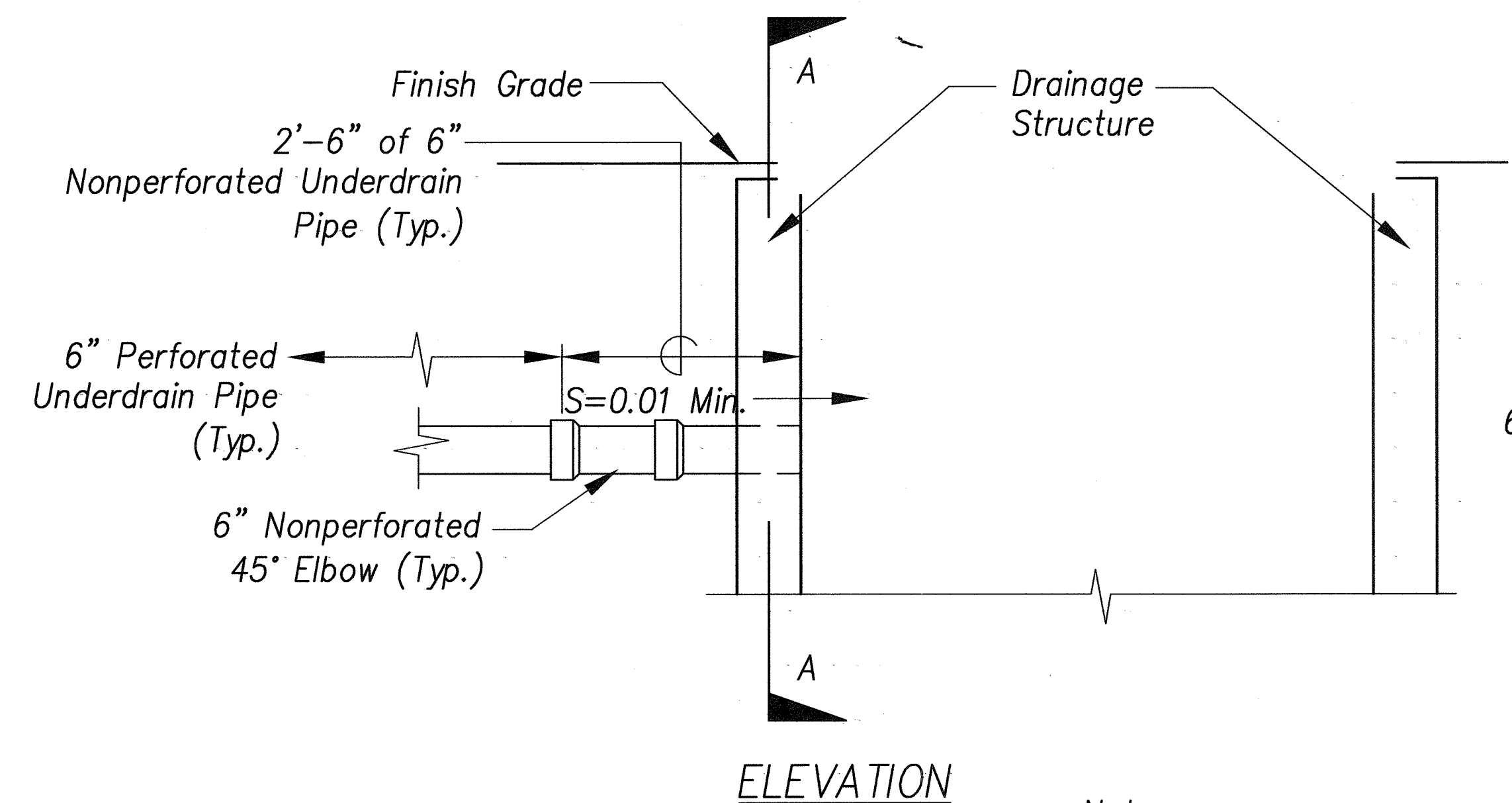


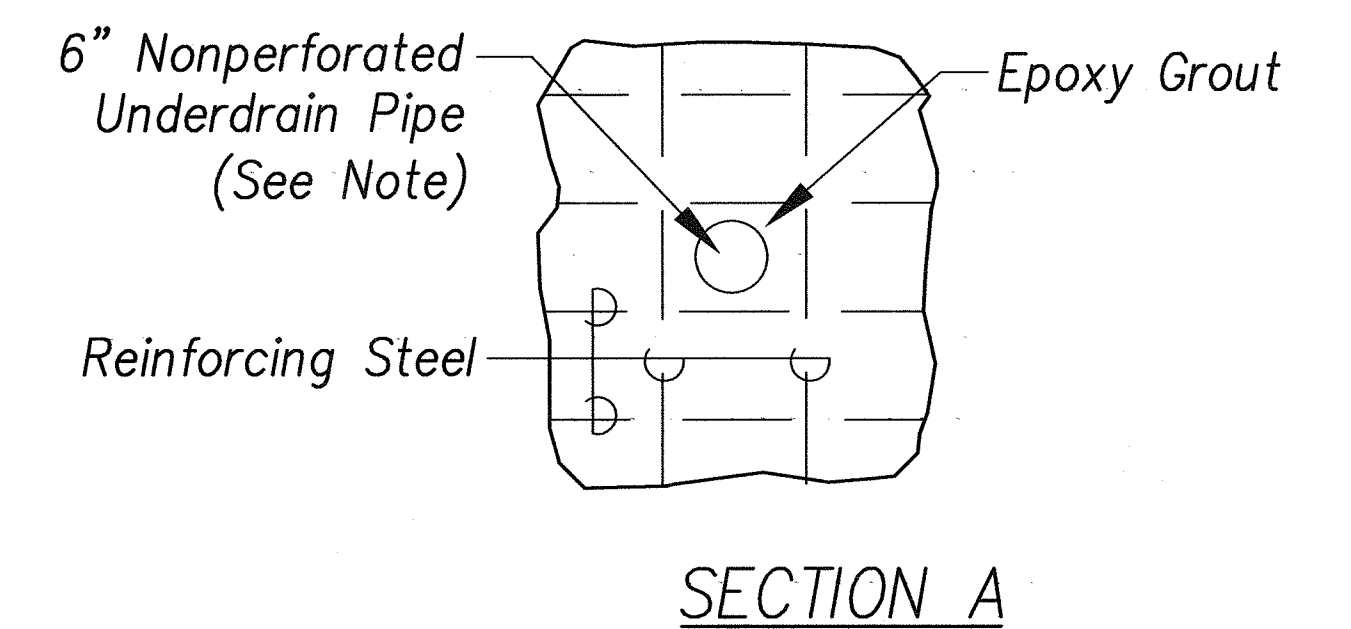
FED. ROAD DIST. NO.	STATE	FED. AID PROJ. NO.	FISCAL YEAR	SHEET NO.	TOTAL SHEETS
HAWAII	HAW.	NH-083-1(60)	2007	20	90



PLAN



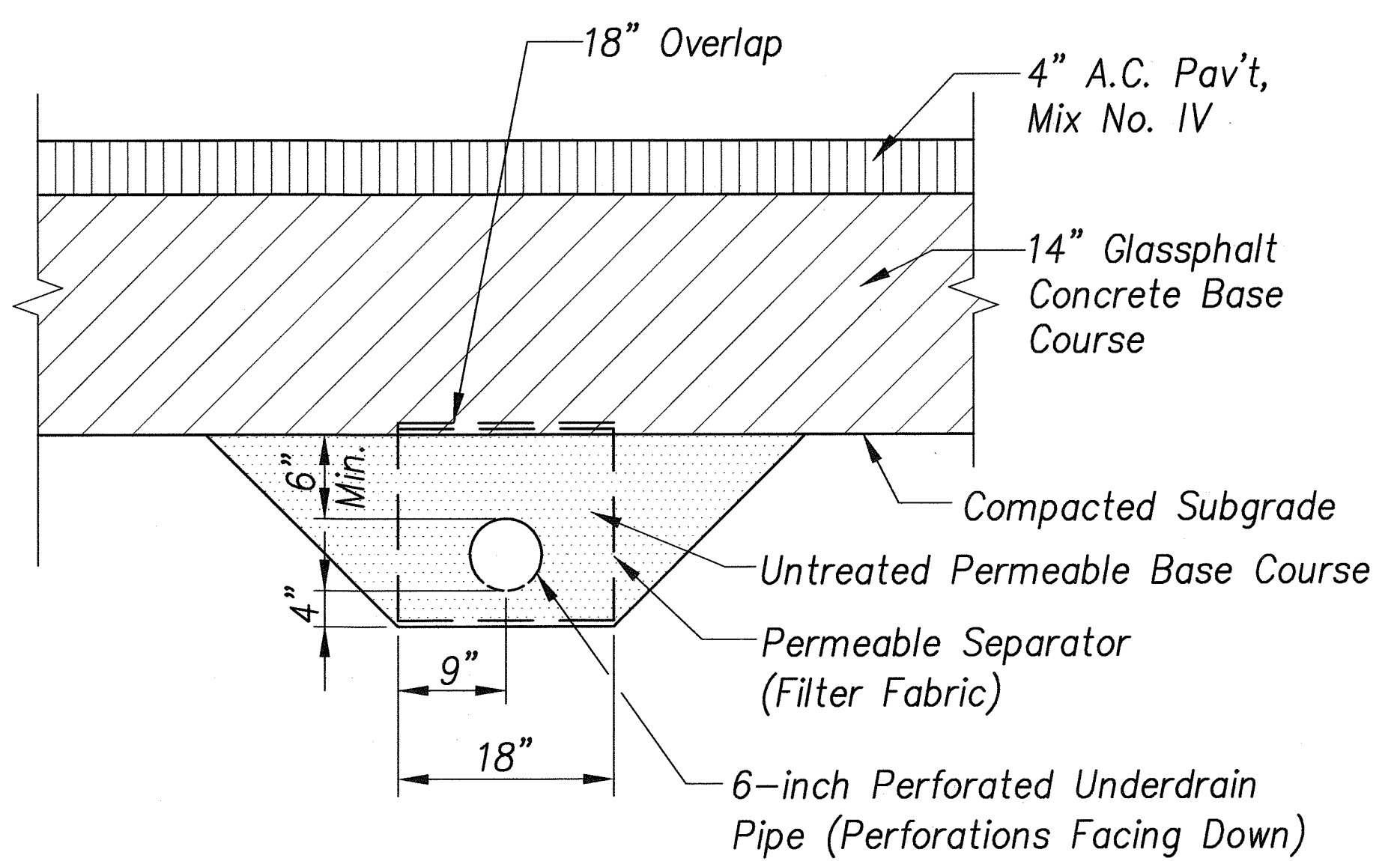
ELEVATION



Note:
The exact Invert location of the underdrain connection shall be adjusted to pass between the reinforcing steel.

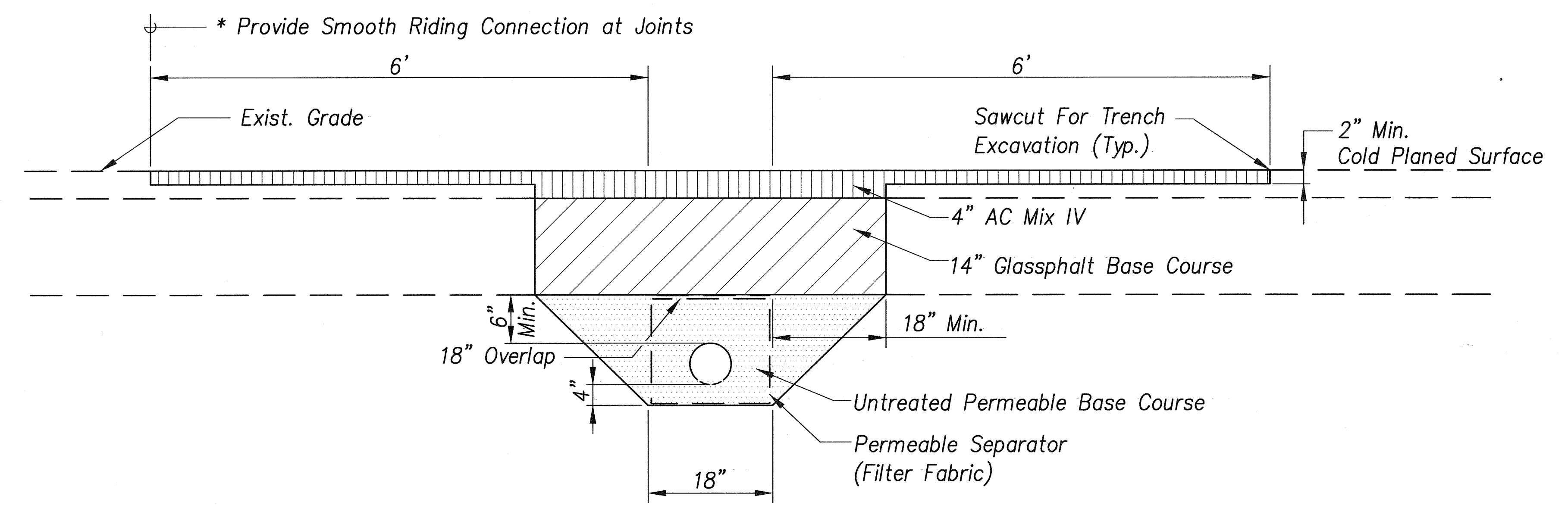
TYPICAL DETAILS OF 6" UNDERDRAIN CONNECTION TO DRAINAGE STRUCTURES

Scale: 3/4" = 1'-0"



TRANSVERSE UNDERDRAIN - NEW PAVEMENT

Scale: 1" = 1'-0"



TRANSVERSE UNDERDRAIN - EXISTING PAVEMENT

Scale: 1" = 1'-0"

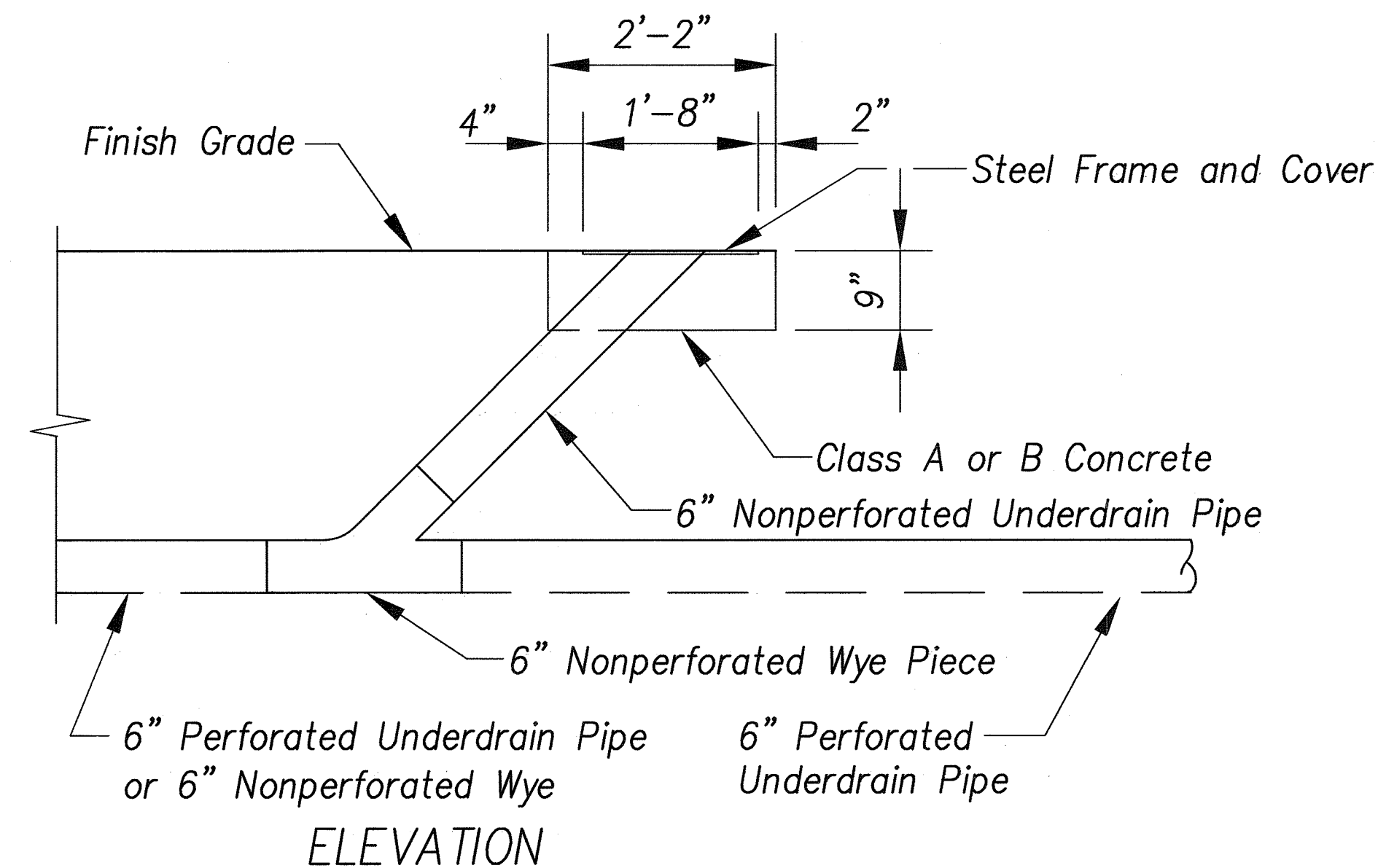
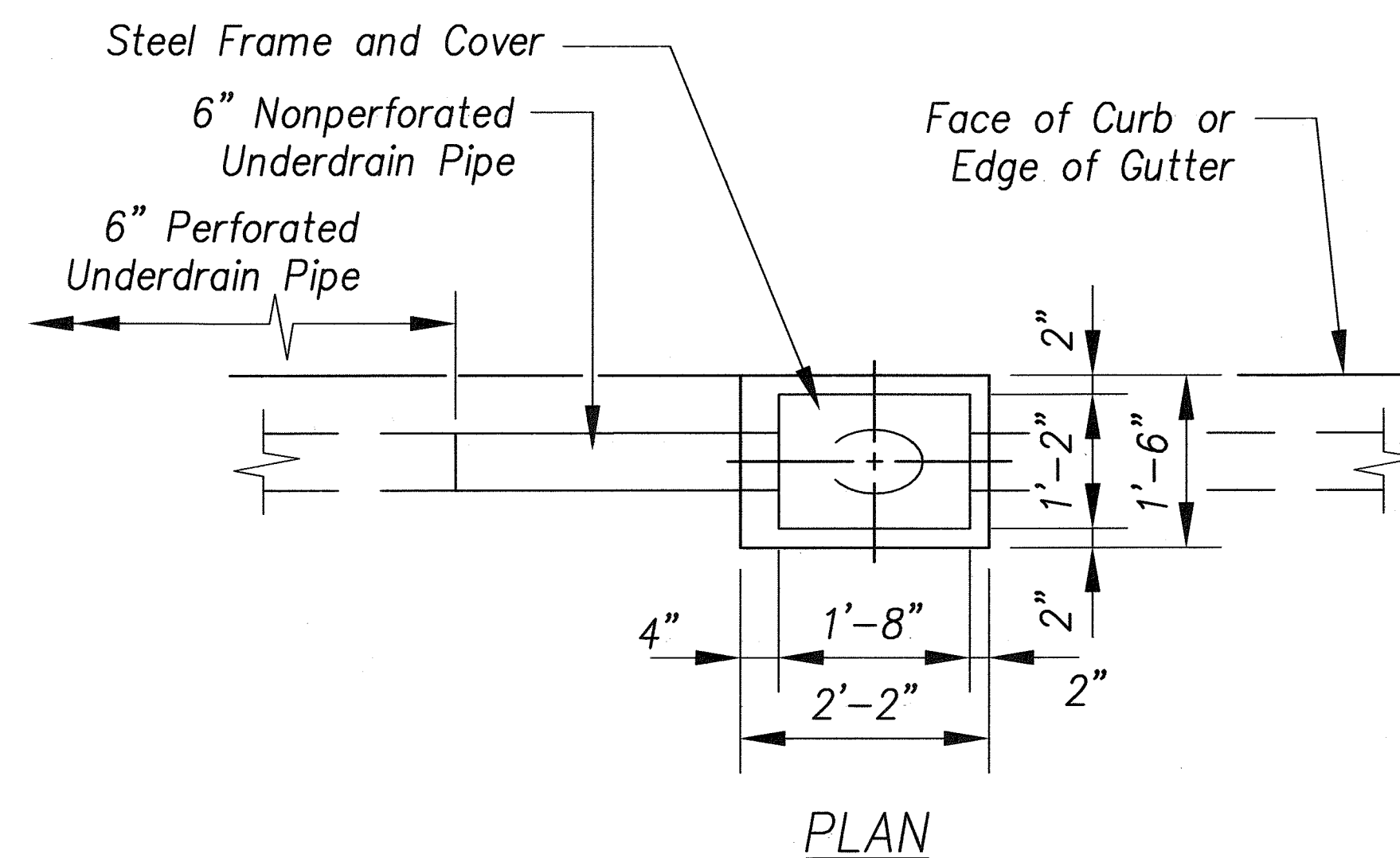
* Note:
Smoothness of paved surfaces: the distance from the paved surface to the testing edge of a ten-foot straight edge between two points of contact shall not exceed 3/16".

KENNETH O. NAGAI
LICENSED PROFESSIONAL ENGINEER
No. 3265-C
HAWAII, U.S.A.
APRIL 30, 2008
EXPIRATION DATE OF LICENSE
THIS WORK WAS PREPARED BY ME OR UNDER MY SUPERVISION

STATE OF HAWAII
DEPARTMENT OF TRANSPORTATION
HIGHWAYS DIVISION
DRAINAGE DETAILS
KAHEKILI HIGHWAY INTERSECTION IMPROVEMENTS
VICINITY OF HUI IWA STREET
FEDERAL-AID PROJECT NO. NH-083-1(60)
SCALE: AS NOTED DATE: April 2007
SHEET No. C-18 OF 90 SHEETS

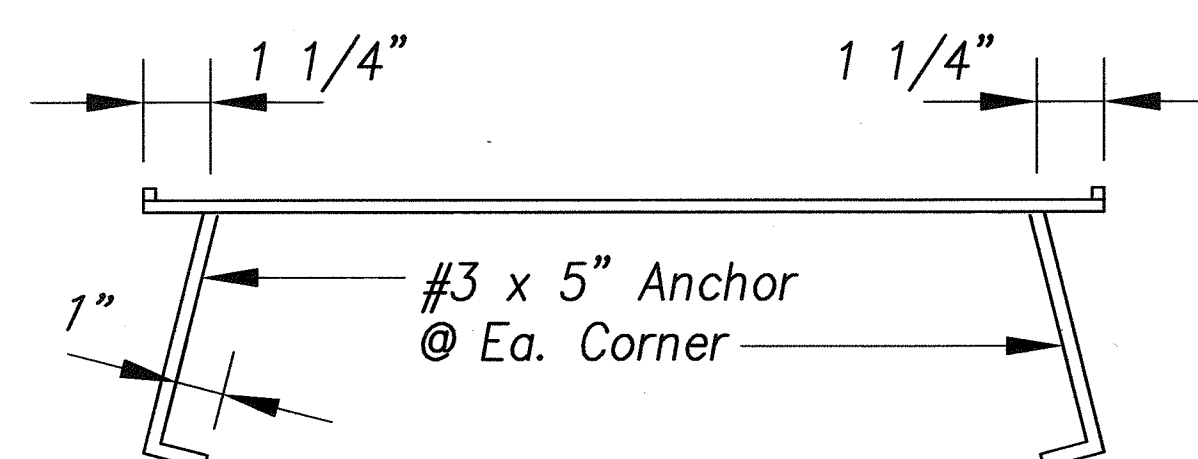
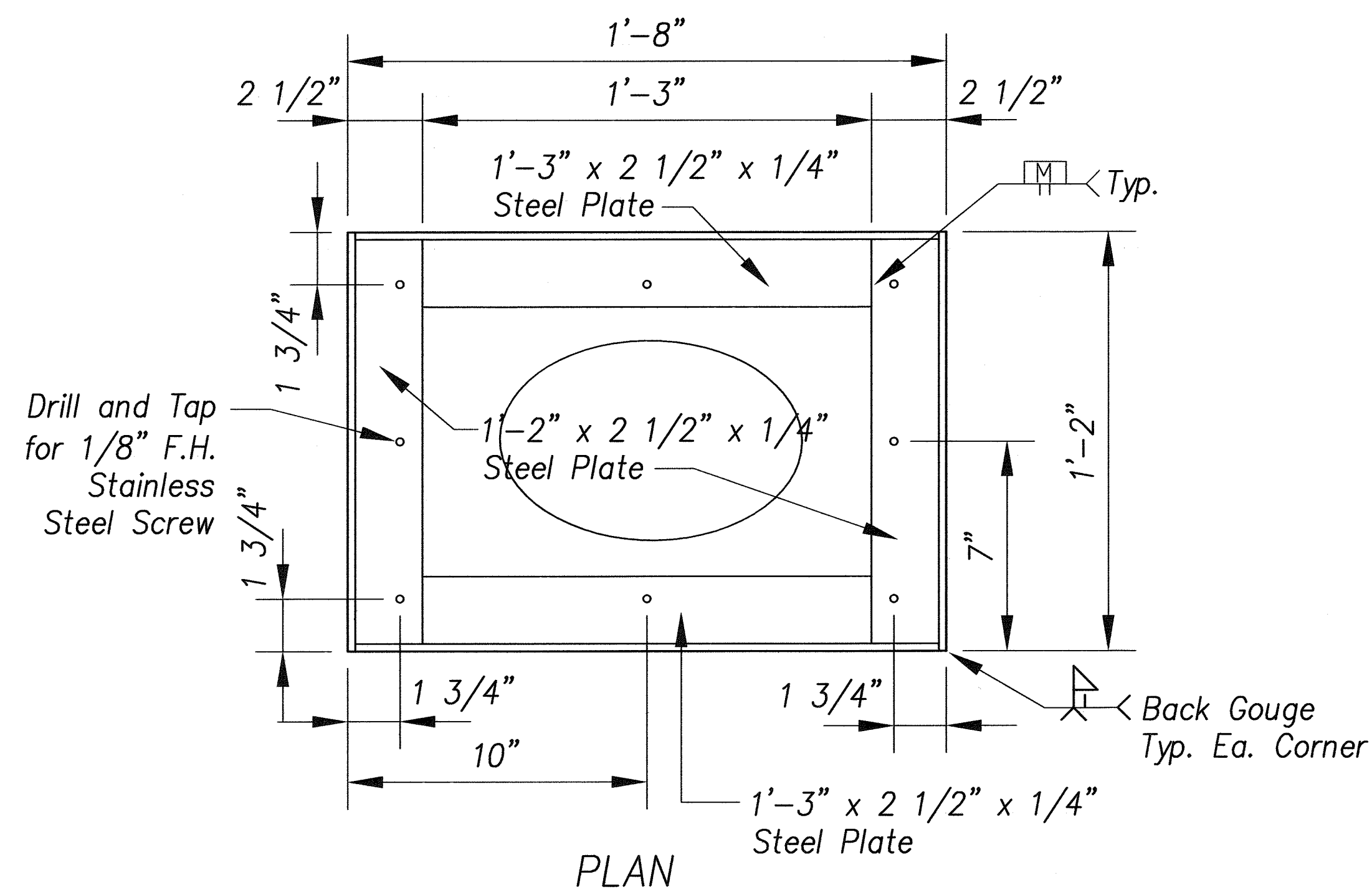
DESIGNED BY	DATE
TRACED BY	
QUANTITIES BY	
CHECKED BY	
ORIGINAL PLAN	
NOTE BOOK	
No.	

FED. ROAD DIST. NO.	STATE	FED. AID PROJ. NO.	FISCAL YEAR	SHEET NO.	TOTAL SHEETS
HAWAII	HAW.	NH-083-1(60)	2007	21	90



TYPICAL DETAILS OF CLEANOUT ALONG UNDERDRAIN

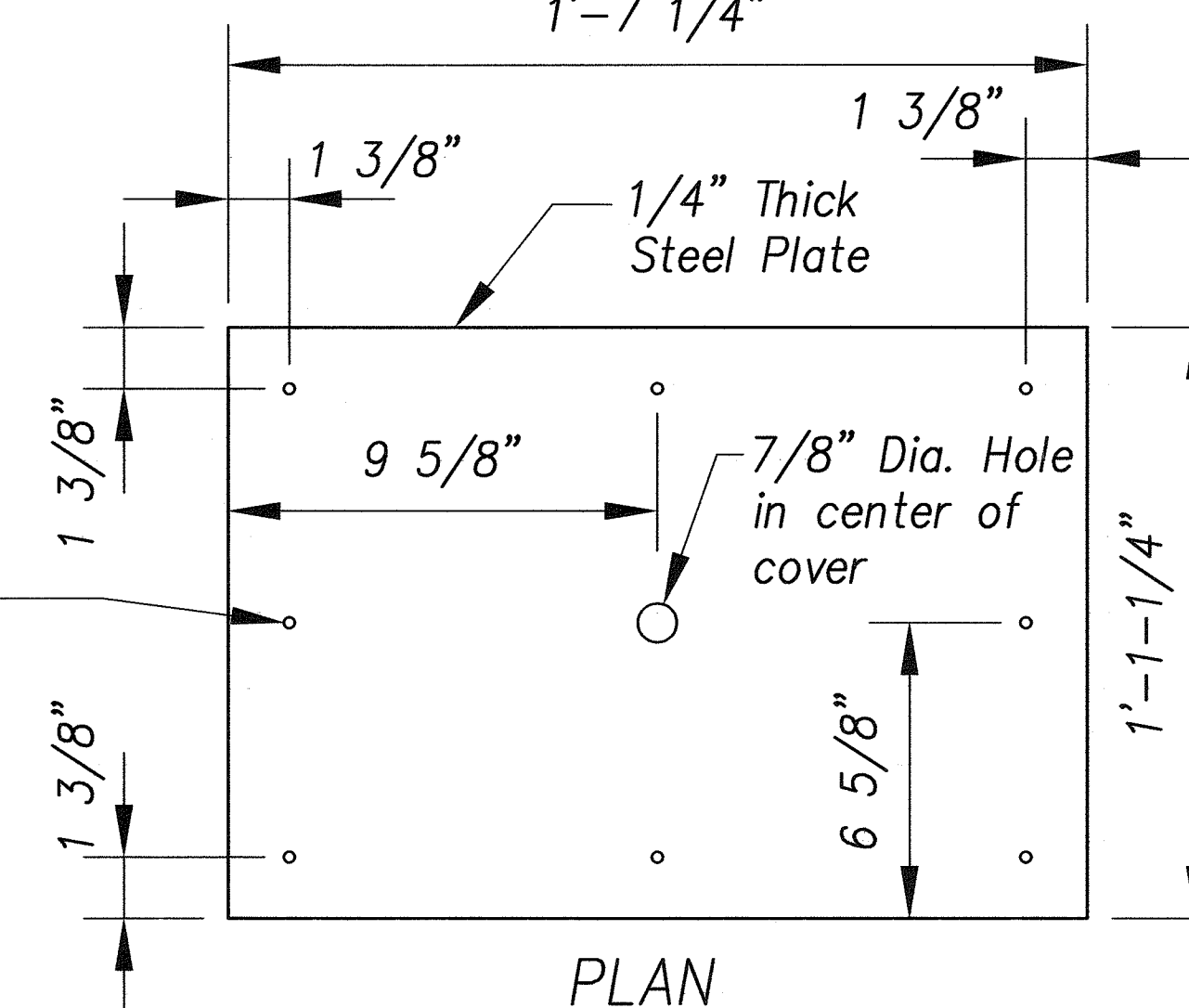
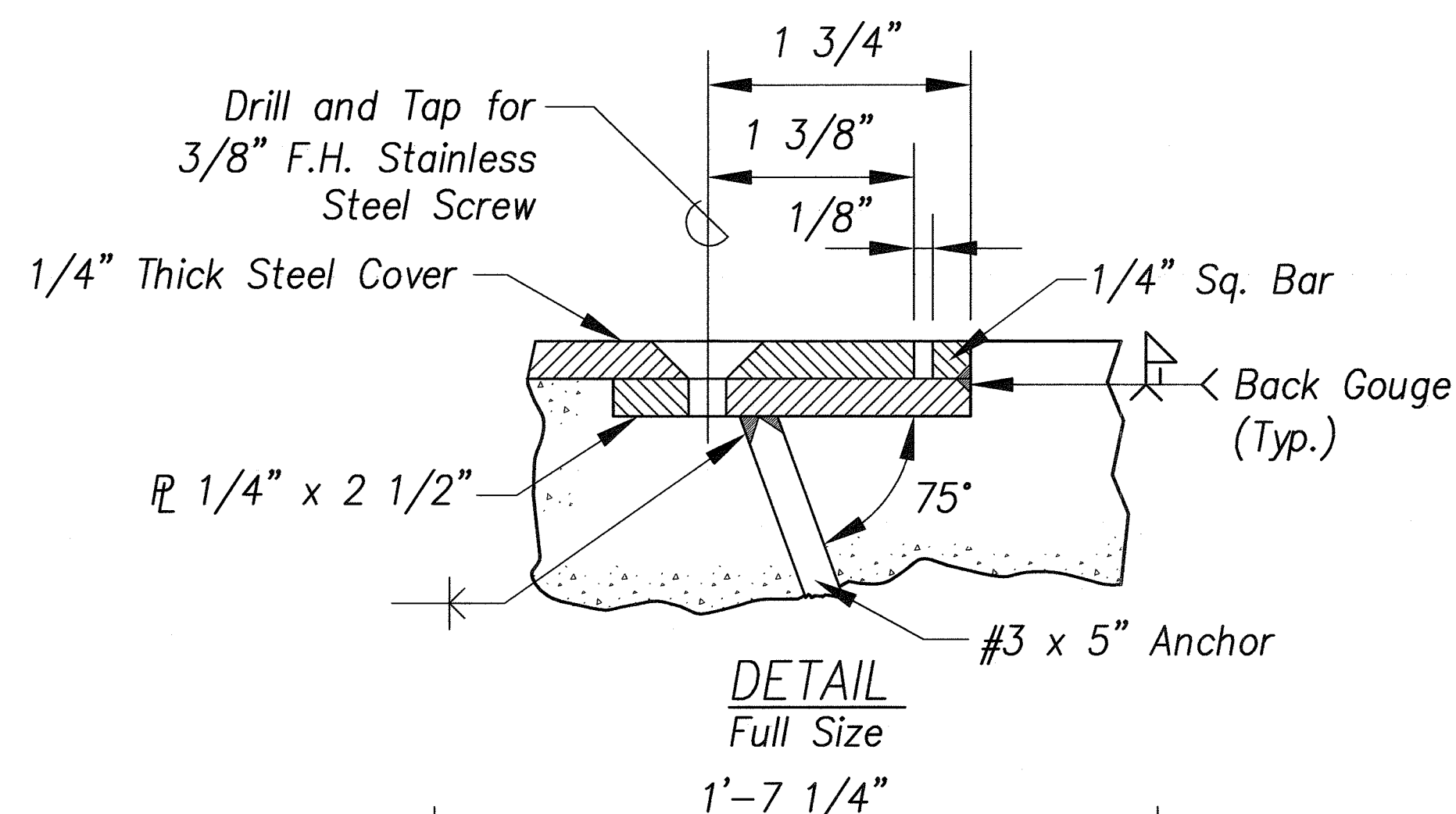
Scale: 3/4" = 1'-0"



DETAILS OF STEEL FRAME

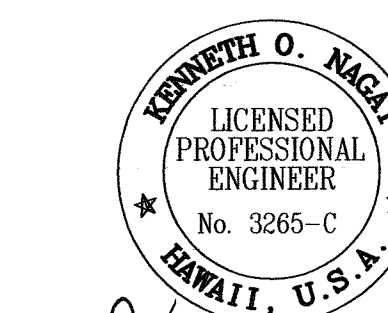
DETAILS OF STEEL FRAME AND COVER FOR CLEANOUT

Scale: 3" = 1'-0"



DETAILS OF STEEL COVER

Note:
All Steel Parts Shall Be Galvanized In Accordance
With The Requirements Of ASTM A123.



STATE OF HAWAII
DEPARTMENT OF TRANSPORTATION
HIGHWAYS DIVISION

DRAINAGE DETAILS

KAHEKILL HIGHWAY INTERSECTION IMPROVEMENTS
VICINITY OF HUI IWA STREET
FEDERAL-AID PROJECT NO. NH-083-1(60)

SCALE: AS NOTED DATE: April 2007

SHEET No. C-19 OF 90 SHEETS