

3/19/2020

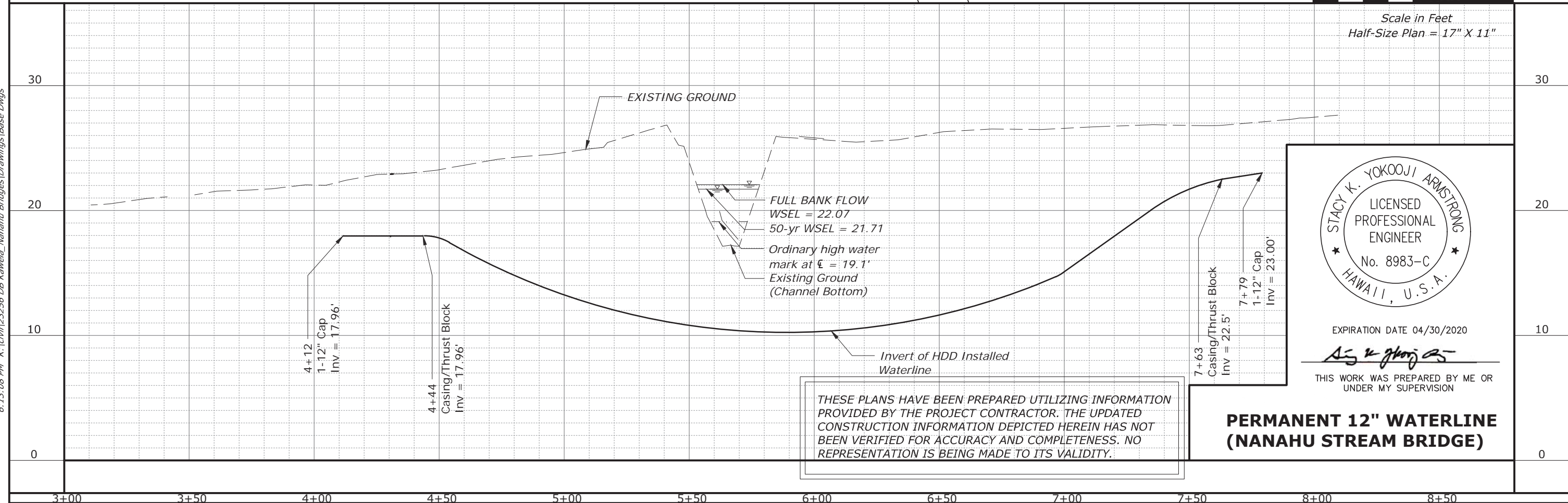
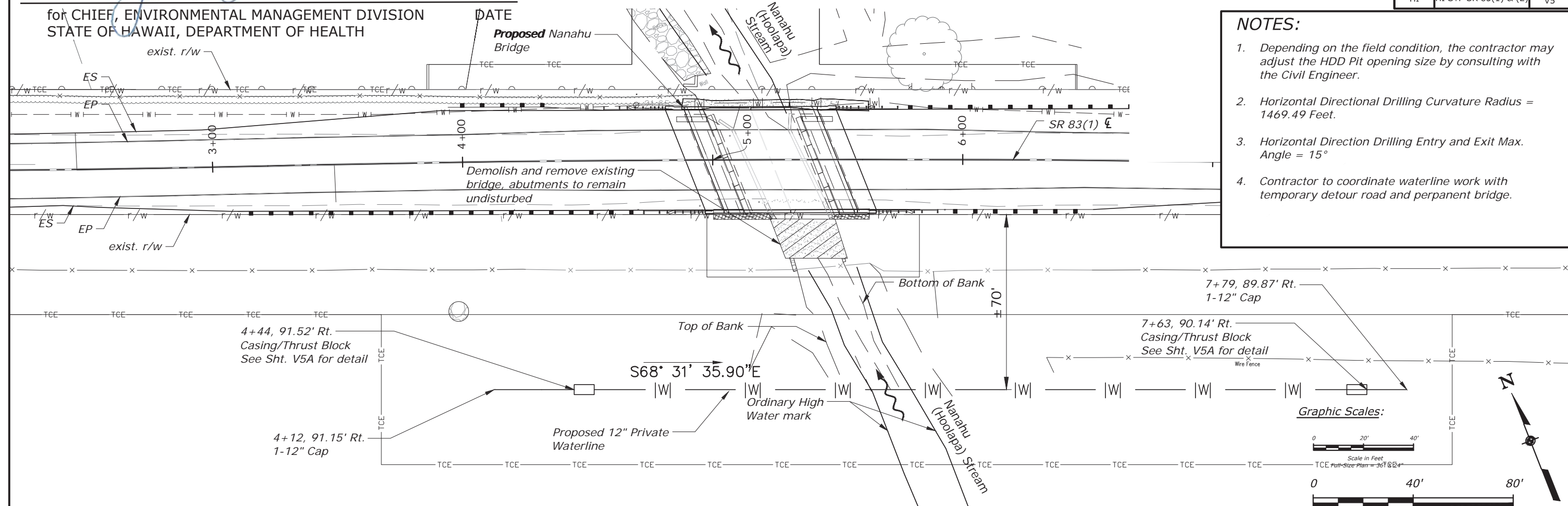
for CHIEF, ENVIRONMENTAL MANAGEMENT DIVISION
STATE OF HAWAII, DEPARTMENT OF HEALTH

DATE _____

Proposed Nanahu
Bridge

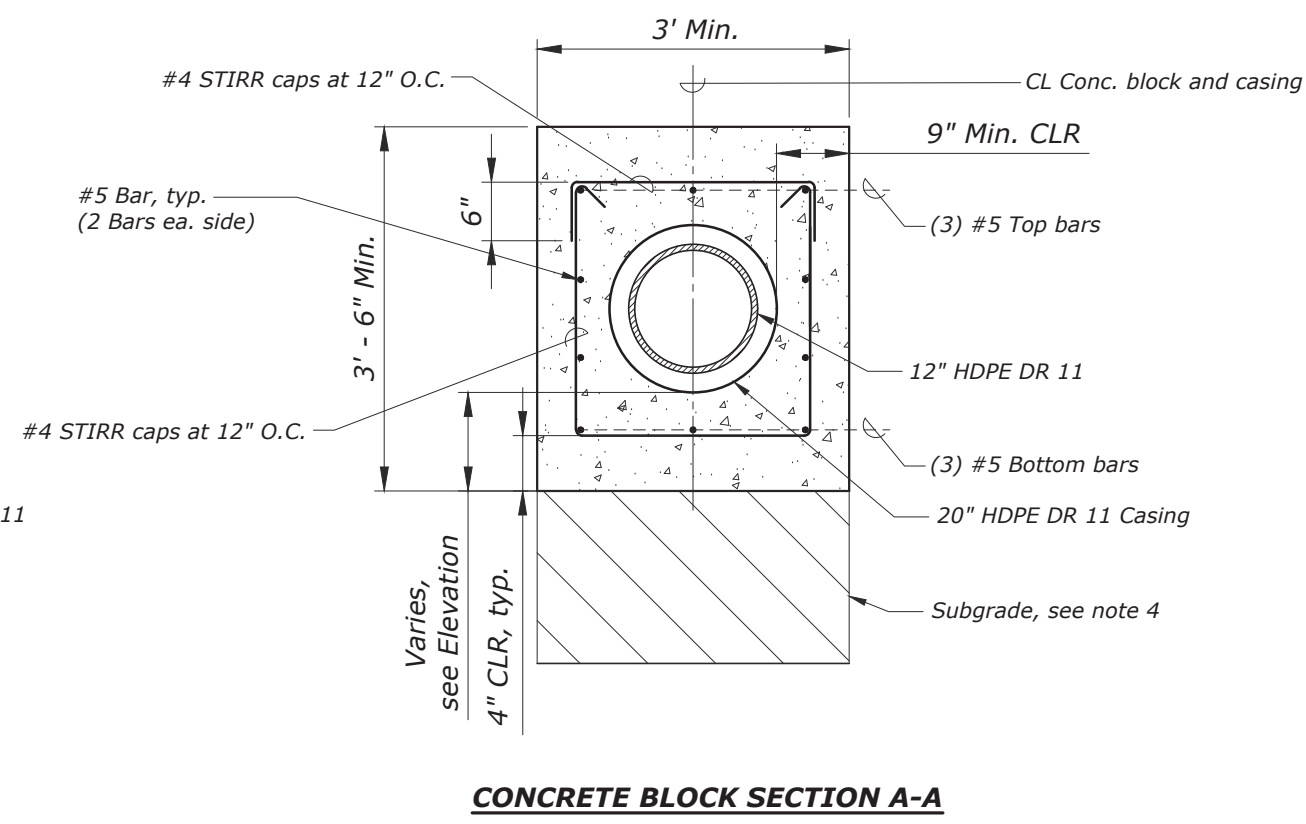
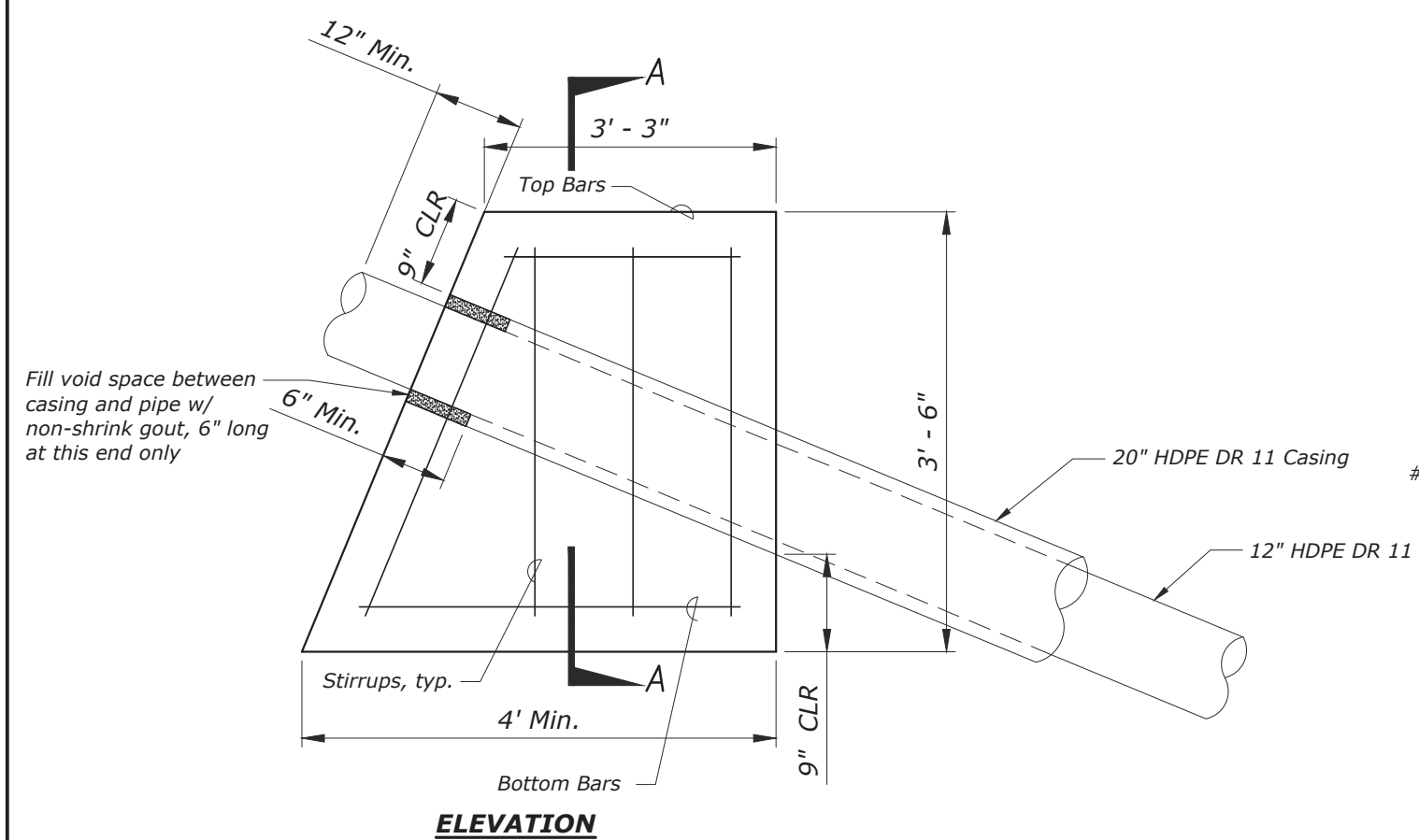
NOTES:

1. *Depending on the field condition, the contractor may adjust the HDD Pit opening size by consulting with the Civil Engineer.*
2. *Horizontal Directional Drilling Curvature Radius = 1469.49 Feet.*
3. *Horizontal Direction Drilling Entry and Exit Max. Angle = 15°*
4. *Contractor to coordinate waterline work with temporary detour road and perpanent bridge.*



6:13:08 PM K:\civill\23256 DB Kawela_Nanahu Bridges\Drawings\Base Dwgs

AS-BUILT DRAWINGS



CONCRETE BLOCK FOR END DIRECTIONAL DRILLING

CONCRETE BLOCK NOTES:

1. Unless otherwise noted, all materials and construction shall conform to the City and County of Honolulu, Board of Water Supply's "Water System Standards", dated 2002 and all subsequent amendments and additions.
2. Concrete shall have a minimum 28-day compressive strength $f'_c = 4,500$ psi min. and water-cement ratio of 0.45 max. Submit concrete mix design for designer on record review.
3. Reinforcing steel bars shall be ASTM A615, grade 60.
4. Bottom of trench shall be overexcavated at least 24 inches deep and backfilled with 3/8" Pea Gravel wrapped in a suitable geo-fabric material.
5. Trench excavation shall be kept dry prior to placing reinforcing steel and during placement and curing (7 days minimum) of concrete. For sheathing, dewatering and trench subgrade preparation, see Water System Standards.

THESE PLANS HAVE BEEN PREPARED UTILIZING INFORMATION PROVIDED BY THE PROJECT CONTRACTOR. THE UPDATED CONSTRUCTION INFORMATION DEPICTED HEREIN HAS NOT BEEN VERIFIED FOR ACCURACY AND COMPLETENESS. NO REPRESENTATION IS BEING MADE TO ITS VALIDITY.

for CHIEF, ENVIRONMENTAL MANAGEMENT DIVISION
STATE OF HAWAII, DEPARTMENT OF HEALTH
DATE 3/19/2020



EXPIRATION DATE 04/30/2020
THIS WORK WAS PREPARED BY ME OR UNDER MY SUPERVISION AND CONSTRUCTION OF THIS PROJECT WILL BE UNDER MY OBSERVATION.

U.S. DEPARTMENT OF TRANSPORTATION FEDERAL HIGHWAY ADMINISTRATION CENTRAL FEDERAL LANDS HIGHWAY DIVISION	
U.S. CUSTOMARY SPECIAL	
CONCRETE BLOCK DETAIL	
	SPECIAL

5:53:42 PM K:\civil\23256 DB Kawela_Nanahu Bridges\Drawings\Base Dwg

AS-BUILT DRAWINGS