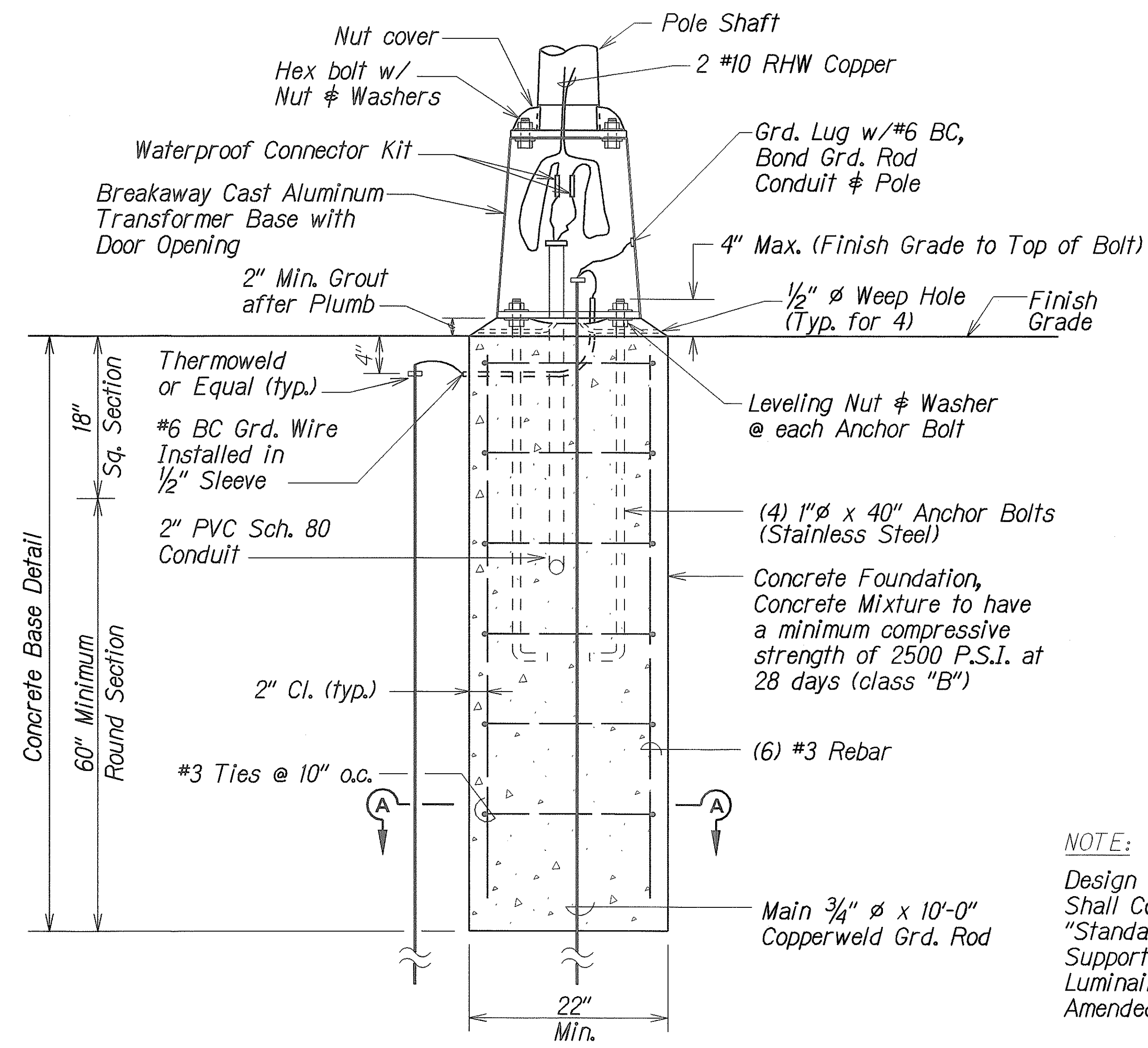
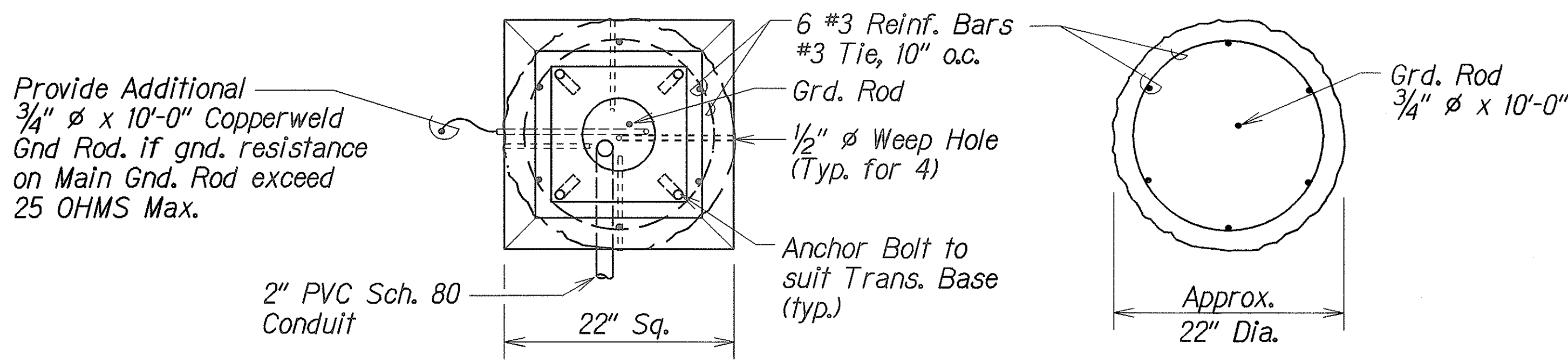


FED. ROAD DIST. NO.	STATE	PROJ. NO.	FISCAL YEAR	SHEET NO.	TOTAL SHEETS
HAWAII	HAW.	83F-01-99	2006	23	28



ELEVATION



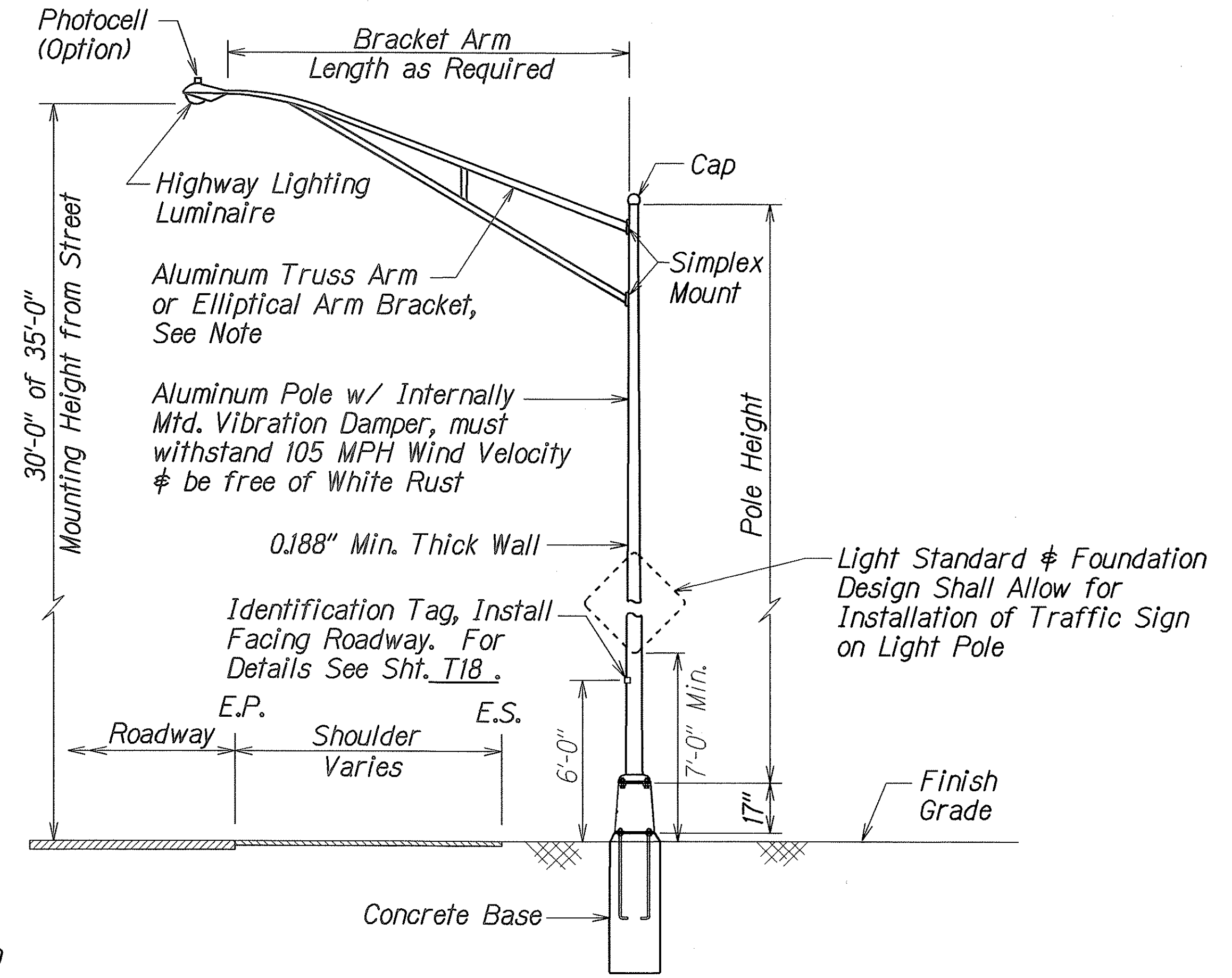
PLAN

SECTION A-A

**TYPICAL CONCRETE FOUNDATION AND TRANSFORMER BASE DETAIL**

Not to Scale

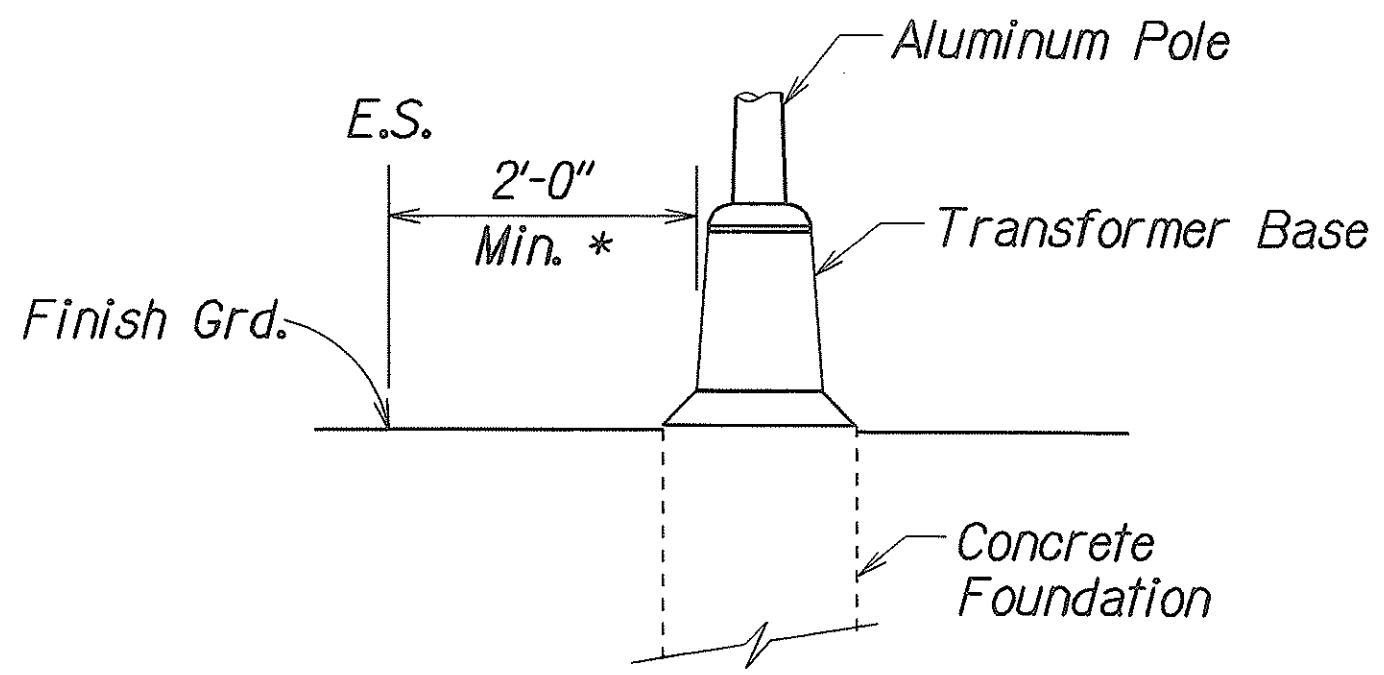
NOTE:  
Design of Light Standard & Foundation Shall Conform to Latest AASHTO "Standard Specifications for Structural Supports for Highway Signs, Luminaires and Traffic Signals", and as Amended by HDOT Hwy-DB Section.



NOTE:  
For 4' to 8' Arm, Use Elliptical Bracket Arm  
For 10' to 15' arm, Use Truss Bracket Arm

**TYPICAL LIGHT STANDARD INSTALLATION WITH TRANSFORMER BASE**

Not to Scale



\* - If 2'-0" min. can not be maintained due to conflict with other utilities, coordinate field adjustments with Engineer.

**HIGHWAY LIGHTING DETAIL**

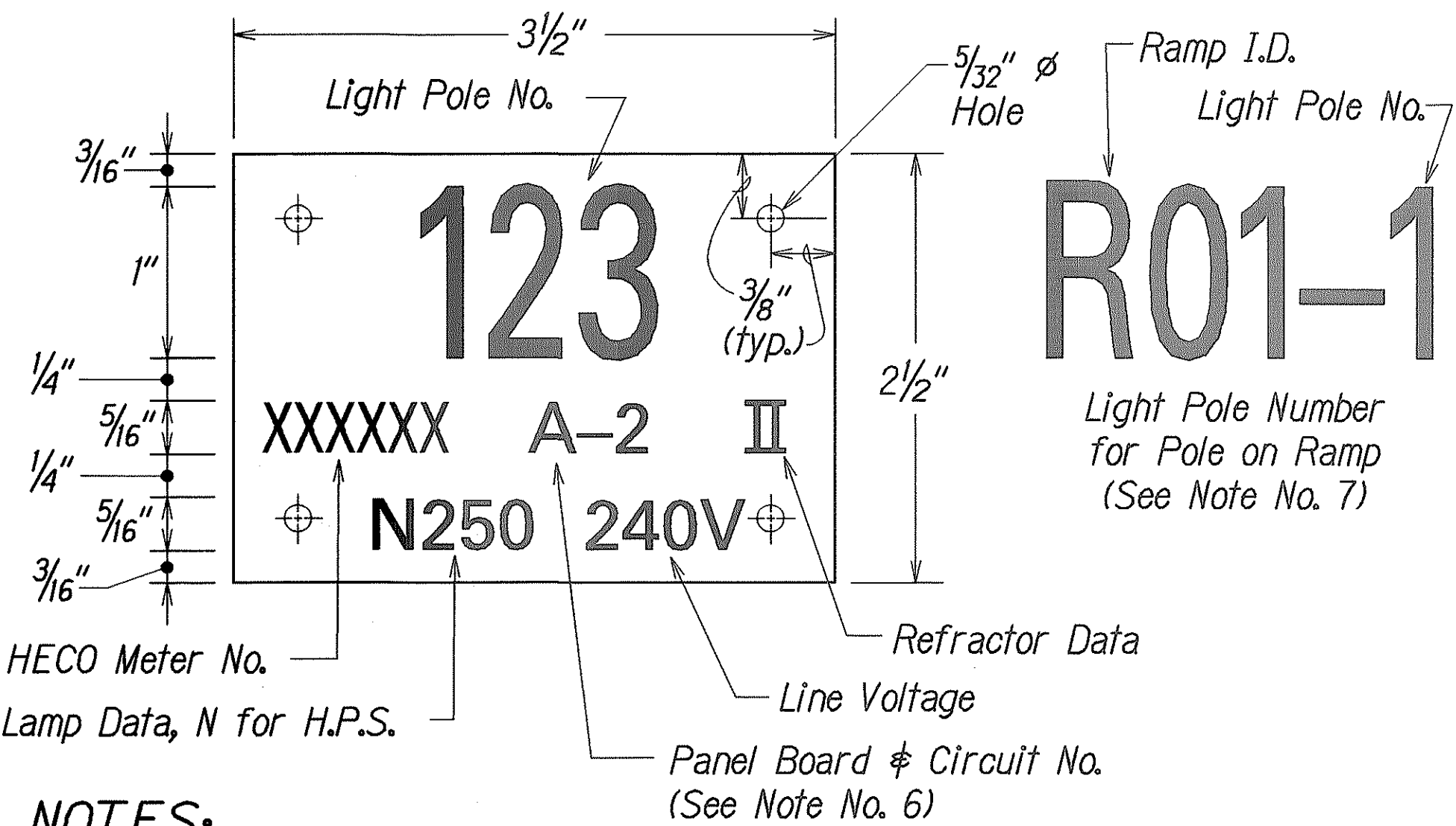
Not to Scale

STATE OF HAWAII  
DEPARTMENT OF TRANSPORTATION  
HIGHWAYS DIVISION  
**HIGHWAY LIGHTING DETAILS**  
KAMEHAMEHA HIGHWAY  
Intersection Improvements  
At Kahekili Highway  
Project No. 83F-01-99

Scale: As Noted Date: April, 2006

SHEET No. 1 OF 2 SHEETS

FED. ROAD DIST. NO.	STATE	PROJ. NO.	FISCAL YEAR	SHEET NO.	TOTAL SHEETS
HAWAII	HAW.	83F-01-99	2006	ADD.24	28



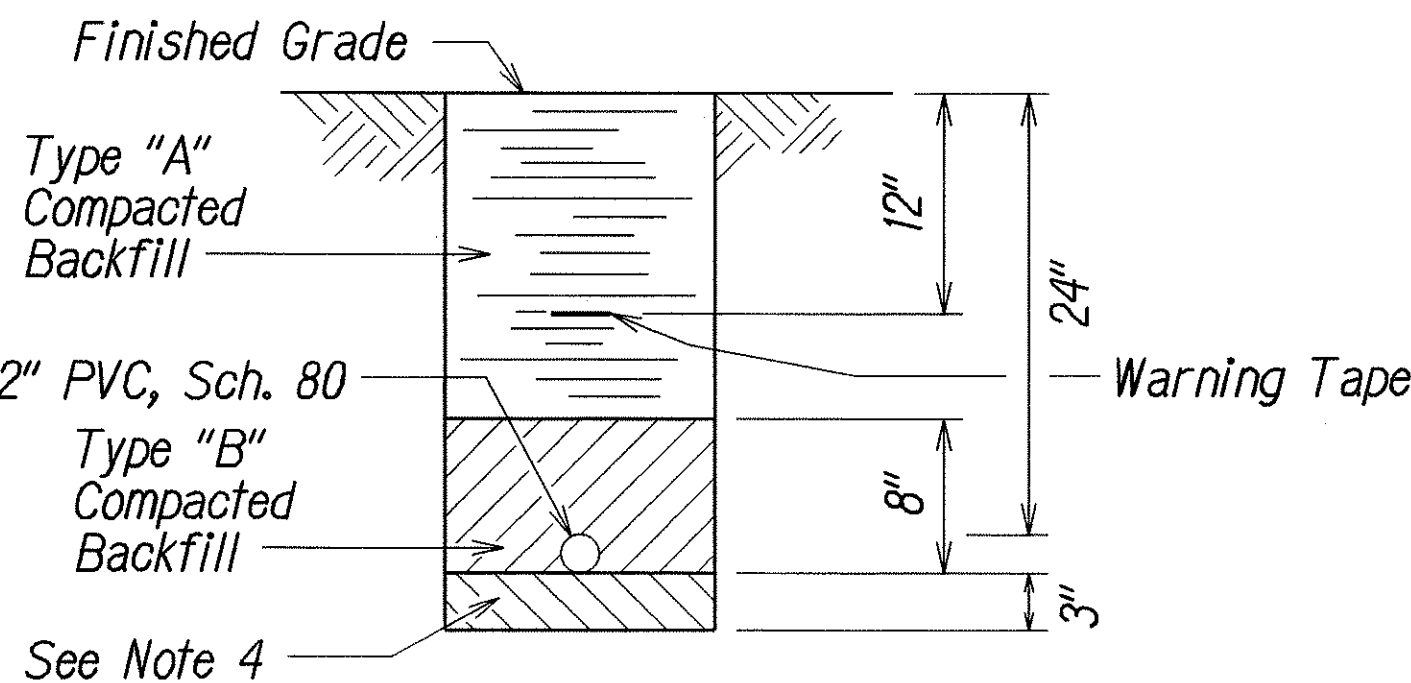
**NOTES:**

- Use 3 Ply Laminated Flexible Plastic Black-White-Black Thickness:  
0.010" - Black Cap Sheet  
0.052" - White Base Sheet  
0.010" - Black Base Sheet
- Light Number Size shall be 1-inch high and engraved 1/8" wide, White in color (Number as required).
- Nomenclature Size shall be 5/16" high and engraved 1/32" wide, White in color (HECO Vault No., Panel Board & Circuit No., Line Voltage, Lamp Data and Refractor Data as required).
- Attach to Aluminum and Steel Poles with no. 8 Stainless Steel, 1/2" long Drive Screws in 1/8" drilled hole. Attach to Wood Pole with 4D Aluminum Nails.
- Numbers are inscribed by cutting through "Black Cap Sheet" to expose "White Letters".
- Nomenclature required for systems with two or more circuits. Letter indicates Panel Board and Number indicates Circuit.
- For Light Poles installed on Ramp, assign Number to include Ramp I.D. and Pole Number. Legend may be less that one inch in height.
- Light Numbers shall be obtained from the State. Use an alphabet suffix to designate lights mounted on the same pole (e.g. 123A & 123).

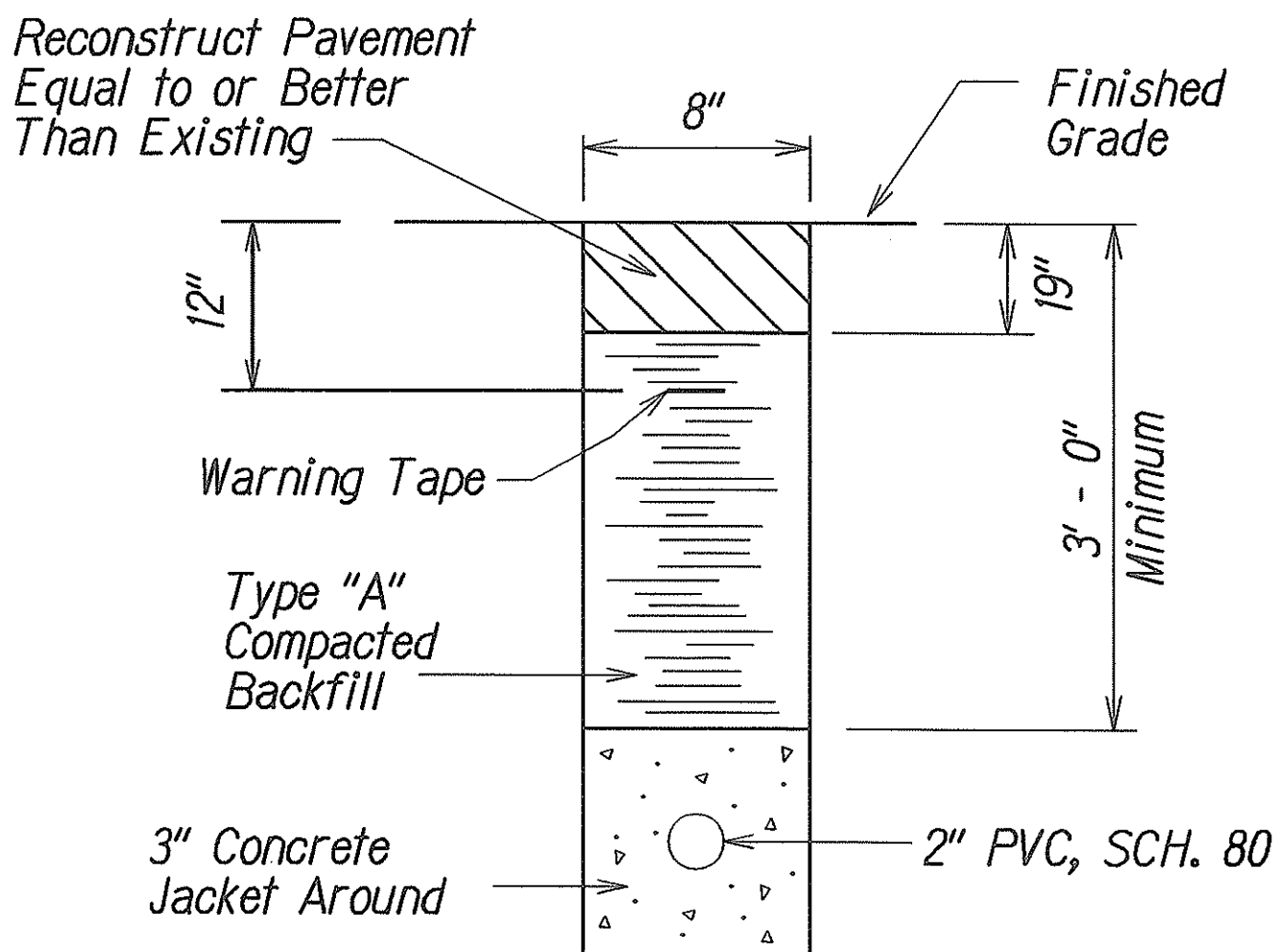
**HIGHWAY LIGHT POLE TAG DETAIL**  
**METERED SYSTEM**  
Not to Scale

**NOTES:**

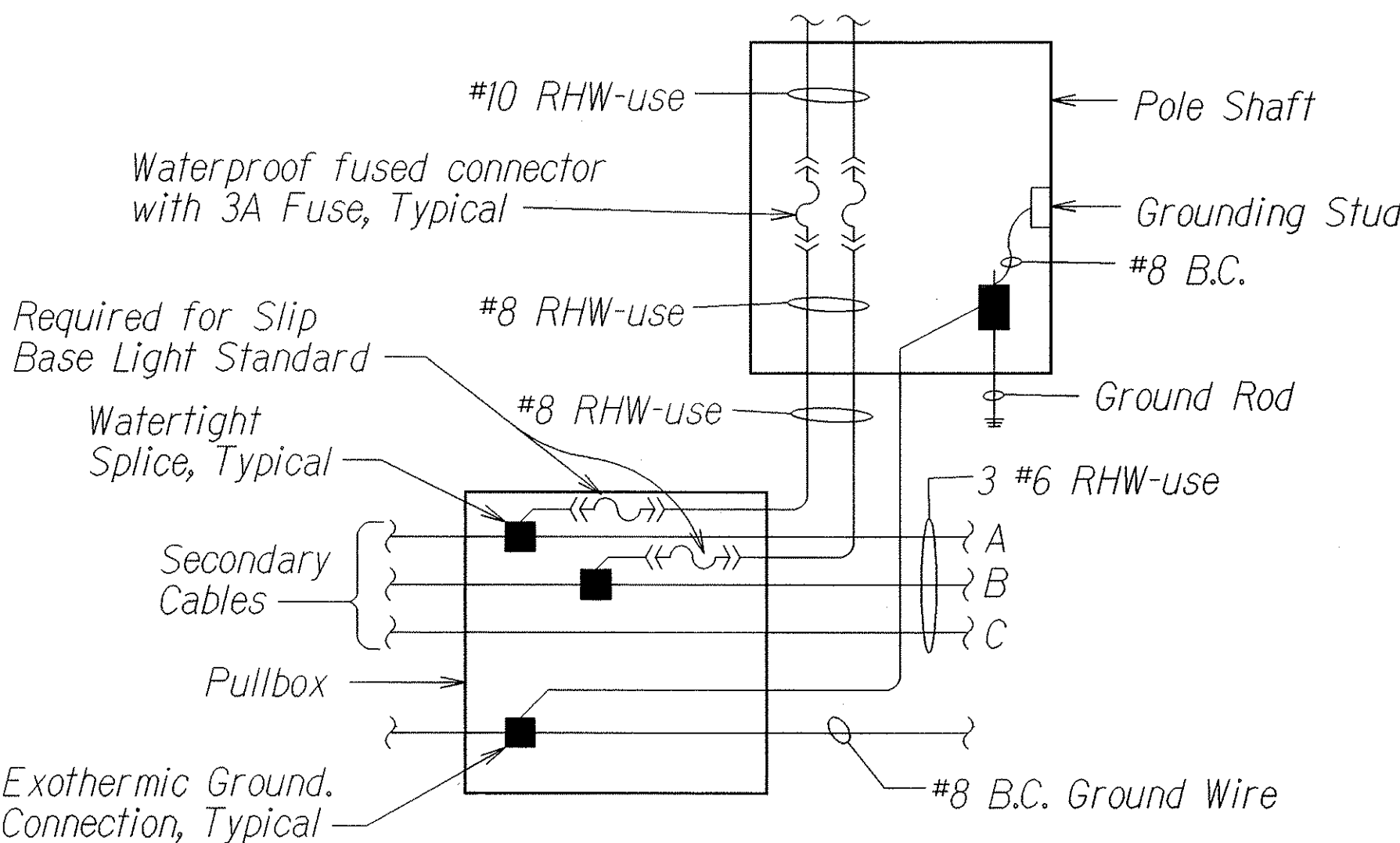
- All conduit shall be "PVC" Sched. 80 For Direct buried or concrete encasement, U.O.N.
- Backfill over concrete duct sections shall be Type "A"
- Backfill over direct buried conduits shall be Type "B"
- If the normal material in the bottom of a trench containing a direct burial conduit is not Type "B" an additional 3" shall be excavated and Type "B" backfill provided.
- Concrete for ducts to be 2,500 P.S.I. in 28 days.



**TYPICAL STREET LIGHT DUCT SECTION**  
**(DIRECT BURIED)**  
Not to Scale



**TYPICAL DUCT SECTION**  
**(CONCRETE ENCASED)**



**WIRING CONNECTION DIAGRAM**  
Not to Scale

6/19/06 Added Warning Tape to the Duct Sections. Replace the word "Vault" with "Meter".

DATE REVISION

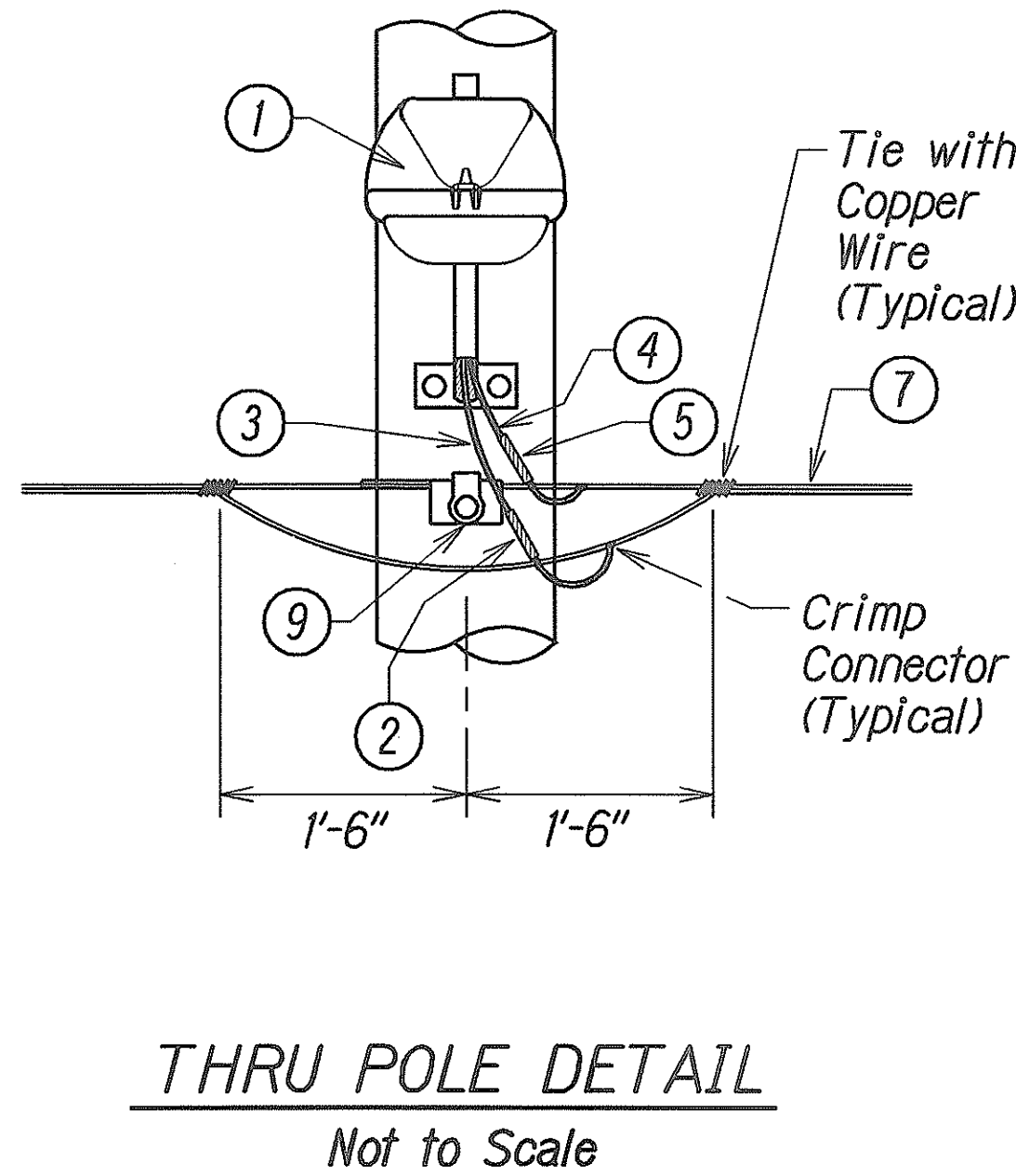
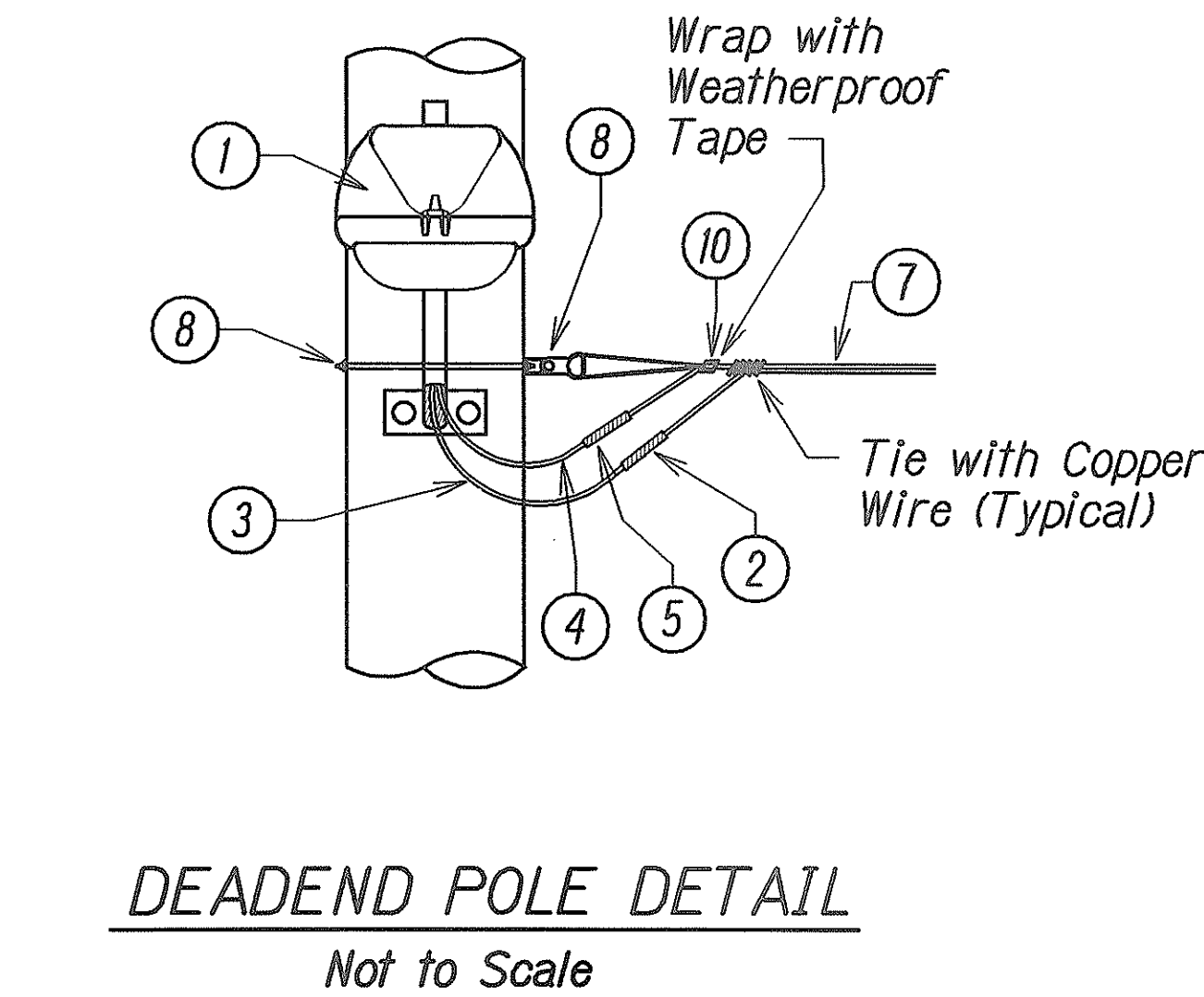
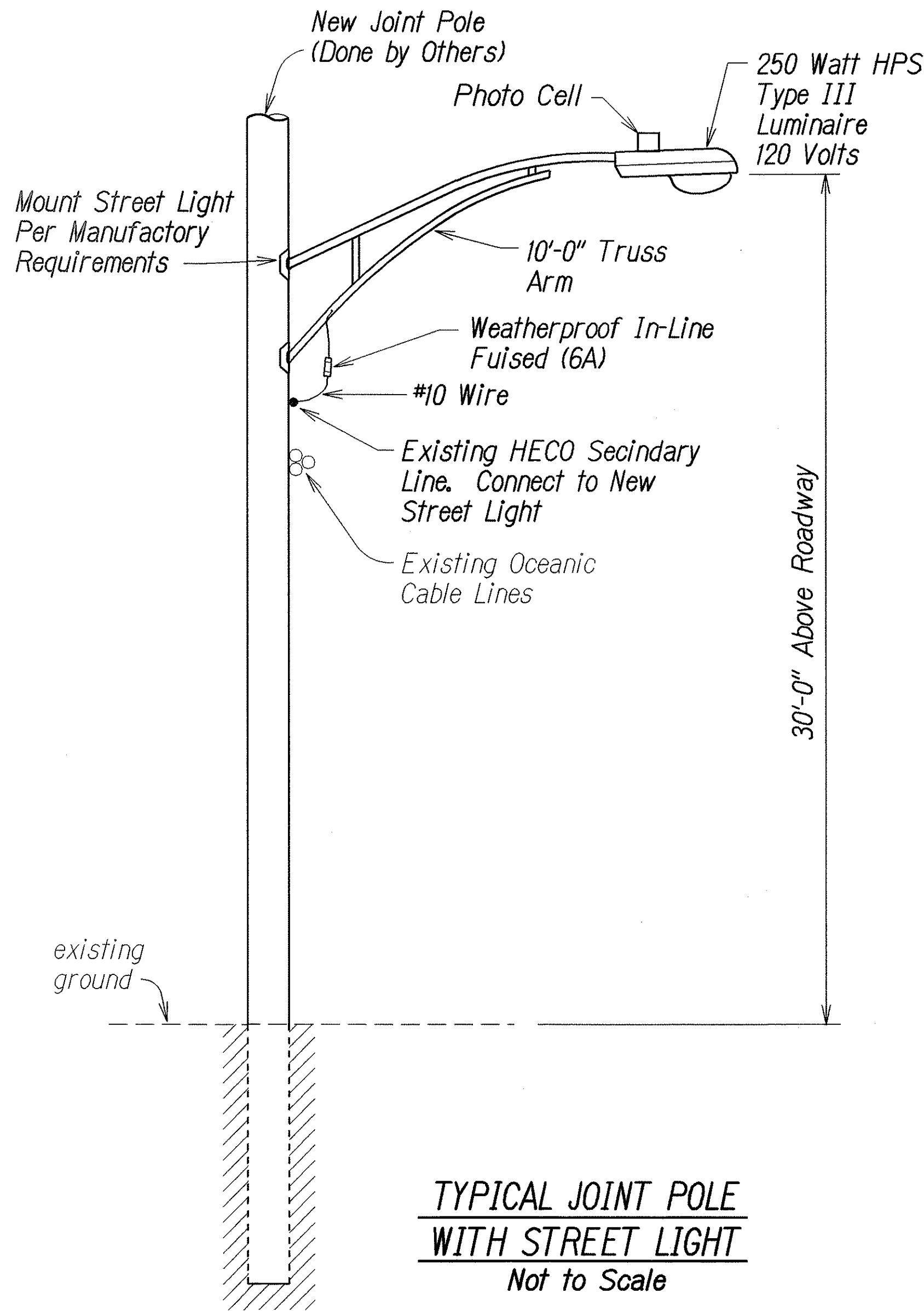
STATE OF HAWAII  
DEPARTMENT OF TRANSPORTATION  
HIGHWAYS DIVISION  
**HIGHWAY LIGHTING DETAILS**  
KAMEHAMEHA HIGHWAY  
Intersection Improvements  
At Kahekili Highway  
Project No. 83F-01-99

Scale: As Noted Date: April, 2006

SHEET No. 2 OF 2 SHEETS

ADD.24

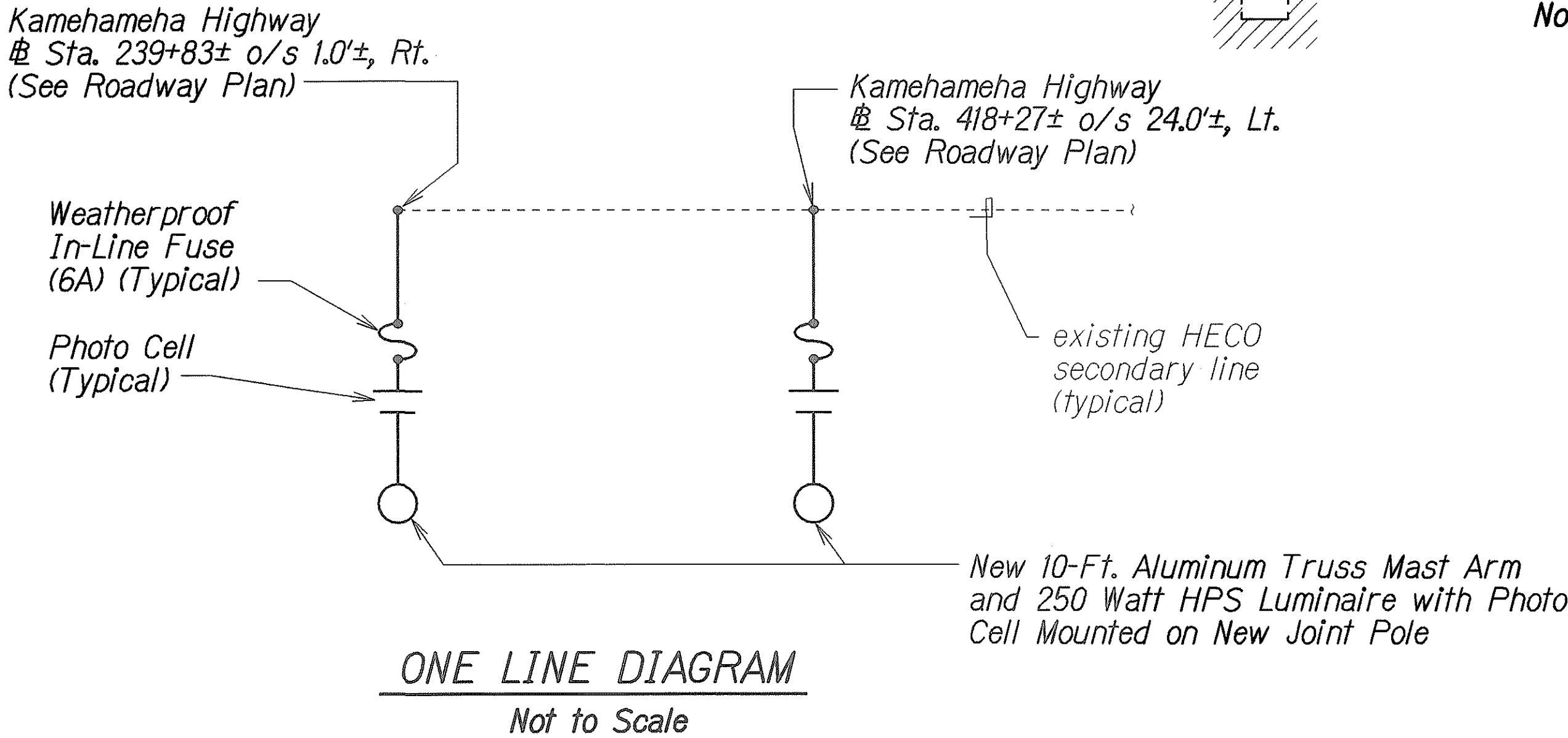
FED. ROAD DIST. NO.	STATE	PROJ. NO.	FISCAL YEAR	SHEET NO.	TOTAL SHEETS
HAWAII	HAW.	83F-01-99	2006	ADD.24S-1	28



- ITEM NO. DESCRIPTION**
- Luminaire 250 W HPS and Bracket as Shown
  - In Line Fuse Holder with 6A Fuse
  - Wire #10 AWG Stranded Copper, Type RHW Black
  - Wire #10 AWG Stranded Copper, Type RHW Red
  - In Line Unfused, Insulated Separable Connector
  - Thimble Clevis with Eyelet
  - Wires, 2-#2 XHHW Copper with Copper Clad Messenger
  - Anchor Guy Hook with 3/4"Ø Thru Bolt & 2 1/4" Sq. Washer
  - Messenger Hanger, 5/8"Ø Thru & 2 1/4" Sq. Washer
  - Performed Deadended

**Note:**  
All Hardware shall be Hot Dipped Galv. Steel

**NOTE:**  
The Contractor shall arrange the Power Source Connections with HECO Secondary Line. The Cost of this Work shall be Considered Incidental to Contract Item No. 622.T200 - Install New Highway Lighting Luminaire System and All Appurtenances.



ORIGINAL PLAN	DATE
DRAWN BY	
DESIGNED BY	
CHECKED BY	
NOTED BY	
DATE	

6/16/06	Added New Sheet.
DATE	REVISION
STATE OF HAWAII DEPARTMENT OF TRANSPORTATION HIGHWAYS DIVISION	
<b>ELECTRICAL DETAILS</b>	
FARRINGTON HIGHWAY Intersection Improvements at Leoku Street Project No. 7101A-02-99	
Scale: None	Date: April, 2000
SHEET No. 2A OF 2 SHEETS	