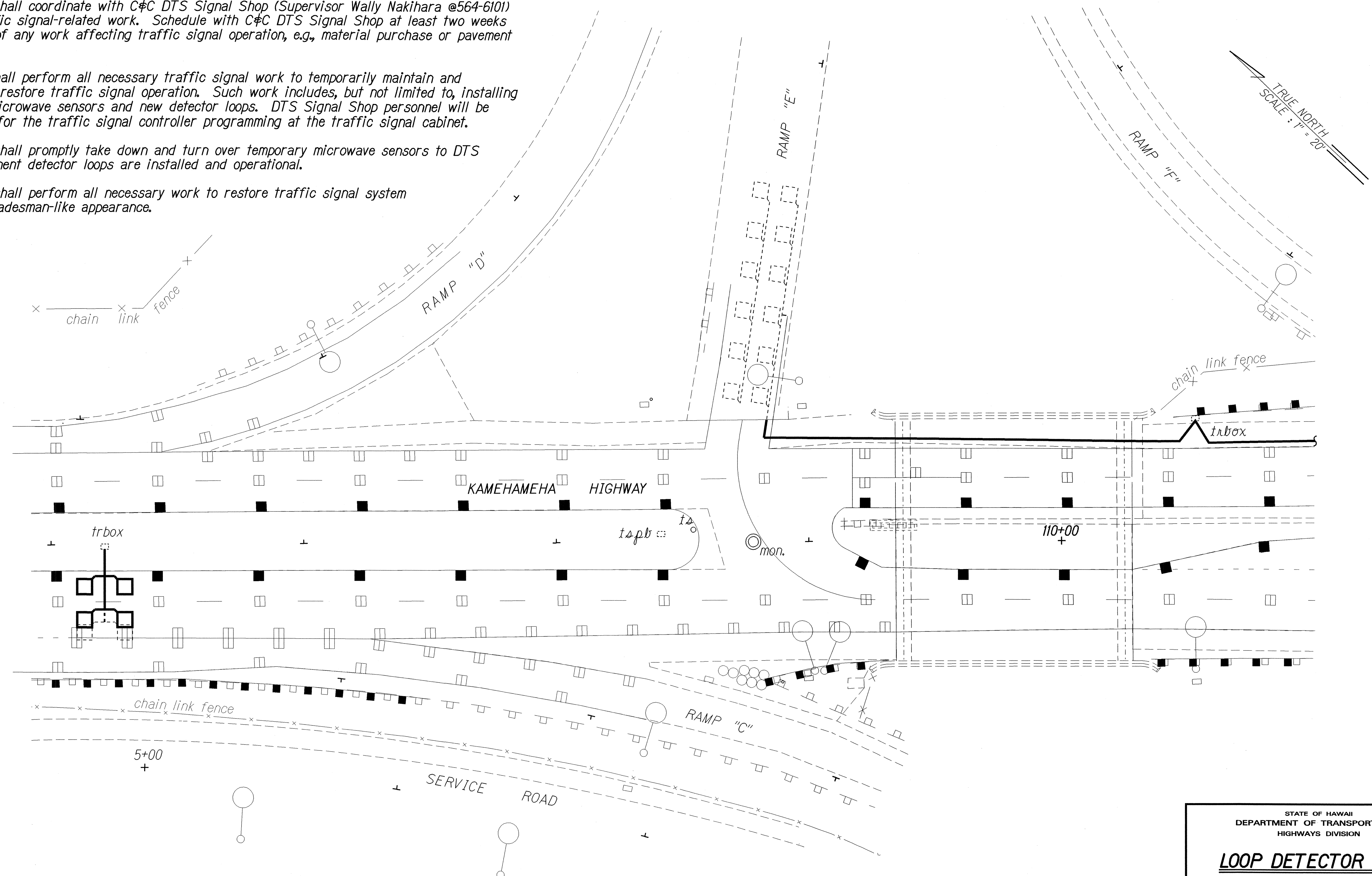


**NOTES:**

1. Loop detector location and quantity shown on this plan are only schematic and approximate. Final location and quantity are subject to field confirmation or change by the Engineer.
2. Contractor shall coordinate with C&C DTS Signal Shop (Supervisor Wally Nakihara @564-6101) for all traffic signal-related work. Schedule with C&C DTS Signal Shop at least two weeks in advance of any work affecting traffic signal operation, e.g., material purchase or pavement cold planing.
3. Contactor shall perform all necessary traffic signal work to temporarily maintain and permanently restore traffic signal operation. Such work includes, but not limited to, installing temporary microwave sensors and new detector loops. DTS Signal Shop personnel will be responsible for the traffic signal controller programming at the traffic signal cabinet.
4. Contractor shall promptly take down and turn over temporary microwave sensors to DTS when permanent detector loops are installed and operational.
5. Contractor shall perform all necessary work to restore traffic signal system to a neat tradesman-like appearance.

FED. ROAD DIST. NO.	STATE	PROJ. NO.	FISCAL YEAR	SHEET NO.	TOTAL SHEETS
HAWAII	HAW.	83G-01-03M	2005	45	47



SURVEY PLOTTED BY	DATE
DRAWN BY	
DESIGNED BY	
CHECKED BY	
NOTED BY	
REVISIONS	

STATE OF HAWAII  
DEPARTMENT OF TRANSPORTATION  
HIGHWAYS DIVISION

**LOOP DETECTOR PLAN**

**KAMEHAMEHA HIGHWAY RESURFACING**  
**Kahiko Street to Pali Highway**  
**Project No. 83G-01-03M**

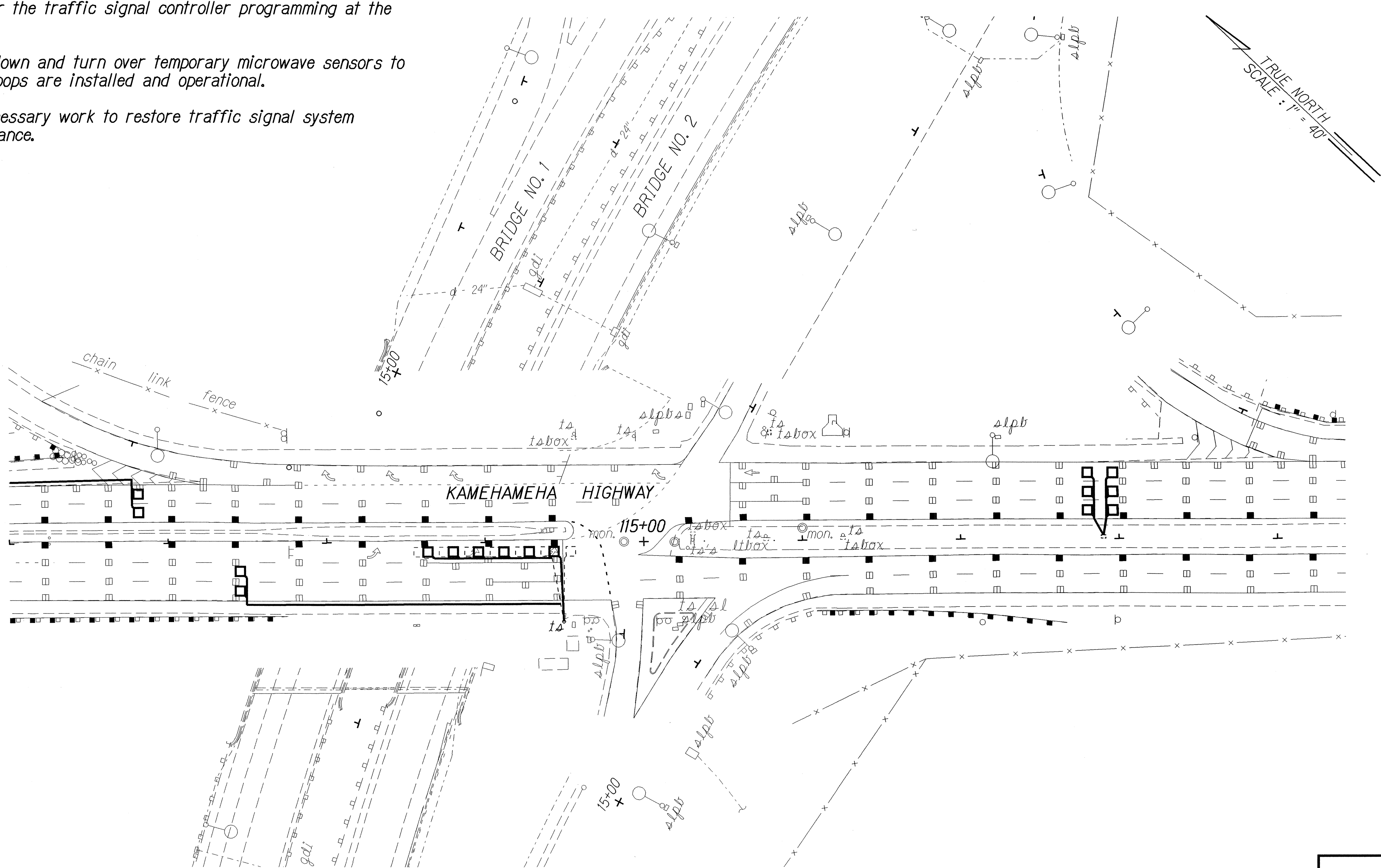
Scale: 1" = 20' Date: Oct. 2004

SHEET No. TS3 OF 5 SHEETS

NOTES:

1. Loop detector location and quantity shown on this plan are only schematic and approximate. Final location and quantity are subject to field confirmation or change by the Engineer.
2. Contractor shall coordinate with C&C DTS Signal Shop (Supervisor Wally Nakihara @564-6101) for all traffic signal-related work. Schedule with C&C DTS Signal Shop at least two weeks in advance of any work affecting traffic signal operation, e.g., material purchase or pavement cold planing.
3. Contactor shall perform all necessary traffic signal work to temporarily maintain and permanently restore traffic signal operation. Such work includes, but not limited to, installing temporary microwave sensors and new detector loops. DTS Signal Shop personnel will be responsible for the traffic signal controller programming at the traffic signal cabinet.
4. Contractor shall promptly take down and turn over temporary microwave sensors to DTS when permanent detector loops are installed and operational.
5. Contractor shall perform all necessary work to restore traffic signal system to a neat tradesman-like appearance.

FED. ROAD DIST. NO.	STATE	PROJ. NO.	FISCAL YEAR	SHEET NO.	TOTAL SHEETS
HAWAII	HAW.	83G-01-03M	2005	46	47



ORIGINAL PLAN	DESIGNED BY	DATE
NOTED BOOK	TRACED BY	10/12/04
QUANTITIES BY	DESIGNED BY	
CHECKED BY	TRACED BY	

STATE OF HAWAII  
DEPARTMENT OF TRANSPORTATION  
HIGHWAYS DIVISION

**LOOP DETECTOR PLAN**

KAMEHAMEHA HIGHWAY RESURFACING  
Kahiko Street to Pali Highway  
Project No. 83G-01-03M

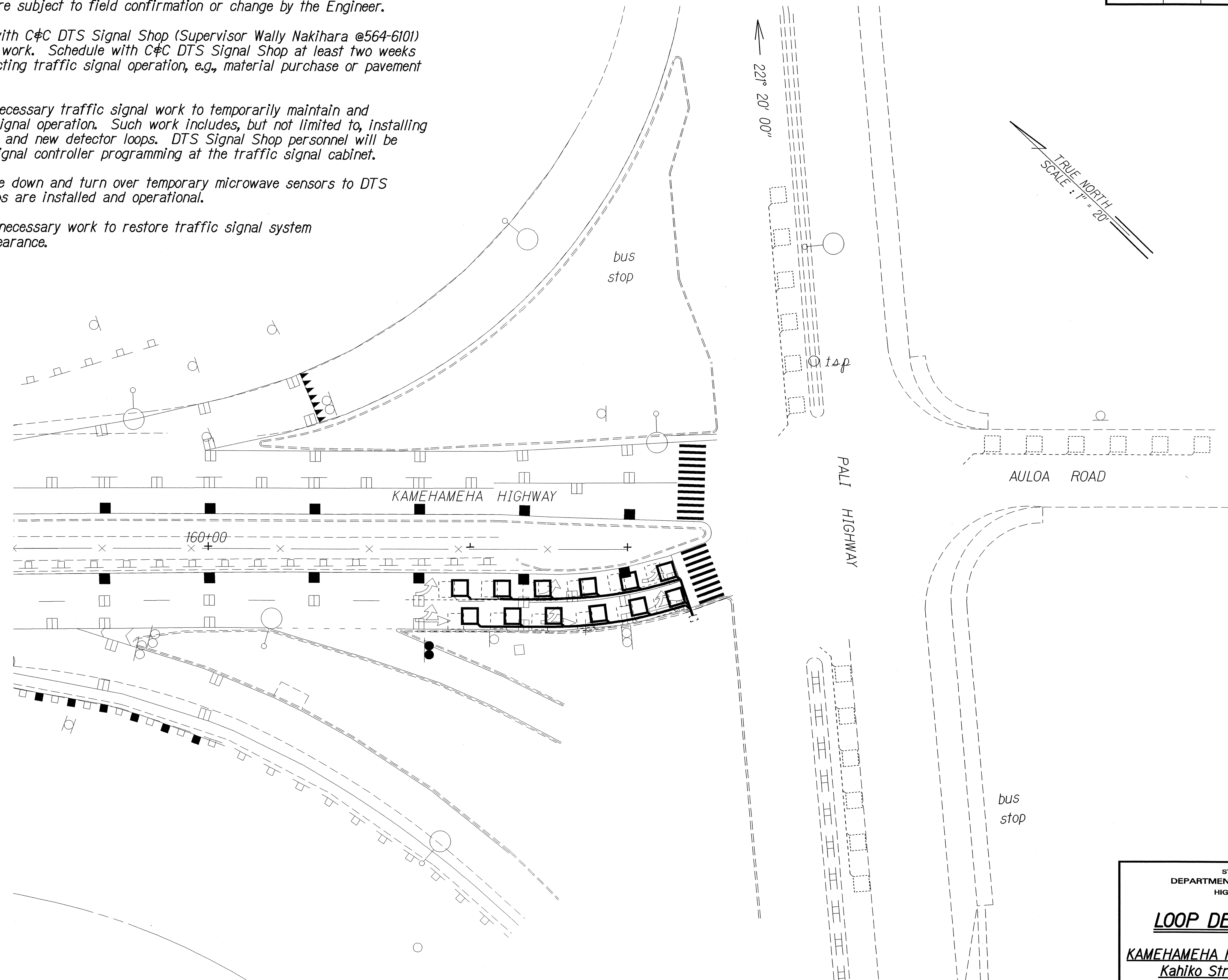
Scale: 1" = 40'      Date: Oct. 2004

SHEET No. TS4 OF 5 SHEETS

**NOTES:**

1. Loop detector location and quantity shown on this plan are only schematic and approximate. Final location and quantity are subject to field confirmation or change by the Engineer.
2. Contractor shall coordinate with C&C DTS Signal Shop (Supervisor Wally Nakiara @564-6101) for all traffic signal-related work. Schedule with C&C DTS Signal Shop at least two weeks in advance of any work affecting traffic signal operation, e.g., material purchase or pavement cold planing.
3. Contractor shall perform all necessary traffic signal work to temporarily maintain and permanently restore traffic signal operation. Such work includes, but not limited to, installing temporary microwave sensors and new detector loops. DTS Signal Shop personnel will be responsible for the traffic signal controller programming at the traffic signal cabinet.
4. Contractor shall promptly take down and turn over temporary microwave sensors to DTS when permanent detector loops are installed and operational.
5. Contractor shall perform all necessary work to restore traffic signal system to a neat tradesman-like appearance.

FED. ROAD DIST. NO.	STATE	PROJ. NO.	FISCAL YEAR	SHEET NO.	TOTAL SHEETS
HAWAII	HAW.	83G-01-03M	2005	47	47



ORIGINAL PLAN	SURVEY PLOTTED BY	DATE
NOTE BOOK	DRAWN BY	10/17/04
DESIGNED BY	LOU KOO	
CHECKED BY	SCOTT HEDGECOCK	

STATE OF HAWAII  
DEPARTMENT OF TRANSPORTATION  
HIGHWAYS DIVISION

**LOOP DETECTOR PLAN**

**KAMEHAMEHA HIGHWAY RESURFACING**  
*Kahiko Street to Pali Highway*  
Project No. 83G-01-03M

Scale: 1" = 20' Date: Oct. 2004

SHEET No. TS5 OF 5 SHEETS