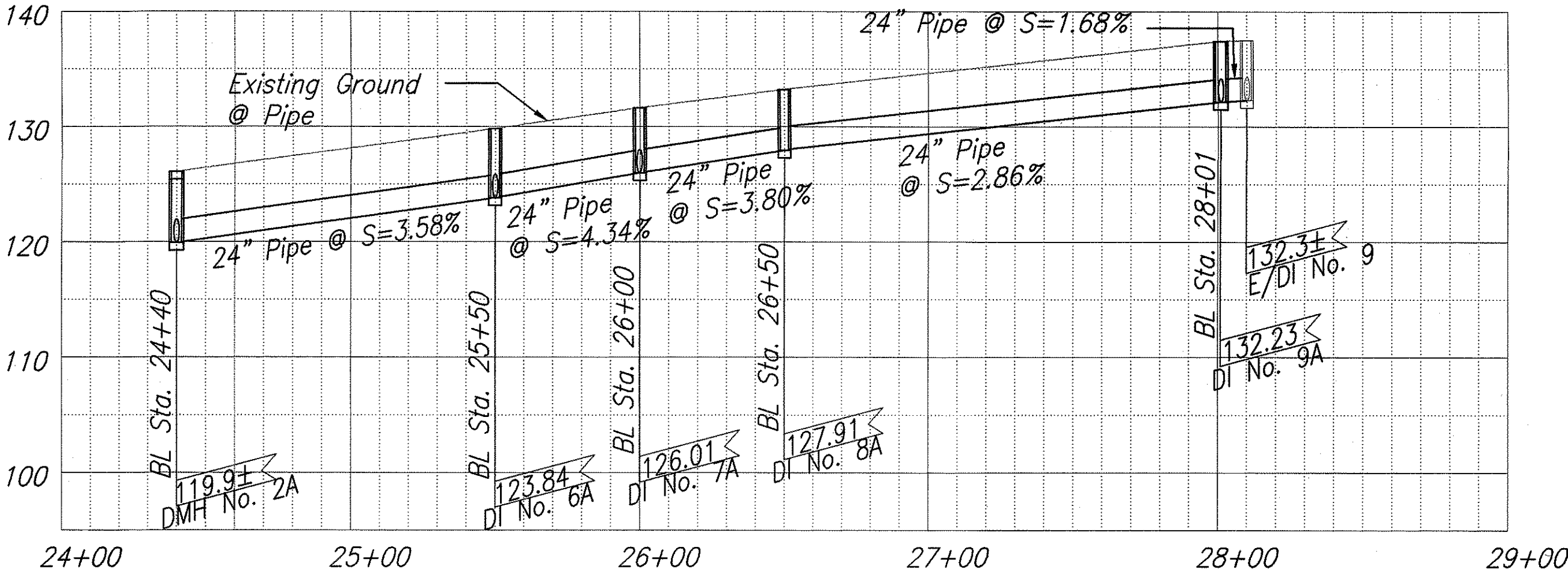
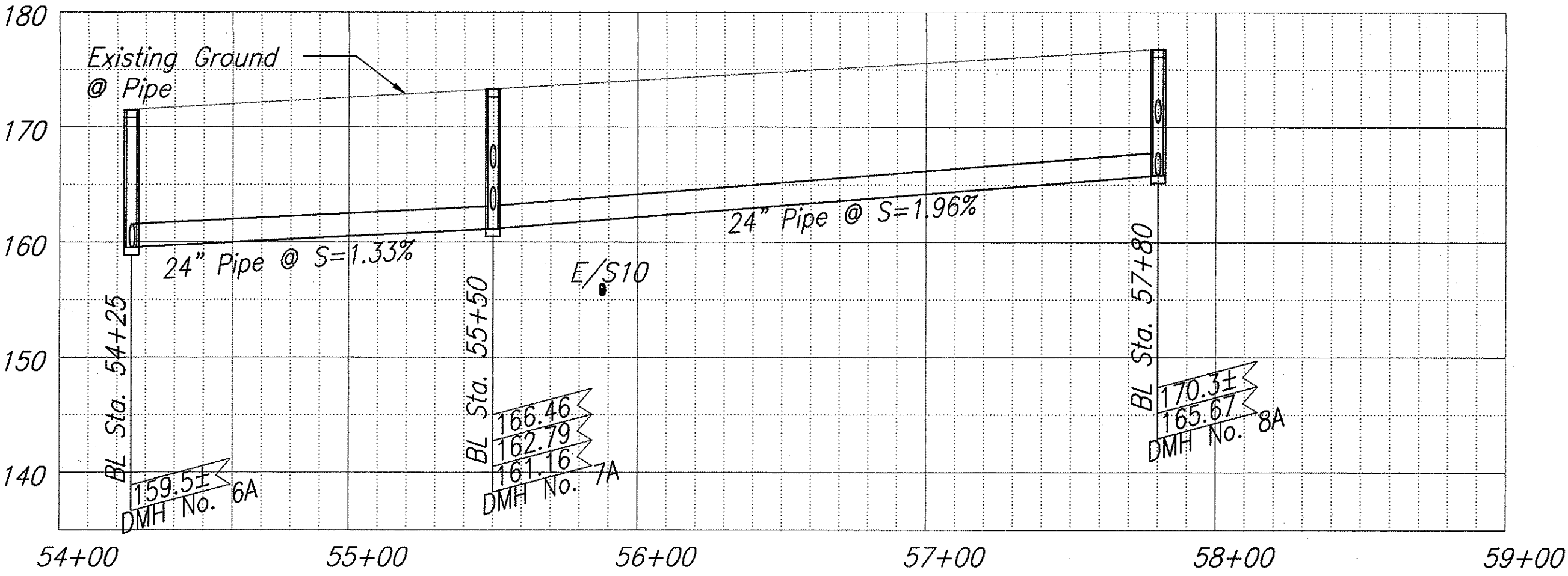


FED. ROAD DIST. NO.	STATE	FED. AID PROJ. NO.	FISCAL YEAR	SHEET NO.	TOTAL SHEETS
HAWAII	HAWAII	NH-083-1(49)	2003	14	78



DRAIN LINE-1
 @ Sta 24+40 to @ Sta 28+00
 Scale: 1"=10' Vert., 1"=40' Horiz.



DRAIN LINE-2
 @ Sta 54+25 to @ Sta 57+80
 Scale: 1"=10' Vert., 1"=40' Horiz.

ORIGINAL PLAN	DATE
NO. 1	12/02
NO. 2	12/02
NO. 3	12/02
NO. 4	12/02
NO. 5	12/02
NO. 6	12/02
NO. 7	12/02
NO. 8	12/02
NO. 9	12/02
NO. 10	12/02

EDWARD H. IIDA
LICENSED PROFESSIONAL ENGINEER
No. 4076-C
HAWAII, U.S.A.

THIS WORK WAS PREPARED BY ME OR UNDER MY SUPERVISION
Edward H. Iida
MITSUNAGA & ASSOCIATES

STATE OF HAWAII
DEPARTMENT OF TRANSPORTATION
HIGHWAYS DIVISION

DRAIN LINE PROFILES

KAHEKILI HIGHWAY LANDSCAPING
Kulukeoe Street to Vicinity of Haiku Road
Federal Aid Project No. NH-083-1(49)
Scale: As Noted Date: Apr. 2002

SHEET No. 1 OF 1 SHEETS