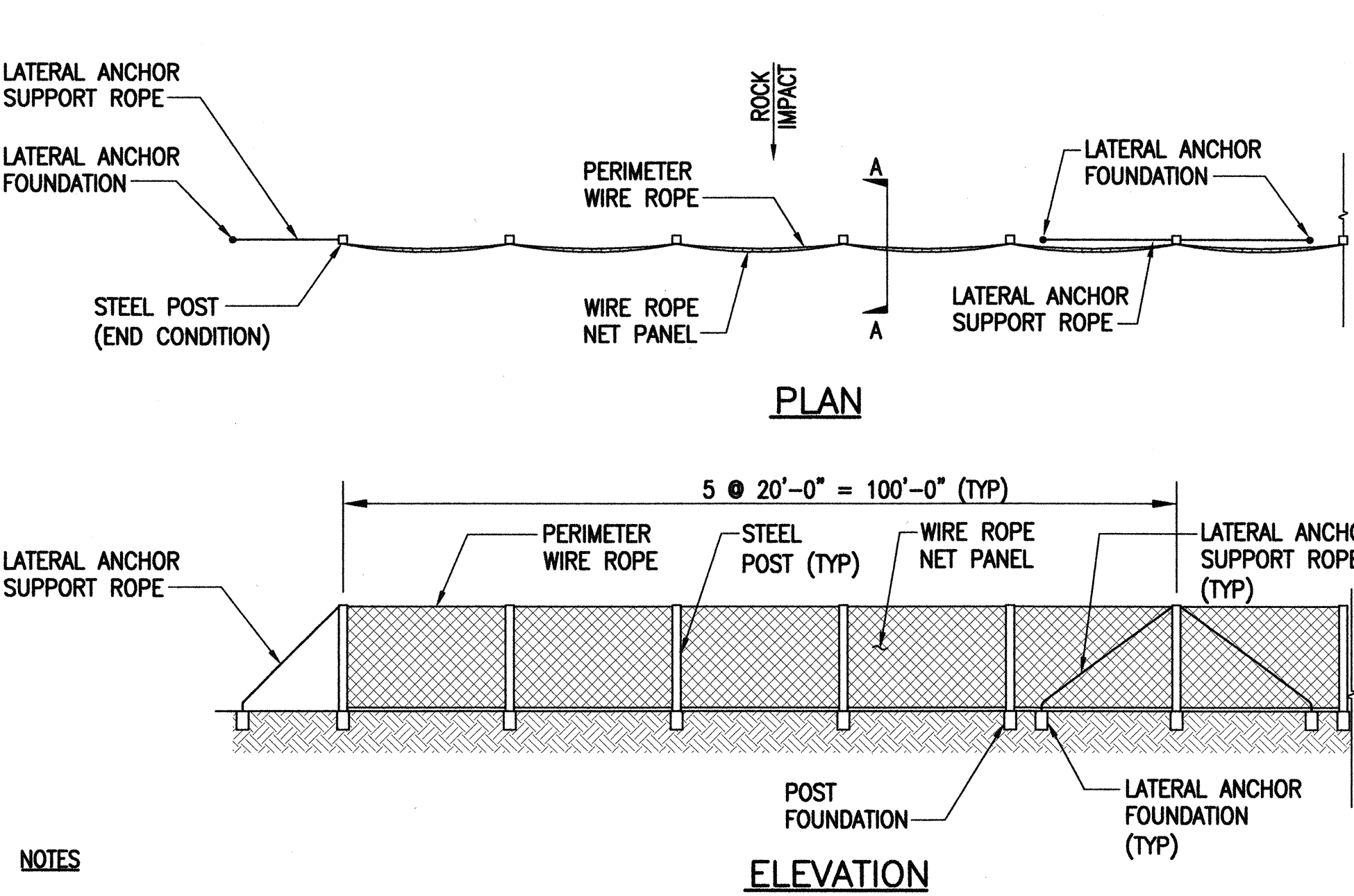


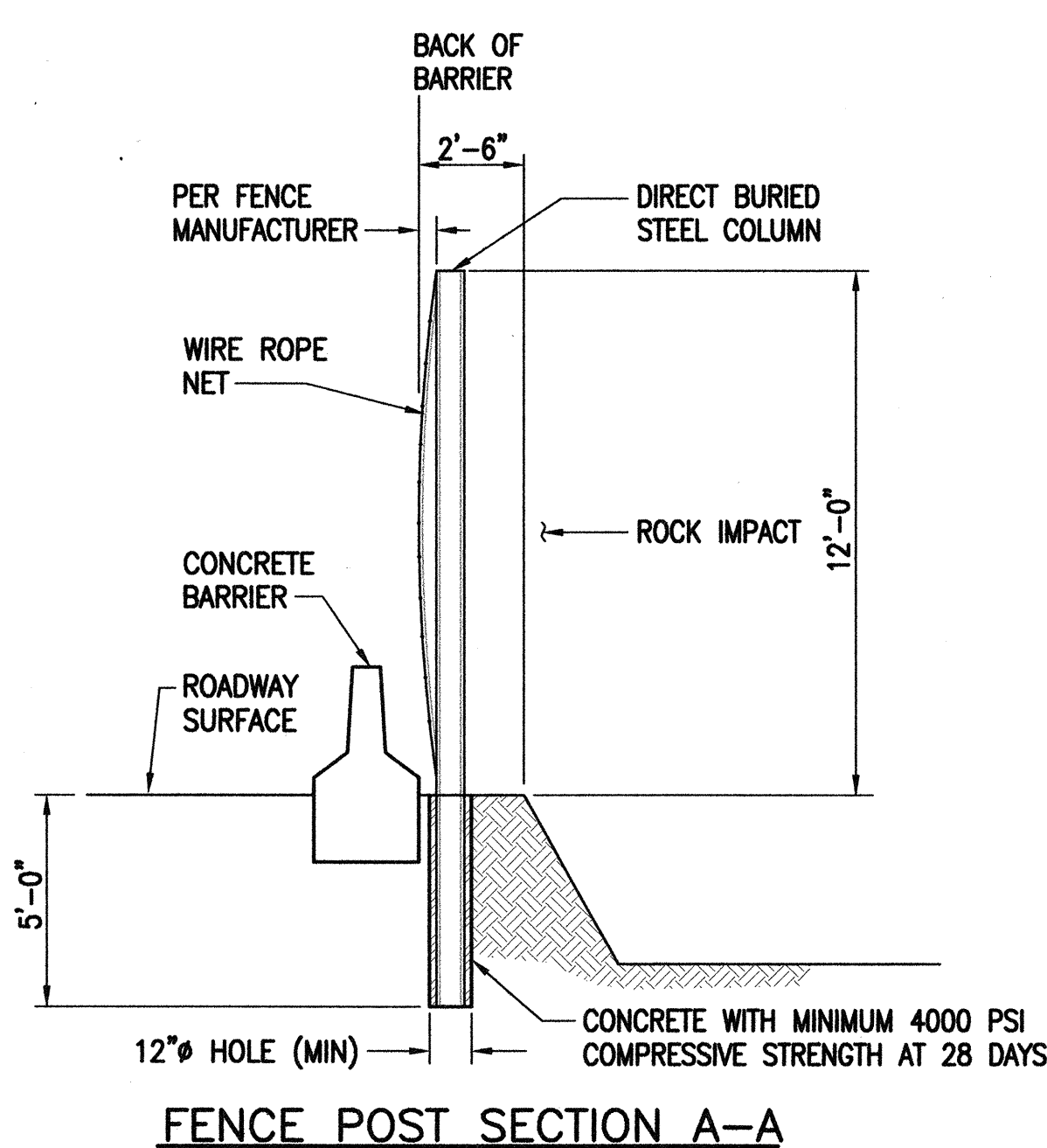
FED. ROAD DIST. NO.	STATE	FED. AID PROJ. NO.	FISCAL YEAR	SHEET NO.	TOTAL SHEETS
OAHU	HAW.	STP-083-1(45)	2000	C.O.14	39



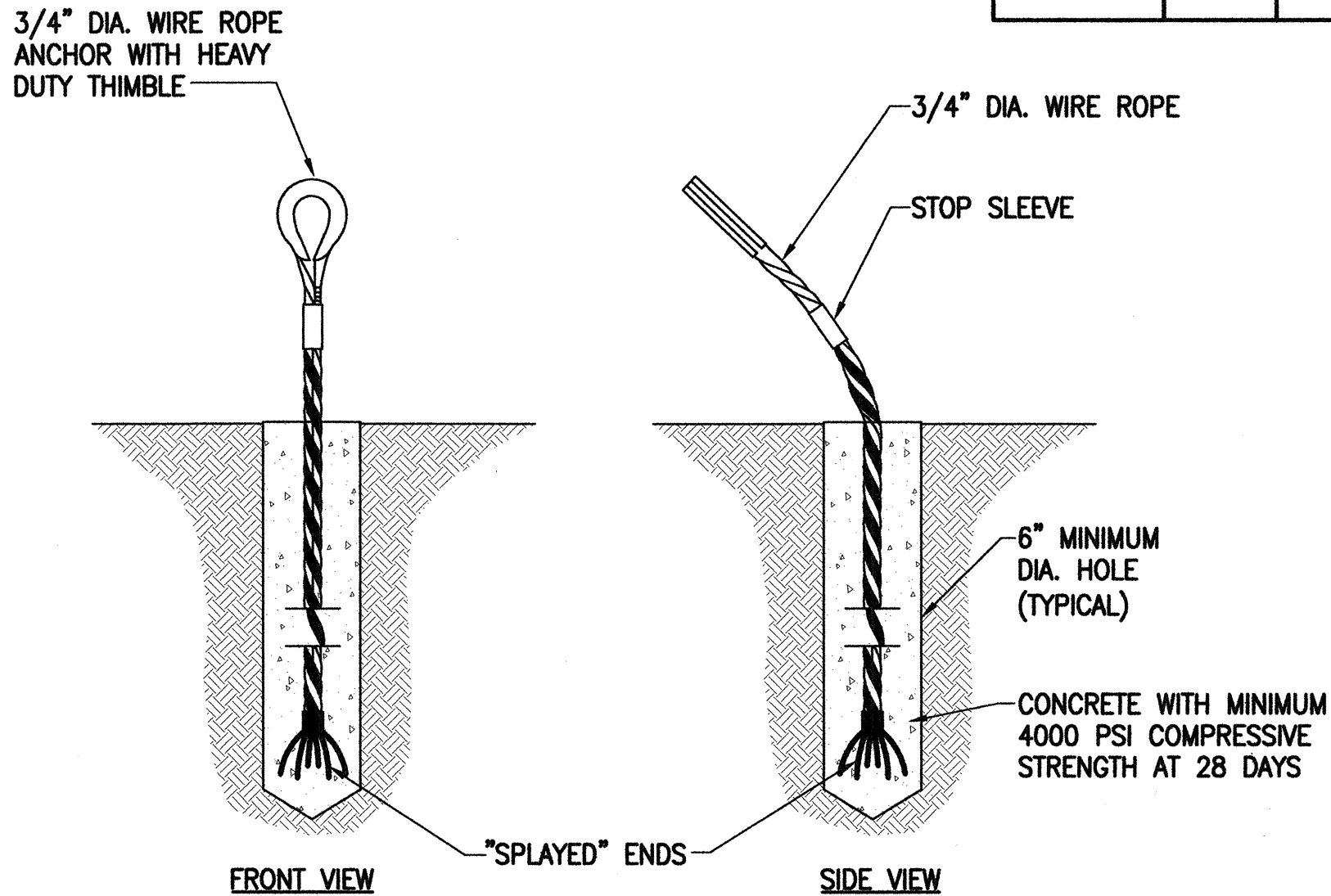
- NOTES**
1. THE ROCK PROTECTION FENCE SYSTEM SHALL BE DESIGNED FOR A MINIMUM OF 74 FOOT-TONS LOADING.
 2. ROCK PROTECTION FENCE SYSTEM SHALL HAVE A FINISH SUITABLE FOR HIGHLY CORROSIVE NEAR OCEAN ENVIRONMENT. PRIOR TO INSTALLATION OF PROTECTION FENCE SYSTEM, CONTRACTOR SHALL SUBMIT DATA ON FINISH TO THE ENGINEER FOR APPROVAL.
 3. REFER TO SPECIFICATIONS FOR DETAILED REQUIREMENTS.

ELEVATION

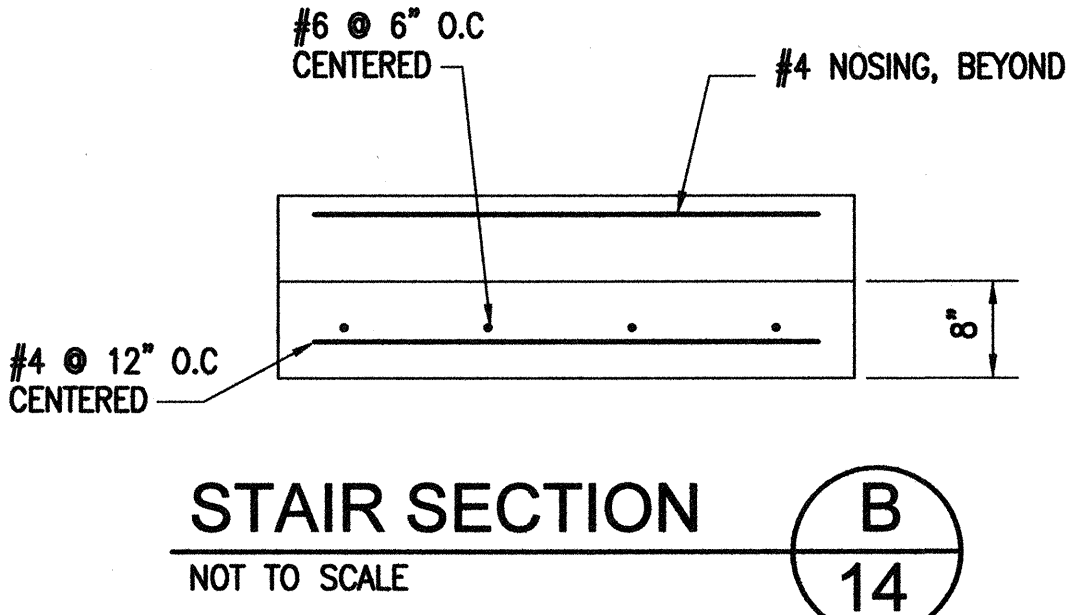
ROCK PROTECTION FENCE SYSTEM 1 14
NOT TO SCALE



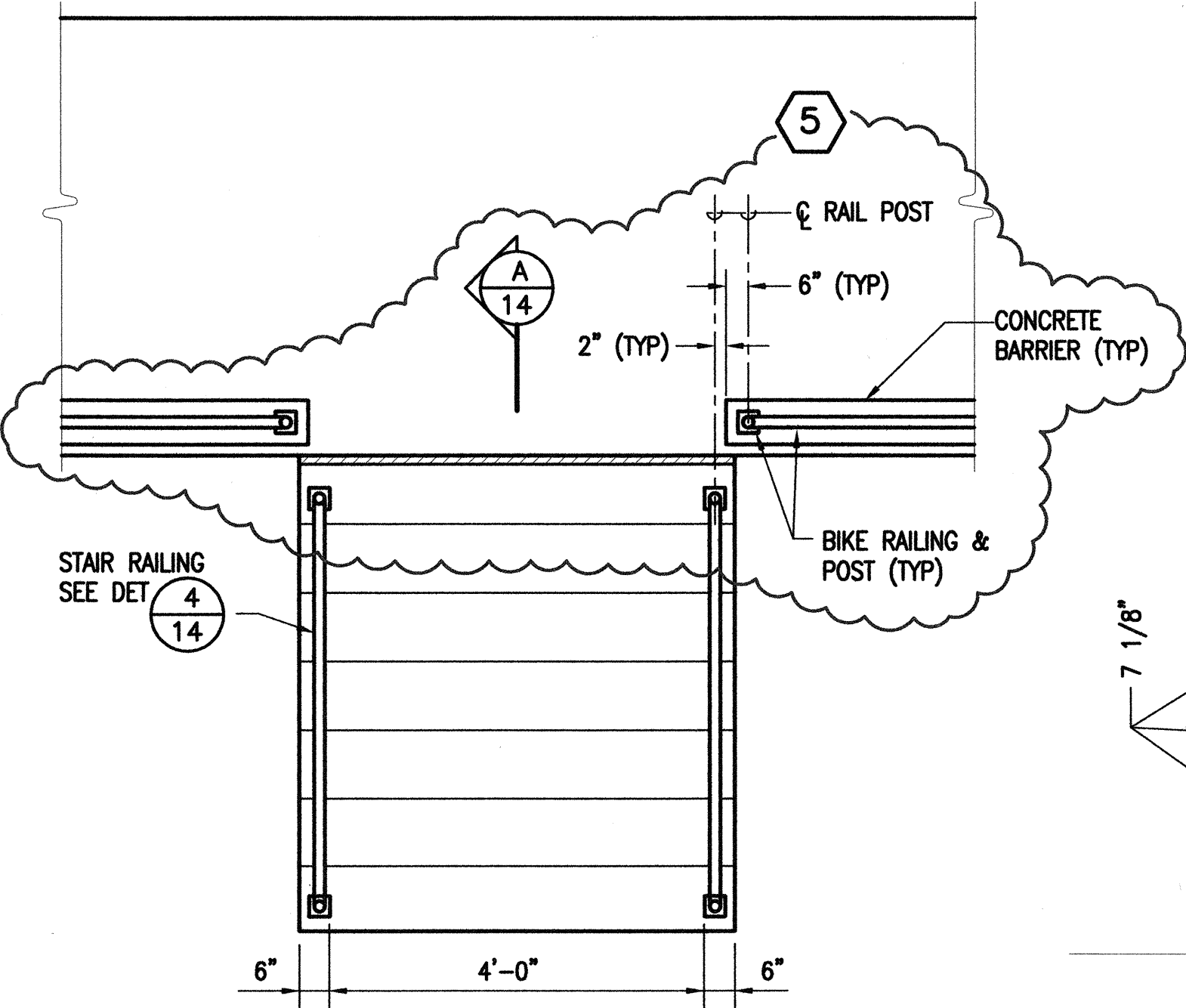
FENCE POST SECTION A-A



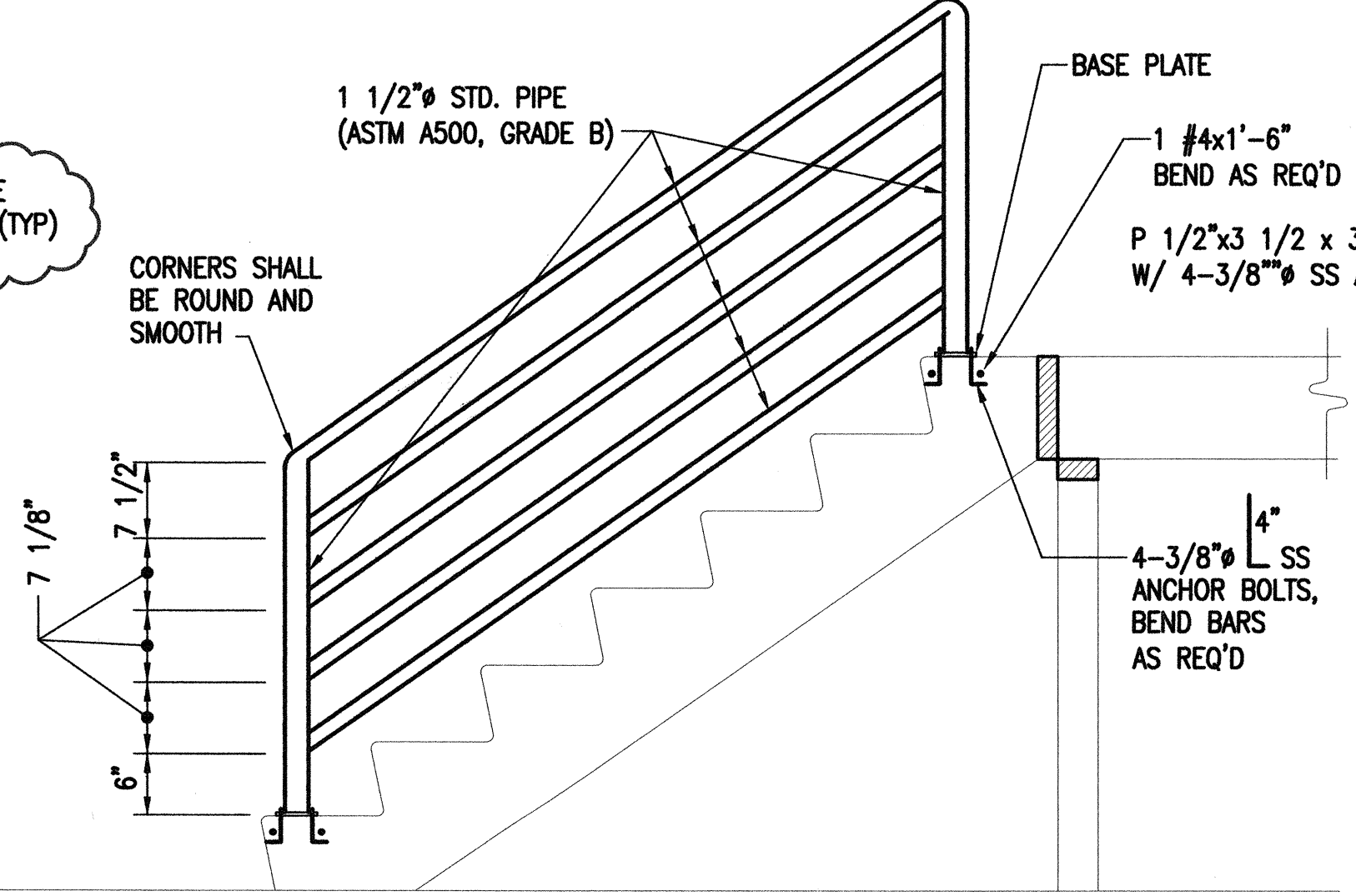
LATERAL ANCHOR SUPPORT ROPE DETAIL 2 14
NOT TO SCALE



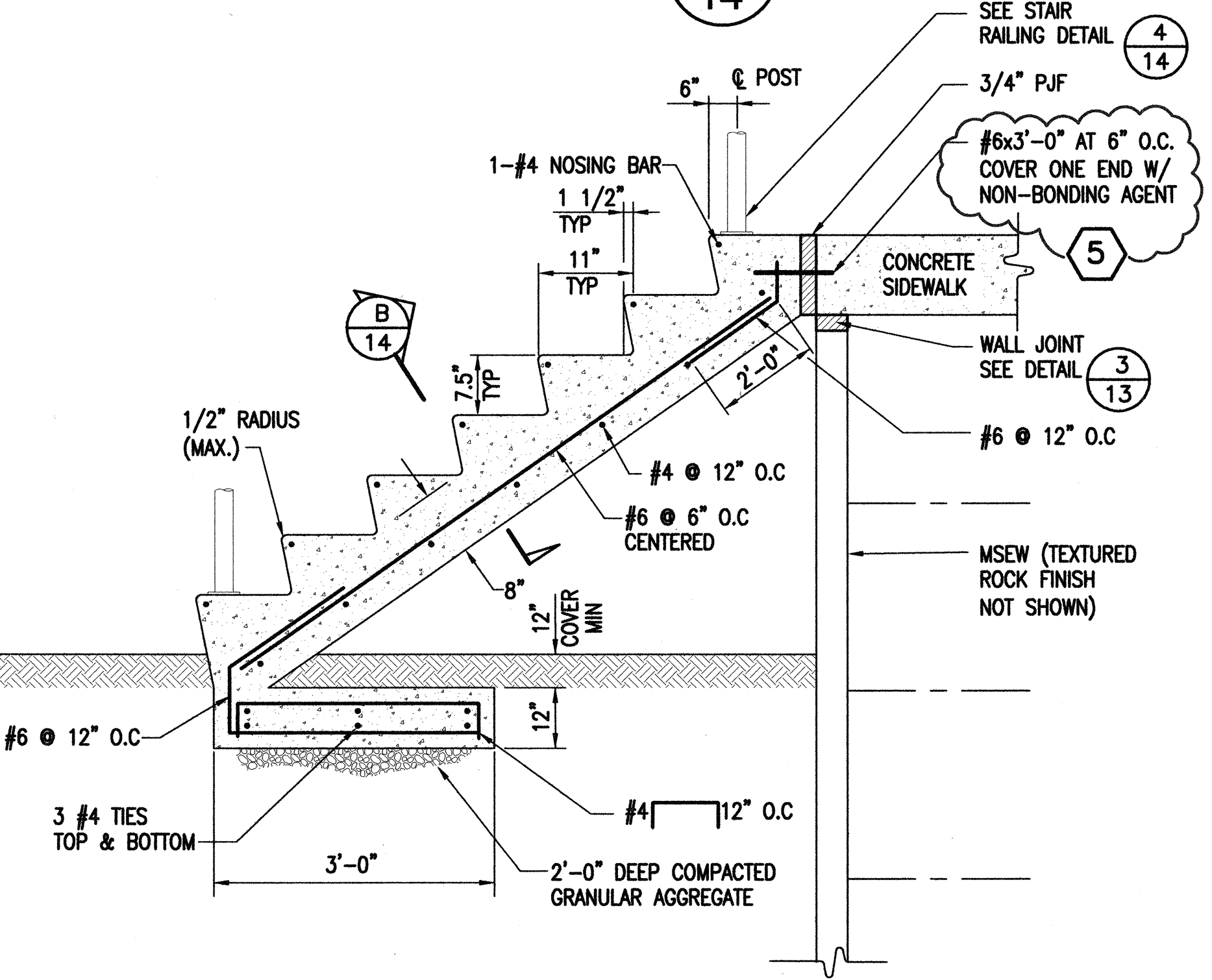
STAIR SECTION B 14
NOT TO SCALE



CONCRETE STAIR PLAN 3 14
NOT TO SCALE



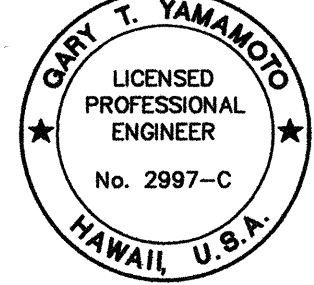
STAIR RAILING DETAIL 4 14
NOT TO SCALE



STAIR SECTION A 14
NOT TO SCALE

- NOTES:**
1. ALL REINFORCING STEEL SHALL HAVE A MINIMUM OF 3" COVER.
 2. STAIR RAILING AND BASE PLATE SHALL HAVE A CORROSION RESISTING FINISH PROPER FOR OCEAN ENVIRONMENT AND SHALL BE SUBJECT TO APPROVAL BY THE ENGINEER. FINISH COLOR SHALL BE AS SELECTED BY THE ENGINEER.

EARTH TECH
700 Bishop Street, Suite 900
Honolulu, HI 96813



THIS WORK WAS PREPARED BY ME OR UNDER MY SUPERVISION.

STATE OF HAWAII
DEPARTMENT OF TRANSPORTATION
HIGHWAYS DIVISION

ROCK PROTECTION FENCE DETAILS
CONCRETE STAIR DETAILS
KAMEHAMEHA HIGHWAY
WAIMEA BAY
EMERGENCY ROCKFALL REMEDIATION
 FEDERAL-AID PROJECT NO. STP-083-1(45)
 Scale: As Shown Date: April 2000
 SHEET No. 14 OF 39 SHEETS

5-9-00	REVISION	5
DATE	REVISION	

AS-BUILT

C.O. 14