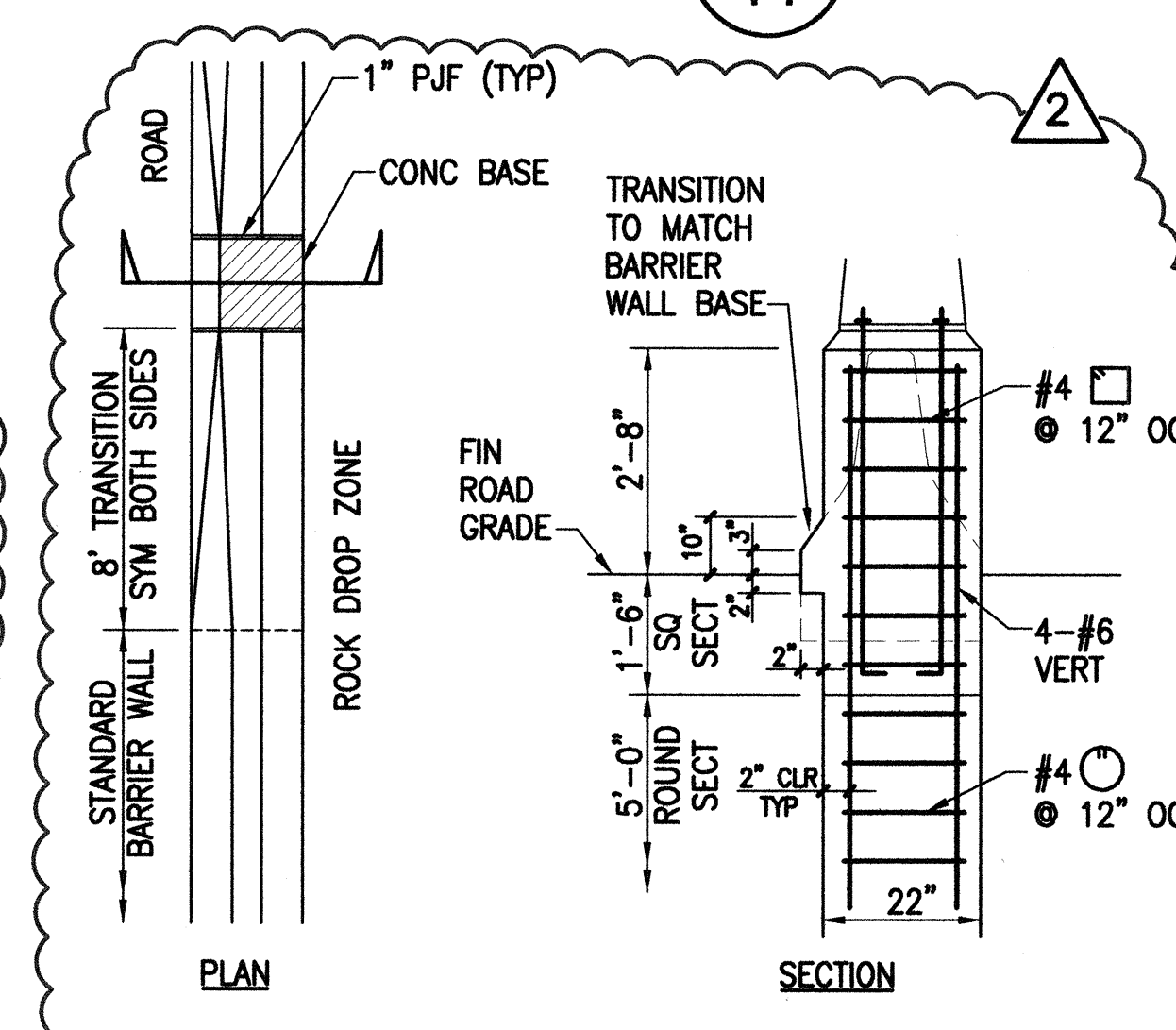
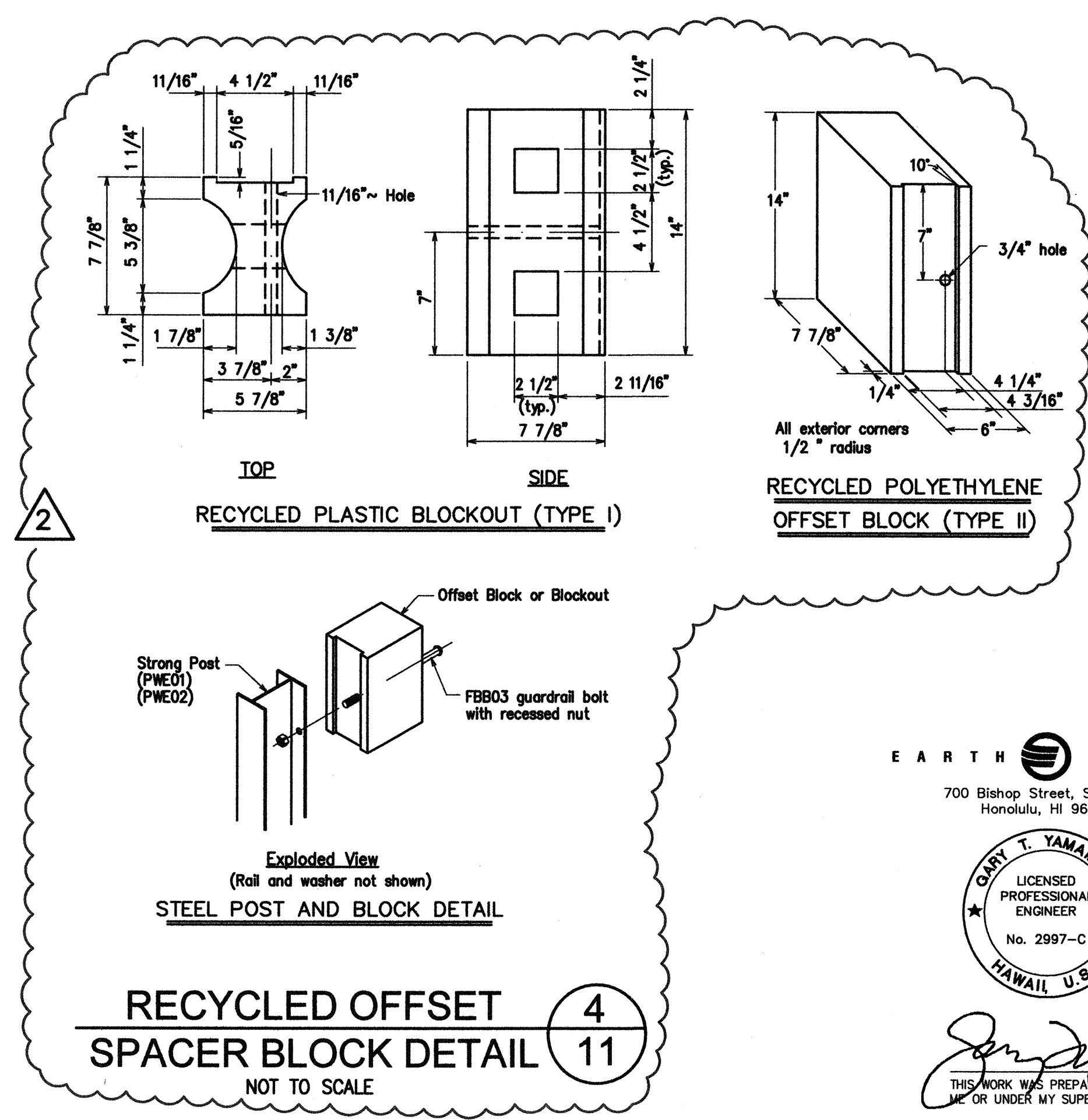
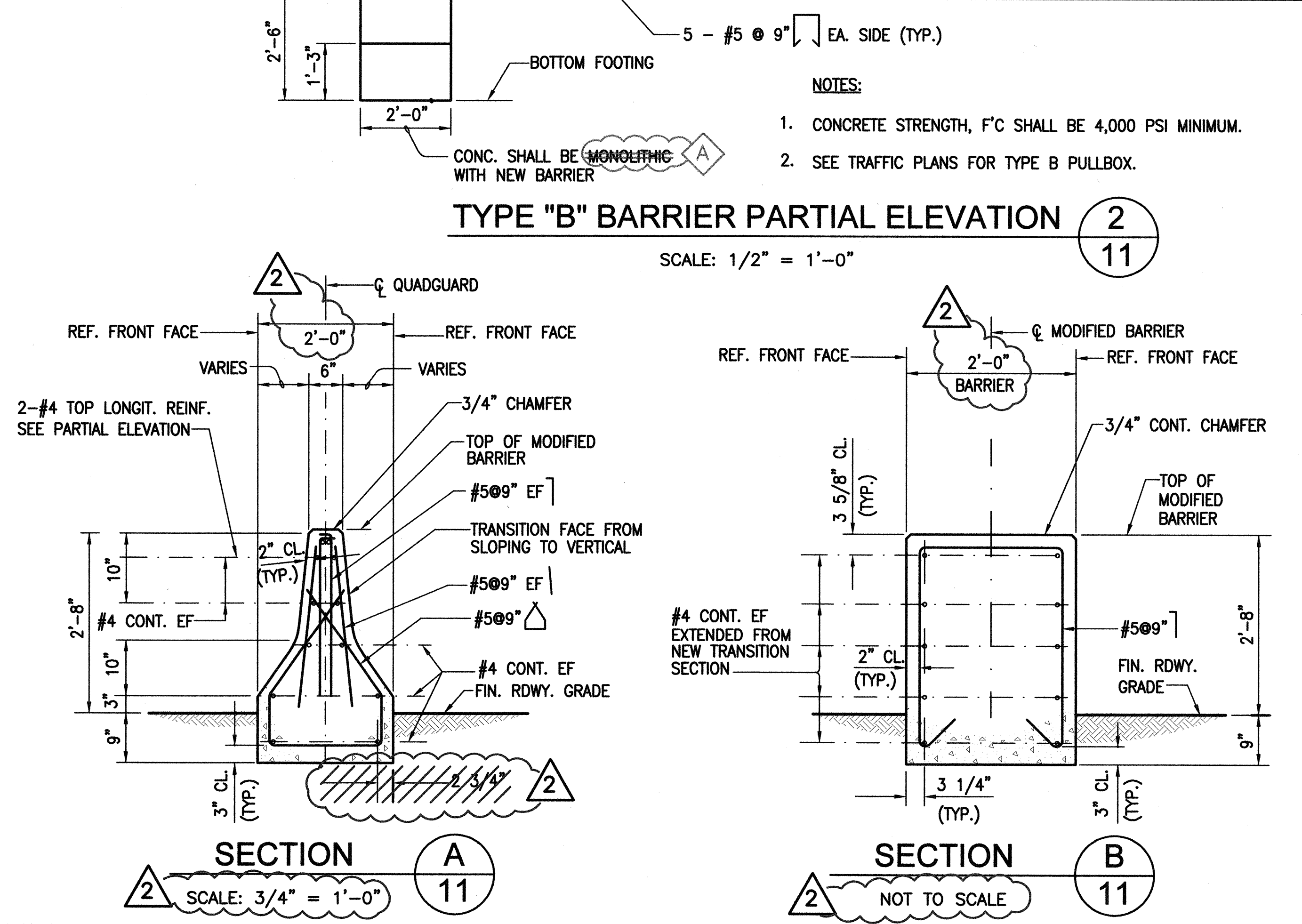
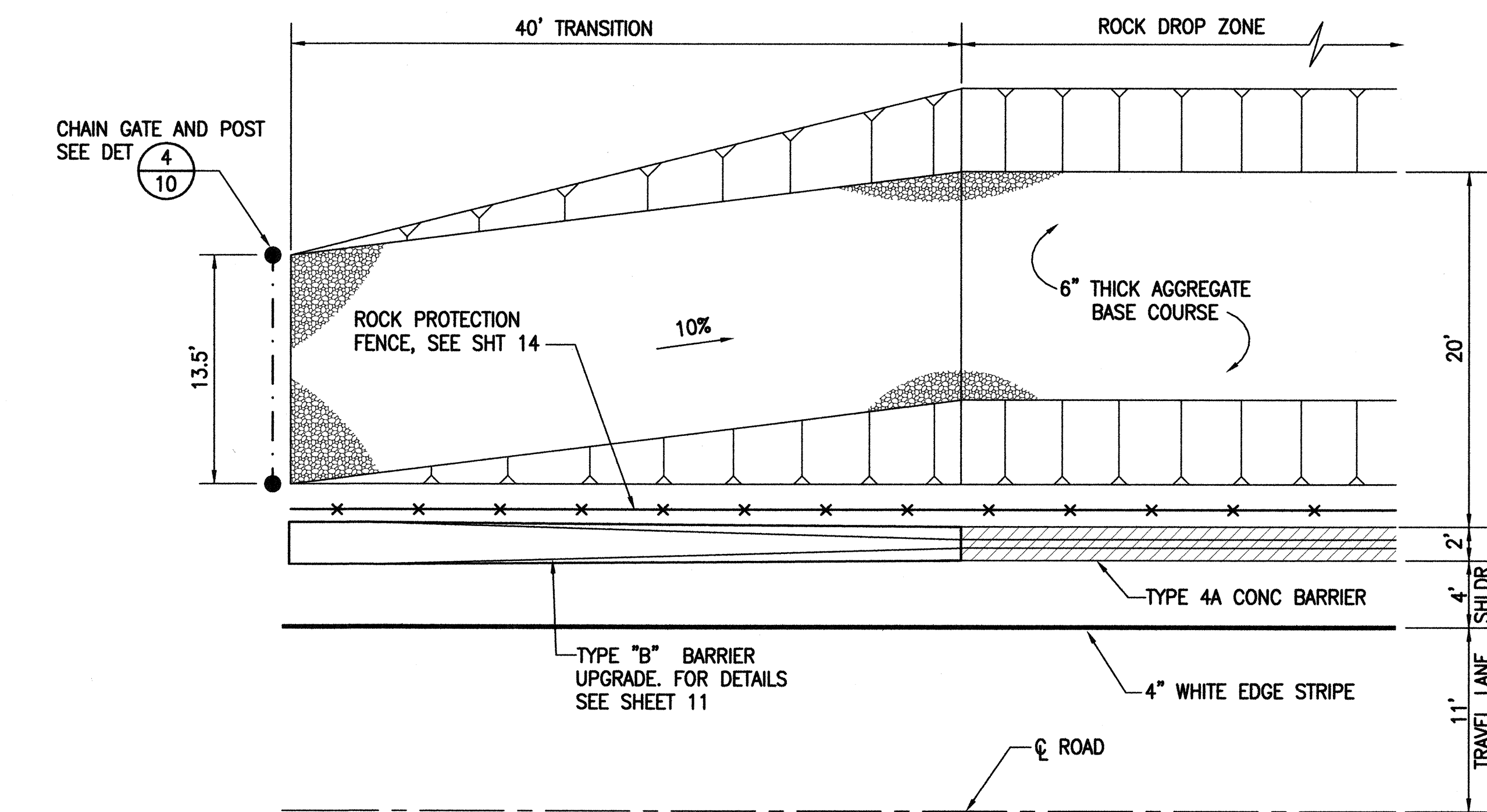
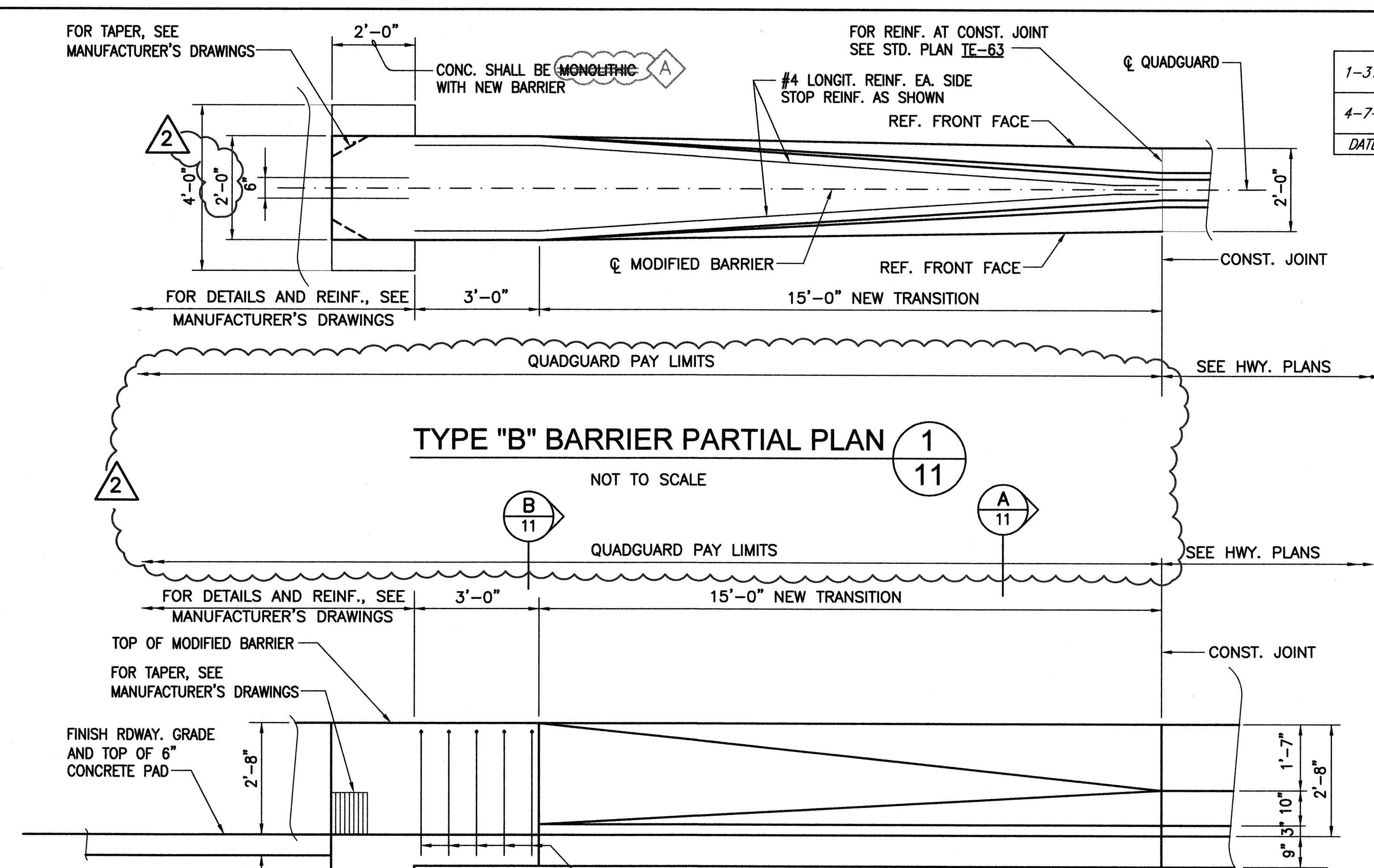


FED. ROAD DIST. NO.	STATE	FED. AID PROJ. NO.	FISCAL YEAR	SHEET NO.	TOTAL SHEETS
OAHU	HAW.	STP-083-1(45)	2000	ADD. 11	39

1-31-02	"AS-BUILT"	A
4-7-00	ADDENDUM	2
DATE	REVISION	



DATE	_____
SURVEY PLOTTED BY	_____
DRAWN BY	_____
DESIGNED BY	_____
NOTE BOOK	_____
QUANTITIES BY	_____
CHECKED BY	_____

EARTH TECH
700 Bishop Street, Suite 900
Honolulu, HI 96813

GARY T. YAMAMOTO
LICENSED PROFESSIONAL ENGINEER
No. 2997-C
HAWAII U.S.A.

THIS WORK WAS PREPARED BY ME OR UNDER MY SUPERVISION.

STATE OF HAWAII
DEPARTMENT OF TRANSPORTATION
HIGHWAYS DIVISION

CIVIL DETAILS

**KAMEHAMEHA HIGHWAY
WAIMEA BAY
EMERGENCY ROCKFALL REMEDIATION**

FEDERAL-AID PROJECT NO. STP-083-1(45)
Scale: As Shown Date: April 2000
SHEET No. 11 OF 39 SHEETS

"AS-BUILT"

ADD. 11