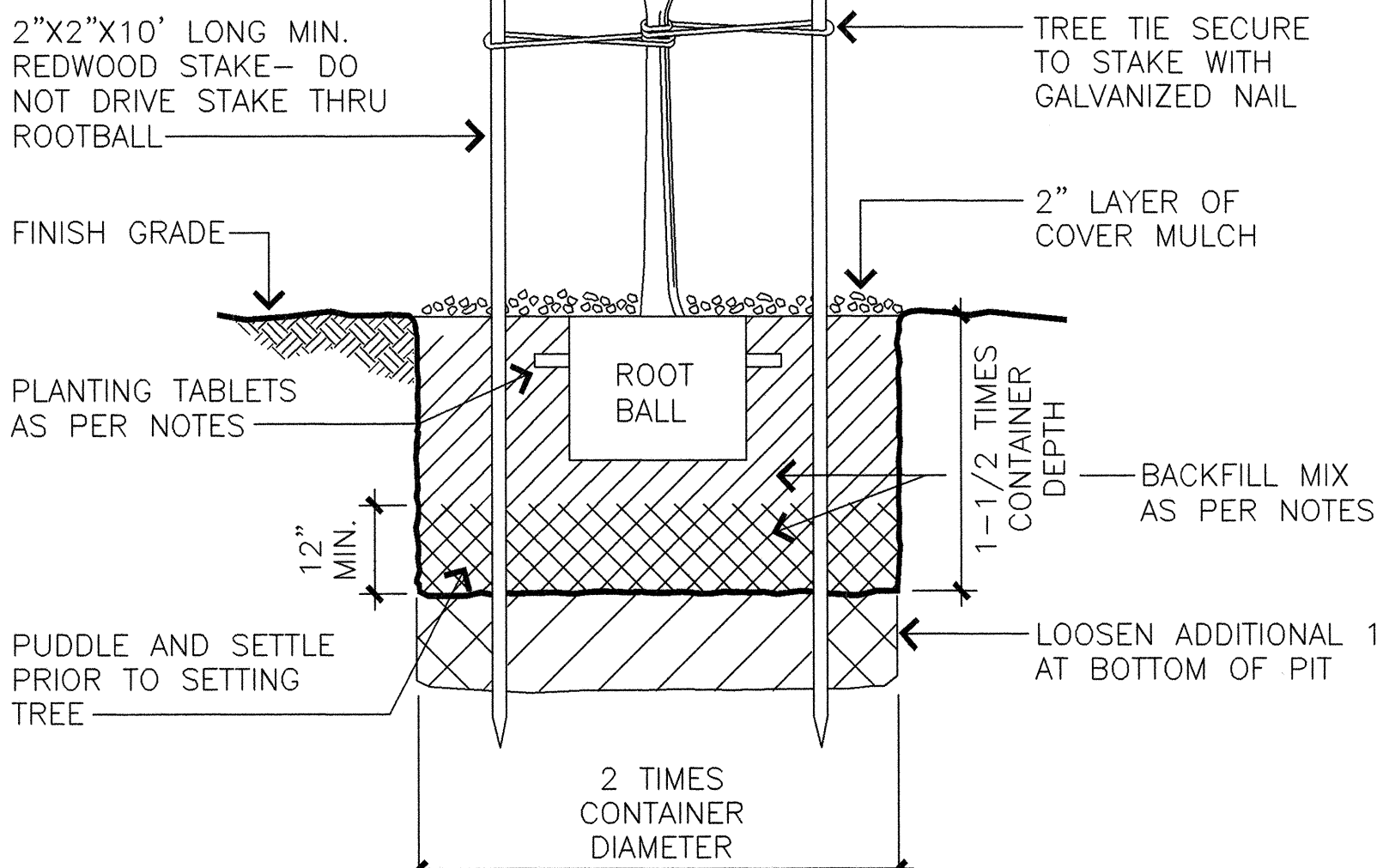


FED. ROAD DIST. NO.	STATE	PROJ. NO.	FISCAL YEAR	SHEET NO.	TOTAL SHEETS
HAWAII	HAW.	83A-01-98	1998	28	28

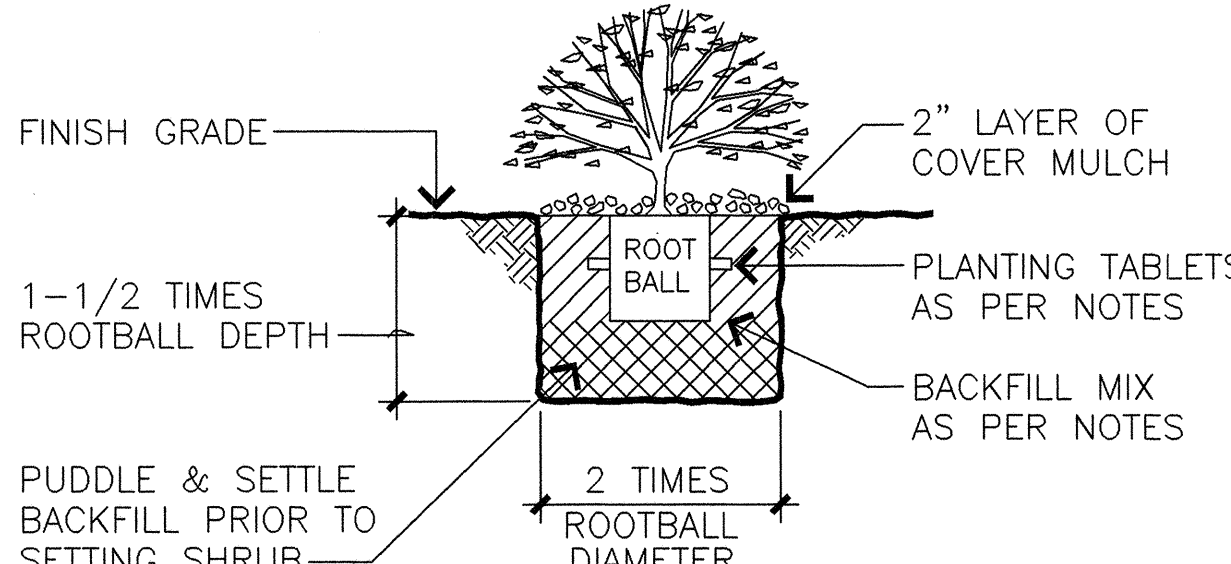
PLANT LIS

QUANTITY	COMMON NAME	BOTANICAL NAME	SIZE	REMARKS
148 EA.	SINGAPORE PLUMERIA	PLUMERIA OBTUSA	7 GAL.	4' HT., 2' SPREAD, 1" CAL., FLOWERING
3200 S.F.	* 'A'ALI'i	DODONAEA VISCOSA	6" POT	12" HT., 6" SPREAD, SEE NOTE NO. 1
13,900 S.F.	* NAUPAKA	SCAEVOLA SERICEA	6" POT	12" HT., 6" SPREAD, SEE NOTE NO. 1
43,500 S.F.	* CREEPING INDIGO	INDIGOFERA SPICATTA	2" POT	6" SPREAD, WELL ROOTED, SEE NOTE NO. 2
43,500 S.F.	* ILIMA PAPA	SIDA FALLAX	2" POT	6" SPREAD, WELL ROOTED, SEE NOTE NO. 2
399,500 S.F.	BUFFELGRASS / ANNUAL RYE MIXTURE	CENCHRUS CILIARIS / LOLIUM MULTIFLORUM	SEED	100LBS. PER ACRE / 75LBS. PER ACRE HYDROMULCH WITH GEOBINDER, SEE SPECIFICATIONS
110,700 S.F. 1533 C.Y.	EROSION CONTROL BLANKET MULCH		1/2" - 1 1/2"	INSTALL ON CUT SLOPES ONLY, SEE SPECIFICATIONS 2" LAYER, UNDER SHRUBS, SEE PLANS, DETAILS AND SPECIFICATIONS
4536 C.Y.	SOIL AMENDMENTS			2" LAYER, SEE SPECIFICATIONS

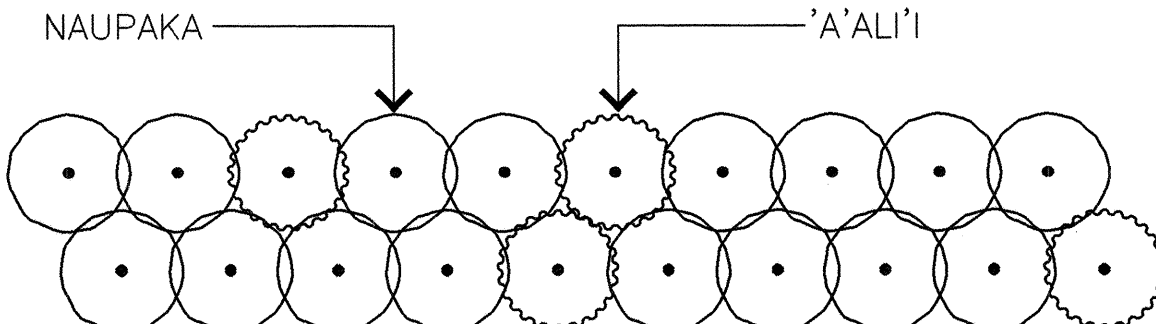
QUANTITIES SHOWN ON PLANT LIST ARE FOR REFERENCE ONLY. VERIFY ACTUAL QUANTITIES AS SHOWN ON PLANS.



1 TREE PLANTING AND STAKING DETAIL
SHT 28 NOT TO SCALE



2 SHRUB PLANTING DETAIL
SHT 28 NOT TO SCALE



3 PLANTING PLAN DETAIL
SHT 28 NOT TO SCALE

PLANTING NOTES

1. PLANT 'Ā'ALI' AND NAUPAKA SHRUBS AT A 1:4 RATIO RESPECTIVELY IN A RANDOM PATTERN. SPACE AT 3' O.C.
2. PLANT CREEPING INDIGO AND 'ILIMA PAPA GROUNDCOVER AT A 1:1 RATIO IN A RANDOM PATTERN. SPACE AT 2' O.C.
3. BACKFILL MIX SHALL CONSIST OF THREE (3) PARTS OF IMPORTED PLANTING SOIL TO ONE (1) PART ORGANIC SOIL AMENDMENTS (SEE SPECIFICATIONS). ADD ONE (1) POUND OF 10-30-10 FERTILIZER TO ONE (1) CUBIC YARD OF BACKFILL MIX. MIX THOROUGHLY ON PROJECT SITE PRIOR TO ANY PLANTING OPERATIONS.
4. PLANTING TABLETS FOR TREES AND SHRUBS SHALL BE AS FOLLOWS:

A) 7 GALLON	3 TABLETS
B) 6" POT	1 TABLETS

USE AGRIFORM TABLETS 20-10-5, 21 GRAM SIZE.
5. PROVIDE 2" COVER MULCH UNDER ALL TREES AND SHRUBS (UNLESS OTHERWISE NOTED ON PLANS)

DATE	REVISION
<div style="text-align: center;"> STATE OF HAWAII DEPARTMENT OF TRANSPORTATION HIGHWAYS DIVISION </div>	
<u>PLANT LIST, DETAILS AND NOTES</u>	
<u>KAMEHAMEHA HIGHWAY LANDSCAPING</u>	
<u>Helemano-Waiialua Junction to</u> <u>Haleiwa Beach Park, Oahu</u> PROJECT NO., 83A-01-98	
SCALE: NONE	DATE: MAY, 1988



THIS WORK WAS PREPARED BY
OR UNDER MY SUPERVISION

тэмаграф