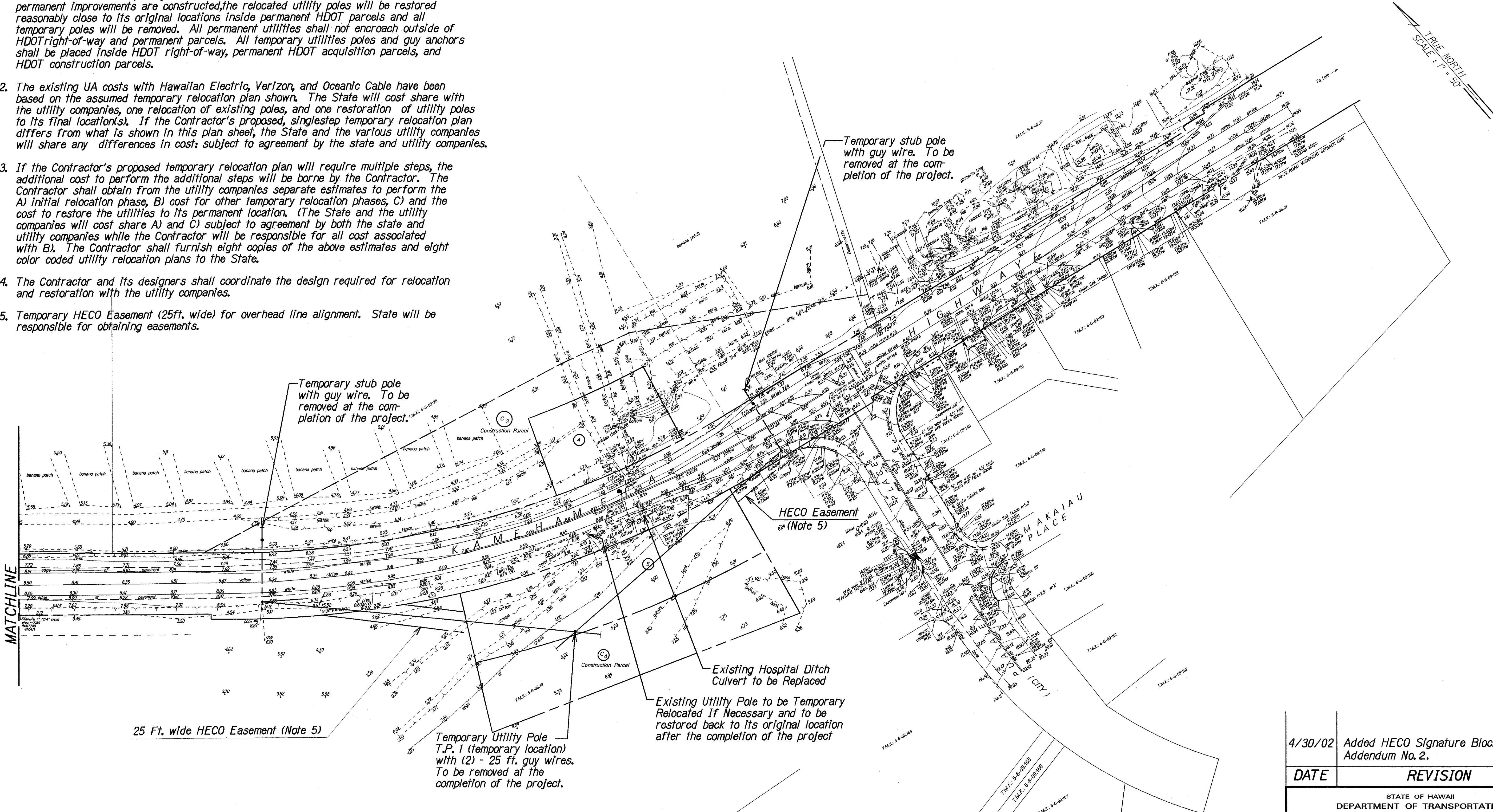


UTILITIES RELOCATION NOTES:

FED. ROAD DIST. NO.	STATE	FED. AID PROJ. NO.	FISCAL YEAR	SHEET NO.	TOTAL SHEETS
HAWAII	HAW.	NH-0830(146)	2002	ADD.14	53

1. HDOT executed Utility Agreements (UA) with Hawaiian Electric, Verizon, Oceanic Cable based on the premise that the existing utility poles shown in the plans will be relocated once to a temporary location and four stub poles will be installed. When the permanent improvements are constructed, the relocated utility poles will be restored reasonably close to its original locations inside permanent HDOT parcels and all temporary poles will be removed. All permanent utilities shall not encroach outside of HDOT right-of-way and permanent parcels. All temporary utilities poles and guy anchors shall be placed inside HDOT right-of-way, permanent HDOT acquisition parcels, and HDOT construction parcels.
2. The existing UA costs with Hawaiian Electric, Verizon, and Oceanic Cable have been based on the assumed temporary relocation plan shown. The State will cost share with the utility companies, one relocation of existing poles, and one restoration of utility poles to its final location(s). If the Contractor's proposed, singlestep temporary relocation plan differs from what is shown in this plan sheet, the State and the various utility companies will share any differences in costs subject to agreement by the state and utility companies.
3. If the Contractor's proposed temporary relocation plan will require multiple steps, the additional cost to perform the additional steps will be borne by the Contractor. The Contractor shall obtain from the utility companies separate estimates to perform the A) Initial relocation phase, B) cost for other temporary relocation phases, C) and the cost to restore the utilities to its permanent location. (The State and the utility companies will cost share A) and C) subject to agreement by both the state and utility companies while the Contractor will be responsible for all cost associated with B). The Contractor shall furnish eight copies of the above estimates and eight color coded utility relocation plans to the State.
4. The Contractor and its designers shall coordinate the design required for relocation and restoration with the utility companies.
5. Temporary HECO Easement (25ft. wide) for overhead line alignment. State will be responsible for obtaining easements.



SURVEY PLOTTED BY	DATE
DESIGNED BY	
NOTED BY	
CHECKED BY	

DRAWING REVIEW  
Reviewed for HECO's Facilities Only  
Date 5/16/02 By *AKL*  
Engineering Department  
Hawaiian Electric Company, Inc.

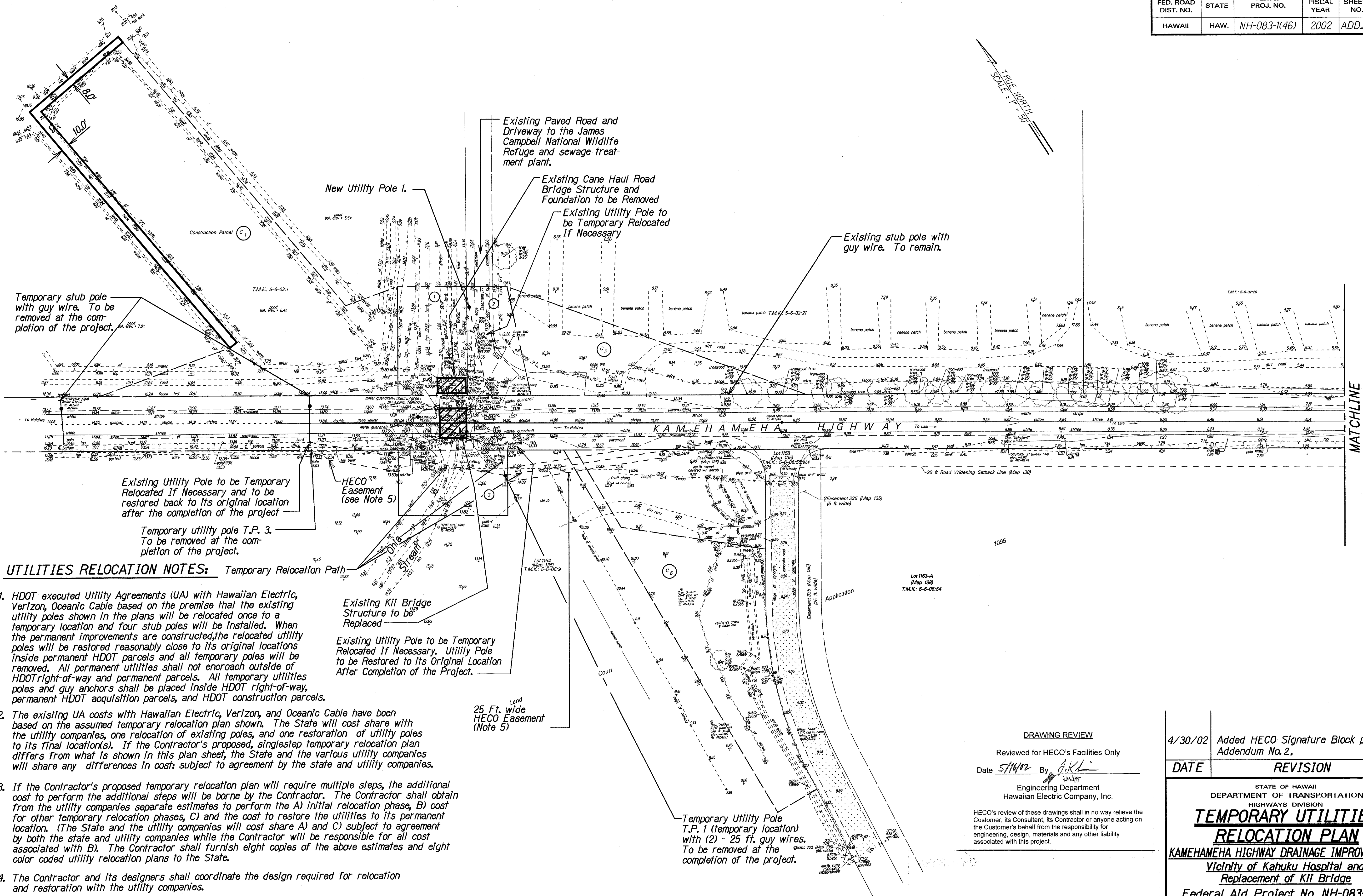
HECO's review of these drawings shall in no way relieve the Customer, its Consultant, its Contractor or anyone acting on the Customer's behalf from the responsibility for engineering, design, materials and any other liability associated with this project.

APPROVED:  
HAWAIIAN ELECTRIC COMPANY  
DATE

4/30/02	Added HECO Signature Block per Addendum No. 2.
DATE	REVISION
STATE OF HAWAII DEPARTMENT OF TRANSPORTATION HIGHWAYS DIVISION <b>TEMPORARY UTILITIES RELOCATION PLAN</b> KAMEHAMEHA HIGHWAY DRAINAGE IMPROVEMENTS Vicinity of Kahuku Hospital and Replacement of Kii Bridge Federal Aid Project No. NH-083-1(46) Date: April 2002	
SHEET No. 1 OF 2 SHEETS	



FED. ROAD DIST. NO.	STATE	FED. AID PROJ. NO.	FISCAL YEAR	SHEET NO.	TOTAL SHEETS
HAWAII	HAW.	NH-083-1(46)	2002	ADD.15	53



#### UTILITIES RELOCATION NOTES:

1. HDOT executed Utility Agreements (UA) with Hawaiian Electric, Verizon, Oceanic Cable based on the premise that the existing utility poles shown in the plans will be relocated once to a temporary location and four stub poles will be installed. When the permanent improvements are constructed, the relocated utility poles will be restored reasonably close to its original locations inside permanent HDOT parcels and all temporary poles will be removed. All permanent utilities shall not encroach outside of HDOT right-of-way and permanent parcels. All temporary utilities poles and guy anchors shall be placed inside HDOT right-of-way, permanent HDOT acquisition parcels, and HDOT construction parcels.
2. The existing UA costs with Hawaiian Electric, Verizon, and Oceanic Cable have been based on the assumed temporary relocation plan shown. The State will cost share with the utility companies, one relocation of existing poles, and one restoration of utility poles to its final location(s). If the Contractor's proposed, singlestep temporary relocation plan differs from what is shown in this plan sheet, the State and the various utility companies will share any differences in costs subject to agreement by the state and utility companies.
3. If the Contractor's proposed temporary relocation plan will require multiple steps, the additional cost to perform the additional steps will be borne by the Contractor. The Contractor shall obtain from the utility companies separate estimates to perform the A) initial relocation phase, B) cost for other temporary relocation phases, C) and the cost to restore the utilities to its permanent location. (The State and the utility companies will cost share A) and C) subject to agreement by both the state and utility companies while the Contractor will be responsible for all cost associated with B). The Contractor shall furnish eight copies of the above estimates and eight color coded utility relocation plans to the State.
4. The Contractor and its designers shall coordinate the design required for relocation and restoration with the utility companies.
5. Temporary HECO Easement (25ft. wide) for overhead line alignment. State will be responsible for obtaining easements.

#### DRAWING REVIEW

Reviewed for HECO's Facilities Only

Date 5/14/02 By AKL

Engineering Department  
Hawaiian Electric Company, Inc.

HECO's review of these drawings shall in no way relieve the Customer, its Consultant, its Contractor or anyone acting on the Customer's behalf from the responsibility for engineering, design, materials and any other liability associated with this project.

4/30/02 Added HECO Signature Block per Addendum No. 2.

DATE REVISION

STATE OF HAWAII  
DEPARTMENT OF TRANSPORTATION  
HIGHWAYS DIVISION  
**TEMPORARY UTILITIES  
RELOCATION PLAN**  
KAMEHAMEHA HIGHWAY DRAINAGE IMPROVEMENTS  
Vicinity of Kahuku Hospital and  
Replacement of Kii Bridge  
Federal Aid Project No. NH-083-1(46)  
Date: April 2002

SHEET No. 2 OF 2 SHEETS

ADD.15

DATE	_____
SURVEY PLOTTED BY	_____
ORIGINAL PLAN	_____
DESIGNED BY	_____
NOTED BY	_____
CHECKED BY	_____