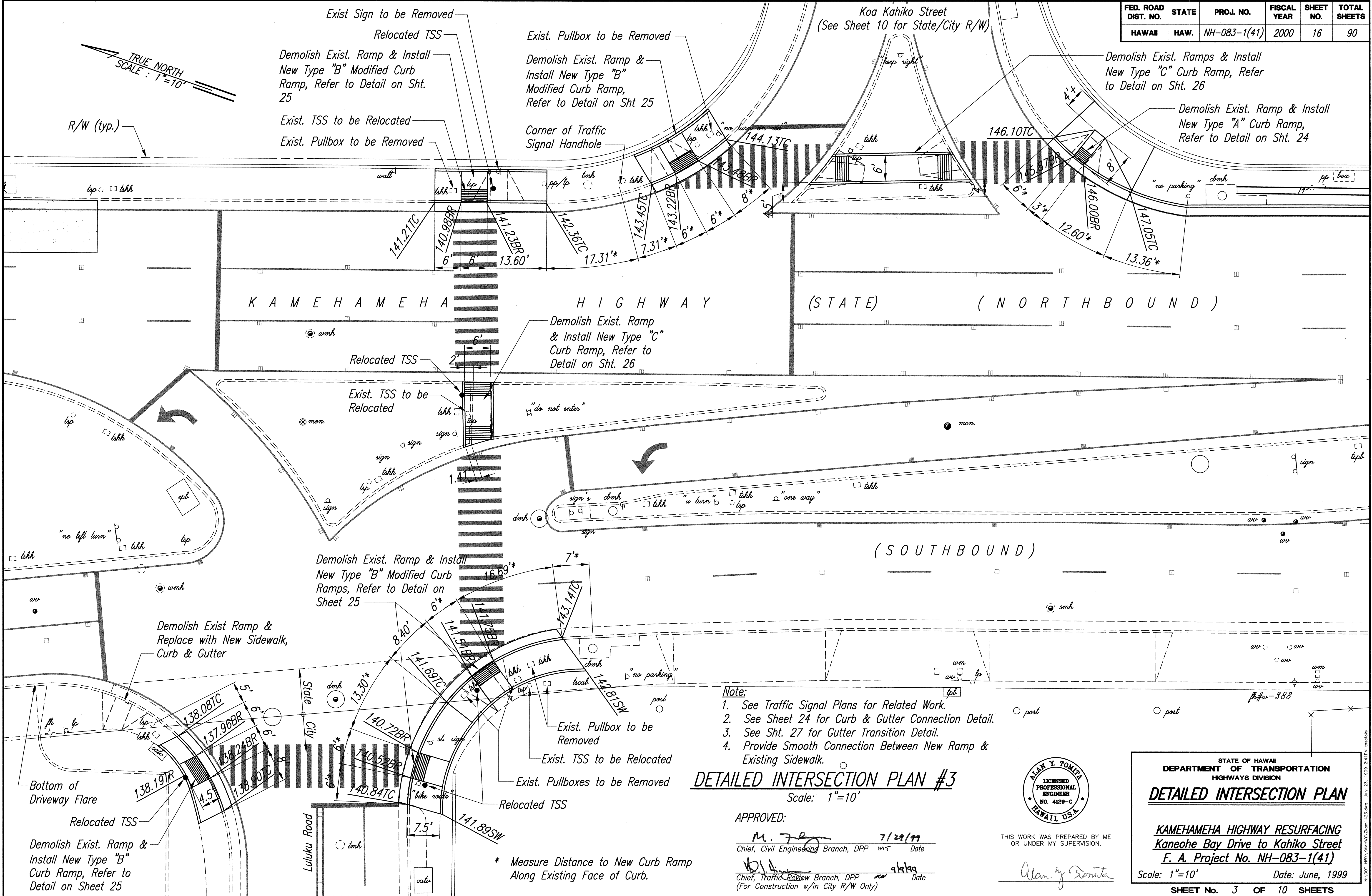
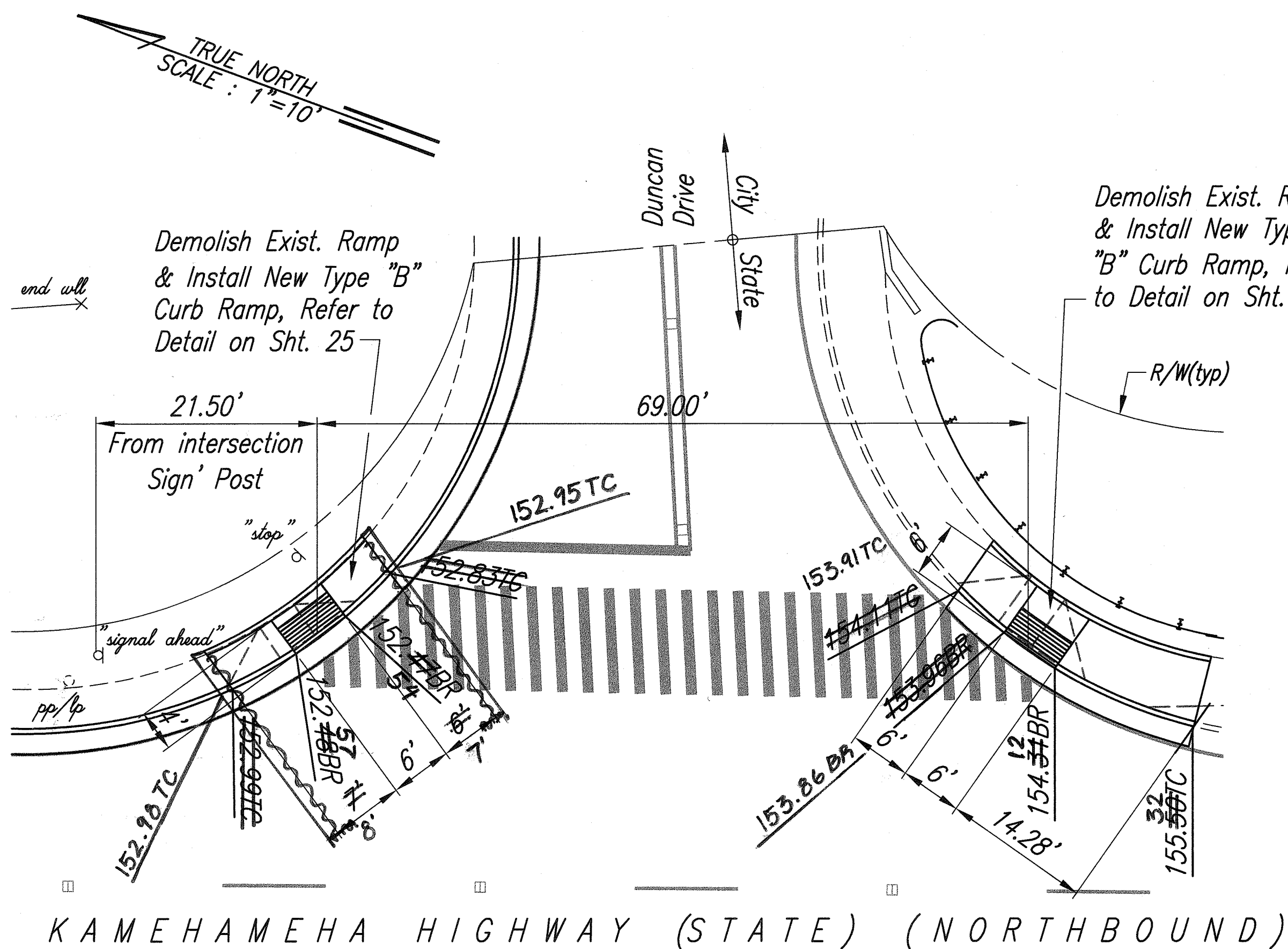


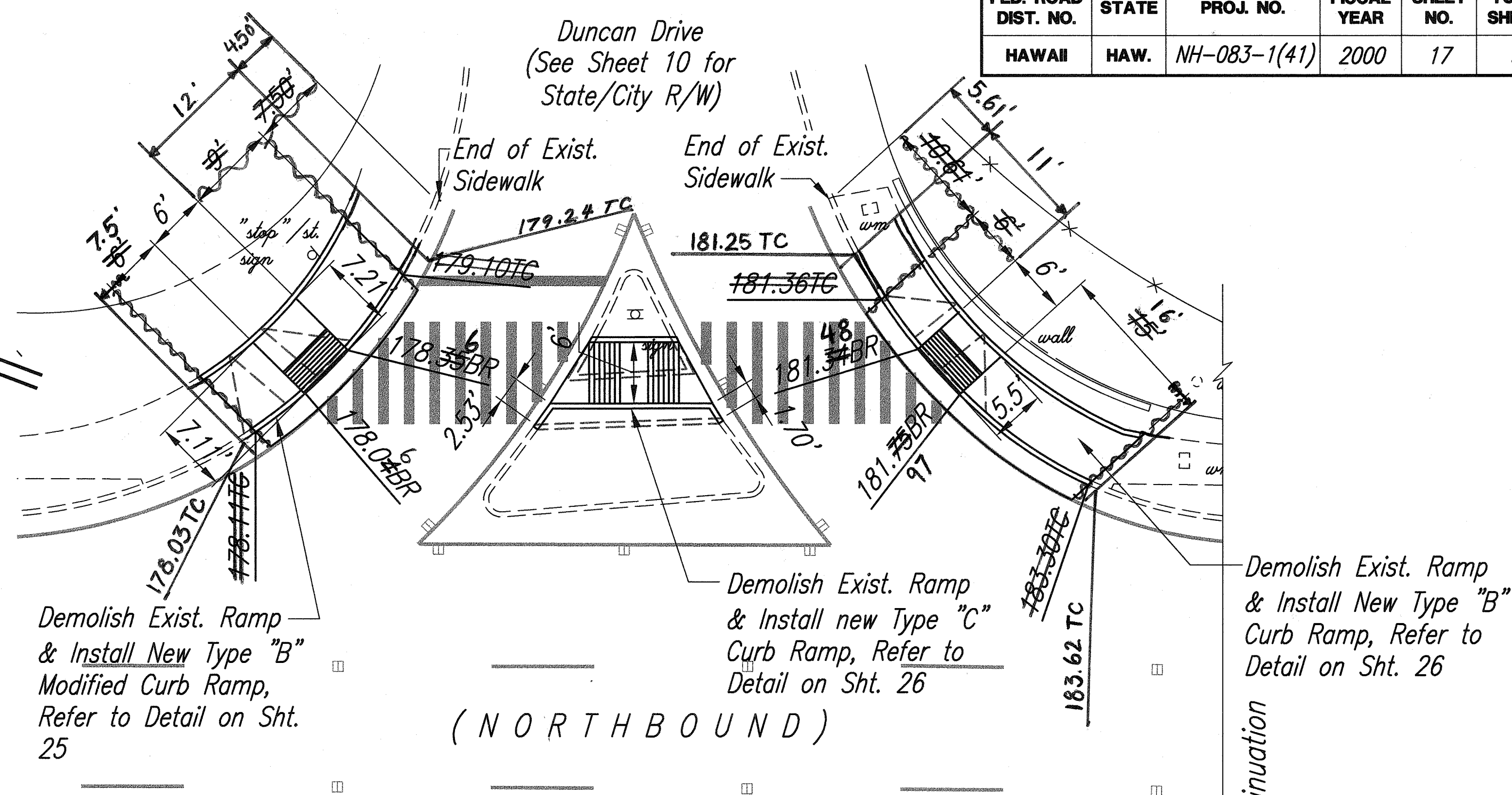
FED. ROAD DIST. NO.	STATE	PROJ. NO.	FISCAL YEAR	SHEET NO.	TOTAL SHEETS
HAWAII	HAW.	NH-083-1(41)	2000	16	90



FED. ROAD DIST. NO.	STATE	PROJ. NO.	FISCAL YEAR	SHEET NO.	TOTAL SHEETS
HAWAII	HAW.	NH-083-1(41)	2000	17	90



DETAILED INTERSECTION PLAN #4
 Scale: 1"=10'

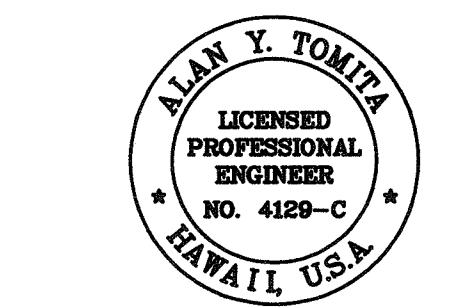


DETAILED INTERSECTION PLAN #5
 Scale: 1"=10'

- Note:**
1. See Sheet 24 for Curb & Gutter Connection Detail.
 2. See Sht. 27 for Gutter Transition Detail.
 3. Provide Smooth Connection Between New Ramp & Existing Sidewalk.

APPROVED:
 M. 7/29/99
 Chief, Civil Engineering Branch, DPP Date

* Measure Distance to New Curb Ramp
 Along Existing Face of Curb.



THIS WORK WAS PREPARED BY ME OR UNDER MY SUPERVISION.

Alan Y. Tomita

STATE OF HAWAII
 DEPARTMENT OF TRANSPORTATION
 HIGHWAYS DIVISION

DETAILED INTERSECTION PLAN

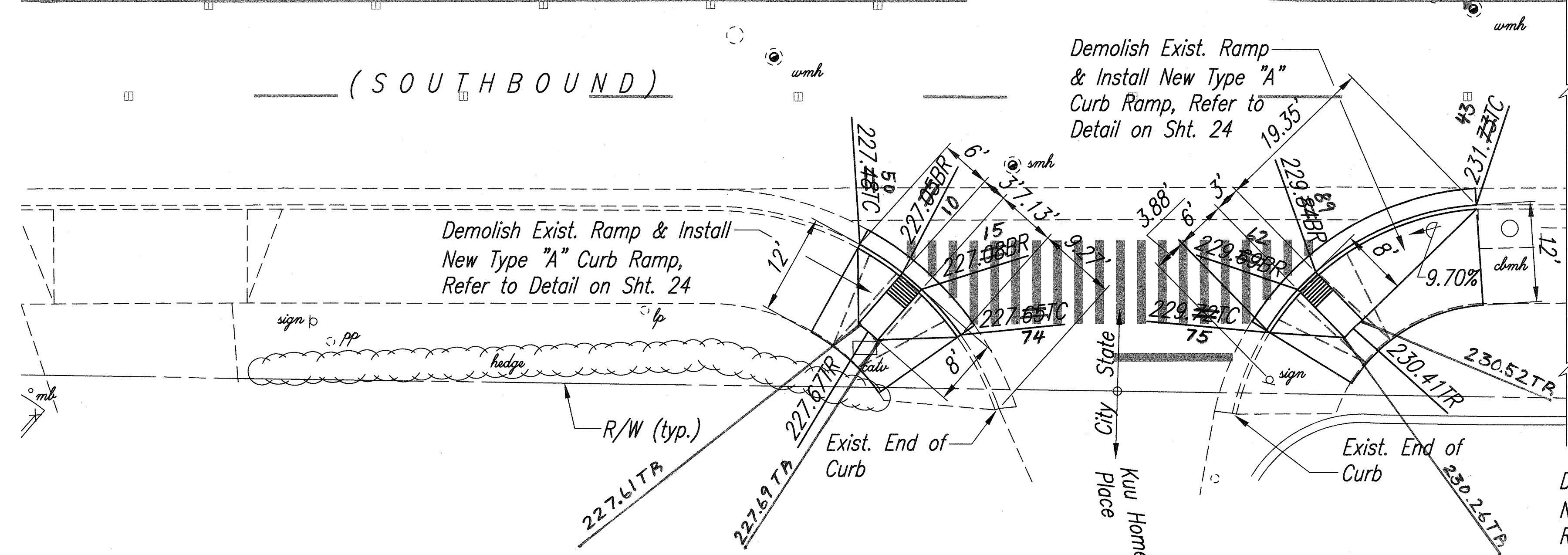
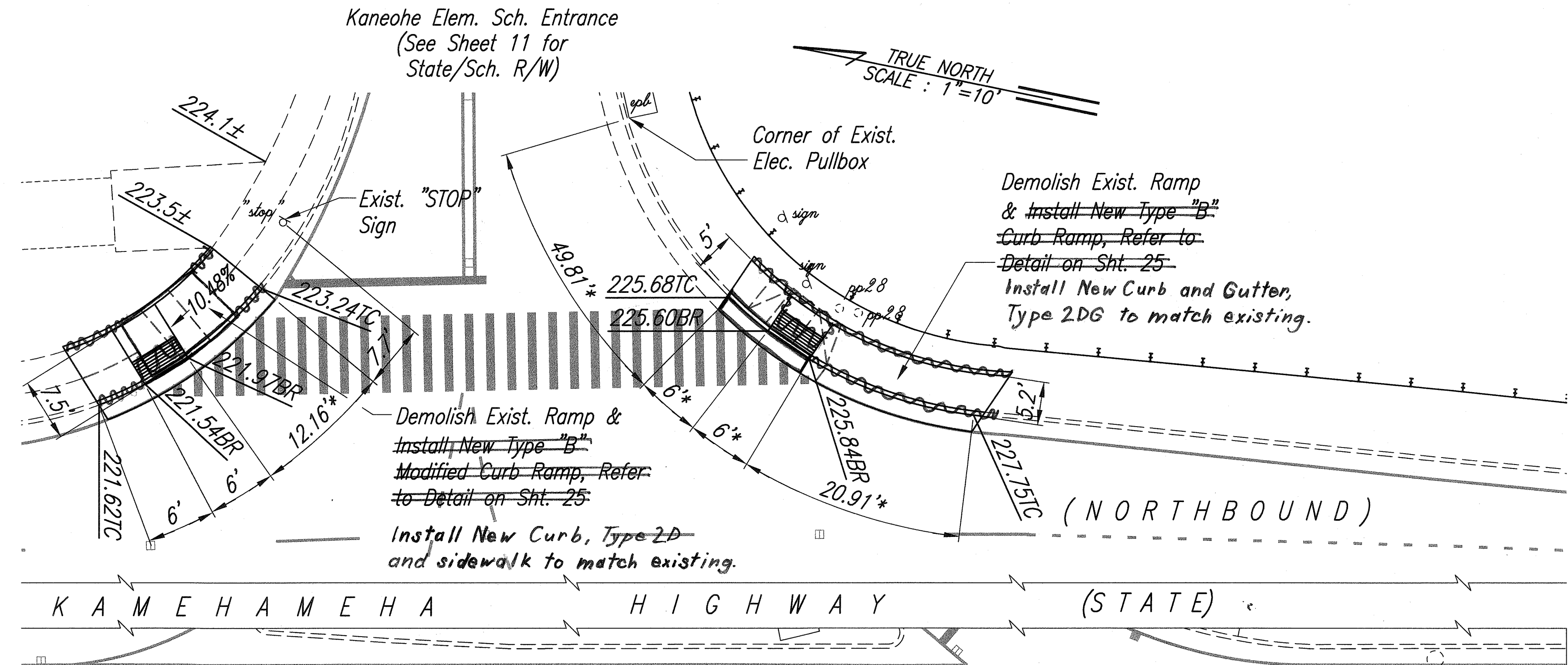
 KAMEHAMEHA HIGHWAY RESURFACING
 Kaneohe Bay Drive to Kahiko Street
 F. A. Project No. NH-083-1(41)
 Scale: 1"=10' Date: June, 1999

SHEET No. 4 OF 10 SHEETS

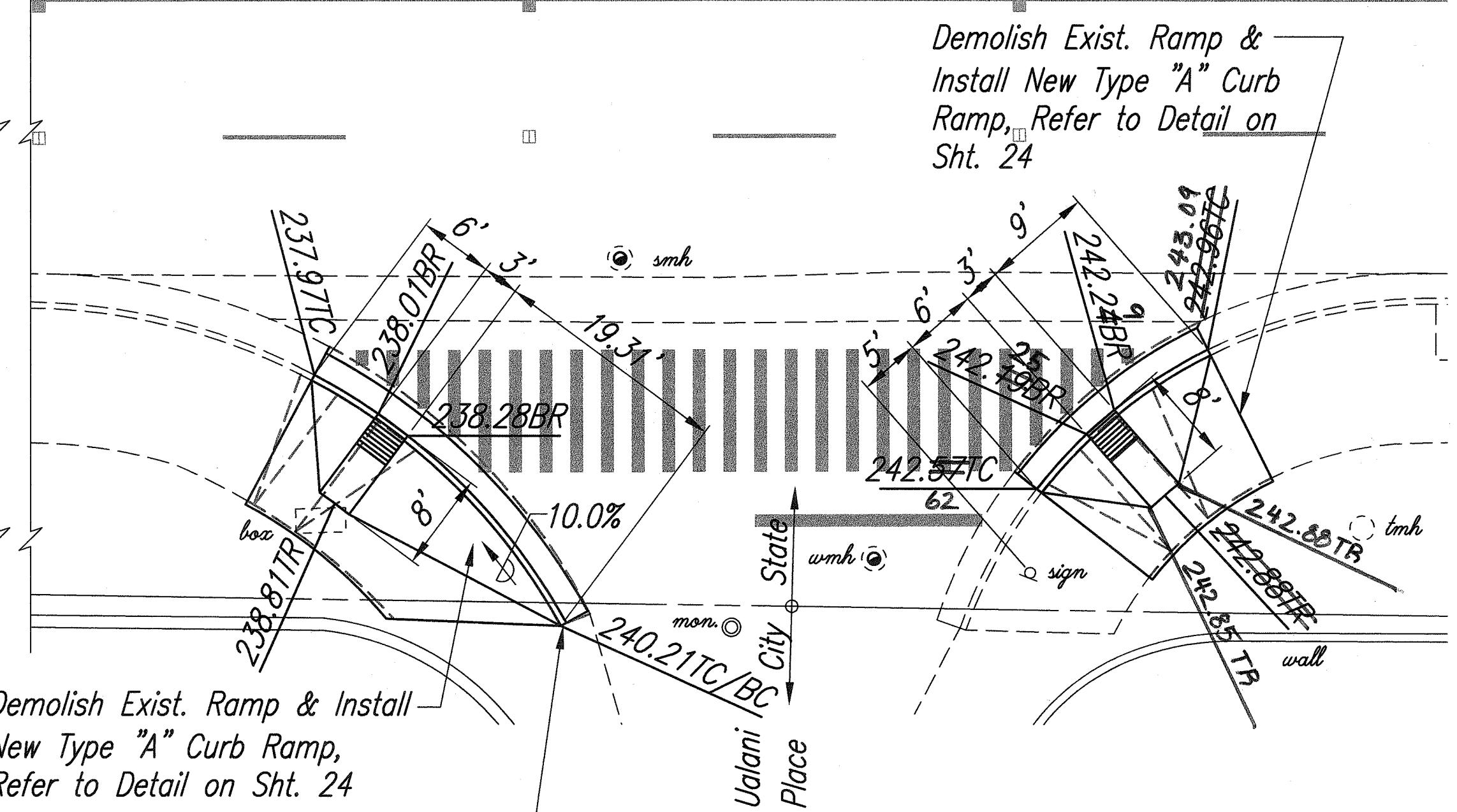
SURVEY PLOTTED BY	DATE
DRAWN BY	
TRACED BY	
QUANTITIES BY	
CHECKED BY	
ORIGINAL PLAN	No.
NOTE BOOK	

"AS-BUILT"

FED. ROAD DIST. NO.	STATE	PROJ. NO.	FISCAL YEAR	SHEET NO.	TOTAL SHEETS
HAWAII	HAW.	NH-083-1(41)	2000	19	90



DETAILED INTERSECTION PLAN #7
Scale: 1"=10'



DETAILED INTERSECTION PLAN #8
Scale: 1"=10'

ORIGINAL PLAN	SURVEY PLOTTED BY	DATE
	DRAWN BY	
	TRACED BY	
	NOTED BY	
NOTE BOOK	QUANTITIES BY	
	CHECKED BY	

APPROVED:

M. J. [Signature] 7/22/99
Chief, Civil Engineering Branch, DPP Date
[Signature] 7/22/99
Chief, Traffic Review Branch, DPP Date
(For Construction w/in City R/W Only)

* Measure Distance to New Curb Ramp Along Existing Face of Curb.

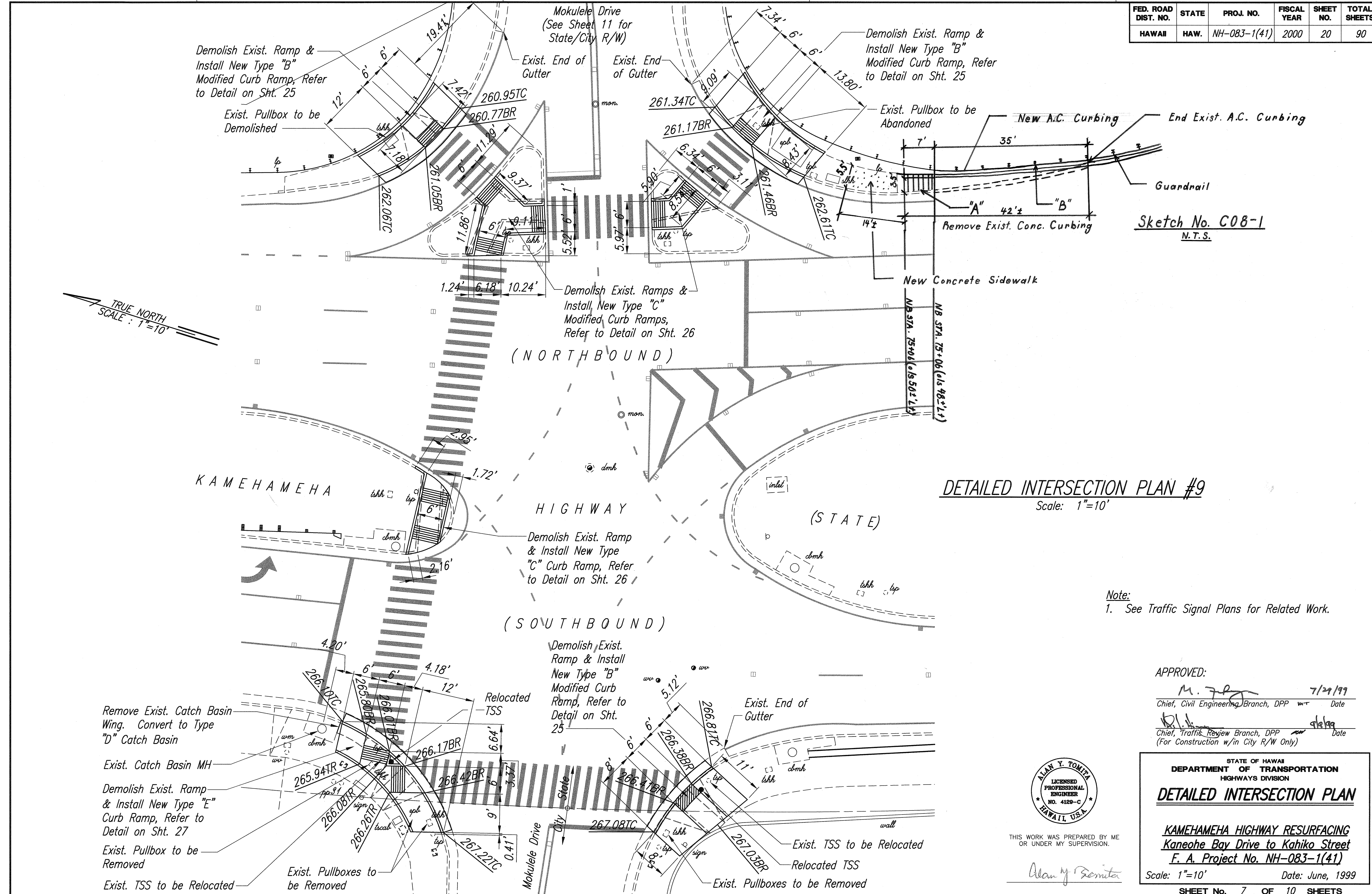
ALAN Y. TOMITA
LICENSED PROFESSIONAL ENGINEER
NO. 4129-C
HAWAII, U.S.A.
THIS WORK WAS PREPARED BY ME OR UNDER MY SUPERVISION.
Alan Y. Tomita

STATE OF HAWAII
DEPARTMENT OF TRANSPORTATION
HIGHWAYS DIVISION
DETAILED INTERSECTION PLAN

KAMEHAMEHA HIGHWAY RESURFACING
Kaneohe Bay Drive to Kahiko Street
F. A. Project No. NH-083-1(41)
Scale: 1"=10' Date: June, 1999
SHEET No. 6 OF 10 SHEETS

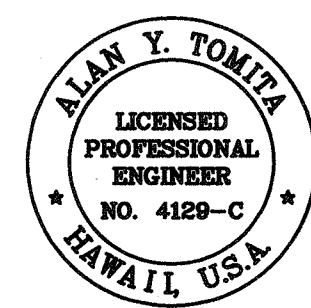
"AS-BUILT"

FED. ROAD DIST. NO.	STATE	PROJ. NO.	FISCAL YEAR	SHEET NO.	TOTAL SHEETS
HAWAII	HAW.	NH-083-1(41)	2000	20	90



Note:
1. See Traffic Signal Plans for Related Work.

APPROVED:
M. J. [Signature] 7/29/99
Chief, Civil Engineering Branch, DPP Date
[Signature] 9/1/99
Chief, Traffic Review Branch, DPP Date
(For Construction w/in City R/W Only)



THIS WORK WAS PREPARED BY ME OR UNDER MY SUPERVISION.

Alan Y. Tomita

STATE OF HAWAII
DEPARTMENT OF TRANSPORTATION
HIGHWAYS DIVISION

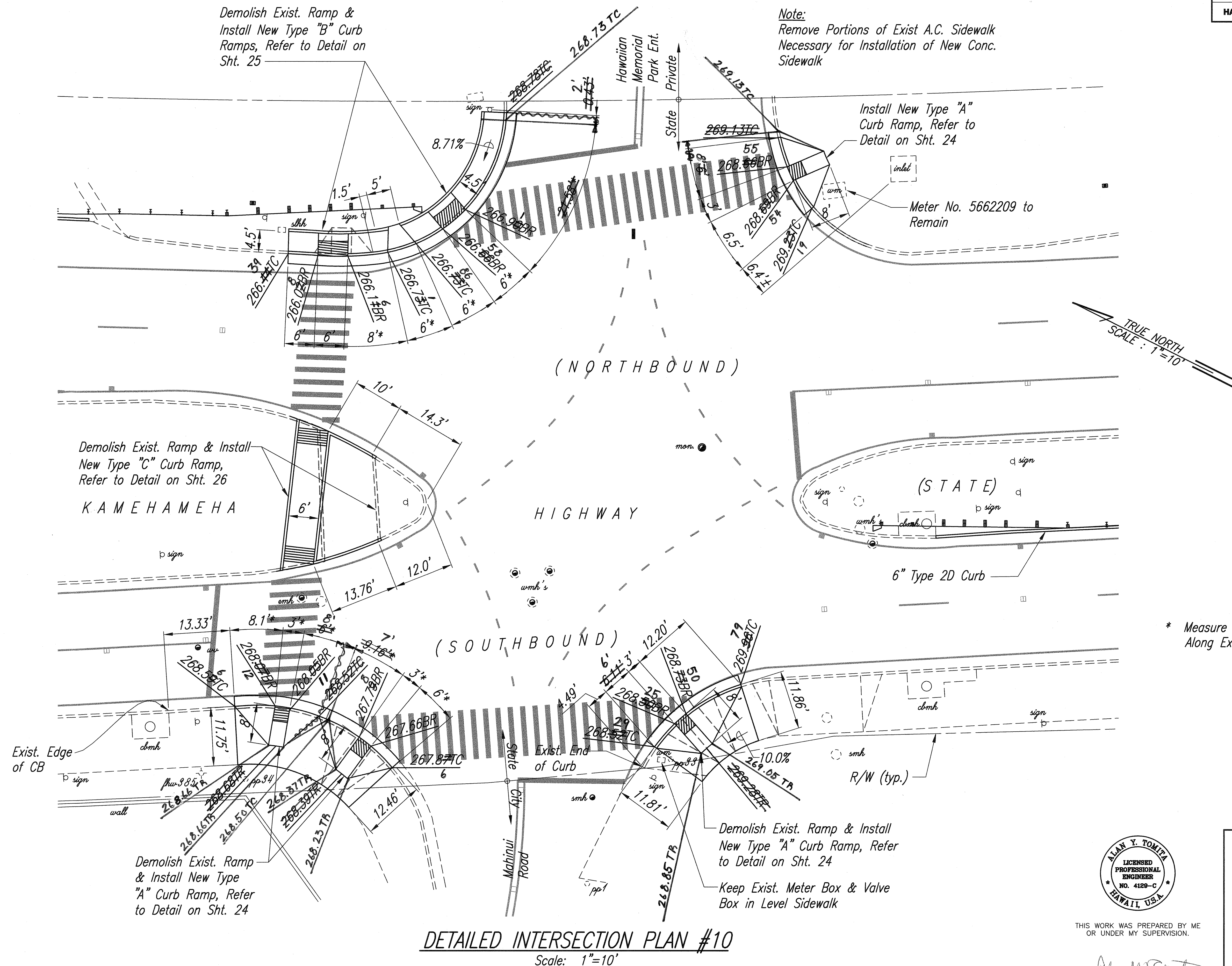
DETAILED INTERSECTION PLAN

KAMEHAMEHA HIGHWAY RESURFACING
Kaneohe Bay Drive to Kahiko Street
F. A. Project No. NH-083-1(41)
Scale: 1"=10' Date: June, 1999

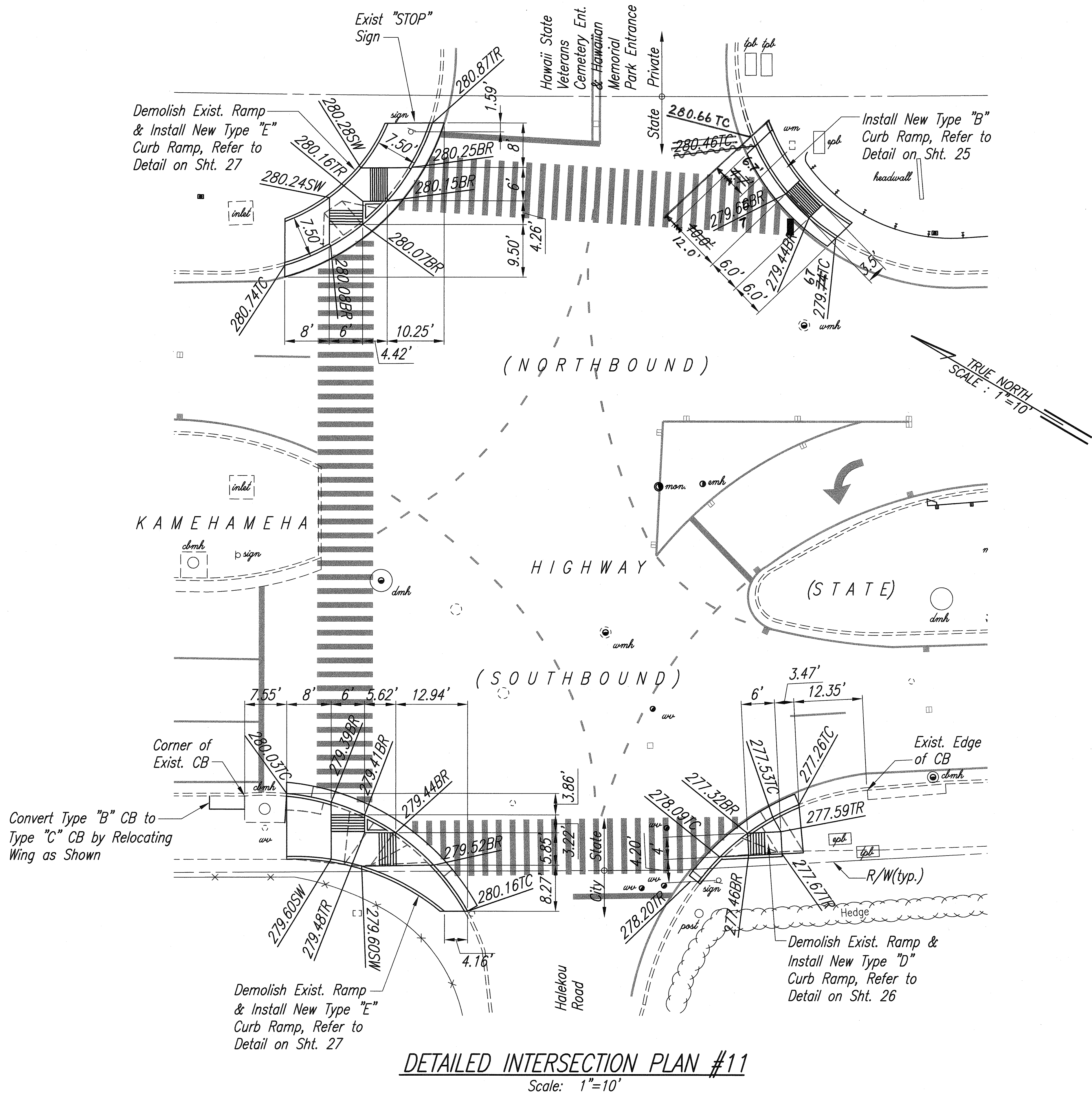
SHEET No. 7 OF 10 SHEETS

ORIGINAL PLAN	SURVEY PLOTTED BY	DATE
NOTE BOOK	DRAWN BY	
	TRACED BY	
	QUANTITIES BY	
	CHECKED BY	
No.		

FED. ROAD DIST. NO.	STATE	PROJ. NO.	FISCAL YEAR	SHEET NO.	TOTAL SHEETS
HAWAII	HAW.	NH-083-1(41)	2000	21	90



FED. ROAD DIST. NO.	STATE	PROJ. NO.	FISCAL YEAR	SHEET NO.	TOTAL SHEETS
HAWAII	HAW.	NH-083-1(41)	2000	22	90

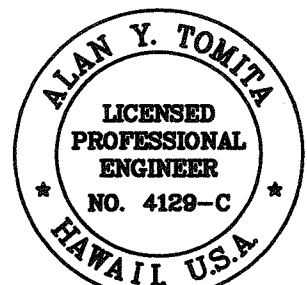


ORIGINAL PLAN	SURVEY PLOTTED BY	DATE
NOTE BOOK	DRAWN BY	
No.	TRACED BY	
	QUANTITIES BY	
	CHECKED BY	

APPROVED:

M. Fagan 7/29/99
Chief, Civil Engineering Branch, DPP Date

K. L. L. 9/9/99
Chief, Traffic Review Branch, DPP Date
(For Construction w/in City R/W Only)



THIS WORK WAS PREPARED BY ME
OR UNDER MY SUPERVISION.

Alan Y. Tomita

STATE OF HAWAII
DEPARTMENT OF TRANSPORTATION
HIGHWAYS DIVISION
DETAILED INTERSECTION PLAN

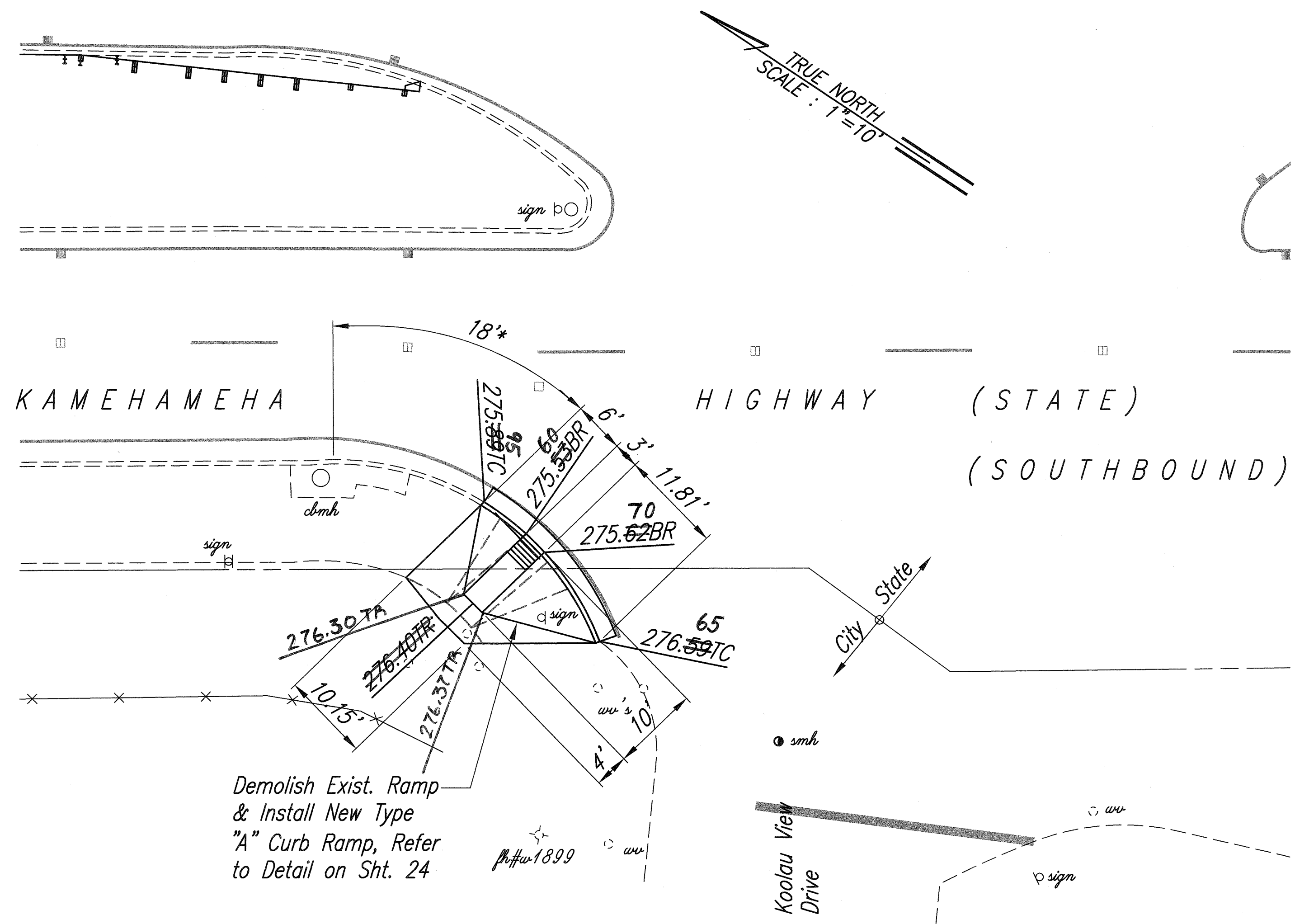
KAMEHAMEHA HIGHWAY RESURFACING
Kaneohe Bay Drive to Kahiko Street
F. A. Project No. NH-083-1(41)

Scale: 1"=10' Date: June, 1999

SHEET No. 9 OF 10 SHEETS

"AS-BUILT"

FED. ROAD DIST. NO.	STATE	PROJ. NO.	FISCAL YEAR	SHEET NO.	TOTAL SHEETS
HAWAII	HAW.	NH-083-1(41)	2000	23	90



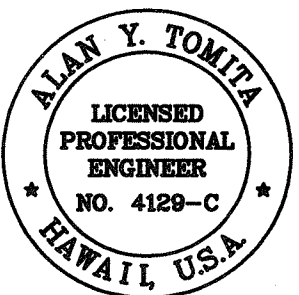
DETAILED INTERSECTION PLAN #12

Scale: 1"=10'

APPROVED:

M. J. [Signature] 7/27/99
Chief, Civil Engineering Branch, DPP Date

[Signature] 9/9/99
Chief, Traffic Review Branch, DPP Date
(For Construction w/in City R/W Only)



THIS WORK WAS PREPARED BY ME
OR UNDER MY SUPERVISION.

Alan Y. Tomita

**STATE OF HAWAII
DEPARTMENT OF TRANSPORTATION
HIGHWAYS DIVISION
DETAILED INTERSECTION PLAN**

**KAMEHAMEHA HIGHWAY RESURFACING
Kaneohe Bay Drive to Kahiko Street
F. A. Project No. NH-083-1(41)**

Scale: 1"=10' Date: June, 1999

SHEET No. 10 OF 10 SHEETS

"AS-BUILT"

ORIGINAL PLAN	SURVEY PLOTTED BY	DATE
NOTE BOOK	DRAWN BY	
	TRACED BY	
	DESIGNED BY	
	QUANTITIES BY	
	CHECKED BY	
No.		