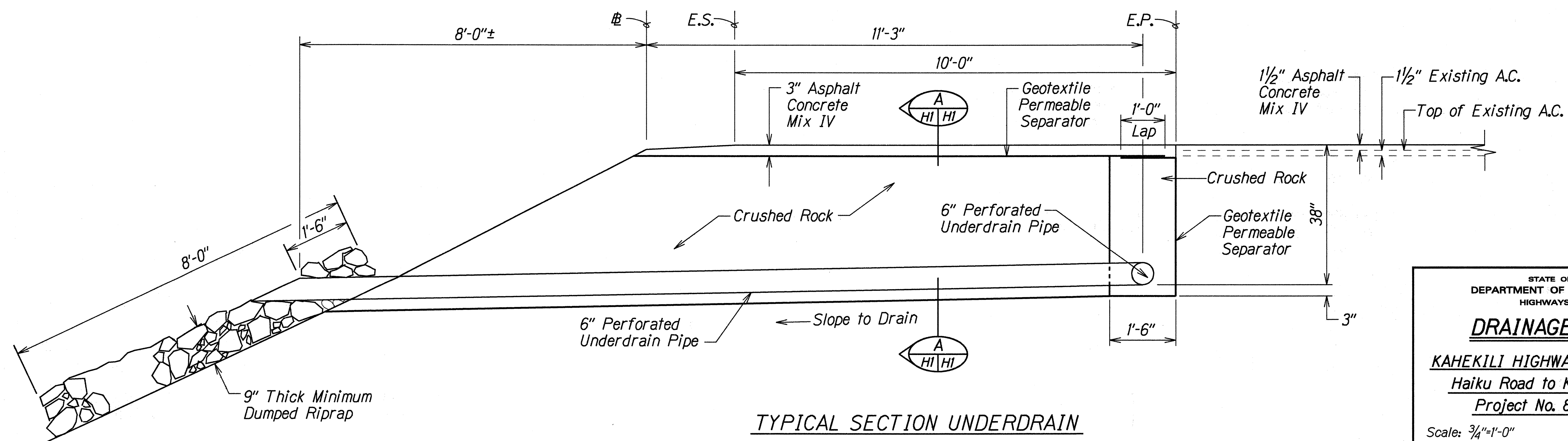
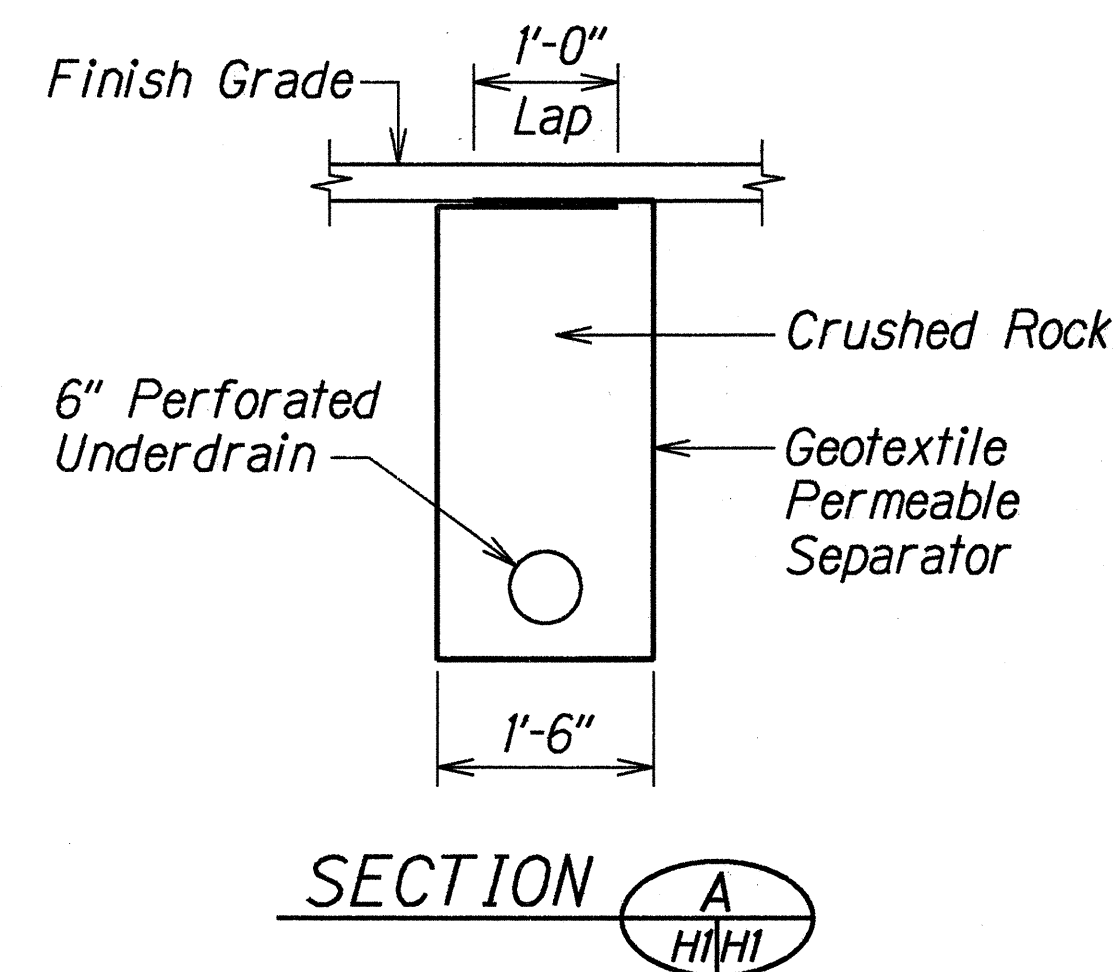
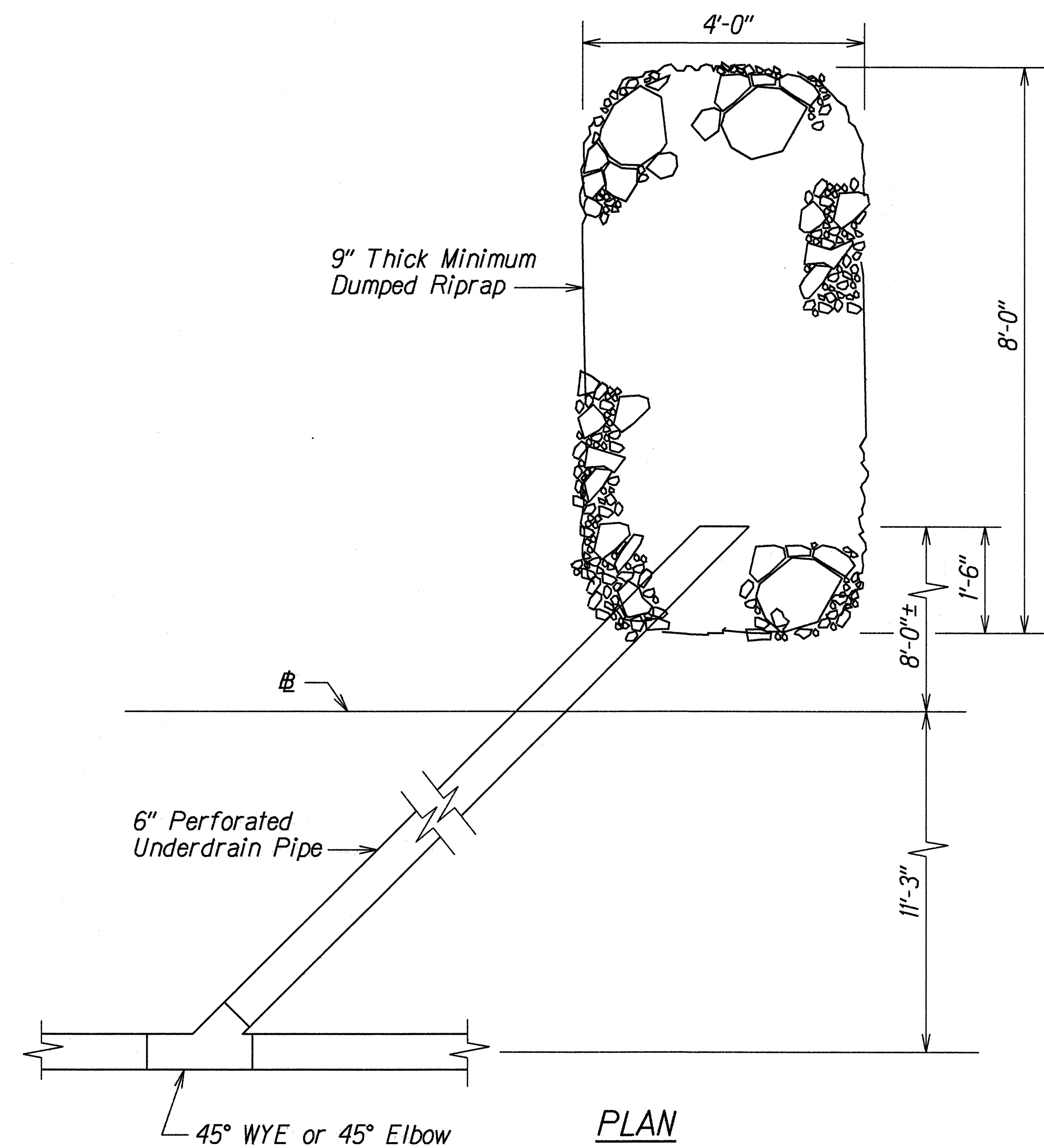


FED. ROAD DIST. NO.	STATE	PROJ. NO.	FISCAL YEAR	SHEET NO.	TOTAL SHEETS
HAWAII	HAW.	83F-01-97M	1997	8	28



ORIGINAL PLAN	DATE
DESIGNED BY	4/21/97
CHECKED BY	
NOTED BY	
DATE	

STATE OF HAWAII  
DEPARTMENT OF TRANSPORTATION  
HIGHWAYS DIVISION

**DRAINAGE DETAILS**

KAHEKILI HIGHWAY RESURFACING  
Haiku Road to Kahaluu Bridge  
Project No. 83F-01-97M

Scale: 3/4"=1'-0" Date: Apr. 1997

SHEET No. HI OF 2 SHEETS

