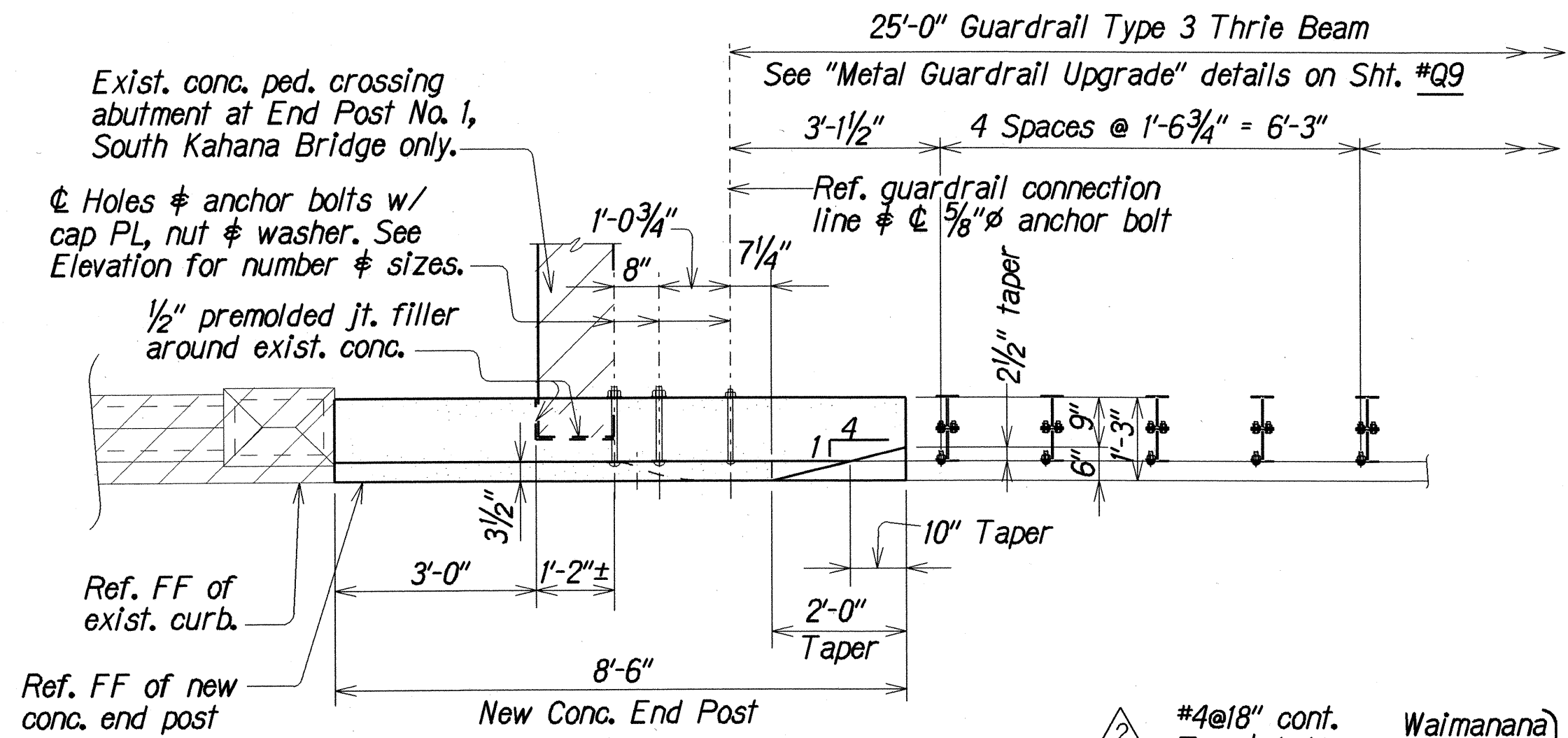
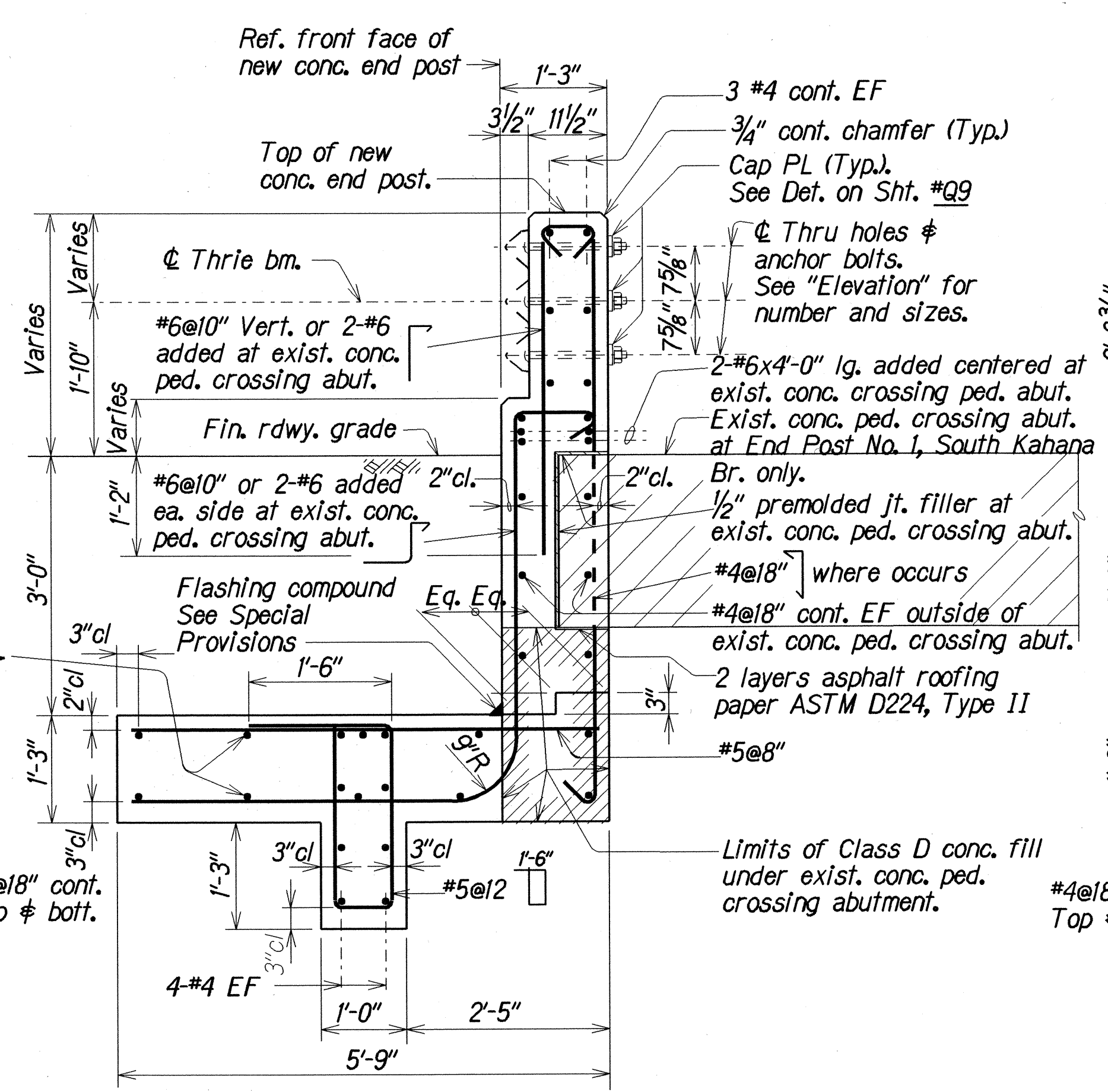


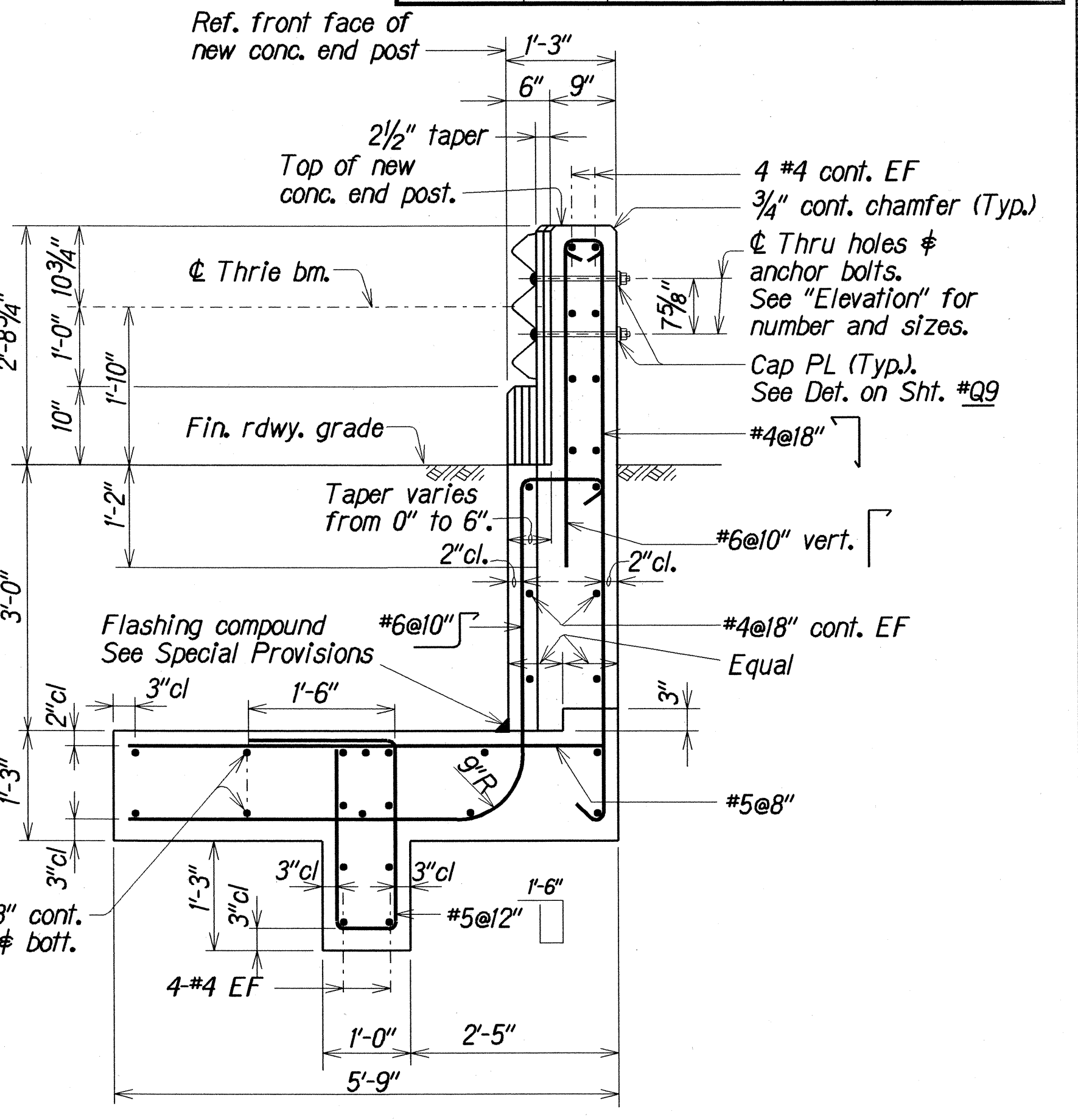
FED. ROAD DIST. NO.	STATE	PROJ. NO.	FISCAL YEAR	SHEET NO.	TOTAL SHEETS
HAWAII	HAW.	83D-01-96M	1996	C.O. 28	50



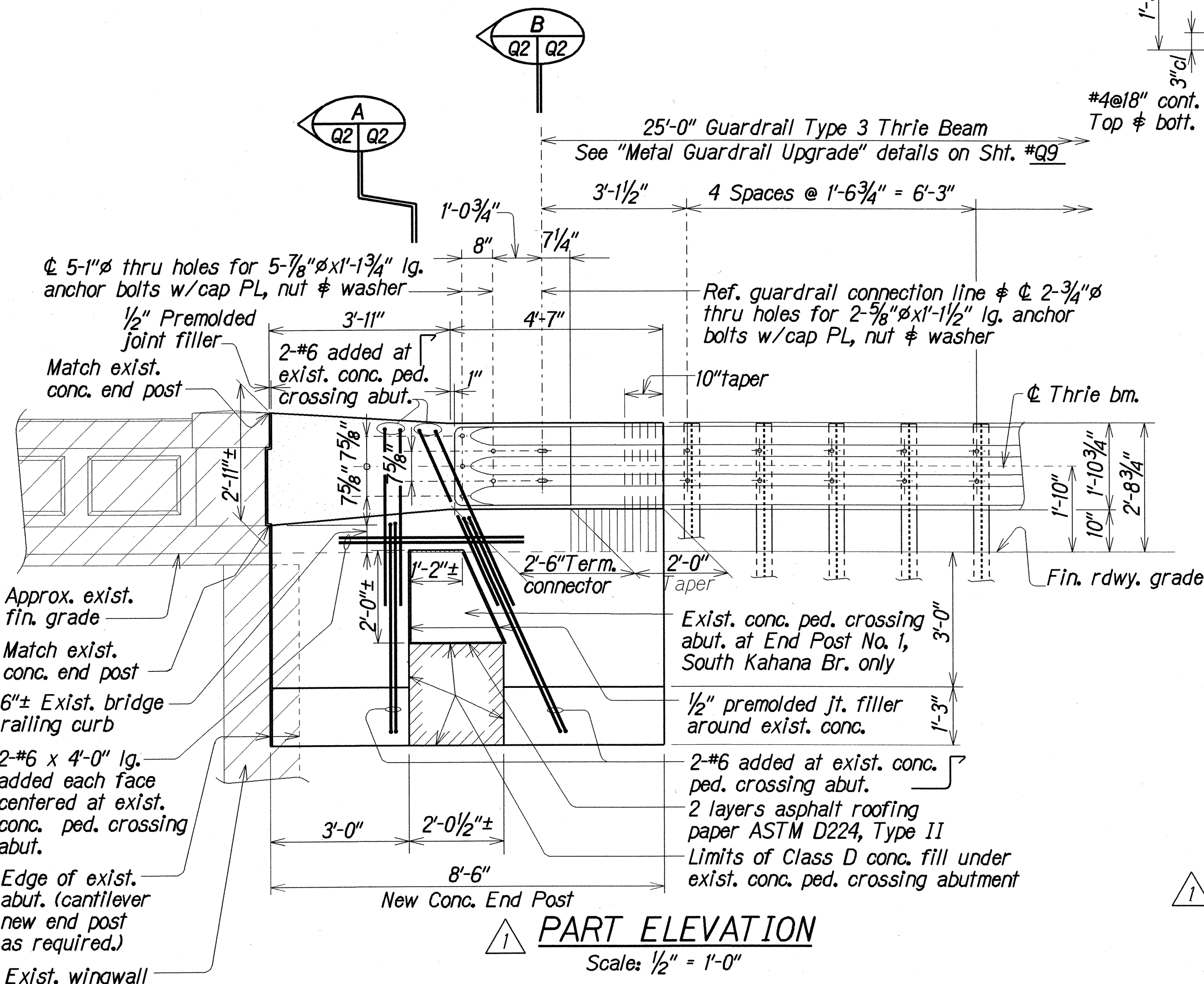
PART PLAN
Scale: 1/2" = 1'-0"



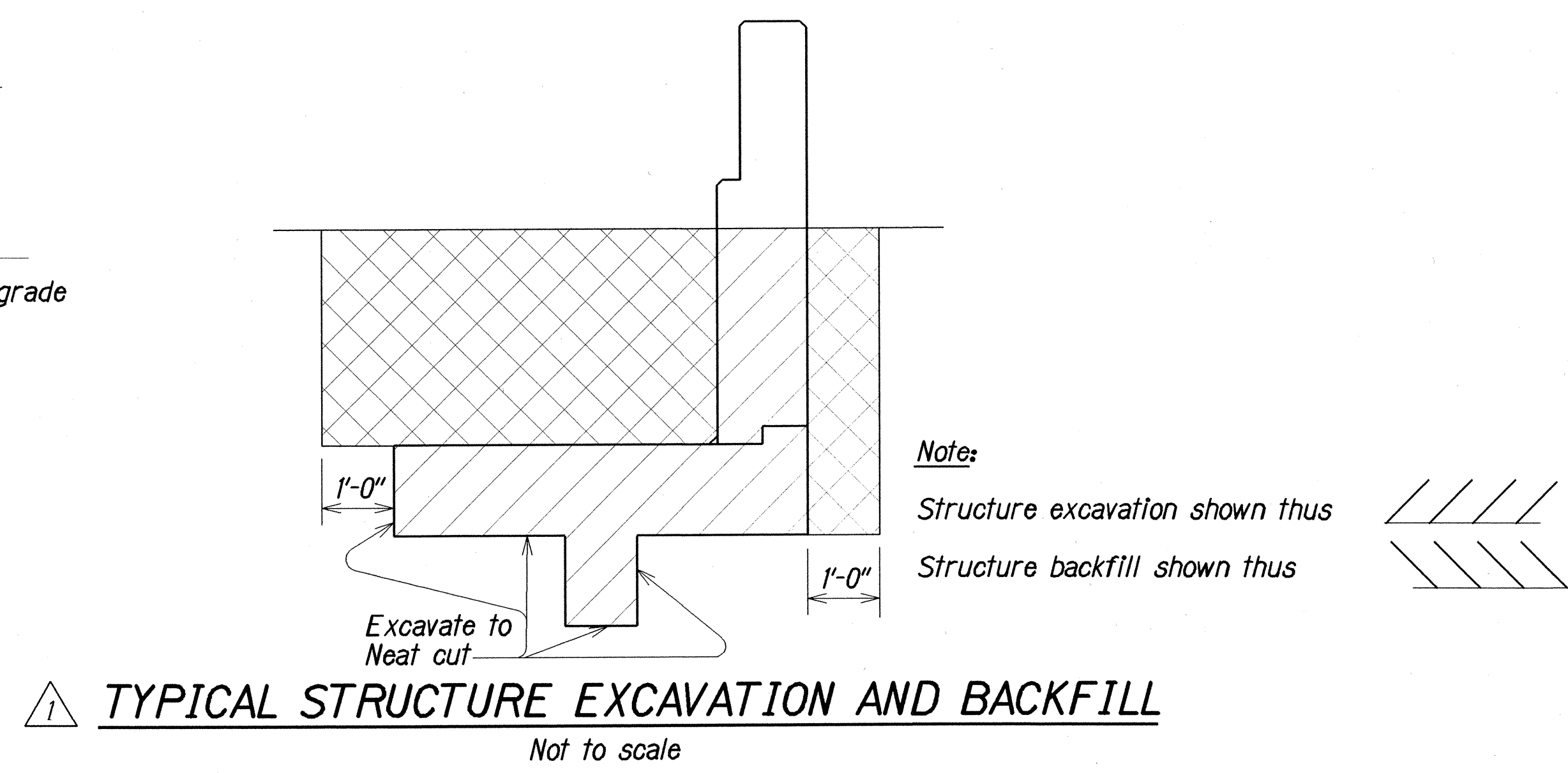
SECTION A-A
Scale: 3/4" = 1'-0"



SECTION B-B
Scale: 3/4" = 1'-0"



PART ELEVATION
Scale: 1/2" = 1'-0"



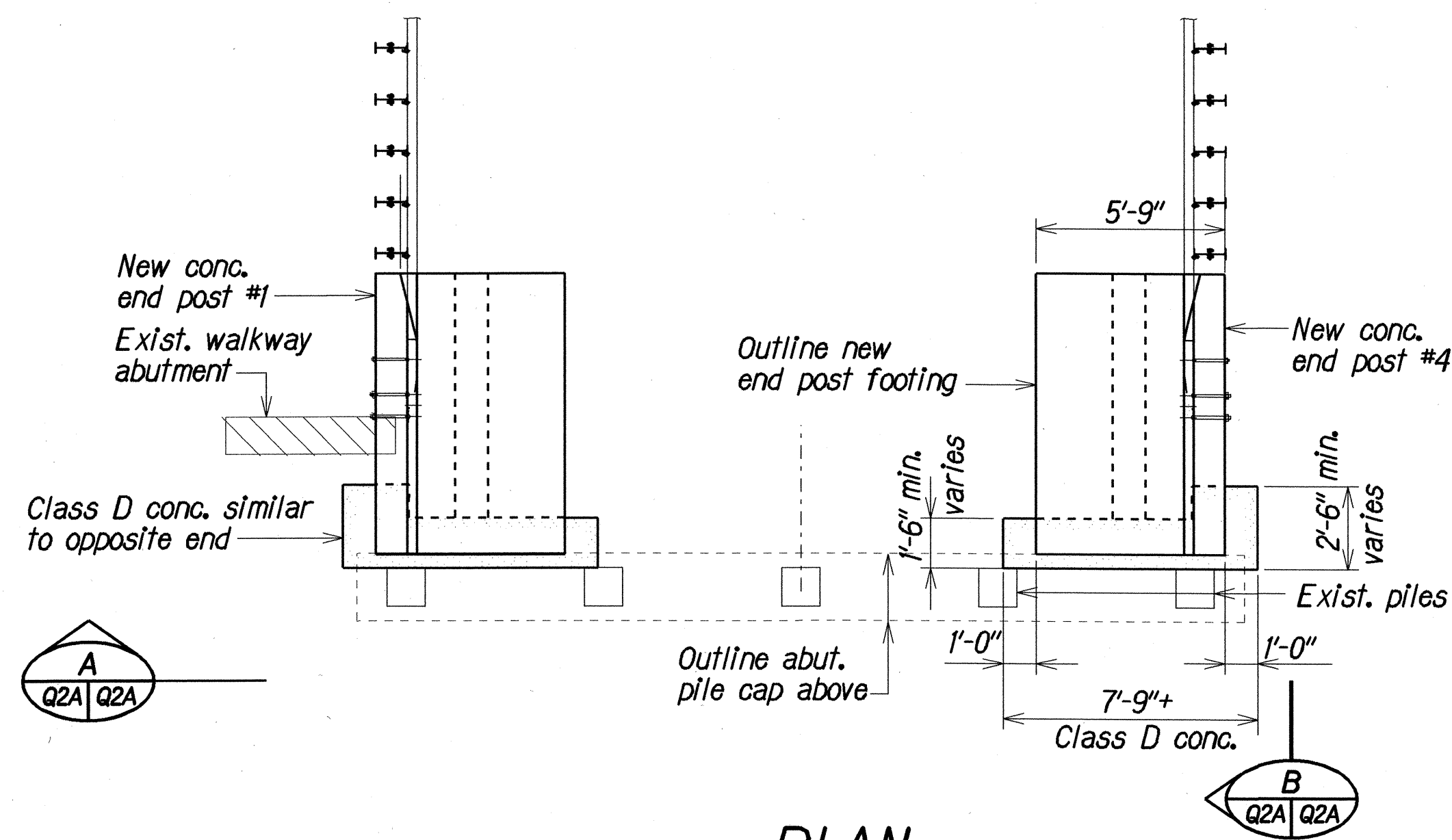
TYPICAL STRUCTURE EXCAVATION AND BACKFILL
Not to scale

**TYPE "A" UPGRADE AT
SOUTH KAHANA BRIDGE [END POST NO. 1 AND NO. 4 (OPPOSITE HAND)]
WAIMANANA BRIDGE [END POST NO. 3 AND NO. 4 (OPPOSITE HAND)]**

DATE	REVISIONS
3/21/97	Revise reinf. at endpost No. 1 and No. 4 - South Kahana Br. only.
2/12/97	Revised and added information to accommodate exist. conc. ped. crossing abut. at End Post No. 1, South Kahana Br. Dimensions, labels & details were moved to make space for additions.

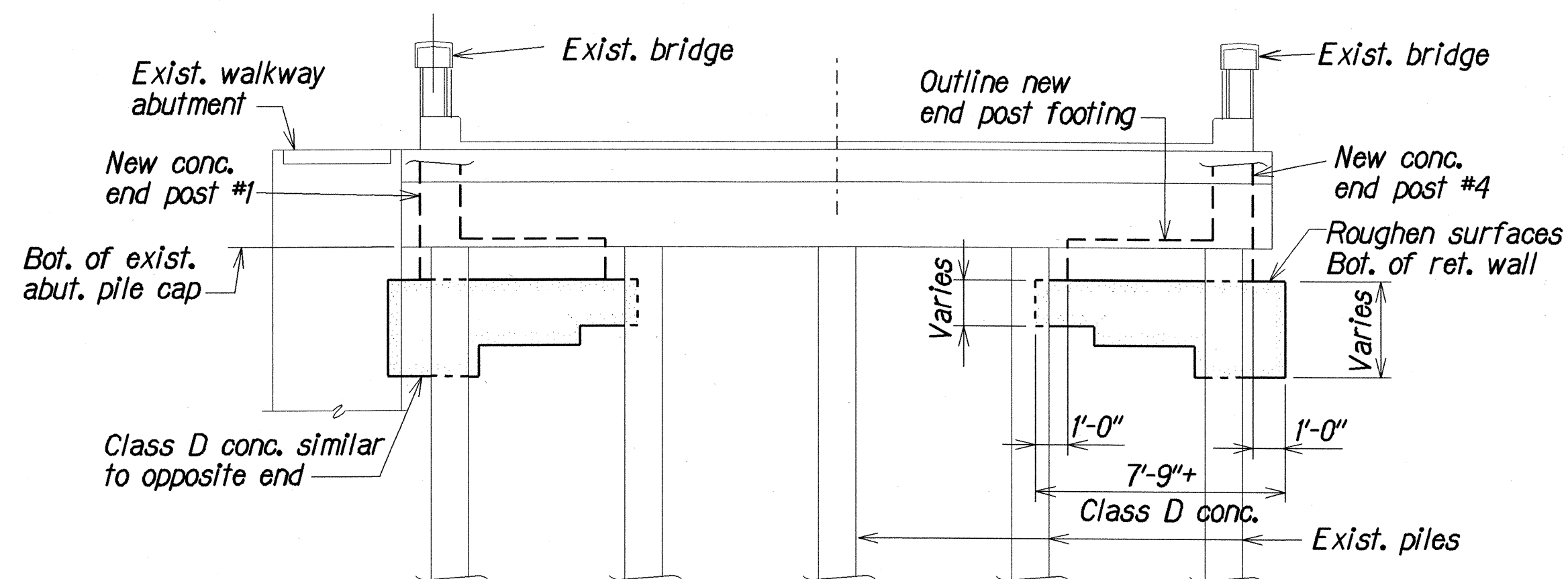
STATE OF HAWAII DEPARTMENT OF TRANSPORTATION HIGHWAYS DIVISION	
SOUTH KAHANA AND WAIMANANA BRIDGES TYPE "A" UPGRADE - END POST CONNECTION KAMEHAMEHA HIGHWAY RESURFACING Crouching Lion to Puhihi Street Project No. 83D-01-96M	
Scale: As Noted	Date: May 1996
SHEET No. Q2 OF 9 SHEETS	

FED. ROAD DIST. NO.	STATE	PROJ. NO.	FISCAL YEAR	SHEET NO.	TOTAL SHEETS
HAWAII	HAW.	83D-01-96M	1996	C.O. 28S-1	50



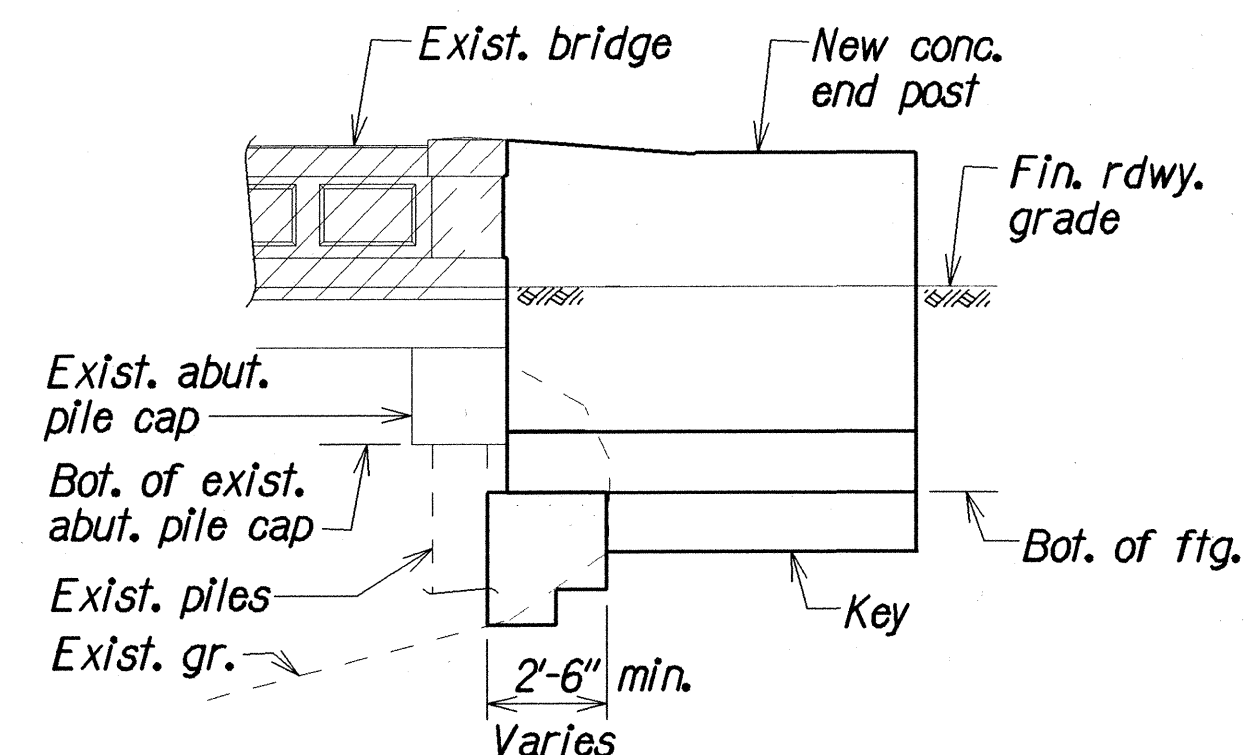
PLAN

Scale: 1/4"=1'-0"



ELEVATION

Scale: 1/4"=1'-0"



PARTIAL ELEVATION

Scale: 1/4"=1'-0"



CLASS "D" CONCRETE FOOTING DETAILS

3/21/97

This supplemental sheet is prepared as a change order to add information regarding the Class "D" concrete footing.

DATE

REVISIONS

STATE OF HAWAII
DEPARTMENT OF TRANSPORTATION
HIGHWAYS DIVISION

SOUTH KAHANA BRIDGE
CLASS "D" CONCRETE FOOTING DETAILS
KAMEHAMEHA HIGHWAY RESURFACING
Crouching Lion to Puhuli Street
Project No. 83D-01-96M

Scale: As Noted

Date: May 1996

SHEET No. Q2A OF 9 SHEETS

C. O. 28 S-1

ORIGINAL	SURVEY PLOTTED BY	DATE
PLAN	LHIE TKM	May 1996
NOTE BOOK	DESIGNED BY	May 1996
QUANTITIES BY	IFU	May 1996
CHECKED BY	IFU	May 1996
	PKO	May 1996

db3/usr2/lhm/nkam/nkam.bq2co28s1.dgn