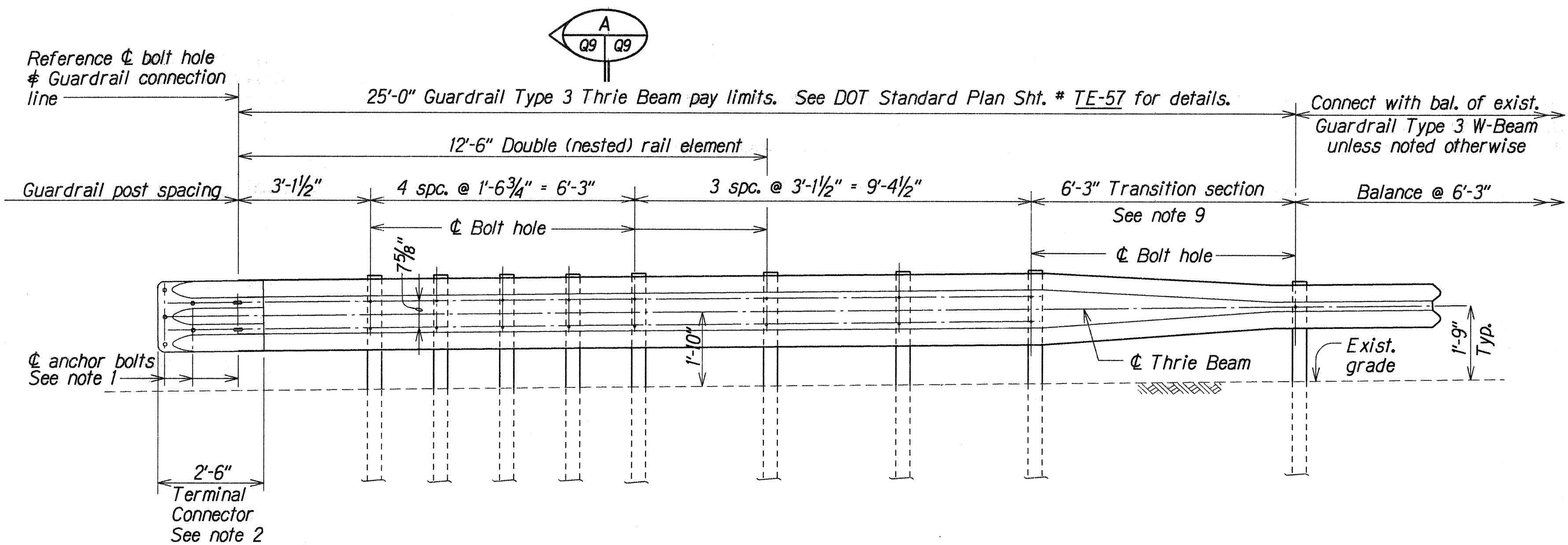
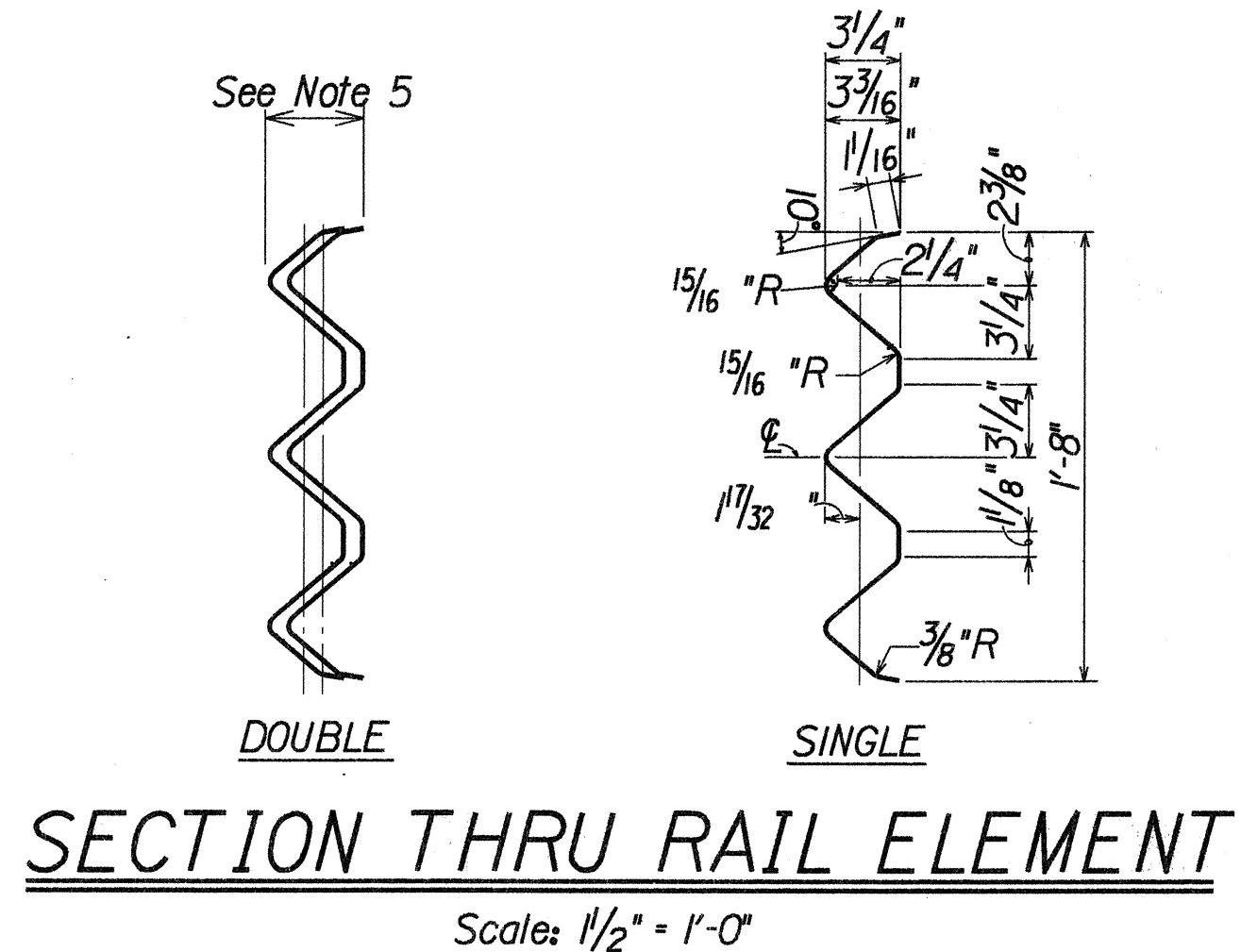
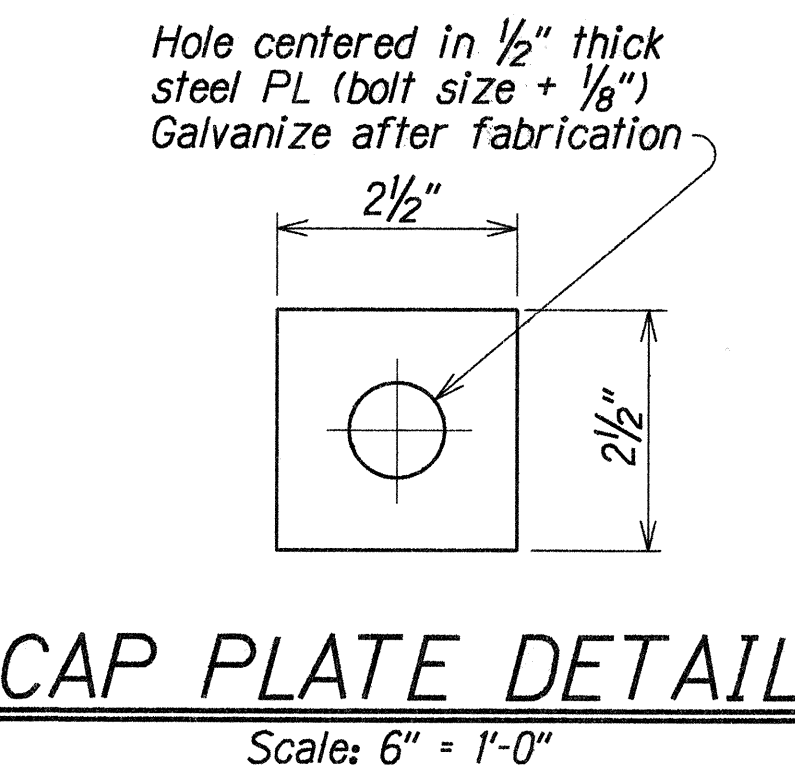
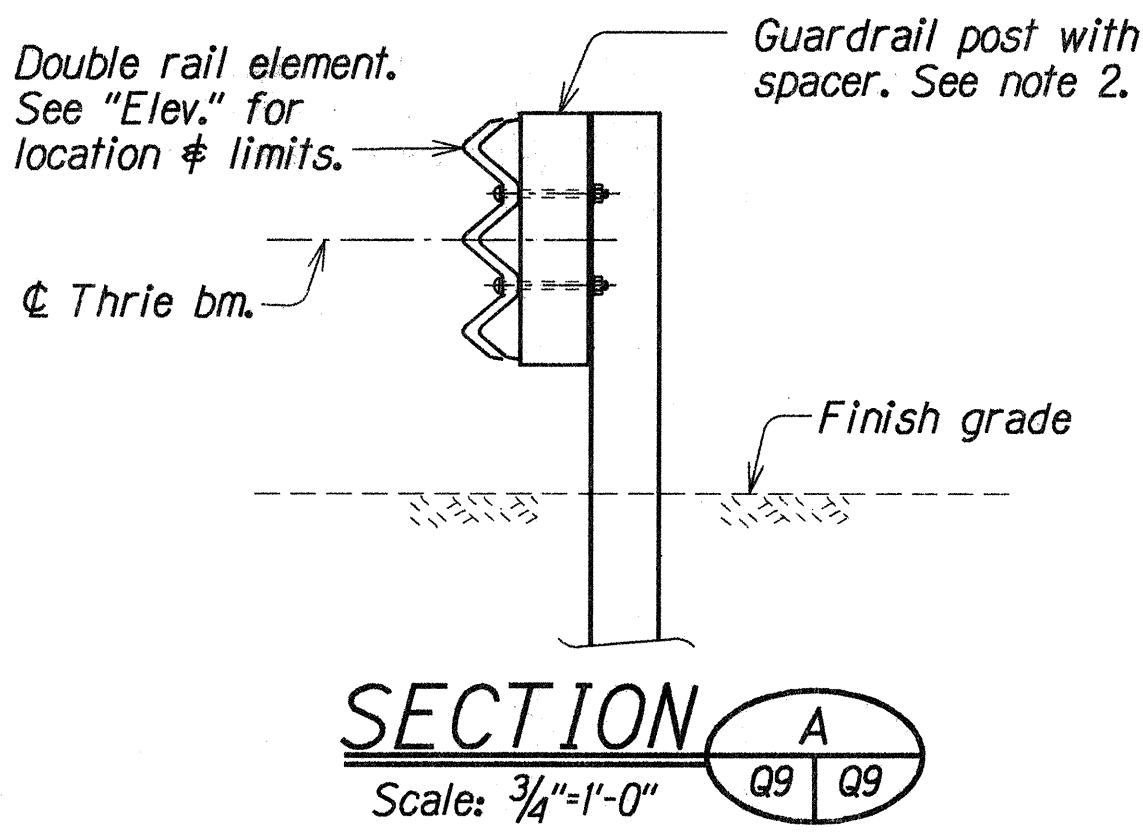


FED. ROAD DIST. NO.	STATE	PROJ. NO.	FISCAL YEAR	SHEET NO.	TOTAL SHEETS
HAWAII	HAW.	83D-01-96M	1996	35	50



TYPICAL TYPE 3 THRIE BEAM METAL GUARDRAIL UPGRADE
 Scale: 1/2" = 1'-0"



- NOTES:**
1. The work necessary to connect guardrail to concrete end post shall include all labor, materials, tools, equipment and incidentals necessary to complete the work and shall be incidental to the metal guardrail and will not be paid for separately.
 2. See "DOT Standard Plan" Sht. #TE-57 for guardrail Type 3 thrie beam details and Sht. #TE-50 & #TE-51 for W beam metal guardrail details. Lap terminal connector and rail element in direction of traffic to prevent snagging.
 3. See "General Notes" on Sht. #Q1 for additional guardrail and drilling information.
 4. Where double (nested) beam occur, 12" "Back-up Plate" not required.
 5. Double (nest 1st panel) thrie beam elements at all end post connections, except on highways with one-way traffic pattern, use single thrie beam elements at end post on trailing end only.
 6. Terminal connector and accessories will be considered incidental to item No. 606.3112 - guardrail, Type 3 thrie beam with steel post.

ORIGINAL PLAN	DATE	DESIGNED BY	CHECKED BY
NOTE BOOK	May 1996	JFU	JFU
QUANTITIES BY	May 1996	JFU	JFU
CHECKED BY	May 1996	JFU	JFU

STATE OF HAWAII

DEPARTMENT OF TRANSPORTATION

HIGHWAYS DIVISION

SOUTH KAHANA, NORTH KAHANA,

SOUTH PUNALUU & WAIMANANA BRIDGES

METAL GUARDRAIL UPGRADE DETAILS

KAMEHAMEHA HIGHWAY RESURFACING

Crouching Lion to Puhuli Street

Project No. 83D-01-96M

Scale: As Noted

Date: May, 1996